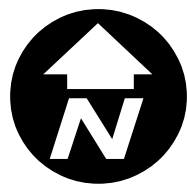


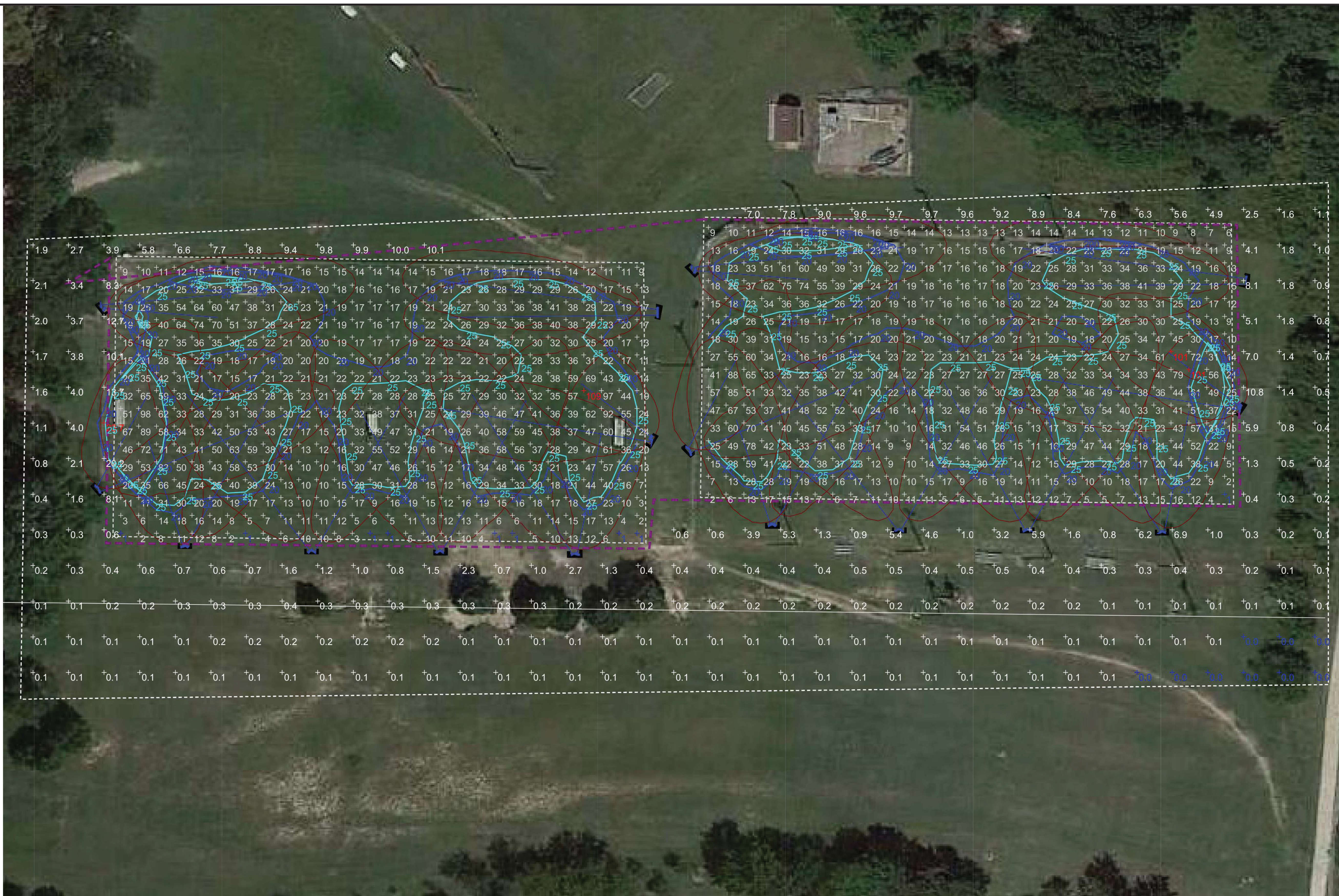
City of Rockwall

Planning & Zoning Department
 385 S. Goliad Street
 Rockwall, Texas 75032
 (P): (972) 771-7745
 (W): www.rockwall.com

The City of Rockwall GIS maps are continually under development and therefore subject to change without notice. While we endeavor to provide timely and accurate information, we make no guarantees. The City of Rockwall makes no warranty, express or implied, including warranties of merchantability and fitness for a particular purpose. Use of the information is the sole responsibility of the user.



PLOT THIS DRAWING USING ACS-STANDARD.CTG



NOTE:
BLINDERS/BLOCKERS REQUIRED ON SOUTH FACING
LIGHT POLES TO LIMIT FC LEVEL AT THE SOUTH
PROPERTY LINE. SUBJECT TO CITY APPROVAL

LUMINAIRE SCHEDULE

CALLOUT	SYMBOL	LAMP	DESCRIPTION	BALLAST	MOUNTING	MODEL	VOLTS	QUANTITY
Pole	○ □	(1) 5000K R670	JEC-XA-LED-503-900W-HIMAS-30D-5K	ELECTRONIC	POLE	JEC ENERGY SAVINGS	120V 1P 2W	32

ELECTRICAL - PHOTOMETRICS PLAN



PROJECT:
BORDEAUX COMPANY
YMCA
1210 N. GOLIAD ST.
ROCKWALL, TX 75087

Montgomery
2018.07.30
00'05- 12:40:08
J. MARTIN MONTGOMERY
REGISTERED PROFESSIONAL
ENGINEER STATE OF TEXAS - NO.
90427
RCS ENTERPRISES, LP F-2071

REVISION HISTORY	
NO.	DESCRIPTION

ISSUE DATE: 6/26/2018

DRAWN BY: RF

SCALE: N.T.S. 24x36

SHEET NUMBER:

E1.1

Rockwall, Texas, Code of Ordinances >> PART III - UNIFIED DEVELOPMENT CODE >> **Article VII - ENVIRONMENTAL PERFORMANCE >> SECTION 3. - OUTDOOR LIGHTING FOR NONRESIDENTIAL PROPERTIES >>**

SECTION 3. - OUTDOOR LIGHTING FOR NONRESIDENTIAL PROPERTIES

[Sec. 3.1. - Definitions.](#)

[Sec. 3.2. - Prohibited lighting.](#)

[Sec. 3.3. - Minimum requirements.](#)

[Sec. 3.4. - Plan required.](#)

[Sec. 3.5. - Nonconforming lighting.](#)

[Sec. 3.6. - Exemptions.](#)

Sec. 3.1. - Definitions.

Candela means a measurement quantified in unit(s) of luminous intensity in any given direction. It is also commonly referred to as candlepower(s).

Floodlight means an artificial illumination in broad beam, above 15 watts with a light source that extends more than two inches below the horizontal plane of the lamina.

Footcandle or *FC* means the amount of illumination provided by one lumen uniformly distributed on one square foot of surface.

(Ord. No. 10-14, § 50, 7-6-2010)

Full cut-off means a light source that does not extend below the horizontal plan of the luminaire.

Light source means the device which produces visible energy, such as a bulb.

Lumen means the quantity of luminous flux intercepted by a surface of one square foot, all points of which are one foot from a uniform source of one candela. A one-candela source provides 12.57 lumens.

Luminaire means a complete lighting unit including a light source and all necessary mechanical, electrical, reflective, and decorative parts.

Partial cut-off means a light source that extends no more than one inch below the horizontal plan of luminaire.

(Ord. No. 10-14, § 50, 7-6-2010)

Standard means the light pole and base.

Temporary holiday lighting means the type of lighting typically used during the holiday periods.

Sec. 3.2. - Prohibited lighting.

It shall be unlawful to display or operate the following:

- A. An unshielded light source, including bare bulbs, above 15 watts, except for temporary holiday lighting.
- B. The operation of search lighting is prohibited except it shall be permitted for a period not to exceed 14 days from grand openings and promotional events with permission of the building official.

Sec. 3.3. - Minimum requirements.

- A. *Glare.* In order to preserve the night sky and to reduce glare on roadways, pedestrian areas and adjacent development, light sources (e.g. light bulbs) shall be oriented down and toward the center of the site or shielded so as to not be visible from the property line. This applies to refractory lenses which extend beyond the lighting fixture and are designed to redirect the lighting source horizontally. This does not apply to neon or internally lit signs, or to decorative lighting with 15 watts or less per bulb.
- B. *Light at residential property line.* The allowable maximum light intensity measured at the property line of a residentially zoned lot shall be 0.2 of one footcandle.
- C. *Light at nonresidential property line.* The allowable maximum light intensity measured at the property line of any nonresidentially zoned lot shall be 0.2 of one footcandle. For planned shopping centers or other commercial developments that contain more than one lot, the planning and zoning commission may consider lighting plans that are intended to increase lighting efficiency and reduce the number of overall light fixtures, but result in light spillover across common lot lines within the same development. However, in no case shall light levels exceed 0.2 FC at the property lines adjacent to the street and/or along the perimeter of the development.

(Ord. No. 10-14, § 51, 7-6-2010)

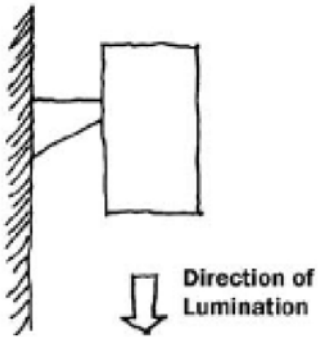
- D. *Height.* No light pole, base or combination thereof shall exceed 30 feet, unless further restricted within an Overlay District as specified in article V of this [Unified Development] Code.

(Ord. No. 06-14, 4-17-2006)

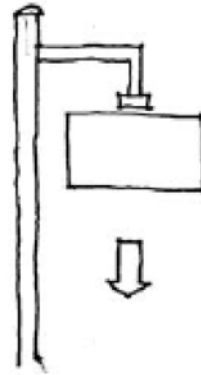
- E. *Building and pole mounted lighting.* All building and pole mounted luminaries exceeding 15 watts shall be directed down with either a partial cut-off or full cut-off source. See lighting exhibits A and B.

Lighting Exhibits

Exhibit A

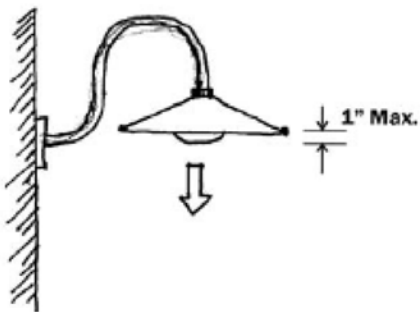


EXAMPLE OF FULL CUT-OFF BUILDING MOUNTED FIXTURE

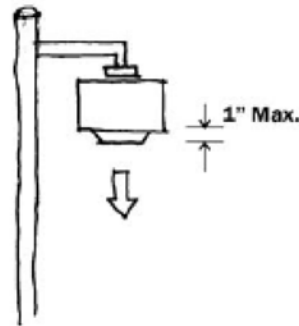


EXAMPLE OF FULL CUT-OFF LIGHT STANDARDS

Exhibit B



EXAMPLE OF PARTIAL CUT-OFF BUILDING MOUNTED FIXTURE



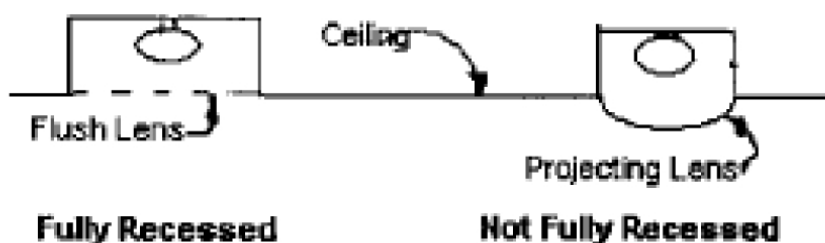
EXAMPLE OF PARTIAL CUT-OFF LIGHT STANDARD

(Ord. No. 10-14, § 51, 7-6-2010)

- F. *Under-canopy lighting.* All under-canopy lighting, including, but not limited to, those fixtures utilized at fueling stations, drive-through lanes, and covered parking structures, shall be fully recessed into the canopy (See lighting exhibit C).

(Ord. No. 10-14, § 51, 7-6-2010)

Lighting Exhibit C



EXAMPLES OF UNDER-CANOPY LIGHTING

- G. *Illumination.* The maximum outdoor maintained, computed and measured illumination level within any nonresidential development shall not exceed 20 FC outdoors at any point on the site, with the following exceptions:
1. Under-canopy lighting (e.g., fuel stations, drive-through lanes and covered parking structures) shall not exceed 35 FC. The remainder of the property shall comply with the 20-FC maximum.
 2. Lighting for motor vehicle dealerships shall not exceed 30 FC within the front yard(s) of the development. The remainder of the property shall comply with the 20-FC maximum.

(Ord. No. 10-14, § 51, 7-6-2010)

- H. *Exemptions.* Historic or antique-style pedestrian light fixtures approved by the planning and zoning commission are excluded from these standards.

(Ord. No. 10-14, § 51, 7-6-2010)

Sec. 3.4. - Plan required.

A photometric plan describing compliance with the provisions of this section shall be submitted to the director of planning prior to the issuance of any building permit or certificate of occupancy that proposes additional lighting. This plan shall be prepared by an appropriate lighting designer such as a lighting engineer, architect or other qualified lighting designer. Upon installation of the lighting, the designer shall provide a letter certifying that the lighting is installed in accordance with the approved design and this section. The director of planning shall have the authority to interpret and determine compliance with this section. The planning and zoning commission may grant exemptions to the provisions of this article if compliance will result in substantial financial hardship or inequity, so long as said exemption is without harm to the public. Decisions of the planning and zoning commission may be appealed to the city council.

Sec. 3.5. - Nonconforming lighting.

Luminaries installed prior to the adoption of this [Unified Development Code] shall be exempt from the requirements herein.

Sec. 3.6. - Exemptions.

Lighting installed by or for a governmental agency for the public benefit that is used for activities for the public benefit such as right of way, ball fields, airports and parks. However, parking lot lighting for these activities shall be meet the requirements of the section.