



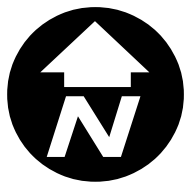
SP2018-012 - THE ALDERS AT ROCKWALL
SITE PLAN - LOCATION MAP =

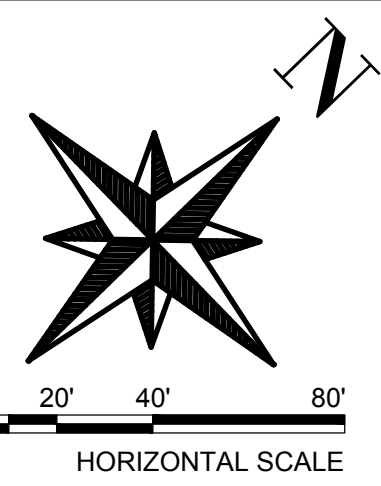


City of Rockwall

Planning & Zoning Department
385 S. Goliad Street
Rockwall, Texas 75032
(P): (972) 771-7745
(W): www.rockwall.com

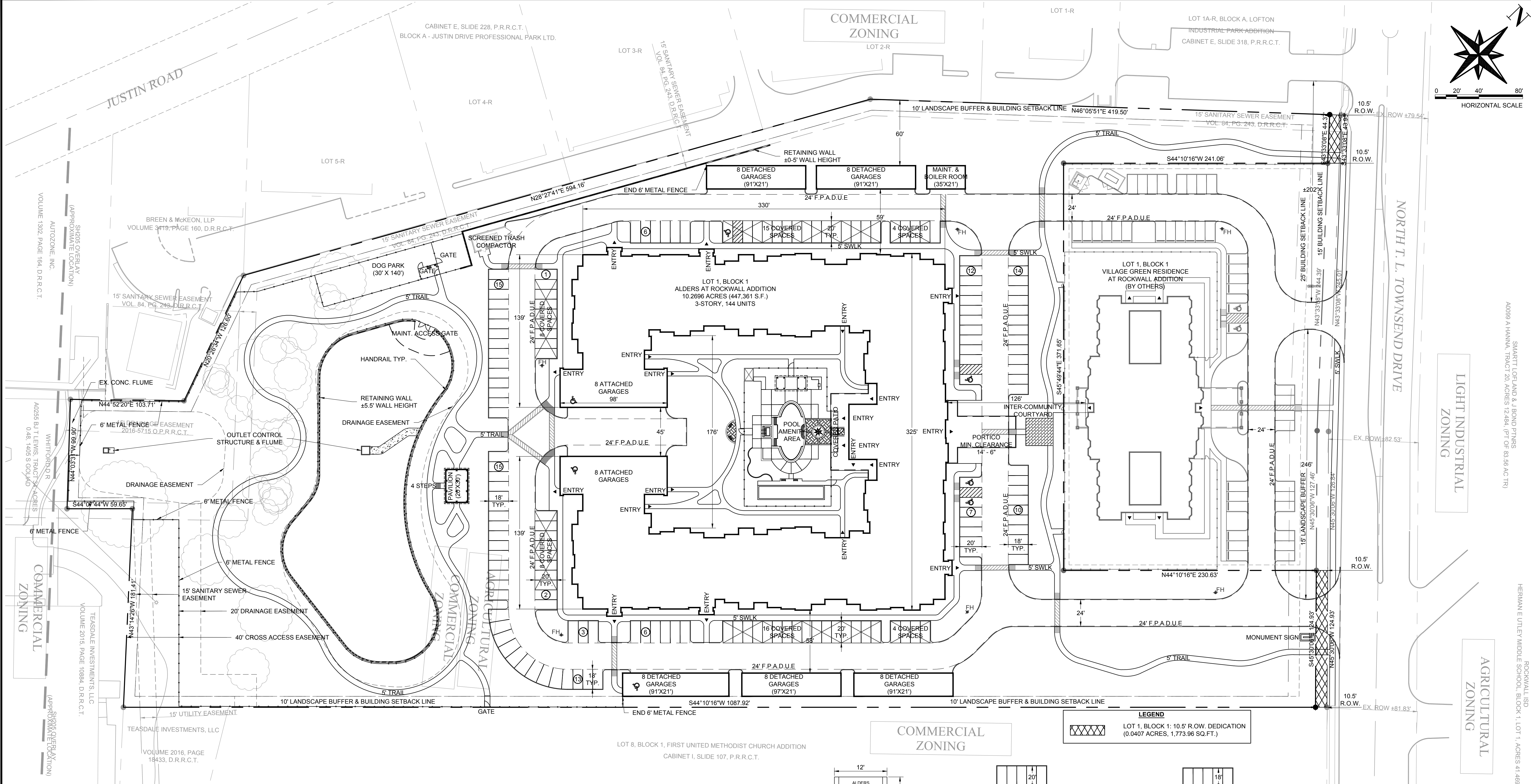
The City of Rockwall GIS maps are continually under development and therefore subject to change without notice. While we endeavor to provide timely and accurate information, we make no guarantees. The City of Rockwall makes no warranty, express or implied, including warranties of merchantability and fitness for a particular purpose. Use of the information is the sole responsibility of the user.





PLOTTED: 5/10/2018 9:31:11 AM

P:\P65211\Cadd\modis\Civil\IC-SP0001.dwg 5/10/2018 9:30:11 AM Miller, Nathan



- GENERAL NOTES:**
1. ALL FIRE LANE INNER TURN RADI ARE 30' TO THE FACE OF CURB.
 2. F.P.A.D.U.E STANDS FOR FIRE LANE, PUBLIC ACCESS, DRAINAGE & UTILITY EASEMENT.
 3. THE PROPERTY OWNER WILL BE RESPONSIBLE FOR MAINTAINING, REPAIRING, AND REPLACING ALL OF THE DETENTION AND DRAINAGE SYSTEMS.
 4. DUMPSTERS/TRASH COMPACTORS SHALL DRAIN TO AN OIL/WATER SEPARATOR PRIOR TO DISCHARGE INTO STORM DRAIN SYSTEM.
 5. ALL PROPOSED UTILITY EASEMENTS ARE TO BE 20' WIDE.
 6. ARCHITECTURAL STANDARDS TO MEET CITY OF ROCKWALL STANDARDS.
 7. ALL FIRE LANES TO BE 6" THICK CLASS 'C' REINFORCED CONCRETE 6.0 SACK MINIMUM CEMENT, 3,600 PSI MINIMUM 28-DAY CONCRETE STRENGTH WITH #3 BARS AT 24" ON CENTER.
 8. PARKING PAVEMENT TO BE MINIMUM 5" 3000 PSI CONCRETE.

BURGESS & NIPLE
 10701 CORPORATE DR., SUITE 118, STAFFORD, TX 77477
 PHONE: (281) 980-7705
 TBP FIRM REGISTRATION NO. F-10834
 CONTACT: JOSEPH T. REUE

Rockwall SIL

PROJECT TABULATION

| Lot | Area (Acres) | Area (Sq. Ft.) | Units | Notes |
|----------------|--------------|----------------|-------|--------------------|
| Lot 1, Block 1 | 10.27 | 447,361 | 144 | 3-Story, 144 Units |

ALDERS AT ROCKWALL BUILDING DATA

| Item | Quantity | Unit | Notes |
|--------------------|----------|---------|-----------|
| 8 Detached Garages | 24 | Garages | (91'x21') |
| 8 Attached Garages | 24 | Garages | 98' |
| 15 Covered Spaces | 15 | Spaces | 20' TYP. |
| 4 Covered Spaces | 4 | Spaces | 20' TYP. |
| 16 Covered Spaces | 16 | Spaces | 20' TYP. |
| 4 Covered Spaces | 4 | Spaces | 20' TYP. |

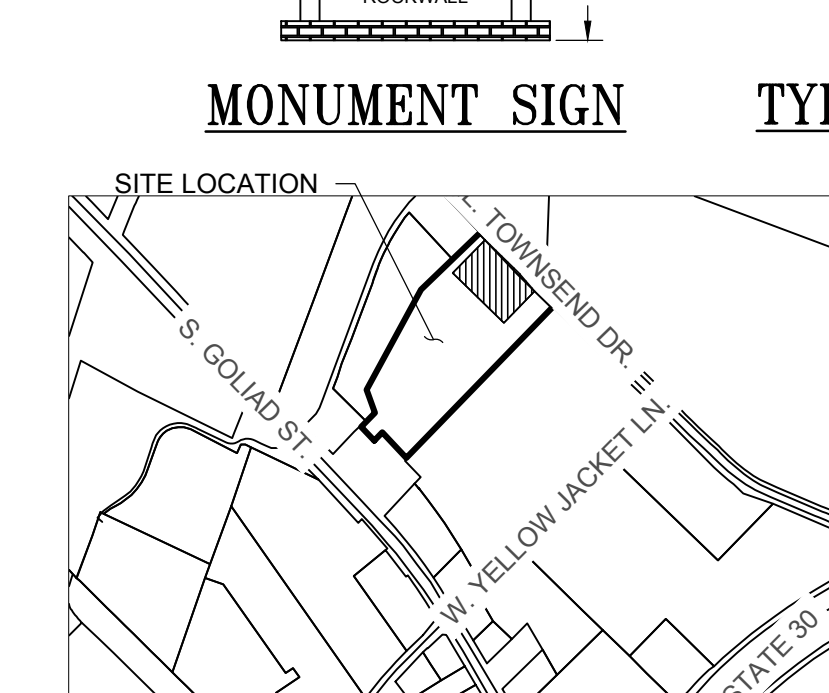
LOT DATA

LOT 1, BLOCK 1 (ALDERS AT ROCKWALL ADDITION)

| Item | Value | Unit |
|---------------------------|---------|---------|
| Lot Area | 10.27 | Acres |
| Lot Area | 447,361 | Sq. Ft. |
| Lot Coverage | 1.99 | 19.3% |
| Building Coverage | 3.29 | 32.2% |
| Total Open Space Provided | 2.27 | 22.2% |

SITE DATA

| Item | Value | Unit |
|---------------------------|-------|-------|
| Lot Coverage | 1.99 | 19.3% |
| Building Coverage | 3.29 | 32.2% |
| Total Open Space Provided | 2.27 | 22.2% |



VICINITY MAP
 NOT TO SCALE



TYPICAL BUILDING ADJACENT PARKING SPACE



TYPICAL PARKING SPACE

ARCHITECT:
 MILLER ARCHITECTURE, INC.
 808 18TH STREET, PLANO, TEXAS 75074
 CONTACT: FRANK POLLACK
 PHONE: (972) 509-0088

SURVEYOR:
 MILLER SURVEYING, INC.
 430 MID CITIES BLVD., HURST, TEXAS 76054
 CONTACT: JASON RWLINGS
 PHONE: (817) 577-1052

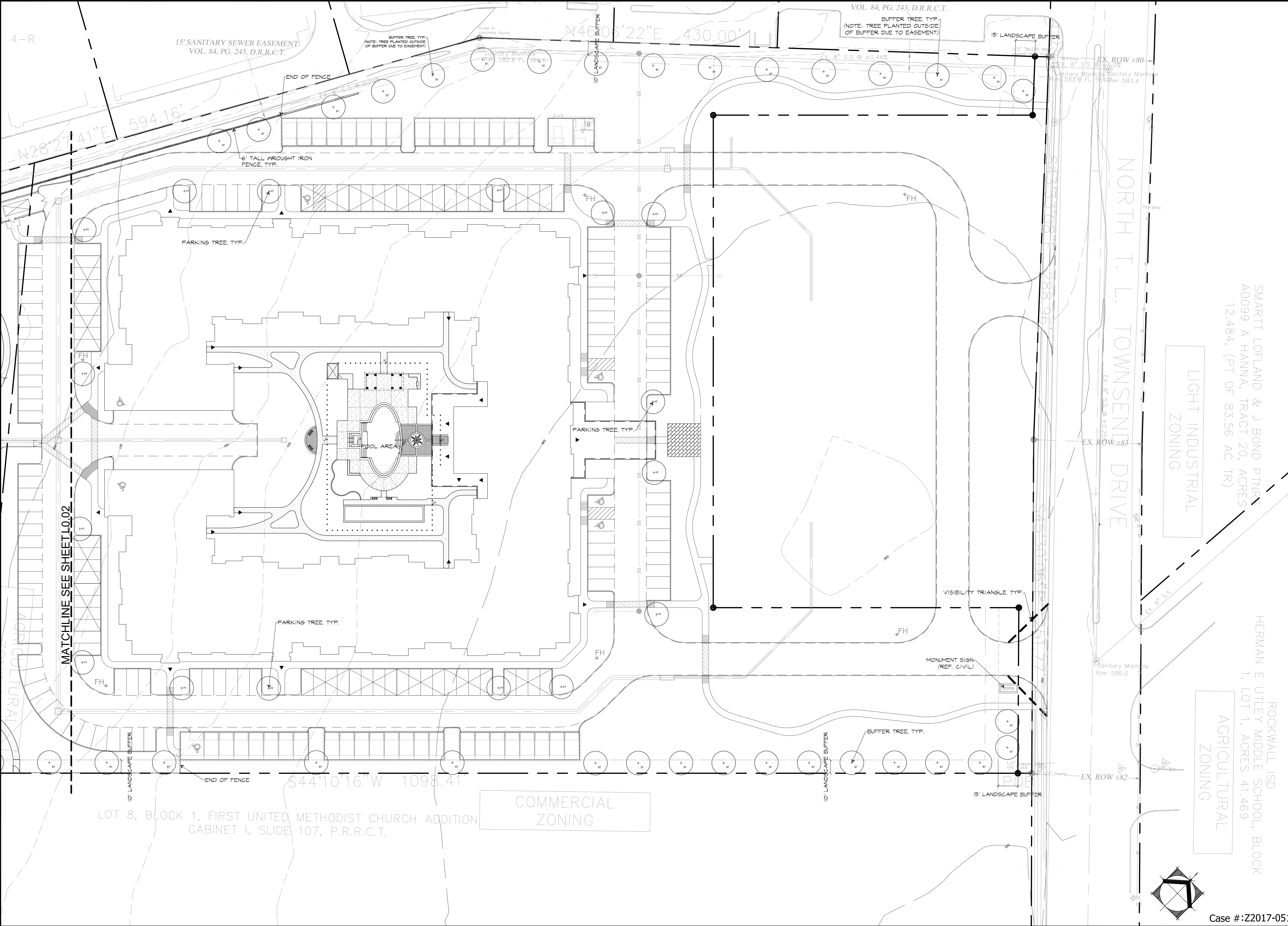
OWNER:
 CAMERON & CAMERON
 6808 DENALI DRIVE, MCKINNEY, TEXAS 75070
 CONTACT: ROB CAMERON
 PHONE: (214) 789-9143

APPLICANT:
 ALDERS ROCKWALL SIL PROPERTY, LLC
 1625 CLARKE SPRINGS DRIVE, ALLEN, TEXAS 75002
 CONTACT: BART TINSLEY
 PHONE: (469) 446-1276

SITE PLAN
 FOR
"ALDERS AT ROCKWALL"
 LOT 1, BLOCK 1
 ALDERS AT ROCKWALL ADDITION
 A 10.27 ACRE TRACT IN
 ROCKWALL, TEXAS
 ROCKWALL COUNTY, TEXAS

MAY 11, 2018
 IT IS NOT TO BE USED FOR CONSTRUCTION PURPOSES.

CASE NUMBER: (Z2017-051)



4-R

15' SANITARY SEWER EASEMENT
VOL. 84, PG. 243, D.R.R.C.T.

VOL. 84, PG. 243, D.R.R.C.T.

BUFFER TREE, TYP.
(NOTE: TREE PLANTED OUTSIDE
OF BUFFER DUE TO EASEMENT)

15' LANDSCAPE BUFFER

EX. ROW ±80
EX. 8" S.S. @ ±0.0%

NORTH T. L. TOWNSEND DRIVE

LIGHT INDUSTRIAL
ZONING

SMARTT LOFLAND & J BOND PINKS
A0099 A HANNA, TRACT 20, ACRES
12.484, (PT OF 83.56 AC TR)

AGRICULTURAL
ZONING

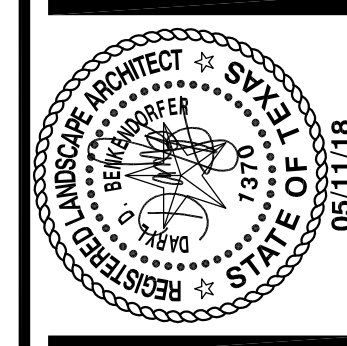
ROCKWALL ISD
HERMAN E UTLEY MIDDLE SCHOOL, BLOCK
1, LOT 1, ACRES 41.469

COMMERCIAL
ZONING

LOT 8, BLOCK 1, FIRST UNITED METHODIST CHURCH ADDITION
CABINET I, SLIDE 107, P.R.R.C.T.

MATCHLINE SEE SHEET L0.02

| REVISIONS | COMMENTS |
|-----------|----------|
| | |
| | |
| | |
| | |
| | |
| | |
| | |
| | |
| | |

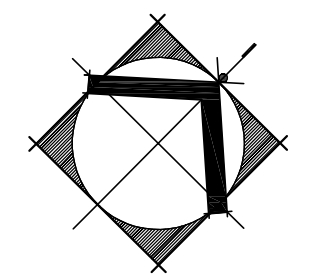


ALDERS AT ROCKWALL
ROCKWALL, TEXAS
LANDSCAPE / TREESCAPE PLAN

SCALE:
0 30 45

DATE:
05/11/18

B+A
BENKENDORFER+ASSOCIATES
LANDSCAPE ARCHITECTURE/SITE PLANNING
3701 Bee Cave Road
Heritage Square, Ste P
Austin, TX 78746
P 512 366 3399
F 512 369 3465



Case #: Z2017-051

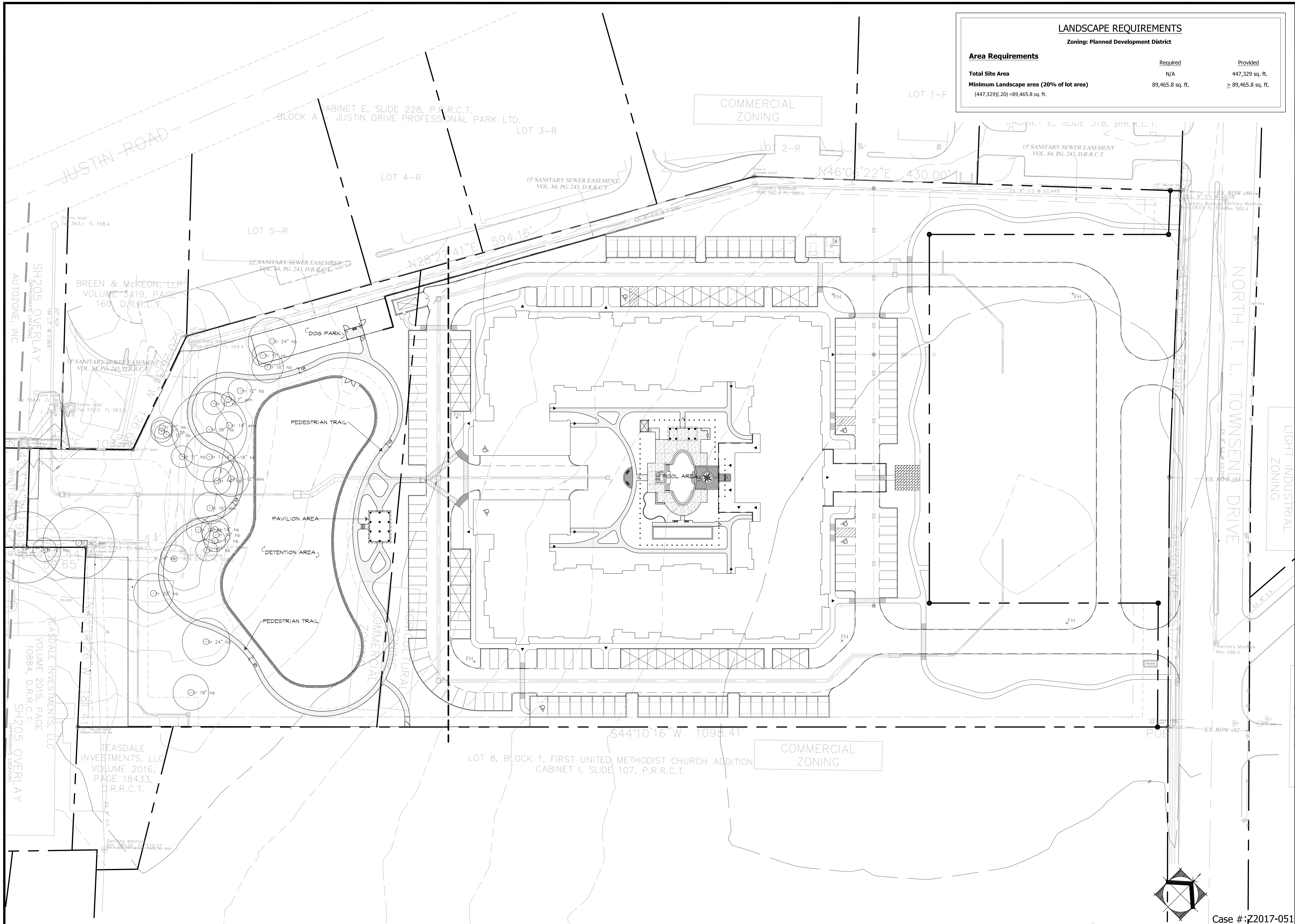
L:\045\05\City Submittal\L0.01.dwg modified by luts on May 07, 2018 - 3:59pm

LANDSCAPE REQUIREMENTS

Zoning: Planned Development District

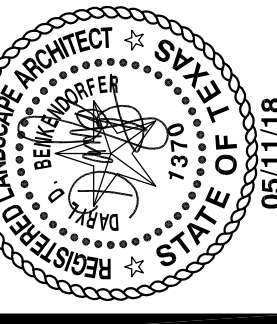
Area Requirements

| | Required | Provided |
|--|------------------|--------------------|
| Total Site Area | N/A | 447,329 sq. ft. |
| Minimum Landscape area (20% of lot area) | 89,465.8 sq. ft. | ≥ 89,465.8 sq. ft. |
| (447,329)(.20) = 89,465.8 sq. ft. | | |



REVISIONS

| NO. | DATE | COMMENTS |
|-----|------|----------|
| | | |
| | | |
| | | |
| | | |



ALDERS AT ROCKWALL
 ROCKWALL, TEXAS
 OPEN SPACE / AMENITY PLAN

SCALE:
 0 30 45
 DATE:
 05/11/18



L0.03
 PROJECT # 045-05

Case #: Z2017-051

L:\045\05\City Submittal\L0.03.dwg modified by luls on May 07, 2018 - 4:01pm



Project No. 160302

Issue Drawing Log

16 Feb 2018 Issue for Permit

These documents are the renderings of a professional service, the essence of which is the providing of advice, judgment, opinion or similar professional skill. Copyright Architettura Inc. 01 JUNE 2018. All material contained within constitutes an original work by the architect. The architect owns all copyrights herein.

SHEET TITLE:
- PHOTOMETRICS

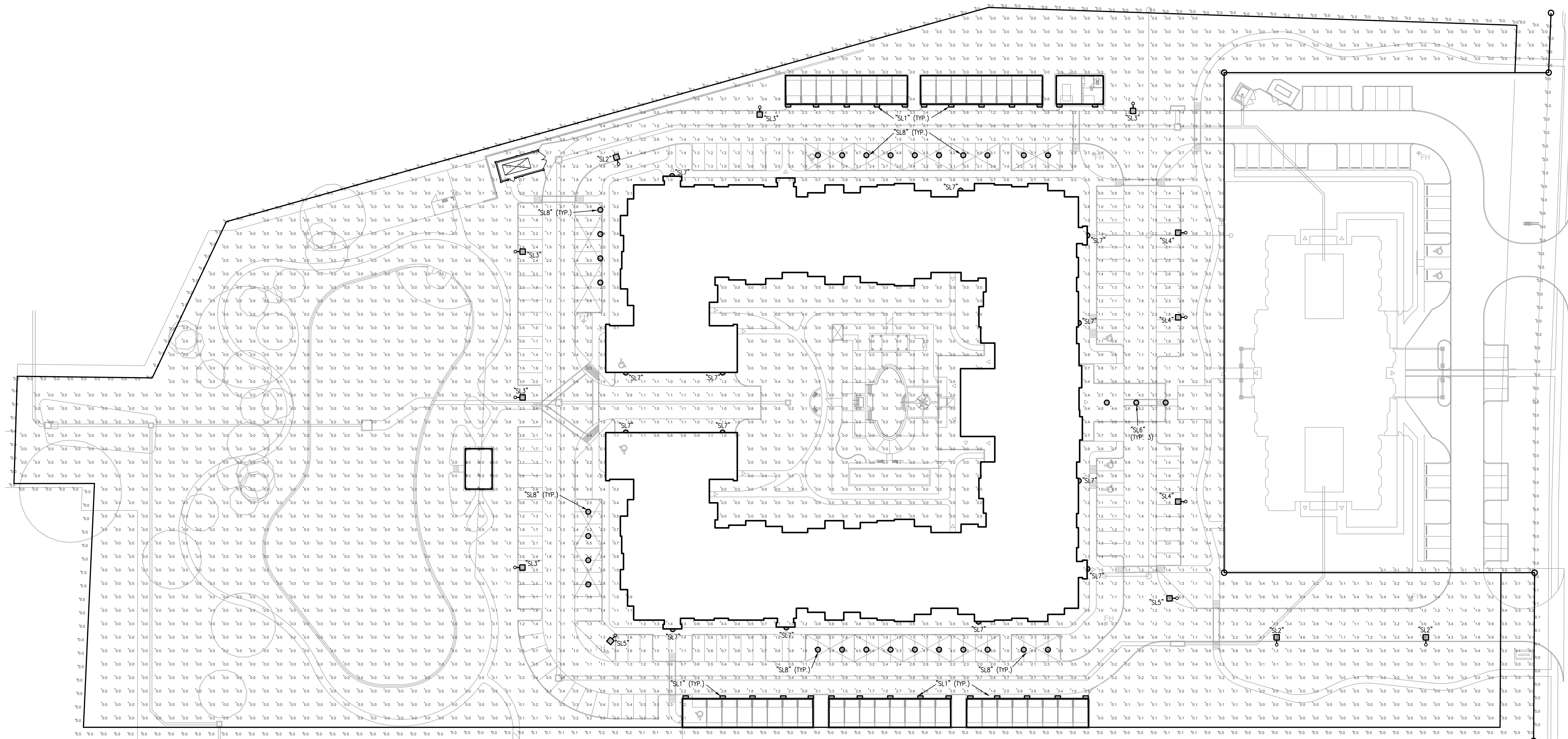
Drawing No.

E0.01

TEXAS BOARD OF
PROFESSIONAL
ENGINEERS FIRM NO.
F-9639

LS&A
Latimer Sommers
& Associates, P.A.
CONSULTING ENGINEERS
3639 SW Summerfield Drive, Suite A
Topeka, Kansas 66614-3974
Telephone: (785) 233-3232
FAX: (785) 233-0427
Email: lsapa@lsapa.com

LSA PROJECT NO. 1804003



1 PHOTOMETRIC SITE PLAN
1"=40'-0"


| MARK | MANUFACTURE | MODEL NUMBER | MOUNTING | | | FINISH | LAMPS | | | REMARKS | |
|------|---------------|---------------------------------|----------|---------|------|--------|-------|--------|---------------|---------|------|
| | | | RECESS | SURFACE | WALL | | LED | FLOOR. | MID | | CODE |
| SL1 | RAB | ENTRA12Y | | | X | BLACK | X | | 876LUM/14W | 1 | 4 |
| SL2 | LUMARK | PRV-A25-D-UNV-T2-B2-7030-HSS | | POLE | X | BLACK | X | | 10,204LUM/87W | 1 | 1, 2 |
| SL3 | LUMARK | PRV-A25-D-UNV-T3-B2-7030-HSS | | POLE | X | BLACK | X | | 10,292LUM/87W | 1 | 1, 2 |
| SL4 | LUMARK | PRV-A25-D-UNV-T4-B2-7030-HSS | | POLE | X | BLACK | X | | 10,261LUM/87W | 1 | 1, 2 |
| SL5 | LUMARK | PRV-A25-D-UNV-T5-B2-7030-HSS | | POLE | | BLACK | X | | 10,627LUM/87W | 1 | 1, 2 |
| SL6 | WILLIAMS | L45-L20C-830-CS-W-AC/CAL-WET/CC | X | | | BLACK | X | | 1,500LUM/26W | 1 | 5 |
| SL7 | MCGRAW EDISON | ISW-E01-LED-E1-BL3-7030 | | | X | BLACK | X | | 2,702LUM/25W | 1 | 3 |
| SL8 | RAB | CLED26Y | | X | | BLACK | X | | 2,285LUM/29W | 1 | 6 |

REMARKS:

- 1 MOUNT ON 20' RSS POLE, WITH HANDHOLE AND BASE COVER.
- 2 PROVIDE WITH SCREW-IN BASE FOR 90 MPH WIND RATING, 1.3 GUST FACTOR.
- 3 MOUNT AT 16FT AFG.
- 4 MOUNT AT 7FT AFG.
- 5 MOUNT IN CANOPY.
- 6 MOUNT UNDER CARPORT.

| Description | STATISTICS | | | |
|-------------|------------|--------|--------|-----------------|
| | Avg | Max | Min | Max/Min Avg/Min |
| PROPERTY | 0.0 fc | 0.2 fc | 0.0 fc | N/A N/A |
| PARKING | 1.7 fc | 7.1 fc | 0.2 fc | 35.5:1 8.5:1 |

ENTRA12Y



Affordable, high-performance, low-maintenance LED downlight. Suitable for mounting heights up to 10', and replaces 70W high pressure sodium. 100,000-hour LED lifespan. 5-Year warranty.

Color: Bronze Weight: 3.0 lbs

| | | |
|--------------|-------|-------|
| Project: | Type: | "SL1" |
| Prepared By: | Date: | |

| | |
|------------------------|------------------------|
| Driver Info | LED Info |
| Type: Constant Current | Watts: 12W |
| 120V: 0.3A | Color Temp: 3000K |
| 208V: 0.3A | Color Accuracy: 84 CRI |
| 240V: 0.3A | L70 Lifespan: 100000 |
| 277V: 0.3A | Lumens: 876 |
| Input Watts: 14W | Efficiency: 82 LP/W |
| Efficiency: 85% | |

Technical Specifications

Listings: Suitable for wet locations as downlight. Suitable for mounting within 1.2m (4ft) of the ground.

ADA Compliant: IESNA LM-79 & LM-80 Testing: RAB LED luminaires have been tested by an independent laboratory in accordance with IESNA LM-79 and LM-80, and have received the Department of Energy "Lighting Facts" label.

Construction: IP Rating: Ingress Protection rating of IP66 for dust and water.

Cold Weather Starting: Minimum starting temperature is -40°C (-40°F).

Maximum Ambient Temperature: Suitable for use in 40°C (104°F) ambient temperatures based on aluminum.

Lens/Housing Cover: 300K. Vandal resistant polycarbonate molded housing cover and lens.

Mounting: Heavy die cast aluminum with 1/2" back knock-out and mounting template for mounting to 4" box.

Recommended Mounting Height: Up to 10 ft.

Reflectors (2): White aluminum reflector topped with vacuum metalized polycarbonate LED reflector.

Gaskets: High-temperature silicone.

LED Characteristics: Formulated for high-durability and long lasting color.

Green Technology: Mercury and UV free. RoHS compliant components. UV free. Polymer powder coat finish formulated without the use of VOC or toxic heavy metals.

LED: 12W multi-chip, long life LED.

Lifespan: 100,000-hour LED lifespan based on IES LM-80 results and TM-21 calculations.

Correlated Color Temp. (Nominal CCT): 3000K.

Color Stability: LED color temperature is warranted to shift no more than 200K in CCT over a 5 year period.

Color Consistency: 3-step MacKam Ellipse binning to achieve consistent future-to-future color.

Electrical: Constant Current, Class 2, 100-277V, 50/60Hz, 4V Surge Protection, 300mA, 100-240VAC, 0.3 - 0.15 A, 277VAC, 0.15A, Power Factor: 98.6%.

THD: 10.5 at 120V.

Other: Patents: The design of the ENTRAM™ is protected by patents pending in US, Canada, China, Taiwan and Mexico.

Warranty: RAB warrants that our LED products will be free from defects in materials and workmanship for a period of five (5) years from the date of delivery to the end user, including coverage of light output, color stability, driver performance and future finish.

Equivalency: Replaces 70W HPS.

Buy American Act Compliance: RAB values USA manufacturing! Upon request, RAB may be able to manufacture this product to be compliant with the Buy American Act (BAA). Please contact customer service to request a quote for the product to be made BAA compliant.

Need help? Tech help line: (888) RAB-1000 Email: sales@rabweb.com Website: www.rabweb.com
 Copyright © 2018 RAB Lighting Inc. All Rights Reserved. Note: Specifications are subject to change at any time without notice.

Lumark

DESCRIPTION: The Prevall LED area, site luminaire combines optical performance, energy efficiency and long term reliability in an advanced, patent pending modern design. Utilizing the latest LED technology, the Prevall luminaire delivers unparalleled uniformity resulting in greater pole spacing. A versatile mount standard arm facilitates ease of installation for both retrofit and new installations. With energy savings greater than 82%, the Prevall fixture replaces 150-450W metal halide fixtures in general area lighting applications such as parking lots, walkways, roadways and building areas.

SPECIFICATION FEATURES

Construction: Construction is comprised of a heavy-duty, single-piece die-cast aluminum housing. The LED drivers are mounted in direct contact with the casting to promote low operating temperature and long life. The die-cast aluminum door is tethered to provide easy access to the driver if replacement is required. A one-piece silicone gasket seals the door to the fixture housing. The optics is mounted on a versatile, aluminum plate that dissipates heat from the LEDs resulting in longer life of the fixture. The fixture is IP68 and is vibration rated (ANSI C136.31) to insure strength of construction and longevity in the selected application.

Optics: Precision molded, high efficiency optics are precisely designed to shape the distribution, maximizing efficiency and application spacing. Available in Type II, III, IV and V distributions with lumen packages ranging from 6,100 to 18,800 nominal lumens. Light engine configurations consist of 1 or 2 high-efficiency LEDs mounted to metal-core circuit boards to maximize heat dissipation and promote long life (up to 132,000,000 hours at 25°C) per IESNA TM-21. For the ultimate level of spill light control, an optional house shield accessory can be field or factory installed.

Controls: The Prevall LED luminaire control options are designed to be simple to install and easy to use. The Prevall LED luminaire control options are designed to be simple to install and easy to use. The Prevall LED luminaire control options are designed to be simple to install and easy to use.

Electrical: LED drivers are mounted to the fixture for optimal heat sinking and ease of maintenance. Thermal management incorporates both conduction and convection to transfer heat rapidly away from the LED sources for optimal efficiency and light output. Class 1 electronic drivers have a power factor >90%, THD <20%, and an expected life of 100,000 hours with <1% failure rate. Available in 120-277V 50/60Hz, 347V 60Hz or 480V 50/60Hz operation. 480V is compatible for use with 480V Wye systems only. 10K/10 VA surge protection standard. 0-10V dimming driver is standard with leads external to the fixture to accommodate controls capability such as dimming and occupancy. Suitable for ambient temperatures from -40°C to 40°C. Optional 50°C HA (high ambient) available. Standard NEMA 3-PIN twistlock photocontrol receptacle and NEMA 7-PIN twistlock photocontrol receptacles are available as options.

Mounting: Standard pole mount arm is bolted directly to the pole and the fixture slides onto the arm and locks in place with a bolt facilitating quick and easy installation. The versatile, patented, standard mount arm accommodates multiple drill patterns ranging from 1-1/2" to 4-7/8". Removal of the door on the standard mounting arm enables wiring of the fixture without having to access the driver compartment. A knock-out on the standard mounting arm enables round pole mounting. Wall mount and mast arm mounting options are available. Mast arm adapter fits 2-3/8" O.D. tensor.

Finish: Housing and cast parts finished in five-stage super TGSE polyester powder coat paint, 2.5 mil nominal thickness for superior protection against fade and wear. Standard finish is white. Additional color options include black, dark platinum and graphite metallic.

Warranty: Five-year warranty.

CERTIFICATION DATA
 UL and UL Wet Location Listed (UL 818)
 DesignLights Consortium® Qualified
 DesignLights Consortium® Qualified

ENERGY DATA
 Electronic LED Driver
 0.8 Power Factor
 <20% Total Harmonic Distortion
 135-277V/50 and 60Hz, 347V/60Hz, 480V/60Hz
 40°C Minimum Temperature Rating
 40°C Ambient Temperature Rating

EPA
 Effective Projected Area (Eq. F.1.3) 0.75

SHIPPING DATA
 Approximate Net Weight: 11 lbs. (5.0 kg)

Dimensions: 13-1/8" (336mm), 26-13/16" (681mm)

Need help? Tech help line: (888) RAB-1000 Email: sales@rabweb.com Website: www.rabweb.com
 Copyright © 2018 RAB Lighting Inc. All Rights Reserved. Note: Specifications are subject to change at any time without notice.

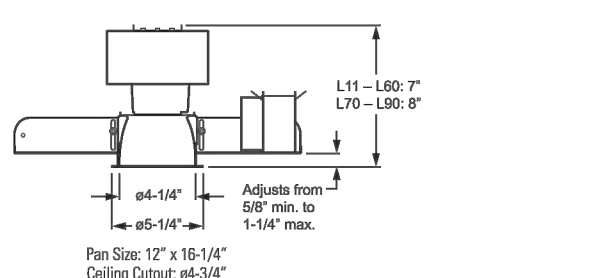
4.5" ROUND LED DOWNLIGHT

PROJECT: "SL6"

PRODUCT: L45

OPTIONS: DIM - 120

CROSS SECTION



ORDERING INFORMATION

LEAD PACKAGE

| LUMEN PACKAGE | NOMINAL LUMENS | DIAMETER | DEPTH | AVERAGE SYSTEM WATTAGE |
|---------------|----------------|----------|--------|------------------------|
| LL1C | 1000 | 4-1/2" | 1-1/2" | 15 |
| LL2C | 1100 | 4-1/2" | 1-1/2" | 18 |
| LL3C | 1300 | 4-1/2" | 1-1/2" | 20 |
| LL4C | 1500 | 4-1/2" | 1-1/2" | 23 |
| LL5C | 1700 | 4-1/2" | 1-1/2" | 26 |
| LL6C | 1900 | 4-1/2" | 1-1/2" | 29 |
| LL7C | 2100 | 4-1/2" | 1-1/2" | 32 |
| LL8C | 2300 | 4-1/2" | 1-1/2" | 35 |
| LL9C | 2500 | 4-1/2" | 1-1/2" | 38 |
| LL10C | 2700 | 4-1/2" | 1-1/2" | 41 |
| LL11C | 2900 | 4-1/2" | 1-1/2" | 44 |
| LL12C | 3100 | 4-1/2" | 1-1/2" | 47 |
| LL13C | 3300 | 4-1/2" | 1-1/2" | 50 |
| LL14C | 3500 | 4-1/2" | 1-1/2" | 53 |
| LL15C | 3700 | 4-1/2" | 1-1/2" | 56 |
| LL16C | 3900 | 4-1/2" | 1-1/2" | 59 |
| LL17C | 4100 | 4-1/2" | 1-1/2" | 62 |
| LL18C | 4300 | 4-1/2" | 1-1/2" | 65 |
| LL19C | 4500 | 4-1/2" | 1-1/2" | 68 |
| LL20C | 4700 | 4-1/2" | 1-1/2" | 71 |
| LL21C | 4900 | 4-1/2" | 1-1/2" | 74 |
| LL22C | 5100 | 4-1/2" | 1-1/2" | 77 |
| LL23C | 5300 | 4-1/2" | 1-1/2" | 80 |

REFLECTOR FINISH

CS Clear semi-specular (standard)
 CG Champagne gold
 GD Gold
 PW Pewter
 SG Satin-glow
 SPC Clear specular
 STB Bronze
 WT White

DRIVER
 Additional dimming drivers available, see Technical Info.
 DIM Driver dimmer for non-dimming applications
 DIM 10% dimming driver provided for 0-10V low voltage applications

VOLTAGE
 120V
 277V

Features:

- Meets for 50,000 hours at 70% lumen maintenance (L70)
- Module lumens from 1100 to 5000
- 2700K, 3000K, 3500K, or 4000K color temperatures, minimum 80 or 84 CRI
- LED module and driver accessible from below ceiling plane for ease of maintenance up to 4000 lumens
- Optional system-integrated emergency LED driver available
- Optional wall location under covered ceiling available when specified with ___CAL or ___CS option
- Patented, etched aluminum, passive heat and dissipates heat for superior thermal management
- Integral one three-field-adjuster to accommodate ceilings up to 1-1/4" thick
- Self-cleaning aluminum reflector offers maximum optical performance and provides easy clean installation without unsightly light leaks
- Adjustable hanger brackets for bar hangers available
- Sturdy one-piece cast construction
- The fixture is pre-drilled ready in the USA.

Need help? Tech help line: (888) RAB-1000 Email: sales@rabweb.com Website: www.rabweb.com
 Copyright © 2018 RAB Lighting Inc. All Rights Reserved. Note: Specifications are subject to change at any time without notice.

McGraw-Edison

DESCRIPTION: The Impact Elite family of wall luminaires is the ideal complement to site design. Incorporating modular LightBAR™ technology, the Impact Elite luminaire provides outstanding uniformity and energy-conscious illumination. Combined with a rugged construction, the Impact Elite luminaire is the ideal facade and security luminaire for zones surrounding schools, office complexes, apartments and recreational facilities. ULULU listed for wet locations.

SPECIFICATION FEATURES

Construction: Heavy-well, die-cast aluminum housing and removable hinged door frame for precise tolerance control and reparability. Hinged door inset for clean mating with housing surface and secured via two captive fasteners. Optional tamper-resistant Torx™ head fasteners offer vandal resistant access to the electrical chamber.

Optics: Choice of six patented, high-efficiency AccuLED Optics™ distributions. Optics are precisely designed to shape the light output, maximizing efficiency and application spacing. AccuLED Optics technology creates consistent distributions with the scalability to meet customized application requirements. Offered Standard in 4000K (± 275K CCT and minimum 70 CRI. Optional 3000K CCT, 5000K CCT and 5700K CCT.

Electrical: LED drivers mount to die-cast aluminum back housing for optimal heat sinking, operation efficiency, and prolonged life. Standard Elite "Hook-N-Lock" mechanism drives feature electronic universal voltage (120-277V 50/60Hz), 347V 60Hz or 480V 50/60Hz operation, greater than 0.9 power factor, less than 20% harmonic distortion, and are suitable for operation in -40°C to 40°C ambient environments. All fixtures are shipped standard with 10K/10VA common and differential mode surge protection. LightBARs feature an IP68 enclosure rating and maintain greater than 90% lumen maintenance at 60,000 hours per IESNA TM-21. Emergency agree options for -20°C ambient environments and occupancy sensor available.

Mounting: Gasketed and zinc plated rigid steel mounting attachment fits directly to 4" J-box or wall with the Impact Elite "Hook-N-Lock" mechanism for quick installation. Secured with two captive corrosion resistant black oxide coated allen head set screws concealed but accessible from bottom of fixture.

Finish: Cast components finished in a five-stage super TGSE polyester powder coat paint, 2.5 mil nominal thickness for superior protection against fade and wear. Standard colors include black, bronze, grey, white, dark platinum and graphite metallic. RAL and custom color matches available. Consult the McGraw-Edison Architectural Colors brochure for the complete selection.

Warranty: Five-year warranty.

CERTIFICATION DATA
 ULADA Listed
 UL974 LMK8 Compliant
 IP68 LightBARs
 50/60/001

ENERGY DATA
 Electronic LED Driver
 0.8 Power Factor
 <20% Total Harmonic Distortion
 120-277V/50 & 60Hz, 347V/60Hz, 480V/60Hz
 40°C Minimum Temperature Rating
 40°C Ambient Temperature Rating

SHIPPING DATA
 Approximate Net Weight: 11 lbs. (5 kg)

Dimensions: Quarter Sphere: 18" (457mm), 18" (457mm), 18" (457mm), 18" (457mm); Wedge: 18" (457mm), 18" (457mm), 18" (457mm), 18" (457mm); Top Wedge: 18" (457mm), 18" (457mm), 18" (457mm), 18" (457mm); 1-2 LightBARs Solid State LED WALL MOUNT LUMINAIRE

Need help? Tech help line: (888) RAB-1000 Email: sales@rabweb.com Website: www.rabweb.com
 Copyright © 2018 RAB Lighting Inc. All Rights Reserved. Note: Specifications are subject to change at any time without notice.

CLED26Y

DESCRIPTION: LED ceiling light with precision optics deliver smooth and uniform distribution. Ideal for mall settings, workspace lighting and other applications requiring a high output commercial grade downlight.

Technical Specifications

Listings: UL Listing: Suitable for Wet Locations, Covered Ceiling Mount Only.

Dark Sky Approved: The International Dark Sky Association has approved this product as a full cutoff, fully shielded luminaire.

IESNA LM-79 & LM-80 Testing: RAB LED luminaires have been tested by an independent laboratory in accordance with IESNA LM-79 and LM-80, and have received the Department of Energy "Lighting Facts" label.

LED Characteristics: Lifespan: 100,000-hour LED lifespan based on IES LM-80 results and TM-21 calculations.

Color Consistency: 3-step MacKam Ellipse binning to achieve consistent future-to-future color.

Color Stability: LED color temperature is warranted to shift no more than 200K in CCT over a 5 year period.

Color Uniformity: RABs range of CCT (Correlated Color Temperature) follows the guidelines of the American National Standard for Specifications for the Chromaticity of Solid State Lighting (SSL) Products, ANSI C78.317-2017.

Electrical: Driver: Constant Current, Class 2, 100-277V, 50/60 Hz, 5V Surge Protection, 720mA, 100-277VAC, 0.4 Arms., Power Factor 98.7%.

THD: 14.7% at 120V

Construction: Maximum Ambient Temperature: Suitable for use in 40°C (104°F) ambient temperatures.

Cold Weather Starting: Minimum starting temperature is -40°C (-40°F)

Thermal Management: Optimized using computational fluid dynamics software to ensure long LED and driver lifespan.

Housing: Precision die-cast aluminum housing and lens frame.

Optical: Lens: Clear tempered glass lens

Gaskets: High-temperature silicone

Finish: Formulated for high-durability and long lasting color.

Green Technology: Mercury and UV free. RoHS compliant components. Polymer powder coat finish formulated without the use of VOC or toxic heavy metals.

Other: Patents: The design of CLED26 is protected by patents pending in US, Canada, China, Taiwan and Mexico.

Buy American Act Compliance: RAB values USA manufacturing! Upon request, RAB may be able to manufacture this product to be compliant with the Buy American Act (BAA). Please contact customer service to request a quote for the product to be made BAA compliant.

Optical: Beam angle/distribution does not account for options/accessories such as accent color with lens, wall wash, acrylic surface rings, or dimmer reflector finishes. Actual beam angle/distribution may vary. Consult factory with complete model number for approximate values.

SHIPPING DATA
 Approximate Net Weight: 11 lbs. (5 kg)

Dimensions: 18" (457mm), 18" (457mm), 18" (457mm), 18" (457mm)

Need help? Tech help line: (888) RAB-1000 Email: sales@rabweb.com Website: www.rabweb.com
 Copyright © 2018 RAB Lighting Inc. All Rights Reserved. Note: Specifications are subject to change at any time without notice.

McGraw-Edison

DESCRIPTION: The Impact Elite family of wall luminaires is the ideal complement to site design. Incorporating modular LightBAR™ technology, the Impact Elite luminaire provides outstanding uniformity and energy-conscious illumination. Combined with a rugged construction, the Impact Elite luminaire is the ideal facade and security luminaire for zones surrounding schools, office complexes, apartments and recreational facilities. ULULU listed for wet locations.

SPECIFICATION FEATURES

Construction: Heavy-well, die-cast aluminum housing and removable hinged door frame for precise tolerance control and reparability. Hinged door inset for clean mating with housing surface and secured via two captive fasteners. Optional tamper-resistant Torx™ head fasteners offer vandal resistant access to the electrical chamber.

Optics: Choice of six patented, high-efficiency AccuLED Optics™ distributions. Optics are precisely designed to shape the light output, maximizing efficiency and application spacing. AccuLED Optics technology creates consistent distributions with the scalability to meet customized application requirements. Offered Standard in 4000K (± 275K CCT and minimum 70 CRI. Optional 3000K CCT, 5000K CCT and 5700K CCT.

Electrical: LED drivers mount to die-cast aluminum back housing for optimal heat sinking, operation efficiency, and prolonged life. Standard Elite "Hook-N-Lock" mechanism drives feature electronic universal voltage (120-277V 50/60Hz), 347V 60Hz or 480V 50/60Hz operation, greater than 0.9 power factor, less than 20% harmonic distortion, and are suitable for operation in -40°C to 40°C ambient environments. All fixtures are shipped standard with 10K/10VA common and differential mode surge protection. LightBARs feature an IP68 enclosure rating and maintain greater than 90% lumen maintenance at 60,000 hours per IESNA TM-21. Emergency agree options for -20°C ambient environments and occupancy sensor available.

Mounting: Gasketed and zinc plated rigid steel mounting attachment fits directly to 4" J-box or wall with the Impact Elite "Hook-N-Lock" mechanism for quick installation. Secured with two captive corrosion resistant black oxide coated allen head set screws concealed but accessible from bottom of fixture.

Finish: Cast components finished in a five-stage super TGSE polyester powder coat paint, 2.5 mil nominal thickness for superior protection against fade and wear. Standard colors include black, bronze, grey, white, dark platinum and graphite metallic. RAL and custom color matches available. Consult the McGraw-Edison Architectural Colors brochure for the complete selection.

Warranty: Five-year warranty.

CERTIFICATION DATA
 ULADA Listed
 UL974 LMK8 Compliant
 IP68 LightBARs
 50/60/001

ENERGY DATA
 Electronic LED Driver
 0.8 Power Factor
 <20% Total Harmonic Distortion
 120-277V/50 & 60Hz, 347V/60Hz, 480V/60Hz
 40°C Minimum Temperature Rating
 40°C Ambient Temperature Rating

SHIPPING DATA
 Approximate Net Weight: 11 lbs. (5 kg)

Dimensions: Quarter Sphere: 18" (457mm), 18" (457mm), 18" (457mm), 18" (457mm); Wedge: 18" (457mm), 18" (457mm), 18" (457mm), 18" (457mm); Top Wedge: 18" (457mm), 18" (457mm), 18" (457mm), 18" (457mm); 1-2 LightBARs Solid State LED WALL MOUNT LUMINAIRE

Need help? Tech help line: (888) RAB-1000 Email: sales@rabweb.com Website: www.rabweb.com
 Copyright © 2018 RAB Lighting Inc. All Rights Reserved. Note: Specifications are subject to change at any time without notice.

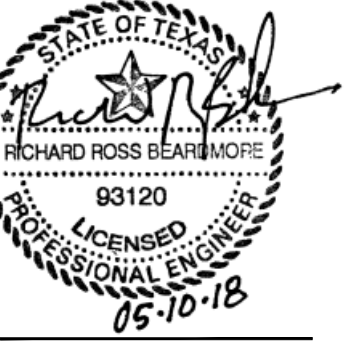
TEXAS BOARD OF PROFESSIONAL ENGINEERS FIRM NO. F-9639

LS&A
 CONSULTING ENGINEERS
 3639 SW Summerfield Drive, Suite A
 Topeka, Kansas 66614-3974
 Telephone: (785) 233-3232
 FAX: (785) 233-0647
 Email: lsapa@lsapa.com
 LSA PROJECT NO. 1804003

Senior Living at Rockwall
 Rockwall, Texas

Senior Living
 at Rockwall LLC.

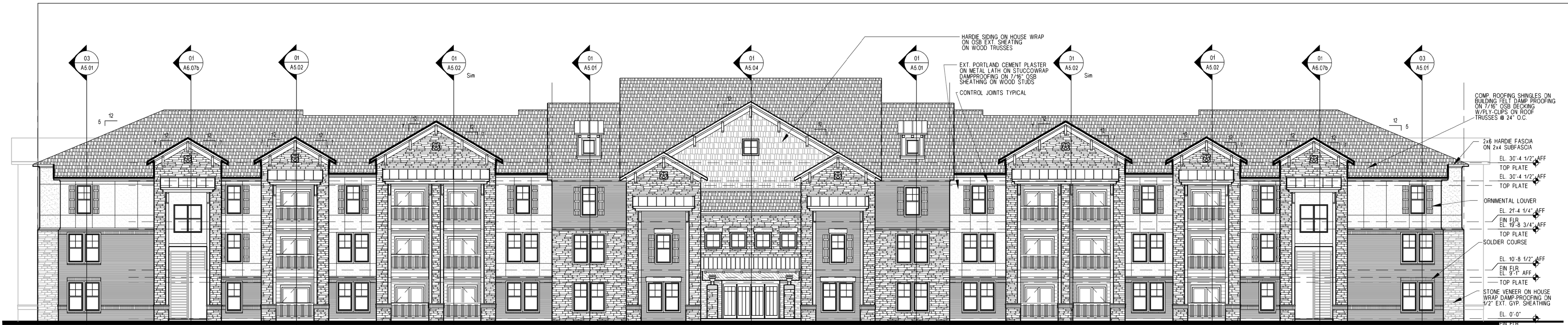
architettura
 architettura inc.
 808 8th St.
 Plano, Texas 75074
 t. 972.509.0088 f. 972.509.0022
 pollacia@architettura-inc.com



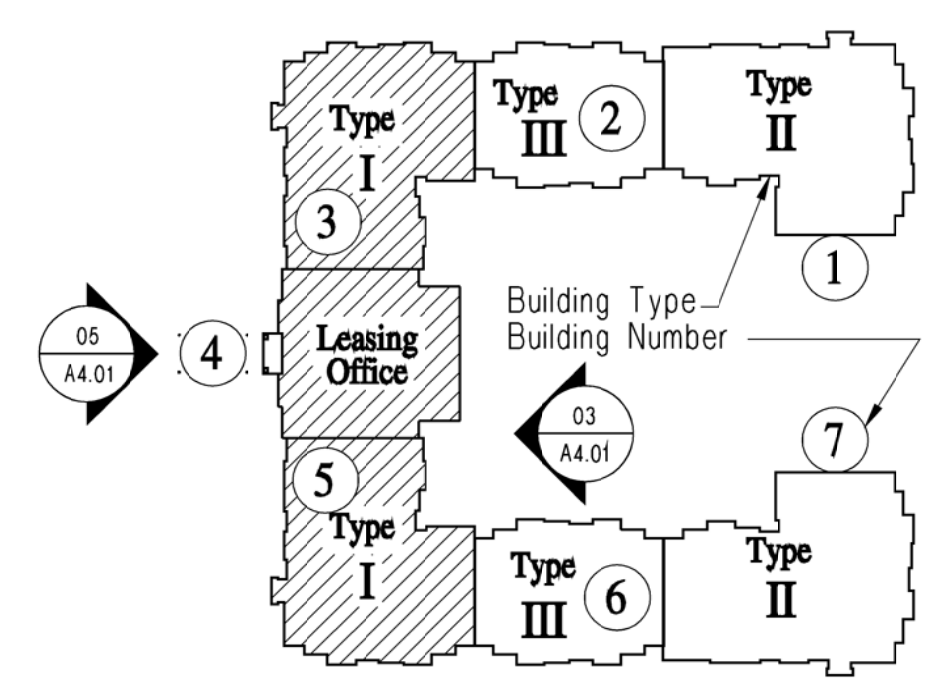
Project No. 160302
 Issue Drawing Log
 16 Feb 2018 Issue for Permit

These documents are the renderings of a professional service, the essence of which is the providing of advice, judgment, opinion or similar professional skill. Copyright Architectura Inc. 01 JUNE 2018. All material contained within constitutes an original work by the architect. The architect owns all copyrights herein.

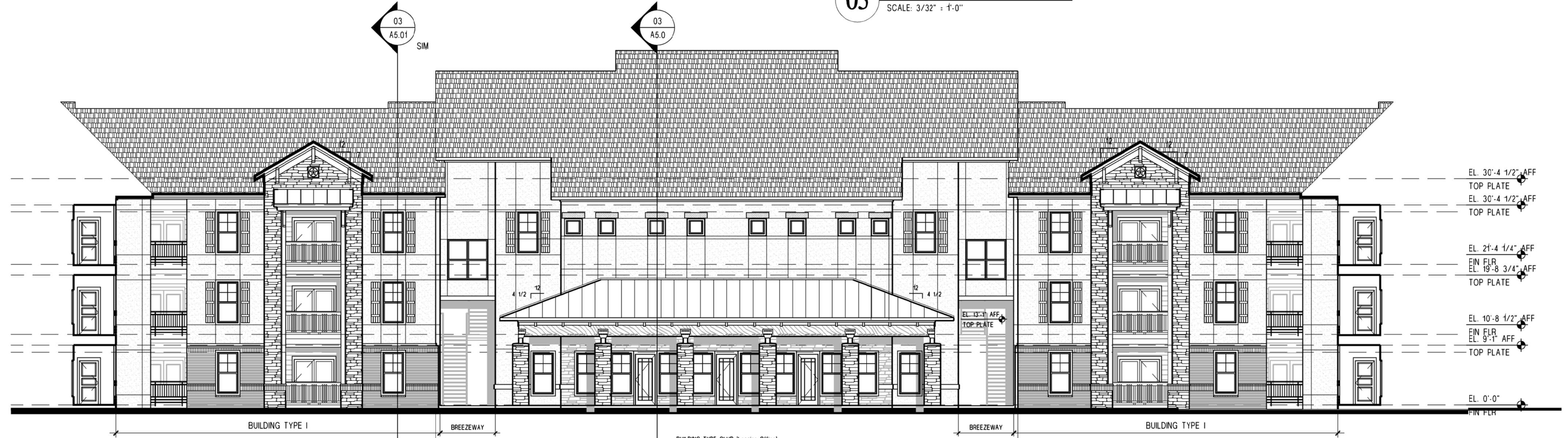
Sheet Title:
 SITE DETAILS
 Drawing No.
 E0.02



05 Front Elevation
SCALE: 3/32" = 1'-0"



Key Plan
No Scale



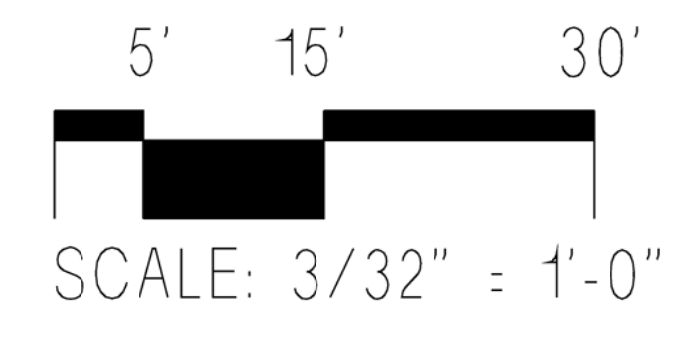
03 Elevation
SCALE: 3/32" = 1'-0"

Alders at Rockwall

100% Masonry Products including
Face Brick, Stone, Stucco and Hardie Siding

architettura

architettura inc.
808 18th street
plano, texas 75074
t. 972.509.0088 f. 972.509.0022
pollacia@architettura-inc.com



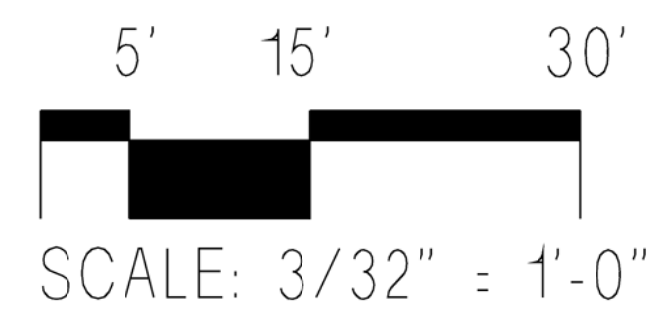


Alders at Rockwall

100% Masonry Products including
Face Brick, Stone, Stucco and Hardie Siding

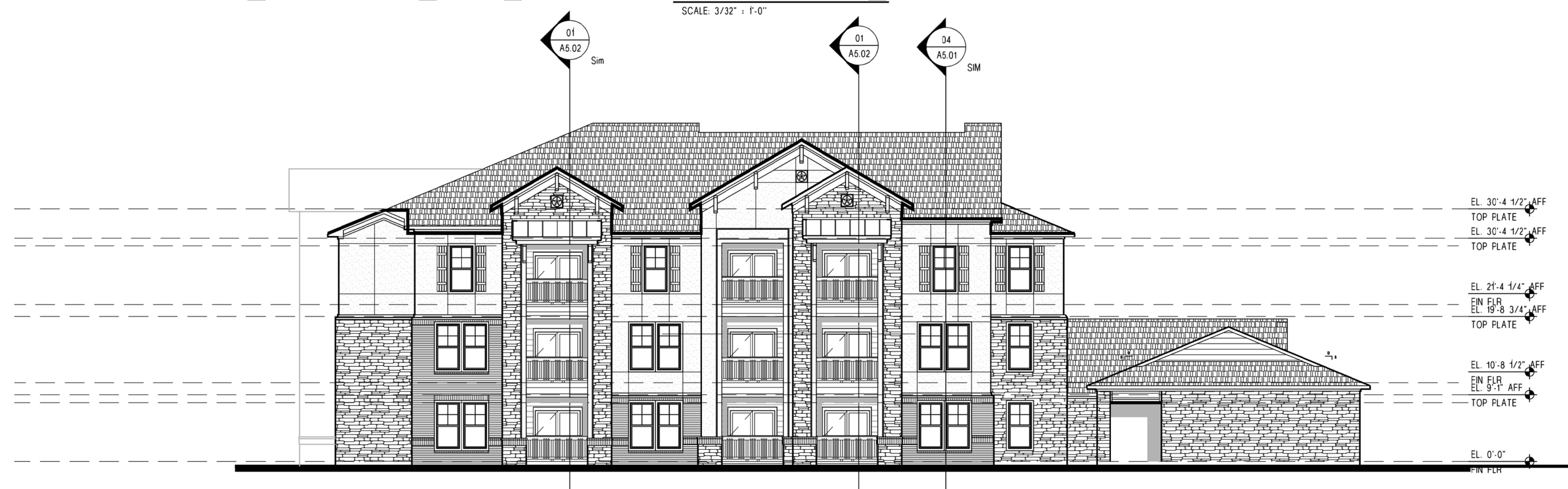
architettura

architettura inc.
808 18th street
plano, texas 75074
t. 972.509.0088 f. 972.509.0022
pollacia@architettura-inc.com

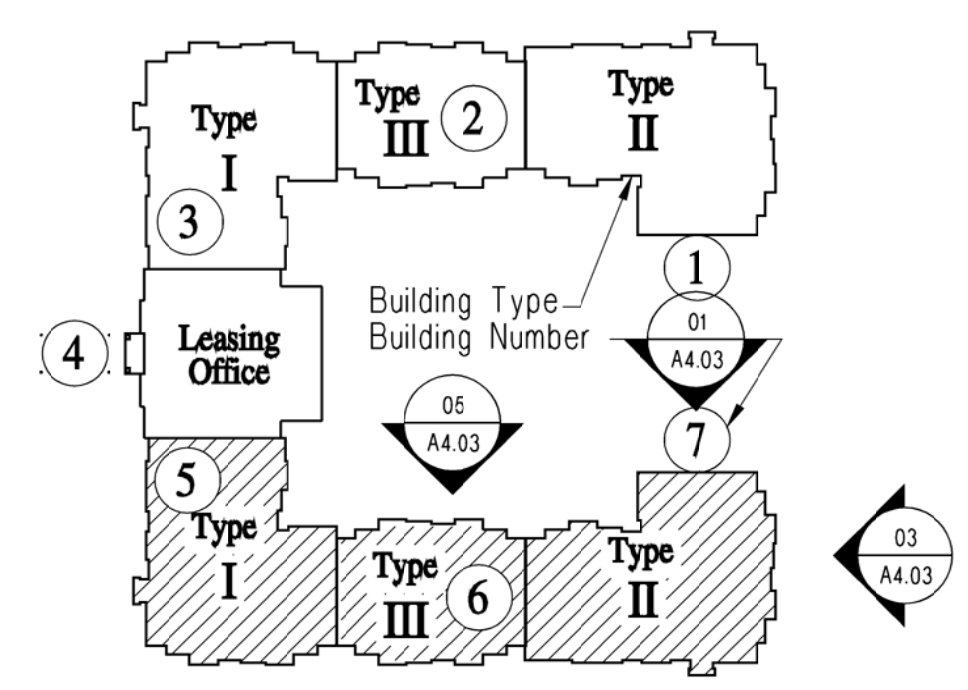




Front Elevation
SCALE: 3/32" = 1'-0"



03 Elevation
SCALE: 3/32" = 1'-0"



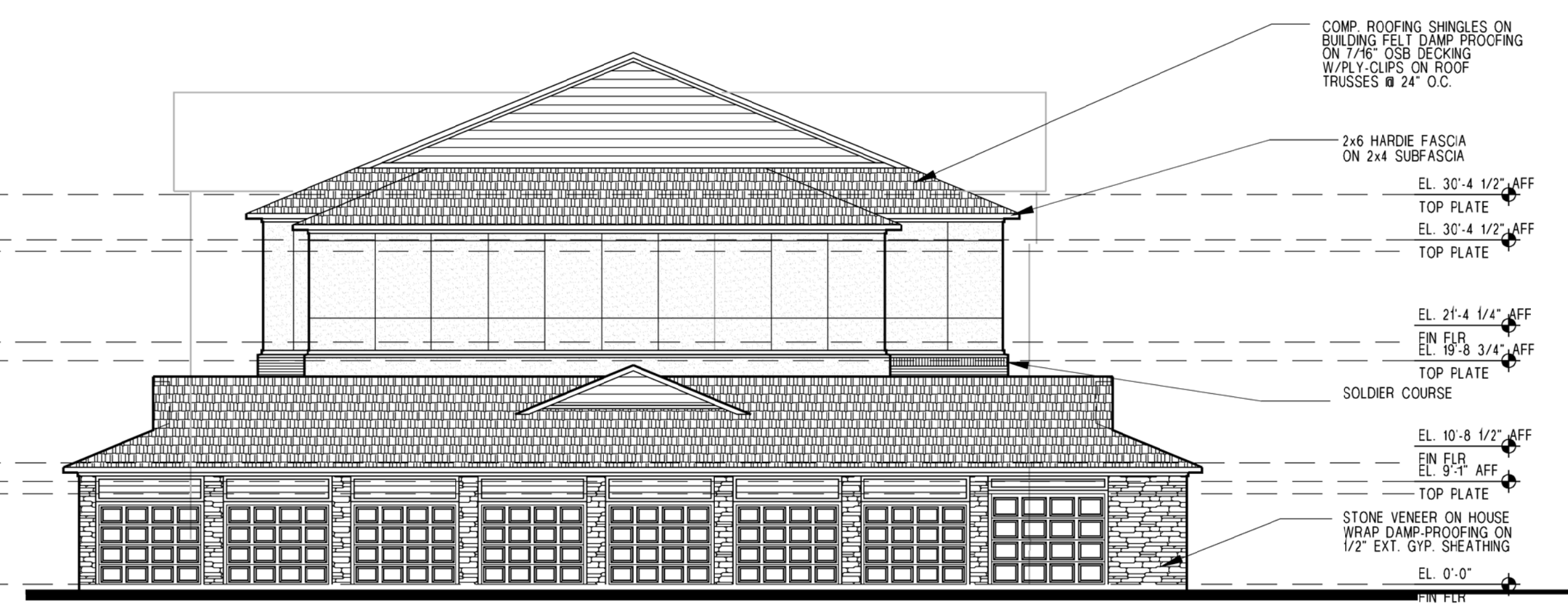
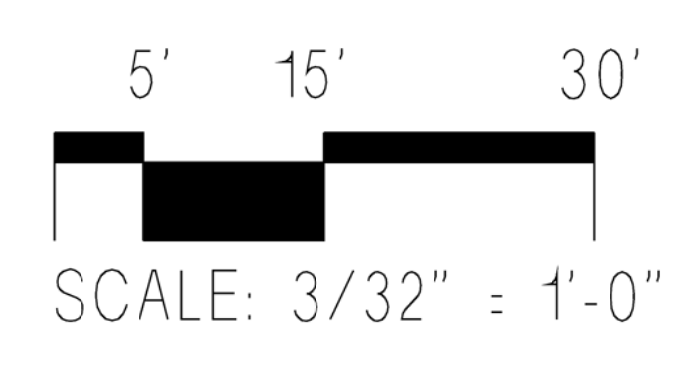
Key Plan
No Scale

Senior Living at Rockwall

100% Masonry Products including
Face Brick, Stone, Stucco and Hardie Siding

architettura

architettura inc.
808 18th street
plano, texas 75074
t. 972.509.0088 f. 972.509.0022
pollacia@architettura-inc.com



01 Elevation
SCALE: 3/32" = 1'-0"



09 Front Elevation



03 Elevation

Alders at Rockwall



05 Front Elevation



03 Elevation

Alders at Rockwall

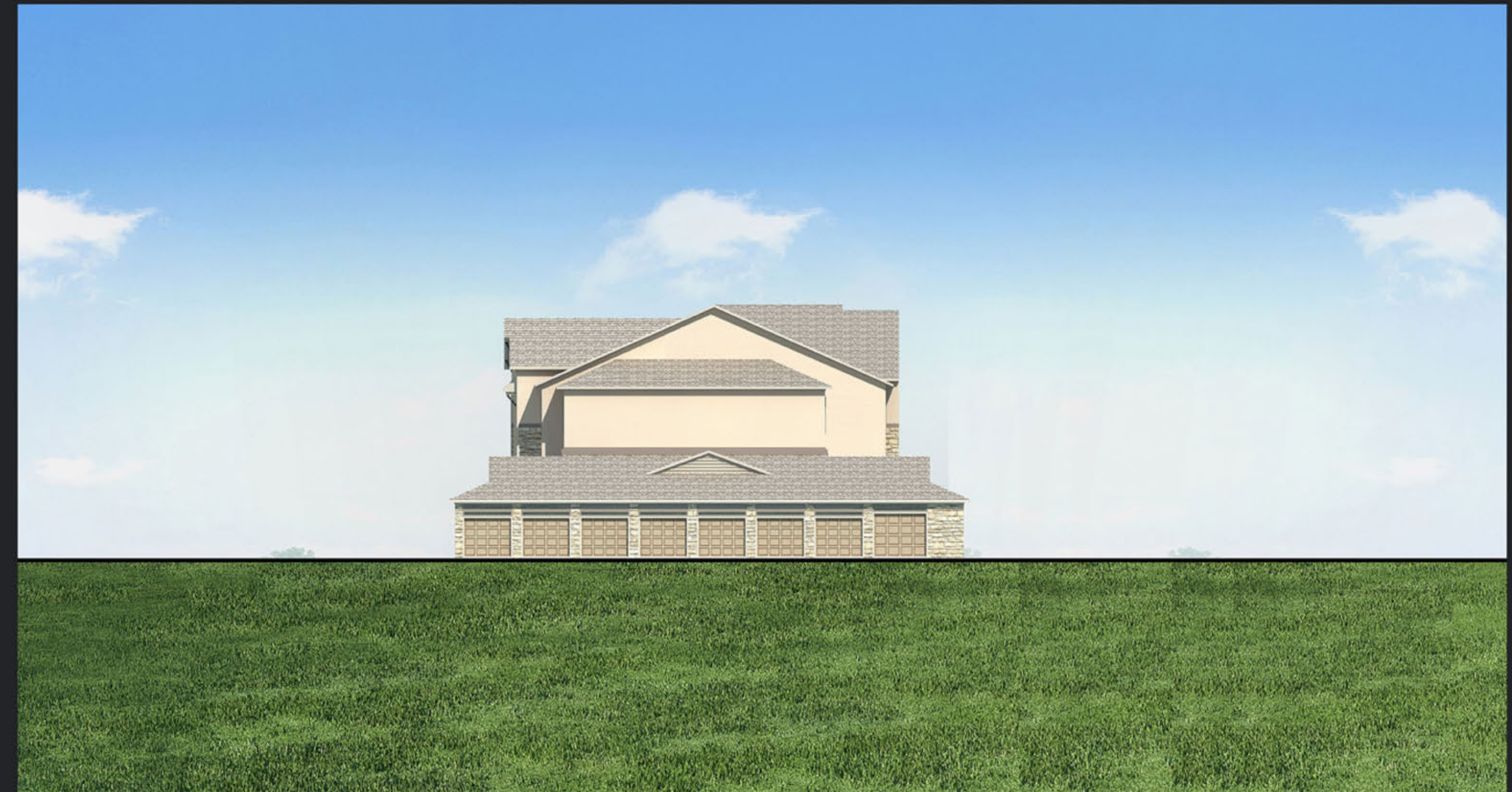


Alders at Rockwall

05 Front Elevation

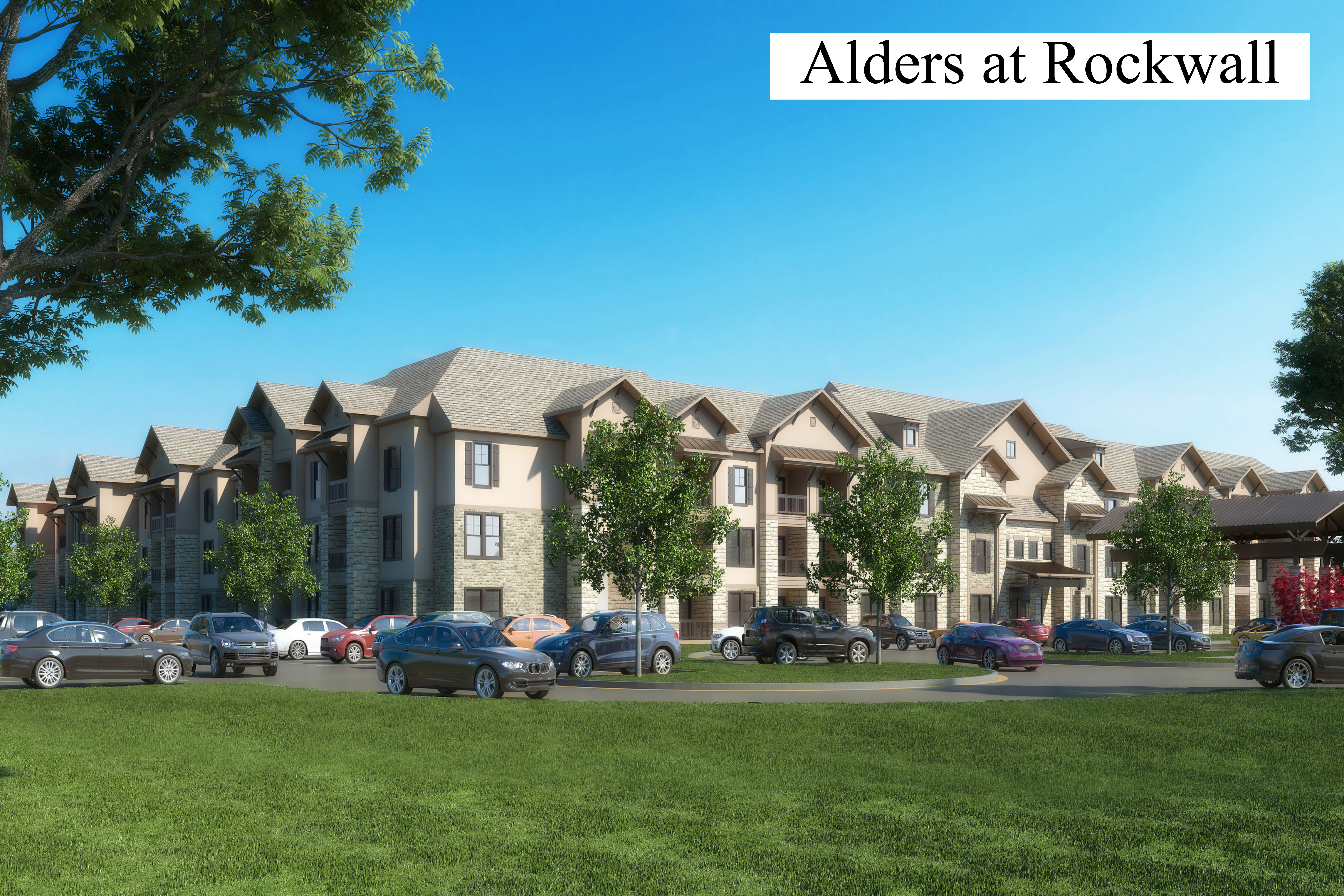


03 Elevation



01 Elevation

Alders at Rockwall





architettura

Stone (1) Face Brick (2) SW 2822 (3) SW 2827 (4) SW 2841 (5) SW 7033 (6) Weatherwood (7) Mustang (8) Sandstone (9)
 Rattlesnake Chopped Oldie Towne Downing Sand Colonial Revival Stone Weathered Shingle Brain Storm Bronze Window Color



Rockwall Senior Living LLC
 1625 Clarke Spring Dr.
 Allen, Texas 75002