
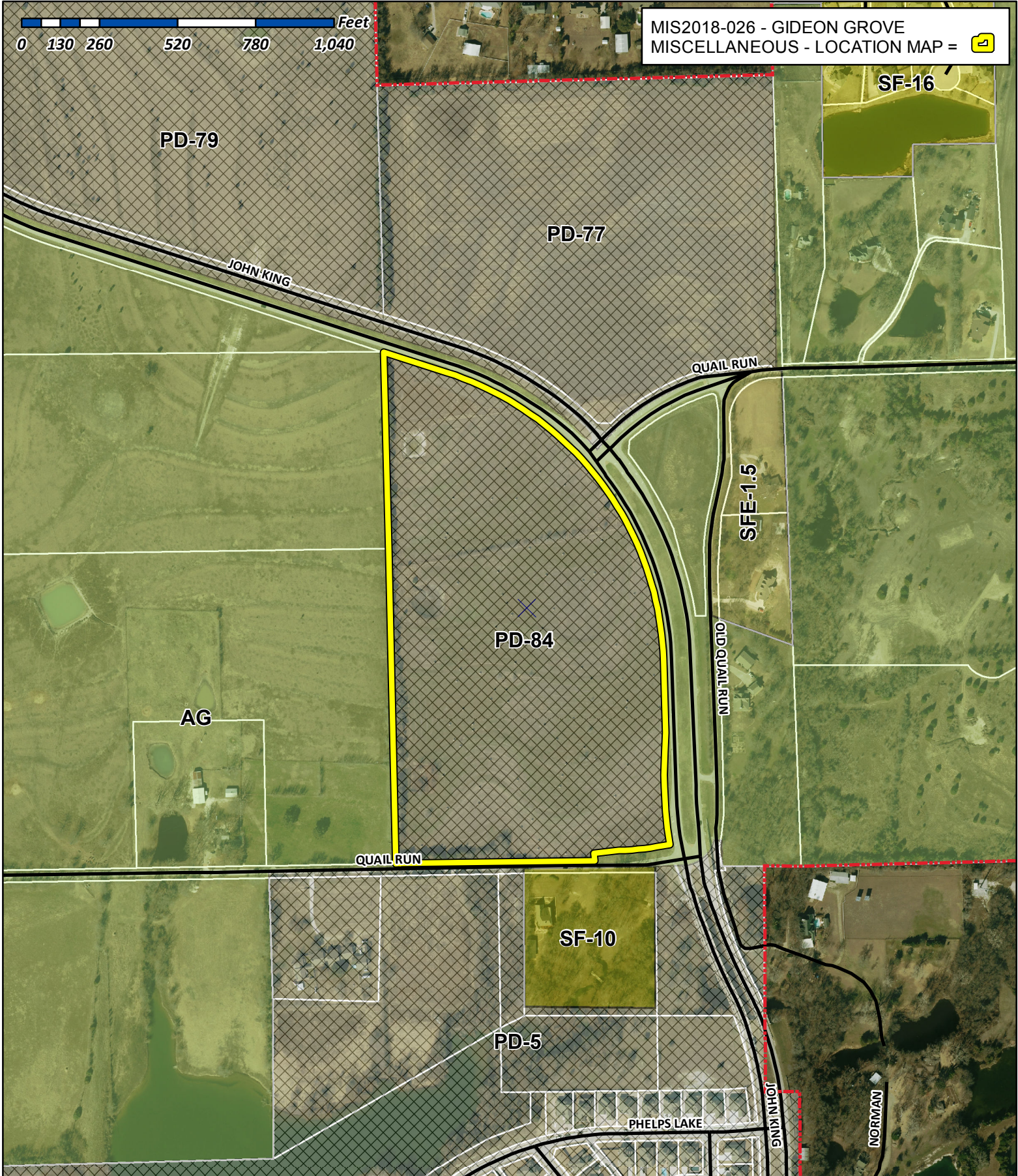


0 130 260 520 780 1,040 Feet

MIS2018-026 - GIDEON GROVE
MISCELLANEOUS - LOCATION MAP = 

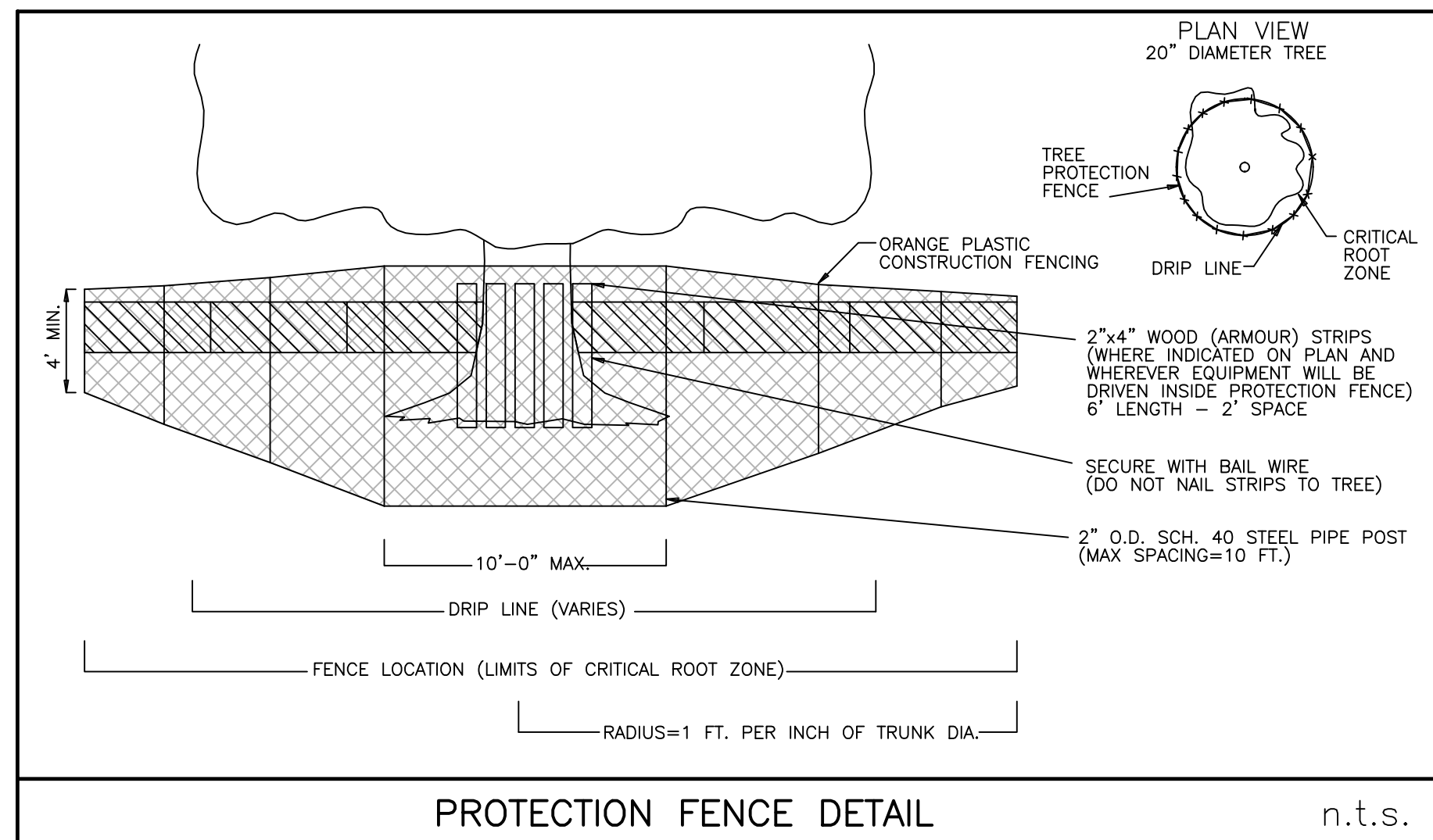


City of Rockwall

Planning & Zoning Department
385 S. Goliad Street
Rockwall, Texas 75032
(P): (972) 771-7745
(W): www.rockwall.com

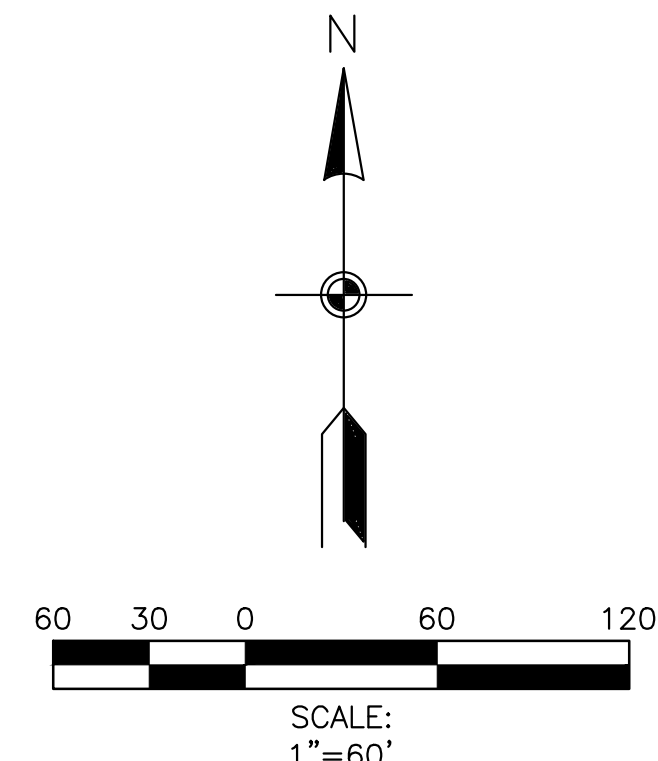
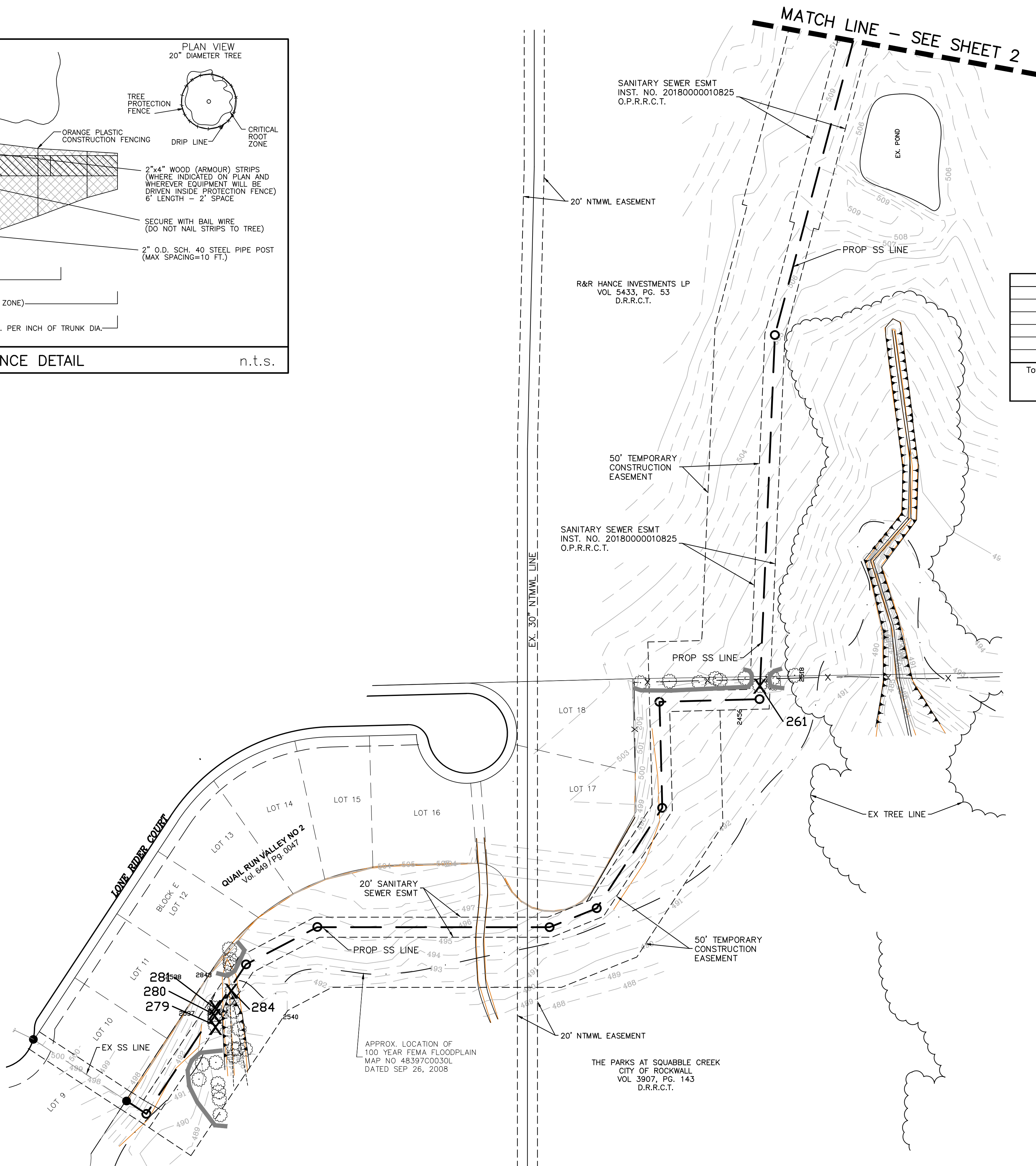
The City of Rockwall GIS maps are continually under development and therefore subject to change without notice. While we endeavor to provide timely and accurate information, we make no guarantees. The City of Rockwall makes no warranty, express or implied, including warranties of merchantability and fitness for a particular purpose. Use of the information is the sole responsibility of the user.





PROTECTION FENCE DETAIL

n.t.s.



TREE NUMBER	DBH (INCHES) - PROTECTED TREE	DBH (INCHES) - NON-PROTECTED TREE	SPECIES	CONDITION	STATUS	PROTECTED
261		8	HACKBERRY	FAIR	REMOVED	NO
279		8	HACKBERRY	FAIR	REMOVED	NO
280	7		ELM	FAIR	REMOVED	YES
281	6		ELM	FAIR	REMOVED	YES
284	19		ELM	FAIR	REMOVED	YES
Total Inches Removed:		48				
Total Unprotected:		16				
Total Protected:		32				

REPLACEMENT TREES SUMMARY	
TOTAL PROTECTED INCHES REMOVED	407
MINIMUM NUMBER OF INCHES PROVIDED WITH GIDEON GROVE DEVELOPMENT (2-3 INCH TREES PER LOT)	426
INCHES REQUIRING MITIGATION	0

LEGEND	
	PROPOSED SANITARY SEWER
	UTILITY EASEMENT
	100 YEAR FLOODPLAIN
	TOP OF BANK
	EXISTING TREE
	EXISTING TREE TO BE REMOVED
	TREE PROTECTION FENCE

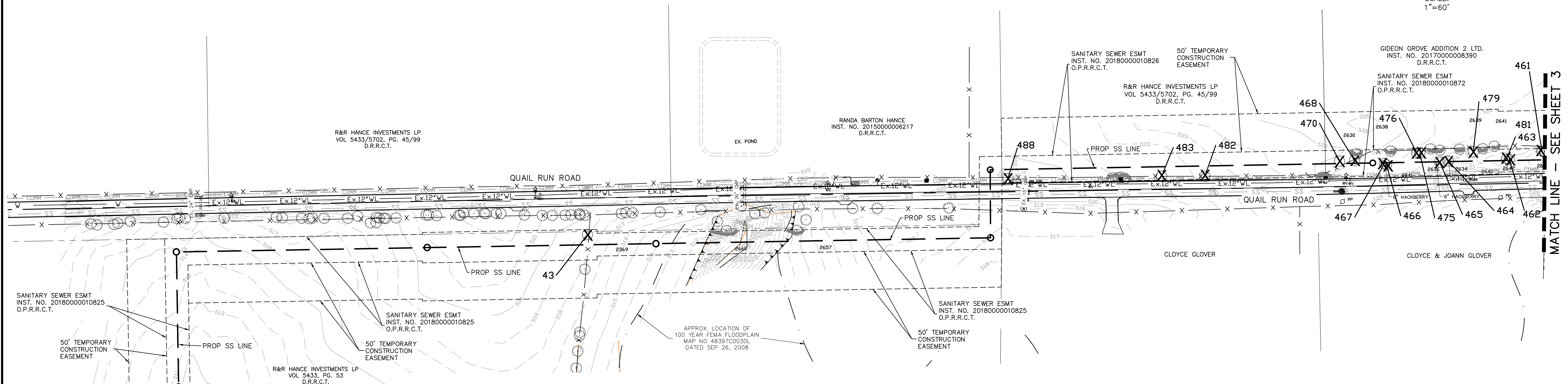
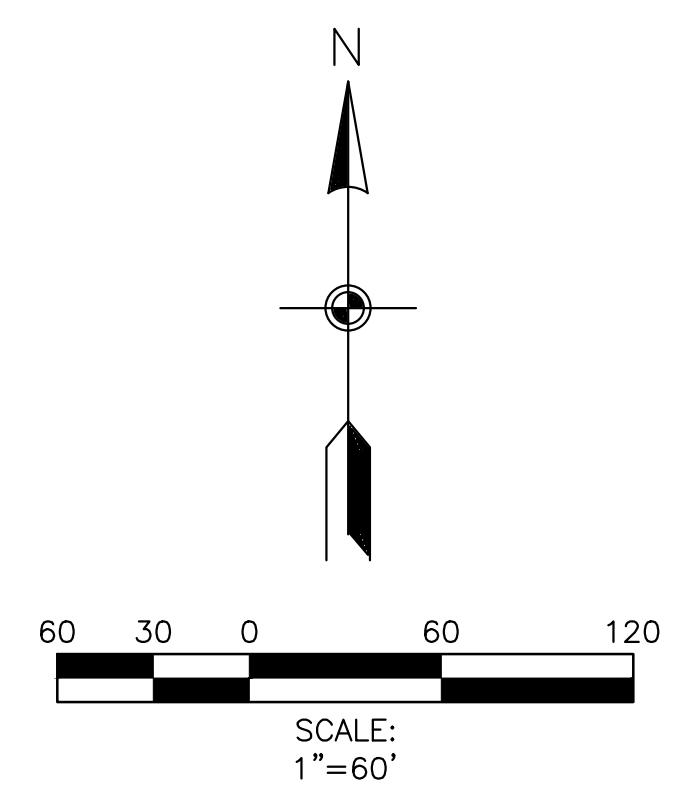
REV.	BY	DATE	DESCRIPTION

BENCHMARKS
 CITY OF ROCKWALL MONUMENT "COR-2"
 ALUMINUM DISK STAMPED "CITY OF ROCKWALL SURVEY MONUMENT" +/- .866'
 EAST OF INTERSECTION OF WILLIAMS STREET AND CARUTH LANE, AND 50' SOUTH
 OF CL OF WILLIAMS STREET. N: 7029731.124, E: 2898589.314, ELEV=529.10
 CITY OF ROCKWALL MONUMENT "COR-4"
 ALUMINUM DISK STAMPED "CITY OF ROCKWALL SURVEY MONUMENT" ON NORTH SIDE
 OF DALTON ROAD +/- 210' WEST OF INTERSECTION OF SH 205 AND DALTON ROAD,
 AND 10' NORTH OF CURB LINE. N: 7040336.992, E: 2592422.633, ELEV=541.67

TREE MITIGATION PLAN
GIDEON GROVE - NORTH
 CITY OF ROCKWALL, ROCKWALL COUNTY, TEXAS

MACATEE ENGINEERING
 DAYTON MACATEE ENGINEERING, LLC
 (Tex. Reg. No. F-456)
 3519 MILES STREET
 DALLAS, TEXAS 75209
 TEL 214-373-1180 * FAX 214-373-6580
 E-MAIL: daytonm@macatee-engineering.com

DESIGNED	CHECKED	DATE	DWG FILE	PROJECT #	SHEET NO.
		07/19/2018	G6_TS	SKR_GG	1 OF 5

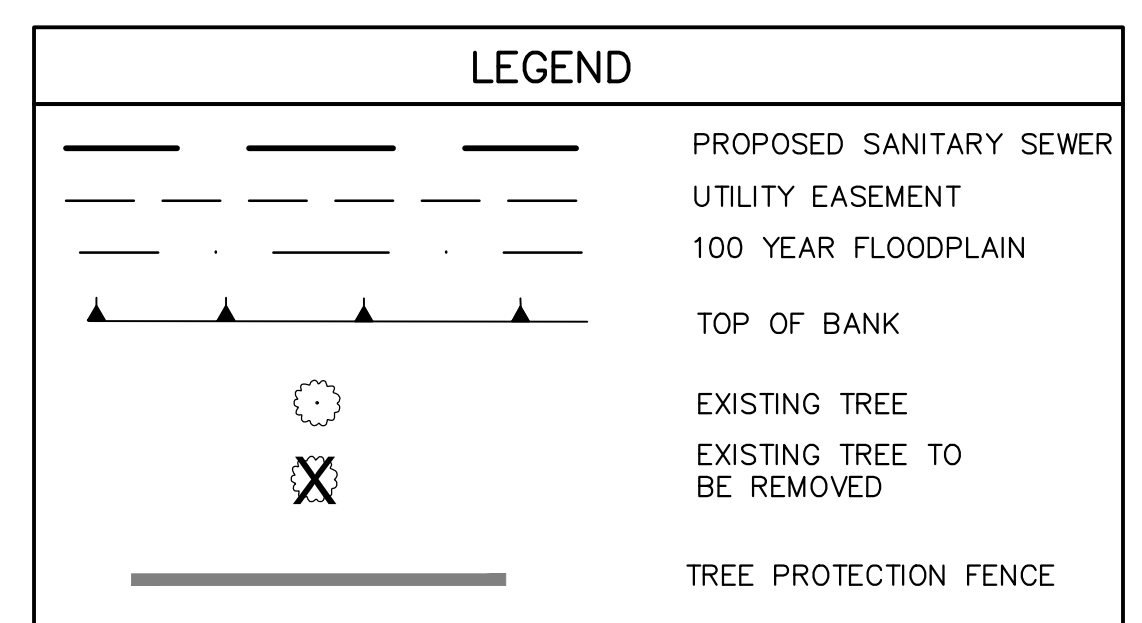
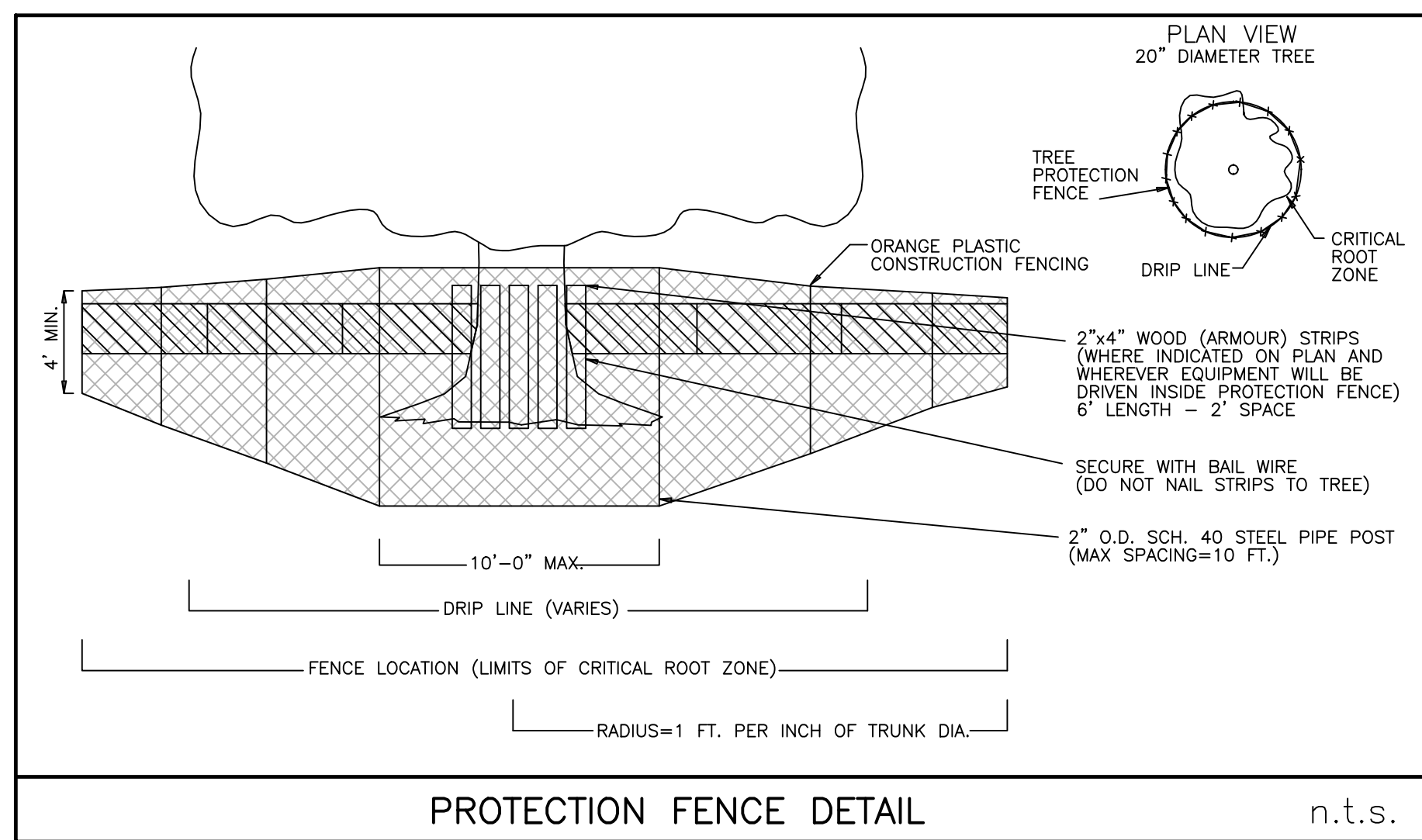


MATCH LINE - SEE SHEET 1

MATCH LINE - SEE SHEET 3

TREE NUMBER	DBH (INCHES) - PROTECTED TREE	DBH (INCHES) - NON-PROTECTED TREE	SPECIES	CONDITION	STATUS	PROTECTED
43	17		HACKBERRY	FAIR	REMOVED	YES
461		10	HACKBERRY	FAIR	REMOVED	NO
462		7	HACKBERRY	FAIR	REMOVED	NO
463		8	HACKBERRY	FAIR	REMOVED	NO
479		8	CEDAR	FAIR	REMOVED	NO
476	11		OAK	FAIR	REMOVED	YES
468	13		CEDAR	FAIR	REMOVED	YES
470	14		CEDAR	FAIR	REMOVED	YES
482		6	HACKBERRY	FAIR	REMOVED	NO
483		7	HACKBERRY	FAIR	REMOVED	NO
488	36		HACKBERRY (MULTI-TRUNK)	FAIR	REMOVED	YES
467		8	HACKBERRY	FAIR	REMOVED	NO
466		7	HACKBERRY	FAIR	REMOVED	NO
475		7	CEDAR	FAIR	REMOVED	NO
465		6	HACKBERRY	FAIR	REMOVED	NO
464		7	CEDAR	FAIR	REMOVED	NO
Total Inches Removed:		172	Only 50% of Protected Inches for Hackberries and Cedar Trees are Counted.			
Total Unprotected:		81				
Total Protected:		51				

REPLACEMENT TREES SUMMARY	
TOTAL PROTECTED INCHES REMOVED	407
MINIMUM NUMBER OF INCHES PROVIDED WITH GIDEON GROVE DEVELOPMENT (2-3 INCH TREES PER LOT)	426
INCHES REQUIRING MITIGATION	0



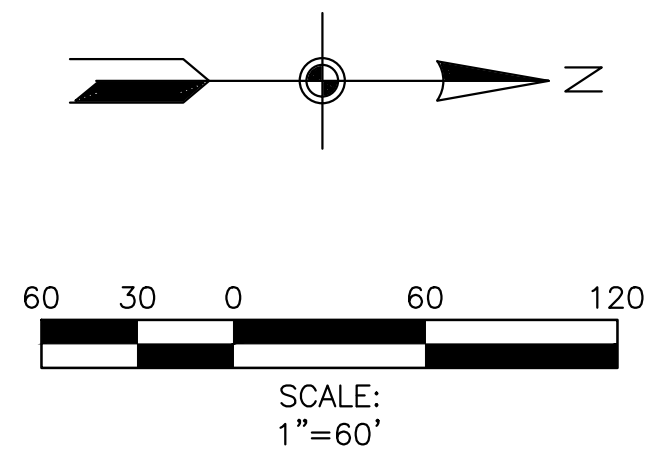
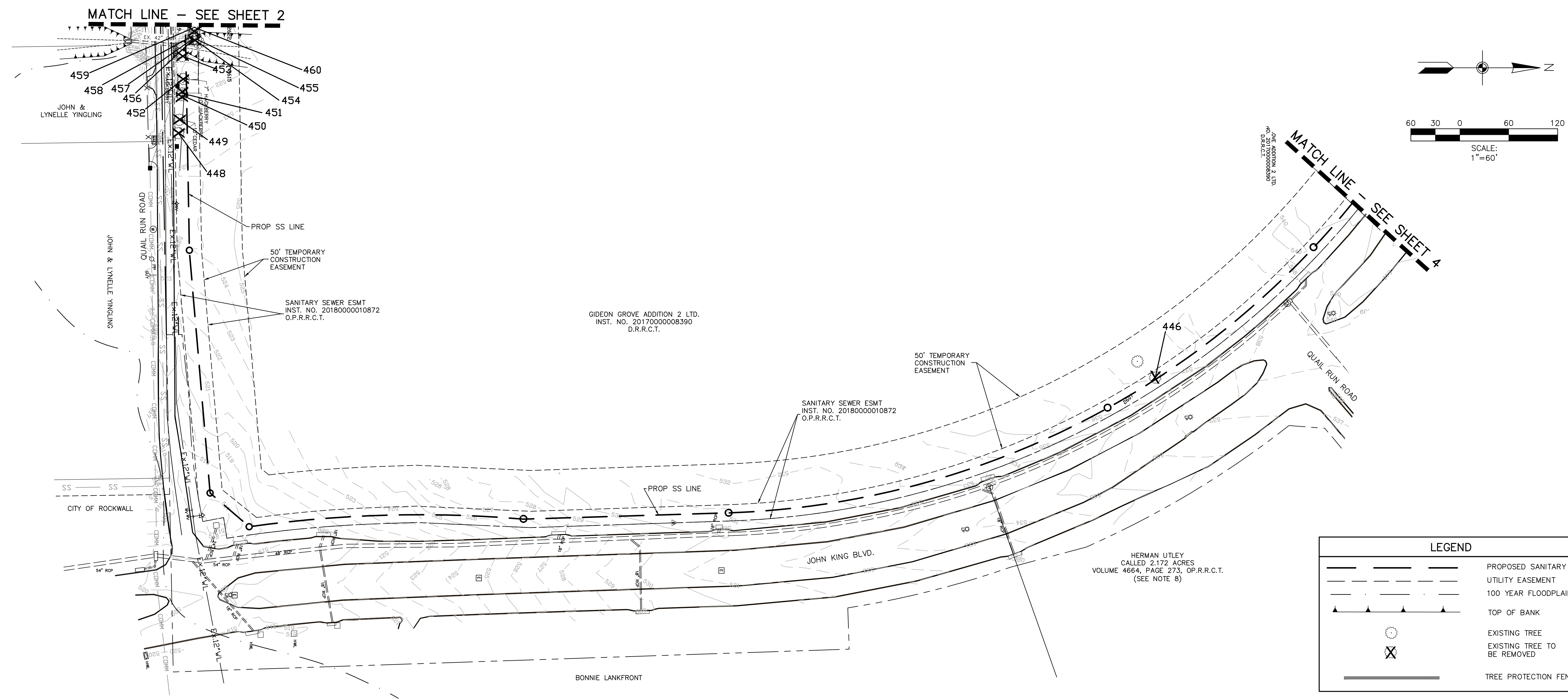
REV.	BY	DATE	DESCRIPTION

BENCHMARKS
 CITY OF ROCKWALL MONUMENT "COR-2"
 ALUMINUM DISK STAMPED "CITY OF ROCKWALL SURVEY MONUMENT" +/- .866'
 EAST OF INTERSECTION OF WILLIAMS STREET AND CARUTH LANE, AND 50' SOUTH
 OF CL OF WILLIAMS STREET. N: 7029731.124, E: 2598589.314, ELEV=529.10
 CITY OF ROCKWALL MONUMENT "COR-4"
 ALUMINUM DISK STAMPED "CITY OF ROCKWALL SURVEY MONUMENT" ON NORTH SIDE
 OF DALTON ROAD +/- 210' WEST OF INTERSECTION OF SH 206 AND DALTON ROAD,
 AND 10' NORTH OF CURB LINE. N: 7040336.992, E: 2592422.633, ELEV=541.67

TREE MITIGATION PLAN
GIDEON GROVE - NORTH
 CITY OF ROCKWALL, ROCKWALL COUNTY, TEXAS

MACATEE ENGINEERING
 DAYTON MACATEE ENGINEERING, LLC
 (Tex. Reg. No. F-456)
 3519 MILES STREET
 DALLAS, TEXAS 75209
 TEL 214-373-1180 * FAX 214-373-6580
 E-MAIL: daytonm@macatee-engineering.com

DESIGNED	CHECKED	DATE	DWG FILE	PROJECT #	SHEET NO.
		07/19/2018	G6_TS	SKR_GG	2 OF 5



LEGEND	
	PROPOSED SANITARY SEWER
	UTILITY EASEMENT
	100 YEAR FLOODPLAIN
	TOP OF BANK
	EXISTING TREE
	EXISTING TREE TO BE REMOVED
	TREE PROTECTION FENCE

TREE NUMBER	DBH (INCHES) - PROTECTED TREE	DBH (INCHES) - NON-PROTECTED TREE	SPECIES	CONDITION	STATUS	PROTECTED
446	11		CEDAR	FAIR	REMOVED	YES
460		7	HACKBERRY	FAIR	REMOVED	NO
455		8	HACKBERRY	FAIR	REMOVED	NO
454		7	HACKBERRY	FAIR	REMOVED	NO
451		10	HACKBERRY	FAIR	REMOVED	NO
450		8	HACKBERRY	FAIR	REMOVED	NO
449		10	CEDAR	FAIR	REMOVED	NO
448		10	CEDAR	FAIR	REMOVED	NO
453		7	HACKBERRY	FAIR	REMOVED	NO
459		8	HACKBERRY	FAIR	REMOVED	NO
458	11		HACKBERRY	FAIR	REMOVED	YES
457		7	HACKBERRY	FAIR	REMOVED	NO
456		8	HACKBERRY	FAIR	REMOVED	NO
452		7	HACKBERRY	FAIR	REMOVED	NO
Total Inches Removed:	119	Only 50% of removed inches for Hackberries and Cedar Trees are Counted.				
Total Unprotected:	97					
Total Protected:	11					

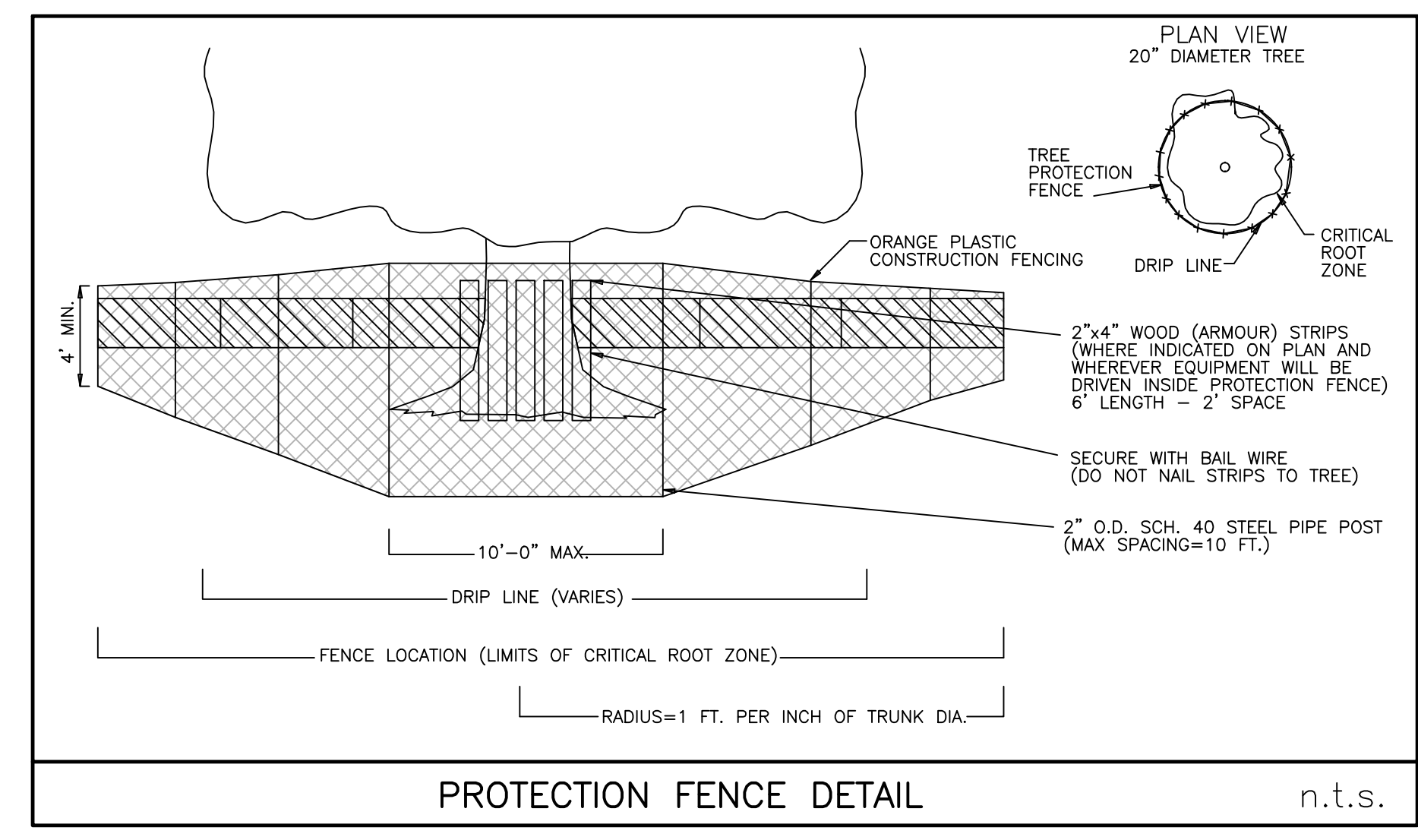
REPLACEMENT TREES SUMMARY	
TOTAL PROTECTED INCHES REMOVED	407
MINIMUM NUMBER OF INCHES PROVIDED WITH GIDEON GROVE DEVELOPMENT (2-3 INCH TREES PER LOT)	426
INCHES REQUIRING MITIGATION	0

REV.	BY	DATE	DESCRIPTION

BENCHMARKS

CITY OF ROCKWALL MONUMENT "COR-2"
ALUMINUM DISK STAMPED "CITY OF ROCKWALL SURVEY MONUMENT" +/- .866'
EAST OF INTERSECTION OF WILLIAMS STREET AND CARUTH LANE, AND 50' SOUTH
OF CL OF WILLIAMS STREET. N: 7029731.124, E: 2598589.314, ELEV=529.10

CITY OF ROCKWALL MONUMENT "COR-4"
ALUMINUM DISK STAMPED "CITY OF ROCKWALL SURVEY MONUMENT" ON NORTH SIDE
OF DALTON ROAD +/- 210' WEST OF INTERSECTION OF SH 205 AND DALTON ROAD,
AND 10' NORTH OF CURB LINE. N: 7040336.992, E: 2592422.633, ELEV=541.67



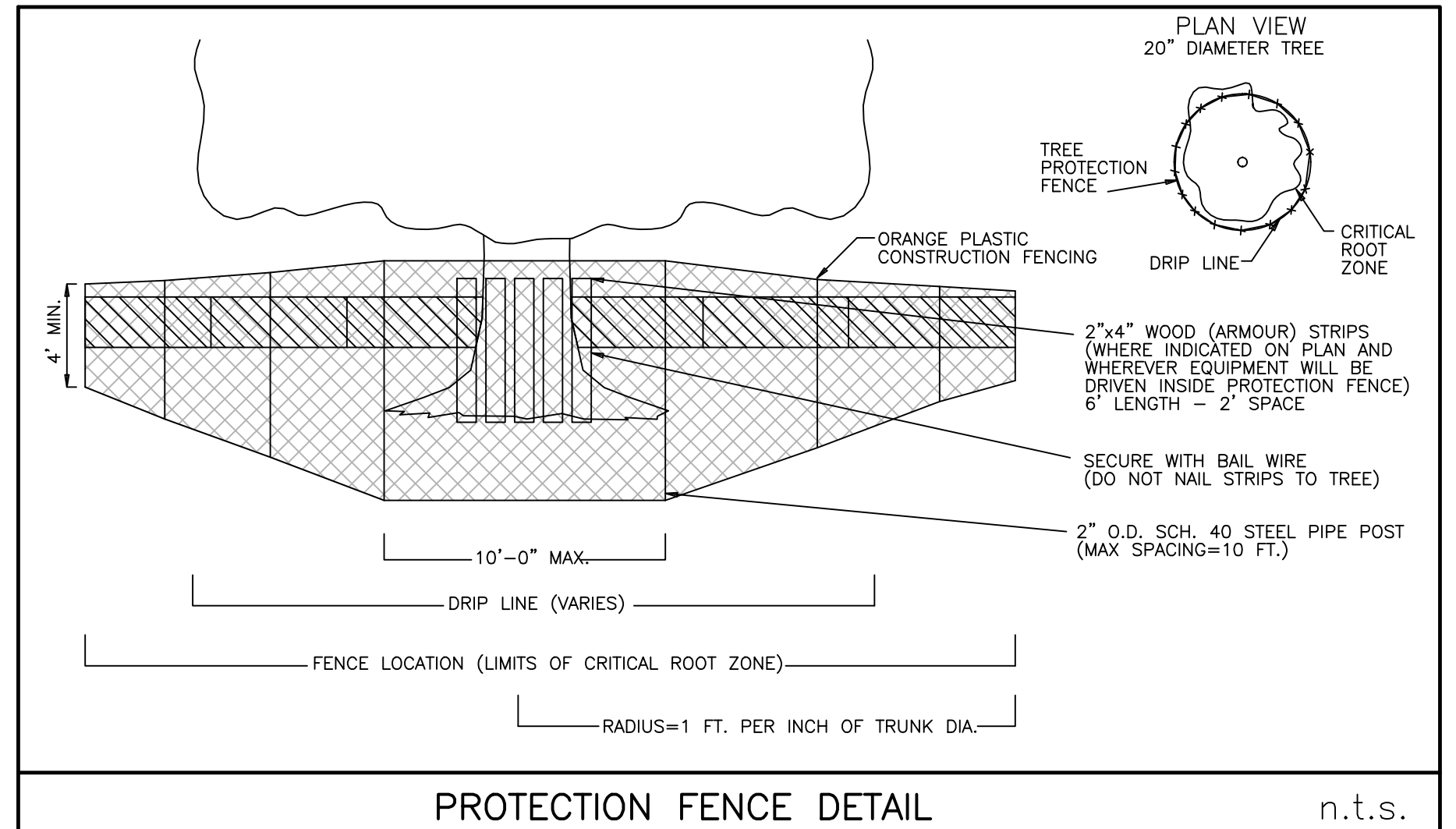
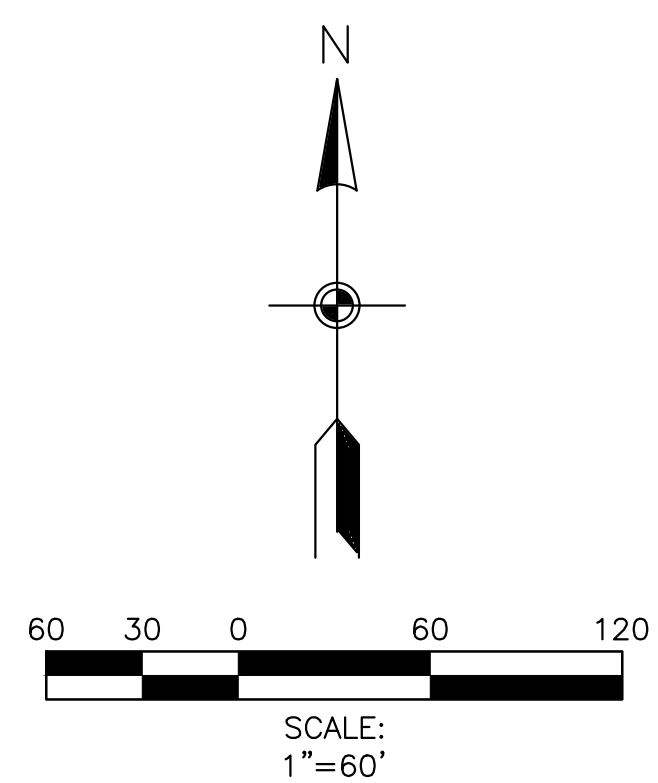
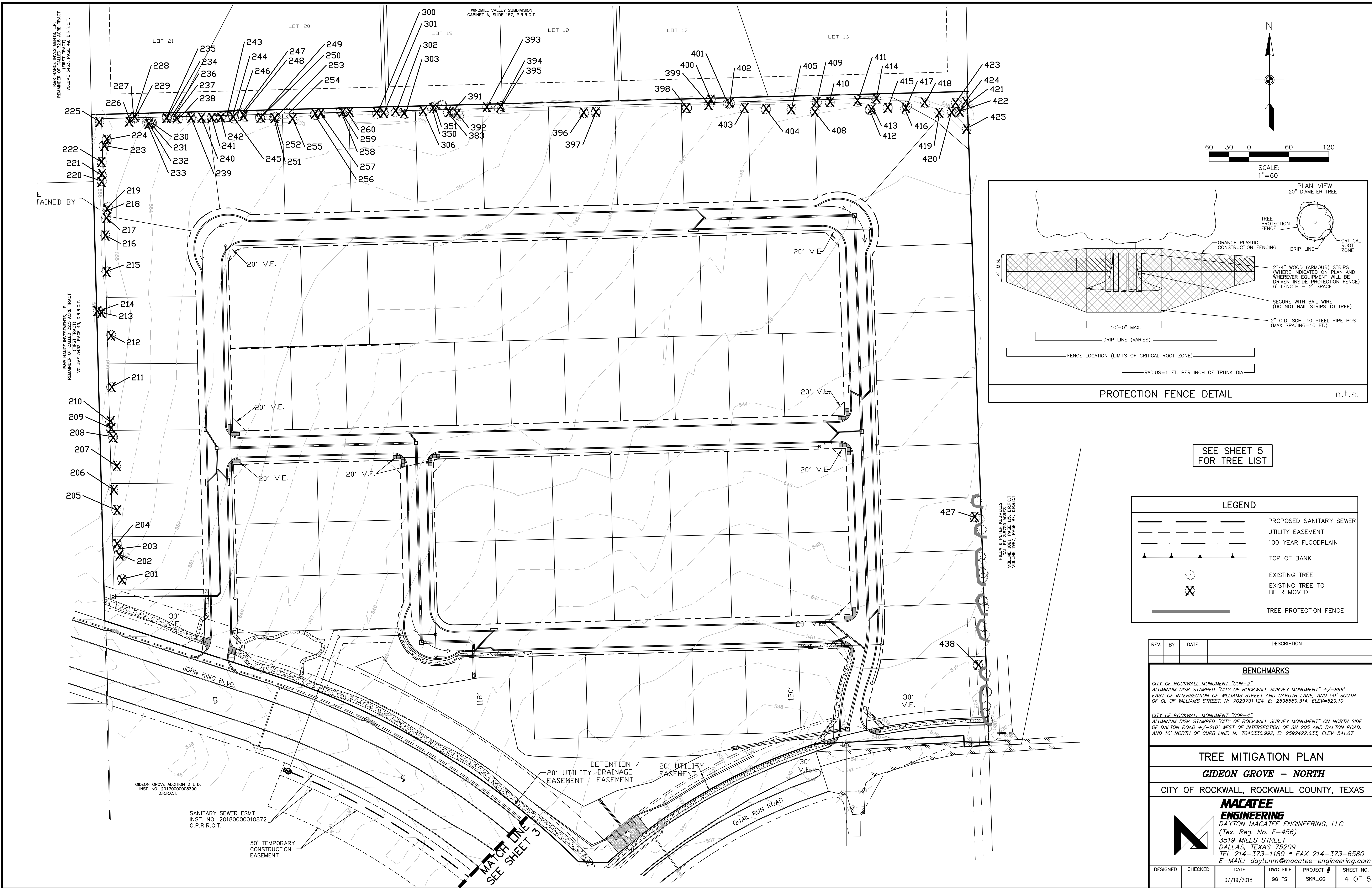
TREE MITIGATION PLAN

GIDEON GROVE - NORTH

CITY OF ROCKWALL, ROCKWALL COUNTY, TEXAS

MACATEE ENGINEERING
DAYTON MACATEE ENGINEERING, LLC
(Tex. Reg. No. F-456)
3519 MILES STREET
DALLAS, TEXAS 75209
TEL 214-373-1180 * FAX 214-373-6580
E-MAIL: daytonm@macatee-engineering.com

DESIGNED	CHECKED	DATE	DWG FILE	PROJECT #	SHEET NO.
		07/19/2018	GG_TS	SKR_GG	3 OF 5



SEE SHEET 5 FOR TREE LIST

LEGEND	
	PROPOSED SANITARY SEWER
	UTILITY EASEMENT
	100 YEAR FLOODPLAIN
	TOP OF BANK
	EXISTING TREE
	EXISTING TREE TO BE REMOVED
	TREE PROTECTION FENCE

REV.	BY	DATE	DESCRIPTION

BENCHMARKS

CITY OF ROCKWALL MONUMENT "COR-2"
ALUMINUM DISK STAMPED "CITY OF ROCKWALL SURVEY MONUMENT" +/- .866'
EAST OF INTERSECTION OF WILLIAMS STREET AND CARUTH LANE, AND 50' SOUTH
OF CL OF WILLIAMS STREET. N: 7029731.124, E: 2598589.314, ELEV=529.10

CITY OF ROCKWALL MONUMENT "COR-4"
ALUMINUM DISK STAMPED "CITY OF ROCKWALL SURVEY MONUMENT" ON NORTH SIDE
OF DALTON ROAD +/- .210' WEST OF INTERSECTION OF SH 205 AND DALTON ROAD,
AND 10' NORTH OF CURB LINE. N: 7040336.992, E: 2592422.633, ELEV=541.67

TREE MITIGATION PLAN
GIDEON GROVE - NORTH
CITY OF ROCKWALL, ROCKWALL COUNTY, TEXAS

MACATEE ENGINEERING
DAYTON MACATEE ENGINEERING, LLC
(Tex. Reg. No. F-456)
3519 MILES STREET
DALLAS, TEXAS 75209
TEL 214-373-1180 * FAX 214-373-6580
E-MAIL: daytonm@macatee-engineering.com

DESIGNED	CHECKED	DATE	DWG FILE	PROJECT #	SHEET NO.
		07/19/2018	G6_TS	SKR_GG	4 OF 5

GIDEON GROVE ADDITION 2 LTD.
INST. NO. 2017000008390
D.R.R.C.T.

SANITARY SEWER ESMT
INST. NO. 2018000010872
O.P.R.C.T.

50' TEMPORARY
CONSTRUCTION
EASEMENT

MATCH LINE
SEE SHEET 3

HILDA & PETER VOLAVELIS
CALLED 347250 ADRES
VOLUME 1897, PAGE 97, D.R.R.C.T.

TREE NUMBER	DBH (INCHES) - PROTECTED TREE	DBH (INCHES) - NON-PROTECTED TREE	SPECIES	CONDITION	STATUS	PROTECTED
201		7	CEDAR	FAIR	REMOVED	NO
202		7	CEDAR	FAIR	REMOVED	NO
203		10	CEDAR	FAIR	REMOVED	NO
204		8	CEDAR	FAIR	REMOVED	NO
205		10	CEDAR	FAIR	REMOVED	NO
206		7	CEDAR	FAIR	REMOVED	NO
207		7	CEDAR	FAIR	REMOVED	NO
208		7	CEDAR	FAIR	REMOVED	NO
209		8	CEDAR	FAIR	REMOVED	NO
210		8	CEDAR	FAIR	REMOVED	NO
211		7	CEDAR	FAIR	REMOVED	NO
212		7	CEDAR	FAIR	REMOVED	NO
213		8	HACKBERRY	FAIR	REMOVED	NO
214		8	HACKBERRY	FAIR	REMOVED	NO
215		8	CEDAR	FAIR	REMOVED	NO
216		7	CEDAR	FAIR	REMOVED	NO
217		8	CEDAR	FAIR	REMOVED	NO
218		7	CEDAR	FAIR	REMOVED	NO
219		6	CEDAR	FAIR	REMOVED	NO
220		8	CEDAR	FAIR	REMOVED	NO
221		7	CEDAR	FAIR	REMOVED	NO
222	11		CEDAR	FAIR	REMOVED	YES
223		7	CEDAR	FAIR	REMOVED	NO
224		7	CEDAR	FAIR	REMOVED	NO
225		7	CEDAR	FAIR	REMOVED	NO
226		7	HACKBERRY	FAIR	REMOVED	NO
227	12		HACKBERRY	FAIR	REMOVED	YES
228		9	HACKBERRY	FAIR	REMOVED	NO
229		7	HACKBERRY	FAIR	REMOVED	NO
230	24		HACKBERRY	FAIR	REMOVED	NO
231		9	HACKBERRY	FAIR	REMOVED	YES
232		10	HACKBERRY	FAIR	REMOVED	NO
233	14		HACKBERRY	FAIR	REMOVED	YES
234	18		HACKBERRY	FAIR	REMOVED	YES
235	12		HACKBERRY	FAIR	REMOVED	YES
236		7	HACKBERRY	FAIR	REMOVED	NO
237		8	HACKBERRY	FAIR	REMOVED	NO
238		8	HACKBERRY	FAIR	REMOVED	NO
239		8	HACKBERRY (MULTI-TRUNK)	FAIR	REMOVED	NO
240	40		HACKBERRY	FAIR	REMOVED	YES
241	18		HACKBERRY	FAIR	REMOVED	YES
242	11		HACKBERRY	FAIR	REMOVED	YES
243	18		HACKBERRY	FAIR	REMOVED	YES
244	15		HACKBERRY	FAIR	REMOVED	YES
245	13		ELM	FAIR	REMOVED	YES
246		8	HACKBERRY	FAIR	REMOVED	NO
247		10	HACKBERRY	FAIR	REMOVED	NO
248		9	HACKBERRY	FAIR	REMOVED	NO
249		8	HACKBERRY	FAIR	REMOVED	NO
250	13		HACKBERRY	FAIR	REMOVED	YES
251		7	HACKBERRY	FAIR	REMOVED	NO
252	12		HACKBERRY	FAIR	REMOVED	YES
253		9	HACKBERRY	FAIR	REMOVED	NO
254	14		HACKBERRY	FAIR	REMOVED	YES
255		8	HACKBERRY	FAIR	REMOVED	NO
256	14		HACKBERRY	FAIR	REMOVED	YES
257	11		HACKBERRY	FAIR	REMOVED	YES
258		6	HACKBERRY	FAIR	REMOVED	NO
259	20		HACKBERRY	FAIR	REMOVED	YES
260		9	HACKBERRY	FAIR	REMOVED	NO
300		8	HACKBERRY	FAIR	REMOVED	NO
301	11		HACKBERRY	FAIR	REMOVED	YES
302	17		HACKBERRY	FAIR	REMOVED	YES
303	14		HACKBERRY	FAIR	REMOVED	YES
306	12		HACKBERRY	FAIR	REMOVED	YES
350		10	HACKBERRY	FAIR	REMOVED	NO
351		6	HACKBERRY	FAIR	REMOVED	NO
383	13		HACKBERRY	FAIR	REMOVED	YES
391	19		OAK	FAIR	REMOVED	YES
392	9		OAK	FAIR	REMOVED	YES
393	24		ELM	FAIR	REMOVED	YES
394	17		HACKBERRY	FAIR	REMOVED	YES
395	25		HACKBERRY	FAIR	REMOVED	YES
396		7	CEDAR	FAIR	REMOVED	NO
397		9	CEDAR	FAIR	REMOVED	NO
398		7	CEDAR	FAIR	REMOVED	NO
399		8	HACKBERRY	FAIR	REMOVED	NO
400	12		HACKBERRY	FAIR	REMOVED	YES
401		7	HACKBERRY	FAIR	REMOVED	NO
402		9	HACKBERRY	FAIR	REMOVED	NO
403		8	CEDAR	FAIR	REMOVED	NO
404		8	CEDAR	FAIR	REMOVED	NO
405		7	CEDAR	FAIR	REMOVED	NO
408		8	CEDAR	FAIR	REMOVED	NO
409		9	HACKBERRY	FAIR	REMOVED	NO
410		8	HACKBERRY	FAIR	REMOVED	NO
411		9	HACKBERRY	FAIR	REMOVED	NO
412		8	CEDAR	FAIR	REMOVED	NO
413		7	CEDAR	FAIR	REMOVED	NO
414		10	HACKBERRY	FAIR	REMOVED	NO
415		8	CEDAR	FAIR	REMOVED	NO
416		8	CEDAR	FAIR	REMOVED	NO
417		7	CEDAR	FAIR	REMOVED	NO
418		8	ELM	FAIR	REMOVED	NO
419		6	ELM	FAIR	REMOVED	NO
420		9	ELM	FAIR	REMOVED	NO
421	16		ELM	FAIR	REMOVED	YES
422		8	ELM	FAIR	REMOVED	NO
423	21		ELM (MULTI-TRUNK)	FAIR	REMOVED	YES
424		7	ELM	FAIR	REMOVED	NO
425		7	HACKBERRY	FAIR	REMOVED	NO
427		7	CEDAR	FAIR	REMOVED	NO
438	24		HACKBERRY	FAIR	REMOVED	YES

Total Inches Removed: 1080
Total Unprotected: 556
Total Protected: 313

Only 50% of removed inches for Hackberries and Cedar Trees are Counted.

REPLACEMENT TREES SUMMARY	
TOTAL PROTECTED INCHES REMOVED	407
MINIMUM NUMBER OF INCHES PROVIDED WITH GIDEON GROVE DEVELOPMENT (2-3 INCH TREES PER LOT)	426
INCHES REQUIRING MITIGATION	0

REV.	BY	DATE	DESCRIPTION

BENCHMARKS

CITY OF ROCKWALL MONUMENT "COR-2"
ALUMINUM DISK STAMPED "CITY OF ROCKWALL SURVEY MONUMENT" +/- .866'
EAST OF INTERSECTION OF WILLIAMS STREET AND CARUTH LANE, AND 50' SOUTH
OF CL OF WILLIAMS STREET. N: 7029731.124, E: 2598589.314, ELEV=529.10

CITY OF ROCKWALL MONUMENT "COR-4"
ALUMINUM DISK STAMPED "CITY OF ROCKWALL SURVEY MONUMENT" ON NORTH SIDE
OF DALTON ROAD +/- 210' WEST OF INTERSECTION OF SH 205 AND DALTON ROAD,
AND 10' NORTH OF CURB LINE. N: 7040336.992, E: 2592422.633, ELEV=541.67

TREE MITIGATION PLAN

GIDEON GROVE - NORTH

CITY OF ROCKWALL, ROCKWALL COUNTY, TEXAS

MACATEE ENGINEERING
DAYTON MACATEE ENGINEERING, LLC
(Tex. Reg. No. F-456)
3519 MILES STREET
DALLAS, TEXAS 75209
TEL 214-373-1180 * FAX 214-373-6580
E-MAIL: daytonm@macatee-engineering.com

DESIGNED	CHECKED	DATE	DWG FILE	PROJECT #	SHEET NO.
		07/19/2018	G6_TS	SKR_GG	5 OF 5