




SP2016-034- LIDL  
 SITE PLAN - LOCATION MAP = 



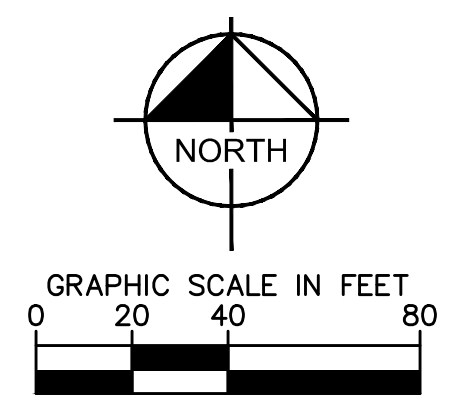
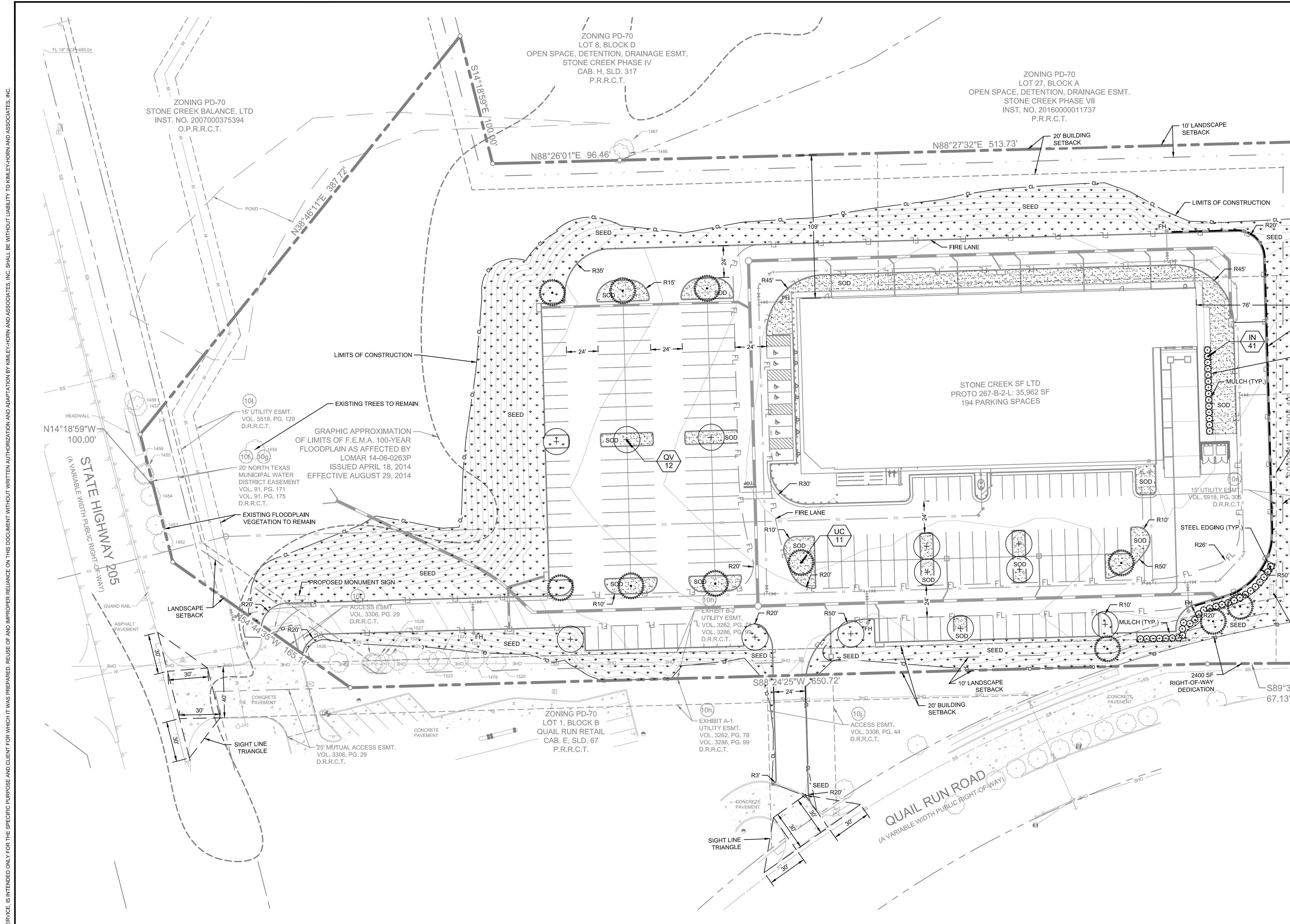
# City of Rockwall

Planning & Zoning Department  
 385 S. Goliad Street  
 Rockwall, Texas 75032  
 (P): (972) 771-7745  
 (W): [www.rockwall.com](http://www.rockwall.com)

The City of Rockwall GIS maps are continually under development and therefore subject to change without notice. While we endeavor to provide timely and accurate information, we make no guarantees. The City of Rockwall makes no warranty, express or implied, including warranties of merchantability and fitness for a particular purpose. Use of the information is the sole responsibility of the user.





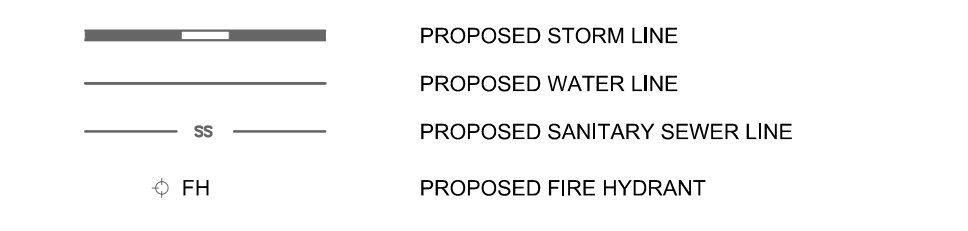


- ### PLANTING NOTES
- ALL PLANT MATERIAL SHALL BE INSTALLED ACCORDING TO SOUND NURSERY PRACTICES AND SHALL MEET ALL STANDARDS AS STATED IN THE LATEST EDITION OF "AMERICAN STANDARD FOR NURSERY STOCK" BY THE AMERICAN ASSOCIATION OF NURSERYMEN.
  - NO SUBSTITUTIONS IN PLANT MATERIALS SHALL BE MADE WITHOUT WRITTEN AUTHORIZATION FROM OWNER OR LANDSCAPE ARCHITECT. IN THE EVENT OF DISCREPANCIES BETWEEN THE DRAWING AND THE PLANT LIST, THE DRAWING SHALL PREVAIL.
  - LOCATE ALL UTILITIES PRIOR TO ANY DIGGING OPERATIONS. CONTRACTOR SHALL BE RESPONSIBLE FOR ALL DAMAGES TO EXISTING UTILITIES INCURRED BY HIS WORK.
  - REFERENCE IRRIGATION PLAN FOR BED IRRIGATION INFORMATION.
  - STAKING AND GUYING ALTERNATIVES: METHODS INDICATED IN DRAWING DETAILS ARE PREFERRED. CONTRACTOR MAY SUGGEST ALTERNATE METHODS, ASSUMING FULL RESPONSIBILITY FOR THEIR IMPLEMENTATION. CONTRACTOR SHALL REPLACE, PLANT, OR UPRIGHT ANY TREES BLOWN OVER OR DAMAGED DUE TO INADEQUATE STAKING AT NO ADDITIONAL COST TO THE OWNER.
  - PLANTS MASSES IN BEDS SHALL BE ARRANGED USING TRIANGULAR SPACING.
  - PROVIDE A STEEL EDGE OR CONCRETE MOW STRIP BETWEEN ALL PLANTING BEDS AND LAWN AREAS. REFERENCE SITE PLAN.
  - ALL PLANTING BEDS TO BE TOP DRESSED WITH A MINIMUM OF 3" SHREDED HARDWOOD MULCH.
  - PROVIDE GRASS SEEDING OR LAY BERMUDA SOD FOR PROPOSED LAWN AREAS TO ALL EDGES OF PAVEMENT AND/OR LIMITS OF DISTURBANCE OUTSIDE R.O.W. OR PROPOSED LANDSCAPE EASEMENT.
  - THE CONTRACTOR SHALL BE RESPONSIBLE FOR THE MAINTENANCE OF ALL LANDSCAPING UNTIL FINAL ACCEPTANCE. ALL REQUIRED LANDSCAPING SHALL BE MAINTAINED IN A NEAT AND ORDERLY MANNER AT ALL TIMES. THE WORK SHALL INCLUDE, BUT NOT BE LIMITED TO, MOWING, EDGING, PRUNING, FERTILIZING, WATERING, WEEDING, AND OTHER SUCH ACTIVITIES COMMON TO THE MAINTENANCE OF LANDSCAPING. ALL PLANT MATERIALS SHALL BE MAINTAINED IN A HEALTHY AND GROWING CONDITION AS IS APPROPRIATE FOR THE SEASON OF THE YEAR. PLANT MATERIAL THAT DIES SHALL BE REPLACED WITH THE PLANT MATERIAL OF SIMILAR SIZE AND VARIETY.
  - CONTRACTOR SHALL WARRANTY PLANT MATERIAL TO REMAIN ALIVE AND HEALTHY FOR A PERIOD OF ONE YEAR AFTER FINAL ACCEPTANCE. WARRANTY SHALL NOT INCLUDE DAMAGE FOR LOSS OF PLANT MATERIAL DUE TO NATURAL CAUSES, ACTS OF VANDALISM OR NEGLIGENCE ON THE PART OF THE OWNER.
  - ALL DISTURBED AREAS WITHIN LIMITS OF CONSTRUCTION NOT CALLED TO BE SODDED, SHALL BE REESTABLISHED WITH BERMUDA SOD.
  - ALL LANDSCAPE BED AREAS TO BE PREPARED USING "READY TO PLANT BEDDING MIX" BY SOIL BUILDING SOLUTIONS (OR APPROVED EQUAL). INSTALL TO DEPTHS, PER PLANTING DETAILS (12" DEPTH MIN.). FINISHED GRADES OF PLANTING BEDS TO BE 2" BELOW FINISHED GRADE OF ADJACENT PAVING OR AS SHOWN ON GRADING PLAN.
  - ALL SOD AREAS TO RECEIVE 4" DEPTH (MIN) TOPSOIL PRIOR TO INSTALLATION. ALL PLANTING AREAS TO RECEIVE 24" DEPTH (MIN) OF TOPSOIL. TOPSOIL SHALL BE NATURAL, FRUITABLE, FERTILE, pH RANGE OF 6.0-6.5, AND FREE OF TRASH, DEBRIS, STONES, WEEDS, AND TWIGGS/BRANCHES.
- NOTE: PLANT QUANTITIES ARE PROVIDED FOR CONVENIENCE ONLY. IN THE CASE OF A DISCREPANCY, THE DRAWING SHALL TAKE PRECEDENCE.
- NOTE: PLANTS ARE SPECIFIED BY HEIGHT AND SPREAD, NOT CONTAINER SIZE. ALL PLANTINGS ARE EXPECTED TO MEET ALL SPECIFICATIONS PROVIDED.
- NOTE: IRRIGATION WILL MEET REQUIREMENTS OF UDC.

### PLANT SCHEDULE

TREES	CODE	QTY	BOTANICAL NAME / COMMON NAME	SPECIFICATIONS	REMARKS
	IN	41	Ilex x 'Nellie R Stevens' / Nellie R Stevens Holly	8' ht. 4' spr.	Full to Base, Straight
	QV	12	Quercus virginiana / Southern Live Oak	3" cal, 12' ht x 4' spr	Full, Single Leader, Straight
	UC	11	Ulmus crassifolia / Cedar Elm	3" cal, 12' ht x 4' spr	Full, Single Leader, Straight
MISC	CODE	QTY	BOTANICAL NAME / COMMON NAME	SPECIFICATIONS	REMARKS
	SOD	TBD	Cynodon dactylon / Common Bermuda	Solid, rolled tight with sand filled joints, 100% weed/ disease/ pest free	
	SEED	TBD	Cynodon dactylon / Common Bermuda	Hydromulch application, see landscape specifications	
	MULCH	TBD	Shredded Hardwood Mulch	3" depth min, all trees in sod to receive 4" diameter mulch ring	

### LEGEND



### SITE DATA TABLE

ZONING	PD-070-N-SH 205 OVERLAY GR (GENERAL RETAIL)
PROPOSED USE	GENERAL RETAIL
LOT AREA (SF AND AC)	324,797 SF / 7.46 AC
OVERALL AREA (SF AND AC)	324,797 SF / 7.46 AC
BUILDING AREA	35,962 SF
BUILDING HEIGHT	35'-0" (1-STORY)
LOT COVERAGE	11.10%
FLOOR AREA RATIO	.11
TOTAL PARKING REQUIRED	144 SPACES (1 PER 250 SF AREA)
TOTAL PARKING PROVIDED	194 SPACES
TOTAL HANDICAP REQUIRED*	6 SPACES (1 VAN)
TOTAL HANDICAP PROVIDED*	6 SPACES (1 VAN)

\*HANDICAP IS PROVIDED IN ACCORDANCE WITH ADA STANDARDS

### CITY OF ROCKWALL LANDSCAPE REQUIREMENTS

MINIMUM LANDSCAPE REQUIREMENTS	REQUIRED	PROPOSED
<b>LANDSCAPING REQUIRED</b> 324,797 SQ FT TOTAL SITE AREA X 15% = 48,720 SQ FT	48,720 SQ FT	163,179 SQ FT
<b>FRONT YARD REQUIREMENT PER GR ZONING DISTRICT</b> 50% OF REQUIRED LANDSCAPE MUST BE LOCATED IN FRONT YARD FROM FACE OF BUILDING TO PROPERTY LINE	24,360 SQ FT	27,004 SQ FT
<b>STREET TREE REQUIREMENTS</b> 1 LARGE CANOPY TREE SHALL BE PLANTED PER 50 LF OF STREET FRONTAGE	3	3
<b>QUAIL RUN ROAD</b> 143 LF / 50 LF = 3 TREES		
<b>STATE HIGHWAY 205 OVERLAY</b> 183 LF 20' WIDE BUFFER STRIP MIN. 183 LF / 100 LF = 2 CANOPY TREES = 4 (4" INCH) CANOPY TREES =	BERM/ OR SHRUB PLANTING	EX TREES
183 LF / 100 LF = 4 ACCENT TREES = 8 ACCENT TREES, 4' HEIGHT MIN.		EX TREES
<b>PARKING LOT REQUIREMENTS</b> THERE SHALL BE A MINIMUM OF 1 TREE PER EVERY 10 PARKING SPACES WITHIN A PARKING LOT WITH MORE THAN 20,000 SQ FT	20	20
194 SPACES / 10 = 20 TREES		
<b>INTERIOR LANDSCAPE REQUIREMENT</b> 5% OF THE TOTAL PARKING LOT SHALL BE LANDSCAPE 83,804 SQ FT PARKING LOT/ 5% = 4,191 SQ FT	4,191 SQ FT	6,206 SQ FT
<b>LOADING DOCK BUFFER</b> SCREENING REQUIRED FROM ALL PUBLIC STREETS AND RESIDENTIAL DISTRICTS	YES	YES

NOTES:  
MINIMUM LARGE TREE CALIPER MUST BE 3" OR LARGER  
SH 205 CANOPY TREES REQUIRE 4" CALIPER  
SH 205 ACCENT TREES REQUIRE 4" HEIGHT  
SH 205 SHRUBS REQUIRED DECIDUOUS: 15", 2-GALLON MIN.  
SH 205 SHRUBS REQUIRED EVERGREEN: 12", 2-GALLON MIN.

NO.	REVISIONS	DATE	BY

**Kimley»Horn**

12750 MERIT DRIVE, SUITE 1000, DALLAS, TEXAS  
PHONE: 972-770-1300 FAX: 972-259-3820  
TEXAS REGISTERED ENGINEERING FIRM E-528

FOR REVIEW ONLY  
Not for construction or permit purposes.

**Kimley»Horn**

P.L.A. SENDEL, PORTER  
L.A. No. 3139 Date DECEMBER 2016

PROJECT NO:	064500141
DATE:	DECEMBER 2016
SCALE:	AS SHOWN
DESIGNED BY:	TJN
DRAWN BY:	TJN
CHECKED BY:	KLP

**RETAIL**

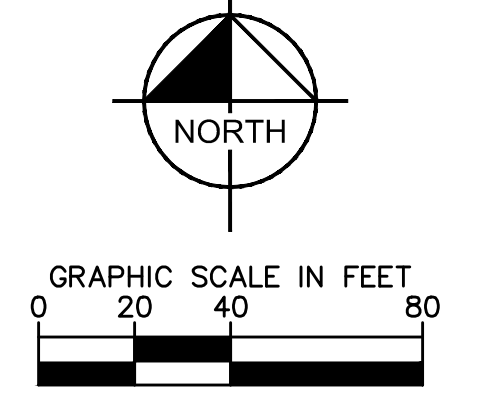
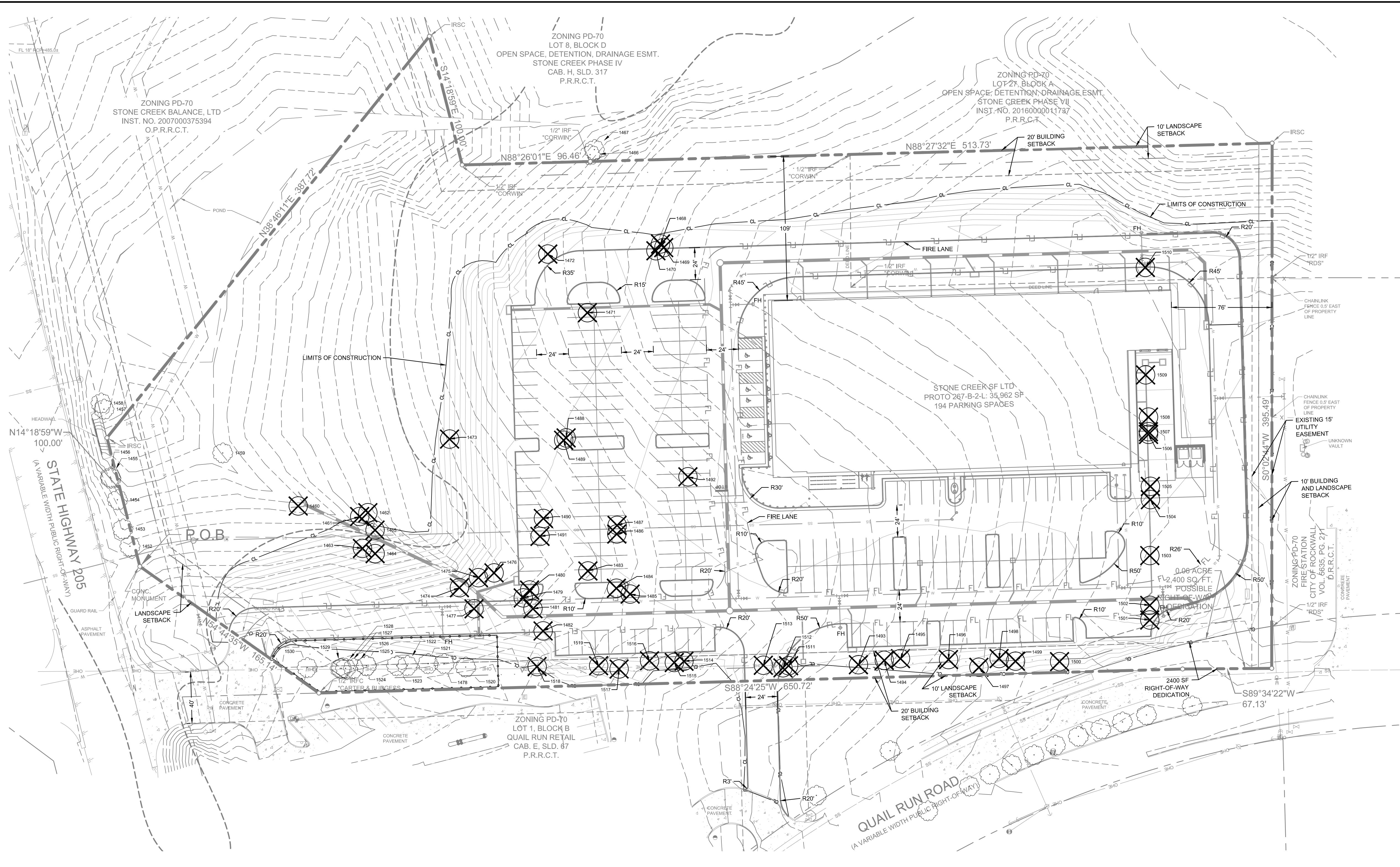
NWC OF SH 205 AND QUAIL RUN ROAD  
CITY OF ROCKWALL, TX

**LANDSCAPE PLAN**

SHEET NUMBER  
**LP 1.01**



IMAGES  
 XREF: 2/23/2016 - XREF: 5/20/2016 - XREF: 8/26/2016 - XREF: 11/11/2016 - XREF: 11/11/2016 - XREF: 11/11/2016  
 DWG NAME: K:\BTL\2016\20160153 - GROVER - ROCKWALL\DESIGN\00 PERMIT\CODE\PLANS\TREET.LT (1).DWG  
 LAST SAVED: 12/20/2016 5:07 PM  
 LAST SAVED: 12/20/2016 5:07 PM  
 LAST SAVED: 12/20/2016 5:07 PM  
 THIS DOCUMENT, TOGETHER WITH THE CONCEPTS AND DESIGNS PRESENTED HEREIN, IS AN INSTRUMENT OF SERVICE. IT IS INTENDED ONLY FOR THE SPECIFIC PURPOSE AND CLIENT FOR WHICH IT WAS PREPARED. REUSE OF AND IMPROPER RELIANCE ON THIS DOCUMENT WITHOUT WRITTEN AUTHORIZATION AND ADAPTATION BY KIMLEY-HORN AND ASSOCIATES, INC. SHALL BE WITHOUT LIABILITY TO KIMLEY-HORN AND ASSOCIATES, INC.



**LEGEND**

	TREE TO BE REMOVED
	TREE TO REMAIN
	TREE PROTECTION FENCE
	FLOODPLAIN LIMITS
	PROPOSED STORM LINE
	PROPOSED WATER LINE
	PROPOSED SANITARY SEWER LINE
	PROPOSED FIRE HYDRANT

NOTE:  
 ALL TREES ARE TO BE PROTECTED FROM DAMAGE. NO VEHICULAR PARKING, STORAGE OF MATERIALS OR EQUIPMENT, CLEANING OF EQUIPMENT, EQUIPMENT WASH OUT OR ANY OTHER ACTION WHICH MAY CAUSE AN ADVERSE AFFECT ON EXISTING OR FUTURE PLANTING IS TO OCCUR IN OR AROUND TREES IN LANDSCAPE AREAS WHICH MAY BE AFFECTED.

No.	REVISIONS	DATE	BY

**Kimley»Horn**

12750 MERIT DRIVE, SUITE 1000, DALLAS, TEXAS  
 PHONE: 972-770-1300 FAX: 972-239-3820  
 TEXAS REGISTERED ENGINEERING FIRM T-528

FOR REVIEW ONLY  
 Not for construction or permit purposes.

**Kimley»Horn**

P.L.A. SENSE L. FORSTER  
 L.A. No. 3138 Date DECEMBER 2016

PROJECT No. 064200141	DATE: DECEMBER 2016	SCALE: AS SHOWN	DESIGNED BY: TUN	TUN	CHECKED BY: KLP
--------------------------	---------------------	-----------------	------------------	-----	-----------------

**RETAIL**  
 NWC OF SH 205 AND QUAIL RUN ROAD  
 CITY OF ROCKWALL, TX

**TREESCAPE PLAN**

SHEET NUMBER  
**LT 1.01**

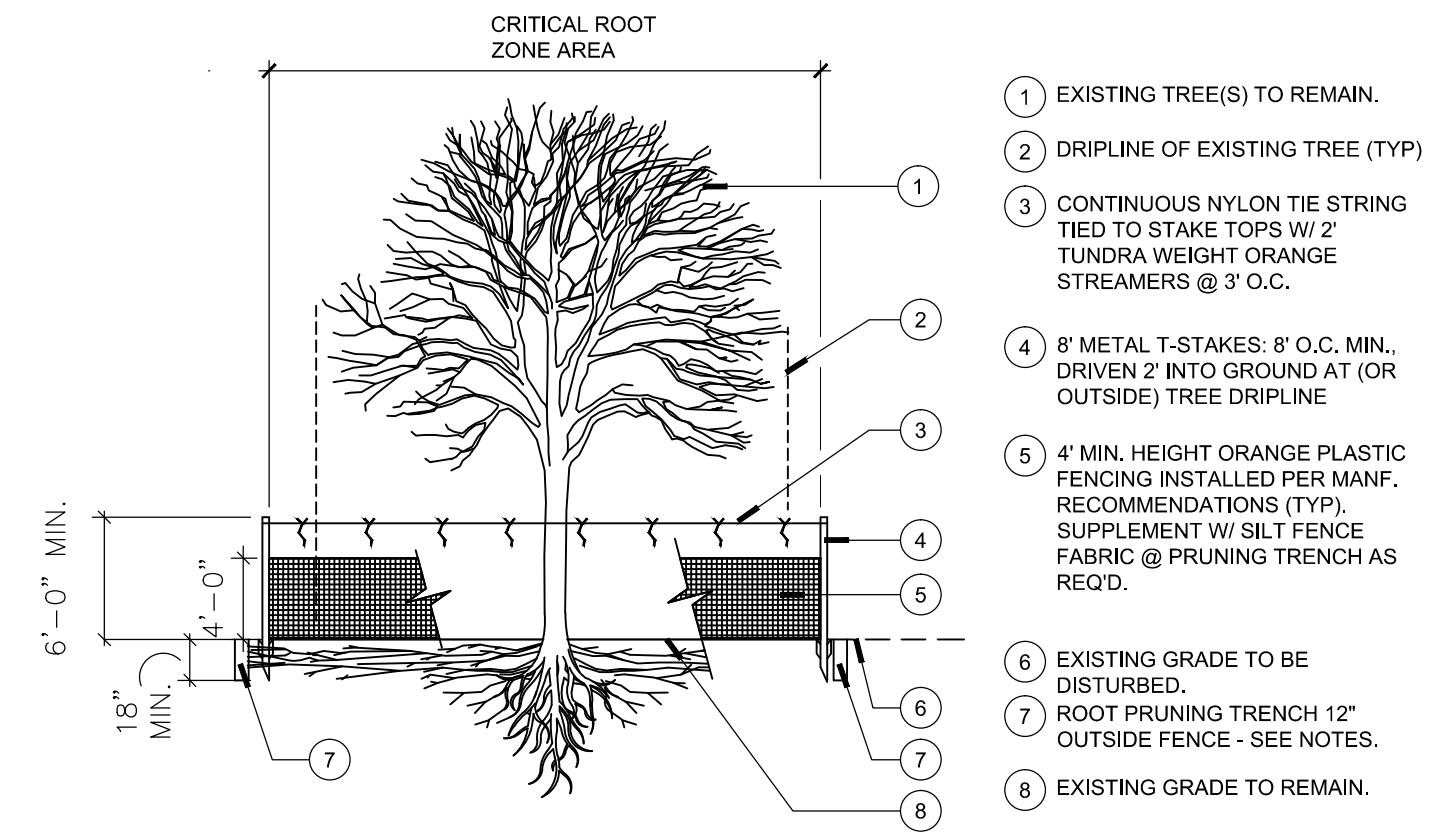
**SITE DATA TABLE**

ZONING	PD-070-N-SH 205 OVERLAY GR (GENERAL RETAIL)
PROPOSED USE	(GENERAL RETAIL)
LOT AREA (SF AND AC)	324,797 SF / 7.46 AC
OVERALL AREA (SF AND AC)	324,797 SF / 7.46 AC
BUILDING AREA	35,962 SF
BUILDING HEIGHT	35'-0" (1-STORY)
LOT COVERAGE	11.10%
FLOOR AREA RATIO	.11
TOTAL PARKING REQUIRED	144 SPACES (1 PER 250 SF AREA)
TOTAL PARKING PROVIDED	194 SPACES
TOTAL HANDICAP REQUIRED*	6 SPACES (1 VAN)
TOTAL HANDICAP PROVIDED*	6 SPACES (1 VAN)

\*HANDICAP IS PROVIDED IN ACCORDANCE WITH ADA STANDARDS

**TREE INVENTORY**

TAG#	DBH	COMMON NAME	SCIENTIFIC NAME	CONDITION	MULTIPLE-STEMMED	STATUS	MITIGATION INCHES
1452	11.4	hackberry	<i>Celtis laevigata</i>	Healthy	Single	Remain	0
1453	25.7	American elm	<i>Ulmus americana</i>	Declining	Forked	Remain	0
1454	19.5	American elm	<i>Ulmus americana</i>	Healthy	Single	Remain	0
1455	6.4	American elm	<i>Ulmus americana</i>	Healthy	Single	Remain	0
1456	18.9	American elm	<i>Ulmus americana</i>	Healthy	Single	Remain	0
1457	35.7	pecan	<i>Carya illinoensis</i>	Healthy	Forked	Remain	0
1458	16.8	pecan	<i>Carya illinoensis</i>	Declining	Single	Remain	0
1459	18.5	cedar elm	<i>Ulmus crassifolia</i>	Healthy	Single	Remain	0
1460	20.2	cedar elm	<i>Ulmus crassifolia</i>	Healthy	Single	Remove	20.2
1461	4.5	American elm	<i>Ulmus americana</i>	Healthy	Single	Remove	4.5
1462	4.0	cedar elm	<i>Ulmus crassifolia</i>	Healthy	Single	Remove	4
1463	4.1	cedar elm	<i>Ulmus crassifolia</i>	Healthy	Single	Remove	4.1
1464	5.2	cedar elm	<i>Ulmus crassifolia</i>	Healthy	Single	Remove	5.2
1465	5.5	cedar elm	<i>Ulmus crassifolia</i>	Healthy	Single	Remove	5.5
1466	17.5	eastern redcedar	<i>Juniperus virginiana</i>	Healthy	Single	Remain	0
1467	9.4	American elm	<i>Ulmus americana</i>	Healthy	Single	Remain	0
1468	5.0	Hercules-club	<i>Zanthoxylum clava-herculis</i>	Healthy	Single	Remove	5
1469	6.5	Hercules-club	<i>Zanthoxylum clava-herculis</i>	Healthy	Single	Remove	6.5
1470	6.0	Hercules-club	<i>Zanthoxylum clava-herculis</i>	Healthy	Multi	Remove	6
1471	7.5	Callery pear	<i>Pyrus calleryana</i>	Healthy	Multi	Remove	7.5
1472	15.0	hackberry	<i>Celtis laevigata</i>	Healthy	Single	Remove	7.5
1473	13.5	hackberry	<i>Celtis laevigata</i>	Healthy	Single	Remove	6.75
1474	4.7	Hercules-club	<i>Zanthoxylum clava-herculis</i>	Healthy	Single	Remove	4.7
1475	6.9	American elm	<i>Ulmus americana</i>	Healthy	Single	Remove	6.9
1476	5.4	American elm	<i>Ulmus americana</i>	Healthy	Single	Remove	5.4
1477	4.7	pecan	<i>Carya illinoensis</i>	Declining	Single	Remove	Exempt
1478	9.0	pecan	<i>Carya illinoensis</i>	Declining	Single	Remain	0
1479	6.5	cedar elm	<i>Ulmus crassifolia</i>	Healthy	Single	Remove	6.5
1480	5.3	cedar elm	<i>Ulmus crassifolia</i>	Healthy	Single	Remove	5.3
1481	4.1	cedar elm	<i>Ulmus crassifolia</i>	Healthy	Single	Remove	4.1
1482	8.5	pecan	<i>Carya illinoensis</i>	Declining	Single	Remove	Exempt
1483	14.4	hackberry	<i>Celtis laevigata</i>	Healthy	Single	Remove	7.2
1484	5.0	American elm	<i>Ulmus americana</i>	Healthy	Single	Remove	5
1485	4.5	cedar elm	<i>Ulmus crassifolia</i>	Healthy	Single	Remove	4.5
1486	5.9	Hercules-club	<i>Zanthoxylum clava-herculis</i>	Declining	Single	Remove	Exempt
1487	4.5	Hercules-club	<i>Zanthoxylum clava-herculis</i>	Declining	Single	Remove	Exempt
1488	11.6	hackberry	<i>Celtis laevigata</i>	Healthy	Single	Remove	5.8
1489	12.6	hackberry	<i>Celtis laevigata</i>	Healthy	Single	Remove	6.3
1490	4.1	cedar elm	<i>Ulmus crassifolia</i>	Healthy	Single	Remove	4.1
1491	6.9	American elm	<i>Ulmus americana</i>	Healthy	Single	Remove	6.9
1492	11.1	hackberry	<i>Celtis laevigata</i>	Healthy	Single	Remove	5.6
1493	13.7	hackberry	<i>Celtis laevigata</i>	Hazard	Single	Remove	Exempt
1494	13.9	hackberry	<i>Celtis laevigata</i>	Healthy	Single	Remove	6.95
1495	14.4	hackberry	<i>Celtis laevigata</i>	Healthy	Single	Remove	7.2
1496	8.1	Hercules-club	<i>Zanthoxylum clava-herculis</i>	Healthy	Single	Remove	8.1
1497	23.7	hackberry	<i>Celtis laevigata</i>	Healthy	Multi	Remove	11.85
1498	12.6	hackberry	<i>Celtis laevigata</i>	Healthy	Single	Remove	6.3
1499	14.7	hackberry	<i>Celtis laevigata</i>	Healthy	Single	Remove	7.35
1500	8.7	cedar elm	<i>Ulmus crassifolia</i>	Healthy	Single	Remove	8.7
1501	37.0	hackberry	<i>Celtis laevigata</i>	Healthy	Multi	Remove	18.5
1502	29.5	hackberry	<i>Celtis laevigata</i>	Healthy	Single	Remove	14.75
1503	15.0	hackberry	<i>Celtis laevigata</i>	Healthy	Single	Remove	7.5
1504	30.5	hackberry	<i>Celtis laevigata</i>	Declining	Single	Remove	Exempt
1505	21.0	cedar elm	<i>Ulmus crassifolia</i>	Healthy	Single	Remove	21
1506	31.7	cedar elm	<i>Ulmus crassifolia</i>	Declining	Forked	Remove	Exempt
1507	17.1	hackberry	<i>Celtis laevigata</i>	Healthy	Single	Remove	8.6
1508	30.0	hackberry	<i>Celtis laevigata</i>	Hazard	Forked	Remove	Exempt
1509	13.2	hackberry	<i>Celtis laevigata</i>	Healthy	Single	Remove	6.6
1510	39.6	hackberry	<i>Celtis laevigata</i>	Declining	Forked	Remove	Exempt
1511	19.4	hackberry	<i>Celtis laevigata</i>	Healthy	Single	Remove	9.7
1512	23.5	hackberry	<i>Celtis laevigata</i>	Healthy	Forked	Remove	11.8
1513	17.2	hackberry	<i>Celtis laevigata</i>	Healthy	Single	Remove	8.6
1514	15.4	hackberry	<i>Celtis laevigata</i>	Healthy	Single	Remove	7.7
1515	5.4	American elm	<i>Ulmus americana</i>	Healthy	Single	Remove	5.4
1516	13.8	hackberry	<i>Celtis laevigata</i>	Healthy	Single	Remove	6.9
1517	7.2	cedar elm	<i>Ulmus crassifolia</i>	Healthy	Single	Remove	7.2
1518	12.2	hackberry	<i>Celtis laevigata</i>	Healthy	Single	Remove	6.1
1519	35.2	cedar elm	<i>Ulmus crassifolia</i>	Healthy	Forked	Remove	70.4
1520	14.0	hackberry	<i>Celtis laevigata</i>	Healthy	Single	Remain	0
1521	14.4	hackberry	<i>Celtis laevigata</i>	Healthy	Single	Remain	0
1522	11.9	hackberry	<i>Celtis laevigata</i>	Healthy	Single	Remain	0
1523	13.3	cedar elm	<i>Ulmus crassifolia</i>	Healthy	Single	Remain	0
1524	17.5	hackberry	<i>Celtis laevigata</i>	Healthy	Single	Remain	0
1525	14.0	hackberry	<i>Celtis laevigata</i>	Healthy	Single	Remain	0
1526	8.5	cedar elm	<i>Ulmus crassifolia</i>	Healthy	Single	Remain	0
1527	10.0	cedar elm	<i>Ulmus crassifolia</i>	Healthy	Single	Remain	0
1528	4.4	cedar elm	<i>Ulmus crassifolia</i>	Healthy	Single	Remain	0
1529	7.7	cedar elm	<i>Ulmus crassifolia</i>	Healthy	Single	Remain	0
1530	18.9	cedar elm	<i>Ulmus crassifolia</i>	Healthy	Single	Remain	0
						<b>TOTAL MITIGATION INCHES:</b>	<b>428.25</b>



- NOTES:
- PERFORM ROOT PRUNING ON ALL EXISTING TREES TO REMAIN WHERE CONSTRUCTION ACTIVITY FALLS WITHIN DRIP LINE OF EXISTING TREES.
  - ROOT PRUNING METHOD- 2 MONTHS MIN. PRIOR TO EXCAVATION & CONSTRUCTION ACTIVITIES. HAND OUT ROOTS BY DIGGING A 18"-24" DEEP x 8" WIDE TRENCH ALONG THE OUTSIDE PERIMETER OF EXISTING TREE(S) ADJACENT TO CONSTRUCTION AREAS. MAXIMIZE PRUNING TRENCH DISTANCE FROM TRUNK TO THE FULLEST EXTENT POSSIBLE, W/ THE ROOT PRUNING LINE PLACED @ THE EDGE OF CONSTRUCTION LIMITS.

**TREE PROTECTION DETAIL**

NOTE: TREE PROTECTION TO BE USED AS NECESSARY TO PRESERVE ALL TREES FROM ADJACENT EXISTING BUILDING.

**TREE PRESERVATION/ REMOVAL NOTES:**

- CONTRACTOR SHALL COORDINATE WITH ISA CERTIFIED ARBORIST AND PROPERTY OWNERS TO VERIFY OBJECTIVES PRIOR TO COMMENCING ANY PRUNING OR TREE REMOVAL ACTIVITIES.
- ALL CREW MEMBERS SHOULD BE WEARING THE APPROPRIATE SAFETY GEAR: HARD HATS, EYE PROTECTION, APPROVED BOOTS, HEARING PROTECTION, CHAIN SAW CHAPS FOR GROUNDWORK.
- ANY TREES REMOVED, AND ALL TREE MATERIALS REMOVED SHALL BE REMOVED FROM THE PROPERTY AT THE CONTRACTOR'S EXPENSE.
- ALL TRASH AND DEBRIS FROM ANY CONSTRUCTION RELATED ACTIVITIES SHALL BE REMOVED FROM THE SITE AT THE CONTRACTOR'S EXPENSE, FOLLOWING COMPLETION OF THE PROJECT.
- ANY DAMAGE TO THE EXISTING LANDSCAPE, PAVEMENT, BUILDING, OR ANY OTHER SITE FEATURES SHALL BE REPLACED BY THE CONTRACTOR AND/OR RESTORED TO PRE-CONSTRUCTION CONDITION.
- CONTRACTOR SHALL PROVIDE REMOVAL, STORAGE, AND TRANSPLANTING OF 4 EXISTING TREES ON SITE. THE CONTRACTOR SHALL REMOVE EACH EXISTING TREE THROUGH THE USE OF HAND DIGGING, OR WITH THE USE OF AN APPROVED MECHANICAL DEVICE. TREES SHALL BE HARVESTED AS BALLED & BURLAPPED TREE SPECIMENS, PER ANSI Z60 STANDARDS, AND TRANSPORTED TO NEW LOCATION ON SITE, OR AT ALTERNATE SITE AS DIRECTED OR APPROVED BY THE OWNER. CONTRACTOR SHALL PROVIDE ALL LABOR AND MATERIALS NECESSARY TO PROVIDE FOR REMOVAL, PLACEMENT OF BURLAP, PLACEMENT OF WIRE BASKET OR OTHER APPROVED BALL-SUPPORTING DEVICE, TRANSPORT TO TEMPORARY STORAGE AREA, ONGOING MAINTENANCE AND WATERING DURING CONSTRUCTION, AND RE-PLANTING TO BE PERFORMED UPON COMPLETION OF MAJOR SITE WORK. ALL WORK SHALL BE PERFORMED IN ACCORDANCE WITH THE GUIDELINES AND RECOMMENDATIONS SET FORTH IN THE AMERICAN STANDARDS FOR NURSERY STOCK.

**TREE REPLACEMENT NOTES:**

- PROTECTED TREE(S) MEASURING FOUR INCHES THROUGH 29 INCHES DBH SHALL BE REPLACED WITH CALIPER INCHES EQUAL TO THE TOTAL DIAMETERS OF THE TREE(S) REMOVED, EXCEPT AS SHOWN IN ITEM 6 BELOW.
- PROTECTED FEATURE TREE(S) (30 INCHES DBH AND LARGER) IF APPROVED FOR REMOVAL WILL BE REPLACED WITH TWICE THE NUMBER OF INCHES AS THE TREE(S) REMOVED.
- THE REPLACEMENT TREE MUST BE MAINTAINED IN A HEALTHY GROWING CONDITION FOR A MINIMUM OF TWO YEARS AFTER PLANTING.
- A REPLACEMENT TREE SHALL NOT BE PLANTED WITHIN AN AREA SUCH THAT THE MATURE ROOT ZONE WILL INTERFERE WITH UNDERGROUND PUBLIC UTILITY LINES, AND/OR WHERE THE MATURE CANOPY OF THE TREE WILL INTERFERE WITH OVERHEAD UTILITY LINES.
- NO TREE SHALL BE PLANTED WITHIN FIVE FEET OF A FIRE HYDRANT, WATER OR SEWER LINE.
- HACKBERRY AND CEDAR TREES THAT ARE 11 INCHES DBH OR LARGER, SHALL BE REPLACED AT 50 PERCENT OF THE TOTAL CALIPER INCHES BEING REMOVED, PROTECTED OR FEATURE TREES SHALL NOT INCLUDE THE FOLLOWING SPECIES: BOIS D'ARC, WILLOW, COTTONWOOD, LOCUST AND CHINABERRY. IN ADDITION, HACKBERRY AND CEDAR TREES THAT ARE LESS THAN 11 INCHES DBH SHALL NOT BE CONSIDERED A PROTECTED TREE.

**Kimley»Horn**  
 12750 MERIT DRIVE, SUITE 1000, DALLAS, TEXAS  
 PHONE: 972-770-1300 FAX: 972-259-3920  
 TEXAS REGISTERED ENGINEERING FIRM F-528

FOR REVIEW ONLY  
 Not for construction or permit purposes.  
**Kimley»Horn**  
 P.L.A. SENSEL, PORTER  
 L.A. No. 3139 Date DECEMBER 2016

PROJECT No:	064500141
DATE:	DECEMBER 2016
SCALE:	AS SHOWN
DESIGNED BY:	TJN
DRAWN BY:	TJN
CHECKED BY:	KLP

**RETAIL**  
 NWC OF SH 205 AND QUAIL RUN ROAD  
 CITY OF ROCKWALL, TX

**TREESCAPE DETAILS**

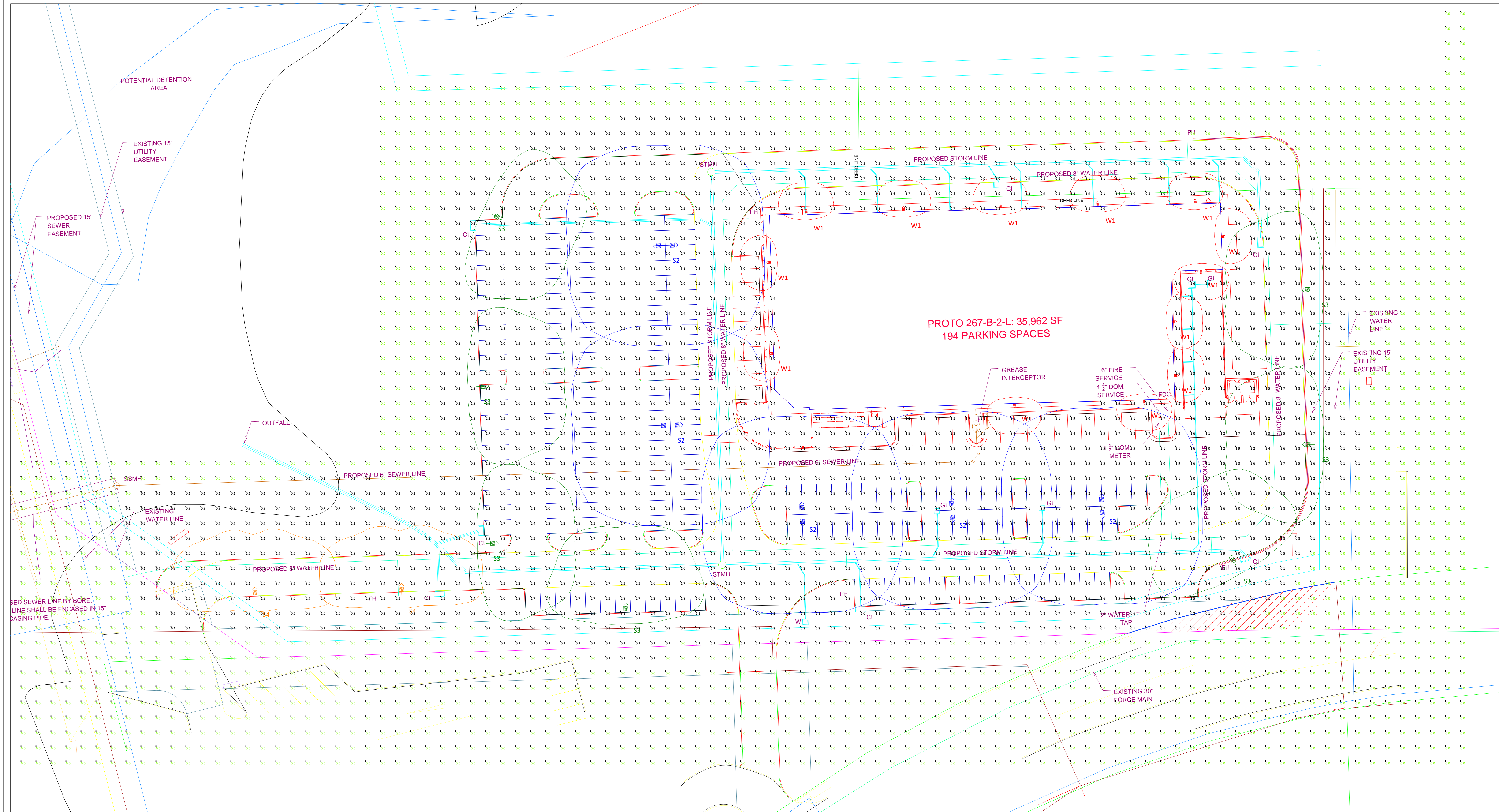
SHEET NUMBER  
**LT 2.01**

IMAGES XREF: 2/26/16 12:28:06 PM  
 XREFS: 2/26/16 12:28:06 PM  
 DWG NAME: K:\BTL\LA06450015-GROVER-ROCKWALL\DESIGN\00 PERMIT\CODE\PLANSHEET\LT 2.01.DWG  
 LAST SAVED: 2/26/16 12:28:06 PM  
 LAST SAVED: 2/26/16 12:28:06 PM  
 THIS DOCUMENT, TOGETHER WITH THE CONCEPTS AND DESIGNS PRESENTED HEREIN, AS AN INSTRUMENT OF SERVICE, IS INTENDED ONLY FOR THE SPECIFIC PURPOSE AND CLIENT FOR WHICH IT WAS PREPARED. REUSE OF AND IMPROPER RELIANCE ON THIS DOCUMENT WITHOUT WRITTEN AUTHORIZATION AND ADAPTATION BY KIMLEY-HORN AND ASSOCIATES, INC. SHALL BE WITHOUT LIABILITY TO KIMLEY-HORN AND ASSOCIATES, INC.

PHILIPS Luminaire Schedule									
Symbol	Qty	Label	Arrangement	Manufacturer	Description	LLF	Lum. Lumens	Lum. Watts	BUG Rating
	5	S2	BACK-BACK	PHILIPS GARDCO	ECF-2-5-215LA-641A-NW @ 25'	0.850	20874	210.3	B5-U0-G3
	7	S3	SINGLE	PHILIPS GARDCO	ECF-1-4-215LA-641A-NW-IS @ 25'	0.850	15431	211.7	B2-U0-G3
	2	S4	SINGLE	PHILIPS GARDCO	ECF-1-3-215LA-641A-NW-IS @ 25'	0.850	16032	210.9	B2-U0-G3
	13	W1	WALL MOUNT	PHILIPS GARDCO	121-16L-700-NW-G3-3 @ 14'	0.850	3421	38.4	B1-U0-G1

Calculation Summary										
Label	Avg	Max	Min	Avg/Min	Max/Min	Units	CalcType	PtSpcLr	PtSpcTb	Rev. Date
FULL SITE	0.84	4.1	0.0	N.A.	N.A.	Fc	Illuminance	10	10	.....
PARKING LOT	2.44	4.1	1.0	2.44	4.10	Fc	Illuminance			

- NOTE(S):
- ALL VALUES SHOWN ARE HORIZONTAL MAINTAINED FOOTCANDLES AT GRADE
  - FIXTURE DISTRIBUTION TEMPLATES ARE SHOWN AT 1.0 FC FOR REFERENCE USE ONLY
  - VALUES DO NOT INCLUDE CONTRIBUTION FROM ADJACENT STREET OR PROPERTY LIGHTING



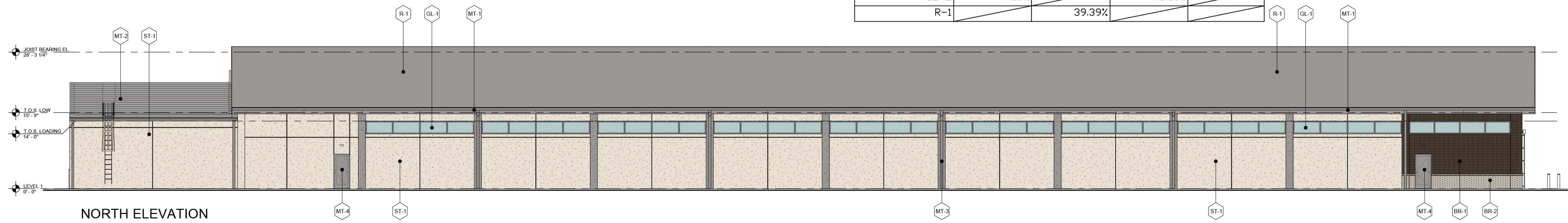
Scale: 1 inch= 30 Ft.

Project #:	9004-13914	Project:	Lidl US #1244
Created By:	B. Kozlowski	Location:	Rockwell, TX
Revision #:		Agent:	Tim Wanecky
Date:	12/7/2016	Site:	Sarah Beth White
Page #:	Page 1 of 1	Disclaimer:	Philips Lighting Inc. is not responsible for the accuracy of the information provided in this document. The user of this document is advised to verify all information and to consult with the appropriate authorities before using this information for any purpose. Philips Lighting Inc. is not responsible for any damages, including consequential damages, arising from the use of this information.
Size:	ARCH D	PHILIPS	PHILIPS

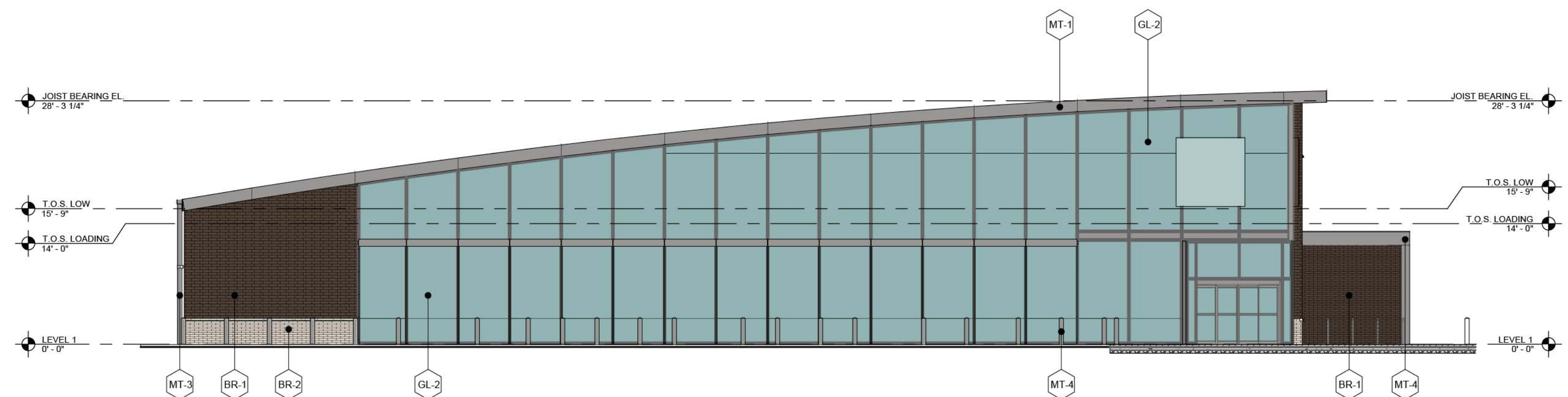
24"x 36"

MATERIAL PERCENTAGE CALCULATIONS				
	SOUTH	NORTH	WEST	EAST
TOTAL SURFACE AREA SQ.F.T	8,650 SQ. FT.	8,650 SQ. FT.	3,378 SQ. FT.	3,406 SQ. FT.
BR-1	21.11%	2.90%	13.20%	11.04%
BR-2	7.40%	0.80%	1.80%	
ST-1	36.06%	42.71%		75.06%
MT-1	4.60%	4.10%	5.30%	4.60%
MT-2	2.52%	2.60%		7.80%
MT-3				
MT-4	4.68%	0.60%	0.90%	1.50%
GL-1	16.13%	6.90%		
GL-2	7.50%		78.80%	
R-1		39.39%		

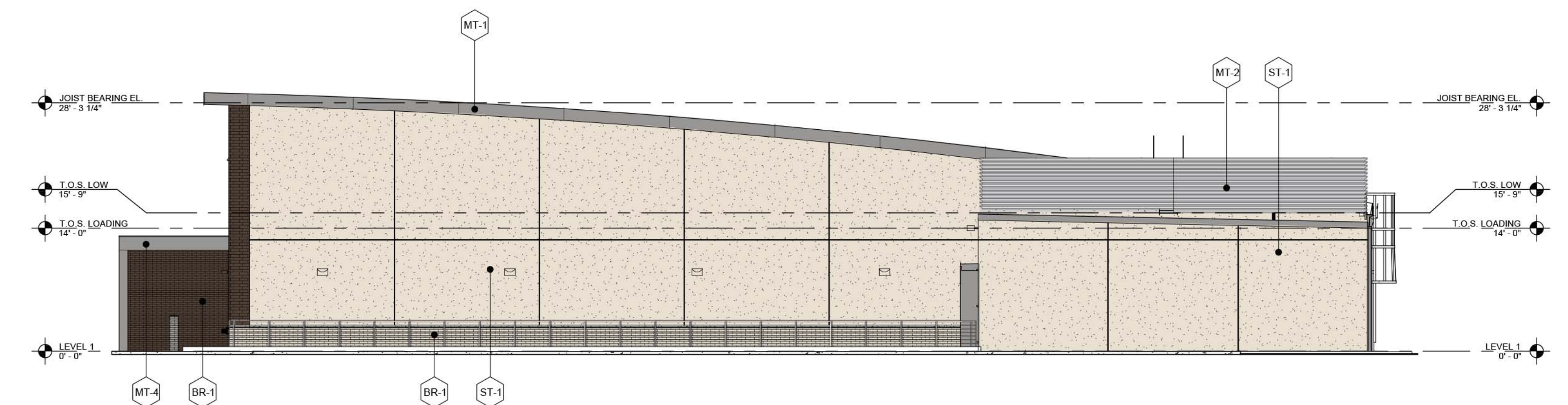
MATERIAL	DESCRIPTION
BR-1	BRICK TYPE A MANUFACTURER: ACME BRICK PRODUCT: BROWNWOOD MILL LOCATION: PRIMARY BRICK
BR-2	BRICK TYPE B MANUFACTURER: ACME BRICK PRODUCT: DOVE GRAY LOCATION: WAINSCOT
ST-1	STUCCO - 3 COAT SYSTEM MANUFACTURER: MEMBER OF TEXAS LATH & PLASTERING CONTRACTORS ASSOCIATION COLOR: SHERWIN WILLIAMS SW6141 / SOFTER TAN LOCATION: LOADING DOCK & ACCENT
MT-1	PREFINISHED METAL FASCIA MANUFACTURER: BERRIDGE PRODUCT: PREWEATHERED GALVALUME LOCATION: FASCIA & ACCENTS
MT-2	METAL LOUVERS MANUFACTURER: TBD COLOR: SHERWIN WILLIAMS SW7067 / CITYSCAPE LOCATION: REAR ELEVATION
MT-3	METAL GUTTER MANUFACTURER: TBD COLOR: SHERWIN WILLIAMS SW7067 / CITYSCAPE LOCATION: NEAR ELEVATION
MT-4	PAINTED STEEL CANOPY & MISC. MANUFACTURER: TBD COLOR: SHERWIN WILLIAMS SW7067 / CITYSCAPE LOCATION: GART RETURN / CANOPY
GL-1	ALUMINUM STOREFRONT & CURTAINWALL SYSTEMS MANUFACTURER: KAWNEER PRODUCT: CLEAR ANODIZED LOCATION: CLERESTORY / MAIN ENTRY
GL-2	GLASS MANUFACTURER: PPG PRODUCT: SOLARBAN 70XL, CLEAR LOCATION: STOREFRONT / CURTAINWALL
R-1	TPO ROOF MANUFACTURER: TBD COLOR: LIGHT GRAY LOCATION: ROOF



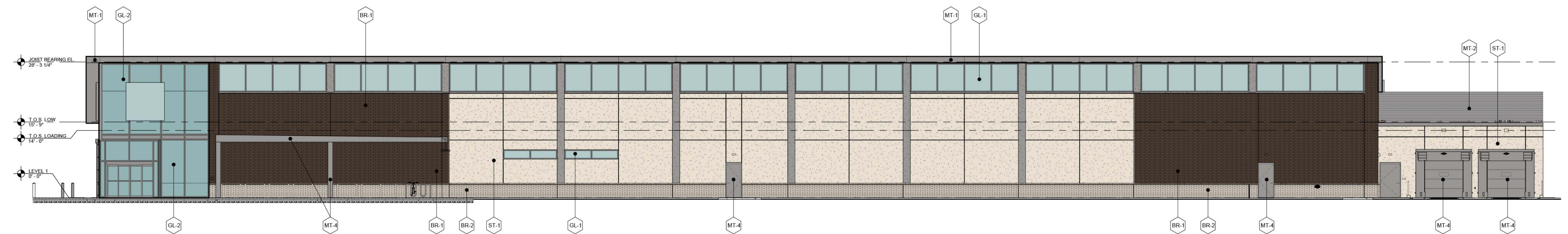
NORTH ELEVATION



WEST ELEVATION



EAST ELEVATION



SOUTH ELEVATION