


0 45 90 180 270 360 Feet

SP2016-030 - HARBOR URBAN CENTER CONDOMINIUMS  
SITE PLAN - LOCATION MAP = 



## City of Rockwall

Planning & Zoning Department  
385 S. Goliad Street  
Rockwall, Texas 75032  
(P): (972) 771-7745  
(W): [www.rockwall.com](http://www.rockwall.com)

The City of Rockwall GIS maps are continually under development and therefore subject to change without notice. While we endeavor to provide timely and accurate information, we make no guarantees. The City of Rockwall makes no warranty, express or implied, including warranties of merchantability and fitness for a particular purpose. Use of the information is the sole responsibility of the user.













DESIGNED BY	MS
DRAWN BY	EF
CHECKED BY	XXX
DATE	XXXXXX
PROJECT NAME	XXXXXX
CLIENT NAME	XXXXXX
PROJECT ADDRESS	XXXXXX
CITY	XXXXXX
STATE	XXXXXX
COUNTY	XXXXXX
ZIP	XXXXXX
SCALE	XXXXXX
DATE	XXXXXX
PROJECT NO.	XXXXXX
SHEET NO.	XXXXXX

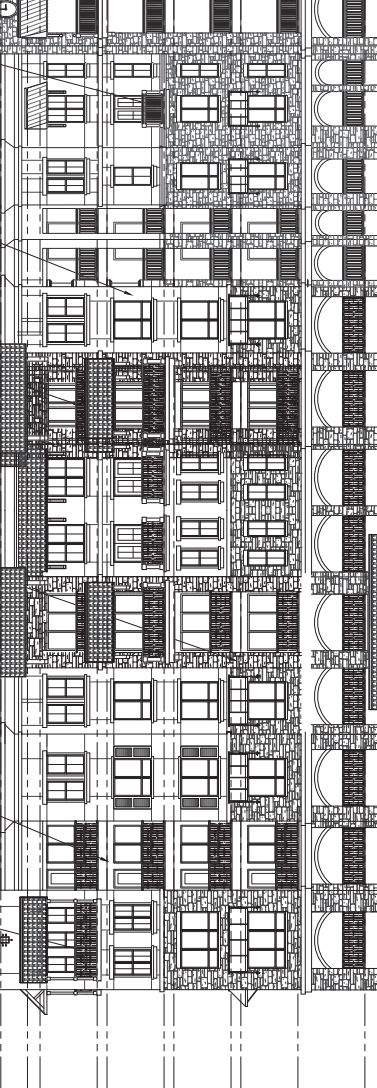
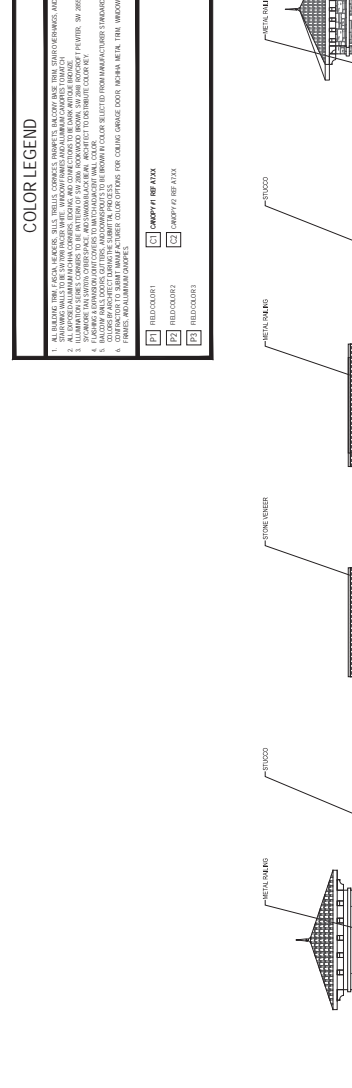
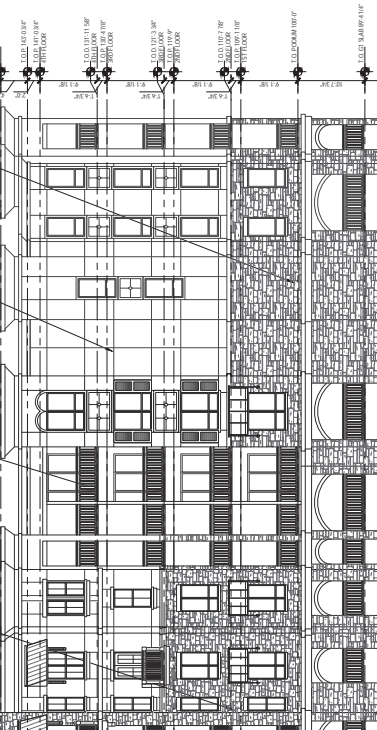
THESE DRAWINGS ARE PRELIMINARY AND NOT TO BE USED FOR CONSTRUCTION.

HUMPHREYS & PARTNERS  
 ARCHITECTS, L.P.  
 537 ALYON ROAD, SUITE 300, DALLAS, TEXAS 75240  
 (214) 761-1011 FAX: (214) 761-4239  
 WWW.HUMPHREYS.COM

DALLAS - OKLAHOMA - SCOTTSDALE - CHICAGO - DENVER - HOUSTON - LOS ANGELES - MIAMI - NEW YORK - PHOENIX - PORTLAND - SAN ANTONIO - TAMPA - WASHINGTON, D.C.

ATTICUS REAL ESTATE DEVELOPMENT  
 CITY OF ROCKWALL, ROCKWALL COUNTY, TEXAS  
 SUMMER LEE DRIVE

COLOR LEGEND		ELEVATION NOTES		SYMBOL LEGEND - ELEVATIONS	
1. ALL MATERIALS SHALL BE FINISHED WITH A GLOSSY FINISH. ALL MATERIALS SHALL BE FINISHED WITH A GLOSSY FINISH. ALL MATERIALS SHALL BE FINISHED WITH A GLOSSY FINISH.	2. ALL MATERIALS SHALL BE FINISHED WITH A GLOSSY FINISH. ALL MATERIALS SHALL BE FINISHED WITH A GLOSSY FINISH. ALL MATERIALS SHALL BE FINISHED WITH A GLOSSY FINISH.	3. ALL MATERIALS SHALL BE FINISHED WITH A GLOSSY FINISH. ALL MATERIALS SHALL BE FINISHED WITH A GLOSSY FINISH. ALL MATERIALS SHALL BE FINISHED WITH A GLOSSY FINISH.	4. ALL MATERIALS SHALL BE FINISHED WITH A GLOSSY FINISH. ALL MATERIALS SHALL BE FINISHED WITH A GLOSSY FINISH. ALL MATERIALS SHALL BE FINISHED WITH A GLOSSY FINISH.	5. ALL MATERIALS SHALL BE FINISHED WITH A GLOSSY FINISH. ALL MATERIALS SHALL BE FINISHED WITH A GLOSSY FINISH. ALL MATERIALS SHALL BE FINISHED WITH A GLOSSY FINISH.	6. ALL MATERIALS SHALL BE FINISHED WITH A GLOSSY FINISH. ALL MATERIALS SHALL BE FINISHED WITH A GLOSSY FINISH. ALL MATERIALS SHALL BE FINISHED WITH A GLOSSY FINISH.
7. ALL MATERIALS SHALL BE FINISHED WITH A GLOSSY FINISH. ALL MATERIALS SHALL BE FINISHED WITH A GLOSSY FINISH. ALL MATERIALS SHALL BE FINISHED WITH A GLOSSY FINISH.	8. ALL MATERIALS SHALL BE FINISHED WITH A GLOSSY FINISH. ALL MATERIALS SHALL BE FINISHED WITH A GLOSSY FINISH. ALL MATERIALS SHALL BE FINISHED WITH A GLOSSY FINISH.	9. ALL MATERIALS SHALL BE FINISHED WITH A GLOSSY FINISH. ALL MATERIALS SHALL BE FINISHED WITH A GLOSSY FINISH. ALL MATERIALS SHALL BE FINISHED WITH A GLOSSY FINISH.	10. ALL MATERIALS SHALL BE FINISHED WITH A GLOSSY FINISH. ALL MATERIALS SHALL BE FINISHED WITH A GLOSSY FINISH. ALL MATERIALS SHALL BE FINISHED WITH A GLOSSY FINISH.	11. ALL MATERIALS SHALL BE FINISHED WITH A GLOSSY FINISH. ALL MATERIALS SHALL BE FINISHED WITH A GLOSSY FINISH. ALL MATERIALS SHALL BE FINISHED WITH A GLOSSY FINISH.	12. ALL MATERIALS SHALL BE FINISHED WITH A GLOSSY FINISH. ALL MATERIALS SHALL BE FINISHED WITH A GLOSSY FINISH. ALL MATERIALS SHALL BE FINISHED WITH A GLOSSY FINISH.



1. BLDG. TYPE I - NORTH ELEVATION  
 SCALE: 1/8" = 1'-0"

2. BLDG. TYPE I - SOUTH ELEVATION  
 SCALE: 1/8" = 1'-0"

These drawings are preliminary and not to be used for construction.

HUMPHREYS & PARTNERS  
 ARCHITECTS, L.P.  
 537 ALYON ROAD, SUITE 300, DALLAS, TEXAS 75240  
 (214) 761-1011 FAX: (214) 761-4239  
 WWW.HUMPHREYS.COM

DALLAS - OKLAHOMA - SCOTTSDALE - CHICAGO - DENVER - HOUSTON - LOS ANGELES - MIAMI - NEW YORK - PHOENIX - PORTLAND - SAN ANTONIO - TAMPA - WASHINGTON, D.C.

ATTICUS REAL ESTATE DEVELOPMENT  
 CITY OF ROCKWALL, ROCKWALL COUNTY, TEXAS  
 SUMMER LEE DRIVE



3. BLDG. TYPE I - WEST ELEVATION  
 SCALE: 1/8" = 1'-0"



Drawn by	MS
Checked by	BE
Project Number	200
Revision	XXXXXXXX
Issue	XXXXXXXX
Notes	XXXXXXXX
7	DATE
8	DATE
9	DATE
10	DATE
11	DATE
12	DATE

The professional seal and signature with the name of the architect shall be placed on the drawing. The seal shall be placed on the drawing in the right hand corner. The signature shall be placed on the drawing in the left hand corner. The architect shall be responsible for the accuracy of the information and data furnished to the architect. The architect shall be responsible for the accuracy of the information and data furnished to the architect. The architect shall be responsible for the accuracy of the information and data furnished to the architect.

HARBOUR URBAN CENTER PODIUM  
 SUMMER LEE DRIVE  
 CITY OF ROCKWALL, ROCKWALL COUNTY, TEXAS  
 ATTICUS REAL ESTATE DEVELOPMENT

This drawing is for preliminary construction only and is not to be used for construction.

HUMPHREYS & PARTNERS ARCHITECTS, L.P.  
 5339 ALPHEA ROAD, SUITE 300 DALLAS, TEXAS 75240  
 (214) 701-9632 FAX (214) 963-7888  
 www.humphreys.com  
 DALLAS - OKLAHO - NEW ORLEANS - NEW YORK - NEWPORT BEACH - CHICAGO  
 SAN ANTONIO - SCOTTSDALE - EMERYVILLE - DENVER - HOUSTON - MEMPHIS



DESIGN DEVELOPMENT

COLOR LEGEND	ELEVATION NOTES	SYMBOL LEGEND - ELEVATIONS
<p>1. ALL EXTERIOR WALLS, FLOOR SLABS, WALLS, CORNICES, ROOFING, BALCONY RAILS, TRUSS STRUCTURES, AND ALL EXTERIOR METALWORK SHALL BE FINISHED WITH THE SAME MATERIAL AND COLOR AS SHOWN ON THIS DRAWING UNLESS OTHERWISE NOTED.</p> <p>2. ALL EXTERIOR WALLS, FLOOR SLABS, WALLS, CORNICES, ROOFING, BALCONY RAILS, TRUSS STRUCTURES, AND ALL EXTERIOR METALWORK SHALL BE FINISHED WITH THE SAME MATERIAL AND COLOR AS SHOWN ON THIS DRAWING UNLESS OTHERWISE NOTED.</p> <p>3. ALL EXTERIOR WALLS, FLOOR SLABS, WALLS, CORNICES, ROOFING, BALCONY RAILS, TRUSS STRUCTURES, AND ALL EXTERIOR METALWORK SHALL BE FINISHED WITH THE SAME MATERIAL AND COLOR AS SHOWN ON THIS DRAWING UNLESS OTHERWISE NOTED.</p> <p>4. ALL EXTERIOR WALLS, FLOOR SLABS, WALLS, CORNICES, ROOFING, BALCONY RAILS, TRUSS STRUCTURES, AND ALL EXTERIOR METALWORK SHALL BE FINISHED WITH THE SAME MATERIAL AND COLOR AS SHOWN ON THIS DRAWING UNLESS OTHERWISE NOTED.</p> <p>5. ALL EXTERIOR WALLS, FLOOR SLABS, WALLS, CORNICES, ROOFING, BALCONY RAILS, TRUSS STRUCTURES, AND ALL EXTERIOR METALWORK SHALL BE FINISHED WITH THE SAME MATERIAL AND COLOR AS SHOWN ON THIS DRAWING UNLESS OTHERWISE NOTED.</p> <p>6. ALL EXTERIOR WALLS, FLOOR SLABS, WALLS, CORNICES, ROOFING, BALCONY RAILS, TRUSS STRUCTURES, AND ALL EXTERIOR METALWORK SHALL BE FINISHED WITH THE SAME MATERIAL AND COLOR AS SHOWN ON THIS DRAWING UNLESS OTHERWISE NOTED.</p> <p>7. ALL EXTERIOR WALLS, FLOOR SLABS, WALLS, CORNICES, ROOFING, BALCONY RAILS, TRUSS STRUCTURES, AND ALL EXTERIOR METALWORK SHALL BE FINISHED WITH THE SAME MATERIAL AND COLOR AS SHOWN ON THIS DRAWING UNLESS OTHERWISE NOTED.</p> <p>8. ALL EXTERIOR WALLS, FLOOR SLABS, WALLS, CORNICES, ROOFING, BALCONY RAILS, TRUSS STRUCTURES, AND ALL EXTERIOR METALWORK SHALL BE FINISHED WITH THE SAME MATERIAL AND COLOR AS SHOWN ON THIS DRAWING UNLESS OTHERWISE NOTED.</p> <p>9. ALL EXTERIOR WALLS, FLOOR SLABS, WALLS, CORNICES, ROOFING, BALCONY RAILS, TRUSS STRUCTURES, AND ALL EXTERIOR METALWORK SHALL BE FINISHED WITH THE SAME MATERIAL AND COLOR AS SHOWN ON THIS DRAWING UNLESS OTHERWISE NOTED.</p> <p>10. ALL EXTERIOR WALLS, FLOOR SLABS, WALLS, CORNICES, ROOFING, BALCONY RAILS, TRUSS STRUCTURES, AND ALL EXTERIOR METALWORK SHALL BE FINISHED WITH THE SAME MATERIAL AND COLOR AS SHOWN ON THIS DRAWING UNLESS OTHERWISE NOTED.</p> <p>11. ALL EXTERIOR WALLS, FLOOR SLABS, WALLS, CORNICES, ROOFING, BALCONY RAILS, TRUSS STRUCTURES, AND ALL EXTERIOR METALWORK SHALL BE FINISHED WITH THE SAME MATERIAL AND COLOR AS SHOWN ON THIS DRAWING UNLESS OTHERWISE NOTED.</p> <p>12. ALL EXTERIOR WALLS, FLOOR SLABS, WALLS, CORNICES, ROOFING, BALCONY RAILS, TRUSS STRUCTURES, AND ALL EXTERIOR METALWORK SHALL BE FINISHED WITH THE SAME MATERIAL AND COLOR AS SHOWN ON THIS DRAWING UNLESS OTHERWISE NOTED.</p>	<p>1. FINISH SHALL BE THE SAME AS SHOWN ON THIS DRAWING UNLESS OTHERWISE NOTED.</p> <p>2. FINISH SHALL BE THE SAME AS SHOWN ON THIS DRAWING UNLESS OTHERWISE NOTED.</p> <p>3. FINISH SHALL BE THE SAME AS SHOWN ON THIS DRAWING UNLESS OTHERWISE NOTED.</p> <p>4. FINISH SHALL BE THE SAME AS SHOWN ON THIS DRAWING UNLESS OTHERWISE NOTED.</p> <p>5. FINISH SHALL BE THE SAME AS SHOWN ON THIS DRAWING UNLESS OTHERWISE NOTED.</p> <p>6. FINISH SHALL BE THE SAME AS SHOWN ON THIS DRAWING UNLESS OTHERWISE NOTED.</p> <p>7. FINISH SHALL BE THE SAME AS SHOWN ON THIS DRAWING UNLESS OTHERWISE NOTED.</p> <p>8. FINISH SHALL BE THE SAME AS SHOWN ON THIS DRAWING UNLESS OTHERWISE NOTED.</p> <p>9. FINISH SHALL BE THE SAME AS SHOWN ON THIS DRAWING UNLESS OTHERWISE NOTED.</p> <p>10. FINISH SHALL BE THE SAME AS SHOWN ON THIS DRAWING UNLESS OTHERWISE NOTED.</p> <p>11. FINISH SHALL BE THE SAME AS SHOWN ON THIS DRAWING UNLESS OTHERWISE NOTED.</p> <p>12. FINISH SHALL BE THE SAME AS SHOWN ON THIS DRAWING UNLESS OTHERWISE NOTED.</p>	<p>ROOFING: FLAT ROOF, GABLE ROOF, SHED ROOF, etc.</p> <p>WALLS: BRICK, BLOCK, STUCCO, etc.</p> <p>FLOORING: CARPET, TILE, WOOD, etc.</p> <p>CEILING: POP, GYP, etc.</p> <p>TRUSS: TRUSS, etc.</p> <p>METALWORK: ALUMINUM, GALVANNEED STEEL, etc.</p> <p>GLASS: GLASS, etc.</p> <p>STONE: STONE, etc.</p> <p>WOOD: WOOD, etc.</p> <p>PLASTER: PLASTER, etc.</p> <p>CONCRETE: CONCRETE, etc.</p> <p>PAINT: PAINT, etc.</p> <p>FINISH: FINISH, etc.</p>





