


0 40 80 160 240 320 Feet

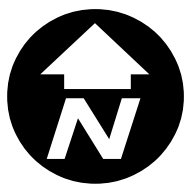
SP2016-023 - LAKESHORE COMMONS
SITE PLAN - LOCATION MAP = 



City of Rockwall

Planning & Zoning Department
385 S. Goliad Street
Rockwall, Texas 75032
(P): (972) 771-7745
(W): www.rockwall.com

The City of Rockwall GIS maps are continually under development and therefore subject to change without notice. While we endeavor to provide timely and accurate information, we make no guarantees. The City of Rockwall makes no warranty, express or implied, including warranties of merchantability and fitness for a particular purpose. Use of the information is the sole responsibility of the user.





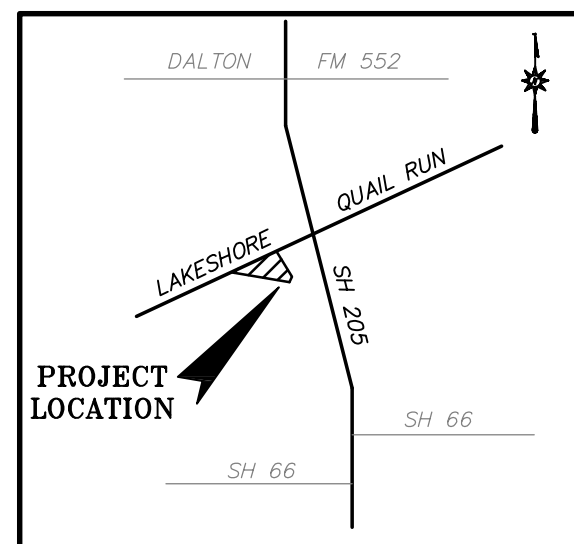
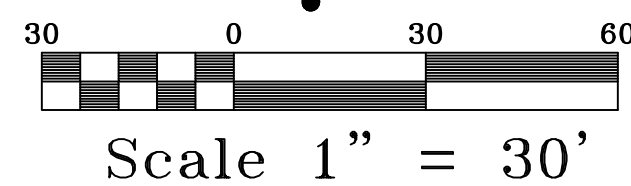
BEFORE YOU DIG CALL:
1-800-245-4545



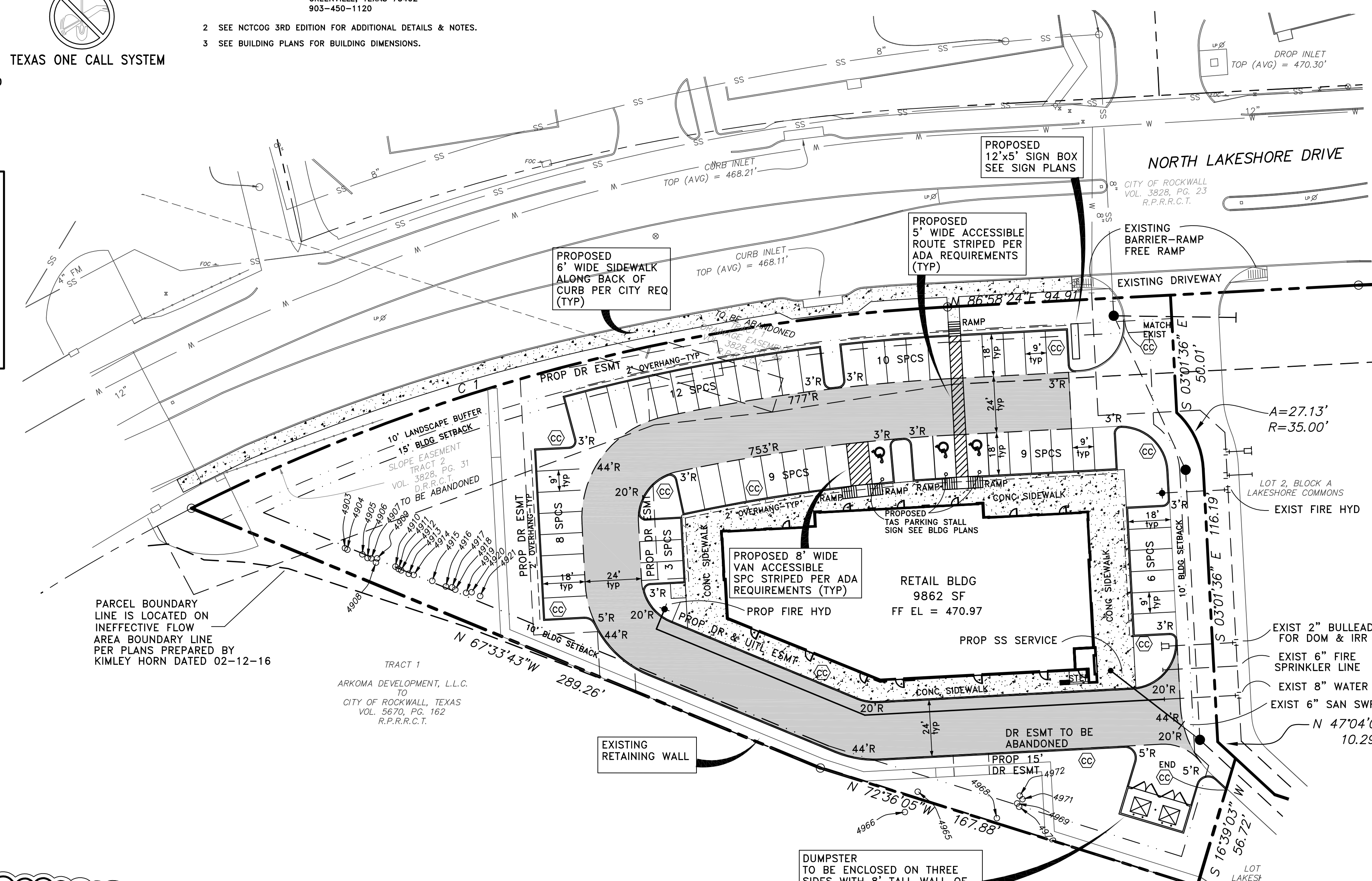
TEXAS ONE CALL SYSTEM

NOTES:

- BOUNDARY/TOPO SURVEY PROVIDED BY:
STOVALL & ASSOCIATES LAND SURVEYING
6417 WESLEY STREET
GREENVILLE, TEXAS 75402
903-450-1120
- SEE NCTCOG 3RD EDITION FOR ADDITIONAL DETAILS & NOTES.
- SEE BUILDING PLANS FOR BUILDING DIMENSIONS.



VICINITY MAP



LEGEND			
PROPOSED	EXISTING		
500	PROPOSED CONTOURS	○	POWER POLE
515.00	SPOT ELEVATION AT FINISHED GRADE	⊗	ANCHOR
514.00	INDICATES TOP OF STRUCTURE	⊕	WATER METER
513.50	INDICATES FLOW LINE ELEVATION	⊖	IRIGATION CONTROL VALVE
W	PROPOSED WATER LINE	⊙	TELEPHONE PEDESTAL
SS	PROPOSED SANITARY SEWER LINE	⊕	GAS METER
SD	PROPOSED STORM DRAIN LINE	⊕	MALLEOX
CD	PROPOSED CONDUIT	⊕	LIGHT POLE
⊕	PROPOSED GAS	⊕	FIRE HYDRANT
⊕	CONCRETE CURB PER CITY STD	BL	BUILDING LINE
⊕	WATER SERVICE TAP NO	UE	UTILITY EASEMENT
		DUE	DRAINAGE & UTILITY EASEMENT
		FOC	FIBER OPTIC CABLE MARKER
		GAS	GAS SIGN
		SSSB	SUB SURFACE SERVICE BOX
		⊕	TRAFFIC SIGN
		⊕	TRAFFIC SIGNAL
		U.E.	UTILITY EASEMENT
		⊕	GAS STUB
		⊕	GAS TEST STATION
		⊕	BURIED CABLE SIGN

SITE PLAN NOTES:

- FIRE LANES SHALL BE DESIGNED AND CONSTRUCTED PER CITY STANDARDS.
- ALL SIGNAGE BY SEPARATE PERMIT.
- ALL MATERIALS AND CONSTRUCTION SHALL BE IN ACCORDANCE WITH THE CITY OF ROCKWALL STD SPECIFICATIONS AND CONSTRUCTION STDS, AND STD SPECIFICATIONS FOR PUBLIC WORKS CONSTRUCTION PREPARED BY NORTH CENTRAL TEXAS COUNCIL OF GOVERNMENTS (LATEST REVISION).
- THE CONTRACTOR SHALL BE RESPONSIBLE FOR PROTECTING ALL EXISTING IMPROVEMENTS IN THE CONSTRUCTION OF THIS PROJECT. THE CONTRACTOR IS RESPONSIBLE FOR REPAIRS OF DAMAGE TO ANY EXISTING IMPROVEMENTS DURING CONSTRUCTION. REPAIRS SHALL BE EQUAL TO OR BETTER THAN CONDITION PRIOR TO CONSTRUCTION.
- THE LIGHTING FOR THE SUBJECT PROPERTY WILL BE CONSTRUCTED IN CONFORMANCE WITH CITY REQUIREMENTS. SEE BLDG PLANS.

SITE LAYOUT NOTES:

- ALL FIRE LANES ARE 24' WIDE WITH MIN 20' INSIDE RADIUS AND MIN 44' OUTSIDE RADIUS. FIRE LANES SHALL BE CONSTRUCTED AND STRIPED PER CITY OF ROCKWALL FIRE DEPT REQUIREMENTS.
- ALL PARKING STALLS, INCLUDING HANDICAP STALLS, SHALL BE 9' WIDE x 18' DEEP UNLESS SHOWN OTHERWISE. VAN ACCESSIBLE AREA SHALL BE 9' MIN WIDE x 18' DEEP. OTHER ACCESSIBLE ADJACENT TO H/C PARKING SHALL BE 5' WIDE x 18' DEEP. ALL PARKING STALLS SHALL BE CONSTRUCTED PER PAVING PLAN.
- ALL OTHER DRIVING LANES SHALL BE MIN 24' WIDE AND CONSTRUCTED PER THE PAVING.

SITE SUMMARY - LOT 1	
ZONED	PD-65 (FOR GR USES)
PROPOSED USE	RETAIL/RESTAURANT/MEDICAL OFC
LOT AREA	1.47 AC (64,106.50 SF)
BUILDING AREA	9862 SF
PARKING	
RETAIL = 5819 SF	
REQUIRED TOTAL	24 SPACES
1/250	5819/250=23.3
RESTAURANT = 1972 SF	
REQUIRED TOTAL	20 SPACES
1/100	1972/100=19.7
MEDICAL OFFICE = 2071 SF	
REQUIRED TOTAL	11 SPACES
1/200	2071/200=10.4
REQUIRED TOTAL	55 SPACES (52 REG; 3 H/C)
PROVIDED TOTAL	57 SPACES (54 REG; 3 H/C)
LOT COVERAGE	15.4% (9862 SF)
IMPERVIOUS AREA	67% (42,915 SF)
PERVIOUS AREA	33% (21,191 SF)

NOTE:
CONTRACTOR TO VERIFY HORIZONTAL & VERTICAL LOCATION OF ALL EXISTING UTILITIES PRIOR TO BEGINNING ANY CONSTRUCTION/EXCAVATION AND NOTIFY THE ENGINEER OF ANY DISCREPANCIES EXISTING UTILITIES SHOWN ON THESE PLANS ARE BASED ON COMBINATION OF FIELD SURVEY & CITY RECORD DRAWINGS

ADA BARRIER-FREE RAMP REQUIREMENTS:

- TEXTURE: SHALL CONSIST OF EXPOSED CRUSHED STONE AGGREGATE, ROUGHENED CONCRETE, RUBBER, RAISED ABRASIVE STRIPS, OR TRUNCATED DOMES (SEE TAS/ADS STDS FOR ADDITIONAL OPTIONS). SURFACE MUST BE DETECTABLE UNDER FOOT. SURFACES THAT ARE RAISED OR ETCHED IN A WAY THAT WOULD ALLOW WATER TO ACCUMULATE ARE PROHIBITED.
- CONTRAST: FOR PURPOSES OF WARNING, THE FULL WIDTH AND DEPTH OF CURB RAMPS SHALL HAVE A LIGHT REFLECTIVE VALUE AND TEXTURE THAT SIGNIFICANTLY CONTRASTS WITH THAT OF ADJOINING PEDESTRIAN ROUTES.
- RAMPS WITHIN THE CITY RIGHT OF WAY SHALL BE CONSTRUCTED PER CITY STD. PROHIBITED DOMES AT PLATFORM BOARDING EDGES SHALL BE A MIN OF 24" WIDE AND SHALL EXTEND THE FULL LENGTH OF THE PUBLIC USE AREA OF THE PLATFORM.

ADA/TAS SLOPE REQUIREMENTS	
ACCESSIBLE ROUTE	<5% SLOPE <2% CROSS SLOPE
RAMP & CURB RAMP	<8.33% (1:12) <2% CROSS SLOPE
TAS PARKING & ACCESSIBLE	<2% SLOPE IN ANY DIRECTION

NOTE:
PARKING & ACCESSIBLE ROUTES FOR DISABLED PERSONS SHALL BE DESIGNATED, DESIGNED & CONSTRUCTED PER CITY, TAS & ADA REQUIREMENTS

FIRE LANE:

HATCHED AREA INDICATES PROP 24' FIRE LANE PER CITY OF ROCKWALL FIRE DEPT REQ

Curve	Radius	Length	Delta	Chord	Chord Bear.
C 1	807.50'	335.03'	23°46'19"	332.63'	N 75°05'15" E

OWNER:
ARCOMA DEVELOPMENT, LLC
203 E INTERSTATE 30
ROCKWALL, TX 75087
972-771-6000

DEVELOPER:
MOORE WORTH INVESTMENTS, LLC
8445 FREEPORT PARKWAY, SUITE 175
IRVING, TX 75063
214-415-9993

This document is released for the purpose of REVIEW under the authority of Mark H. Hickman, P.E. 78409 on 09-16-16. It is not to be used for construction bidding permit purposes.

Hickman Consulting Engineers, Inc.
3094 County Road 1024
Farmersville, Texas 75442
Ph (972)764-2499
markredhick@gmail.com
Engineers Planners

HCE

SITE PLAN
LAKESHORE COMMONS
LOT 1; LAKESHORE COMMONS
ROCKWALL, ROCKWALL COUNTY, TEXAS
MOORE WORTH INVESTMENTS, LLC
8445 FREEPORT PARKWAY, SUITE 175
IRVING, TX 75063
214-415-9993

SCALE: 1"=30'
DATE: SEPT/2016
DRAWN BY: FP
CHK'D BY: MHH
JOB NO: 1501-357
FILE: 16-160157-16-PR-WD
DATE SUBMITTED: 09/16/16(1)

Hickman Consulting Engineers, Inc.
STATE OF TEXAS
MARK H. HICKMAN
78409
PROFESSIONAL ENGINEER
E-12172

DATE	BY	DESCRIPTION

SHEET
C-2

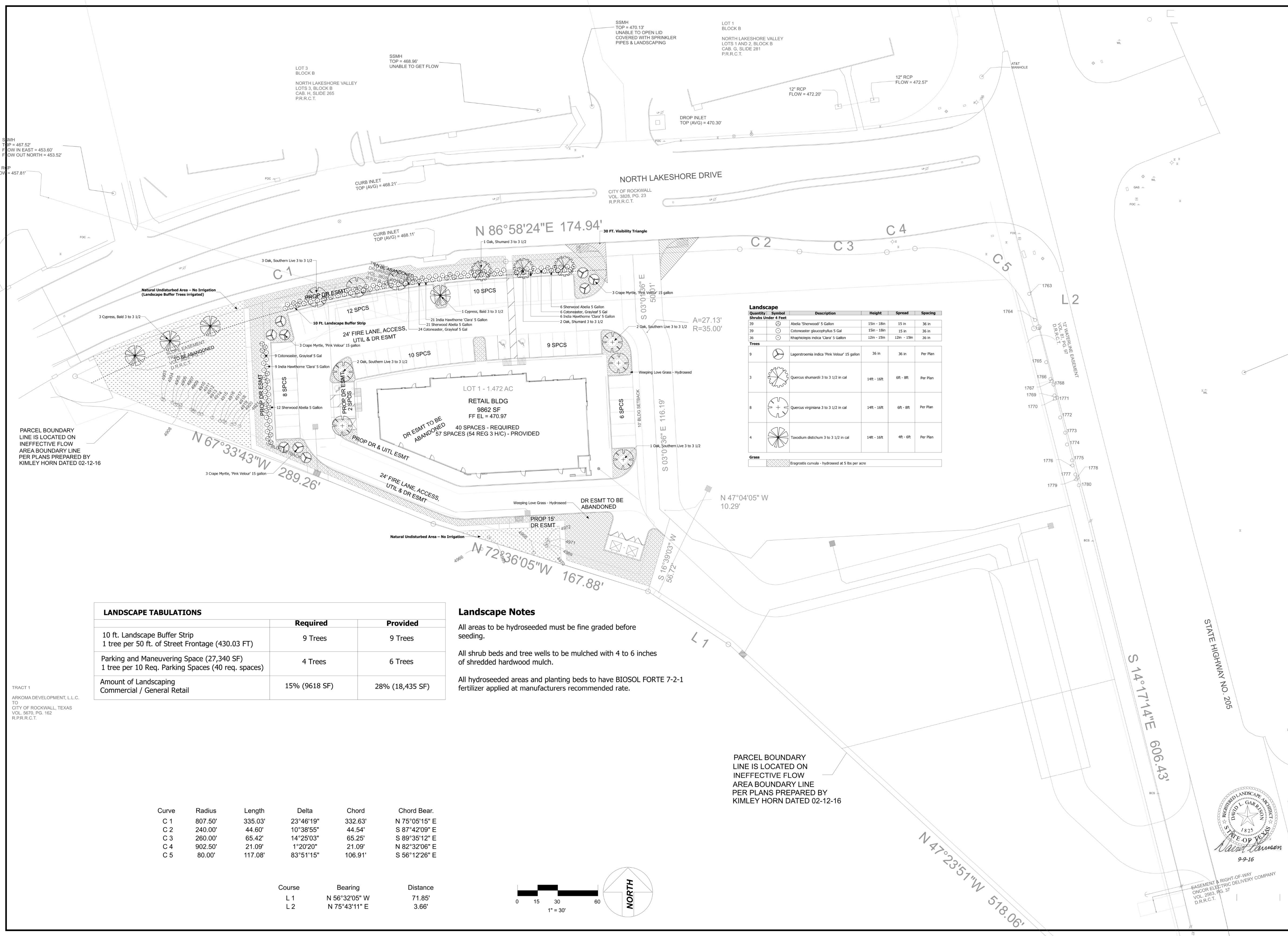
NOTES

2) OPPOSITE BENCHMARK - STEEL ROD W/ACCESS CAP STAMPED N 1495 1986 @ THE INTERSECTION OF THE NORTH LINE OF AIRPORT ROAD WITH THE WEST LINE OF THE AIRPORT ACCESS ROAD. ELEVATION = 566.70' (VERTICAL DATUM: NAVD 1986)

BM#1 = 1/2" IRON ROD WITH CAP STAMPED "STOVALL TRAVESSE" LOCATED AT THE INTERSECTION OF THE SOUTH LINE OF LAKESHORE DRIVE WITH THE WEST LINE OF STATE HIGHWAY NO. 205. ELEVATION = 476.35'

BM#2 = "X" CUT ON TOP OF INLET IN THE NORTH LINE OF PECAN VALLEY DRIVE ± 554' WEST OF STATE HIGHWAY NO. 205. ELEVATION = 468.31'

Note: Copyright © Hickman Consulting Engineers, Inc. All rights reserved. No part of this drawing may be reproduced by photocopying, recording or by any other means, or stored, processed or transmitted in or by any computer or other systems without the prior written permission of Hickman Consulting Engineers, Inc. Copies of this plan without an original signature and seal are not valid.



Landscape

Quantity	Symbol	Description	Height	Spread	Spacing
Shrubs Under 4 Feet					
39	(Symbol)	Abelia 'Sherwood' 5 Gallon	15in - 18in	15 in	36 in
39	(Symbol)	Cotoneaster glaucophyllus 5 Gal	15in - 18in	15 in	36 in
36	(Symbol)	Rhaphtolaps indica 'Clara' 5 Gallon	12in - 15in	12in - 15in	36 in
Trees					
9	(Symbol)	Lagerstroemia indica 'Pink Velour' 15 gallon	36 in	36 in	Per Plan
3	(Symbol)	Quercus shumardii 3 to 3 1/2 in cal	14ft - 16ft	6ft - 8ft	Per Plan
8	(Symbol)	Quercus virginiana 3 to 3 1/2 in cal	14ft - 16ft	6ft - 8ft	Per Plan
4	(Symbol)	Taxodium distichum 3 to 3 1/2 in cal	14ft - 16ft	4ft - 6ft	Per Plan
Grass					
Eragrostis curvula - hydroseeded at 5 lbs per acre					

LANDSCAPE TABULATIONS

	Required	Provided
10 ft. Landscape Buffer Strip 1 tree per 50 ft. of Street Frontage (430.03 FT)	9 Trees	9 Trees
Parking and Maneuvering Space (27,340 SF) 1 tree per 10 Req. Parking Spaces (40 req. spaces)	4 Trees	6 Trees
Amount of Landscaping Commercial / General Retail	15% (9618 SF)	28% (18,435 SF)

Landscape Notes

All areas to be hydroseeded must be fine graded before seeding.

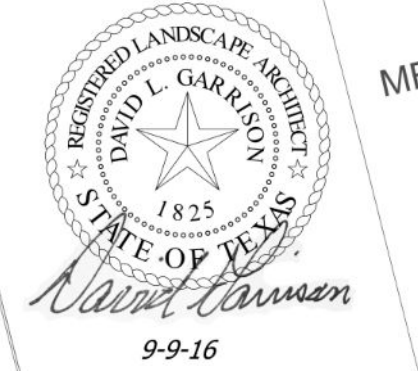
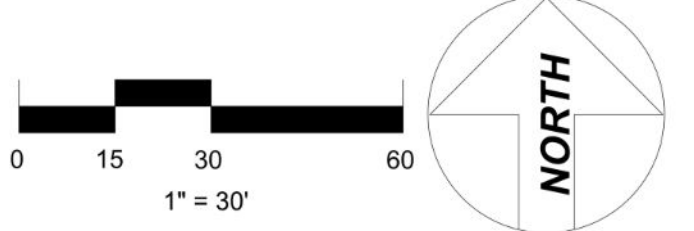
All shrub beds and tree wells to be mulched with 4 to 6 inches of shredded hardwood mulch.

All hydroseeded areas and planting beds to have BIOSOL FORTE 7-2-1 fertilizer applied at manufacturers recommended rate.

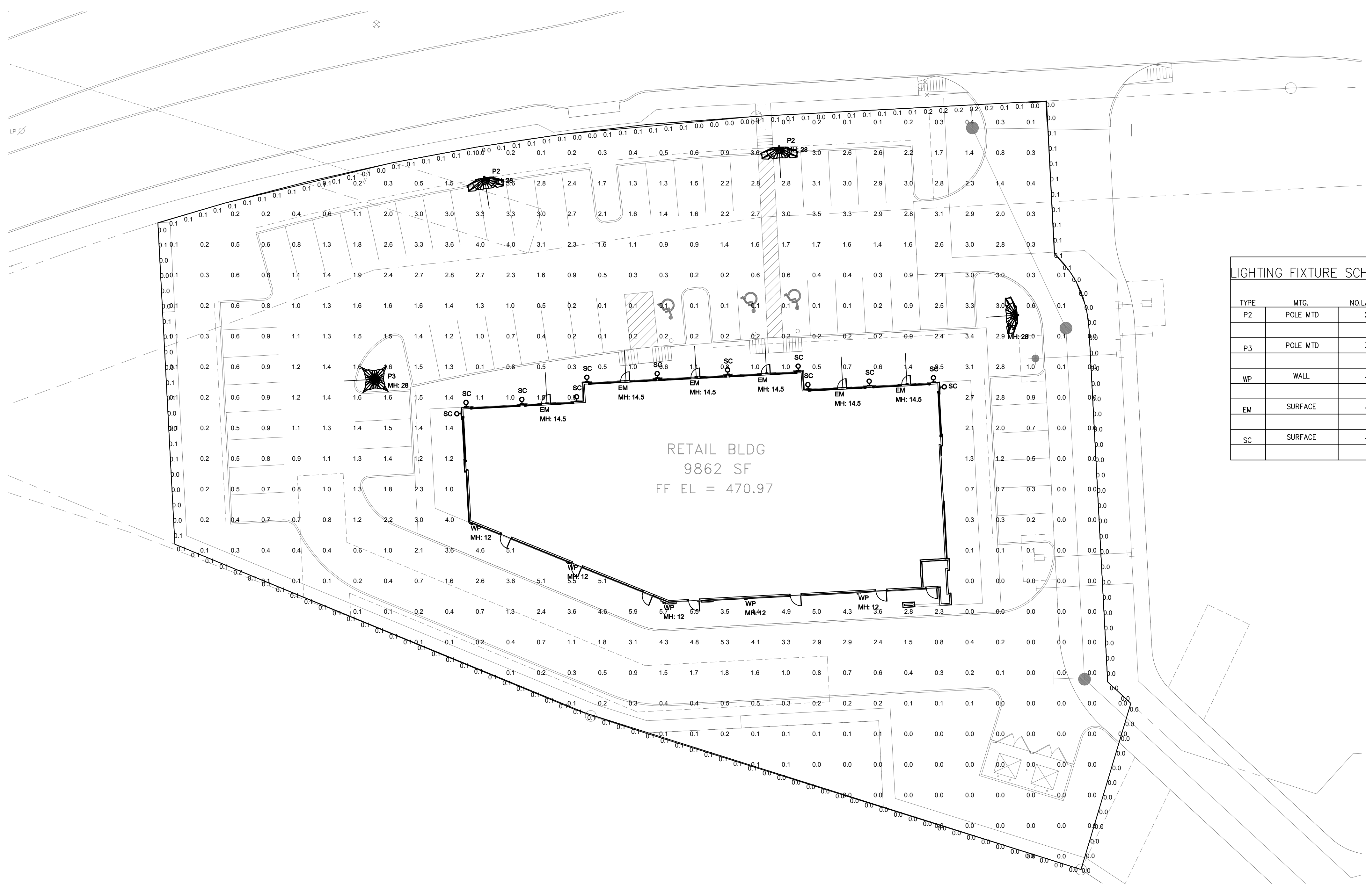
TRACT 1
ARKOMA DEVELOPMENT, L.L.C.
TO
CITY OF ROCKWALL, TEXAS
VOL. 5670, PG. 162
R.P.R.R.C.T.

Curve	Radius	Length	Delta	Chord	Chord Bear.
C 1	807.50'	335.03'	23°46'19"	332.63'	N 75°05'15" E
C 2	240.00'	44.60'	10°38'55"	44.54'	S 87°42'09" E
C 3	260.00'	65.42'	14°25'03"	65.25'	S 89°35'12" E
C 4	902.50'	21.09'	1°20'20"	21.09'	N 82°32'06" E
C 5	80.00'	117.08'	83°51'15"	106.91'	S 56°12'26" E

Course	Bearing	Distance
L 1	N 56°32'05" W	71.85'
L 2	N 75°43'11" E	3.66'



9-9-16
EASEMENT & RIGHT-OF-WAY
ONCORE ELECTRIC DELIVERY COMPANY
VOL. 2563, PG. 37
D.R.R.C.T.



SITE LIGHTING PLAN
SCALE: 1"=20'

GENERAL NOTES

1. ALL LIGHT FIXTURES SHALL BE MOUNTED AT 28 FT AFF. WHICH IS LESS THAN THE REQUIRED MAX HEIGHT OF 30 FT.
2. THE FOOTCANDLE LEVELS AT THE PROPERTY LINES SHALL BE .2 FC OR LESS AS REQUIRED.
3. ALL LIGHT FIXTURES SHALL BE LED TYPE.
4. THE AVERAGE FOOTCANDLE ILLUMINANCE IS 1.4 FC.

LIGHTING FIXTURE SCHEDULE

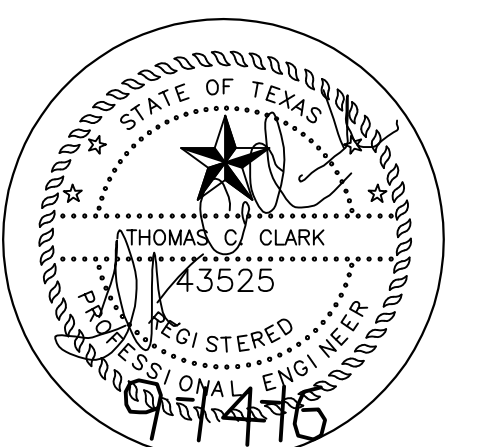
TYPE	MTG.	NO. LAMPS	LAMPS	WATTS	VOLTS	MANUFACTURER	CATALOG NUMBER	NOTES
P2	POLE MTD	2	LED	226	208	COOPER	GLEON-AF-02-LED-E1-AFL-HSS	DOUBLE HEADED POLE LT ON 25 FT STEEL POLE
P3	POLE MTD	3	LED	339	208	COOPER	GLEON-AF-02-LED-E1-SNO	TRIPLE HEADED POLE LT ON 25 FT STEEL POLE
WP	WALL	1	LED	47	208	COOPER	IST-E02-LED-E1-BL2-7030	WALL PACK W/ SHARP CUTOFF
EM	SURFACE	1	LED	11	120	COOPER	MUE10X-T-21329	EMERG. EXT. EGRESS FIXT.
SC	SURFACE	1	LED	10	208	STUDIO M	SM868354CLTE	MULLION MOUNTED WALL MTD DECO SCNCE



LAKESHORE COMMONS RETAIL
ROCKWALL, TX

APPLICANT:
MOORE WORTH INVESTMENTS, LLC
10210 N CENTRAL EXP
SUITE 300
DALLAS TX 75231
CONTACT: WORTH WILLIAMS
214.415.9993

LOT 1, BLOCK A
LAKESHORE COMMONS ADDN



TOM C CLARK
ENGINEER

THIS PHOTOMETRIC PLAN HAS BEEN PROVIDED BY:
CLARK ENGINEERING ASSOCIATES REGISTRATION NO. 43525
8704 BALTUSUROL DRIVE
FLOWER MOUND, TX 75022
214.926.7840

E3.0

JOB#: 15-074
ISSUE DATE: 09/12/2016
SCALE: AS NOTED
APPROVED BY:

DATE: _____

COPYRIGHT © 2016 GSO ARCHITECTS, INC.
THESE DRAWINGS, OR PARTS THEREOF, MAY NOT BE
REPRODUCED IN ANY FORM, BY ANY METHOD,
FOR ANY PURPOSE, WITHOUT PRIOR WRITTEN
CONSENT FROM GSO ARCHITECTS, INC.

DESCRIPTION

The Galleon™ LED luminaire delivers exceptional performance in a highly scalable, low-profile design. Patented, high-efficiency AccuLED Optics™ system provides uniform and energy conscious illumination to walkways, parking lots, roadways, building areas and security lighting applications. IP66 rated and UL/cUL Listed for wet locations.

Catalog #		Type
Project		
Comments		Date
Prepared by		

SPECIFICATION FEATURES

Construction

Extruded aluminum driver enclosure thermally isolated from Light Squares for optimal thermal performance. Heavy-wall, die-cast aluminum end caps enclose housing and die-cast aluminum heat sinks. A unique, patent pending interlocking housing and heat sink provides scalability with superior structural rigidity. 3G vibration tested and rated. Optional tool-less hardware available for ease of entry into electrical chamber. Housing is IP66 rated.

Optics

Patented, high-efficiency injection-molded AccuLED Optics technology. Optics are precisely designed to shape the distribution maximizing efficiency and application spacing. AccuLED Optics create consistent distributions with the scalability to meet customized application requirements. Offered standard in 4000K (+/- 275K) CCT 70 CRI. Optional 3000K, 5000K and 6000K CCT.

Electrical

LED drivers are mounted to removable tray assembly for ease of maintenance. 120-277V 50/60Hz, 347V 60Hz or 480V 60Hz operation. 480V is compatible for use with 480V Wye systems only. Standard with 0-10V dimming. Shipped standard with Eaton proprietary circuit module designed to withstand 10kV of transient line surge. The Galleon LED luminaire is suitable for operation in -40°C to 40°C ambient environments. For applications with ambient temperatures exceeding 40°C, specify the HA (High Ambient) option. Light Squares are IP66 rated. Greater than 90% lumen maintenance expected at 60,000 hours. Available in standard 1A drive current and optional 600mA, 800mA and 1200mA drive currents (nominal).

Mounting

STANDARD ARM MOUNT: Extruded aluminum arm includes internal bolt guides allowing for easy positioning of fixture during mounting. When mounting two or more luminaires at 90° and 120° apart, the EA extended arm may be required. Refer to the

arm mounting requirement table. Round pole adapter included. For wall mounting, specify wall mount bracket option. **QUICK MOUNT ARM:** Adapter is bolted directly to the pole. Quick mount arm slide into place on the adapter and is secured via two screws, facilitating quick and easy installation. The versatile, patent pending, quick mount arm accommodates multiple drill patterns ranging from 1-1/2" to 4-7/8". Removal of the door on the quick mount arm enables wiring of the fixture without having to access the driver compartment. A knock-out enables round pole mounting.

Finish

Housing finished in super durable TGIC polyester powder coat paint, 2.5 mil nominal thickness for superior protection against fade and wear. Heat sink is powder coated black. Standard housing colors include black, bronze, grey, white, dark platinum and graphite metallic. RAL and custom color matches available.

Warranty

Five-year warranty.

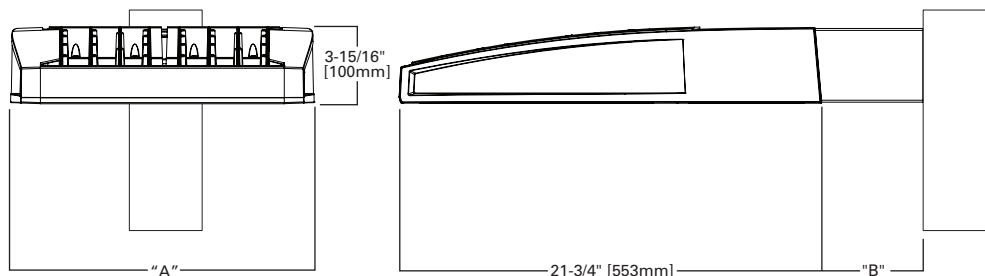


GLEON GALLEON LED

1-10 Light Squares
Solid State LED

AREA/SITE LUMINAIRE

DIMENSIONS

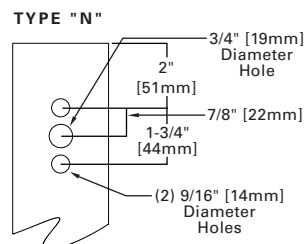


DIMENSION DATA

Number of Light Squares	"A" Width	"B" Standard Arm Length	"B" Optional Arm Length ¹	Weight with Arm (lbs.)	EPA with Arm ² (Sq. Ft.)
1-4	15-1/2" (394mm)	7" (178mm)	10" (254mm)	33 (15.0 kgs.)	0.96
5-6	21-5/8" (549mm)	7" (178mm)	10" (254mm)	44 (20.0 kgs.)	1.00
7-8	27-5/8" (702mm)	7" (178mm)	13" (330mm)	54 (24.5 kgs.)	1.07
9-10	33-3/4" (857mm)	7" (178mm)	16" (406mm)	63 (28.6 kgs.)	1.12

NOTES: 1. Optional arm length to be used when mounting two fixtures at 90° on a single pole. 2. EPA calculated with optional arm length.

DRILLING PATTERN



CERTIFICATION DATA

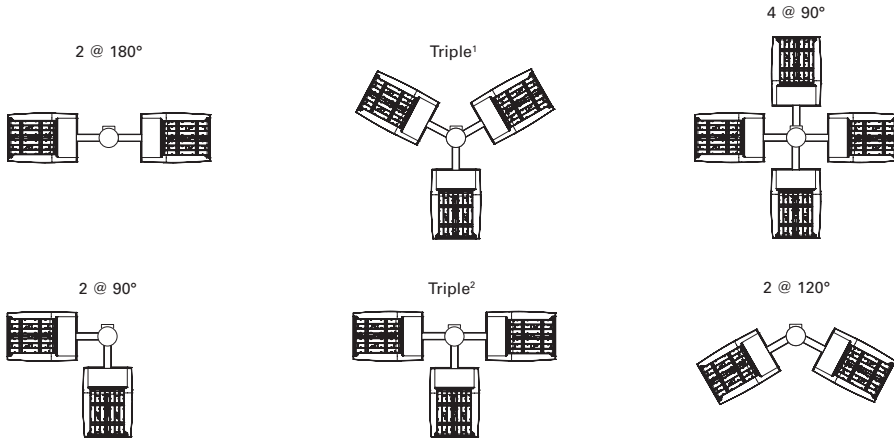
UL/cUL Wet Location Listed
ISO 9001
LM79 / LM80 Compliant
3G Vibration Rated
IP66 Rated

ENERGY DATA

Electronic LED Driver
>0.9 Power Factor
<20% Total Harmonic Distortion
120V-277V 50/60Hz
347V & 480V 60Hz
-40°C Min. Temperature
40°C Max. Temperature
50°C Max. Temperature (HA Option)

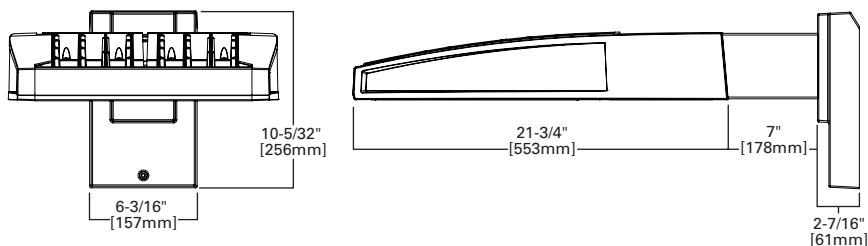
ARM MOUNTING REQUIREMENTS

Configuration	90° Apart	120° Apart
GLEON-AF-01	7" Arm (Standard)	7" Arm (Standard)
GLEON-AF-02	7" Arm (Standard)	7" Arm (Standard)
GLEON-AF-03	7" Arm (Standard)	7" Arm (Standard)
GLEON-AF-04	7" Arm (Standard)	7" Arm (Standard)
GLEON-AF-05	10" Extended Arm (Required)	7" Arm (Standard)
GLEON-AF-06	10" Extended Arm (Required)	7" Arm (Standard)
GLEON-AF-07	13" Extended Arm (Required)	13" Extended Arm (Required)
GLEON-AF-08	13" Extended Arm (Required)	13" Extended Arm (Required)
GLEON-AF-09	16" Extended Arm (Required)	16" Extended Arm (Required)
GLEON-AF-10	16" Extended Arm (Required)	16" Extended Arm (Required)

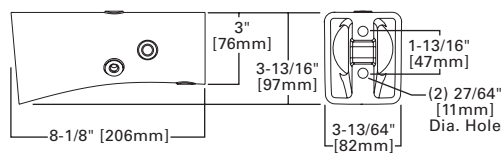


NOTES: 1 Round poles are 3 @ 120°. Square poles are 3 @ 90°. 2 Round poles are 3 @ 90°.

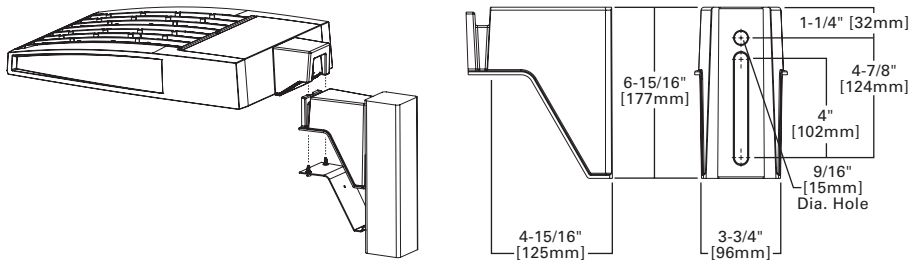
STANDARD WALL MOUNT



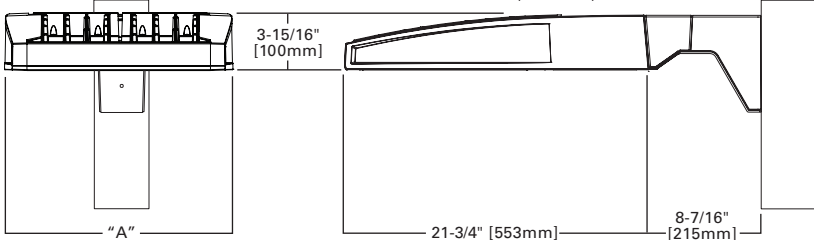
MAST ARM MOUNT



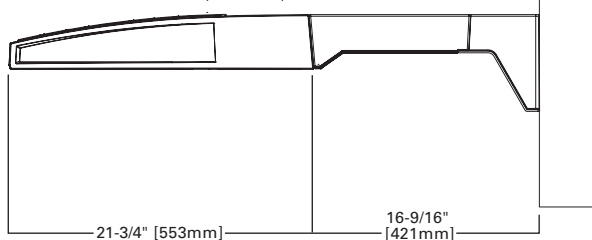
QUICK MOUNT ARM (INCLUDES FIXTURE ADAPTER)



QM Quick Mount Arm (Standard)



QMEA Quick Mount Arm (Extended)

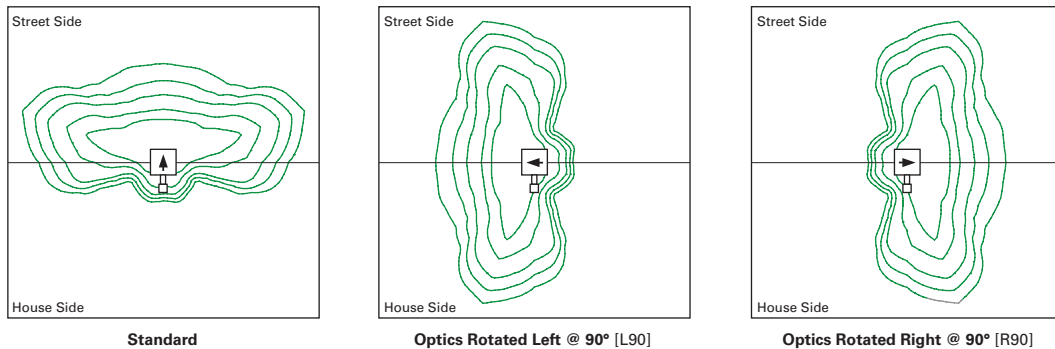


QUICK MOUNT ARM DATA

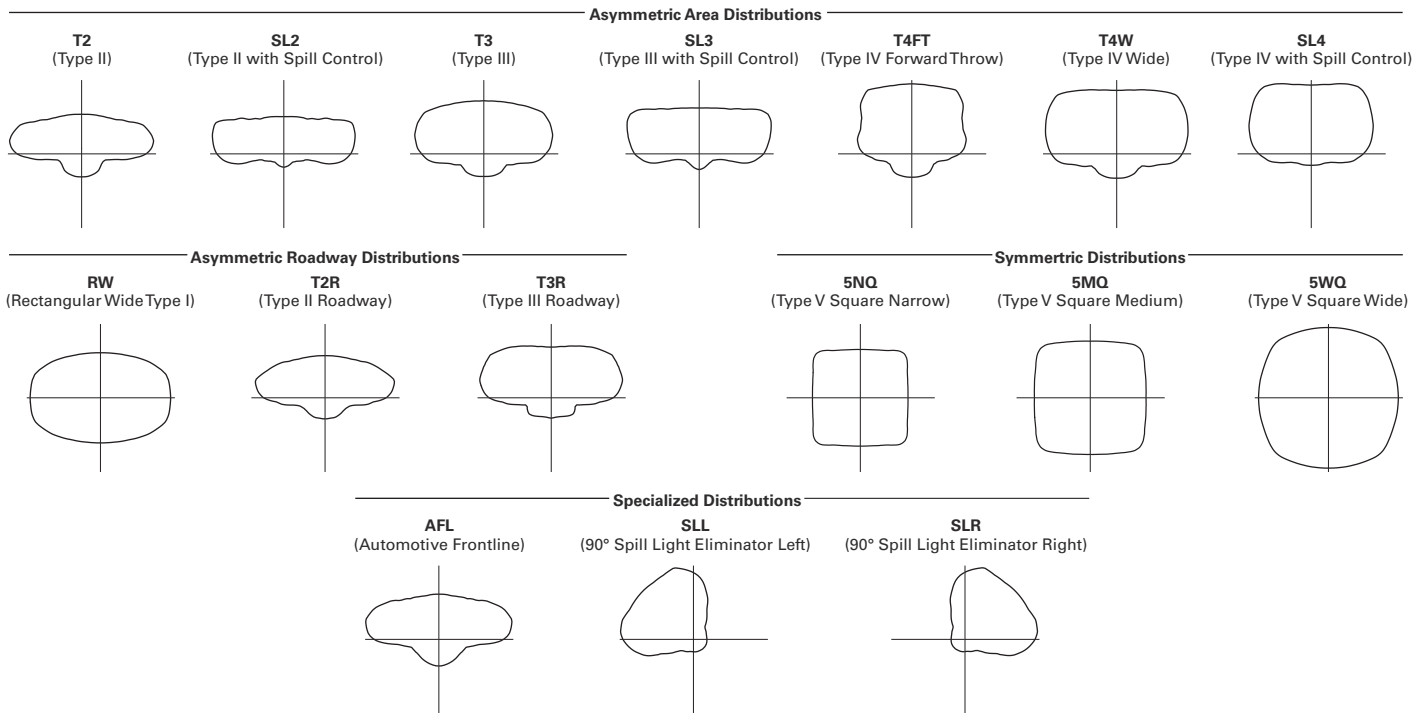
Number of Light Squares ^{1,2}	"A" Width	Weight with QM Arm (lbs.)	Weight with QMEA Arm (lbs.)	EPA (Sq. Ft.)
1-4	15-1/2" (394mm)	35 (15.91 kgs.)	38 (17.27 kgs.)	1.11
5-6 ³	21-5/8" (549mm)	46 (20.91 kgs.)	49 (22.27 kgs.)	
7-8	27-5/8" (702mm)	56 (25.45 kgs.)	59 (26.82 kgs.)	

NOTES: 1 QM option available with 1-8 light square configurations. 2 QMEA option available with 1-6 light square configurations. 3 QMEA arm to be used when mounting two fixtures at 90° on a single pole.

OPTIC ORIENTATION



OPTICAL DISTRIBUTIONS

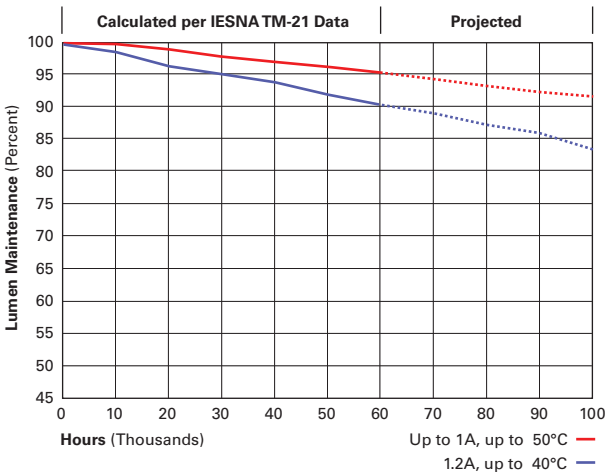


LUMEN MAINTENANCE

Drive Current	Ambient Temperature	TM-21 Lumen Maintenance (60,000 Hours)	Projected L70 (Hours)
Up to 1A	Up to 50°C	> 95%	416,000
1.2A	Up to 40°C	> 90%	205,000

LUMEN MULTIPLIER

Ambient Temperature	Lumen Multiplier
0°C	1.02
10°C	1.01
25°C	1.00
40°C	0.99
50°C	0.97



NOMINAL POWER LUMENS (1.2A)

Number of Light Squares	1	2	3	4	5	6	7	8	9	10	
Nominal Power (Watts)	67	129	191	258	320	382	448	511	575	640	
Input Current @ 120V (A)	0.58	1.16	1.78	2.31	2.94	3.56	4.09	4.71	5.34	5.87	
Input Current @ 208V (A)	0.33	0.63	0.93	1.27	1.57	1.87	2.22	2.52	2.8	3.14	
Input Current @ 240V (A)	0.29	0.55	0.80	1.10	1.35	1.61	1.93	2.18	2.41	2.71	
Input Current @ 277V (A)	0.25	0.48	0.70	0.96	1.18	1.39	1.69	1.90	2.09	2.36	
Input Current @ 347V (A)	0.20	0.39	0.57	0.78	0.96	1.15	1.36	1.54	1.72	1.92	
Input Current @ 480V (A)	0.15	0.30	0.43	0.60	0.73	0.85	1.03	1.16	1.28	1.45	
Optics											
T2	4000K/5000K Lumens	6,709	13,111	19,562	25,848	32,026	38,325	45,324	51,355	57,286	63,424
	3000K Lumens	5,939	11,606	17,316	22,881	28,349	33,925	40,121	45,459	50,710	56,143
	BUG Rating	B1-U0-G2	B2-U0-G2	B3-U0-G3	B3-U0-G4	B3-U0-G4	B3-U0-G5	B4-U0-G5	B4-U0-G5	B4-U0-G5	B4-U0-G5
T2R	4000K/5000K Lumens	7,122	13,919	20,769	27,442	34,000	40,687	48,117	54,519	60,816	67,333
	3000K Lumens	5,939	11,606	17,316	22,881	28,349	33,925	40,121	45,459	50,710	56,143
	BUG Rating	B1-U0-G1	B2-U0-G2	B2-U0-G3	B3-U0-G3	B3-U0-G4	B3-U0-G4	B3-U0-G5	B3-U0-G5	B4-U0-G5	B4-U0-G5
T3	4000K/5000K Lumens	6,838	13,363	19,939	26,346	32,642	39,062	46,196	52,343	58,388	64,646
	3000K Lumens	6,053	11,829	17,650	23,321	28,895	34,578	40,893	46,334	51,685	57,225
	BUG Rating	B1-U0-G2	B2-U0-G2	B3-U0-G3	B3-U0-G4	B3-U0-G4	B3-U0-G5	B4-U0-G5	B4-U0-G5	B4-U0-G5	B4-U0-G5
T3R	4000K/5000K Lumens	6,990	13,660	20,382	26,931	33,368	39,930	47,223	53,506	59,686	66,081
	3000K Lumens	6,188	12,092	18,042	23,839	29,537	35,346	41,802	47,364	52,834	58,495
	BUG Rating	B1-U0-G2	B2-U0-G3	B2-U0-G3	B3-U0-G4	B3-U0-G5	B3-U0-G5	B3-U0-G5	B3-U0-G5	B4-U0-G5	B4-U0-G5
T4FT	4000K/5000K Lumens	6,878	13,440	20,055	26,499	32,832	39,289	46,464	52,646	58,726	65,020
	3000K Lumens	6,088	11,897	17,753	23,457	29,063	34,779	41,130	46,602	51,984	57,556
	BUG Rating	B1-U0-G2	B2-U0-G3	B2-U0-G4	B3-U0-G4	B3-U0-G5	B3-U0-G5	B3-U0-G5	B4-U0-G5	B4-U0-G5	B4-U0-G5
T4W	4000K/5000K Lumens	6,789	13,267	19,795	26,156	32,408	38,781	45,864	51,967	57,968	64,180
	3000K Lumens	6,010	11,744	17,523	23,153	28,688	34,329	40,599	46,001	51,313	56,812
	BUG Rating	B1-U0-G2	B2-U0-G3	B3-U0-G4	B3-U0-G4	B3-U0-G5	B3-U0-G5	B4-U0-G5	B4-U0-G5	B4-U0-G5	B4-U0-G5
SL2	4000K/5000K Lumens	6,697	13,088	19,529	25,804	31,970	38,259	45,245	51,267	57,186	63,315
	3000K Lumens	5,928	11,585	17,287	22,842	28,300	33,867	40,051	45,382	50,621	56,046
	BUG Rating	B1-U0-G2	B2-U0-G3	B3-U0-G3	B3-U0-G4	B3-U0-G4	B3-U0-G5	B4-U0-G5	B4-U0-G5	B4-U0-G5	B4-U0-G5
SL3	4000K/5000K Lumens	6,837	13,361	19,936	26,342	32,639	39,057	46,189	52,336	58,380	64,636
	3000K Lumens	6,052	11,827	17,647	23,318	28,892	34,573	40,887	46,328	51,678	57,216
	BUG Rating	B1-U0-G2	B2-U0-G3	B2-U0-G4	B3-U0-G4	B3-U0-G5	B3-U0-G5	B3-U0-G5	B4-U0-G5	B4-U0-G5	B4-U0-G5
SL4	4000K/5000K Lumens	6,496	12,695	18,943	25,029	31,011	37,110	43,886	49,727	55,470	61,414
	3000K Lumens	5,750	11,238	16,768	22,156	27,451	32,850	38,848	44,018	49,102	54,364
	BUG Rating	B1-U0-G2	B1-U0-G3	B2-U0-G4	B2-U0-G4	B2-U0-G5	B3-U0-G5	B3-U0-G5	B3-U0-G5	B3-U0-G5	B3-U0-G5
5NQ	4000K/5000K Lumens	7,052	13,781	20,564	27,171	33,664	40,285	47,641	53,981	60,215	66,669
	3000K Lumens	6,242	12,199	18,203	24,052	29,799	35,660	42,172	47,784	53,302	59,015
	BUG Rating	B3-U0-G1	B3-U0-G2	B4-U0-G2	B4-U0-G2	B5-U0-G2	B5-U0-G3	B5-U0-G3	B5-U0-G4	B5-U0-G4	B5-U0-G4
5MQ	4000K/5000K Lumens	7,182	14,034	20,942	27,671	34,284	41,027	48,518	54,975	61,323	67,896
	3000K Lumens	6,358	12,423	18,538	24,494	30,348	36,317	42,948	48,664	54,283	60,102
	BUG Rating	B3-U0-G1	B4-U0-G2	B4-U0-G2	B5-U0-G3	B5-U0-G4	B5-U0-G4	B5-U0-G4	B5-U0-G5	B5-U0-G5	B5-U0-G5
5WQ	4000K/5000K Lumens	7,201	14,073	20,998	27,744	34,375	41,136	48,648	55,121	61,487	68,077
	3000K Lumens	6,374	12,457	18,587	24,559	30,429	36,414	43,063	48,793	54,428	60,262
	BUG Rating	B3-U0-G2	B4-U0-G2	B5-U0-G3	B5-U0-G4	B5-U0-G4	B5-U0-G4	B5-U0-G5	B5-U0-G5	B5-U0-G5	B5-U0-G5
SLL/SLR	4000K/5000K Lumens	6,009	11,741	17,519	23,148	28,681	34,321	40,589	45,990	51,301	56,798
	3000K Lumens	5,319	10,393	15,508	20,491	25,388	30,381	35,929	40,710	45,412	50,278
	BUG Rating	B1-U0-G2	B2-U0-G3	B2-U0-G3	B3-U0-G4	B3-U0-G4	B3-U0-G5	B3-U0-G5	B3-U0-G5	B3-U0-G5	B4-U0-G5
RW	4000K/5000K Lumens	6,989	13,657	20,378	26,925	33,360	39,921	47,211	53,494	59,672	66,066
	3000K Lumens	6,187	12,089	18,039	23,834	29,530	35,338	41,791	47,353	52,822	58,482
	BUG Rating	B3-U0-G1	B3-U0-G2	B4-U0-G2	B4-U0-G2	B5-U0-G3	B5-U0-G3	B5-U0-G4	B5-U0-G4	B5-U0-G4	B5-U0-G4
AFL	4000K/5000K Lumens	7,014	13,706	20,452	27,023	33,481	40,066	47,383	53,688	59,888	66,306
	3000K Lumens	6,209	12,133	18,104	23,921	29,637	35,466	41,943	47,525	53,013	58,694
	BUG Rating	B1-U0-G1	B2-U0-G2	B2-U0-G2	B3-U0-G3	B3-U0-G3	B3-U0-G3	B3-U0-G3	B3-U0-G4	B4-U0-G4	B4-U0-G4

* Nominal data for 70 CRI.

NOMINAL POWER LUMENS (1A)

Number of Light Squares	1	2	3	4	5	6	7	8	9	10	
Nominal Power (Watts)	59	113	166	225	279	333	391	445	501	558	
Input Current @ 120V (A)	0.51	1.02	1.53	2.03	2.55	3.06	3.56	4.08	4.6	5.07	
Input Current @ 208V (A)	0.29	0.56	0.82	1.11	1.37	1.64	1.93	2.19	2.46	2.75	
Input Current @ 240V (A)	0.26	0.48	0.71	0.96	1.19	1.41	1.67	1.89	2.12	2.39	
Input Current @ 277V (A)	0.23	0.42	0.61	0.83	1.03	1.23	1.45	1.65	1.84	2.09	
Input Current @ 347V (A)	0.17	0.32	0.50	0.64	0.82	1.00	1.14	1.32	1.50	1.68	
Input Current @ 480V (A)	0.14	0.24	0.37	0.48	0.61	0.75	0.91	0.99	1.12	1.28	
Optics											
T2	4000K/5000K Lumens	6,116	11,951	17,833	23,563	29,195	34,937	41,317	46,814	52,221	57,817
	3000K Lumens	5,414	10,579	15,786	20,858	25,843	30,926	36,574	41,440	46,226	51,180
	BUG Rating	B1-U0-G2	B2-U0-G2	B3-U0-G3	B3-U0-G3	B3-U0-G4	B3-U0-G4	B4-U0-G5	B4-U0-G5	B4-U0-G5	B4-U0-G5
T2R	4000K/5000K Lumens	6,493	12,688	18,932	25,015	30,994	37,090	43,863	49,699	55,439	61,380
	3000K Lumens	5,748	11,231	16,759	22,143	27,436	32,832	38,828	43,994	49,075	54,334
	BUG Rating	B1-U0-G1	B2-U0-G2	B2-U0-G2	B3-U0-G3	B3-U0-G4	B3-U0-G4	B3-U0-G4	B3-U0-G5	B4-U0-G5	B4-U0-G5
T3	4000K/5000K Lumens	6,234	12,181	18,176	24,017	29,756	35,609	42,111	47,715	53,225	58,930
	3000K Lumens	5,518	10,783	16,089	21,260	26,340	31,521	37,277	42,237	47,115	52,165
	BUG Rating	B1-U0-G2	B2-U0-G2	B3-U0-G3	B3-U0-G4	B3-U0-G4	B3-U0-G5	B4-U0-G5	B4-U0-G5	B4-U0-G5	B4-U0-G5
T3R	4000K/5000K Lumens	6,372	12,453	18,580	24,550	30,418	36,400	43,048	48,776	54,409	60,239
	3000K Lumens	5,640	11,023	16,447	21,732	26,926	32,221	38,106	43,177	48,163	53,324
	BUG Rating	B1-U0-G2	B2-U0-G2	B2-U0-G3	B3-U0-G4	B3-U0-G4	B3-U0-G5	B3-U0-G5	B3-U0-G5	B3-U0-G5	B4-U0-G5
T4FT	4000K/5000K Lumens	6,270	12,252	18,282	24,156	29,929	35,815	42,356	47,992	53,534	59,271
	3000K Lumens	5,550	10,845	16,183	21,383	26,493	31,703	37,494	42,483	47,388	52,467
	BUG Rating	B1-U0-G2	B2-U0-G2	B2-U0-G3	B3-U0-G4	B3-U0-G5	B3-U0-G5	B3-U0-G5	B3-U0-G5	B4-U0-G5	B4-U0-G5
T4W	4000K/5000K Lumens	6,189	12,094	18,045	23,844	29,543	35,352	41,809	47,372	52,843	58,506
	3000K Lumens	5,479	10,706	15,973	21,107	26,151	31,294	37,009	41,934	46,777	51,790
	BUG Rating	B1-U0-G2	B2-U0-G2	B3-U0-G3	B3-U0-G4	B3-U0-G5	B3-U0-G5	B4-U0-G5	B4-U0-G5	B4-U0-G5	B4-U0-G5
SL2	4000K/5000K Lumens	6,105	11,931	17,803	23,522	29,144	34,877	41,245	46,734	52,130	57,717
	3000K Lumens	5,404	10,561	15,759	20,822	25,798	30,873	36,510	41,369	46,145	51,091
	BUG Rating	B1-U0-G2	B2-U0-G3	B3-U0-G3	B3-U0-G4	B3-U0-G4	B3-U0-G5	B4-U0-G5	B4-U0-G5	B4-U0-G5	B4-U0-G5
SL3	4000K/5000K Lumens	6,233	12,180	18,174	24,013	29,753	35,604	42,106	47,708	53,218	58,921
	3000K Lumens	5,517	10,782	16,088	21,256	26,337	31,517	37,272	42,231	47,109	52,157
	BUG Rating	B1-U0-G2	B2-U0-G3	B2-U0-G3	B3-U0-G4	B3-U0-G4	B3-U0-G5	B3-U0-G5	B3-U0-G5	B4-U0-G5	B4-U0-G5
SL4	4000K/5000K Lumens	5,922	11,572	17,268	22,816	28,269	33,829	40,006	45,330	50,566	55,984
	3000K Lumens	5,242	10,244	15,286	20,197	25,024	29,945	35,413	40,126	44,761	49,557
	BUG Rating	B1-U0-G2	B1-U0-G3	B2-U0-G3	B2-U0-G4	B2-U0-G5	B3-U0-G5	B3-U0-G5	B3-U0-G5	B3-U0-G5	B3-U0-G5
5NQ	4000K/5000K Lumens	6,429	12,563	18,746	24,768	30,688	36,723	43,429	49,208	54,891	60,775
	3000K Lumens	5,691	11,121	16,594	21,925	27,165	32,507	38,443	43,559	48,590	53,798
	BUG Rating	B2-U0-G1	B3-U0-G2	B4-U0-G2	B4-U0-G2	B5-U0-G2	B5-U0-G3	B5-U0-G3	B5-U0-G3	B5-U0-G4	B5-U0-G4
5MQ	4000K/5000K Lumens	6,547	12,794	19,090	25,224	31,253	37,400	44,228	50,114	55,902	61,893
	3000K Lumens	5,795	11,325	16,898	22,328	27,665	33,106	39,151	44,361	49,484	54,788
	BUG Rating	B3-U0-G1	B4-U0-G2	B4-U0-G2	B5-U0-G3	B5-U0-G3	B5-U0-G4	B5-U0-G4	B5-U0-G4	B5-U0-G5	B5-U0-G5
5WQ	4000K/5000K Lumens	6,564	12,828	19,141	25,291	31,336	37,499	44,347	50,248	56,051	62,058
	3000K Lumens	5,810	11,355	16,944	22,388	27,739	33,194	39,256	44,480	49,616	54,934
	BUG Rating	B3-U0-G2	B4-U0-G2	B5-U0-G3	B5-U0-G3	B5-U0-G4	B5-U0-G4	B5-U0-G5	B5-U0-G5	B5-U0-G5	B5-U0-G5
SL/SLR	4000K/5000K Lumens	5,478	10,703	15,970	21,102	26,145	31,286	37,001	41,924	46,765	51,777
	3000K Lumens	4,849	9,474	14,137	18,679	23,144	27,694	32,753	37,111	41,396	45,833
	BUG Rating	B1-U0-G2	B1-U0-G3	B2-U0-G3	B2-U0-G4	B3-U0-G4	B3-U0-G5	B3-U0-G5	B3-U0-G5	B3-U0-G5	B3-U0-G5
RW	4000K/5000K Lumens	6,371	12,449	18,576	24,544	30,411	36,392	43,037	48,764	54,396	60,225
	3000K Lumens	5,640	11,020	16,443	21,726	26,920	32,214	38,096	43,166	48,151	53,311
	BUG Rating	B3-U0-G1	B3-U0-G2	B4-U0-G2	B4-U0-G2	B5-U0-G3	B5-U0-G3	B5-U0-G3	B5-U0-G4	B5-U0-G4	B5-U0-G4
AFL	4000K/5000K Lumens	6,394	12,494	18,644	24,634	30,521	36,524	43,194	48,942	54,593	60,444
	3000K Lumens	5,660	11,060	16,504	21,806	27,017	32,331	38,235	43,323	48,326	53,505
	BUG Rating	B1-U0-G1	B2-U0-G2	B2-U0-G2	B3-U0-G2	B3-U0-G3	B3-U0-G3	B3-U0-G3	B3-U0-G3	B4-U0-G4	B4-U0-G4

* Nominal data for 70 CRI.

NOMINAL POWER LUMENS (800MA)

Number of Light Squares	1	2	3	4	5	6	7	8	9	10	
Nominal Power (Watts)	44	85	124	171	210	249	295	334	374	419	
Input Current @ 120V (A)	0.39	0.77	1.13	1.54	1.90	2.26	2.67	3.03	3.39	3.80	
Input Current @ 208V (A)	0.22	0.44	0.62	0.88	1.06	1.24	1.50	1.68	1.87	2.12	
Input Current @ 240V (A)	0.19	0.38	0.54	0.76	0.92	1.08	1.30	1.46	1.62	1.84	
Input Current @ 277V (A)	0.17	0.36	0.47	0.72	0.83	0.95	1.19	1.31	1.42	1.67	
Input Current @ 347V (A)	0.15	0.24	0.38	0.49	0.63	0.77	0.87	1.01	1.15	1.52	
Input Current @ 480V (A)	0.11	0.18	0.29	0.37	0.48	0.59	0.66	0.77	0.88	0.96	
Optics											
T2	4000K/5000K Lumens	4,941	9,656	14,408	19,038	23,588	28,227	33,382	37,823	42,191	46,713
	3000K Lumens	4,374	8,547	12,754	16,852	20,880	24,987	29,550	33,481	37,347	41,350
	BUG Rating	B1-U0-G1	B2-U0-G2	B2-U0-G2	B3-U0-G3	B3-U0-G3	B3-U0-G4	B3-U0-G4	B3-U0-G4	B4-U0-G5	B4-U0-G5
T2R	4000K/5000K Lumens	5,246	10,251	15,296	20,211	25,041	29,966	35,439	40,154	44,791	49,592
	3000K Lumens	4,644	9,074	13,540	17,891	22,166	26,526	31,371	35,544	39,649	43,899
	BUG Rating	B1-U0-G1	B1-U0-G2	B2-U0-G2	B2-U0-G3	B3-U0-G3	B3-U0-G4	B3-U0-G4	B3-U0-G4	B3-U0-G4	B3-U0-G5
T3	4000K/5000K Lumens	5,037	9,842	14,685	19,404	24,041	28,770	34,024	38,551	43,003	47,612
	3000K Lumens	4,459	8,712	12,999	17,176	21,281	25,467	30,118	34,125	38,066	42,146
	BUG Rating	B1-U0-G1	B2-U0-G2	B2-U0-G3	B3-U0-G3	B3-U0-G4	B3-U0-G4	B3-U0-G4	B3-U0-G5	B4-U0-G5	B4-U0-G5
T3R	4000K/5000K Lumens	5,148	10,061	15,011	19,835	24,576	29,409	34,780	39,408	43,959	48,669
	3000K Lumens	4,557	8,906	13,288	17,558	21,755	26,033	30,787	34,884	38,913	43,082
	BUG Rating	B1-U0-G2	B1-U0-G2	B2-U0-G3	B2-U0-G3	B3-U0-G4	B3-U0-G4	B3-U0-G5	B3-U0-G5	B3-U0-G5	B3-U0-G5
T4FT	4000K/5000K Lumens	5,066	9,899	14,770	19,516	24,181	28,936	34,221	38,774	43,252	47,888
	3000K Lumens	4,484	8,763	13,074	17,276	21,405	25,614	30,292	34,323	38,287	42,390
	BUG Rating	B1-U0-G2	B1-U0-G2	B2-U0-G3	B2-U0-G4	B3-U0-G4	B3-U0-G4	B3-U0-G5	B3-U0-G5	B3-U0-G5	B3-U0-G5
T4W	4000K/5000K Lumens	5,000	9,771	14,579	19,264	23,869	28,562	33,779	38,274	42,694	47,269
	3000K Lumens	4,426	8,649	12,905	17,052	21,129	25,283	29,901	33,880	37,793	41,843
	BUG Rating	B1-U0-G2	B2-U0-G2	B2-U0-G3	B3-U0-G4	B3-U0-G4	B3-U0-G4	B3-U0-G5	B3-U0-G5	B4-U0-G5	B4-U0-G5
SL2	4000K/5000K Lumens	4,933	9,639	14,383	19,005	23,547	28,178	33,324	37,758	42,118	46,632
	3000K Lumens	4,367	8,532	12,732	16,823	20,844	24,943	29,498	33,423	37,283	41,279
	BUG Rating	B1-U0-G2	B2-U0-G2	B2-U0-G3	B3-U0-G3	B3-U0-G4	B3-U0-G4	B3-U0-G4	B3-U0-G5	B4-U0-G5	B4-U0-G5
SL3	4000K/5000K Lumens	5,036	9,841	14,683	19,401	24,039	28,766	34,019	38,546	42,997	47,605
	3000K Lumens	4,458	8,711	12,997	17,174	21,279	25,464	30,114	34,121	38,061	42,140
	BUG Rating	B1-U0-G2	B1-U0-G2	B2-U0-G3	B2-U0-G3	B3-U0-G4	B3-U0-G4	B3-U0-G5	B3-U0-G5	B3-U0-G5	B3-U0-G5
SL4	4000K/5000K Lumens	4,784	9,350	13,951	18,434	22,840	27,332	32,323	36,624	40,854	45,232
	3000K Lumens	4,235	8,277	12,349	16,318	20,218	24,194	28,612	32,420	36,164	40,039
	BUG Rating	B1-U0-G2	B1-U0-G3	B1-U0-G3	B2-U0-G4	B2-U0-G4	B2-U0-G5	B2-U0-G5	B3-U0-G5	B3-U0-G5	B3-U0-G5
5NQ	4000K/5000K Lumens	5,194	10,150	15,145	20,011	24,794	29,670	35,088	39,757	44,349	49,102
	3000K Lumens	4,598	8,985	13,406	17,714	21,948	26,264	31,060	35,193	39,258	43,465
	BUG Rating	B2-U0-G1	B3-U0-G1	B3-U0-G2	B4-U0-G2	B4-U0-G2	B5-U0-G2	B5-U0-G3	B5-U0-G3	B5-U0-G3	B5-U0-G3
5MQ	4000K/5000K Lumens	5,290	10,337	15,424	20,380	25,250	30,217	35,734	40,489	45,165	50,006
	3000K Lumens	4,683	9,150	13,653	18,040	22,351	26,748	31,632	35,841	39,980	44,265
	BUG Rating	B3-U0-G1	B3-U0-G2	B4-U0-G2	B4-U0-G2	B5-U0-G3	B5-U0-G3	B5-U0-G4	B5-U0-G4	B5-U0-G4	B5-U0-G4
5WQ	4000K/5000K Lumens	5,304	10,365	15,465	20,434	25,318	30,297	35,830	40,597	45,286	50,139
	3000K Lumens	4,695	9,175	13,690	18,088	22,411	26,819	31,717	35,936	40,087	44,383
	BUG Rating	B3-U0-G1	B4-U0-G2	B4-U0-G2	B5-U0-G3	B5-U0-G3	B5-U0-G4	B5-U0-G4	B5-U0-G4	B5-U0-G5	B5-U0-G5
SLL/SLR	4000K/5000K Lumens	4,426	8,648	12,903	17,049	21,124	25,278	29,894	33,872	37,784	41,832
	3000K Lumens	3,918	7,655	11,422	15,092	18,699	22,376	26,462	29,983	33,446	37,030
	BUG Rating	B1-U0-G2	B1-U0-G2	B2-U0-G3	B2-U0-G3	B2-U0-G4	B3-U0-G4	B3-U0-G5	B3-U0-G5	B3-U0-G5	B3-U0-G5
RW	4000K/5000K Lumens	5,147	10,058	15,009	19,830	24,570	29,402	34,771	39,399	43,949	48,658
	3000K Lumens	4,556	8,903	13,286	17,554	21,749	26,027	30,779	34,876	38,904	43,072
	BUG Rating	B2-U0-G1	B3-U0-G1	B3-U0-G2	B4-U0-G2	B4-U0-G2	B4-U0-G2	B5-U0-G3	B5-U0-G3	B5-U0-G3	B5-U0-G4
AFL	4000K/5000K Lumens	5,166	10,095	15,063	19,903	24,659	29,509	34,898	39,542	44,108	48,835
	3000K Lumens	4,573	8,936	13,334	17,618	21,828	26,121	30,892	35,003	39,044	43,229
	BUG Rating	B1-U0-G1	B1-U0-G1	B2-U0-G2	B2-U0-G2	B3-U0-G2	B3-U0-G3	B3-U0-G3	B3-U0-G3	B3-U0-G3	B3-U0-G3

* Nominal data for 70 CRI.

NOMINAL POWER LUMENS (600MA)

Number of Light Squares	1	2	3	4	5	6	7	8	9	10	
Nominal Power (Watts)	34	66	96	129	162	193	226	257	290	323	
Input Current @ 120V (A)	0.30	0.58	0.86	1.16	1.44	1.73	2.03	2.33	2.59	2.89	
Input Current @ 208V (A)	0.17	0.34	0.49	0.65	0.84	0.99	1.14	1.30	1.48	1.63	
Input Current @ 240V (A)	0.15	0.30	0.43	0.56	0.74	0.87	1.00	1.13	1.30	1.43	
Input Current @ 277V (A)	0.14	0.28	0.41	0.52	0.69	0.81	0.93	1.04	1.22	1.33	
Input Current @ 347V (A)	0.11	0.19	0.30	0.39	0.49	0.60	0.69	0.77	0.90	0.99	
Input Current @ 480V (A)	0.08	0.15	0.24	0.30	0.38	0.48	0.53	0.59	0.71	0.77	
Optics											
T2	4000K/5000K Lumens	4,029	7,874	11,749	15,525	19,235	23,019	27,222	30,844	34,406	38,093
	3000K Lumens	3,566	6,970	10,400	13,743	17,027	20,376	24,097	27,303	30,456	33,720
	BUG Rating	B1-U0-G1	B1-U0-G2	B2-U0-G2	B2-U0-G2	B3-U0-G3	B3-U0-G3	B3-U0-G4	B3-U0-G4	B3-U0-G4	B3-U0-G4
T2R	4000K/5000K Lumens	4,278	8,360	12,474	16,482	20,421	24,437	28,900	32,745	36,527	40,441
	3000K Lumens	3,787	7,400	11,042	14,590	18,077	21,632	25,582	28,986	32,334	35,798
	BUG Rating	B1-U0-G1	B1-U0-G2	B2-U0-G2	B2-U0-G2	B2-U0-G3	B3-U0-G3	B3-U0-G3	B3-U0-G4	B3-U0-G4	B3-U0-G4
T3	4000K/5000K Lumens	4,107	8,026	11,976	15,824	19,605	23,461	27,746	31,438	35,068	38,827
	3000K Lumens	3,636	7,105	10,601	14,007	17,354	20,768	24,561	27,829	31,042	34,370
	BUG Rating	B1-U0-G1	B1-U0-G2	B2-U0-G2	B2-U0-G3	B3-U0-G3	B3-U0-G4	B3-U0-G4	B3-U0-G4	B3-U0-G5	B3-U0-G5
T3R	4000K/5000K Lumens	4,198	8,205	12,242	16,175	20,041	23,982	28,363	32,137	35,848	39,689
	3000K Lumens	3,716	7,263	10,837	14,318	17,740	21,229	25,107	28,448	31,733	35,133
	BUG Rating	B1-U0-G1	B1-U0-G2	B2-U0-G2	B2-U0-G3	B2-U0-G3	B3-U0-G4	B3-U0-G4	B3-U0-G4	B3-U0-G5	B3-U0-G5
T4FT	4000K/5000K Lumens	4,131	8,072	12,045	15,915	19,719	23,597	27,907	31,620	35,272	39,052
	3000K Lumens	3,657	7,145	10,662	14,088	17,455	20,888	24,703	27,990	31,223	34,569
	BUG Rating	B1-U0-G1	B1-U0-G2	B2-U0-G2	B2-U0-G3	B2-U0-G4	B3-U0-G4	B3-U0-G4	B3-U0-G5	B3-U0-G5	B3-U0-G5
T4W	4000K/5000K Lumens	4,077	7,968	11,889	15,710	19,465	23,292	27,546	31,212	34,816	38,547
	3000K Lumens	3,609	7,053	10,524	13,906	17,230	20,618	24,384	27,629	30,819	34,122
	BUG Rating	B1-U0-G1	B1-U0-G2	B2-U0-G2	B2-U0-G3	B3-U0-G4	B3-U0-G4	B3-U0-G4	B3-U0-G5	B3-U0-G5	B3-U0-G5
SL2	4000K/5000K Lumens	4,022	7,861	11,729	15,498	19,202	22,979	27,175	30,791	34,347	38,028
	3000K Lumens	3,560	6,959	10,383	13,719	16,998	20,341	24,055	27,256	30,404	33,662
	BUG Rating	B1-U0-G1	B1-U0-G2	B2-U0-G3	B2-U0-G3	B3-U0-G3	B3-U0-G4	B3-U0-G4	B3-U0-G4	B3-U0-G5	B3-U0-G5
SL3	4000K/5000K Lumens	4,106	8,025	11,974	15,821	19,603	23,458	27,742	31,433	35,064	38,821
	3000K Lumens	3,635	7,104	10,599	14,005	17,353	20,765	24,557	27,824	31,039	34,364
	BUG Rating	B1-U0-G1	B1-U0-G2	B2-U0-G3	B2-U0-G3	B2-U0-G3	B3-U0-G4	B3-U0-G4	B3-U0-G4	B3-U0-G5	B3-U0-G5
SL4	4000K/5000K Lumens	3,902	7,624	11,377	15,033	18,626	22,289	26,359	29,867	33,316	36,886
	3000K Lumens	3,454	6,749	10,071	13,307	16,488	19,730	23,333	26,438	29,491	32,651
	BUG Rating	B1-U0-G2	B1-U0-G2	B1-U0-G3	B1-U0-G3	B2-U0-G4	B2-U0-G4	B2-U0-G4	B2-U0-G5	B3-U0-G5	B3-U0-G5
5NQ	4000K/5000K Lumens	4,236	8,277	12,351	16,319	20,219	24,196	28,614	32,422	36,166	40,042
	3000K Lumens	3,750	7,327	10,933	14,446	17,898	21,418	25,329	28,700	32,014	35,445
	BUG Rating	B2-U0-G1	B3-U0-G1	B3-U0-G2	B3-U0-G2	B4-U0-G2	B4-U0-G2	B4-U0-G2	B5-U0-G2	B5-U0-G3	B5-U0-G3
5MQ	4000K/5000K Lumens	4,314	8,429	12,578	16,619	20,591	24,641	29,141	33,019	36,832	40,779
	3000K Lumens	3,819	7,461	11,134	14,711	18,227	21,812	25,796	29,228	32,604	36,098
	BUG Rating	B3-U0-G1	B3-U0-G2	B4-U0-G2	B4-U0-G2	B4-U0-G2	B5-U0-G3	B5-U0-G3	B5-U0-G4	B5-U0-G4	B5-U0-G4
5WQ	4000K/5000K Lumens	4,325	8,452	12,611	16,664	20,646	24,707	29,219	33,106	36,930	40,888
	3000K Lumens	3,828	7,482	11,163	14,751	18,276	21,871	25,865	29,305	32,690	36,194
	BUG Rating	B3-U0-G1	B3-U0-G2	B4-U0-G2	B4-U0-G2	B5-U0-G3	B5-U0-G3	B5-U0-G4	B5-U0-G4	B5-U0-G4	B5-U0-G4
SLL/SLR	4000K/5000K Lumens	3,609	7,052	10,522	13,903	17,226	20,613	24,378	27,622	30,812	34,114
	3000K Lumens	3,195	6,242	9,314	12,307	15,248	18,247	21,579	24,451	27,275	30,198
	BUG Rating	B1-U0-G1	B1-U0-G2	B1-U0-G3	B2-U0-G3	B2-U0-G3	B2-U0-G4	B3-U0-G4	B3-U0-G4	B3-U0-G5	B3-U0-G5
RW	4000K/5000K Lumens	4,197	8,202	12,239	16,171	20,036	23,977	28,356	32,129	35,839	39,680
	3000K Lumens	3,715	7,260	10,834	14,315	17,736	21,224	25,101	28,441	31,725	35,125
	BUG Rating	B2-U0-G1	B3-U0-G1	B3-U0-G2	B4-U0-G2	B4-U0-G2	B4-U0-G2	B4-U0-G2	B5-U0-G3	B5-U0-G3	B5-U0-G3
AFL	4000K/5000K Lumens	4,213	8,232	12,284	16,230	20,109	24,064	28,459	32,246	35,969	39,824
	3000K Lumens	3,729	7,287	10,874	14,367	17,800	21,301	25,192	28,544	31,840	35,252
	BUG Rating	B1-U0-G1	B1-U0-G1	B2-U0-G2	B2-U0-G2	B2-U0-G2	B3-U0-G2	B3-U0-G3	B3-U0-G3	B3-U0-G3	B3-U0-G3

* Nominal data for 70 CRI.

CONTROL OPTIONS

0-10V (DIM)

This fixture is offered standard with 0-10V dimming driver(s). The DIM option provides 0-10V dimming wire leads for use with a lighting control panel or other control method.

Photocontrol (P, R and PER7)

Optional button-type photocontrol (P) and photocontrol receptacles (R and PER7) provide a flexible solution to enable “dusk-to-dawn” lighting by sensing light levels. Advanced control systems compatible with NEMA 7-pin standards can be utilized with the PER7 receptacle.

After Hours Dim (AHD)

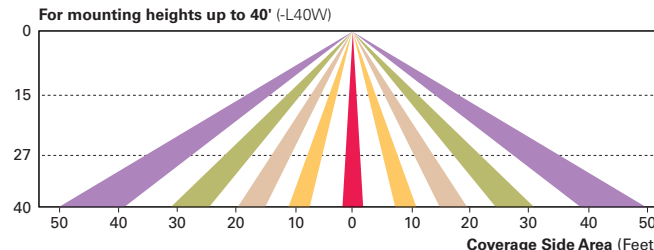
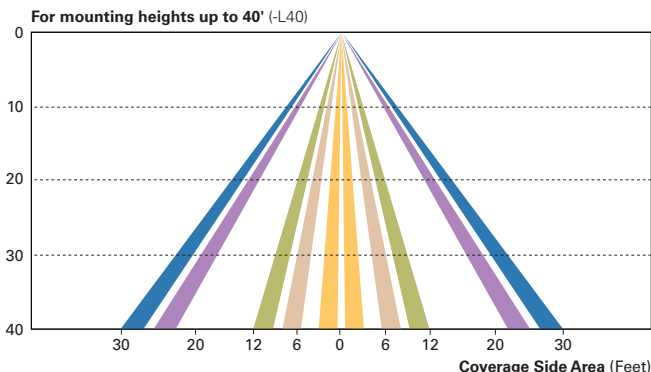
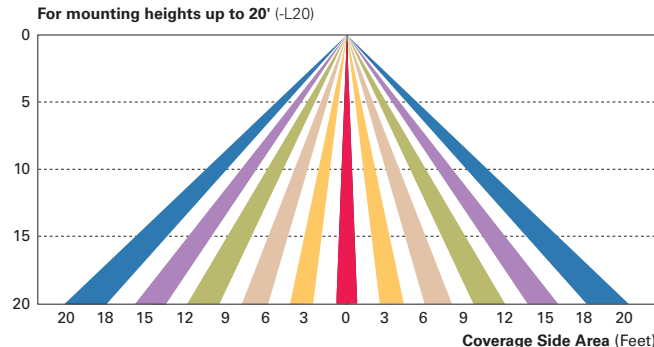
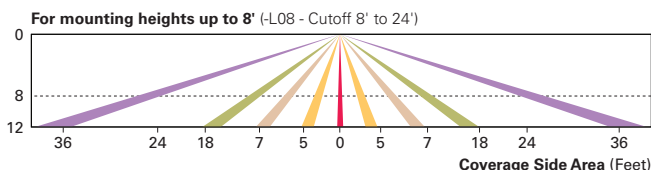
This feature allows photocontrol-enabled luminaires to achieve additional energy savings by dimming during scheduled portions of the night. The dimming profile will automatically take effect after a “dusk-to-dawn” period has been calculated from the photocontrol input. Specify the desired dimming profile for a simple, factory-shipped dimming solution requiring no external control wiring. Reference the After Hours Dim supplemental guide for additional information.

Dimming Occupancy Sensor (MS/DIM-LXX, MS/X-LXX and MS-LXX)

These sensors are factory installed in the luminaire housing. When the MS/DIM-LXX sensor option is selected, the occupancy sensor is connected to a dimming driver and the entire luminaire dims when there is no activity detected. When activity is detected, the luminaire returns to full light output. The MS/DIM sensor is factory preset to dim down to approximately 50 percent power with a time delay of five minutes. The MS-LXX sensor is factory preset to turn the luminaire off after five minutes of no activity. The MS/X-LXX is also preset for five minutes and only controls the specified number of light engines to maintain steady output from the remaining light engines.

These occupancy sensors includes an integral photocell that can be activated with the FSIR-100 accessory for “dusk-to-dawn” control or daylight harvesting - the factory preset is OFF. The FSIR-100 is a wireless tool utilized for changing the dimming level, time delay, sensitivity and other parameters.

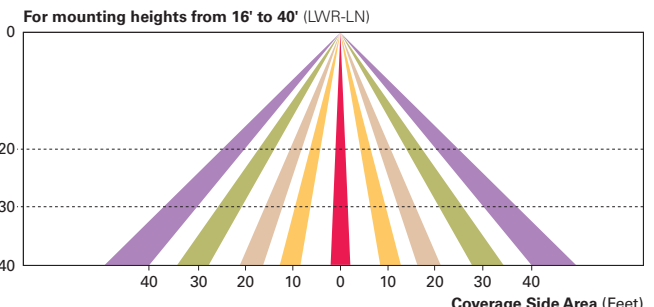
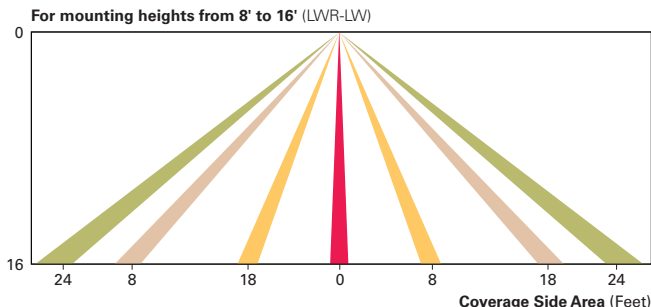
A variety of sensor lens are available to optimize the coverage pattern for mounting heights from 8’-40’.



LumaWatt Wireless Control and Monitoring System (LWR-LW and LWR-LN)

The LumaWatt system is a peer-to-peer wireless network of luminaire-integral sensors for any sized project. Each sensor is capable of motion and photo sensing, metering power consumption and wireless communication. The end-user can securely create and manage sensor profiles with browser-based management software. The software will automatically broadcast to the sensors via wireless gateways for zone-based and individual luminaire control. The LumaWatt software provides smart building solutions by utilizing the sensor to provide easy-to-use dashboard and analytic capabilities such as improved energy savings, traffic flow analysis, building management software integration and more.

For additional details, refer to the LumaWatt product guides.



ORDERING INFORMATION

Sample Number: GLEON-AF-04-LED-E1-T3-GM-QM

Product Family ^{1,2}	Light Engine	Number of Light Squares ³	Lamp Type	Voltage	Distribution	Color	Mounting
GLEON=Galleon	AF=1A Drive Current	01=1 02=2 03=3 04=4 05=5 06=6 07=7 ⁴ 08=8 ⁴ 09=9 ⁵ 10=10 ⁵	LED=Solid State Light Emitting Diodes	E1=120-277V 347=347V ⁶ 480=480V ^{6,7}	T2=Type II T2R=Type II Roadway T3=Type III T3R=Type III Roadway T4FT=Type IV Forward Throw T4W=Type IV Wide 5N0=Type V Narrow 5M0=Type V Square Medium 5W0=Type V Square Wide SL2=Type II w/Spill Control SL3=Type III w/Spill Control SL4=Type IV w/Spill Control SLL=90° Spill Light Eliminator Left SLR=90° Spill Light Eliminator Right RW=Rectangular Wide Type I AFL=Automotive Frontline	AP=Grey BZ=Bronze BK=Black DP=Dark Platinum GM=Graphite Metallic WH=White	[Blank]=Arm for Round or Square Pole EA=Extended Arm ⁸ MA=Mast Arm Adapter ⁹ WM=Wall Mount QM=Quick Mount Arm (Standard Length) ¹⁰ QMEA=Quick Mount Arm (Extended Length) ¹¹
Options (Add as Suffix)					Accessories (Order Separately)		
<p>7030=70 CRI 3000K ¹² 8030=80 CRI 3000K ¹³ 7050=70 CRI 5000K ¹² 7060=70 CRI 6000K ¹² 600=Drive Current Factory Set to Nominal 600mA ¹⁴ 800=Drive Current Factory Set to Nominal 800mA ¹⁴ 1200=Drive Current Factory Set to Nominal 1200mA ^{14,15} F=Single Fuse (120, 277 or 347V. Must Specify Voltage) FF=Double Fuse (208, 240 or 480V. Must Specify Voltage) 2L=Two Circuits ^{16,17} DIM=External 0-10V Dimming Leads P=Button Type Photocontrol (120, 208, 240 or 277V. Must Specify Voltage) PER7=NEMA 7-PIN Twistlock Photocontrol Receptacle R=NEMA Twistlock Photocontrol Receptacle AHD145=After Hours Dim, 5 Hours ¹⁸ AHD245=After Hours Dim, 6 Hours ¹⁸ AHD255=After Hours Dim, 7 Hours ¹⁸ AHD355=After Hours Dim, 8 Hours ¹⁸ HA=50°C High Ambient ¹⁹ MS/DIM-L08=Motion Sensor for Dimming Operation, Maximum 8' Mounting Height ^{20,21} MS/DIM-L20=Motion Sensor for Dimming Operation, 9' - 20' Mounting Height ^{20,22} MS/DIM-L40=Motion Sensor for Dimming Operation, 21' - 40' Mounting Height ^{20,23} MS/DIM-L40W=Motion Sensor for Dimming Operation, 21' - 40' Mounting Height (Wide Range) ^{20,24} MS/X-L08=Bi-Level Motion Sensor, Maximum 8' Mounting Height ^{20,21,25} MS/X-L20=Bi-Level Motion Sensor, 9' - 20' Mounting Height ^{20,22,25} MS/X-L40=Bi-Level Motion Sensor, 21' - 40' Mounting Height ^{20,23,25} MS/X-L40W=Bi-Level Motion Sensor, 21' - 40' Mounting Height (Wide Range) ^{20,24,25} MS-L08=Motion Sensor for ON/OFF Operation, Maximum 8' Mounting Height ^{20,21} MS-L20=Motion Sensor for ON/OFF Operation, 9' - 20' Mounting Height ^{20,22} MS-L40=Motion Sensor for ON/OFF Operation, 21' - 40' Mounting Height ^{20,23} MS-L40W=Motion Sensor for ON/OFF Operation, 21' - 40' Mounting Height (Wide Range) ^{20,24} LWR-LW=LumaWatt Wireless Sensor, Wide Lens for 8' - 16' Mounting Height ²⁶ LWR-LN=LumaWatt Wireless Sensor, Narrow Lens for 16' - 40' Mounting Height ²⁶ L90=Optics Rotated 90° Left R90=Optics Rotated 90° Right MIT=Factory Installed Mesh Top TH=Tool-less Door Hardware LCF=Light Square Trim Plate Painted to Match Housing ²⁷ HSS=Factory Installed House Side Shield ²⁸ CE=CE Marking ²⁹</p>					<p>OA/RA1016=NEMA Photocontrol Multi-Tap - 105-285V OA/RA1027=NEMA Photocontrol - 480V OA/RA1201=NEMA Photocontrol - 347V OA/RA1013=Photocontrol Shorting Cap OA/RA1014=120V Photocontrol MA1252=10kV Surge Module Replacement MA1036-XX=Single Tenon Adapter for 2-3/8" O.D. Tenon MA1037-XX=2 @ 180° Tenon Adapter for 2-3/8" O.D. Tenon MA1197-XX=3 @ 120° Tenon Adapter for 2-3/8" O.D. Tenon MA1188-XX=4 @ 90° Tenon Adapter for 2-3/8" O.D. Tenon MA1189-XX=2 @ 90° Tenon Adapter for 2-3/8" O.D. Tenon MA1190-XX=3 @ 90° Tenon Adapter for 2-3/8" O.D. Tenon MA1191-XX=2 @ 120° Tenon Adapter for 2-3/8" O.D. Tenon MA1038-XX=Single Tenon Adapter for 3-1/2" O.D. Tenon MA1039-XX=2 @ 180° Tenon Adapter for 3-1/2" O.D. Tenon MA1192-XX=3 @ 120° Tenon Adapter for 3-1/2" O.D. Tenon MA1193-XX=4 @ 90° Tenon Adapter for 3-1/2" O.D. Tenon MA1194-XX=2 @ 90° Tenon Adapter for 3-1/2" O.D. Tenon MA1195-XX=3 @ 90° Tenon Adapter for 3-1/2" O.D. Tenon FSIR-100=Wireless Configuration Tool for Occupancy Sensor ²⁰ GLEON-MIT1=Field Installed Mesh Top for 1-4 Light Squares GLEON-MIT2=Field Installed Mesh Top for 5-6 Light Squares GLEON-MIT3=Field Installed Mesh Top for 7-8 Light Squares GLEON-MIT4=Field Installed Mesh Top for 9-10 Light Squares GLEON-QM=Quick Mount Arm Kit GLEON-QMEA=Quick Mount Extended Arm Kit LS/HSS=Field Installed House Side Shield ^{28,30}</p>		

NOTES:

- Customer is responsible for engineering analysis to confirm pole and fixture compatibility for all applications. Refer to our white paper WP513001EN for additional support information.
- DesignLights Consortium™ Qualified. Refer to www.designlights.org Qualified Products List under Family Models for details.
- Standard 4000K CCT and minimum 70 CRI.
- Not compatible with extended quick mount arm (QMEA).
- Not compatible with standard quick mount arm (QM) or extended quick mount arm (QMEA).
- Requires the use of an internal step down transformer when combined with sensor options. Not available with sensor at 1200mA. Not available in combination with the HA high ambient and sensor options at 1A.
- Only for use with 480V Wye systems. Per NEC, not for use with ungrounded systems, impedance grounded systems or corner grounded systems (commonly known as Three Phase Three Wire Delta, Three Phase High Leg Delta and Three Phase Corner Grounded Delta systems).
- May be required when two or more luminaires are oriented on a 90° or 120° drilling pattern. Refer to arm mounting requirement table.
- Factory installed.
- Maximum 8 light squares.
- Maximum 6 light squares.
- Extended lead times apply. Use dedicated IES files for 3000K, 5000K and 6000K when performing layouts. These files are published on the Galleon luminaire product page on the website.
- Extended lead times apply. Use dedicated IES files for 3000K, 5000K and 6000K when performing layouts. These files are published on the Galleon luminaire product page on the website.
- 1 Amp standard. Use dedicated IES files for 600mA, 800mA and 1200mA when performing layouts. These files are published on the Galleon luminaire product page on the website.
- Not available with HA option.
- 2L is not available with MS, MS/X or MS/DIM at 347V or 480V. 2L in AF-02 through AF-04 requires a larger housing, normally used for AF-05 or AF-06. Extended arm option may be required when mounting two or more fixtures per pole at 90° or 120°. Refer to arm mounting requirement table.
- Not available with LumaWatt wireless sensors.
- Requires the use of P photocontrol or the PER7 or R photocontrol receptacle with photocontrol accessory. See After Hours Dim supplemental guide for additional information.
- 50°C lumen maintenance data applies to 600mA, 800mA and 1A drive currents.
- The FSIR-100 configuration tool is required to adjust parameters including high and low modes, sensitivity, time delay, cutoff and more. Consult your lighting representative at Eaton for more information.
- Approximately 22' detection diameter at 8' mounting height.
- Approximately 40' detection diameter at 20' mounting height.
- Approximately 60' detection diameter at 40' mounting height.
- Approximately 100' detection diameter at 40' mounting height.
- Replace X with number of Light Squares operating in low output mode.
- LumaWatt wireless sensors are factory installed only requiring network components RF-EM-1, RF-GW-1 and RF-ROUT-1 in appropriate quantities. See www.eaton.com/lighting for LumaWatt application information.
- Not available with house side shield (HSS).
- Only for use with SL2, SL3, SL4 and AFL distributions. The Light Square trim plate is painted black when the HSS option is selected.
- CE is not available with the LWR, MS, MS/X, MS/DIM, P, R or PER7 options. Available in 120-277V only.
- One required for each Light Square.

DESCRIPTION

The Impact Elite family of wall luminaires is the ideal complement to site design. Incorporating modular LightBAR™ technology, the Impact Elite luminaire provides outstanding uniformity and energy-conscious illumination. Combined with a rugged construction, the Impact Elite luminaire is the ideal facade and security luminaire for zones surrounding schools, office complexes, apartments and recreational facilities. UL/cUL listed for wet locations.

Catalog #		Type
Project		
Comments		Date
Prepared by		

SPECIFICATION FEATURES

Construction

Heavy-wall, die-cast aluminum housing and removable hinged door frame for precise tolerance control and repeatability. Hinged door inset for clean mating with housing surface and secured via two captive fasteners. Optional tamper-resistant Torx™ head fasteners offer vandal resistant access to the electrical chamber.

Optics

Choice of six patented, high-efficiency AccuLED Optics™ distributions. Optics are precisely designed to shape the light output, maximizing efficiency and application spacing. AccuLED Optics technology creates consistent distributions with the scalability to meet customized application requirements. Offered Standard in 4000K (+/- 275K) CCT and minimum 70 CRI. Optional 3000K CCT, 5000K CCT and 5700K CCT.

Electrical

LED drivers mount to die-cast aluminum back housing for optimal heat sinking, operation efficacy, and prolonged life. Standard drivers feature electronic universal voltage (120-277V 50/60Hz), 347V 60Hz or 480V 60Hz operation, greater than 0.9 power factor, less than 20% harmonic distortion, and are suitable for operation in -40°C to 40°C ambient environments. All fixtures are shipped standard with 10kV/10kA common – and differential – mode surge protection. LightBARs feature an IP66 enclosure rating and maintain greater than 95% lumen maintenance at 60,000 hours per IESNA TM-21. Emergency egress options for -20°C ambient environments and occupancy sensor available.

Mounting

Gasketed and zinc plated rigid steel mounting attachment fits directly to 4" j-box or wall with the Impact Elite "Hook-N-Lock" mechanism for quick installation. Secured with two captive corrosion resistant black oxide coated allen head set screws concealed but accessible from bottom of fixture.

Finish

Cast components finished in a five-stage super TGIC polyester powder coat paint, 2.5 mil nominal thickness for superior protection against fade and wear. Standard colors include black, bronze, grey, white, dark platinum and graphite metallic. RAL and custom color matches available. Consult the McGraw-Edison Architectural Colors brochure for the complete selection.

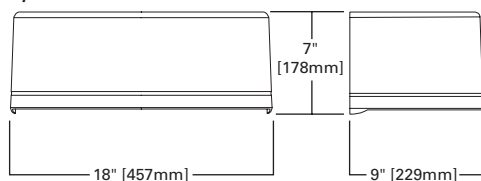
Warranty

Five-year warranty.

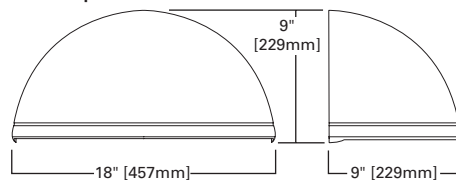


DIMENSIONS

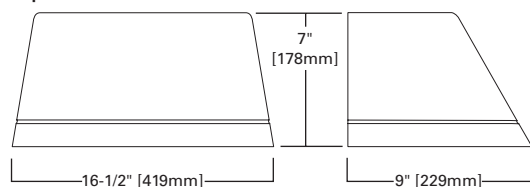
Cylinder



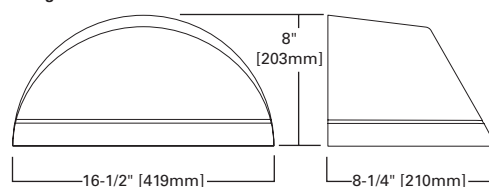
Quarter Sphere



Trapezoid



Wedge



ISC/ISS/IST/ISW IMPACT ELITE LED



1 - 2 LightBARs
Solid State LED

WALL MOUNT LUMINAIRE

CERTIFICATION DATA

UL/cUL Listed
LM79 / LM80 Compliant
IP66 LightBARs
ISO 9001
DesignLights Consortium® Qualified*

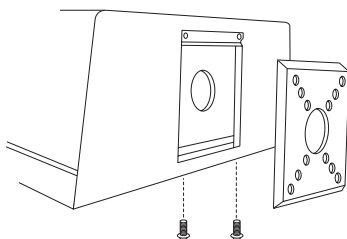
ENERGY DATA

Electronic LED Driver
>0.9 Power Factor
<20% Total Harmonic Distortion
120-277V/50 & 60Hz, 347V/60Hz,
480V/60Hz
-40°C Minimum Temperature
40°C Ambient Temperature Rating

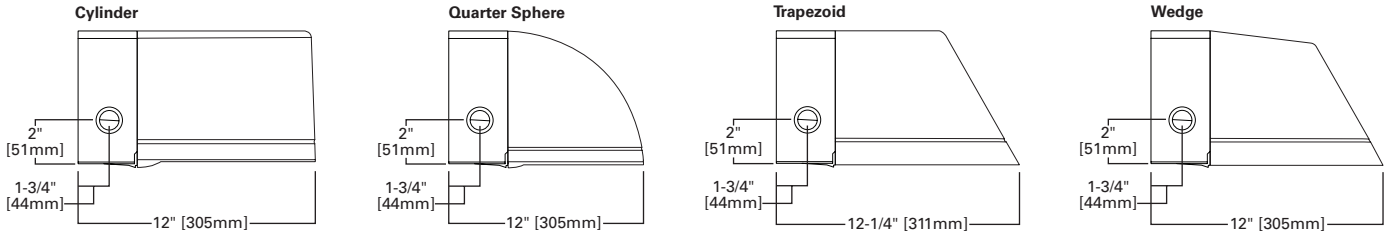
SHIPPING DATA

Approximate Net Weight:
18 lbs. (8 kgs.)

HOOK-N-LOCK MOUNTING



THRUWAY BACK BOX



POWER AND LUMENS BY BAR COUNT

Number of LightBARs	E01		E02		F01		F02	
	21 LED LightBAR				7 LED LightBAR			
Drive Current	350mA				1A			
Power (Watts)	120-277V	25W	47W	26W	50W			
Current (A)	120V	0.22	0.40	0.22	0.42			
	277V	0.10	0.18	0.10	0.19			
Power (Watts)	347V or 480V	31W	52W	32W	55W			
Current (A)	347V	0.11	0.16	0.11	0.17			
	480V	0.16	0.18	0.16	0.18			
Optics								
BL2	Lumens	2,738	5,476	2,260	4,521			
	Bug Rating	B1-U0-G1	B1-U0-G1	B1-U0-G1	B1-U0-G1			
BL3	Lumens	2,702	5,405	2,231	4,462			
	Bug Rating	B1-U0-G1	B1-U0-G2	B1-U0-G1	B1-U0-G1			
BL4	Lumens	2,613	5,225	2,157	4,313			
	Bug Rating	B1-U0-G1	B1-U0-G2	B1-U0-G1	B1-U0-G1			
GZW	Lumens	2,785	5,570	2,299	4,598			
	Bug Rating	B2-U0-G2	B3-U0-G3	B1-U0-G1	B2-U0-G2			
SLR/SL	Lumens	2,435	4,869	2,010	4,020			
	Bug Rating	B1-U0-G1	B1-U0-G2	B1-U0-G1	B1-U0-G2			

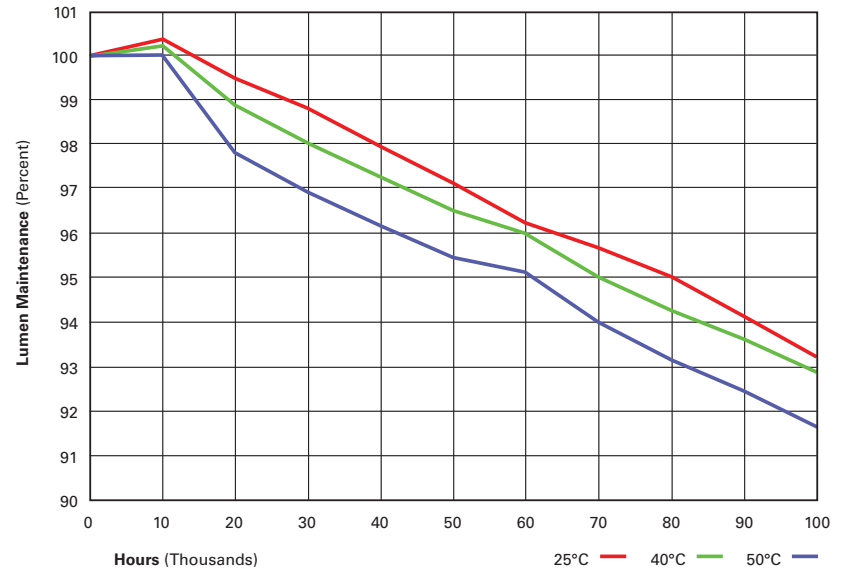
LUMEN MAINTENANCE

Ambient Temperature	25,000 Hours*	50,000 Hours*	60,000 Hours*	100,000 Hours	Theoretical L70 (Hours)
25°C	> 99%	> 97%	> 96%	> 93%	> 450,000
40°C	> 98%	> 97%	> 96%	> 92%	> 425,000
50°C	> 97%	> 96%	> 95%	> 91%	> 400,000

* Per IESNA TM-21 data.

LUMEN MULTIPLIER

Ambient Temperature	Lumen Multiplier
10°C	1.02
15°C	1.01
25°C	1.00
40°C	0.99



ORDERING INFORMATION

Sample Number: ISC-E02-LED-E1-BL3-GM

Product Family ¹	Number of LightBARs ^{2,3}	Lamp Type	Voltage	Distribution	Color ⁵
ISC=Impact Elite LED Small Cylinder ISS=Impact Elite LED Small Quarter Sphere IST=Impact Elite LED Small Trapezoid ISW=Impact Elite LED Small Wedge	E01=(1) 21 LED LightBAR E02=(2) 21 LED LightBARs F01=(1) 7 LED LightBAR F02=(2) 7 LED LightBARs	LED=Solid State Light Emitting Diodes	E1=Electronic (120-277V) 347=347V 480=480V ⁴	BL2=Type II w/Back Light Control BL3=Type III w/Back Light Control BL4=Type IV w/Back Light Control GZW=Wall Grazer Wide SLL=90° Spill Light Eliminator Left SLR=90° Spill Light Eliminator Right	AP=Grey BZ=Bronze BK=Black DP=Dark Platinum GM=Graphite Metallic WH=White
Options (Add as Suffix)				Accessories (Order Separately) ¹¹	
2L=Two Circuits ⁶ 7030=70 CRI / 3000K CCT ⁷ 7050=70 CRI / 5000K CCT ⁷ 7060=70 CRI / 5700K CCT ⁷ 8030=80 CRI / 3000K CCT ⁷ P=Button Type Photocontrol (Available in 120, 208, 240 or 277V. Must Specify Voltage) OSB=Occupancy Sensor with Back Box (Specify 120V or 277V) ⁸ BBB-XX=Battery Pack with Back Box (Specify 120V or 277V) ⁹ CWB-XX=Cold Weather Battery Pack with Back Box (Specify 120V or 277V) ¹⁰ DIM=0-10V Dimming Drivers LCF=LightBAR Cover Plate Matches Housing Finish ULG=Uplight Glow TR=Tamper Resistant Hardware				MA1253=10kV Circuit Module Replacement MA1254-XX=Thruway Back Box - Impact Elite Trapezoid MA1255-XX=Thruway Back Box - Impact Elite Cylinder MA1256-XX=Thruway Back Box - Impact Elite Quarter Sphere MA1257-XX=Thruway Back Box - Impact Elite Wedge	

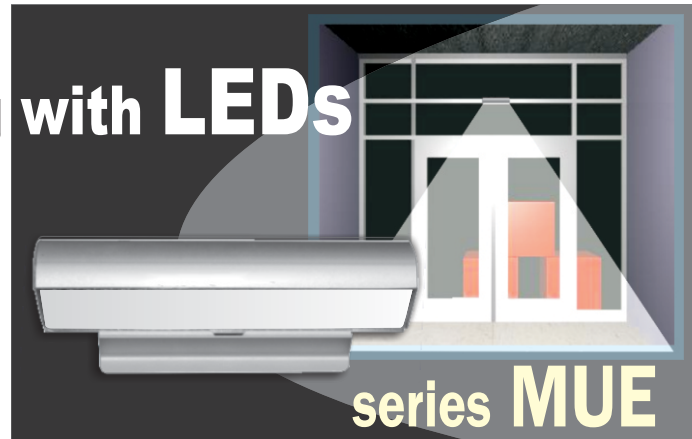
- NOTES:
- DesignLights Consortium® Qualified. Refer to www.designlights.org Qualified Products List under Family Models for details.
 - Standard 4000K CCT and greater than 70 CRI. LightBARs for downlight use only.
 - 21 LED LightBAR powered by 350mA and 7 LED LightBAR powered by 1A.
 - Only for use with 480V Wye systems. Per NEC, not for use with ungrounded systems, impedance grounded systems or corner grounded systems (commonly known as Three Phase Three Wire Delta, Three Phase High Leg Delta and Three Phase Corner Grounded Delta systems).
 - Custom and RAL color matching available upon request. Consult your lighting representative at Eaton for more information.
 - Low-level output varies by bar count. Consult factory. Not available with 347V or 480V. Available with two bars (E02 or F02) only.
 - Extended lead times apply.
 - Available with E02 or F02, only one bar on street side will be wired to sensor. Time delay factory setting 15-minutes. When ordered with PC option, both bars are connected to photocontrol as primary switching means. Standard sensor lens covers 8" mounting height, 360° coverage, maximum 48" diameter. Not available in all configurations or with BBB or CWB options.
 - Specify 120V or 277V. LED standard integral battery pack is rated for minimum operating temperature 32°F (0°C). Operates one bar for 90-minutes. Not available in all configurations or with OSB option. Consult factory.
 - Specify 120V or 277V. LED cold weather integral battery pack is rated for minimum operating temperature -4°F (-20°C). Operates one bar for 90-minutes. Not available in all configurations or with OSB option. Consult factory.
 - Replace XX with color suffix.



Eaton
1121 Highway 74 South
Peachtree City, GA 30269
P: 770-486-4800
www.eaton.com/lighting

Specifications and dimensions subject to change without notice.

The Brightest Idea is Emergency Lighting with LEDs



GENERAL DESCRIPTION

Operating in emergency mode or optional normal- on, this fixture is designed to mount directly on structural mullion beams used in typical glass-fronted entrances, with vertical surface as small as 2". This fixture has full 90° cut-off and will provide efficient emergency lighting in front of egress doorways, or along extended pathways.

CONSTRUCTION

- Rugged extruded aluminum housing with stainless hardware is corrosion proof.
- Wet location listed UL 924. Certified IP66.
- Uniform, high brightness lighting over the path of egress.
- Full 90° cut- off.
- Three versions are available:

RE= Central Battery System Series CBS or other qualified source 12V- 24 VDC.
BB= Battery backup from Remote Battery Supply Series RPS.
AC= 120/ 277 VAC supply.

ELECTRONICS

- Dual operation from either a battery or optional normally on power source.
- Lamps are connected in parallel-series strings, as required to meet requirements of NEC and Life Safety Codes. Lighting continues even after failure of One lamp or circuit.

ENERGY EFFICIENT OPERATION

- Dual function operation for optional normally on night or security lighting as well as emergency lighting.
- Very low power consumption in optional night/ security mode. The security lighting circuit is independent of emergency lighting and may be switched manually, by an exterior photocell, or other automatic means.
- Over 50,000 hour lamp life in normal use.
- IES photometric data available for all models.

CODES

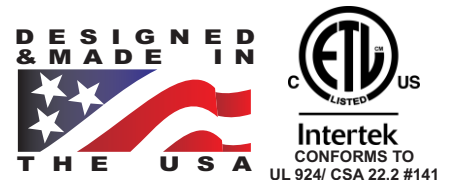
- Manufactured and tested to UL Standard 924 and NFPA Life Safety Code 101.

WARRANTY

- 5 year total customer satisfaction warranty. For Details see product catalog technical data section.

FIXTURE SCHEDULE

MODEL	CATALOG NO
APPROVAL	JOB INFORMATION

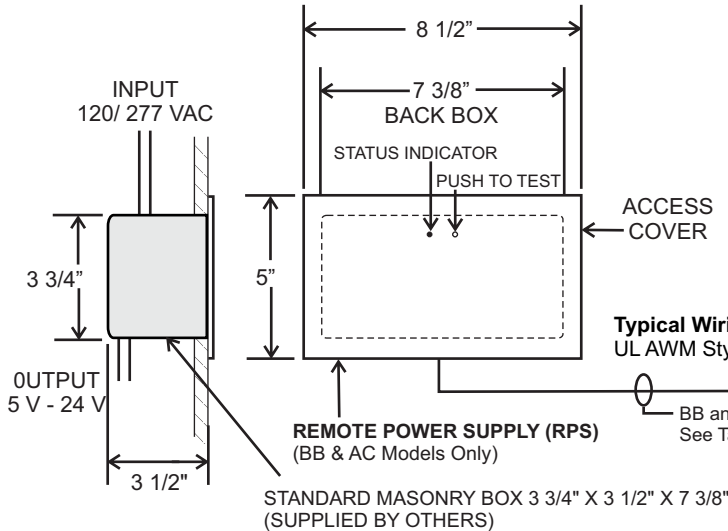


Moonlite LED® Mullion Mount Emergency Light Series MUE

SUGGESTED SPECIFICATIONS:

Supply and install the MOONLITE LED Series MUE Mullion Mount emergency lighting fixture manufactured by Sigtex Lighting Inc. The MUE assembly shall be listed for installation in wet locations in compliance with UL 924 and IP66 standards and shall be capable of operating from Sigtex remote power supply Series RPS, the Sigtex central battery system Series CBS, or from other remote power sources supplying 12-24 VDC or VAC. Upon loss of AC building power, emergency models shall operate for a minimum of 90 minutes in compliance with UL Standard 924 and NFPA1501.

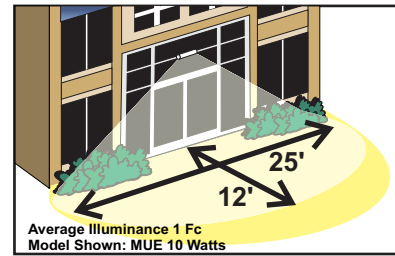
MOUNTING DATA & DIMENSIONS:



TYPICAL STOCK MODELS:
CROUSE HINDS #TP693
RACO # 698

SPACING GUIDE

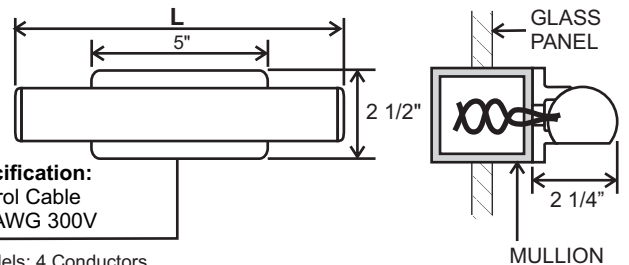
MUE.4.16.13



NOTE: FOR REFERENCE ONLY. STANDARD REFLECTANCES 80/50/20. SIGTEX IS NOT RESPONSIBLE FOR SPECIFIC CONDITIONS THAT MAY ALTER THE RESULTS.

CONTACT SIGTEX FOR LAYOUT ASSISTANCE
Code Compliant Emergency lighting layouts provided free of charge!

WALL MOUNT



TOP MOUNT

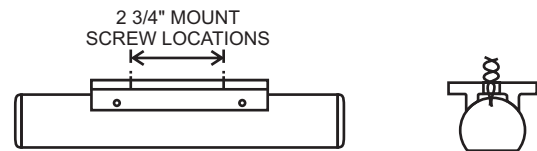


TABLE 1

MAX WIRING LENGTH FROM RPS TO FIXTURE BB & AC Models	
WIRING SIZE AWG	LENGTH (FT)
	BB & AC
#20	100
#18	170
#16	225

LENGTH TABLE

POWER	L
10 Watts	10"
20 Watts*	21"

*RE & AC Models Only

SECURITY LIGHTING CONTROL

RE Models: Requires SEC Option 'S' with CBS

BB Models: Requires Option 'SB' for connection to 120 VAC

BB-DG Models: Requires Option 'SD' for connection to 120/ 277 VAC

RPS SELF-TEST DIAGNOSTIC FUNCTIONS

BB MODELS WITH DG FUNCTION

STATUS	LED DISPLAY
NORMAL FULL CHARGE	GREEN ON
NORMAL FAST CHARGE	ORANGE ON
FAILED BATTERY	RED FLASH FAST
FAILED LAMP	GREEN FLASH
FAILED TRANSFER	ORANGE FLASH
FAILED CHARGER	RED FLASH SLOW

FIXTURE ORDERING INFORMATION: EXAMPLE: MUEBB10AW-DG

MUE	BB	10	A	W	-DG
MODEL SERIES	OPERATION	POWER	HOUSING COLOR	MOUNT	OPTIONS
MUE	RE= Central Battery or other 12- 24 VDC Remote Source BB= Battery Backup (Includes RPS) AC= No Battery (Includes RPS)	10= 10 Watts Emergency & Normal On Power 20= 20 Watts Emergency & Normal On power (RE & AC Models Only)	W= Satin White A= Aluminum B= Dark Bronze X= Custom	T= Top W= Wall	DG= Self- Test Diagnostics (BB Models Only) SB= Security Lighting with Control Switch for Standard BB Operation (120V) SD= Security Lighting with Control Switch for BB Operation with DG option (120/ 277V) CW1= Custom Window Filter -3800K DAC= Dual AC Input 2HT= 2" Canopy Height 5HT= 5" Canopy Height

SUITABLE FOR WET LOCATIONS
AMBIENT TEMPERATURE LIMITS:
-40° C to +50° C



Sigtex Inc

LIGHTING

220 VFW Avenue, Grasonville, MD 21638

TEL: (410) 827-8300 Fax: (410) 827-8866

sales@sigtexinc.com www.sigtexinc.com

DISTRIBUTOR:

Specifications and Dimensions subject to change without notice.

SM868354CLTE

LED OUTDOOR WALL LANTERN

This contemporary outdoor collection features an aluminum frame finished in Textured Ebony supporting a Clear glass cylinder. A seeded acrylic post floats down the center, illuminated by LED for the ultimate in energy savings and low maintenance.

Finish
Texture Ebony

Material
Aluminum

Measurements
W 8.25" x H 22.25" x E 8.5"

Canopy
W 5.5" x H 11.5"

Bulb Specifications
10W LED 3500K (Integrated)

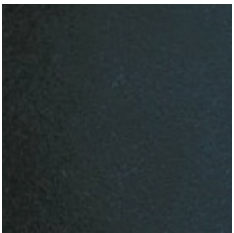
Color Rendition Index
80+

Initial Lumens
480 lm

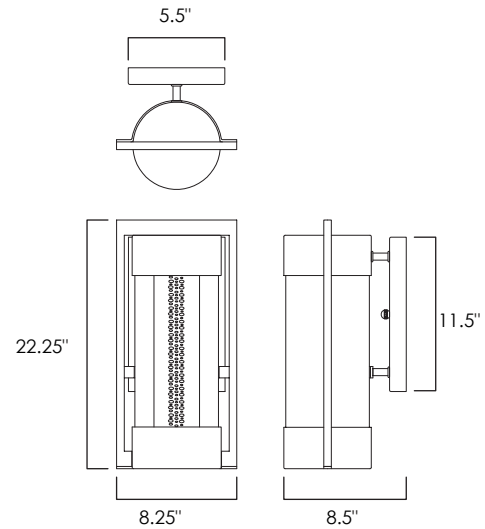
Certificates
California Title 24
Wet



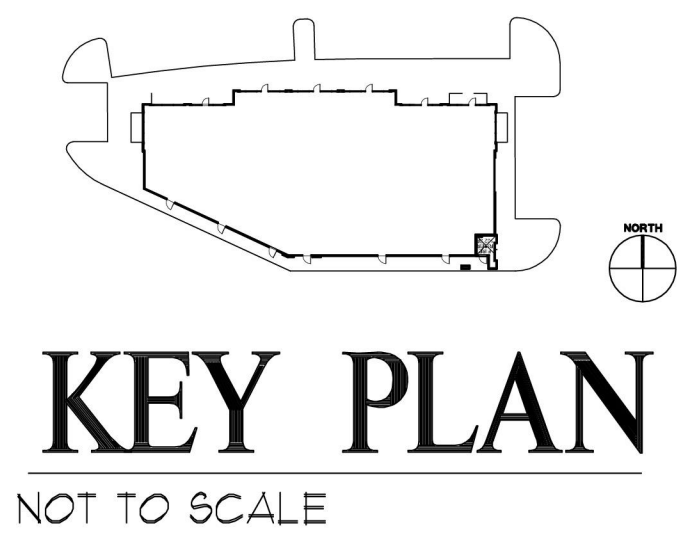
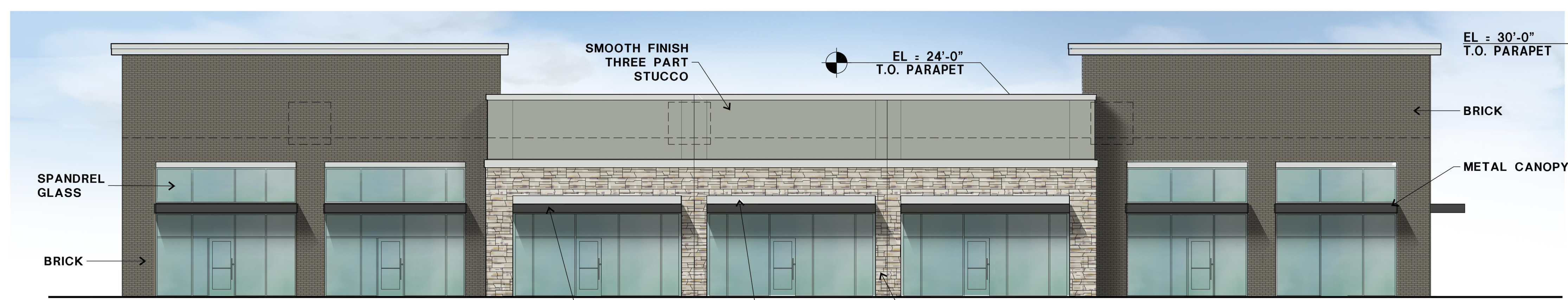
Finish



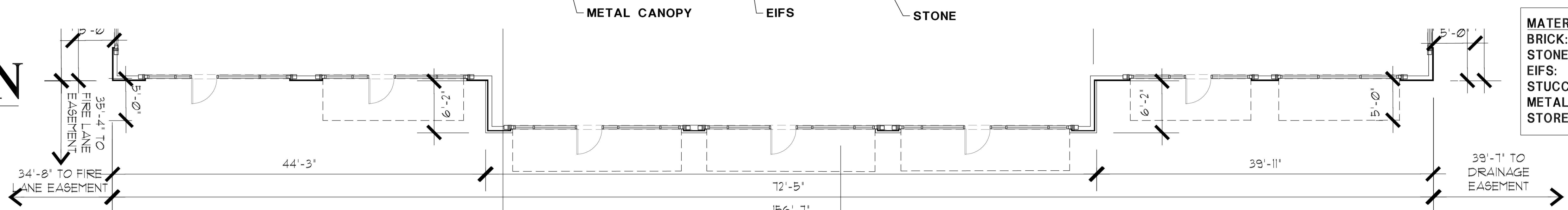
Texture Ebony



FRONT	SF	TOTAL %
BRICK	1394	55.43%
STONE	391	15.55%
STUCCO	509	20.24%
EIFS	221	8.79%
TOTAL	2515	100.00%



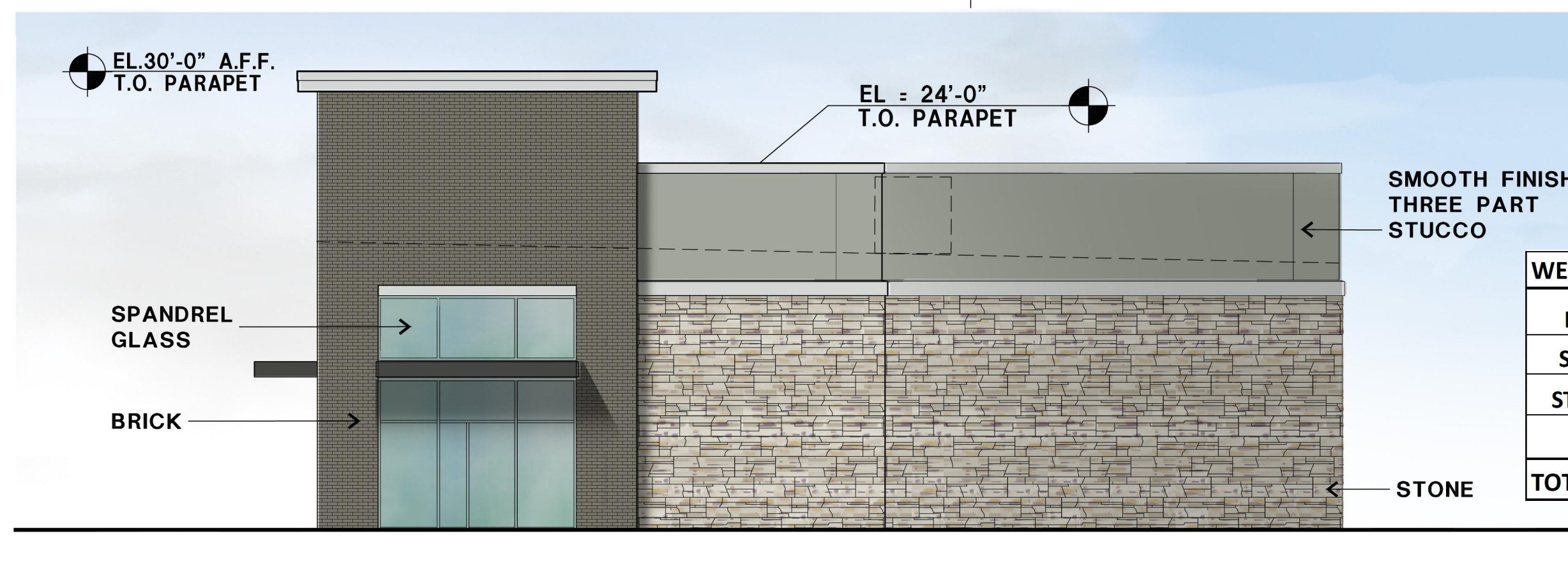
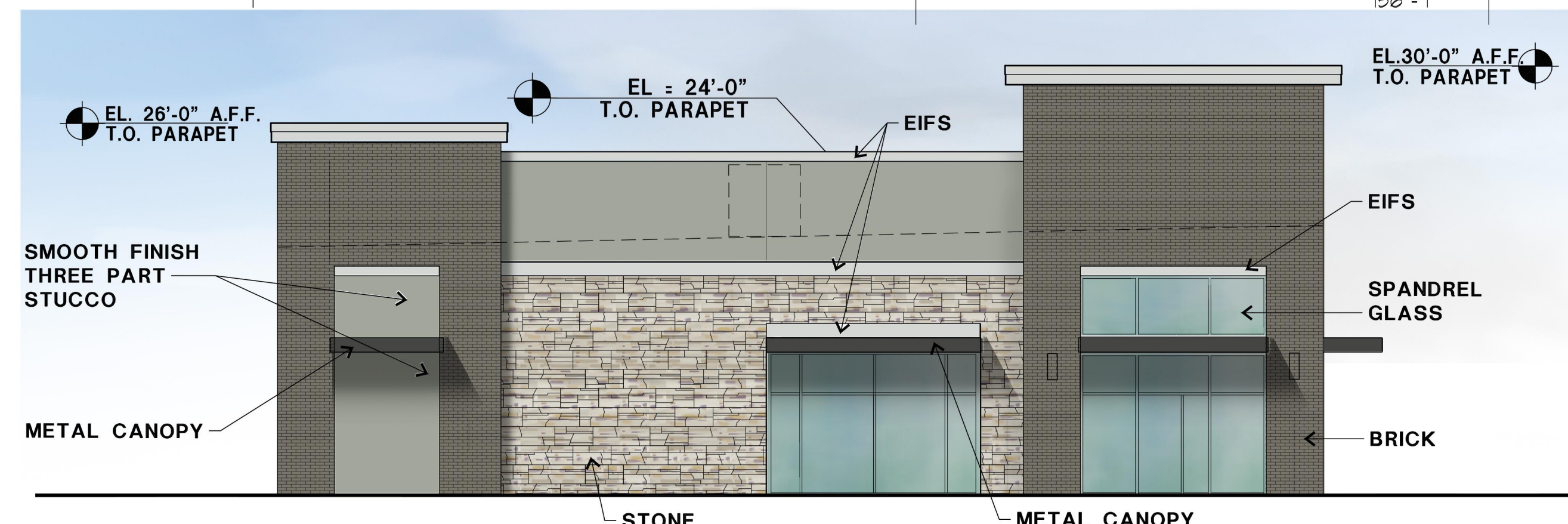
01 NORTH ELEVATION
FRONT
1/8" = 1'-0"



MATERIALS/COLORS:

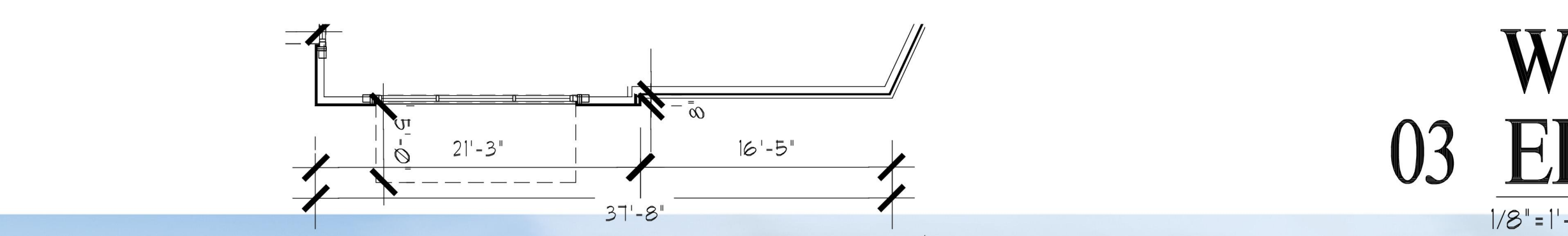
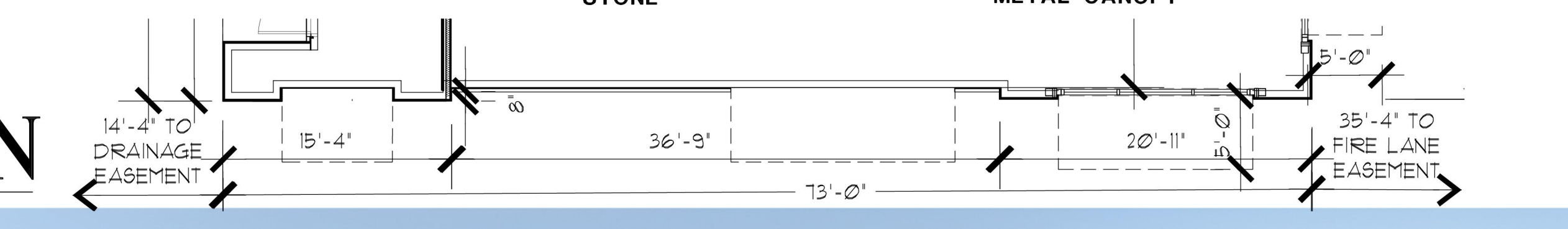
BRICK:	ENDICOTT-LIGHT GRAY
STONE:	KONI- MOUNTAIN LEDGE COUNTY
EIFS:	COLOR TO MATCH SW 7030 ANEW GRAY
STUCCO:	COLOR TO MATCH SW 7744 ZEUS
METAL CANOPIES:	COLOR TO MATCH BERRIDGE LEAD COTE
STOREFRONT:	CLEAR ANODIZED

EAST	SF	TOTAL %
BRICK	661	47.83%
STONE	380	27.50%
STUCCO	256	18.52%
EIFS	85	6.15%
TOTAL	1382	100.00%



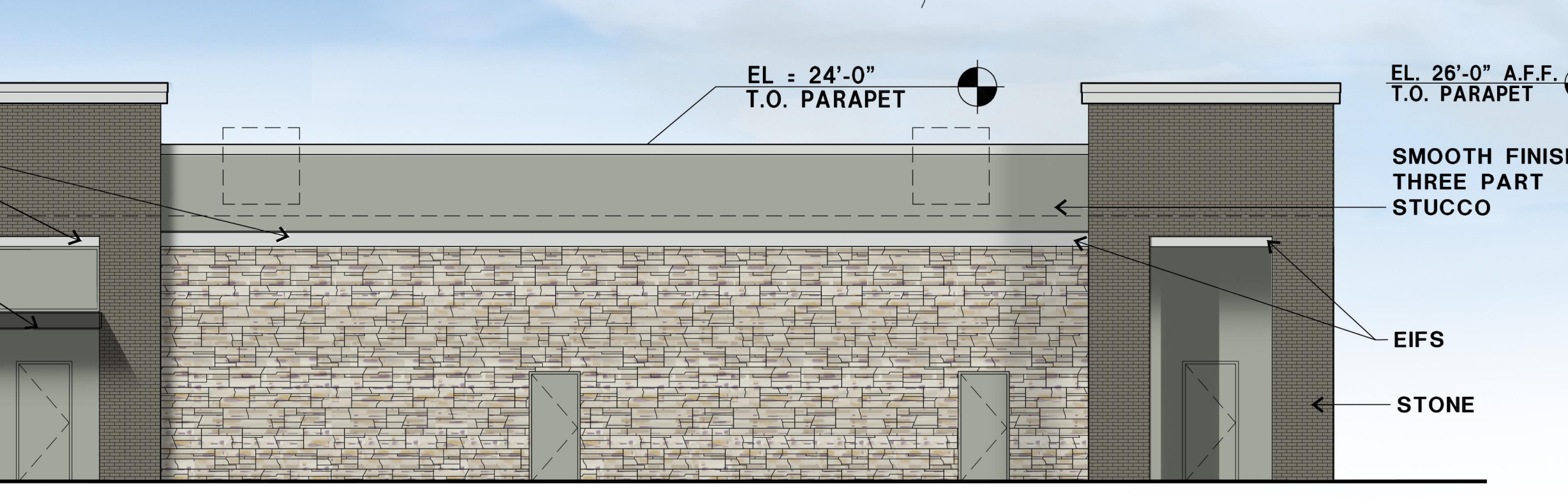
WEST	SF	TOTAL %
BRICK	393	26.15%
STONE	708	47.11%
STUCCO	321	21.36%
EIFS	81	5.39%
TOTAL	1503	100.00%

02 EAST ELEVATION
SIDE
1/8" = 1'-0"

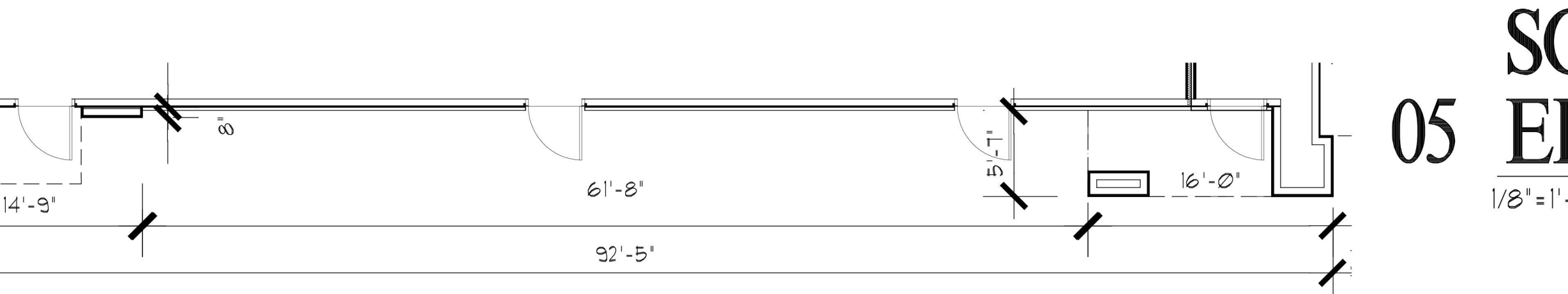
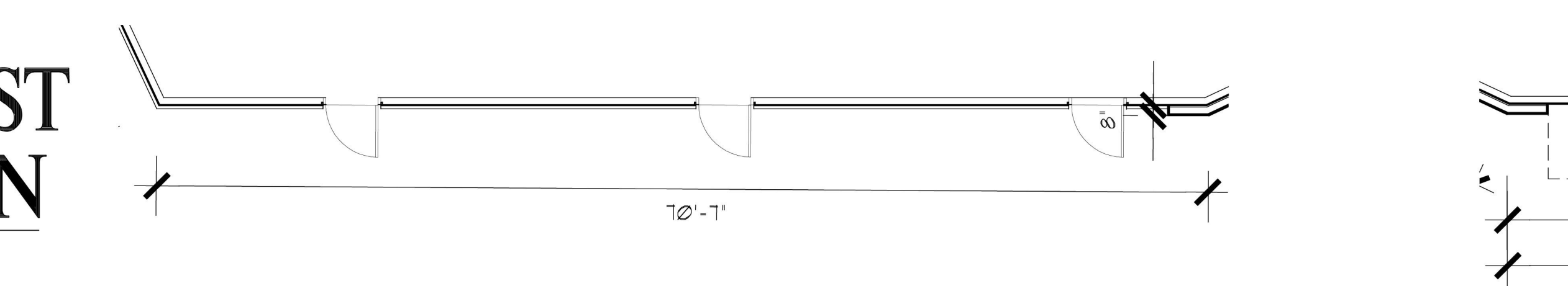


03 WEST ELEVATION
SIDE
1/8" = 1'-0"

SOUTH WEST AND SOUTH	SF	TOTAL %
BRICK	840	30.20%
STONE	1675	60.23%
STUCCO	199	7.16%
EIFS	67	2.41%
TOTAL	2781	100.00%



04 SOUTHWEST ELEVATION
REAR
1/8" = 1'-0"



05 SOUTH ELEVATION
REAR
1/8" = 1'-0"



APPLICANT:
MOORE WORTH INVESTMENTS, LLC
10210 N CENTRAL EXP
SUITE 300
DALLAS TX 75231
CONTACT: WORTH WILLIAMS
214. 415. 9993

5310 Harvest Hill Rd. Suite 226
Dallas, Texas 75230
972-385-9651
www.GSOarchitects.com

LAKESHORE COMMONS RETAIL
ROCKWALL, TEXAS

LOT 1, BLOCK A
LAKESHORE COMMONS ADDN

ELEV01
JOB: 15-074
ISSUE DATE: 09/13/16
SCALE: AS NOTED
COPYRIGHT © 2016 GSO ARCHITECTS, INC. THESE DRAWINGS OR PARTS THEREOF, MAY NOT BE REPRODUCED IN ANY FORM, BY ANY METHOD, FOR ANY PURPOSE, WITHOUT PRIOR WRITTEN CONSENT FROM GSO ARCHITECTS, INC.