

SP2015-018 - RACETRAC  
 REPLAT- LOCATION MAP =



# City of Rockwall

Planning & Zoning Department  
 385 S. Goliad Street  
 Rockwall, Texas 75032  
 (P): (972) 771-7745  
 (W): [www.rockwall.com](http://www.rockwall.com)

The City of Rockwall GIS maps are continually under development and therefore subject to change without notice. While we endeavor to provide timely and accurate information, we make no guarantees. The City of Rockwall makes no warranty, express or implied, including warranties of merchantability and fitness for a particular purpose. Use of the information is the sole responsibility of the user.



















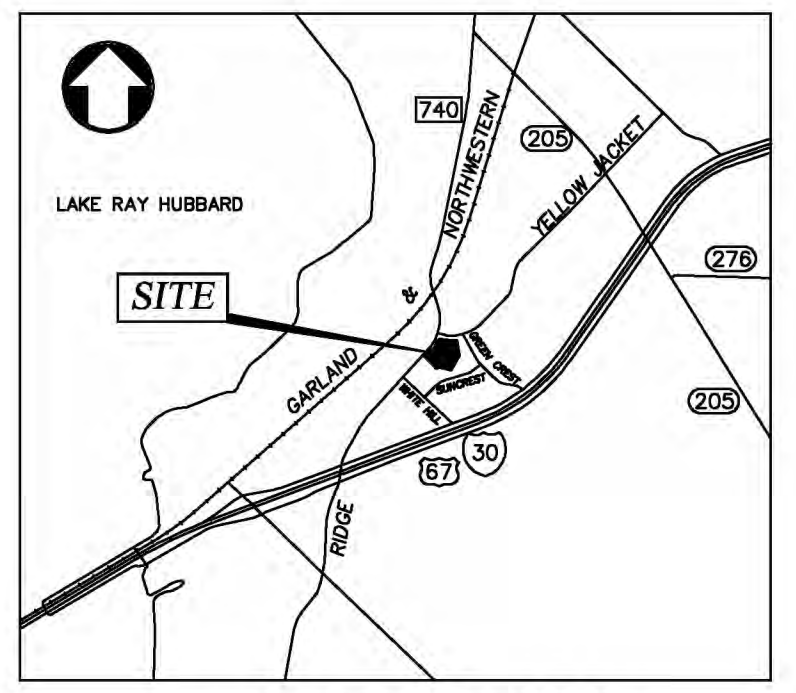
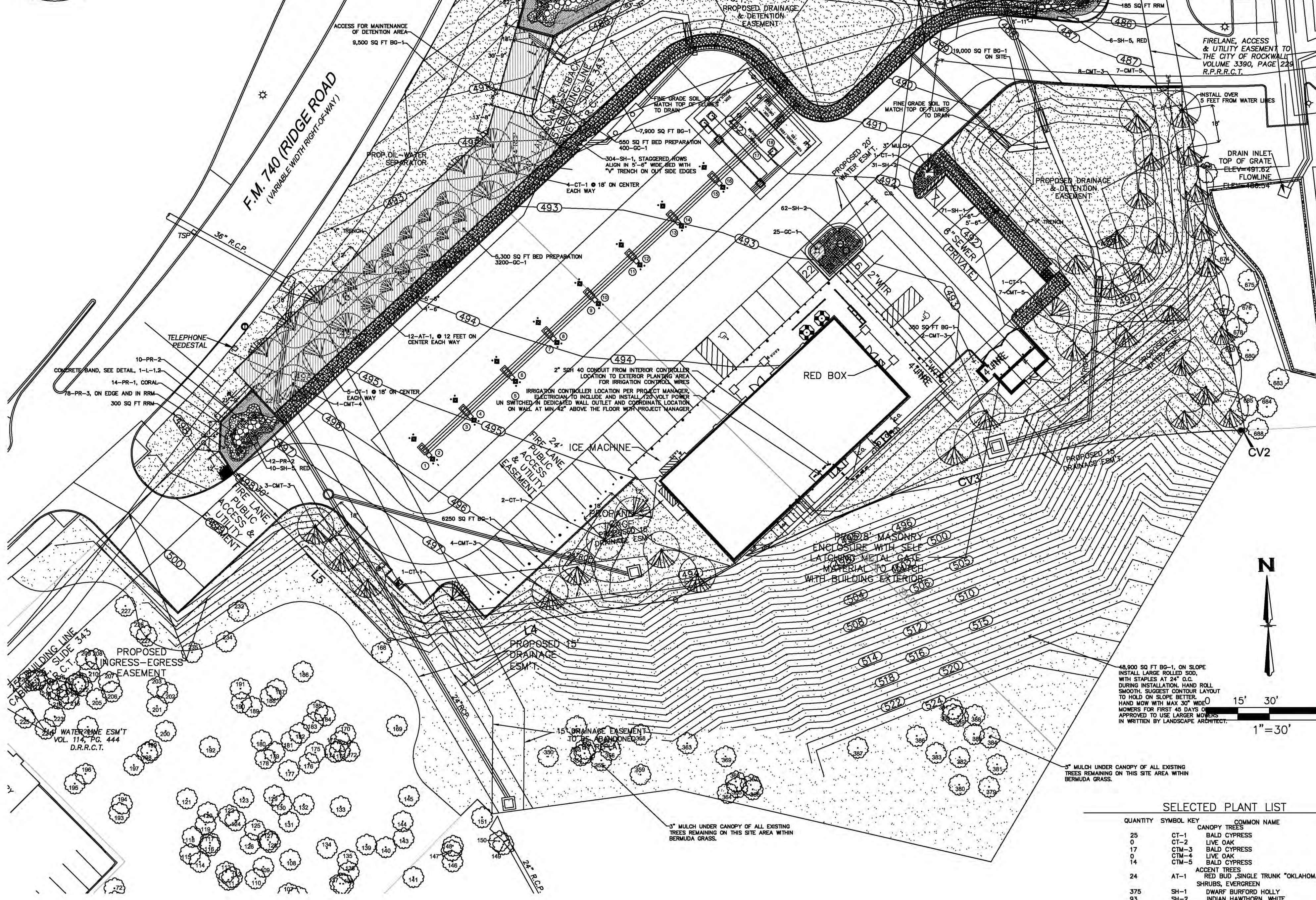


**LANDSCAPE NOTES**

- Contractor responsible for locating and protecting all underground utilities prior to digging.
- Contractor responsible for protecting existing trees from damage during construction as shown on plans.
- General Contractor to install 6" minimum depth of clean, friable topsoil at all planting beds and low areas prior to fine grading. See Topsoil specification Sheet L-1.3.
- All shrub beds (existing and new) to be mulched with a 4-inch minimum layer of hardwood mulch (brown) as defined in the landscape specifications on Sheet L-1.3.
- All annual and perennial beds to be filled to a minimum depth of 18 inches and amended with 4 inches of organic material. Mulch planted annual and perennial beds with 2-inch depth of mini nuggets. RaceTrac will reject all others.
- Existing grass in proposed planting areas to be killed and removed and area to be hand raked to remove all rocks and debris larger than 1 inch in diameter prior to planting shrubs or laying sod. Landscape contractor to provide fine grading. See grading specification Sheet L-1.3.
- Any existing grass disturbed during construction to be fully removed, re-graded and replaced. All tire marks and indentations to be repaired. No exceptions.
- Landscape Contractor to coordinate with Landscape Architect (L.A.) to have L.A. select (tag) and photograph all plant material prior to shipment of material to site. Photographs to be submitted to L.A. and RaceTrac Project Manager for approval or rejection. Photographs shall show specie and container size of plant material. All trees to be photographed individually or hand-selected by L.A. Shrubs and other plants to be photographed in grouping with one photograph of single plant submitted also, see submittal specification on Sheet L-1.3.
- Soil to be tested to determine fertilizer and lime requirements and distributed prior to laying sod as directed by L.A. Provide results to L.A. and RaceTrac Project Manager.
- Sod to be delivered fresh (Cut less than 24 hours prior to arriving on site), laid immediately, rolled, and watered thoroughly immediately after planting. Edge of sod adjacent to mulch beds to be shovel cut as detailed on Sheet L-1.2. All sod to be delivered on large rolls available. There shall be no gaps between sod joints.
- All changes to design or plant substitutions are to be authorized in writing by the Landscape Architect and RaceTrac Construction Project Manager.
- Planting Mix to be provided as specified in the landscape specifications on Sheet L-1.3.
- All landscaping shall be installed in conformance with ANSI Z60.1 the American Standard for Nursery Stock and the accepted standards of the American Association of Nurserymen.
- The Landscape Contractor shall guarantee all plants installed for one full year from date of acceptance by the RaceTrac. All plants shall be alive and at a vigorous rate of growth at the end of the guarantee period. The Landscape Contractor shall not be responsible for acts of God or vandalism.
- Any plant that is determined dead, in an unhealthy or unsightly condition, lost its shape due to dead branches or other symptoms of poor, non-vigorous growth, as determined by the Landscape Architect, shall be replaced by the Landscape Contractor at no cost to RaceTrac.
- General Contractor to mound all parking islands 6" - 10" with clean-screened topsoil.
- Prior to installation, the Landscape Contractor shall inspect the subsgrade, general site conditions, verify elevations, utility locations, irrigation, approve topsoil provided by General Contractor and observe the site conditions under which the work is to be done. Notify General Contractor of any unsatisfactory conditions, and work shall not proceed until such conditions have been corrected and are acceptable to the Landscape Architect, Landscape Contractor and RaceTrac Construction Manager.
- Stake all evergreen and deciduous trees.
- Remove all stakes and guying from all trees after one year from planting.
- Water all plant material that are newly planted thoroughly twice in first 24 hours and apply mulch immediately.
- Site to be 100% irrigated in all planting beds and grass area by an automatic underground irrigation system. See Irrigation Plan Sheets L-2.1, L-2.2, L-2.3.
- All tree protection devices to be installed by General Contractor prior to the start of land disturbance, and maintained until final landscaping.
- All tree protection areas to be protected from sedimentation.
- All tree protection fencing to be inspected daily, and replaced or repaired as needed as instructed by L.A.
- Landscape Contractor shall provide a 1 year maintenance period under separate contract following acceptance by the Landscape Architect and RaceTrac Construction Manager. Maintenance contract to be assigned through RaceTrac maintenance Department.



TEXAS EXCAVATION SAFETY SERVICES  
1-800-344-8377



LOCATION MAP  
N.T.S.

**CITY OF ROCKWALL LANDSCAPE STANDARDS**

SITE DESIGN CRITERIA	REQUIRED	PROVIDED
TOTAL GROSS AREA OF THE SITE	180,140.02 SQ. FT.	
A. SCREENING OF SITE LOADING DOCKS	NONE	NONE
B. ACCEPTABLE LANDSCAPE PLANT MATERIAL MINIMUM 4.0 CALIPER OR GREATER ON ALL REQUIRED TREES	YES	YES
C. PROTECTION OF LANDSCAPE AREAS BY CONCRETE CURBS OR CURB STOPS	YES	YES
D. IRRIGATION REQUIREMENT, ALL REQUIRED TREE LANDSCAPE AREAS TO BE IRRIGATED WITH UNDER GROUND IRRIGATION SYSTEM	YES	YES
E. RIGHT OF WAY STREET LANDSCAPE BUFFERING AREA BETWEEN CURB AND ROAD WAY SURFACES TO BE SEEDED.	YES	YES
H. STREET LANDSCAPE BUFFER REQUIRED IN 20 FOOT WIDE BUFFER (3) CANOPY AND (4) ACCENT TREE PER 100 FEET. ROCK WALL YELLOW JACKET ROAD 200.00 FT	9 CANOPY TREE 12 ACCENT TREE 12 ACCENT TREE	8 CANOPY TREE 12 ACCENT TREE 12 ACCENT TREE
I. PARKING LOT LANDSCAPING MINIMUM 5% OF THE PARKING LOT SHALL BE PLANTED. PLANTING SHALL BE WITHIN 50 FEET OF A LARGE TREE. ADJACENT PARKING LOT TREES	YES	YES
J. SCREENING OF DAMPER AND WALLED BEHIND WALL WITH GATES, REQUIRED	YES	YES
K. REQUIRED LANDSCAPE AREA ON SITE. USE COMMERCIAL USES. SITE IS APPROX. SITE AREA = 125,210 SQ. FT.	16,082 SQ FT	28,868 SQ FT, 23%
L. PARKING LOTS SHALL PROVIDE 1 TREE PER 10 PARKING SPACES, (44) PARKING SPACES, TREES ALLOCATED PER AREA.	5 TREE	5 TREE

**LANDSCAPE IRRIGATION WARRANTEE**

LANDSCAPE CONTRACTOR SHALL WARRANT ALL PLANT MATERIAL FOR A PERIOD OF ONE YEAR FROM TIME OF FINAL ACCEPTANCE AND PAYMENT OF THE BALANCE OF THE CONTRACT. IRRIGATION SYSTEM SHALL BE WARRANTED FOR ONE YEAR PARTS AND LABOR FOR NEW ITEMS.

**ROOT BARRIERS AT UTILITIES AND PAVING EDGES**

1. NO TREE SHALL BE PLANTED WITHIN 8 FEET OF ALL UTILITIES.  
2. ROOT BARRIERS ARE REQUIRED ON ALL TREES WITHIN UTILITY EASEMENTS AND AT EDGE OF PAVED ROAD AND DRIVEWAYS ON ALL TREES SHOWN UNLESS NOTED.  
3. DEEP ROOT BARRIERS, 1-800-408-7686, INSTALL 18-48-2 PER SPECIFICATIONS AT EACH TREE ON SIDE OF PAVED UTILITY, INCLUDE 4" WIDE 1/4" DRAIN GRAVEL ON OUT SIDE OF BARRIER, 24" DEEP BARRIER TO EXTEND 1" ABOVE GRADE.

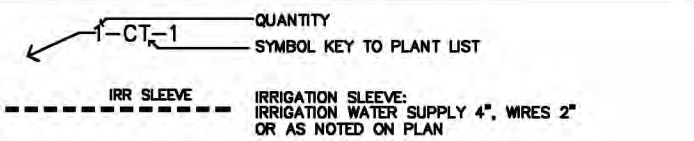
**CITY OF ROCKWALL MAINTENANCE NOTE:**

MAINTENANCE: THE CURRENT OWNER AND SUBSEQUENT OWNERS OF THE LANDSCAPED PROPERTY, OR MANAGER OR AGENT OF THE OWNER, SHALL BE RESPONSIBLE FOR MAINTENANCE OF ALL LANDSCAPED AREAS AND MATERIALS RESOURCES AT ALL TIMES AND SHALL BE KEPT FREE OF REFUSE AND DEBRIS. MAINTENANCE WILL INCLUDE REPLACEMENT OF ALL DEAD PLANT MATERIAL IF THAT MATERIAL WAS USED TO MEET THE REQUIREMENTS OF THE UDC. ALL SUCH PLANTS SHALL BE REPLACED WITHIN (60) SIX MONTHS OF NOTIFICATION, OR BY THE NEXT PLANTING SEASON, WHICH EVER COMES FIRST. A PROPERTY/OWNER'S ASSOCIATION MAY ASSUME RESPONSIBILITY FOR MAINTENANCE OF COMMON AREAS.

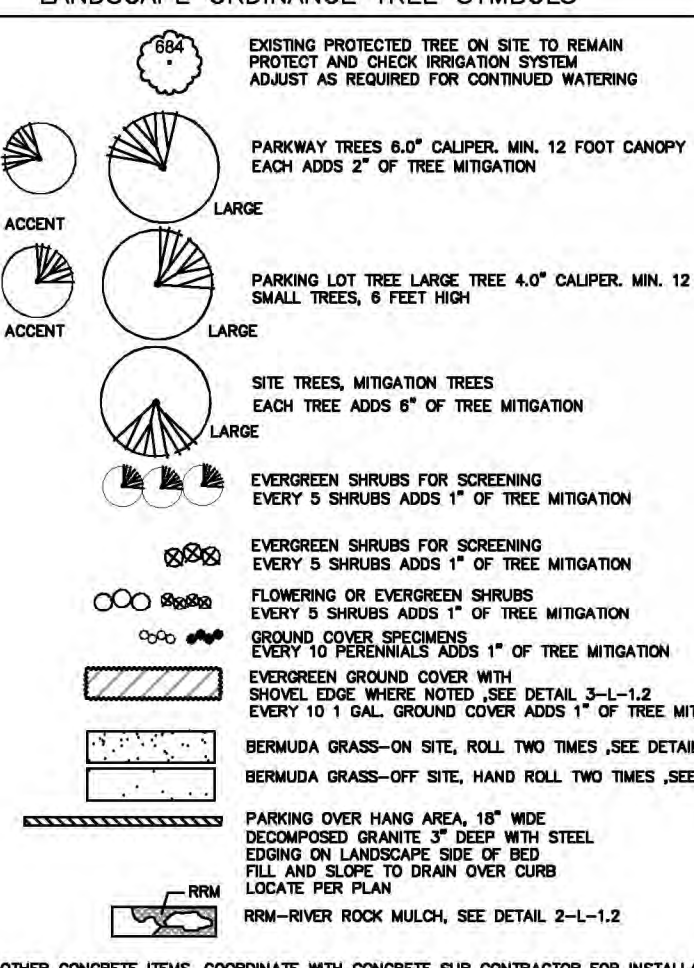
**IRRIGATION AFFIDAVIT**

ALL REQUIRED LANDSCAPE AREAS SHALL BE PROVIDED WITH AN AUTOMATIC UNDERGROUND IRRIGATION SYSTEM WITH RAIN AND FREEZE SENSORS AND EVAPOTRANSPIRATIVE (ET) WEATHER BASED CONTROLLER AND SAID IRRIGATION SYSTEM SHALL BE DESIGNED BY A QUALIFIED PROFESSIONAL AND INSTALLED LICENSED IRRIGATOR.

**LANDSCAPE PLAN LEGEND**



**LANDSCAPE ORDINANCE TREE SYMBOLS**



**SELECTED PLANT LIST**

QUANTITY	SYMBOL KEY	CANOPY	COMMON NAME	BOTANICAL NAME	SIZE
25	CT-1	BALD CYPRESS	TAXODIUM DISTICHUM	SINGLE TRUNK, 200 GAL, 6-6.5" CAL., 16-18 FT CANOPY HEIGHT	
0	CT-2	LIVE OAK	QUERCUS VIRGINIANA	SINGLE TRUNK, 200 GAL, 6-6.5" CAL., 16-18 FT CANOPY HEIGHT	
17	CTM-3	BALD CYPRESS	TAXODIUM DISTICHUM	SINGLE TRUNK, 200 GAL, 6-6.5" CAL., 16-18 FT CANOPY HEIGHT	
0	CTM-4	LIVE OAK	QUERCUS VIRGINIANA	SINGLE TRUNK, 200 GAL, 6-6.5" CAL., 16-18 FT CANOPY HEIGHT	
14	CTM-5	BALD CYPRESS	TAXODIUM DISTICHUM	SINGLE TRUNK, 100 GAL, 4-4.5" CAL., 12-14 FT CANOPY HEIGHT	
24	AT-1	ACCENT TREES	RED BUD SINGLE TRUNK "OKLAHOMA" SHRUBS, EVERGREEN	CERCIS CANADENSIS, RED LEAF	100 GAL, 4.0-4.5" CAL., 10-12 HIGH, SINGLE TRUNK TREES, CLEAR 6 FEET
375	SH-1	DWARF BURFORD HOLLY	ILEX CORNUTA, BURFORD	5 GAL, 36" HIGH, FULL HEAD, PLANT 1" HIGH AND MULCH, PRUNE LEVEL	
93	SH-2	INDIAN HAWTHORN, WHITE	RAIPALLOPSIS INDICA	5 GAL, 16-24" HIGH, FULL HEAD, PLANT 1" HIGH AND MULCH	
0	SH-3	NELLIE R STEVENS	ILEX OPACA, N.R. STEVENS	45 GAL, 50-60" HIGH AT TIME OF PLANTING, FULL TO GROUND	
42	SH-5	DWARF YALPORN HOLLY	ILEX MONTEREA NANA	5 GAL, 16" HIGH, FULL HEAD, PLANT 1" HIGH AND MULCH	
0	SH-6	KNOCK OUT ROSE, DOUBLE RED	ROSAEA, KNOCK OUT SPECIES, RED	5 GAL, 16" HIGH, FULL HEAD, PLANT 1" HIGH AND MULCH	
61	PR-1	PERENNIALS ALL GET BED PREPARATION AND 3" MULCH	CARPET ROSES, RED	3 GAL, FULL LOW, DOUBLE FLOWER	
45	PR-2	PERENNIALS ALL GET BED PREPARATION AND 3" MULCH	VARGATED YUCCA	YUCCA GEORGICA VARGATED	
328	PR-3	PERENNIALS ALL GET BED PREPARATION AND 3" MULCH	MEXICAN FEATHER GRASS	STIPA TENUSSIMA	
6825	GC-1	GROUND COVERS ALL GET BED PREPARATION AND 3" MULCH	PURPLE WINTER CREEPER	EUONYMUS FORTUNEI COLORATA	1 GAL WITH 3" MULCH.
4,980 SQ FT	BO-1	BERMUDA GRASS	BERMUDA GRASS, OFF SITE	CYNODON DACTYLON, CYNODON DACTYLON,	SOLID SOO, ROLLED SAME DAY AS INSTALLED
48,900 SQ FT	BO-2	MISC ITEMS	RIVER RAINBOW MULCH, SEE SPECS	CONCRETE BAND, SEE DETAILS	SOLID SOO, ROLLED SAME DAY AS INSTALLED
1,335 SQ FT	RRM	RRM-RIVER BARK MULCH, SEE DETAIL 2-1-1.2			

**MITIGATION NOTES** SEE TREE PRESERVATION PLAN L-1 AND MITIGATION TREE CHART L-1.2

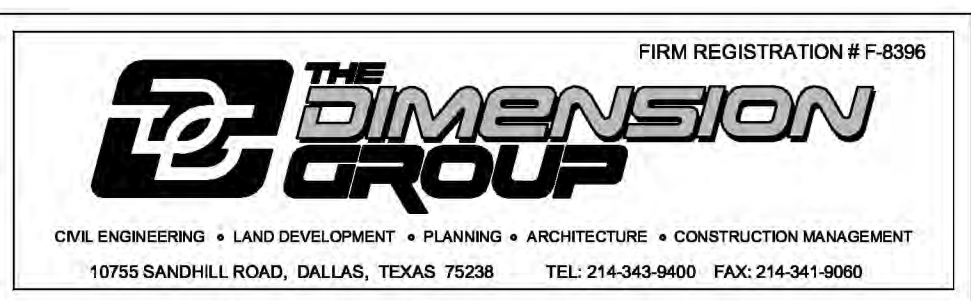
- TREE MITIGATION ON THIS PROJECT IS PROVIDED BY THE FOLLOWING.  
A. INCREASING THE SIZE OF REQUIRED CANOPY TREES FROM 4" TO 6" CALIPER, PROVIDING 2" OF MITIGATION EACH.

LANDSCAPE ARCHITECT  
T.H.PRITCHETT ASSOCIATES  
1218 CAMINO LAGO  
IRVING, TEXAS 75039  
214-697-2580  
WWW.LANDDESIGNPLAN.COM  
tom@landdesignplan.com

DEVELOPER  
RACE TRAC  
3225 CUMBERLAND BLVD.,  
SUITE 100  
ATLANTA, GA 30339  
CONTACT: DREW  
CUNNINGHAM  
TEL: X

APPLICANT/ENGINEER  
THE DIMENSION GROUP  
TBPE FIRM # F-8396  
10755 SANDHILL ROAD  
DALLAS, TEXAS 75238  
CONTACT: KARTAVYA PATEL, P.E.  
TEL: (214) 343-9400  
FAX: (214) 341-9060

SURVEYOR  
TEXAS HERITAGE SURVEYING LLC.  
10610 METRIC DRIVE  
SUITE 124  
DALLAS, TEXAS 75243  
CONTACT: GARY E. JOHNSON, R.P.L.S.  
TEL: (214) 340-9700



**LANDSCAPE PLAN  
WOODS AT ROCKWALL ADDITION  
LOT 1R & 2R, BLOCK A  
IN THE CITY OF ROCKWALL,  
ROCKWALL COUNTY, TEXAS**

DATE: 12/02/2013  
BY: RP

NO. 1  
REVISIONS  
LANDSCAPE PLAN EXHIBIT

THE SEAL APPEARING ON THIS DOCUMENT WAS AUTHORIZED BY T.H. PRITCHETT, R.L.A. NO. 2115 ON 10/26/2013

**Racetac**  
THESE PLANS ARE SUBJECT TO FEDERAL COPYRIGHT LAWS. ANY USE OF SAME WITHOUT THE EXPRESSED WRITTEN PERMISSION OF RACETRAC CONSTRUCTION MANAGEMENT, INC. IS PROHIBITED.

**Racetac**  
RACETRAC PETROLEUM, INC.  
300 TECHNOLOGY COURT  
SMYRNA, GEORGIA 30082  
(770) 451-7600

LANDSCAPE PLAN  
RACETRAC SERVICE STATION  
2205 RIDGE ROAD  
ROCKWALL, TEXAS  
SCALE: 1"=30'  
DRAWN BY: THP  
DATE: 12/03/13  
DWG NO.:

L-1  
SHEET NO. REV.

RACETRAC - 2205 RIDGE ROAD, ROCKWALL, TEXAS - TDG JOB NO. 12128













**GTP**  
 Consulting Engineers  
 2400 Pleasant Hill Rd, Suite 310  
 Duluth, GA 30096  
 (p) 770.622.2270 (f) 770.622.2271

**ISSUE/REVISION RECORD**  
 DATE DESCRIPTION

12/02/13 PERMIT ISSUE



RACETRAC PETROLEUM, INC.  
 3225 CUMBERLAND BOULEVARD  
 SUITE 100  
 ATLANTA, GEORGIA 30339  
 (770) 451-7600

PROJECT NAME

**ROCKWALL**

**ROCKWALL TEXAS**  
 2205 RIDGE ROAD  
 ROCKWALL, TEXAS

RACETRAC PROJECT NUMBER

**1090**

PROTOTYPE SERIES

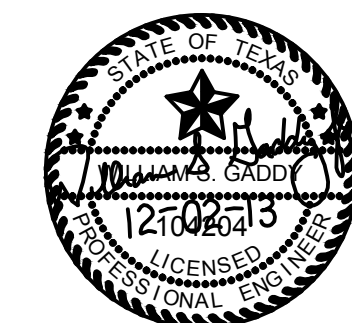
2013 BR-LH-M0(G) XXXX

PLAN MODIFICATION NOTICE

SPB NO. TBD DATE TBD

STANDARD PLAN BULLETINS (SPB) MODIFY THE PROTOTYPE SERIES SET NOTED ABOVE. THE LISTED SPB REPRESENTS THE LATEST MODIFICATION INCORPORATED TO THIS PROTOTYPE SERIES SET AT ORIGINAL RELEASE. THE ISSUE/REVISION RECORD COLUMN ABOVE LISTS ANY REVISIONS OR SPB INCORPORATED IN THIS SET AFTER THE ORIGINAL RELEASE. CONTACT RACETRAC ENGINEERING AND CONSTRUCTION FOR ANY SUBSEQUENT BULLETINS NOT INCORPORATED HEREIN.

PROFESSIONAL SEAL



PROJECT NUMBER

13-610

SHEET TITLE

**SITE PHOTOMETRY PLAN**

SHEET NUMBER

**SP-1**

ISSUED FOR CONSTRUCTION

**LUMINAIRE SCHEDULE**

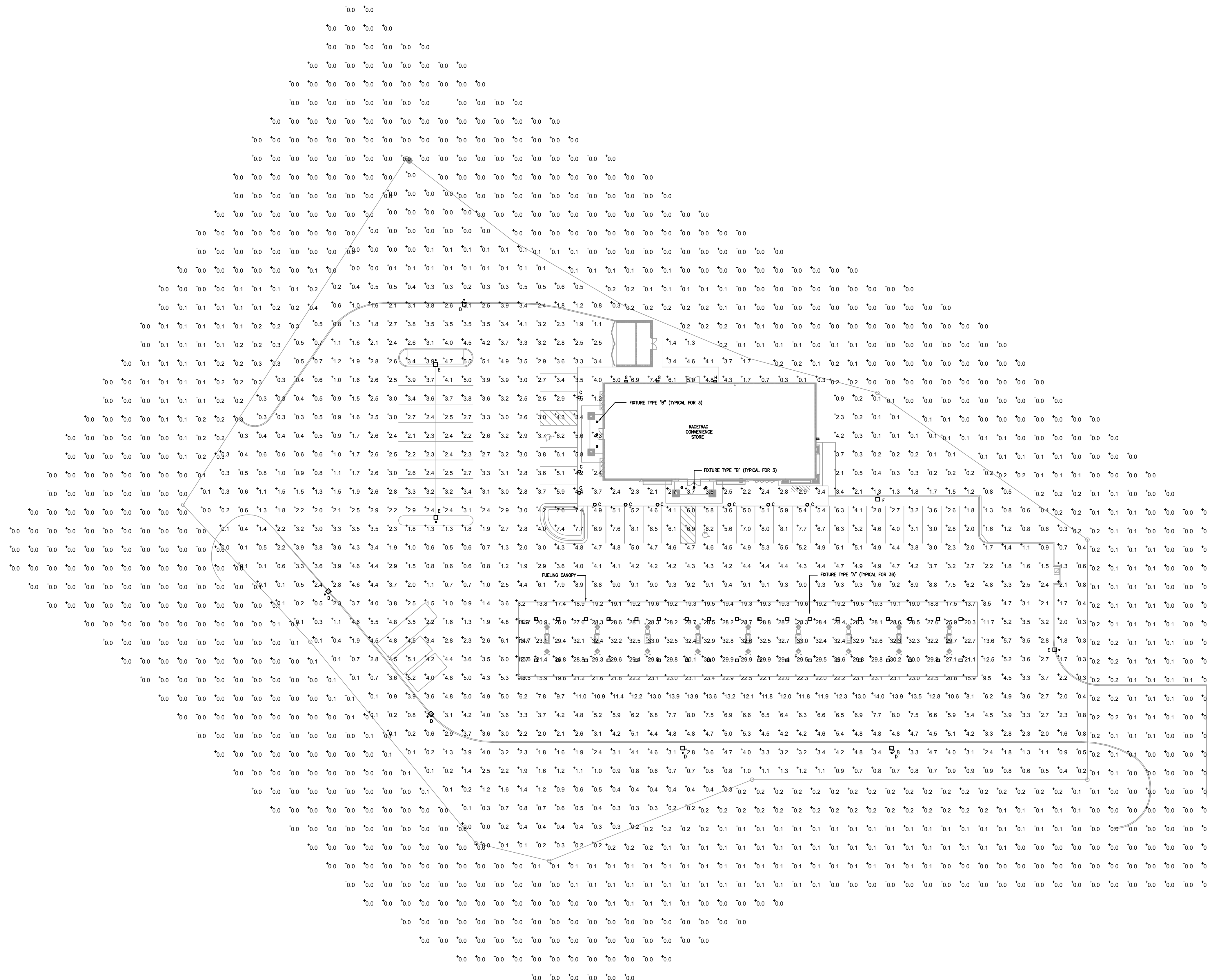
Symbol	Label	Qty	Catalog Number	Description	Lamp	File	Lumens	LF	Watts
□	A	36	CAN-304-SL-11-06-D-UL-700 or BKCPHED-UD (700wa)	60 LED 700wa 6000K PETROLEUM SPARKLE 304 SERIES CANOPY	SIXTY WHITE LIGHT EMITTING DIODES	CAN-304-SL-11-06-D-UL-700-40KIES	Absolute	0.90	130.3
○	B	6	A2/B1-05	WITH WHITE TRIM AND RECESSED WHITE PLASTIC LENS	LEDS, LUMEN RATING = 648 LMS.	LRE.lens	Absolute	0.90	11.5
○	C	9	PROV-13-33LED-5100K-700MA	PROVIDENCE LED DIE-CAST ALUMINUM HOUSING.	32 2198 DIODES, 5100K	PROV-13-33LED-SK-700IES	Absolute	0.90	75.6
□	D	5	ARE-EHO-2MB-AA-12-D-UL-1000-40K -2 (1000wa)	CONFIGURED FROM 40 LED TYPE II MEDIUM 1000wa LEDWAY	CONFIGURED FROM FORTY WHITE LIGHT EMITTING DIODES	ARE-EHO-2MB-AA-12-D-UL-1000-40K-	Absolute	0.90	426
□	E	3	ARE-EHO-4MB-AA-12-D-UL-700-40K -3 (700wa)	CONFIGURED FROM 40 LED TYPE II MEDIUM 700wa LEDWAY WITH	CONFIGURED FROM FORTY WHITE LIGHT EMITTING DIODES	ARE-EHO-4MB-AA-12-D-UL-700-40K-	Absolute	0.90	271
□	F	1	ARE-EHO-2MB-AA-12-D-UL-700-40K -5 (700wa)	CONFIGURED FROM 40 LED TYPE II MEDIUM 700wa LEDWAY WITH	CONFIGURED FROM FORTY WHITE LIGHT EMITTING DIODES	ARE-EHO-2MB-AA-12-D-UL-700-40K-	Absolute	0.90	91.3
□	G	2	SEC-EDG-AM-WM-04-04-UL-700-40K SECURITY	40 LED TYPE II MEDIUM 700wa 4000K EDGE SECURITY	FORTY WHITE LIGHT EMITTING DIODES	SEC-EDG-AM-WM-04-04-UL-700-40KIES	Absolute	0.90	92
□	H	1	SEC-EDG-2SB-WM-04-D-12-350-40K (350wa)	CONFIGURED FROM 40 LED TYPE II SHORT 350wa 4000K EDGE	FORTY WHITE LIGHT EMITTING DIODES	SEC-EDG-2SB-WM-04-D-UL-350-40KIES	Absolute	0.90	25

**STATISTICS**

Description	Symbol	Avg	Max	Min	Max/Min	Avg/Min
Fuel Canopy	+	24.5 ft	33.0 ft	8.2 ft	4.0:1	3.0:1
Property	+	0.0 ft	0.2 ft	0.0 ft	N / A	N / A
Site	+	3.0 ft	14.7 ft	0.0 ft	N / A	N / A

**GENERAL NOTES**

- ALL FIXTURES UTILIZED IN THIS SITE PHOTOMETRIC PLAN ARE FULL CUTOFF.
- MOUNT AREA LUMINAIRE TYPES "D", "E" & "F" AT 28'-0" AFG (INCLUDING POLE BASE).



1 SITE PHOTOMETRY PLAN  
 SP-1 SCALE: 1" = 30'-0"