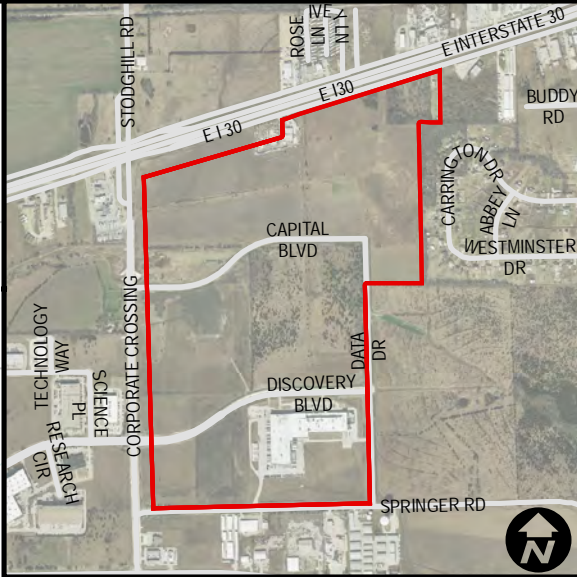
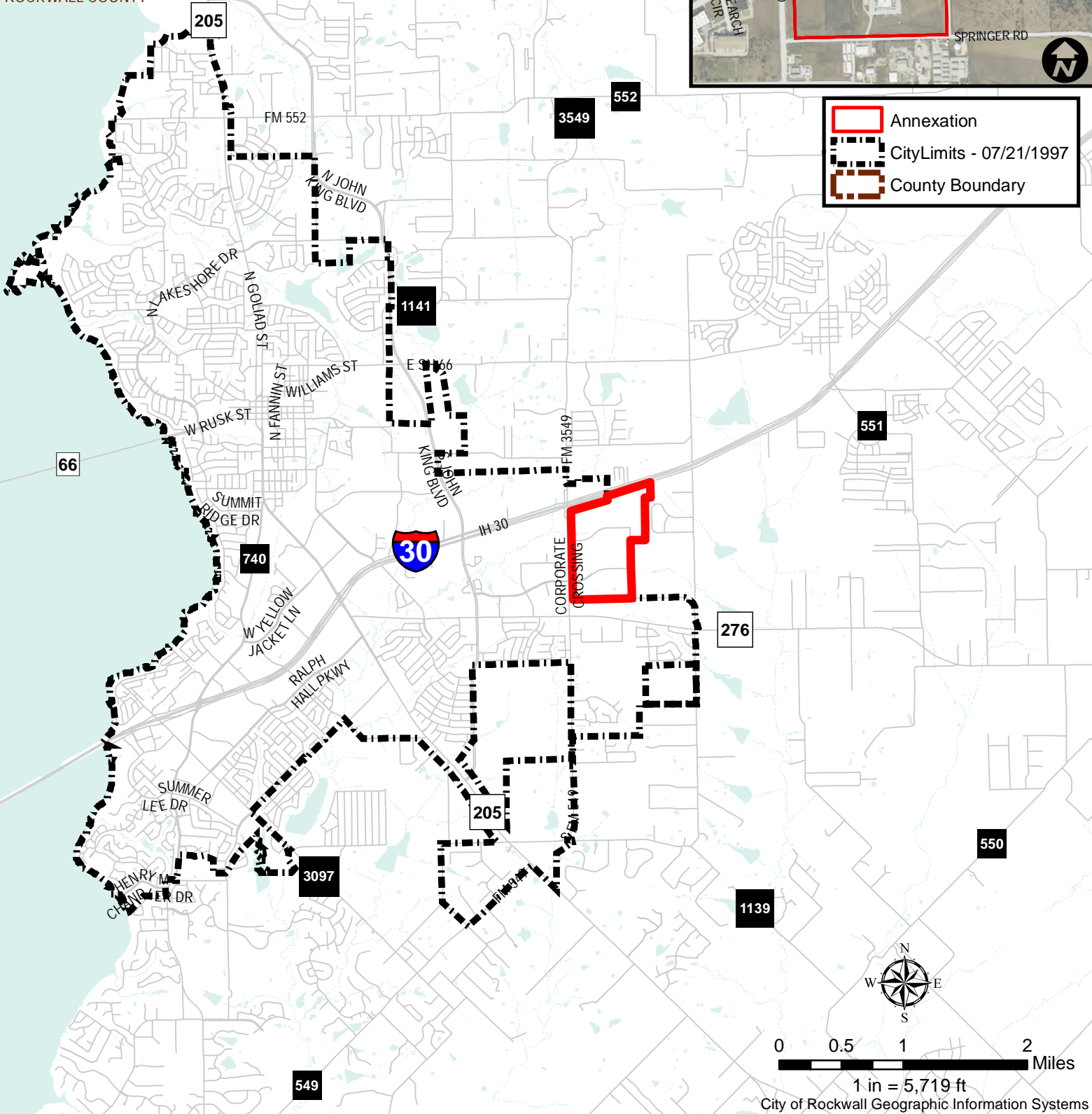


City Annexations

Ordinance Number: 97-14, T1
 Date: 7/21/1997
 Location: SPRINGER RD & FM549

COLLIN COUNTY
 ROCKWALL COUNTY



Annexation
City Limits - 07/21/1997
County Boundary

0 0.5 1 2 Miles
 1 in = 5,719 ft
 City of Rockwall Geographic Information Systems

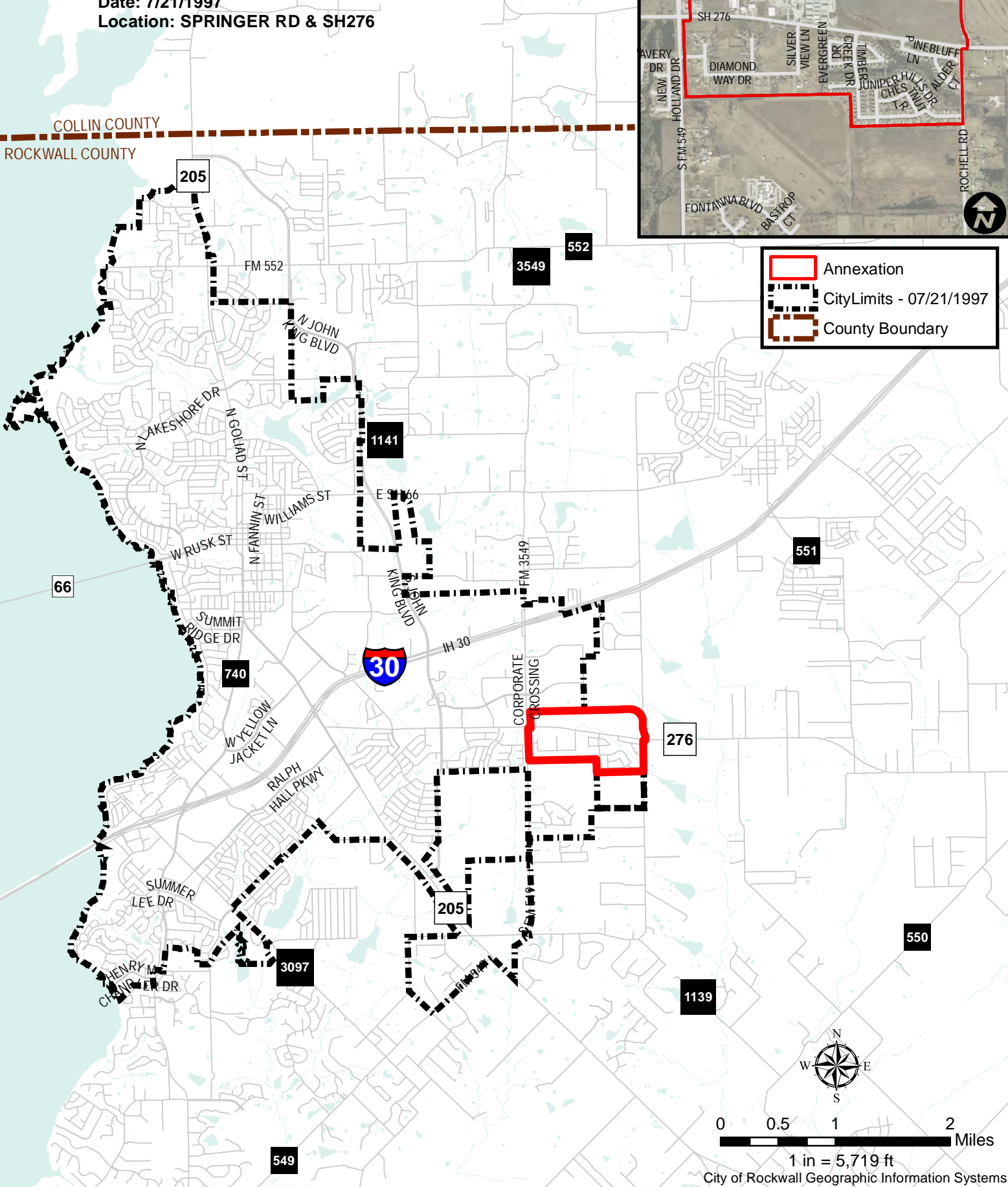
City Annexations

Ordinance Number: 97-14, T2
 Date: 7/21/1997
 Location: SPRINGER RD & SH276

COLLIN COUNTY
 ROCKWALL COUNTY



- Annexation
- City Limits - 07/21/1997
- County Boundary



City Annexations

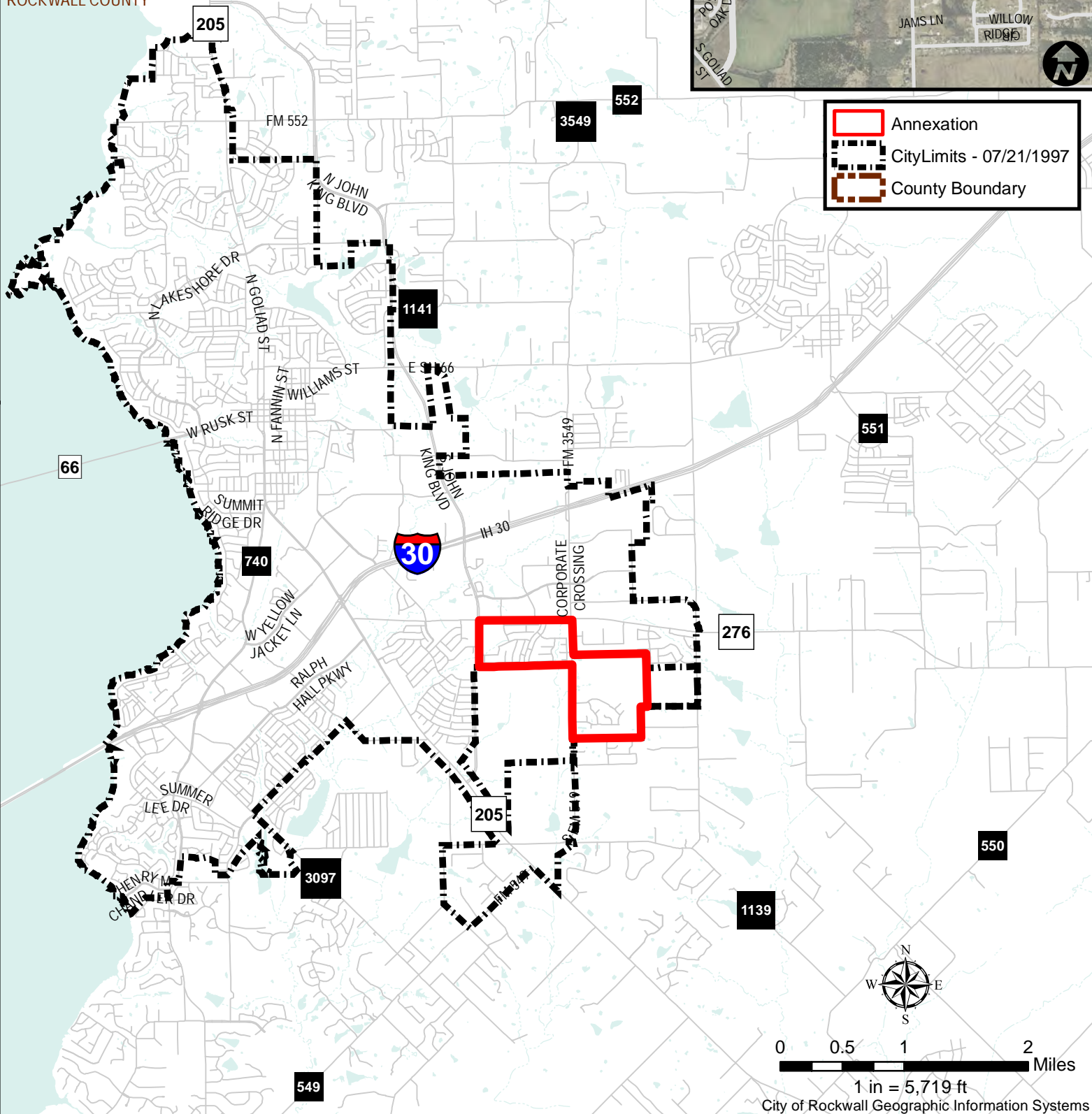
Ordinance Number: 97-14, T3

Date: 7/21/1997

Location: SH276 & FM549



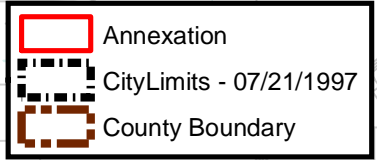
COLLIN COUNTY
ROCKWALL COUNTY






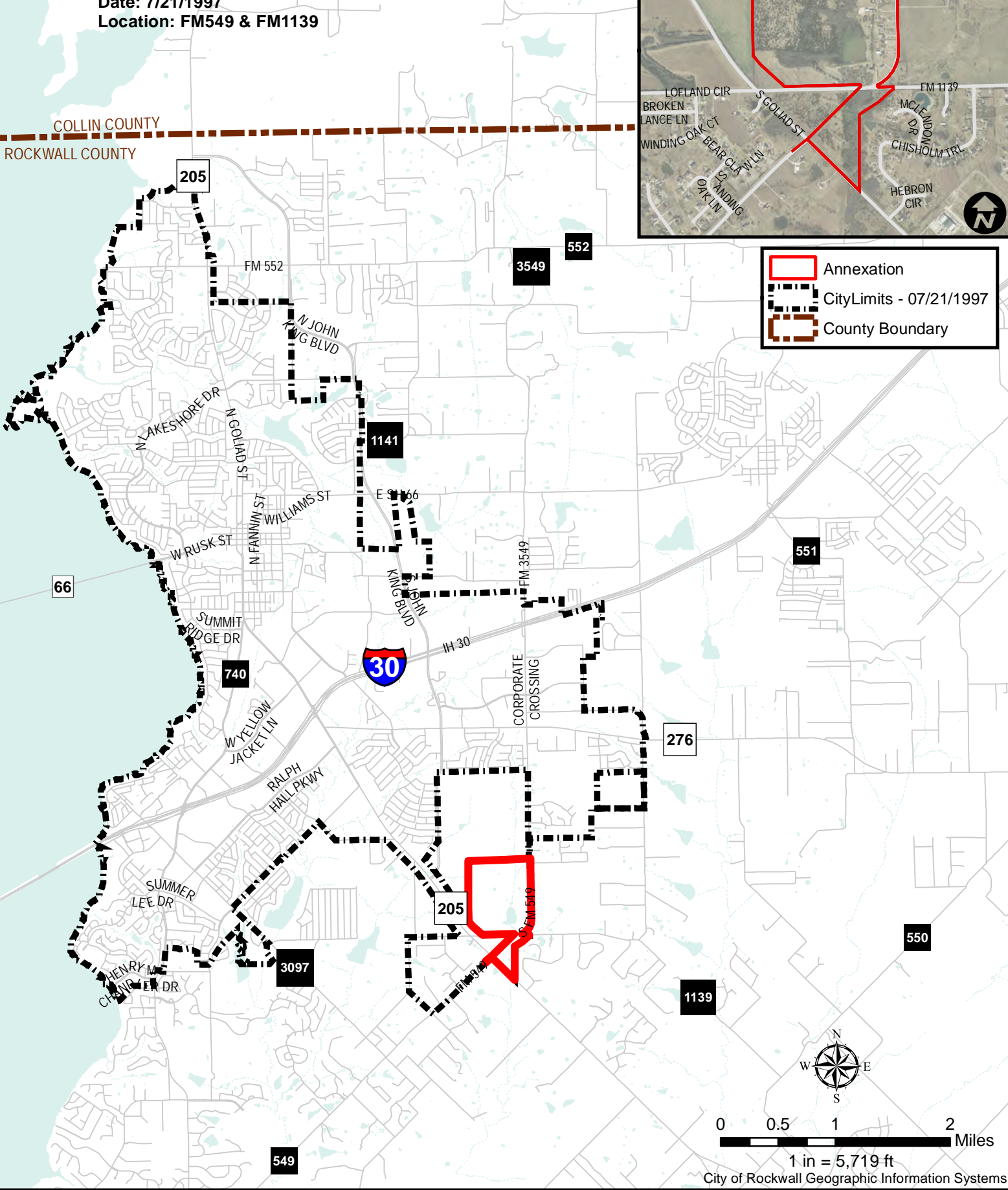
City Annexations

Ordinance Number: 97-14, T4
Date: 7/21/1997
Location: FM549 & FM1139

COLLIN COUNTY
ROCKWALL COUNTY

-  Annexation
-  City Limits - 07/21/1997
-  County Boundary

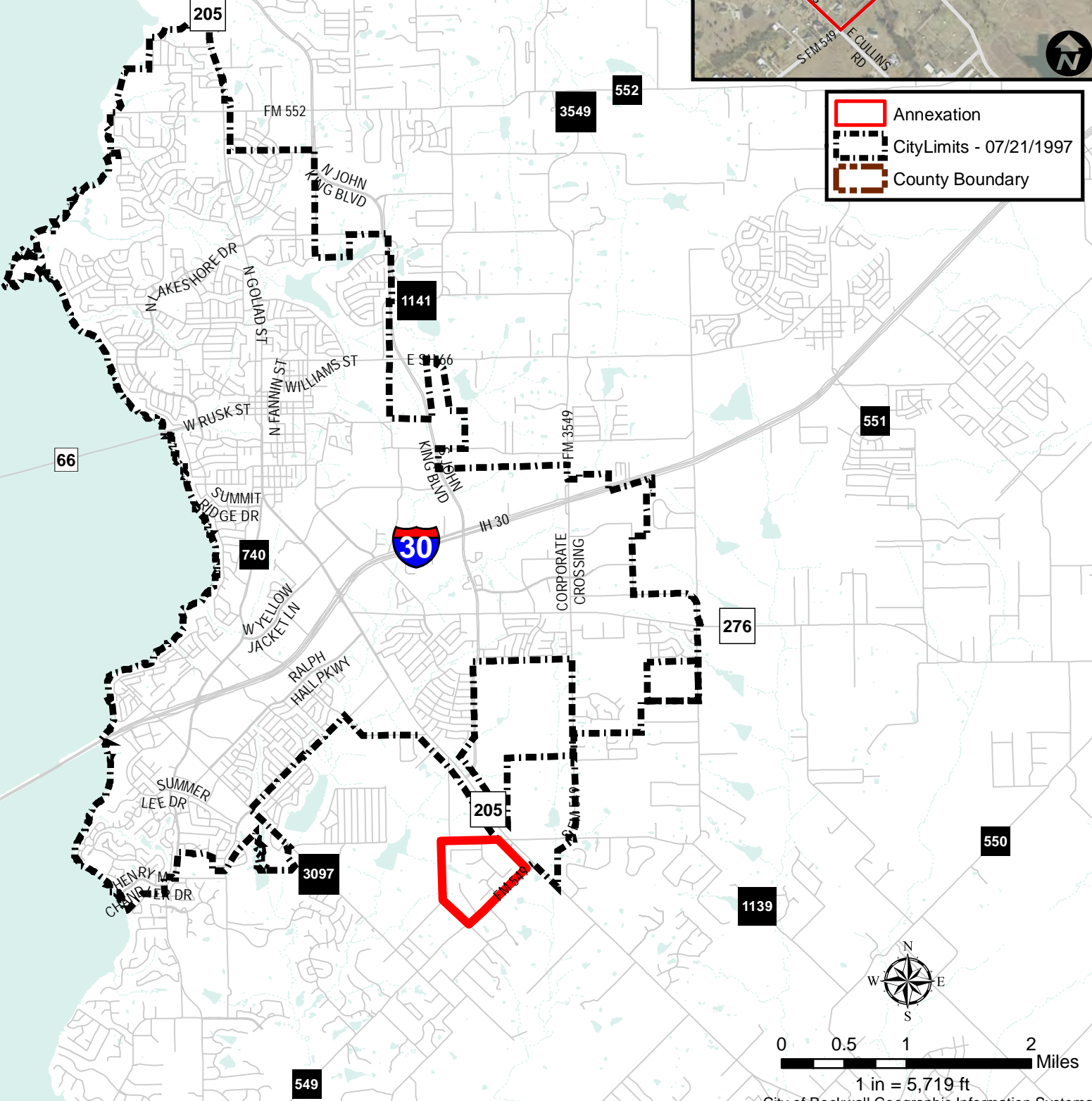


City Annexations

Ordinance Number: 97-14, T5
 Date: 7/21/1997
 Location: OAKS OF BUFFALO WAY



COLLIN COUNTY
 ROCKWALL COUNTY



- Annexation
- City Limits - 07/21/1997
- County Boundary



1 in = 5,719 ft