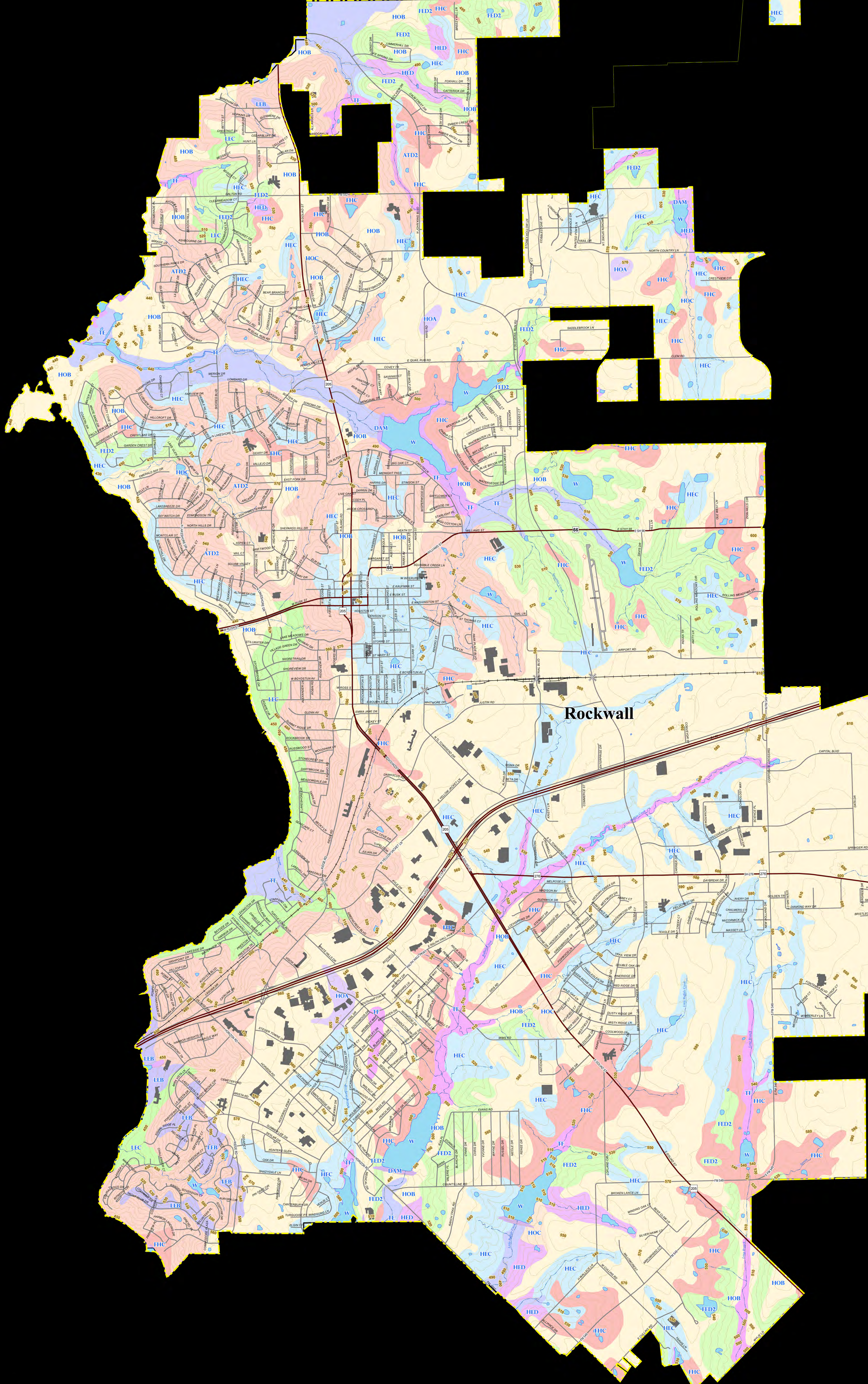




City of Rockwall SOIL TYPE MAP 2014

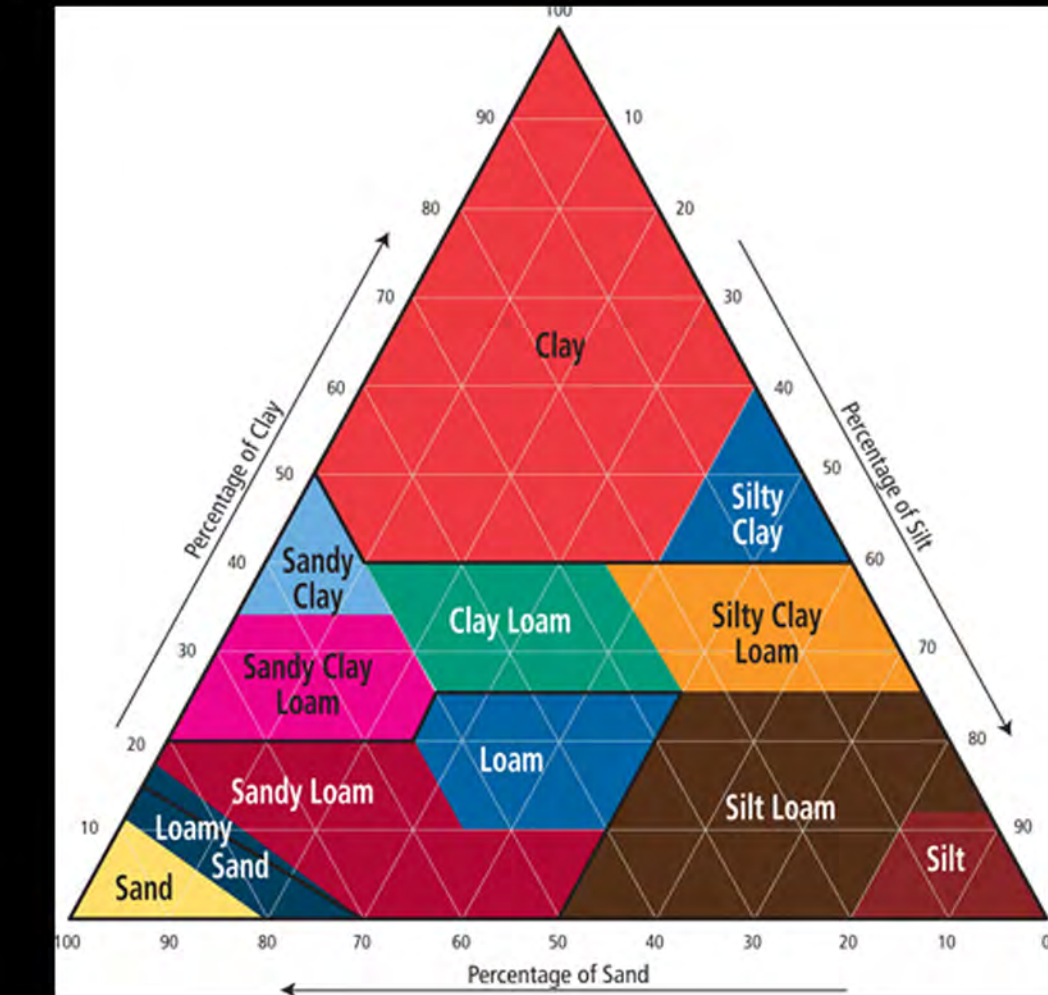


SOIL TYPES

AtD2	CrC2	HeD	LeB	SIB
Au	DAM	HoA	LeC	Te
AxB	ESD	HoB	Lu	TF
AxC2	FeD2	HoC	M-W	W
AxD	FhC	Ka	MaA	WsA
BP	GP	Kb	MaB	WsB
BuA	Gc	Ke	NoC2	WsC2
BuB	Gf	Kf	QU	
CYP	HAD	KoB	RP	
CrB	HeC	KoC	SM	

MAJOR BUILDINGS (25000 SF +)

SOIL TEXTURE PYRAMID



SOIL SURVEY GEOGRAPHIC DATASET (SSURGO)

DATA SOURCE:
TEXAS NATURAL RESOURCES INFORMATION SYSTEM;
NATURAL RESOURCES CONSERVATION SERVICE (NRCS);
NATIONAL COOPERATIVE SOIL SURVEY;
NORTH CENTRAL TEXAS COUNCIL OF GOVERNMENTS;
CITY OF ROCKWALL GEOGRAPHIC INFORMATION SYSTEMS

AtD2	Altoga silty clay, 3 to 12 percent slopes, eroded
Au	Aufco soils, frequently flooded
AxB	Axtell fine sandy loam, 1 to 4 percent slopes
AxC2	Axtell fine sandy loam, 2 to 5 percent slopes, eroded
AxD	Axtell fine sandy loam, 5 to 12 percent slopes
BuA	Burleson clay, 0 to 1 percent slopes
BuB	Burleson clay, 1 to 3 percent slopes
CrB	Crockett fine sandy loam, 1 to 3 percent slopes
CrC2	Crockett fine sandy loam, 2 to 5 percent slopes, eroded
ESD	Ellis clay, 5 to 12 percent slopes
FeD2	Ferris clay, 5 to 12 percent slopes, eroded
FhC	Ferris-Heiden complex, 2 to 5 percent slopes
Gc	Gowen clay loam, occasionally flooded
Gf	Gowen clay loam, frequently flooded
HAD	Chickasha, loamy, 5 to 12 percent slopes
HeC	Heiden clay, 3 to 5 percent slopes
HeD	Heiden clay, 5 to 8 percent slopes
HoA	Houston Black clay, 0 to 1 percent slopes
HoB	Houston Black clay, 1 to 3 percent slopes
HoC	Houston Black clay, 3 to 5 percent slopes
Ka	Kaufman clay, occasionally flooded
Kb	Kaufman clay, frequently flooded
Ke	Kemp loam, occasionally flooded
Kf	Kemp loam, frequently flooded
KoB	Konawa loamy fine sand, 1 to 3 percent slopes
KoC	Konawa loamy fine sand, 3 to 8 percent slopes
LeB	Lewisville silty clay, 1 to 3 percent slopes
LeC	Lewisville silty clay, 3 to 8 percent slopes
Lu	Lufkin-Rader complex
MaA	Mabank fine sandy loam, 0 to 1 percent slopes
MaB	Mabank fine sandy loam, 1 to 3 percent slopes
NoC2	Normangee clay loam, 2 to 8 percent slopes, eroded
SIB	Styx-Nimrod complex, 0 to 3 percent slopes
Te	Trinity clay, occasionally flooded
TF	Trinity clay, frequently flooded
W	Water
WsA	Wilson silt loam, 0 to 1 percent slopes
WsB	Wilson silt loam, 1 to 3 percent slopes
WsC2	Wilson clay loam, 2 to 5 percent slopes, eroded
BP	Pits, borrow
CYP	Pits, clay
DAM	Dams
GP	Pits, gravel
QU	Quarry
M-W	Miscellaneous water
RP	Pits, rock
SM	Strip mine

Rockwall



OCTOBER 2, 2014



ROCKWALL GEOGRAPHIC INFORMATION SYSTEMS

"The data represented on this map was obtained with the best methods available. Data is supplied from various sources and accuracy may be out of the City of Rockwall's control. The verification of accuracy and / or content lies entirely with the end user. The City of Rockwall does not guarantee the accuracy of contained information. All information is provided 'As Is' with no warranty being made, either expressed or implied."

