

1 POOL DIMENSION PLAN
SCALE: 1/4" = 1'-0"



© COPYRIGHT 2020 THE CITY OF SAN ANTONIO. ALL RIGHTS RESERVED. REPRODUCTION IS PROHIBITED.

DESIGNED BY: DMG TAB
PROJECT NO.:
ISSUE DATE: OCT 12, 2020

BRANNON CORP
AQUATIC CONSULTANTS

MILLIS DEVELOPMENT & CONSTRUCTION
TRAILS OF LAVON
731 RIVER LANE
LAVON, TEXAS
POOL DIMENSION PLAN

NO.	DATE	REVISION

PREPARED FOR:
PERMIT REVIEW
AND
CONSTRUCTION

PROJECT NO.: 23120
SP1.1

DESIGNED BY: DMH TAB
 ISSUE DATE: OCT 12, 2023



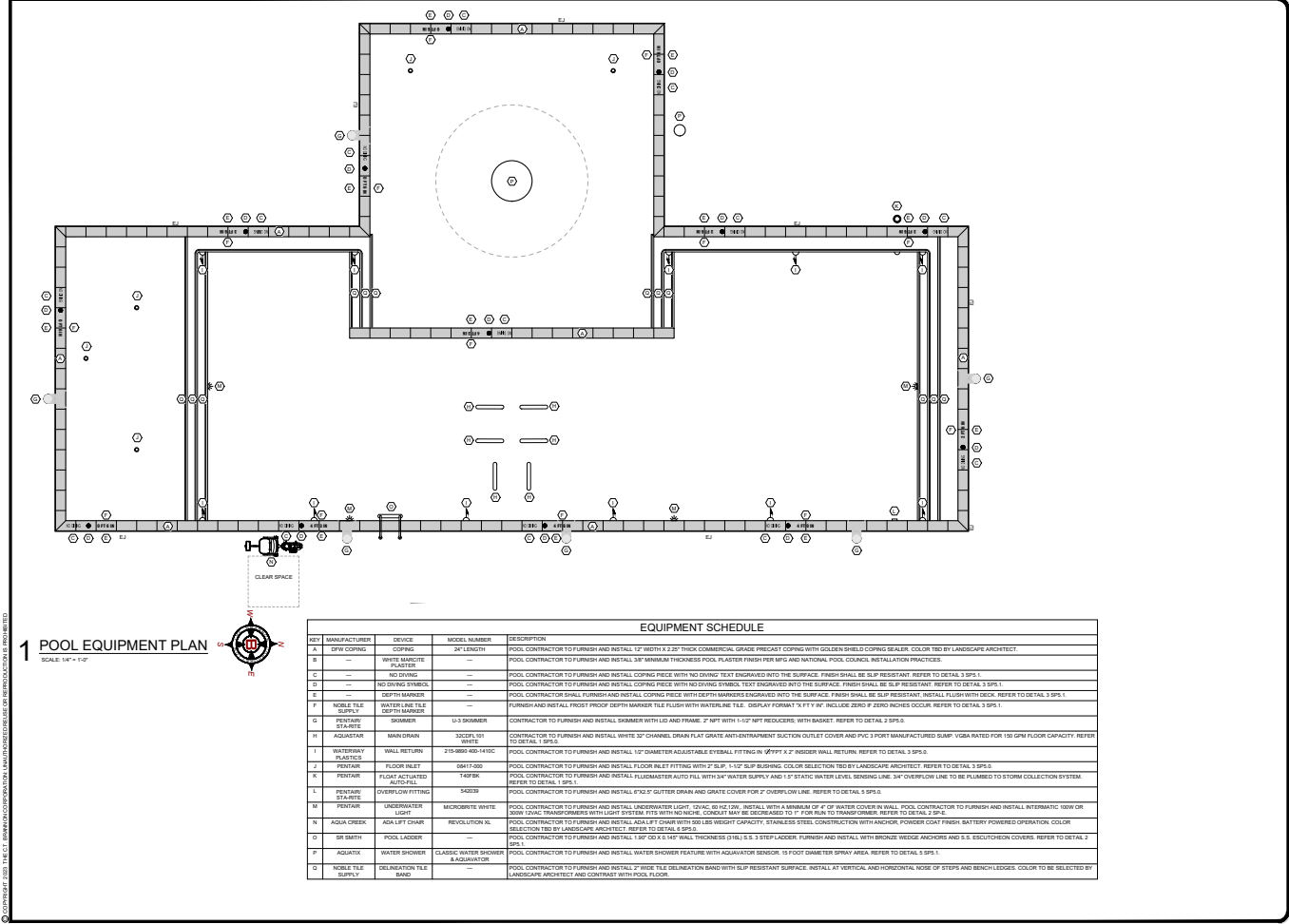
BRANNON CORP
 AQUATIC CONSULTANTS

MILLS DEVELOPMENT & CONSTRUCTION
 TRAILS OF LAVON
 731 RIVER LANE
 LAFON, TEXAS
 POOL EQUIPMENT PLAN

REVISIONS
 NO. DATE REVISION

PREPARED FOR: PERMIT REVIEW AND CONSTRUCTION

PROJECT NO: 23120
 SHEET NO: SP1.1

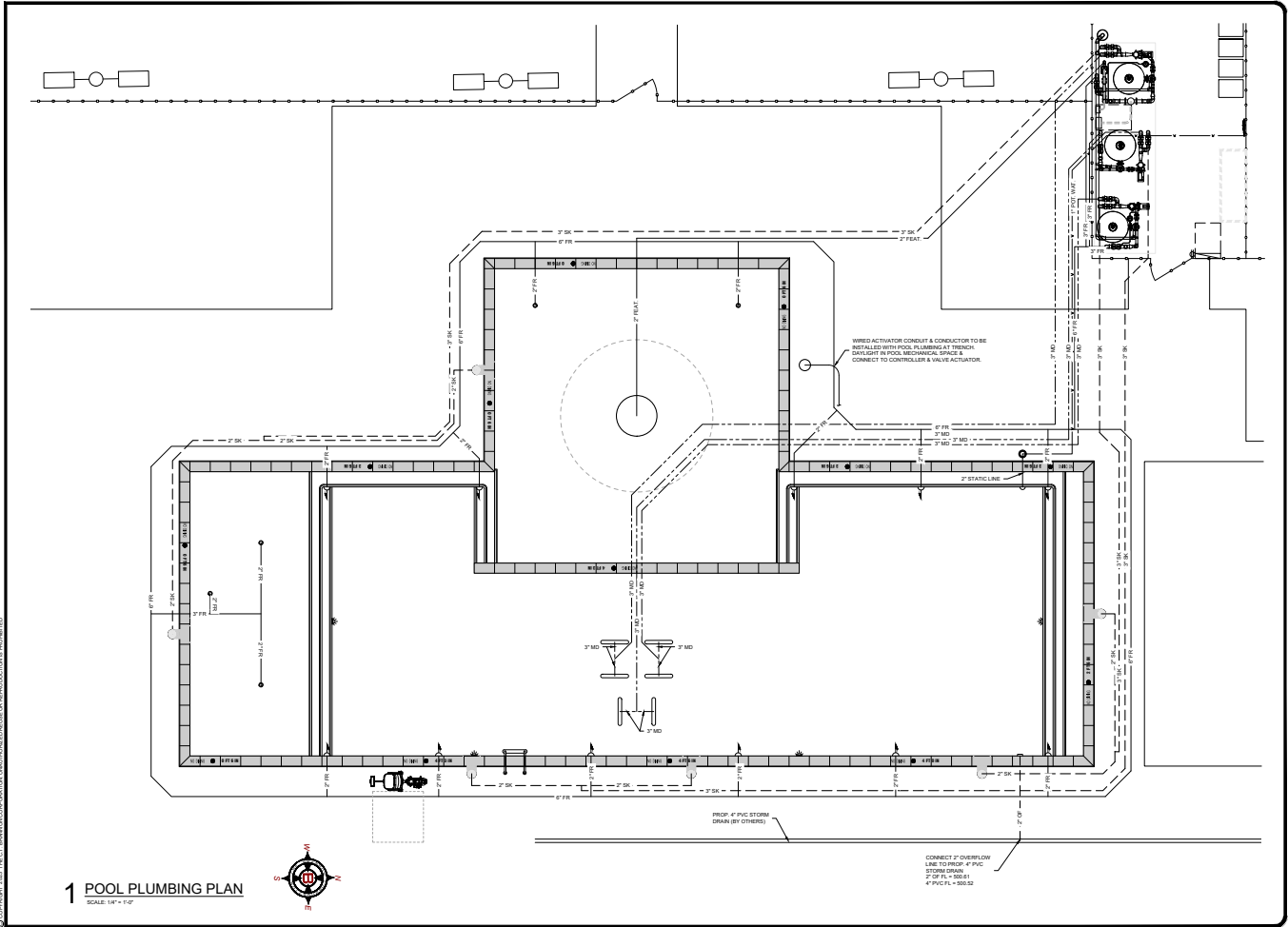


1 POOL EQUIPMENT PLAN
 SCALE: 1/8" = 1'-0"



EQUIPMENT SCHEDULE				
KEY	MANUFACTURER	DEVICE	MODEL NUMBER	DESCRIPTION
A	EIFW	COPING	24" LENGTH	POOL CONTRACTOR TO FURNISH AND INSTALL 1 1/2" WIDTH X 2 1/2" THICK COMMERCIAL GRADE PRECAST COPING WITH GOLDEN SHIELD COPING SEALER. COLOR TBD BY LANDSCAPE ARCHITECT.
B	---	WHITE CERAMIC PLASTER	---	POOL CONTRACTOR TO FURNISH AND INSTALL 3/8" MINIMUM THICKNESS POOL PLASTER FINISH PER MFC AND NATIONAL POOL CODES/INSTALLATION PRACTICES.
C	---	NO DIVING SYMBOL	---	POOL CONTRACTOR TO FURNISH AND INSTALL COPING PIECE WITH NO DIVING SYMBOL. FINISH SHALL BE SLIP RESISTANT. REFER TO DETAIL 3 SPS.1
D	---	NO DIVING SYMBOL	---	POOL CONTRACTOR TO FURNISH AND INSTALL COPING PIECE WITH NO DIVING SYMBOL. TEXT ENGRAVED INTO THE SURFACE. FINISH SHALL BE SLIP RESISTANT. REFER TO DETAIL 3 SPS.1
E	---	DEPTH MARKER	---	POOL CONTRACTOR SHALL FURNISH AND INSTALL COPING PIECE WITH DEPTH MARKERS ENGRAVED INTO THE SURFACE. FINISH SHALL BE SLIP RESISTANT. INSTALL FLUSH WITH DECK. REFER TO DETAIL 3 SPS.1
F	NOBLE TILE	WATER LINE TILE SUPPLY	---	FURNISH AND INSTALL FROST PROOF DEPTH MARKER TILE FLUSH WITH WATER LINE. COLOR TO BE DETERMINED BY LANDSCAPE ARCHITECT. REFER TO DETAIL 3 SPS.1
G	REINFORCING	SKIMMER	1/3 SKIMMER	CONTRACTOR TO FURNISH AND INSTALL SKIMMER WITH LID AND FRAME. 2" MPF WITH 1-1/2" MPF REINFORCING WITH BASKET. REFER TO DETAIL 3 SPS.2
H	AQUATEX	MAN DRAIN	32C2P 151 WHITE	CONTRACTOR TO FURNISH AND INSTALL WHITE 32" CHANNEL DRAIN FLAT GRATE ANTI-ENTRAPMENT Suction Outlet Cover and PVC 3 PORT MANUFACTURED SLUMP YUGA RATED FOR 150 GPM FLOOR CAPACITY. REFER TO DETAIL 1 SPS.5
I	WATERWAY PLASTICS	WALL RETURN	2104B61400 14102	POOL CONTRACTOR TO FURNISH AND INSTALL 1 1/2" DIAMETER ADJUSTABLE SVEBALL FITTING IN LEFT/RIGHT 2" INCHER WALL RETURN. REFER TO DETAIL 3 SPS.5
J	PROFORME	FLOOR INLET	0941Y-400	POOL CONTRACTOR TO FURNISH AND INSTALL FLOOR INLET FITTING WITH 2" SLIP. 1-1/2" SLIP BUSHING COLOR TO BE DETERMINED BY LANDSCAPE ARCHITECT. REFER TO DETAIL 3 SPS.5
K	PENTAIR	FLUAT AC'LATED AUTO-FILL	749FR	POOL CONTRACTOR TO FURNISH AND INSTALL FLUIDMASTER AUTO FILL WITH 3/4" WATER SUPPLY AND 1/2" STATIC WATER LEVEL SENSING LINE. 3/4" OVERFLOW LINE TO BE PLUMBED TO STORM COLLECTION SYSTEM. REFER TO DETAIL 1 SPS.4
L	PENTAIR	OVERFLOW FITTING	5403P	POOL CONTRACTOR TO FURNISH AND INSTALL 4" X 2" SLITTER DRAIN AND GRATE COVER FOR 2" OVERFLOW LINE. REFER TO DETAIL 5 SPS.3
M	PENTAIR	UNDERWATER LIGHT	MICROBRITE WHITE	POOL CONTRACTOR TO FURNISH AND INSTALL UNDERWATER LIGHT (24VAC, 60 HZ, 120W). INSTALL WITH A MINIMUM OF 4" OF WATER COVER IN WALL. POOL CONTRACTOR TO FURNISH AND INSTALL INTERMATIC 100W OR 200W (24VAC) TRANSFORMER WITH LIGHT SYSTEM FITTING WITH 1/2" HOLES. CONDUIT MAY BE DOWN SIZED TO 1/2" FOR RUN TO TRANSFORMER. REFER TO DETAIL 2 SPS.4
N	AQUA CREEK	AQUA LEFT CHAIR	REVOLUTION XL	POOL CONTRACTOR TO FURNISH AND INSTALL AQUA LEFT CHAIR WITH 500 LBS WEIGHT CAPACITY. STAINLESS STEEL CONSTRUCTION WITH ANCHOR. POWDER COAT FINISH. BATTERY POWERED OPERATION. COLOR TO BE DETERMINED BY LANDSCAPE ARCHITECT. REFER TO DETAIL 3 SPS.3
O	SR SMITH	POOL LADDER	---	POOL CONTRACTOR TO FURNISH AND INSTALL 1.50" OD X 6.145" WALL THICKNESS (316L) S.S. 3 STEP LADDER. FURNISH AND INSTALL WITH BRONZE WEDGE AND S.S. ESCUTCHEON COVERS. REFER TO DETAIL 2 SPS.3
P	AQUATEX	WATER SHOWER	CLASSIC WATER SHOWER & AQUAVATOR	POOL CONTRACTOR TO FURNISH AND INSTALL WATER SHOWER FEATURE WITH AQUAVATOR SENSOR. 15 FOOT DIAMETER SPRAY AREA. REFER TO DETAIL 3 SPS.1
Q	NOBLE TILE	DELIMITATION TILE BAND	---	POOL CONTRACTOR TO FURNISH AND INSTALL 2" WIDE TILE DELIMITATION BAND WITH SLIP RESISTANT SURFACE. INSTALL AT VERTICAL AND HORIZONTAL NOSE OF STEPS AND BENCH/LEDGES. COLOR TO BE SELECTED BY LANDSCAPE ARCHITECT AND CONTRACT WITH POOL FLOOR.

© COPYRIGHT 2023 THE MFC CORPORATION. ALL RIGHTS RESERVED. REPRODUCTION OR DISTRIBUTION IS PROHIBITED.



© COPYRIGHT 2020 THE C.T. BRANNON CORPORATION. ALL RIGHTS RESERVED. NO REPRODUCTION OR REDISTRIBUTION IS PERMITTED.

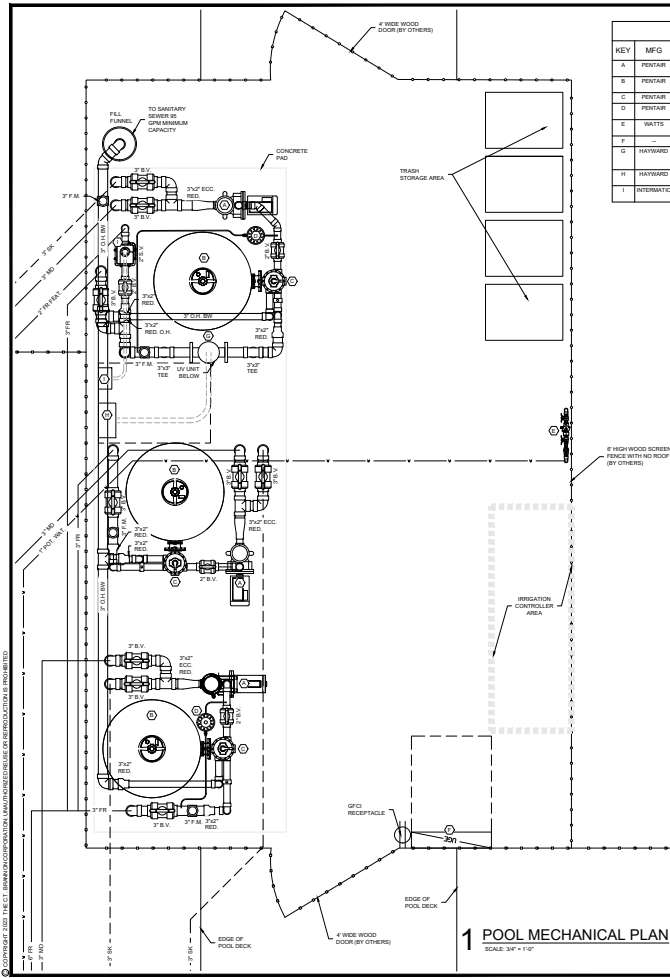


MILLS DEVELOPMENT & CONSTRUCTION
TRAILS OF LAVON
731 RIVER LANE
LAVON, TEXAS
POOL PLUMBING PLAN

NO.	DATE	REVISION

DESIGNED FOR PERMIT REVIEW AND CONSTRUCTION

PROJECT NO. 23120
SP2.0



KEY	MFG	DEVICE	MODEL NUMBER	DESCRIPTION
A	PENTAIR	POOL CIRCULATION PUMP OUTDOOR POOL	INTELLIFLO 2	POOL CONTRACTOR TO FURNISH AND INSTALL VARIABLE SPEED PUMP RATED FOR 95 GPM AT 50' GPM, 3.173 RPM, 3.95 TYP. 1 PHASE, 230V, 65 Hz, 2 1/2" IN CONNECTORS REQUIRED. 3 REQUIRED.
B	PENTAIR	SAND FILTER	TR 140	POOL CONTRACTOR TO FURNISH AND INSTALL TRITON II SIDE MOUNT SAND FILTER 7.06 S.F. FILTRATION AREA, NSF RATED FOR 100 GPM. 3 REQUIRED.
C	PENTAIR	MULTI-PORT VALVE	261055	POOL CONTRACTOR TO FURNISH AND INSTALL BACKWASH VALVE FOR FILTER. 3 REQUIRED.
D	PENTAIR	CHLORINATOR	RT1215	POOL CONTRACTOR TO FURNISH AND INSTALL DRYLINE TRICHLOR SPOOL FEEDER. TREATS 11,900 GALLONS TO 41,600 GALLONS IN BOTTOM FEED CONFIGURATION WITH SEE THROUGH AMBER BODY. HOLDS 11 LARGE OR 96 SMALL TABLETS. FURNISH AND INSTALL FLOW INDICATING DEVICE AND CORROSION RESISTANT CHECK VALVE FOR 1 1/2" TUBE. 2 REQUIRED.
E	BAUTTS	100% BACKFLOW PREVENTION DEVICE	100B102	MEP CONTRACTOR TO FURNISH AND INSTALL BACKFLOW PREVENTION DEVICE. POOL CONTRACTOR TO EXTEND 1" WATER SERVICE LINES TO POOL. WIGG-FLOAT ACTUATED AUTO FILL DEVICES. INSTALL BALL VALVE ON EACH SUPPLY LINE. 1 REQUIRED.
F	—	ELECTRICAL PANEL	—	INSTALL 60 AMP 125 VOLT 1 PHASE. 1 REQUIRED.
G	HAYWARD	POOL FEATURE UV UNIT	HY19150	POOL CONTRACTOR SHALL FURNISH AND INSTALL HAYWARD HY19150, 103 GPM MAXIMUM FLOW RATE (25 MCMGD), 2 LAMPS, 24 AMP DRAW, 125 V, 1 PHASE, 60 HZ, 3" INLET/OUTLET UNIONS, 50 PSI MAXIMUM OPERATING PRESSURE, 10 AMP BREAKERS REQUIRED. NIP 30, PRESSURE AND FLOW SAFETY SHUTOFF, THERMAL LIMIT SHUTOFF, SAFETY COVER REMOVAL SENSOR, ALARMS AND/OR LED SENSOR INDICATOR. 1 REQUIRED.
H	HAYWARD	UV CABINET	HY1103 UV CABINET	POOL CONTRACTOR SHALL FURNISH AND INSTALL HAYWARD HY1103 UV CABINET. RETAIL CABINET WITHIN 1 FEET OF UV UNIT. 1 REQUIRED.
I	HYDRATEC	SOLENOID VALVE & CONTROL BOX	—	CONTRACTOR TO FURNISH AND INSTALL 1" ACTUATED BALL VALVE FOR WATER SHOWER FEATURE SUPPLY WITH VALVE ACTUATOR IN MECHANICAL ROOM. CONTROLLER SHALL ACTIVATE 2" SOLENOID VALVE ON FEATURE SUPPLY LINE. TIMER CONTROL WITH ON/OFF SCHEDULING WITH MANUAL OVERRIDE. 1 REQUIRED.

OPERATION NOTES:
 1" CONTROL TO BE ACCOMPLISHED MANUALLY VIA HAND FEEDING.

FOR CLARITY, NOT ALL VALVES AND FITTINGS ARE SHOWN AND/OR CALLED OUT IN PLAN VIEW. REFER TO MECHANICAL SCHEMATIC FOR COMPLETE PIPING SYSTEM. REFER TO MEP FOR UTILITY CONNECTIONS, ELECTRICAL PANEL, AND MOTOR STARTER/CONNECTS (NOT SHOWN).

UTILITY REQUIREMENTS

PLUMBING:
 WATER SUPPLY: 1" POTABLE WATER SUPPLY PROTECTED BY RIFZ

ELECTRICAL:
 ELECTRICAL SUBPANEL, INTERLOCKS, GFCI CONVENIENCE RECEPTACLES AND LIGHTING BY MEP CONTRACTOR.

1 POOL MECHANICAL PLAN
 SCALE: 3/4" = 1'-0"

DESIGNED BY: DMF TAB
 ISSUE DATE: OCT 15, 2023

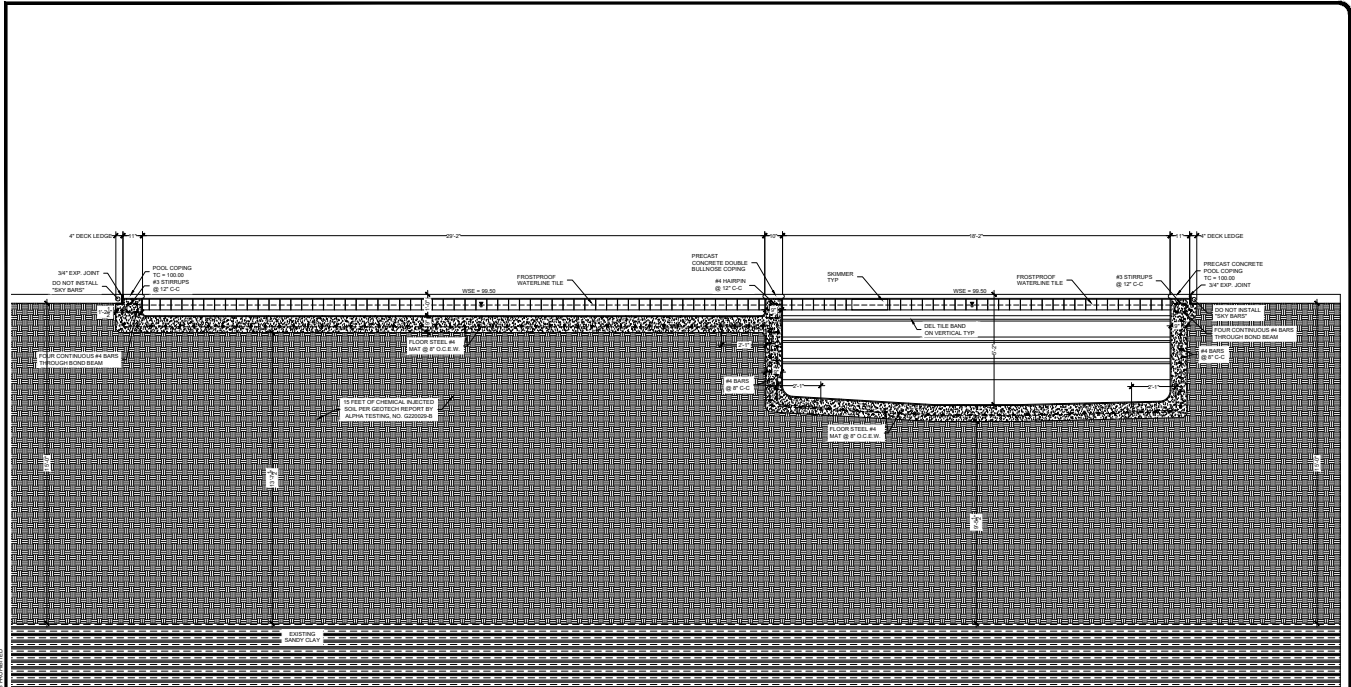
BRANNON CORP
 AQUATIC CONSULTANTS

MILLIS DEVELOPMENT & CONSTRUCTION
 TRAILS OF LAVON
 731 RIVER LANE
 LAVON, OHIO 44130
 POOL MECHANICAL PLAN

DATE	REVISION

APPROVED FOR PERMIT REVIEW AND CONSTRUCTION

PROJECT NO: 23120
 SHEET NO: SP3.0



1 POOL SECTIONS
SCALE 1/2" = 1'-0"

© COPYRIGHT 2009 THE C.T. BRANNON CORPORATION. ALL RIGHTS RESERVED. NO REPRODUCTION IS PERMITTED.

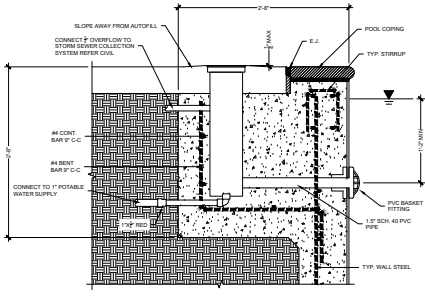


MILLIS DEVELOPMENT & CONSTRUCTION
TRAILS OF LAVON
731 RIVER LANE
LAVON, TEXAS
POOL SECTIONS

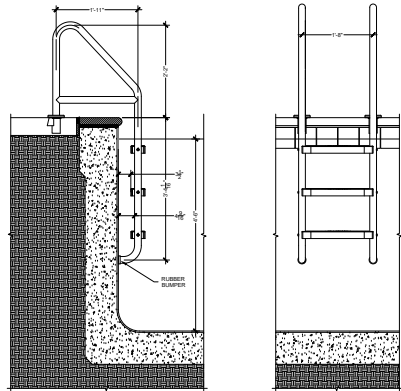
NO.	DATE	REVISION

DESIGNED FOR PERMIT REVIEW AND CONSTRUCTION

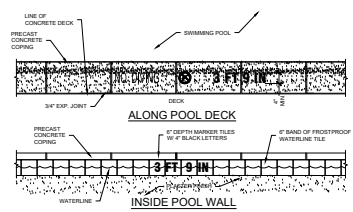
SHEET NO. 23120
SP4.1



1 FLOAT ACTUATED AUTOFILL DETAIL
SCALE: 1/2" = 1'-0"



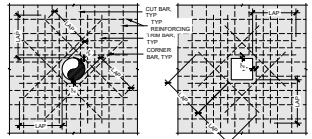
2 POOL LADDER DETAIL
SCALE: 3/4" = 1'-0"



GENERAL NOTES - TILE MARKINGS:

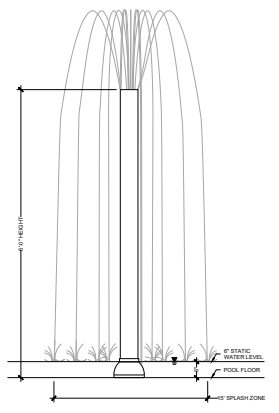
- REFER PLAN SHEET FOR DEPTH.
- EACH DEPTH MARKER SHALL SHOW FEET AND INCHES. (EXCEPTION: TILE MARKINGS AT EVEN FOOT INCREMENTS, SUCH AS 2'-0", ARE REQUIRED TO SHOW FEET OF DEPTH ONLY.)
- ALL DECK MARKINGS ON SWIMMING SURFACE SHALL HAVE A SLIP RESISTANT FINISH.
- MARKING SPACING BETWEEN DEPTH MARKERS SHALL NOT EXCEED 30'-0".
- WHERE POOL FLOOR TRANSITIONS FROM SHALLOW END TO DEEP END, MARK THE DEPTH AT THE SHALLOW AND DEEP SIDES OF THE SLICE AS WELL AS EVERY TWO FOOT INCREMENT IN BETWEEN.
- NO DIVING AND DEPTH MARKER LETTERS AND NUMERALS TO BE AREA FONT, 4" TALL, SANDBLASTED WATERCUT OR ENGRAVED INTO COPING AND PAINTED WITH BLACK EPOXY RESIN PAINT. 3/16" MINIMUM DEPTH CENTER OF LETTERS AND NUMERALS TO BE AT CENTERLINE OF COPING STONES.

3 DEPTH MARKER DETAIL
SCALE: 3/4" = 1'-0"

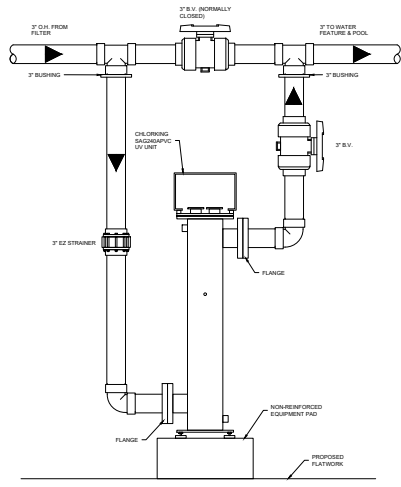


4 OPENING/PENETRATION/EMBED DETAIL
SCALE: 1/2" = 1'-0"

- INTERRUPT REINFORCING 2" CLEAR FROM OPENINGS / PENETRATIONS / EMBEDS.
- FOR EACH WALL AND TRIM BAR FOR EACH CUT BAR MATCH FLOOR / WALL REINFORCEMENT SCHEDULE. SPACE HALF OF THE TOTAL NUMBER OF TRIM BARS ON EACH SIDE OF OPENING, ALTERNATE WITH TYP. FLOOR / WALL BAR SPECIFIC TO THE NUMBER OF TRIM BARS FOR EACH NUMBER OF CUT BARS.
- FOR EMBEDS (GRILING, LIGHT NICHES, ETC.) THAT CUT BARS IN ONLY ONE MAT, TRIM AND CORNER BARS ARE ONLY REQUIRED FOR THAT MAT.
- IF A MINIMUM 1" METALL CORNER BARS AND ONE TRIM BAR ON EACH SIDE OF OPENINGS / PENETRATIONS / EMBEDS WITH MAXIMUM DIMENSION GREATER THAN 4". INSTALL CORNER / TRIM BARS WITH MINIMUM CLEAR COVER TO INTERIOR FACE OF FLOOR / WALL.
- TRIM BARS AND CORNER BARS ARE NOT REQUIRED FOR OPENINGS / PENETRATIONS / EMBEDS WITH MAXIMUM DIMENSION 4" OR LESS.



5 AQUATIX WATER SHOWER DETAIL
SCALE: N.T.S.



6 UV UNIT DETAIL
SCALE: 1/2" = 1'-0"

© COPYRIGHT 2020 THE C.T. BRANNON CORPORATION. UNAUTHORIZED REUSE OR REPRODUCTION IS PROHIBITED.

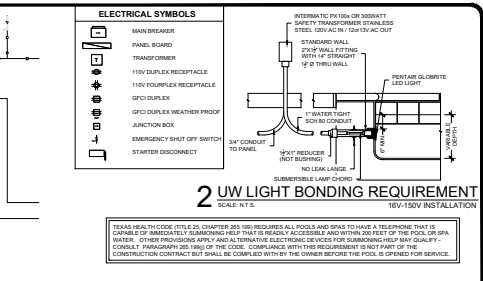
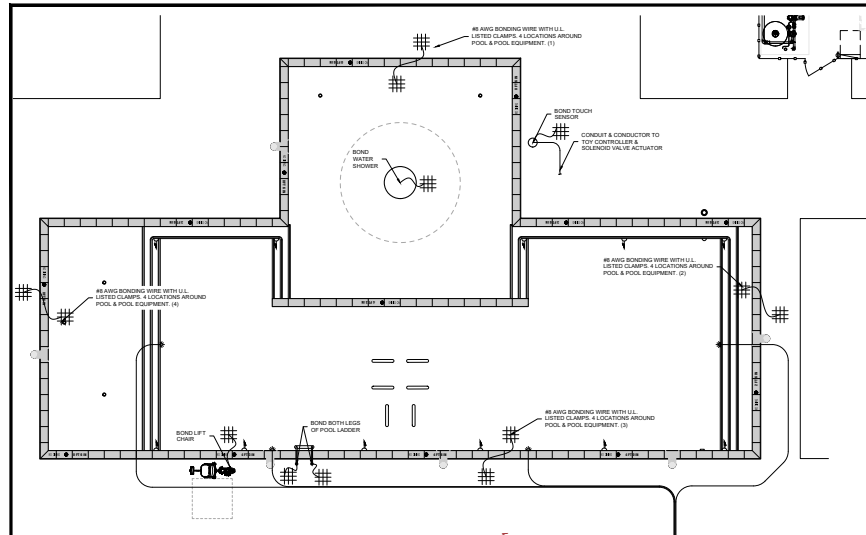


MILLS DEVELOPMENT & CONSTRUCTION
TRAILS OF LAVON
731 RIVER LANE
LAVON, TEXAS
POOL DETAILS

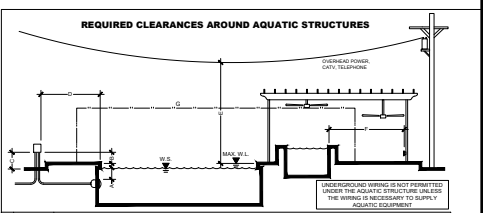
NO.	DATE	REVISION

DESIGNED FOR PERMIT REVIEW AND CONSTRUCTION

PROJECT NO: 23120
SP5.1

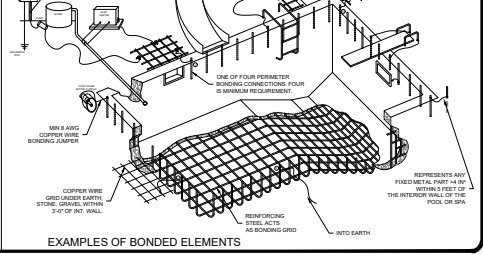
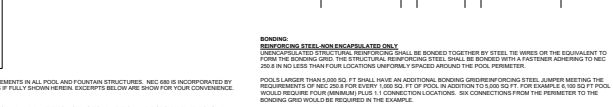


EMERGENCY ILLUMINATION - OVERHEAD LIGHTING REQUIREMENTS BY CODES
 POOLS AND POOL AREAS THAT OPERATE DURING PERIODS OF LOW ILLUMINATION SHALL BE PROVIDED WITH EMERGENCY LIGHTING THAT WILL AUTOMATICALLY TURN ON TO PERMIT EVACUATION OF THE POOL AND SECURING OF THE AREA IN THE EVENT OF POWER FAILURE.
 EMERGENCY LIGHTING FACILITIES SHALL BE ARRANGED TO PROVIDE INITIAL ILLUMINATION THAT IS NOT LESS THAN 0.1 FOOT-CANDLE (0.1 LUMEN PER SQUARE FOOT) (L.F.) MEASURED AT ANY POINT ON THE WATER SURFACE AND AT ANY POINT ON THE FINISH SURFACE OF THE DECK. NOT LESS THAN AN AVERAGE OF 1 FOOT-CANDLE (1 LUMEN PER SQUARE FOOT) (L.F.) AT THE END OF THE EMERGENCY LIGHTING OVERHEAD. THE ILLUMINATION LEVEL SHALL BE NOT LESS THAN 0.05 FOOT-CANDLE (0.05 LUMEN PER SQUARE FOOT) MEASURED AT ANY POINT ON THE WATER SURFACE AT ANY POINT ON THE FINISH SURFACE OF THE DECK, AND NOT LESS THAN AN AVERAGE OF 0.05 FOOT-CANDLE (0.05 LUMEN PER SQUARE FOOT) (L.F.) MEASURED AT ANY POINT ON THE WATER SURFACE AT ANY POINT ON THE FINISH SURFACE OF THE DECK. ILLUMINATION SHALL BE PROVIDED TO PERMIT EVACUATION OF THE POOL AND SECURING OF THE AREA IN THE EVENT OF POWER FAILURE.



CLEARANCE	CLEARANCE PARAMETER
A 18 FEET	MIN. SUBMERSION BELOW NORMAL W.L. FOR U.V. LIGHTS UNLESS THE LIGHT IS LISTED AND IDENTIFIED FOR USE AT LESSED DEPTH. NO U.V. LIGHT SHALL BE INSTALLED LESS THAN 4\"/>
B 8 INCHES	CLR. DISTANCE FROM MAIN W.L. TO BOTTOM OF U.V. LIGHT JUNCTION BOX OR LOW VOLTAGE TRANSFORMER
C 4 INCHES	CLR. DISTANCE FROM GROUND LEVEL TO BOTTOM OF U.V. LIGHT JUNCTION BOX OR LOW VOLTAGE TRANSFORMER
D 5 FEET	HORIZ. CLR. DISTANCE BETWEEN EDGE OF W.S. AND ANCHOR BOX OR LOW VOLTAGE TRANSFORMER
E 27 FEET	CLR. DISTANCE IN ANY DIRECTION FROM CH. CONDUCTORS TO WATER W.L. EDGE OF P.V.E. BASE OF FINISH PLATFORM OR PERMANENTLY ANCHORED RAFT. ENVELOPE EXTENDS HORIZ. FROM THE EDGE OF THE W.S. TO THE OUTER EDGE OF STRUCTURES LISTED ABOVE, BUT NOT LESS THAN 15 FEET
F 18 FEET	CLR. DISTANCE IN ANY DIRECTION FROM CH. CONDUCTORS TO OBSERVATION STATION, TOWER, OR DRIVING PLATFORM ENVELOPE EXTENDING HORIZ. FROM THE EDGE OF THE W.S. TO THE OUTER EDGE OF STRUCTURES LISTED ABOVE, BUT NOT LESS THAN 15 FEET
G 6 FEET	CLR. DISTANCE BETWEEN EDGE OF W.S. AND RECEPTACLES
H 5 FEET	HORIZ. CLR. DISTANCE BETWEEN OTHER OUTLETS AND EDGE OF W.S.
I 10 FEET	CLR. DISTANCE BETWEEN OTHER OUTLETS (PANELS, COMMUNICATIONS, ETC.) AND EDGE OF W.S.
J 12 FEET	CLR. DISTANCE BETWEEN MAX. W.L. AND CH. LIGHTS, LIGHTING OUTLETS, AND CEILING SUSPENDED PANEL ENVELOPE EXTENDING HORIZ. 5 FEET FROM THE EDGE OF W.S.

GENERAL POOL ELECTRICAL REQUIREMENTS
 NATIONAL ELECTRICAL CODE SECTION 680 (NEC 680) GOVERNS ELECTRICAL REQUIREMENTS IN ALL POOL AND FOUNTAIN STRUCTURES. NEC 680 IS INCORPORATED BY REFERENCE HEREIN IN ITS ENTIRETY AND SHALL BE IN FULL FORCE AND EFFECT AS IF FULLY SHOWN HEREIN. EXCEPTS BELOW ARE SHOWN FOR YOUR CONVENIENCE.
GROUNDING
 ELECTRICAL EQUIPMENT SHALL BE GROUNDED ACCORDANCE WITH NEC 250 PARTS V, VI, AND VII. THE FOLLOWING EQUIPMENT SHALL BE GROUNDED: THROUGH-WALL LIGHTING FIXTURES WITH TAGS EXTENDING GREATER THAN 6 FEET OF THE FINISH FLOOR INTERIOR WALL; JUNCTION BOXES, ELECTRICAL EQUIPMENT THAT REGULATES THE WATER, TRANSFORMER AND POWER SUPPLY ENCLOSURES, GFCI UNITS, PANELBOARDS THAT SERVE THE ELECTRICAL EQUIPMENT THAT OPERATES THE WATER FILLED SKIN.
 UNDERGROUND WIRING MUST BE INSTALLED IN SCHEDULE 80 PVC RIGID CONDUIT. DIRECT BURIED CABLE IS NOT ALLOWED. ALUMINUM CONDUIT IS NOT PERMITTED FOR THIS POOL WIRING INSTALLATION.
 RECEPTACLES 15 OR 20 AMP 120V WITHIN 20 FEET OF THE INTERIOR WALL OF THE POOL OR SPA MUST HAVE GFCI PROTECTION. NO RECEPTACLES ARE ALLOWED WITHIN 12\"/>



NON-REVERSING STARTER/DISCONNECT SCHEDULE
 STARTER/DISCONNECT SWITCHES REQUIRED FOR PUMP MOTORS IN EXCESS OF 20 HP OR 300V (LOADING). REFER TO NEC 430.10 FOR DISCONNECT REQUIREMENTS FOR MOTOR AND PUMP MOTORS AND MOTORS LESS THAN 20 HP AND 300V.
 METAL PANELS THAT ARE REQUIRED FOR PANELS AND ALL STARTER/DISCONNECT UNITS. MOTORS INSTALLED FOR SWIMMING POOLS 10 1/2 TO 2 1/2 HP SHALL HAVE A COMBINATION MOTOR STARTER/DISCONNECT WITH FUSED SHORT CIRCUIT PROTECTION MANUFACTURED BY GENERAL ELECTRIC OR SQUARE D. MOTORS INSTALLED FOR SWIMMING POOLS WITH LOADS GREATER THAN 2 1/2 HP REQUIRE INSTALLATION OF A REDUCED VOLTAGE STARTER MANUFACTURED BY GENERAL ELECTRIC OR SQUARE D. CONTRACTOR TO CONFIGURE REDUCED VOLTAGE STARTER TO "SOFT START" (0.5 SEC.) AND "SOFT STOP" (20 SEC.) INSTALL STARTER/DISCONNECT WITHIN GIRT OF MOTOR AND PROVIDE LOCK OUT MECHANISM TO DISALLOW START DURING MAINTENANCE.

BONDING
 REINFORCING STEEL NON-ENCAPSULATED JOINT
 REINFORCING STEEL JOINTS SHALL BE BONDED TOGETHER BY STEEL WIRE NETS OR THE EQUIVALENT TO FORM THE BONDING GRID. THE STRUCTURAL REINFORCING STEEL SHALL BE BONDED WITH A FASTENER ADHERING TO NEC 250.18 IN NO LESS THAN FOUR LOCATIONS (APPROXIMATELY SPACED) AROUND THE POOL PERIMETER.
 POOLS LARGER THAN 3,000 SQ. FT. SHALL HAVE AN ADDITIONAL BONDING REINFORCING STEEL JUMPER MEETING THE REQUIREMENT OF NEC 250.18 FOR EVERY 1,000 SQ. FT. OF POOL. IN ADDITION TO 3,000 SQ. FT. FOR EXAMPLES: 4,000 SQ. FT. POOL WOULD REQUIRE FOUR JUMPERS PLUS 1 CONNECTION LOCATIONS. SEE CONNECTION FROM THE PERIMETER TO THE BONDING GRID POOLS ARE REQUIRED IN THE EXAMPLE.
 THE FOLLOWING EQUIPMENT IF SHOWN MUST BE CONNECTED TO THE BONDING GRID PER NEC 250.8.
METAL COMPONENTS
 ALL METAL PARTS OF THE POOL STRUCTURE OR EMBEDDED THEREIN AND HAVING AN EXPOSED SURFACE AREA GREATER THAN FOUR SQUARE INCHES SHALL BE BONDED.
UNDERWATER LIGHTING
 POLYESTER FIBER OPTIC LIGHTING BRACKETS OF NON-CORROSIVE MATERIALS SHALL BE BONDED PER NEC 680 FOR LOW VOLTAGE EXCEPTIONS.
METAL PARTS
 ALL METAL PARTS ATTACHED TO OR MOUNTED TO THE POOL STRUCTURE SHALL BE BONDED.
ELECTRICAL EQUIPMENT
 ALL METAL PARTS OF ELECTRICAL EQUIPMENT ASSOCIATED WITH POOL WATER, FOR EXAMPLE POOL PUMPS WITH MOTORS AND POOL COVERS WITH MOTORS SHALL BE BONDED.
 POOL WATER HEATERS IN EXCESS OF 50 AMPERES REQUIRE BONDING. REFER TO POOL HEATER INSTALLATION SPECIFIC INSTRUCTIONS REGARDING PARTS OF THE POOL HEATER THAT REQUIRE BONDING.
FIXED METAL PARTS
 ALL METAL PARTS WITHIN 3 FEET OF THE INTERIOR WALL OF THE POOL OR SPA SHALL BE BONDED INCLUDING, BUT NOT LIMITED TO: METAL FINISHES, METAL TYPING, METAL AWNINGS, METAL FENCES, AND METAL DOOR AND WINDOW FRAMES. REFER TO NEC 680 FOR EXCEPTIONS.
NO METAL COMPONENTS IN POOL SHELL
 IF THERE ARE NO METAL COMPONENTS IN THE POOL SHELL OR MOUNTED TO THE POOL SHELL, AN INTENTIONAL BOND OF A MINIMUM 5 S. CONDUCTIVE SURFACE AREA OF A SQUARE INCHES MUST BE INSTALLED. THE BONDING PLATE MUST BE INSTALLED IN CONTACT WITH THE POOL WATER BY THE POOL CONTRACTOR IN A LOCATION AS DETERMINED BY THE SURFACE.
PERIMETER SURFACES
 BONDING GRID SHALL BE EXTENDED 3 FEET HORIZONTALLY BEYOND THE INTERIOR WALL OF THE POOL OR SPA INTO THE ADJACENT SURFACES. BONDING GRID SHALL BE INSTALLED IN ADJACENT DECK, GRAVEL, NOT REINFORCED DECK, BATH, LANDSCAPING, BUILDING OR OTHER STRUCTURES PER NEC 680 SURFACE DEFINITIONS.

DESIGNED BY: SP-E
 ISSUE DATE: OCT 10, 2020

DESIGNED BY: SP-E
 ISSUE DATE: OCT 10, 2020

DESIGNED BY: SP-E
 ISSUE DATE: OCT 10, 2020

DESIGNED BY: SP-E
 ISSUE DATE: OCT 10, 2020

BRANDON CORP.
 AQUATIC CONSULTANTS

MILLS DEVELOPMENT & CONSTRUCTION
 TRAILS OF LAVON
 731 RIVER LAKE
 POOL ELECTRICAL PLAN

DATE: 10/10/20
 SHEET NO: 23120
 PROJECT NO: SP-E