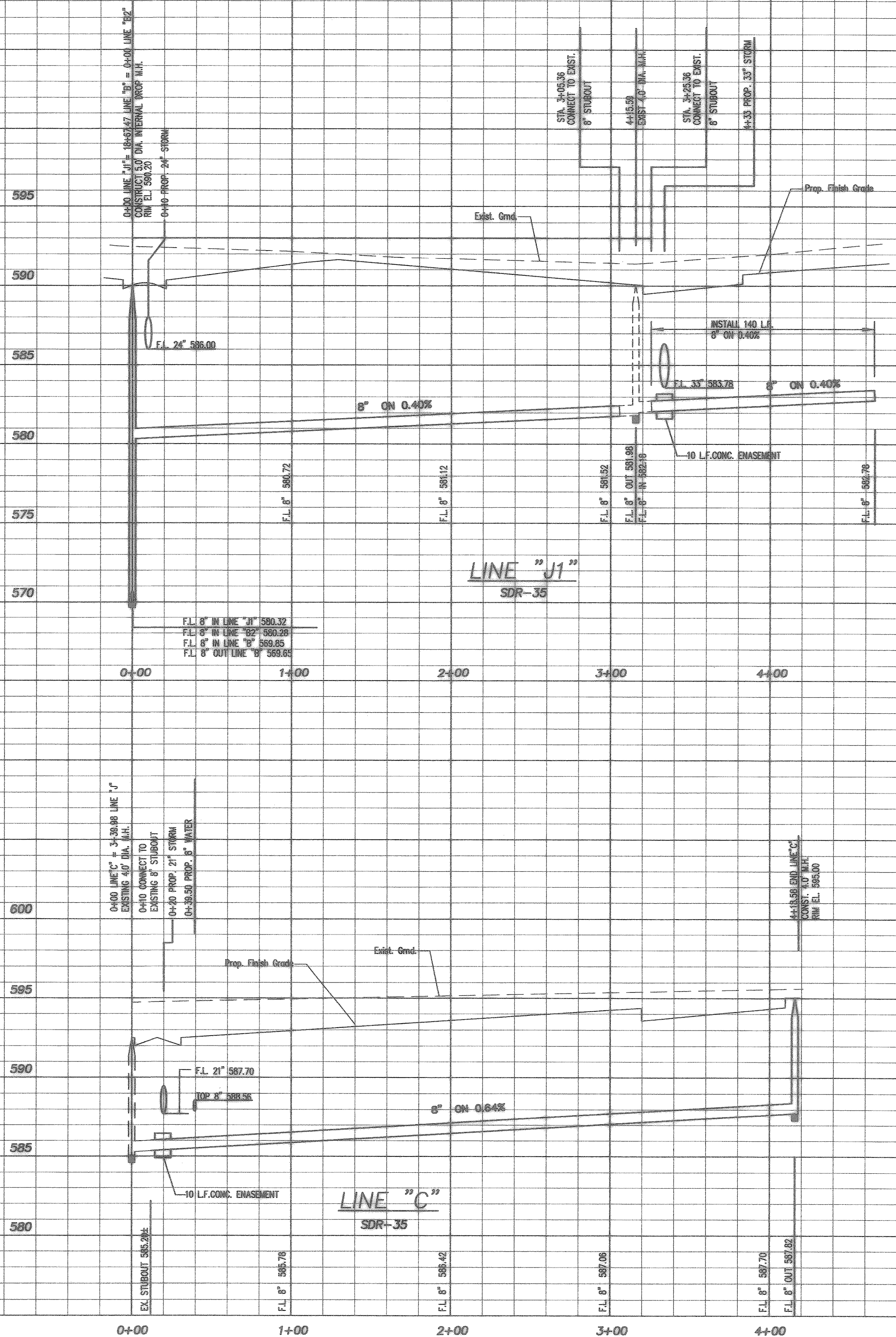
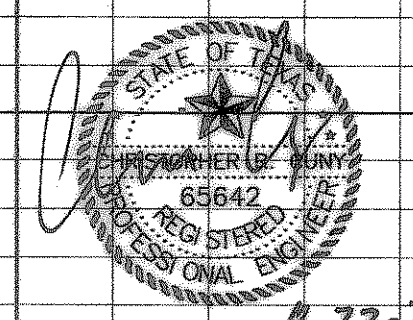


Z:\Projects\15-Residential\Fontanna\Record Drawings\Font-sand.dwg Wed Aug 22 10:50:25 2007



THE SEAL APPEARING ON THIS DOCUMENT WAS AUTHORIZED BY CHRISTOPHER R. CUNY, P.E. 65642



8-22-2007

**Construction Record Drawing**  
8-22-2007

**Sanitary Sewer Profiles - Lines "C" & "J1"**  
**Fontanna Ranch**  
 City of Rockwall, Rockwall County, Texas  
 Spring Haven Investments, Inc.  
 6750 Hillcrest Plaza Dr. • Suite 305 • Dallas, Texas 75030 • 972.386.3333

**F.C. CUNY CORPORATION**  
 #2 Horizon Court • Heath, Texas 75032 • 469-402-7700

Drawn By:	Checked By:	Date:	Scale:	Project No.:	Sheet No.:
MSC	DW	10/18/06	H: 1"=40' V: 1"=4'	05-013	42 of 45