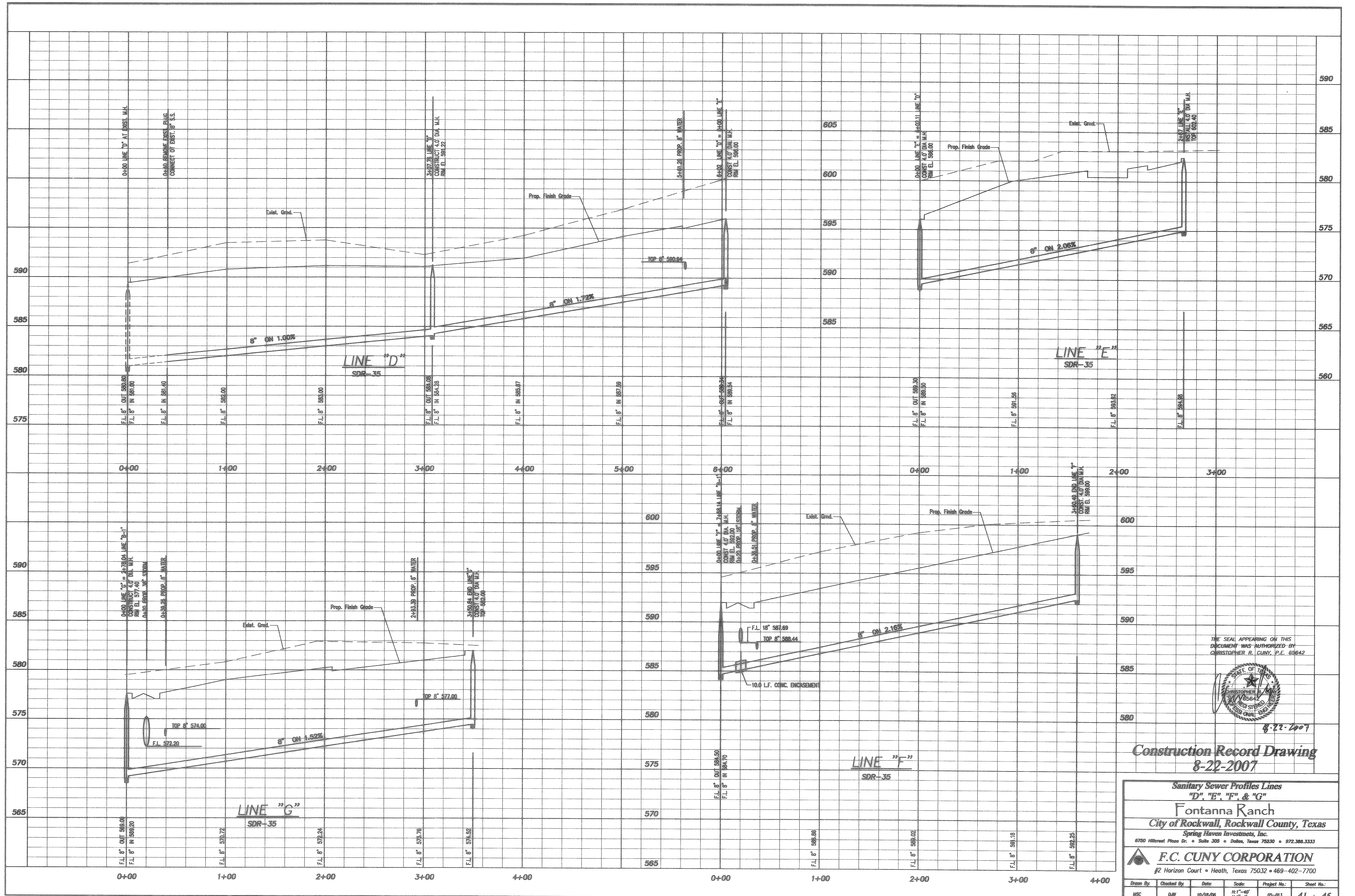
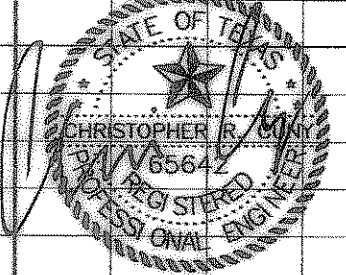


Z:\Projects\6-Residential\Fontanna Record Drawings\font-sanc.dwg Mod Aug 22 10:42:36 2007



THE SEAL APPEARING ON THIS DOCUMENT WAS AUTHORIZED BY CHRISTOPHER R. CUNY, P.E. 69642



### Construction Record Drawing 8-22-2007

Sanitary Sewer Profiles Lines  
"D", "E", "F", & "G"

Fontanna Ranch  
City of Rockwall, Rockwall County, Texas

Spring Haven Investments, Inc.  
6750 Hillcrest Plaza Dr. • Suite 305 • Dallas, Texas 75230 • 972.388.3333

**F.C. CUNY CORPORATION**  
#2 Horizon Court • Heath, Texas 75032 • 469-402-7700

Drawn By:	Checked By:	Date:	Scale:	Project No.:	Sheet No.:
MSC	DW	10/18/06	H:1"=40' V:1"=4'	05-013	41 of 45