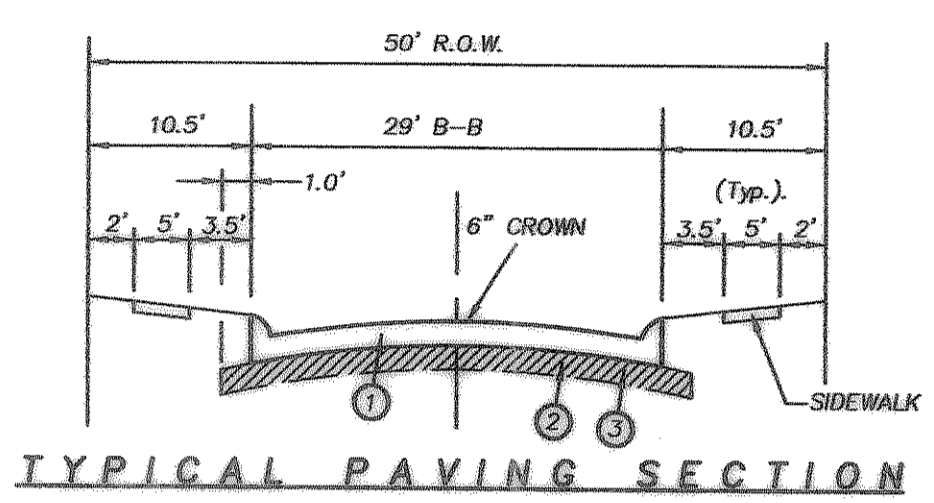


C.L. CURVE TABLE

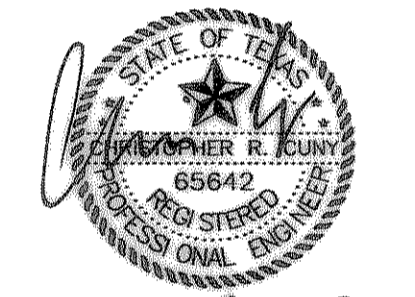
CURVE	RADIUS	DELTA	TANGENT	LENGTH	CHORD	BEARING
C-1	200.00'	40°41'37"	74.17'	142.04'	139.08'	S 69°56'27" W
C-2	200.00'	40°56'20"	74.72'	143.02'	139.99'	S 70°04'46" E
C-3	275.00'	29°04'25"	61.65'	120.34'	119.36'	S 76°53'49" E
C-4	275.00'	15°36'39"	37.69'	74.92'	74.69'	S 53°47'41" E
C-5	425.00'	08°42'42"	32.37'	64.61'	64.55'	N 53°55'22" W
C-6	391.77'	10°04'08"	34.51'	68.85'	68.76'	N 53°41'47" E
C-7	375.00'	10°37'43"	34.88'	69.56'	69.46'	S 52°57'51" E
C-8	375.00'	10°37'43"	34.88'	69.56'	69.46'	S 42°20'09" E
C-9	425.00'	14°31'03"	54.13'	107.66'	107.40'	N 44°16'46" W
C-10	450.00'	28°00'39"	112.24'	219.99'	217.81'	N 26°20'40" E
C-11	100.00'	78°28'49"	81.67'	136.97'	126.51'	N 81°35'25" E
C-12	200.00'	30°14'49"	54.05'	105.58'	104.35'	N 74°17'35" W
C-13	80.00'	80°00'00"	80.00'	126.66'	113.14'	S 44°25'00" E
C-14	655.00'	03°49'18"	21.85'	43.69'	43.69'	N 88°36'21" E
C-15	645.00'	11°28'28"	64.80'	129.17'	128.95'	N 87°34'04" E
C-16	800.00'	11°28'47"	80.41'	160.28'	160.02'	S 87°34'13" E
C-17	500.00'	13°50'17"	60.67'	120.76'	120.47'	N 87°25'12" E
C-18	600.00'	03°51'41"	20.23'	40.44'	40.43'	N 87°33'09" W
C-19	600.00'	07°38'34"	39.90'	79.69'	79.63'	S 89°25'36" E
C-20	600.00'	03°44'53"	19.83'	39.25'	39.24'	S 88°38'33" W
C-21	375.00'	12°53'02"	41.78'	83.33'	83.08'	N 53°07'29" W
C-22	425.00'	27°24'43"	103.65'	203.33'	201.40'	N 89°31'41" E
C-23	175.00'	14°41'41"	22.57'	44.88'	44.76'	S 83°10'09" W
C-24	200.00'	31°02'11"	55.53'	108.34'	107.02'	N 73°57'55" W
C-25	200.00'	30°31'35"	54.58'	106.56'	105.30'	S 70°42'37" E
C-26	200.00'	23°07'43"	40.11'	80.33'	79.78'	N 11°30'21" E
C-27	220.00'	40°08'20"	80.38'	154.12'	150.99'	S 22°34'44" E
C-28	200.00'	43°13'54"	79.25'	159.90'	147.35'	N 21°01'57" W
C-29	300.00'	40°58'22"	112.13'	214.82'	210.07'	S 19°54'41" E
C-30	175.00'	18°11'42"	28.02'	55.57'	55.34'	N 51°26'51" E
C-31	225.00'	18°11'42"	38.03'	71.45'	71.15'	S 51°26'51" E
C-32	180.00'	53°25'27"	58.48'	113.46'	110.44'	N 62°42'38" W
C-33	140.00'	90°00'00"	140.00'	219.91'	197.99'	S 44°29'00" E



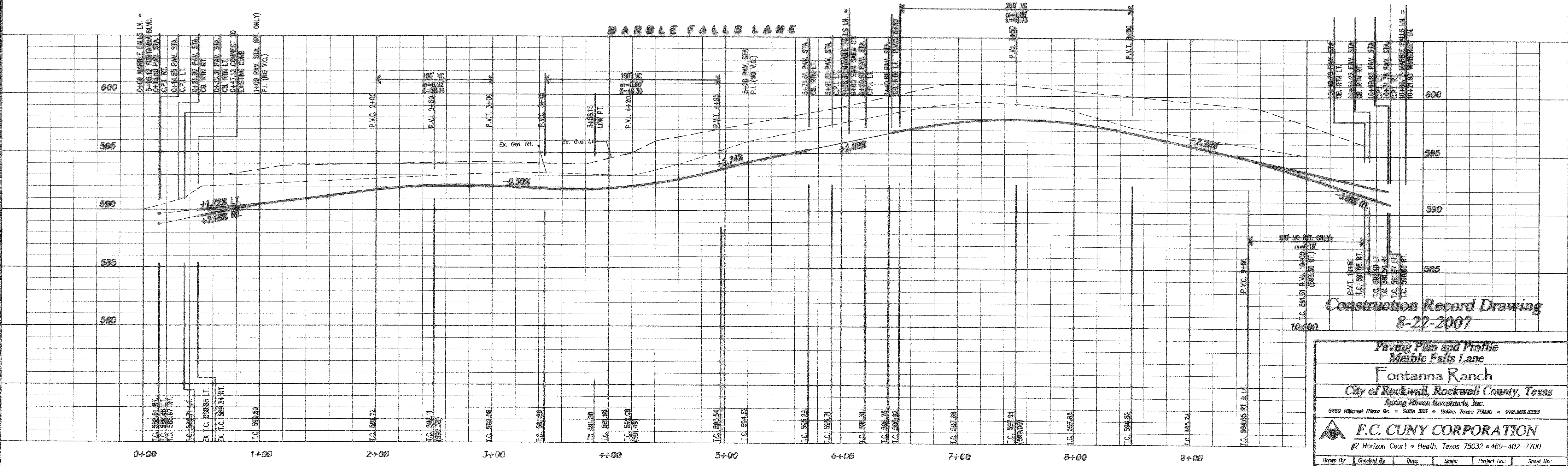
- 6"-3600 PSI Glass "C" concrete pavement with No. 3 bars 24" on centers both ways. Min. 6 Sack For Machine Placed. Min. 6 1/2 Sack For Hand Placed.
- Where the Plasticity index of the natural soil is equal to or exceeds 15, lime stabilization shall be required. A minimum of 5% by weight of lime to a depth of 6" shall be required.
- Subgrade shall be 6" thick and compacted to a density not less than 95% at 0% - 4% of optimum moisture content.

Notes:
 1. All construction joints & rebar to be in conformance with the City of Rockwall Specifications and Standards.
 Note: Construct Barrier Free Ramp (B.F.R.) per City of Rockwall Stds.

THE SEAL APPEARING ON THIS DOCUMENT WAS AUTHORIZED BY CHRISTOPHER R. CUNY, P.E. 65642



8-22-2007



Construction Record Drawing
8-22-2007

Paving Plan and Profile
Marble Falls Lane
Fontanna Ranch
City of Rockwall, Rockwall County, Texas
Spring Haven Investments, Inc.
8750 Hillcrest Plaza Dr. • Suite 305 • Dallas, Texas 75230 • 972.386.3333

F.C. CUNY CORPORATION
#2 Horizon Court • Heath, Texas 75032 • 469-402-7700

Drawn By:	Checked By:	Date:	Scale:	Project No.:	Sheet No.:
MSC	DJW	10/18/06	H:1"=40' V:1"=4'	05-013	12 of 45