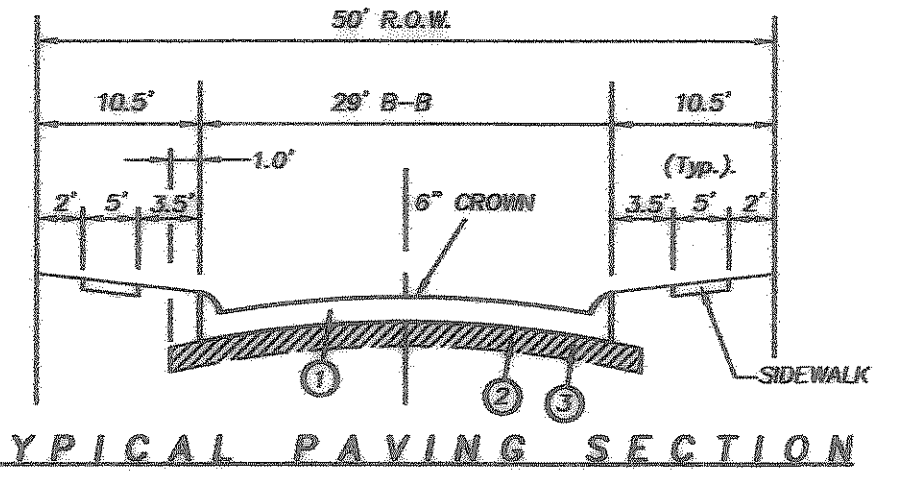


**LEGEND**

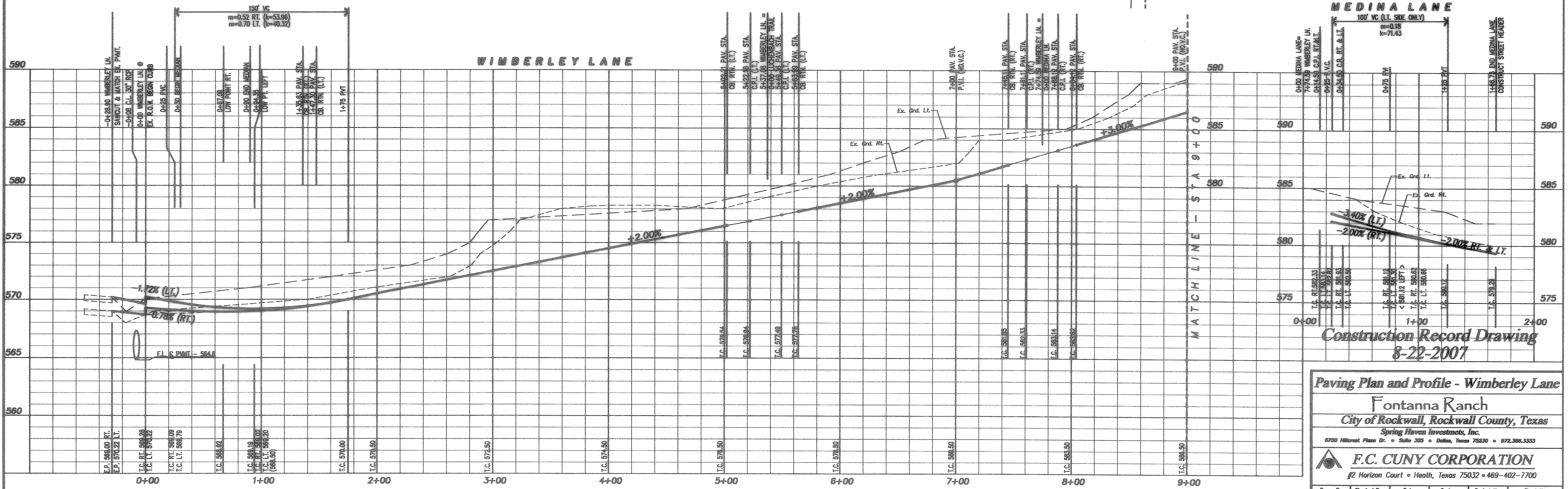
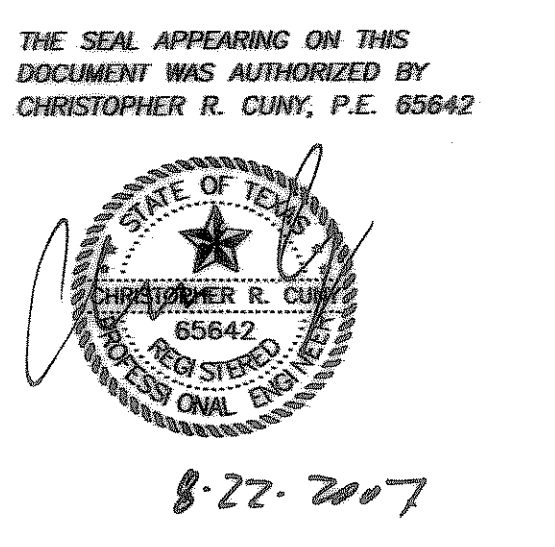
- PROP. PAVEMENT
- - - SETBACK (BLDG) LINE
- - - EXTERIOR BOUNDARY LINE
- - - LOT LINE
- - - RIGHT OF WAY
- DRAINAGE DIRECTION
- - - EASEMENT

**C.L. CURVE TABLE**

CURVE	RADIUS	DELTA	TANGENT	LENGTH	CHORD	BEARING
C-1	200.00'	40°13'37"	74.17	102.04'	138.06'	S 69°58'27" W
C-2	200.00'	40°58'20"	74.72	103.02'	139.99'	N 70°04'46" E
C-3	275.00'	25°04'25"	61.15	120.34'	119.39'	S 76°53'46" E
C-4	275.00'	15°38'39"	37.89	74.92'	74.89'	S 53°47'48" E
C-5	425.00'	09°42'42"	32.57	64.91'	64.55'	S 53°53'22" E
C-6	381.77'	10°04'06"	34.51'	68.85'	68.70'	N 53°41'47" E
C-7	375.00'	10°37'43"	34.88'	69.58'	68.46'	S 52°57'51" E
C-8	375.00'	10°37'43"	34.88'	69.58'	68.46'	S 42°20'08" E
C-9	425.00'	14°31'03"	54.13'	107.66'	107.40'	N 44°16'46" E
C-10	450.00'	28°00'39"	112.24'	219.89'	217.81'	N 28°20'40" E
C-11	100.00'	72°28'48"	81.67'	138.97'	128.91'	N 87°35'25" E
C-12	200.00'	30°14'46"	54.05'	105.58'	104.38'	N 74°17'35" E
C-13	80.00'	90°00'00"	80.00'	125.66'	113.14'	S 44°25'00" E
C-14	655.00'	03°49'16"	21.85'	43.69'	43.66'	N 88°38'21" E
C-15	645.00'	11°29'28"	64.80'	128.17'	128.96'	N 87°34'04" E
C-16	800.00'	11°28'47"	80.41'	160.26'	160.02'	N 87°34'13" E
C-17	500.00'	13°50'17"	80.67'	120.75'	120.47'	N 87°25'12" E
C-18	600.00'	03°51'41"	20.23'	40.44'	40.43'	N 87°33'16" E
C-19	600.00'	07°58'34"	38.90'	78.69'	78.83'	N 88°25'36" E
C-20	600.00'	03°44'53"	19.63'	38.25'	38.24'	S 88°38'33" W
C-21	375.00'	12°43'02"	41.79'	83.23'	83.06'	N 83°07'29" E
C-22	425.00'	27°24'43"	103.65'	203.33'	201.40'	N 89°31'41" E
C-23	175.00'	14°41'41"	22.57'	44.86'	44.76'	S 87°00'00" W
C-24	200.00'	31°02'11"	55.53'	108.34'	107.02'	N 73°57'25" E
C-25	200.00'	30°31'35"	54.58'	106.56'	106.50'	S 73°42'37" E
C-26	200.00'	23°00'43"	40.71'	80.33'	79.79'	N 11°30'21" E
C-27	220.00'	40°08'20"	80.39'	154.12'	150.99'	S 22°34'44" E
C-28	200.00'	43°13'54"	79.25'	150.90'	147.35'	N 21°01'57" E
C-29	300.00'	40°59'27"	112.13'	214.62'	210.07'	N 19°54'41" E
C-30	175.00'	18°11'42"	28.02'	55.57'	55.34'	N 51°29'51" E
C-31	225.00'	18°11'42"	36.03'	71.45'	71.15'	S 51°26'51" E
C-32	100.00'	53°32'57"	50.46'	93.46'	90.10'	N 62°42'32" E
C-33	140.00'	90°00'00"	140.00'	218.91'	197.99'	S 44°29'00" E



- 6"-3600 PSI Class "C" concrete pavement with No. 3 bars 24" on centers both ways. Min. 6 Stacks For Machine Placed Min. 6 1/2 Stacks For Hand Placed
  - Where the Plasticity Index of the natural soil is equal to or exceeds 15, lime stabilization shall be required. A minimum of 6% by weight of lime to a depth of 6" shall be required.
  - Subgrade shall be 6" thick and compacted to a density not less than 95% at 0.5-0.5 of optimum moisture content.
- Notes:  
1. All construction joints & rebar to be in conformance with the City of Rockwall Specifications and Standards.



Construction Record Drawing  
8-22-2007

**Paving Plan and Profile - Wimberley Lane**  
**Fontanna Ranch**  
 City of Rockwall, Rockwall County, Texas  
 Spring Haven Investments, Inc.  
 6750 Hillcrest Plaza Dr. • Suite 305 • Dallas, Texas 75230 • 972.396.3333  
**F.C. CUNY CORPORATION**  
 #2 Horizon Court • Heath, Texas 75032 • 469-402-7700

Drawn By:	Checked By:	Date:	Scale:	Project No.:	Sheet No.:
MSC	DJM	10/16/06	H:1"=40' V:1"=4'	05-013	6 of 45

Z:\Projects\A\5-Resident\11\Fontanna\Record Drawings\Font-pav1.dwg Non Sep 24 08:08:56 2007