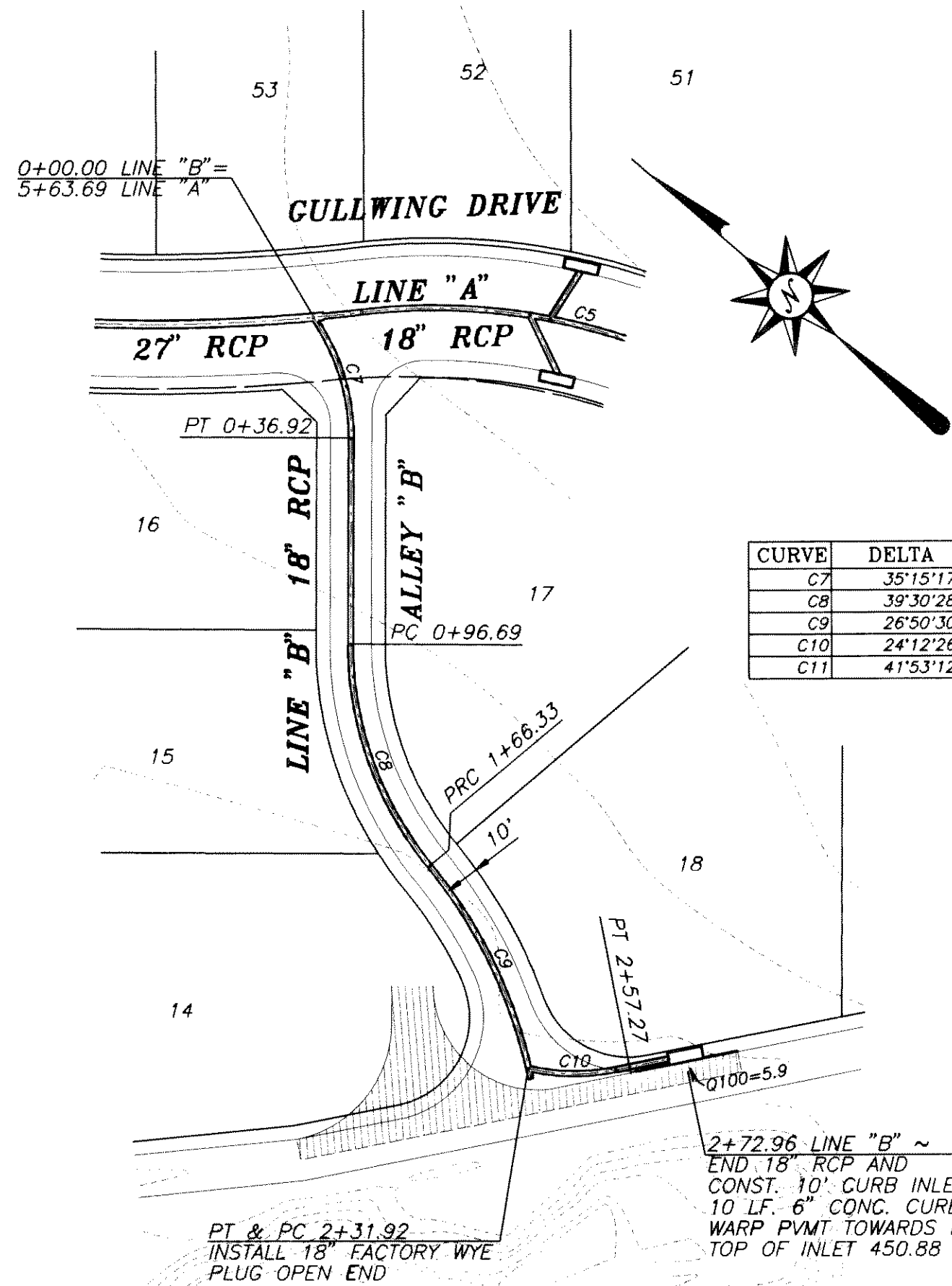


NORTH TEXAS MUNICIPAL WATER DISTRICT NOTES

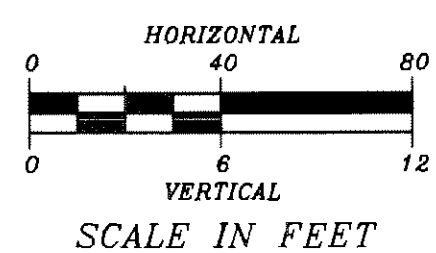
- A. THE NORTH TEXAS MUNICIPAL WATER DISTRICT (NTMWD) HAS A 14-INCH FORCE MAIN LOCATED ON THIS SITE.
- B. OPERATION OF HEAVY EARTHMOVING EQUIPMENT, COMPACTION EQUIPMENT, OR HEAVY CONSTRUCTION EQUIPMENT, SUCH AS CONCRETE TRUCKS, SHALL BE RESTRICTED TO SPECIFIC CROSSING POINTS ACROSS NTMWD EASEMENTS, AS APPROVED BY THE NTMWD. THE CROSSINGS SHALL BE DESIGNATED AND VERIFIED TO PROVIDE A MINIMUM OF 5 FEET COVER.
- C. TO ASSURE THAT THE EXISTING PIPELINES ARE NOT DAMAGED BY PLACING OF SIGNIFICANT LOADS OVER NTMWD PIPELINES, NO MATERIAL SHALL BE STOCKPILED ON A NTMWD EASEMENT WITHOUT AUTHORIZATION FROM THE NTMWD. IF THE CONTRACTOR DESIRES TO USE NTMWD'S EASEMENT FOR STOCKPILING OF MATERIALS, PLEASE CONTACT CHARLIE WITTE OF NTMWD AT (972) 442-5405 SO YOUR PLAN FOR THE USE OF NTMWD EASEMENT CAN BE REVIEWED.
- D. UNLESS OTHERWISE SHOWN OR REQUIRED, A MINIMUM OF ONE (1) FOOT CLEARANCE SHALL BE PROVIDED FOR ALL UTILITIES CROSSING NTMWD PIPELINES.
- E. THE CONTRACTOR SHALL CONTACT MR. JOE STANKIEWICZ, P.E., ENGINEERING OFFICER, AT (972) 442-5405 AT LEAST 48 HOURS PRIOR TO PERFORMING ANY WORK IN THE VICINITY OF THE NTMWD FACILITIES.

DRAINAGE DATA FULLY DEVELOPED CONDITIONS

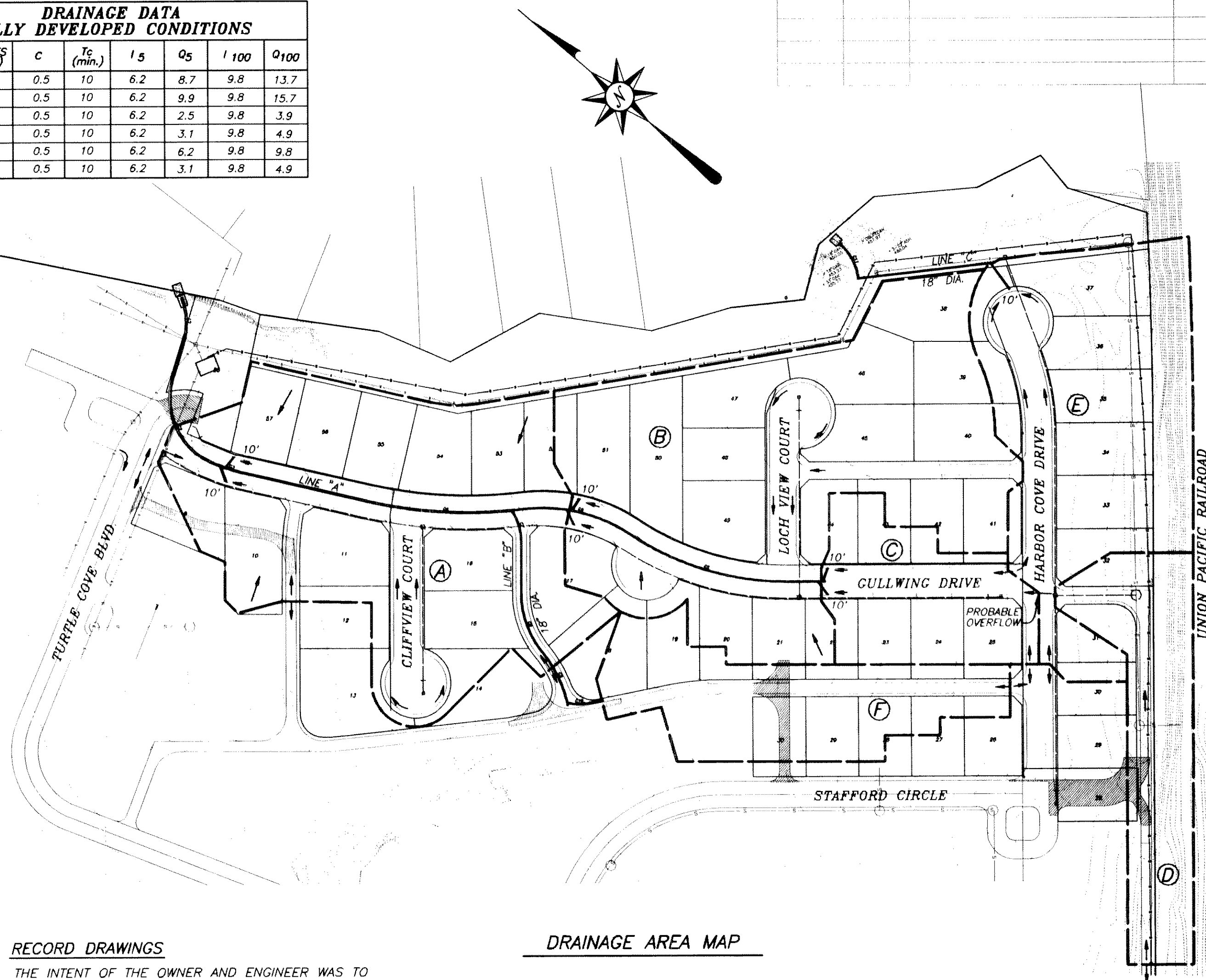
BASIN NO.	ACRES (AC.)	C	T _c (min.)	I _s	Q _s	I 100	Q100
A	2.8	0.5	10	6.2	8.7	9.8	13.7
B	3.2	0.5	10	6.2	9.9	9.8	15.7
C	0.8	0.5	10	6.2	2.5	9.8	3.9
D	1.0	0.5	10	6.2	3.1	9.8	4.9
E	2.0	0.5	10	6.2	6.2	9.8	9.8
F	1.1	0.5	10	6.2	3.1	9.8	4.9



PC 0+10.00 LINE "C"
CONST. TYPE B HDWL.
BEGIN 33" RCP
CONST. 8" THICK CONC.
RIP RAP AROUND HDWL.
IN ACCORDANCE WITH
NCTCOG
ITEM 8.1.5.3.b (TYP.)
TYPE "A"



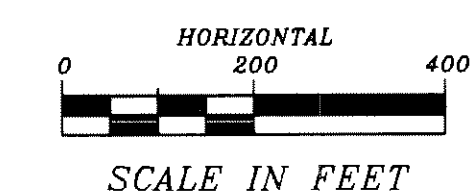
CAUTION!! APPROX. LOCATION OF EXISTING 14" SANITARY SEWER FORCE MAIN.



RECORD DRAWINGS

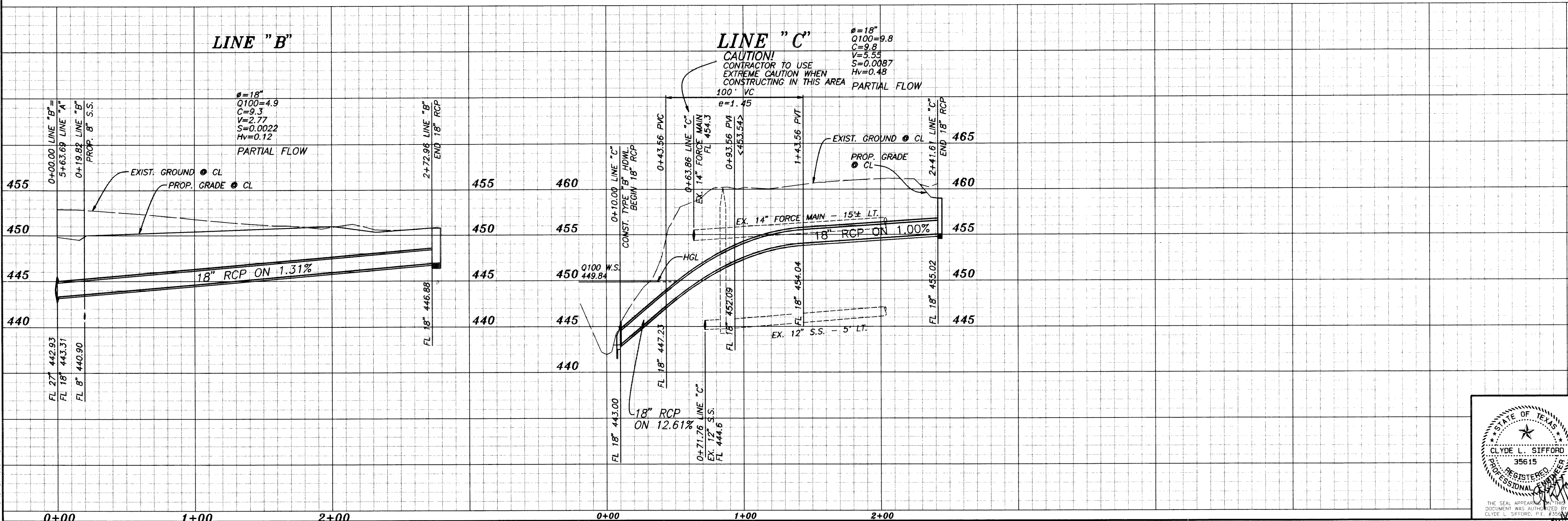
THE INTENT OF THE OWNER AND ENGINEER WAS TO CONSTRUCT THE FACILITIES ACCORDING TO THESE PLANS AS APPROVED BY THE CITY OF ROCKWALL. THE LINES AND GRADES WERE SET ON THE GROUND FOR CONSTRUCTION ACCORDING TO SAID PLANS. THE CITY OF ROCKWALL INSPECTED THE CONSTRUCTION. THE OWNER OR ENGINEER DID NOT VERIFY LINES OR GRADES AFTER CONSTRUCTION. WE ARE NOT AWARE OF ANY CHANGES OR REVISIONS TO THESE PLANS DURING CONSTRUCTION EXCEPT AS NOTED.

DRAINAGE AREA MAP

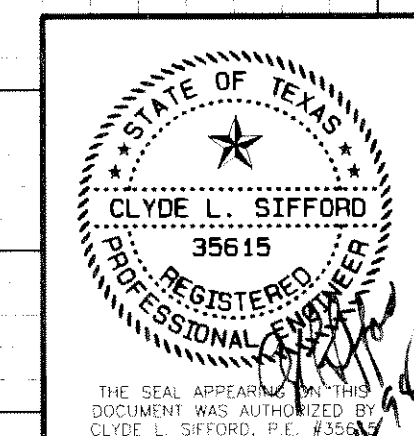


BENCHMARKS:

- SQUARE CUT ON NORTHEAST CURB ± 150' NORTHWEST OF RAILROAD ON TURTLE COVE BOULEVARD. ELEV. 469.36
- SQUARE CUT ON CENTERLINE OF INLET WESTERLY FROM CLUBHOUSE ENTRANCE (#700 TURTLE COVE BLVD). ELEV. 447.21



**LINES "B" & "C" & DRAINAGE AREA MAP
STORM DRAINAGE PLAN & PROFILE
TURTLE COVE ADDITION, PHASE 2
CITY OF ROCKWALL, TEXAS**

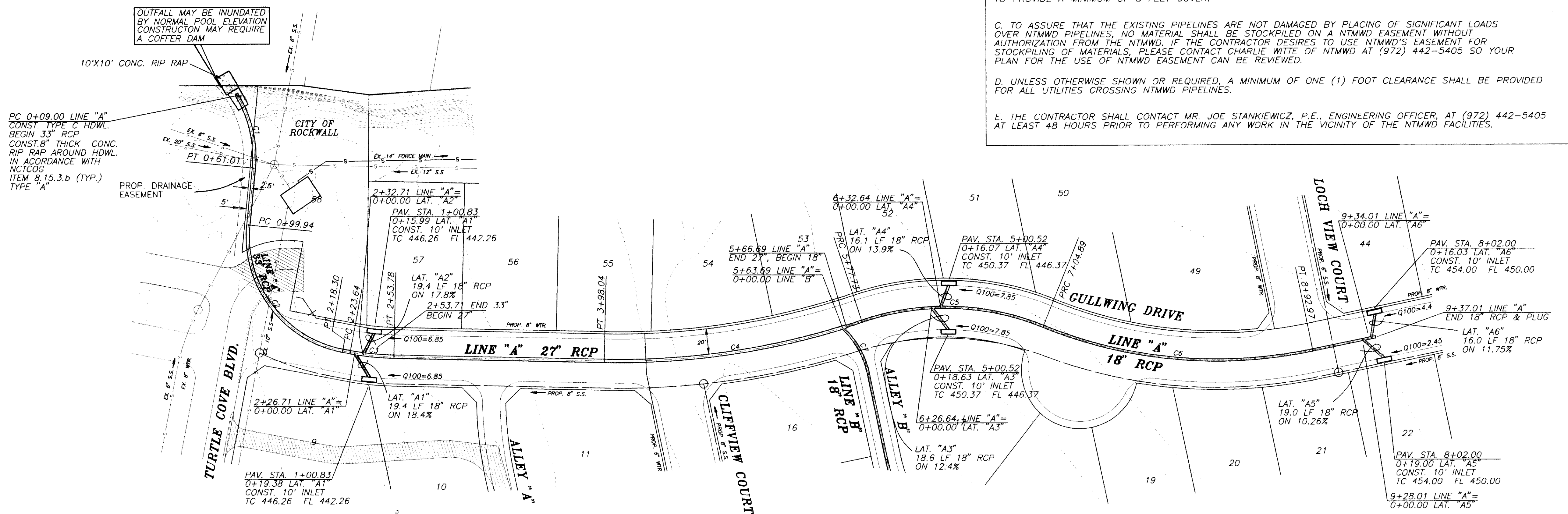


PBSJ POST, BUCKLEY, SCHUH & JERNIGAN, INC.
5999 SUMMERSIDE DRIVE ~ SUITE 202
DALLAS, TEXAS 75252
PH. (972) 380-2605 FAX (972) 380-2609

DESIGN	DRAWN	DATE	SCALE	FILE	SHEET NO.
PBSJ	PBSJ		AS SHOWN	95115.01	11

NORTH TEXAS MUNICIPAL WATER DISTRICT NOTES

- A. THE NORTH TEXAS MUNICIPAL WATER DISTRICT (NTMWD) HAS A 14-INCH FORCE MAIN LOCATED ON THIS SITE.
- B. OPERATION OF HEAVY EARTHMOVING EQUIPMENT, COMPACTION EQUIPMENT, OR HEAVY CONSTRUCTION EQUIPMENT, SUCH AS CONCRETE TRUCKS, SHALL BE RESTRICTED TO SPECIFIC CROSSING POINTS ACROSS NTMWD EASEMENTS, AS APPROVED BY THE NTMWD. THE CROSSINGS SHALL BE DESIGNATED AND VERIFIED TO PROVIDE A MINIMUM OF 5 FEET COVER.
- C. TO ASSURE THAT THE EXISTING PIPELINES ARE NOT DAMAGED BY PLACING OF SIGNIFICANT LOADS OVER NTMWD PIPELINES, NO MATERIAL SHALL BE STOCKPILED ON A NTMWD EASEMENT WITHOUT AUTHORIZATION FROM THE NTMWD. IF THE CONTRACTOR DESIRES TO USE NTMWD'S EASEMENT FOR STOCKPILING OF MATERIALS, PLEASE CONTACT CHARLIE WITTE OF NTMWD AT (972) 442-5405 SO YOUR PLAN FOR THE USE OF NTMWD EASEMENT CAN BE REVIEWED.
- D. UNLESS OTHERWISE SHOWN OR REQUIRED, A MINIMUM OF ONE (1) FOOT CLEARANCE SHALL BE PROVIDED FOR ALL UTILITIES CROSSING NTMWD PIPELINES.
- E. THE CONTRACTOR SHALL CONTACT MR. JOE STANKIEWICZ, P.E., ENGINEERING OFFICER, AT (972) 442-5405 AT LEAST 48 HOURS PRIOR TO PERFORMING ANY WORK IN THE VICINITY OF THE NTMWD FACILITIES.



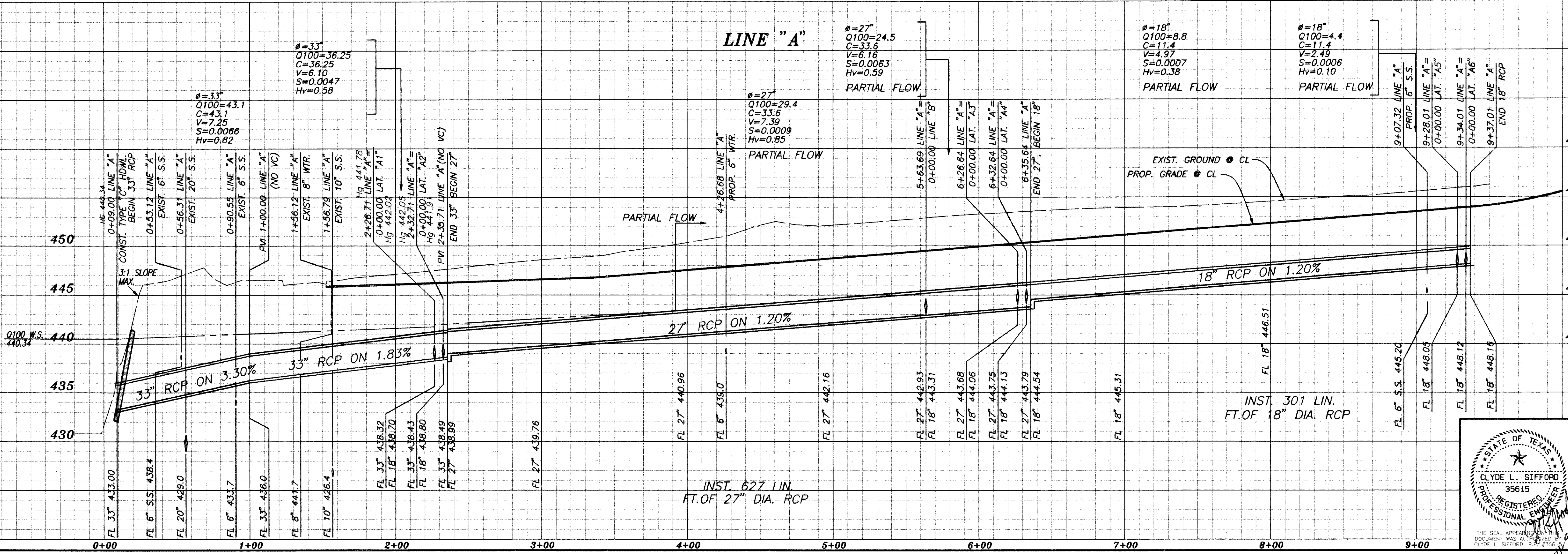
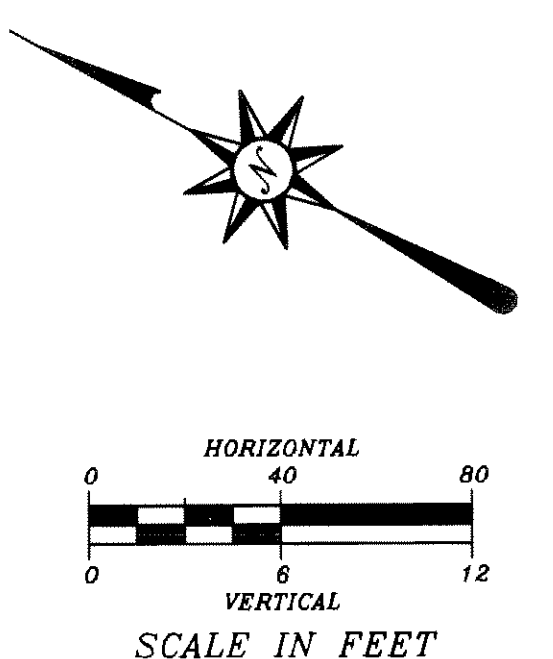
CURVE	DELTA	RADIUS	TANGENT	ARC
C1	37°12'11"	80.00'	26.93'	51.95'
C2	84°46'05"	80.00'	73.07'	118.36'
C3	09°35'38"	180.00'	15.11'	30.14'
C4	19°47'57"	520.00'	90.75'	179.69'
C5	40°28'36"	180.00'	66.36'	127.16'
C6	33°40'30"	320.00'	96.84'	188.08'

RECORD DRAWINGS

THE INTENT OF THE OWNER AND ENGINEER WAS TO CONSTRUCT THE FACILITIES ACCORDING TO THESE PLANS AS APPROVED BY THE CITY OF ROCKWALL. THE LINES AND GRADES WERE SET ON THE GROUND FOR CONSTRUCTION ACCORDING TO SAID PLANS. THE CITY OF ROCKWALL INSPECTED THE CONSTRUCTION. THE OWNER OR ENGINEER DID NOT VERIFY LINES OR GRADES AFTER CONSTRUCTION. WE ARE NOT AWARE OF ANY CHANGES OR REVISIONS TO THESE PLANS DURING CONSTRUCTION EXCEPT AS NOTED.

BENCHMARKS:

1. SQUARE CUT ON NORTHEAST CURB ± 150' NORTHWEST OF RAILROAD ON TURTLE COVE BOULEVARD. ELEV. 469.36
2. SQUARE CUT ON CENTERLINE OF INLET WESTERLY FROM CLUBHOUSE ENTRANCE (#700 TURTLE COVE BLVD). ELEV. 447.21



LINE "A"

STORM DRAINAGE PLAN & PROFILE

TURTLE COVE ADDITION, PHASE 2

CITY OF ROCKWALL, TEXAS

CLYDE L. SIFFORD
REGISTERED PROFESSIONAL ENGINEER
STATE OF TEXAS
39515

PBSJ

POST, BUCKLEY, SCHUH & JERNIGAN, INC.
5999 SUMMERSIDE DRIVE ~ SUITE 202
DALLAS, TEXAS 75252
PH. (972) 380-2805 FAX (972) 380-2809

DESIGN	DRAWN	DATE	SCALE	FILE	SHEET NO.
PBSJ	PBSJ		AS SHOWN	95115.01	10