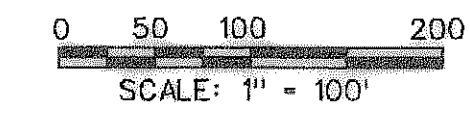


AS-BUILT MARCH 2010
 TO THE BEST OF OUR KNOWLEDGE CORWIN
 ENGINEERING, INC., HEREBY STATES THAT THIS PLAN IS
 AS-BUILT. THIS INFORMATION PROVIDED IS BASED ON
 SURVEYING AT THE SITE AND INFORMATION PROVIDED
 BY THE CONTRACTORS.



LEGEND

- PROP. STORM SEWER
- PROP. CURB INLETS
- PROP. CONC. HEADWALL
- EXIST. STORM SEWER
- DRAINAGE AREA DIVIDE
- FLOW ARROW
- DRAINAGE AREA NO.

RUNOFF COMPUTATIONS							
NO.	AREA AC.	RUNOFF COEFF. (C)	TOTAL Cx A	Tc min.	I (100)	Q (100)	Q (100) cfs
1	2.64	0.5	1.32	10	9.8	12.9	
2	0.49	0.5	0.25	10	9.8	2.4	
3	0.49	0.5	0.25	10	9.8	2.4	
4	7.01	0.5	3.51	10	9.8	34.3	
5	1.92	0.5	0.96	10	9.8	7.5	
6	3.95	0.5	1.98	10	9.8	19.4	
7	3.50	0.5	1.75	10	9.8	17.1	
8	1.45	0.5	0.73	10	9.8	7.1	
9	0.52	0.5	0.26	10	9.8	2.5	
10	0.52	0.5	0.26	10	9.8	2.5	
11	1.53	0.5	0.77	10	9.8	7.5	
12	1.40	0.5	0.70	10	9.8	6.9	
13	1.84	0.5	0.92	10	9.8	9.0	
14	0.90	0.5	0.45	10	9.8	4.4	
15	0.90	0.5	0.45	10	9.8	4.4	
16	1.66	0.5	0.83	10	9.8	8.2	
17	0.98	0.5	0.49	10	9.8	4.8	
18	0.81	0.5	0.41	10	9.8	4.0	
19	1.53	0.5	0.77	10	9.8	7.5	
20	1.31	0.5	0.66	10	9.8	6.4	
21A	1.92	0.5	0.96	10	9.8	9.4	
21B	0.43	0.5	0.22	10	9.8	2.1	
22	2.53	0.5	1.27	10	9.8	12.4	
23	1.95	0.5	0.97	10	9.8	9.6	
24	2.70	0.5	1.35	10	9.8	13.2	
25	2.27	0.5	1.14	10	9.8	11.1	
26	1.76	0.5	0.88	10	9.8	8.6	
27	7.29	0.5	3.65	10	9.8	35.7	
28	6.58	0.5	3.29	10	9.8	32.3	
29	1.87	0.5	0.94	10	9.8	9.2	
30	0.86	0.5	0.43	10	9.8	4.2	
31	0.75	0.5	0.38	10	9.8	3.7	
32	1.00	0.5	0.50	10	9.8	4.9	
33	1.03	0.5	0.52	10	9.8	5.0	
34	0.67	0.5	0.34	10	9.8	3.3	
35	2.37	0.5	1.19	10	9.8	11.6	
36	2.31	0.5	1.16	10	9.8	11.3	
37	1.05	0.5	0.53	10	9.8	5.1	
38	1.82	0.5	0.91	10	9.8	8.9	
39	1.63	0.5	0.82	10	9.8	8.0	
40	1.55	0.5	0.78	10	9.8	7.6	
41	1.64	0.5	0.82	10	9.8	8.0	
42	3.66	0.5	1.83	10	9.8	17.9	
43	1.82	0.5	0.91	10	9.8	8.9	
44	2.09	0.5	1.05	10	9.8	10.2	
45	0.84	0.5	0.42	10	9.8	4.1	
46	3.27	0.5	1.64	10	9.8	16.0	
47	1.59	0.5	0.80	10	9.8	7.8	
48	1.24	0.5	0.62	10	9.8	6.1	
49	1.52	0.5	0.76	10	9.8	7.4	
50	0.76	0.5	0.38	10	9.8	3.7	
51	4.65	0.5	2.33	10	9.8	22.8	
52	2.41	0.5	1.21	10	9.8	11.6	
53	0.97	0.5	0.49	10	9.8	4.8	
54	0.23	0.5	0.12	10	9.8	1.1	
55	1.82	0.5	0.91	10	9.8	8.9	
56	1.11	0.5	0.56	10	9.8	5.4	
57	2.08	0.5	1.03	10	9.8	10.1	
58	1.97	0.5	0.99	10	9.8	9.7	
59	0.82	0.5	0.41	10	9.8	4.0	
60	13.30	0.5	6.65	10	9.8	65.2	
61	0.79	0.5	0.40	10	9.8	3.9	
62	1.07	0.5	0.54	10	9.8	5.2	
63	2.30	0.5	1.15	10	9.8	11.3	
64	2.66	0.5	1.33	10	9.8	13.0	
65	0.57	0.5	0.29	10	9.8	2.8	
66	0.57	0.5	0.29	10	9.8	2.8	
67	2.33	0.5	1.17	10	9.8	12.4	
68	0.33	0.5	0.17	10	9.8	1.6	
69	1.07	0.5	0.54	10	9.8	5.2	
70	0.73	0.5	0.37	10	9.8	3.6	
71	0.86	0.5	0.43	10	9.8	4.2	
72	0.32	0.5	0.16	10	9.8	1.6	
73	1.87	0.5	0.94	10	9.8	9.2	
74	2.01	0.5	1.01	10	9.8	12.7	
75	0.85	0.5	0.43	10	9.8	4.2	
76	0.23	0.5	0.12	10	9.8	1.1	
77	0.27	0.5	0.14	10	9.8	1.3	

** FUTURE DEVELOPMENT



The seal appearing on this document was authorized by Brandon Davidson P.E. 87682, on March 26, 2010

CORWIN ENGINEERING, INC.
 200 W. BELMONT, SUITE E
 ALLEN, TEXAS 75013 (972) 396-1200

DEVELOPMENT PLANS FOR
STONE CREEK PHASE I
 ROCKWALL, TEXAS

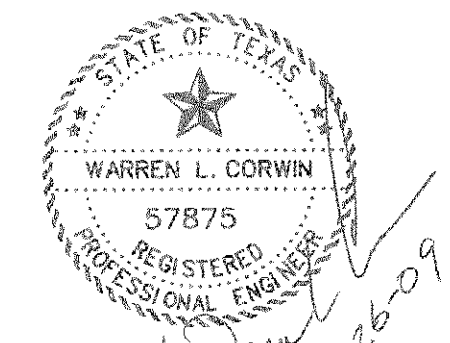
DRAINAGE AREA MAP

DRAWN BY	DESIGNED BY	CHECKED BY	SHEET NO.
	CEI	CEI	
JOB NUMBER	DATE	SCALE:	
08033	JANUARY 2008	1"=100'	5 OF 62




0 50 100 200
SCALE: 1" = 100'

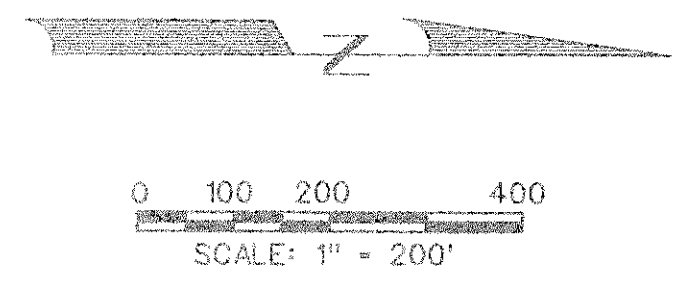
AS-BUILT DECEMBER 2008
TO THE BEST OF OUR KNOWLEDGE CORWIN ENGINEERING, INC. HEREBY STATES THAT THIS PLAN IS AS-BUILT. THIS INFORMATION PROVIDED IS BASED ON SURVEYING AT THE SITE AND INFORMATION PROVIDED BY THE CONTRACTORS.



The seal appearing on this document was authorized by Warren L. Corwin, P.E. 57875, on January 26, 2009

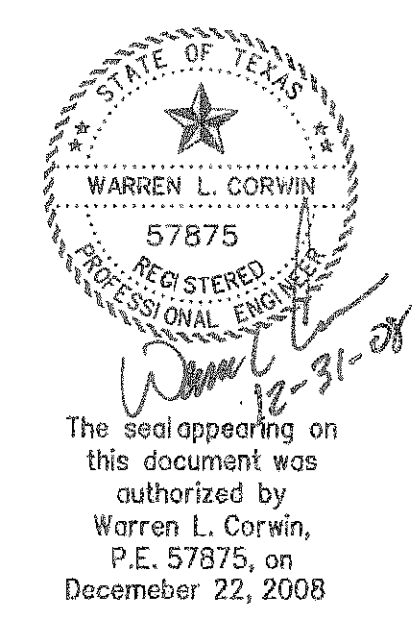
- LEGEND**
- PROP. STORM SEWER
 - PROP. CURB INLETS
 - PROP. CONC. HEADWALL
 - EXIST. STORM SEWER
 - DRAINAGE AREA DIVIDE
 - FLOW ARROW
 - DRAINAGE AREA NO.

 CORWIN ENGINEERING, INC. 200 W. BELMONT, SUITE E ALLEN, TEXAS 75013 (972) 396-1200 TBP# FIRM #5957			
DEVELOPMENT PLANS FOR STONE CREEK PHASE I ROCKWALL, TEXAS			
DRAINAGE AREA MAP			
DRAWN BY	DESIGNED BY	CHECKED BY	SHEET NO.
JOB NUMBER	DATE	SCALE:	6 of 62
08033	JANUARY 2008	1"=100'	



RUNOFF CALCULATIONS - ULTIMATE DEVELOPED CONDITIONS						
Area #	Area (sf)	Area (acres)	Proposed Runoff Coefficient	Tc - Existing (min)	Rainfall Intensity (in/hr)	Q - Undeveloped (cfs)
4 (offsite)	892204	20.5	0.35	20	8.3	59.5
5	774004	17.8	0.50	10	9.8	87.1
6	3863661	88.7	0.50	10	9.8	434.6
7	3017581	69.3	0.50	10	9.8	339.4
8	3978129	91.3	0.50	10	9.8	447.5
9	798110	18.3	0.50	10	9.8	89.9
12	112897	2.6	0.90	10	9.8	22.9

AS-BUILT DECEMBER 2008
 TO THE BEST OF OUR KNOWLEDGE CORWIN ENGINEERING, INC. HEREBY STATES THAT THIS PLAN IS AS-BUILT. THIS INFORMATION PROVIDED IS BASED ON SURVEYING AT THE SITE AND INFORMATION PROVIDED BY THE CONTRACTORS.

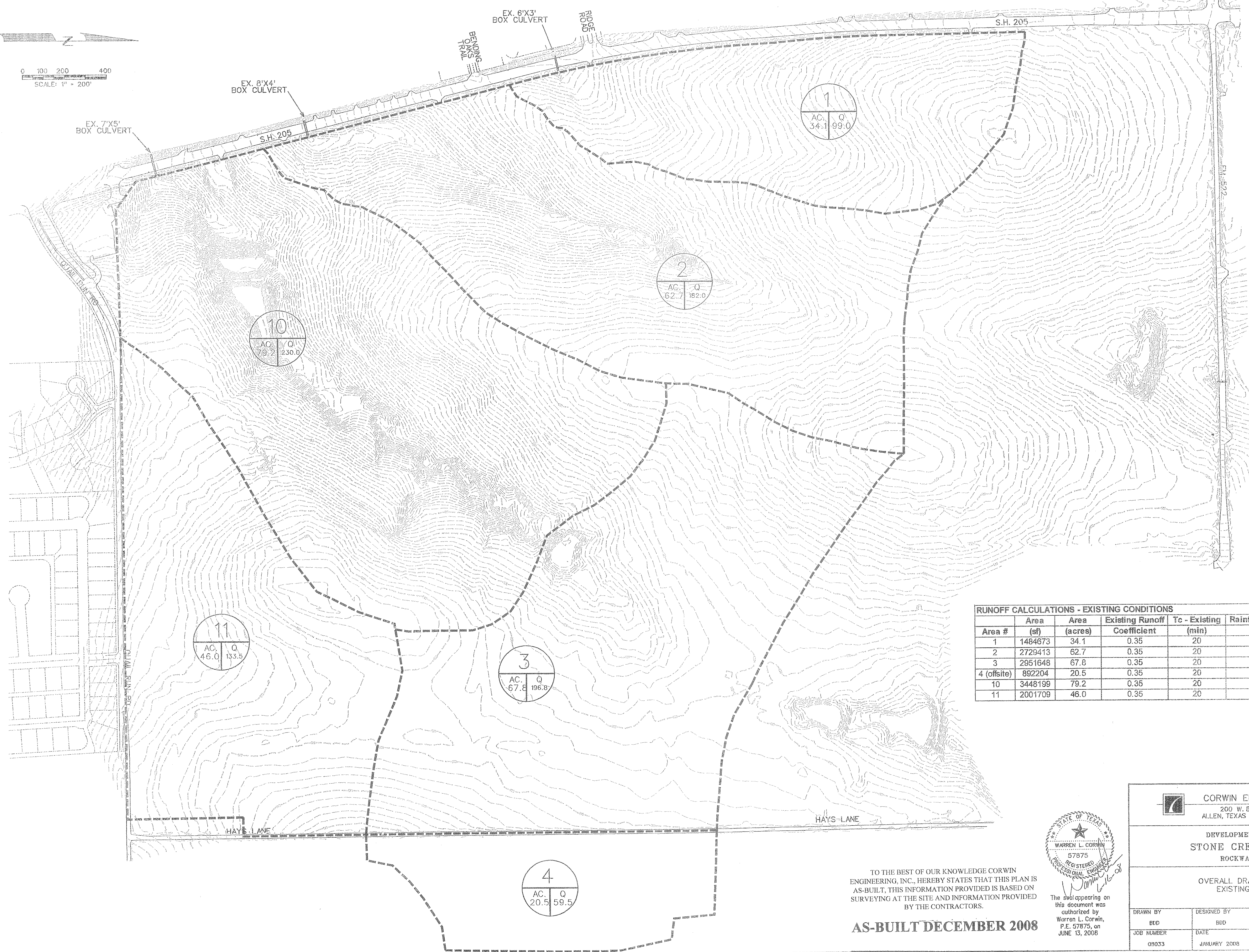
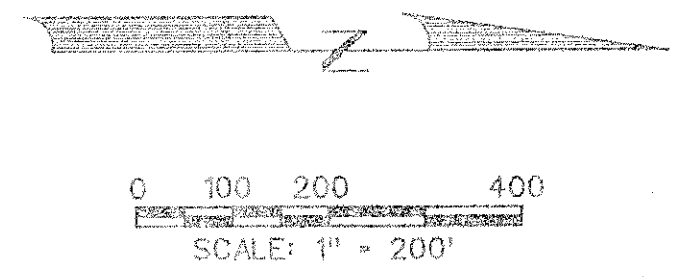


CORWIN ENGINEERING, INC.
 200 W. BELMONT, SUITE E
 ALLEN, TEXAS 75013 (972) 396-1200

DEVELOPMENT PLANS FOR
STONE CREEK PHASE I
 ROCKWALL, TEXAS

OVERALL DRAINAGE AREA MAP
 PHASE I - DEVELOPED CONDITIONS

DRAWN BY BDD	DESIGNED BY BDD	CHECKED BY BDD	SHEET NO. 9 OF 62
JOB NUMBER 08033	DATE JANUARY 2008	SCALE: 1"=200'	



10

AC.	Q
79.2	230.0

2

AC.	Q
62.7	182.0

1

AC.	Q
34.1	99.0

11

AC.	Q
46.0	133.5

3

AC.	Q
67.8	196.8

4

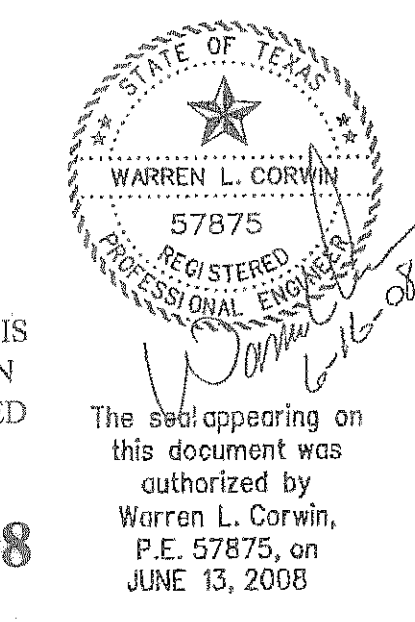
AC.	Q
20.5	59.5

RUNOFF CALCULATIONS - EXISTING CONDITIONS

Area #	Area (sf)	Area (acres)	Existing Runoff Coefficient	Tc - Existing (min)	Rainfall Intensity (in/hr)	Q - Undeveloped (cfs)
1	1484673	34.1	0.35	20	8.3	99.0
2	2729413	62.7	0.35	20	8.3	182.0
3	2951648	67.8	0.35	20	8.3	196.8
4 (offsite)	892204	20.5	0.35	20	8.3	59.5
10	3448199	79.2	0.35	20	8.3	230.0
11	2001709	46.0	0.35	20	8.3	133.5

TO THE BEST OF OUR KNOWLEDGE CORWIN ENGINEERING, INC. HEREBY STATES THAT THIS PLAN IS AS-BUILT, THIS INFORMATION PROVIDED IS BASED ON SURVEYING AT THE SITE AND INFORMATION PROVIDED BY THE CONTRACTORS.

AS-BUILT DECEMBER 2008

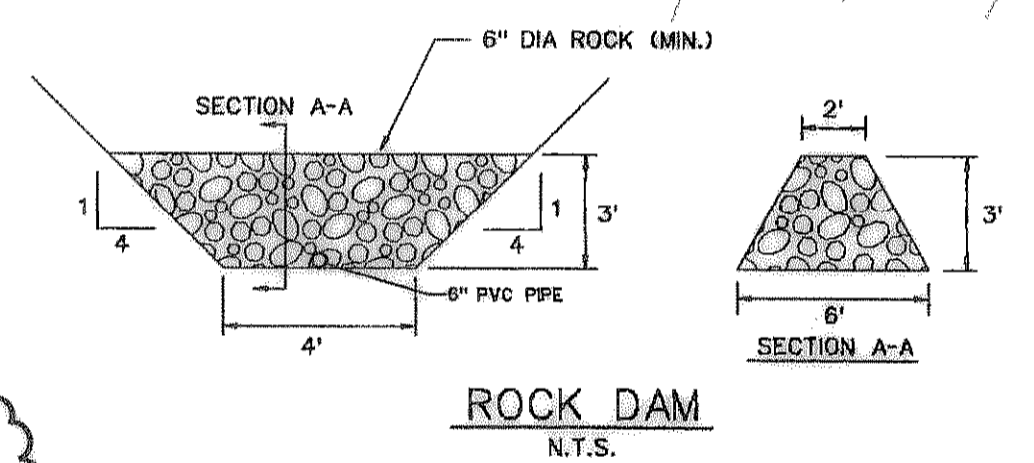
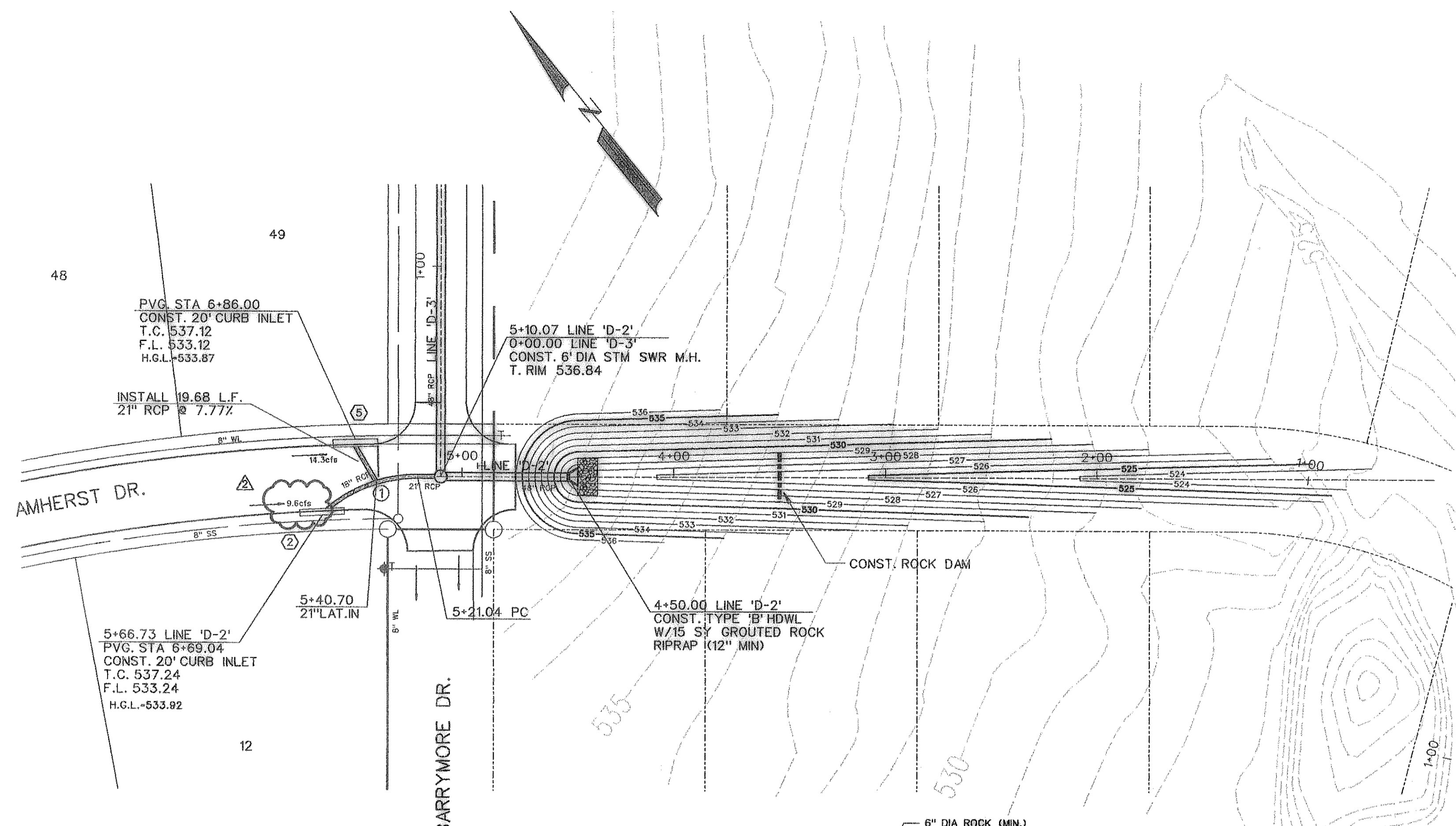
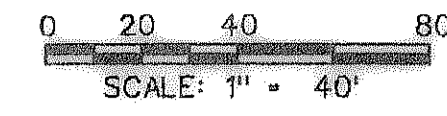


CORWIN ENGINEERING, INC.
200 W. BELMONT, SUITE E
ALLEN, TEXAS 75013 (972) 396-1200

DEVELOPMENT PLANS FOR
STONE CREEK PHASE I
ROCKWALL, TEXAS

OVERALL DRAINAGE AREA MAP
EXISTING CONDITIONS

DRAWN BY BDD	DESIGNED BY BDD	CHECKED BY BDD	SHEET NO. 8 OF 62
JOB NUMBER 08033	DATE JANUARY 2008	SCALE 1"=200'	

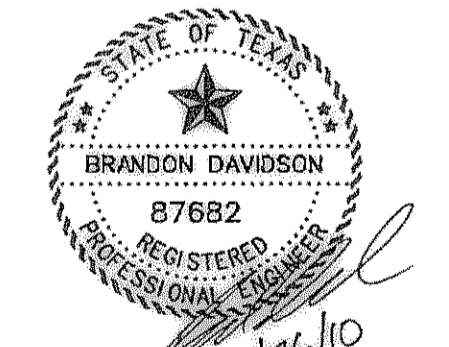
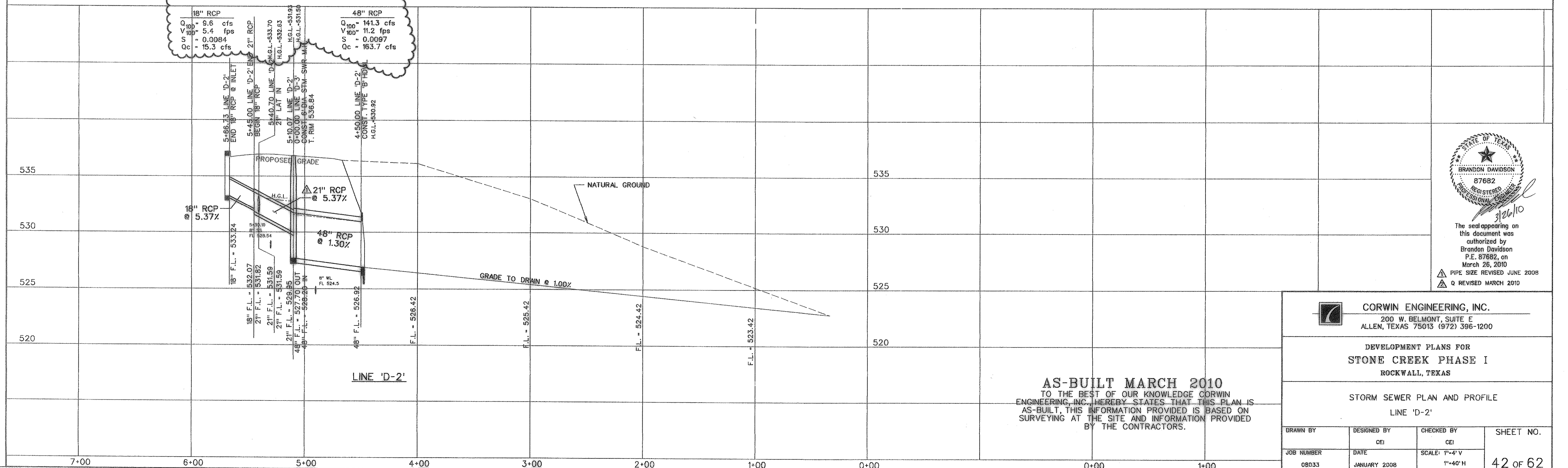


CURVE NO.	CURVE DATA		
	①	②	③
Δ	40° 16' 12"	0' 1"	0' 1"
R	65.00'	'	'
T	23.83'	'	'
L	45.69'	'	'

21" RCP
 $Q_{100} = 23.9$ cfs
 $V_{100} = 9.9$ fps
 $S = 0.0228$
 $Q_c = 36.7$ cfs

18" RCP
 $Q_{100} = 9.6$ cfs
 $V_{100} = 5.4$ fps
 $S = 0.0084$
 $Q_c = 15.3$ cfs

48" RCP
 $Q_{100} = 141.3$ cfs
 $V_{100} = 11.2$ fps
 $S = 0.0097$
 $Q_c = 163.7$ cfs



The seal appearing on this document was authorized by Brandon Davidson P.E. 87682, on March 26, 2010
 PIPE SIZE REVISED JUNE 2008
 Q REVISED MARCH 2010

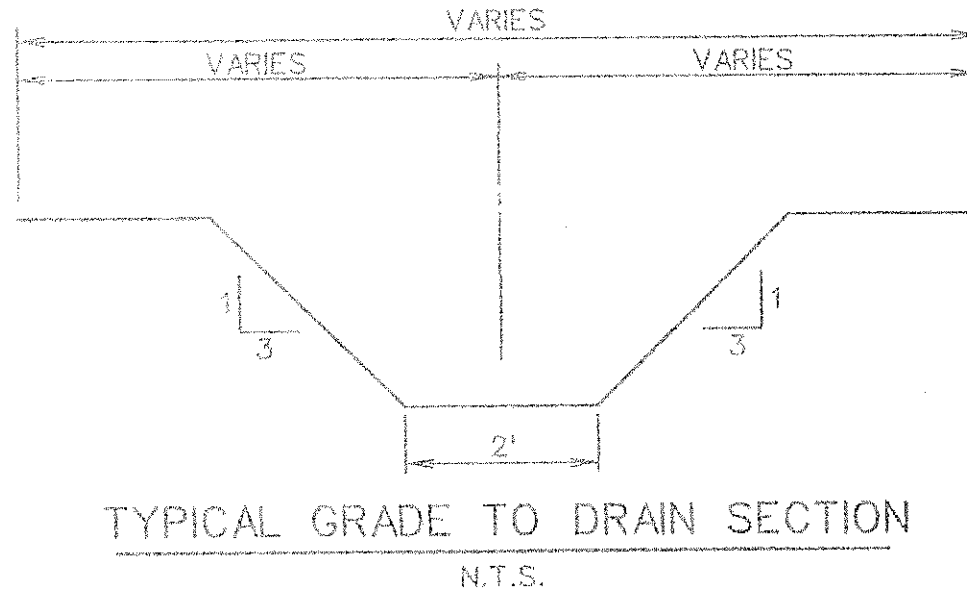
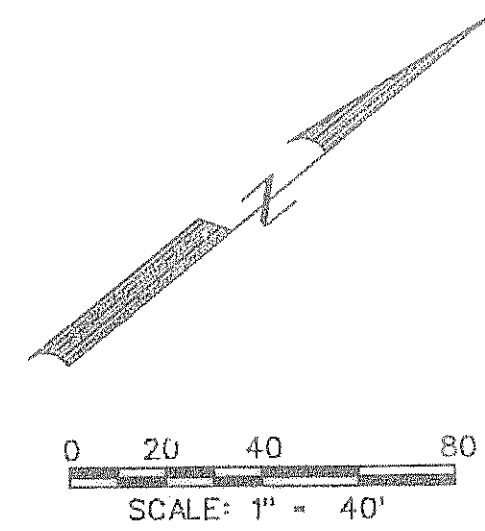
CORWIN ENGINEERING, INC.
 200 W. BELMONT, SUITE E
 ALLEN, TEXAS 75013 (972) 396-1200

DEVELOPMENT PLANS FOR
STONE CREEK PHASE I
 ROCKWALL, TEXAS

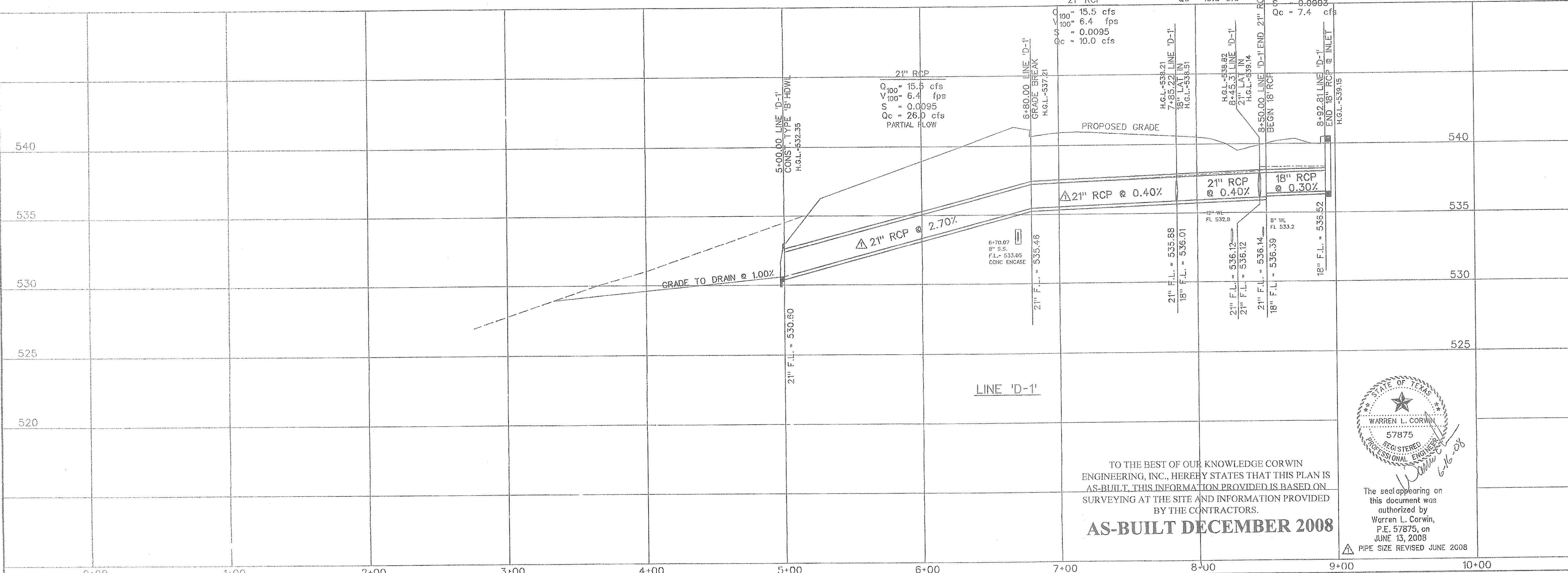
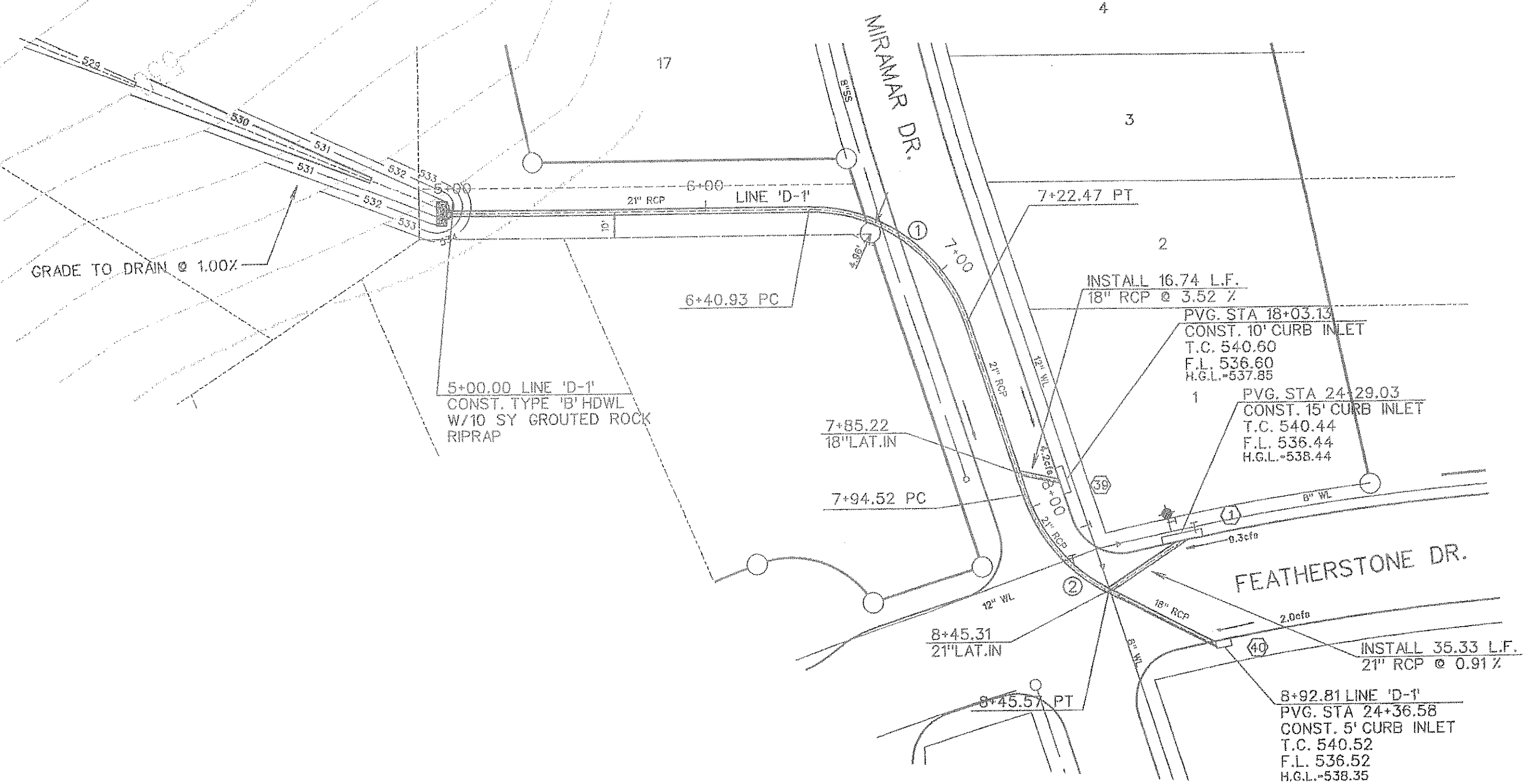
STORM SEWER PLAN AND PROFILE
 LINE 'D-2'

AS-BUILT MARCH 2010
 TO THE BEST OF OUR KNOWLEDGE CORWIN ENGINEERING, INC. HEREBY STATES THAT THIS PLAN IS AS-BUILT, THIS INFORMATION PROVIDED IS BASED ON SURVEYING AT THE SITE AND INFORMATION PROVIDED BY THE CONTRACTORS.

DRAWN BY	DESIGNED BY CEI	CHECKED BY CEI	SHEET NO. 42 of 62
JOB NUMBER OBD33	DATE JANUARY 2008	SCALE: 1"=4' V 1"=40' H	



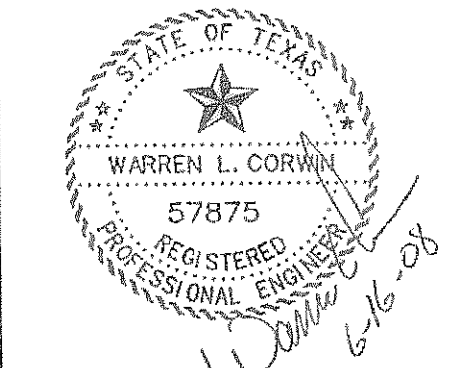
CURVE NO.	CURVE DATA		
	①	②	③
Δ	71° 52' 06"	45° 00' 00"	0° 11"
R	65.00'	65.00'	'
T	47.11'	26.92'	'
L	81.53'	51.05'	'



21" RCP	18" RCP
Q ₁₀₀ = 11.3 cfs	Q ₁₀₀ = 2.0 cfs
V ₁₀₀ = 4.7 fps	V ₁₀₀ = 1.1 fps
S = 0.0051	S = 0.0063
Q _c = 10.0 cfs	Q _c = 7.4 cfs

TO THE BEST OF OUR KNOWLEDGE CORWIN ENGINEERING, INC., HEREBY STATES THAT THIS PLAN IS AS-BUILT. THIS INFORMATION PROVIDED IS BASED ON SURVEYING AT THE SITE AND INFORMATION PROVIDED BY THE CONTRACTORS.

AS-BUILT DECEMBER 2008



The seal appearing on this document was authorized by Warren L. Corwin, P.E. 57875, on JUNE 13, 2008

PIPE SIZE REVISED JUNE 2008

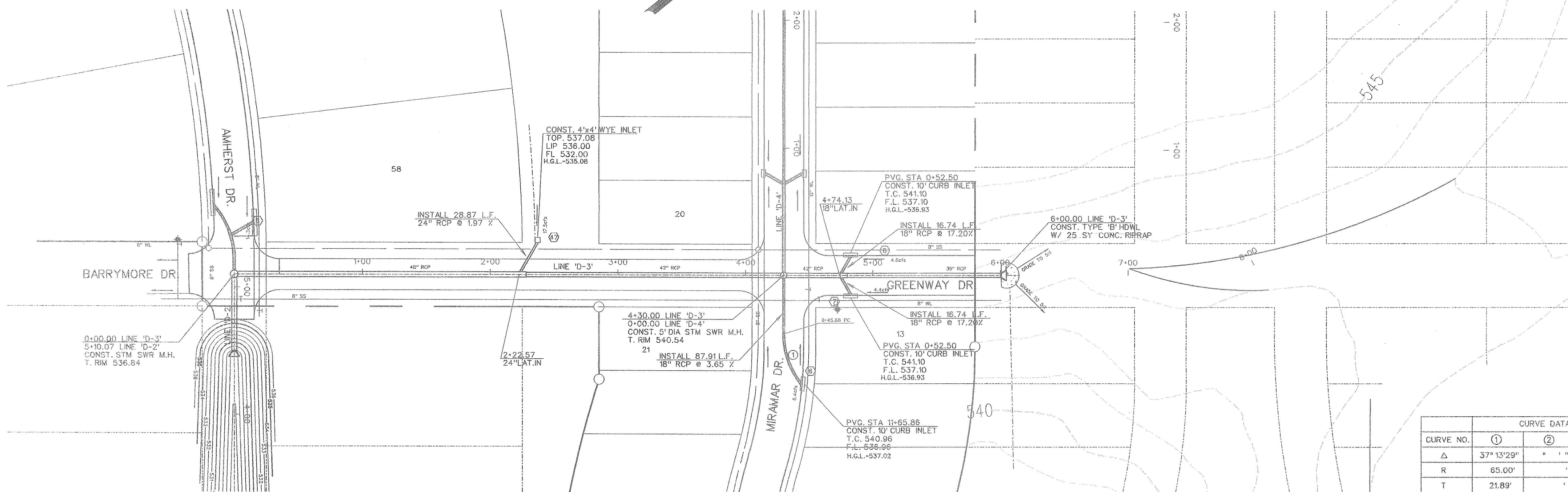
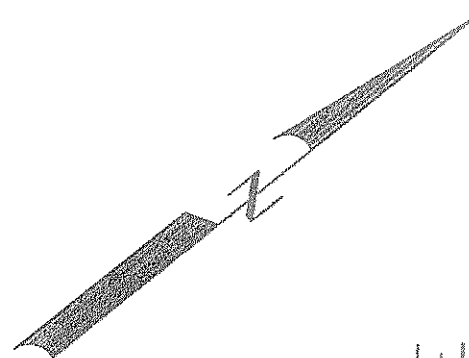
CORWIN ENGINEERING, INC.
 200 W. BELMONT, SUITE E
 ALLEN, TEXAS 75013 (972) 396-1200

DEVELOPMENT PLANS FOR
STONE CREEK PHASE I
 ROCKWALL, TEXAS

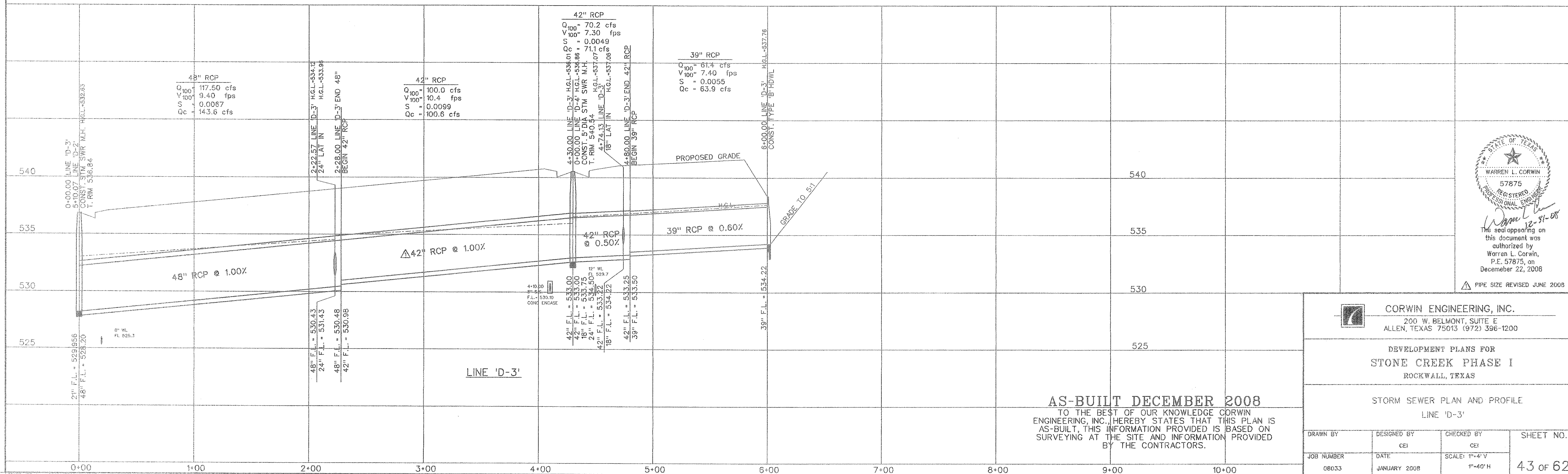
STORM SEWER PLAN AND PROFILE
 LINE 'D-1'

DRAWN BY	DESIGNED BY	CHECKED BY	SHEET NO.
	CEJ	CEJ	
JOB NUMBER	DATE	SCALE: H=4' V=1"	41 of 62
08033	JANUARY 2008		

0 20 40 80
SCALE: 1" = 40'



CURVE DATA			
CURVE NO.	①	②	③
Δ	37° 13' 29"	° "	° "
R	65.00'	'	'
T	21.89'	'	'
L	42.23'	'	'



STATE OF TEXAS
WARREN L. CORWIN
57875
REGISTERED PROFESSIONAL ENGINEER
The seal appearing on this document was authorized by Warren L. Corwin, P.E. 57875, on December 22, 2008

PIPE SIZE REVISED JUNE 2008

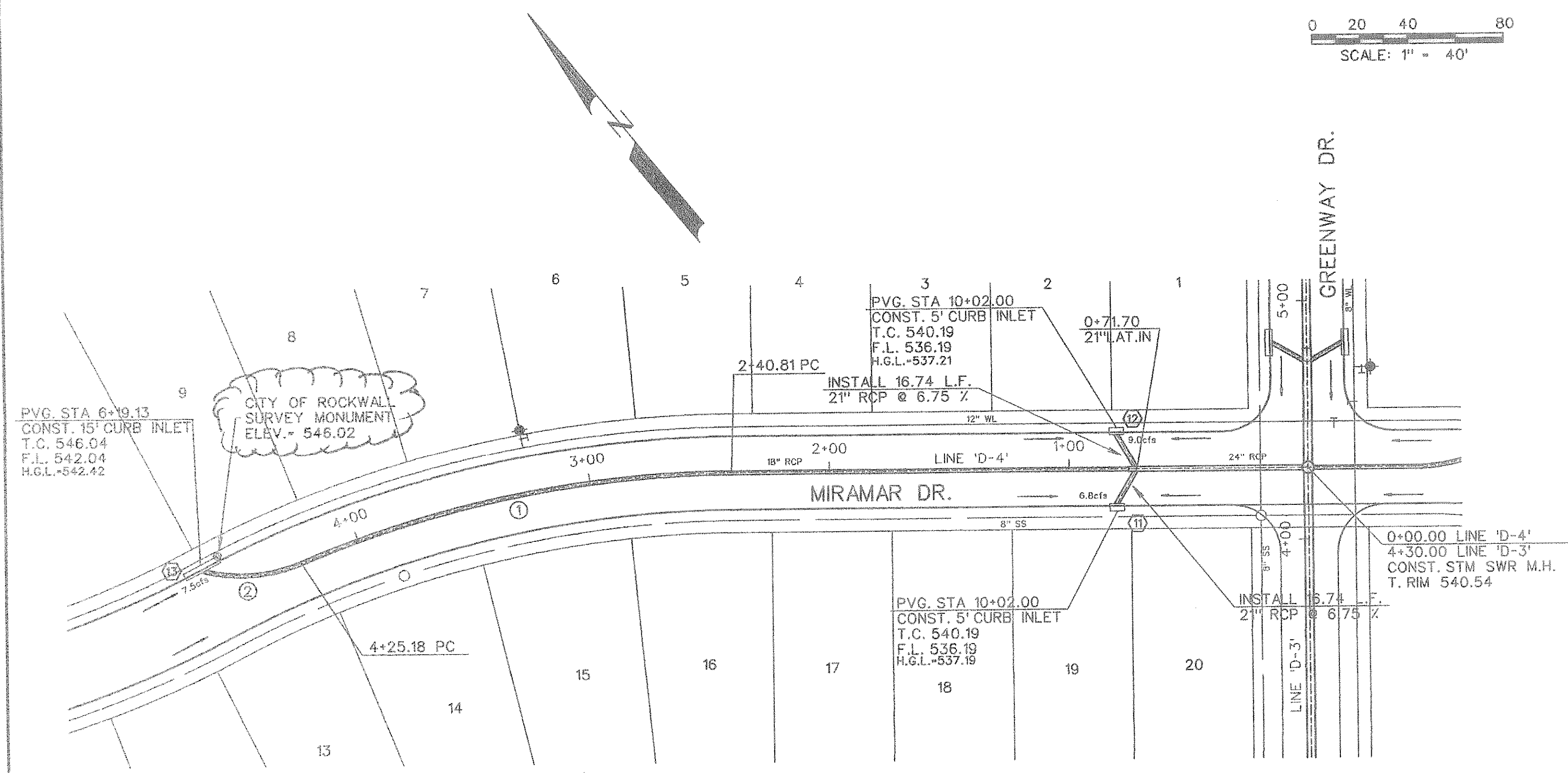
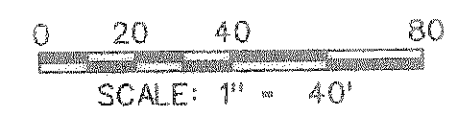
CORWIN ENGINEERING, INC.
200 W. BELMONT, SUITE E
ALLEN, TEXAS 75013 (972) 396-1200

DEVELOPMENT PLANS FOR
STONE CREEK PHASE I
ROCKWALL, TEXAS

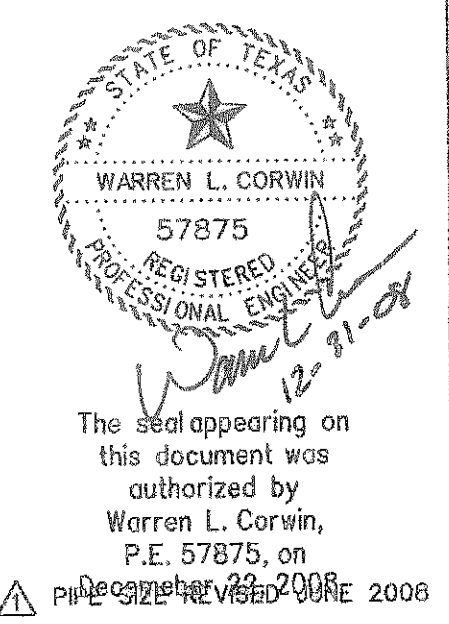
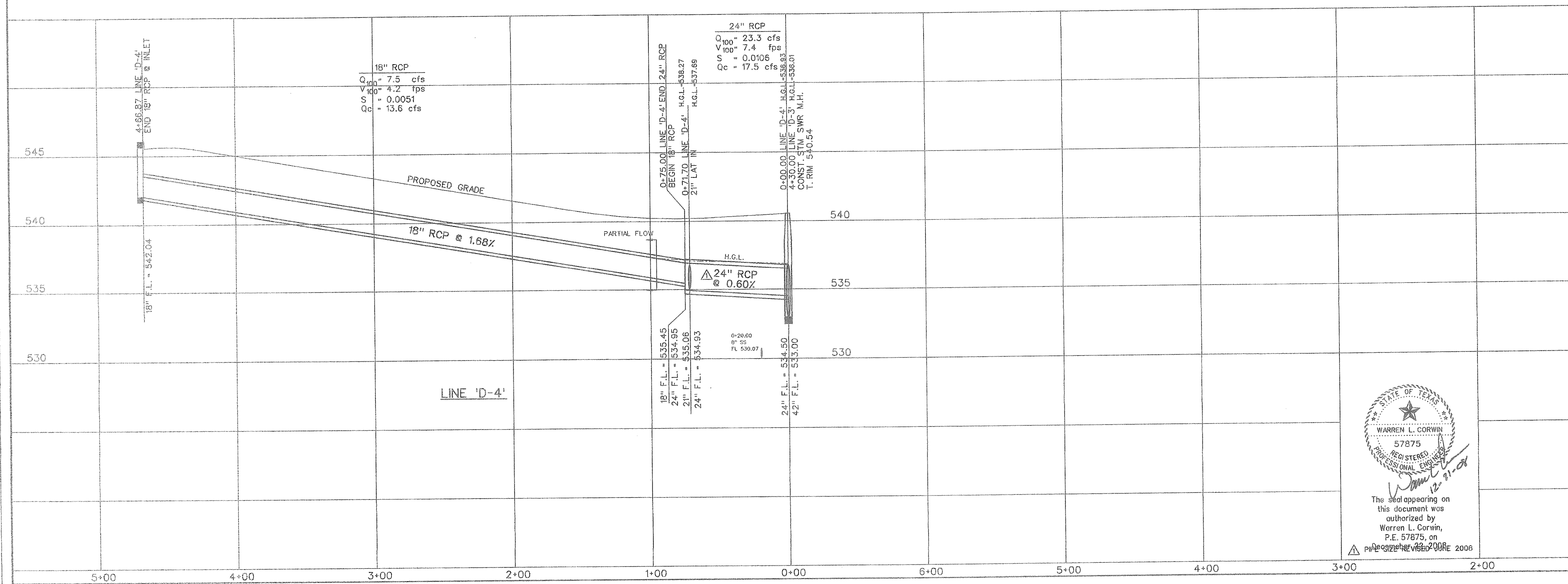
STORM SEWER PLAN AND PROFILE
LINE 'D-3'

AS-BUILT DECEMBER 2008
TO THE BEST OF OUR KNOWLEDGE CORWIN ENGINEERING, INC. HEREBY STATES THAT THIS PLAN IS AS-BUILT, THIS INFORMATION PROVIDED IS BASED ON SURVEYING AT THE SITE AND INFORMATION PROVIDED BY THE CONTRACTORS.

DRAWN BY	DESIGNED BY	CHECKED BY	SHEET NO.
	CEI	CEI	
JOB NUMBER	DATE	SCALE: 1"=4'-V	
08033	JANUARY 2008	1"=40' H	43 OF 62



CURVE DATA		
CURVE NO.	①	②
Δ	22° 43'01"	36° 45'08"
R	465.00'	65.00'
T	93.41'	21.59'
L	184.37'	41.69'

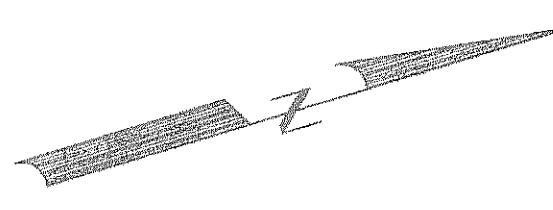


CORWIN ENGINEERING, INC.
 200 W. BELMONT, SUITE E
 ALLEN, TEXAS 75013 (972) 396-1200

DEVELOPMENT PLANS FOR
STONE CREEK PHASE I
 ROCKWALL, TEXAS

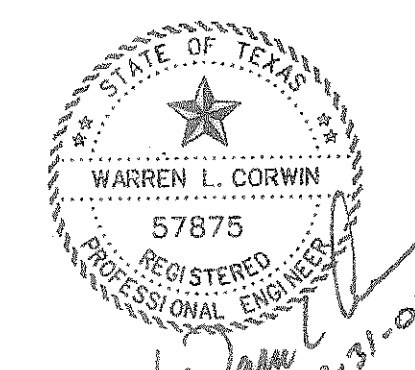
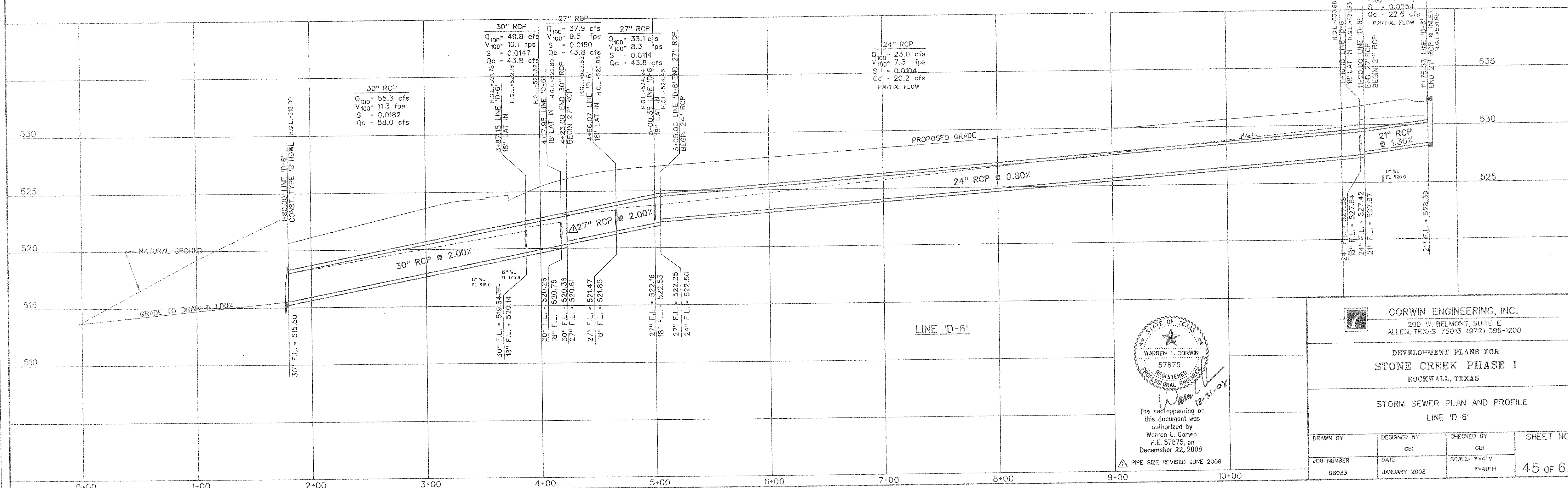
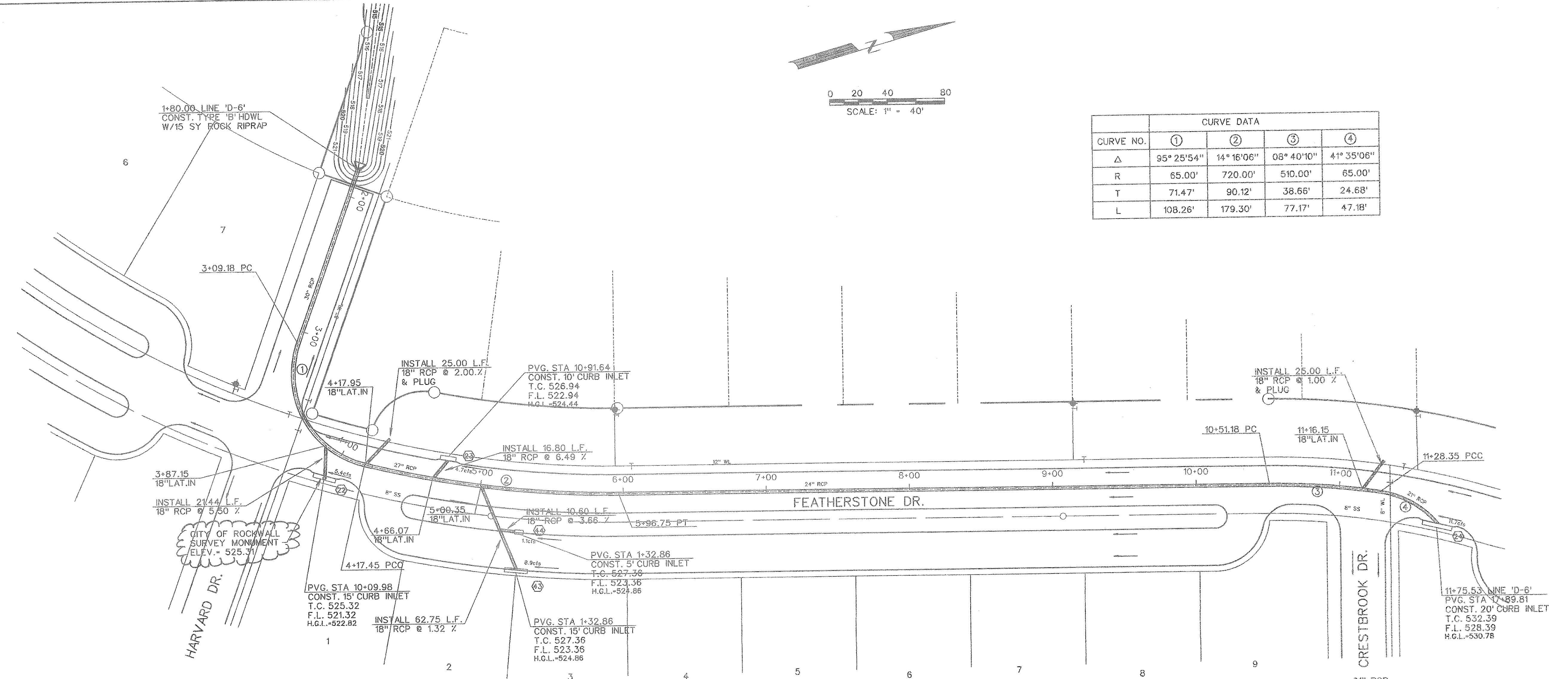
STORM SEWER PLAN AND PROFILE
 LINE 'D-4'

DRAWN BY	DESIGNED BY	CHECKED BY	SHEET NO.
	CEI	CEI	
JOB NUMBER	DATE	SCALE	
08033	JANUARY 2008	1"=40' H 1"=40' V	44 of 62



0 20 40 80
SCALE: 1" = 40'

CURVE NO.	CURVE DATA			
	①	②	③	④
Δ	95° 25' 54"	14° 16' 06"	08° 40' 10"	41° 35' 06"
R	65.00'	720.00'	510.00'	65.00'
T	71.47'	90.12'	36.65'	24.68'
L	108.26'	179.30'	77.17'	47.18'



The seal appearing on this document was authorized by Warren L. Corwin, P.E. 57875, on December 22, 2008.

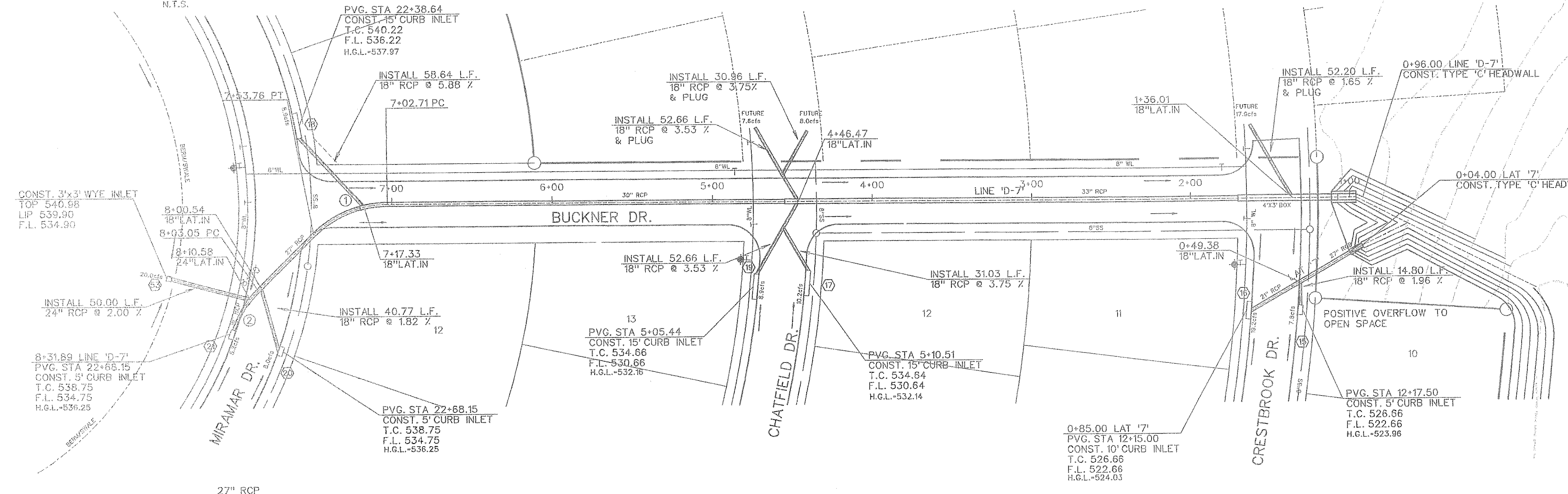
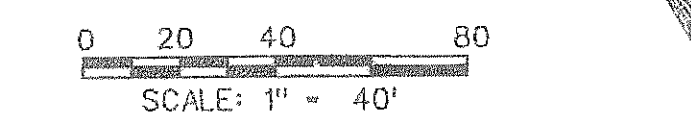
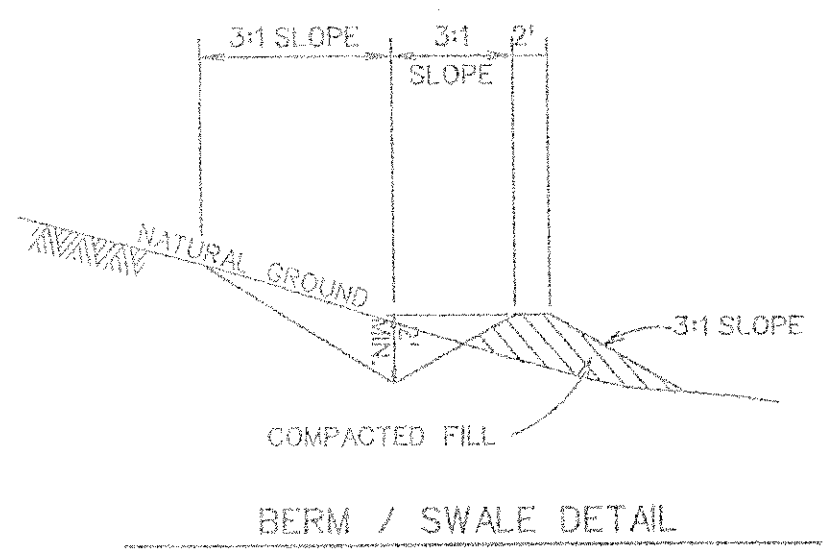
PIPE SIZE REVISED JUNE 2008

CORWIN ENGINEERING, INC.
200 W. BELMONT, SUITE E
ALLEN, TEXAS 75013 (972) 396-1200

DEVELOPMENT PLANS FOR
STONE CREEK PHASE I
ROCKWALL, TEXAS

STORM SEWER PLAN AND PROFILE
LINE 'D-6'

DRAWN BY	DESIGNED BY	CHECKED BY	SHEET NO.
	CEI	CEI	
JOB NUMBER	DATE	SCALE:	
08033	JANUARY 2008	1"=4' V 1"=40' H	45 OF 62



CURVE DATA			
CURVE NO.	①	②	③
Δ	45° 00' 00"	25° 49' 36"	0° 00' 00"
R	65.00'	65.00'	1'
T	26.92'	14.90'	1'
L	51.05'	29.30'	1'

27" RCP
 Q₁₀₀ = 25.2 cfs
 V₁₀₀ = 6.3 fps
 S = 0.0066
 Q_c = 36.7 cfs
 PARTIAL FLOW

18" RCP
 Q₁₀₀ = 5.2 cfs
 V₁₀₀ = 2.0 fps
 S = 0.0024
 Q_c = 10.6 cfs
 PARTIAL FLOW

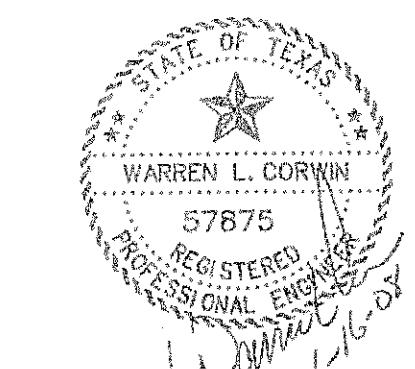
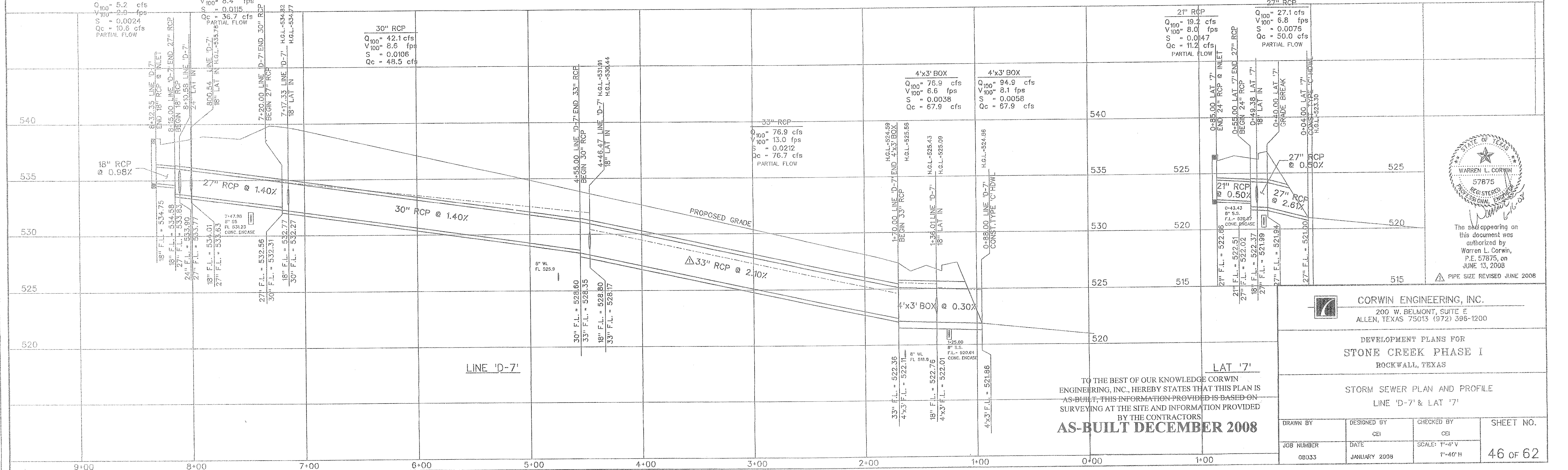
30" RCP
 Q₁₀₀ = 42.1 cfs
 V₁₀₀ = 8.6 fps
 S = 0.0106
 Q_c = 48.5 cfs

21" RCP
 Q₁₀₀ = 19.2 cfs
 V₁₀₀ = 8.0 fps
 S = 0.0147
 Q_c = 11.2 cfs
 PARTIAL FLOW

27" RCP
 Q₁₀₀ = 27.1 cfs
 V₁₀₀ = 6.8 fps
 S = 0.0076
 Q_c = 50.0 cfs
 PARTIAL FLOW

4'x3' BOX
 Q₁₀₀ = 76.9 cfs
 V₁₀₀ = 6.6 fps
 S = 0.0038
 Q_c = 67.9 cfs

4'x3' BOX
 Q₁₀₀ = 94.9 cfs
 V₁₀₀ = 8.1 fps
 S = 0.0058
 Q_c = 67.9 cfs



The seal appearing on this document was authorized by Warren L. Corwin, P.E. 57875, on JUNE 13, 2008
 PIPE SIZE REVISED JUNE 2008

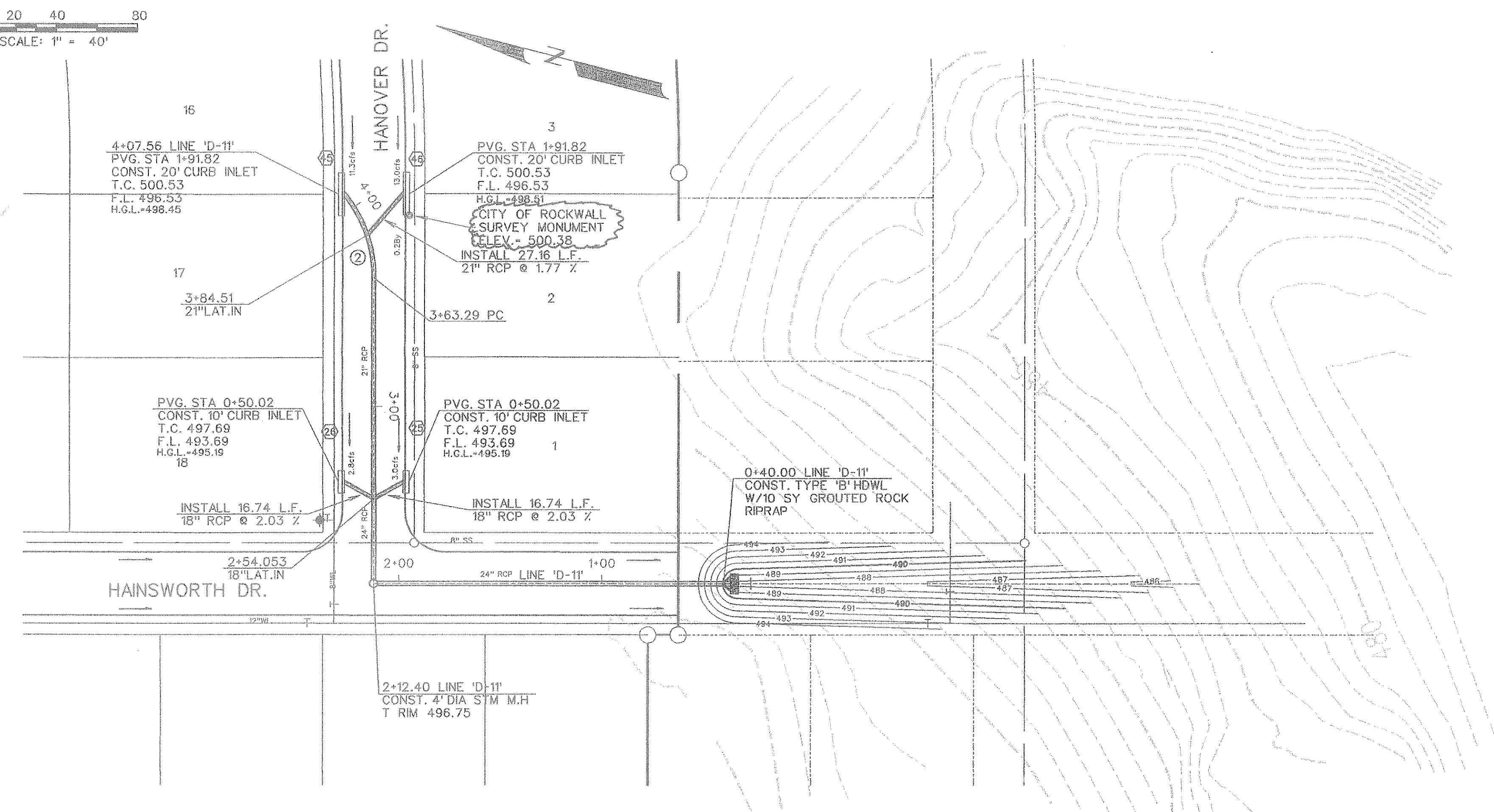
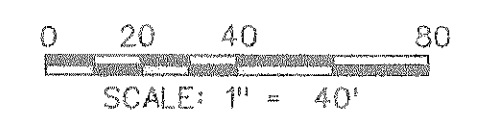
CORWIN ENGINEERING, INC.
 200 W. BELMONT, SUITE E
 ALLEN, TEXAS 75013 (972) 396-1200

DEVELOPMENT PLANS FOR
STONE CREEK PHASE I
 ROCKWALL, TEXAS

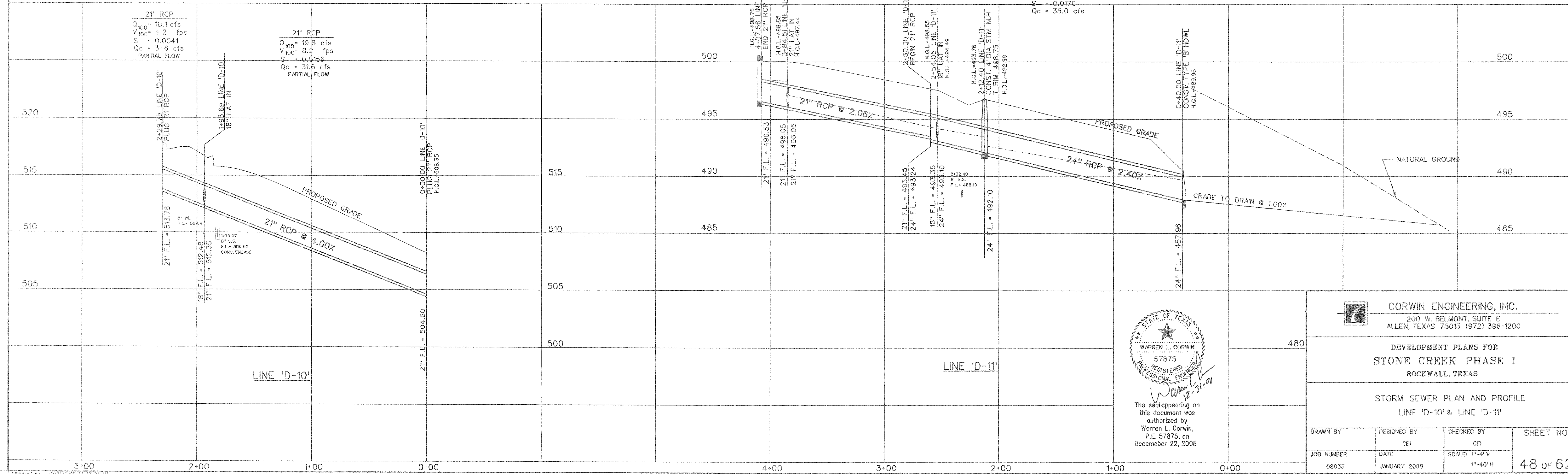
STORM SEWER PLAN AND PROFILE
 LINE 'D-7' & LAT '7'

TO THE BEST OF OUR KNOWLEDGE CORWIN ENGINEERING, INC., HEREBY STATES THAT THIS PLAN IS AS-BUILT, THIS INFORMATION PROVIDED IS BASED ON SURVEYING AT THE SITE AND INFORMATION PROVIDED BY THE CONTRACTORS
AS-BUILT DECEMBER 2008

DRAWN BY	DESIGNED BY	CHECKED BY	SHEET NO.
	CEI	CEI	46 OF 62
JOB NUMBER	DATE	SCALE:	
08033	JANUARY 2008	1"=4' V 1"=40' H	



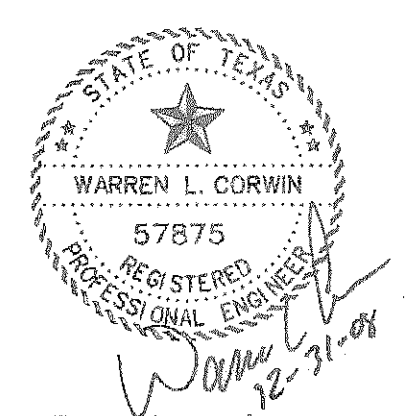
CURVE DATA			
CURVE NO.	①	②	③
Δ	45° 00' 00"	39° 01' 13"	" "
R	65.00'	65.00'	'
T	26.92'	23.03'	'
L	51.05'	44.27'	'



21" RCP
 $Q_{100} = 11.3$ cfs
 $V_{100} = 4.7$ fps
 $S = 0.0051$
 $Q_c = 22.7$ cfs

21" RCP
 $Q_{100} = 24.1$ cfs
 $V_{100} = 10.0$ fps
 $S = 0.0231$
 $Q_c = 22.7$ cfs

24" RCP
 $Q_{100} = 30.0$ cfs
 $V_{100} = 9.5$ fps
 $S = 0.0176$
 $Q_c = 35.0$ cfs



The seal appearing on this document was authorized by Warren L. Corwin, P.E. 57875, on December 22, 2008

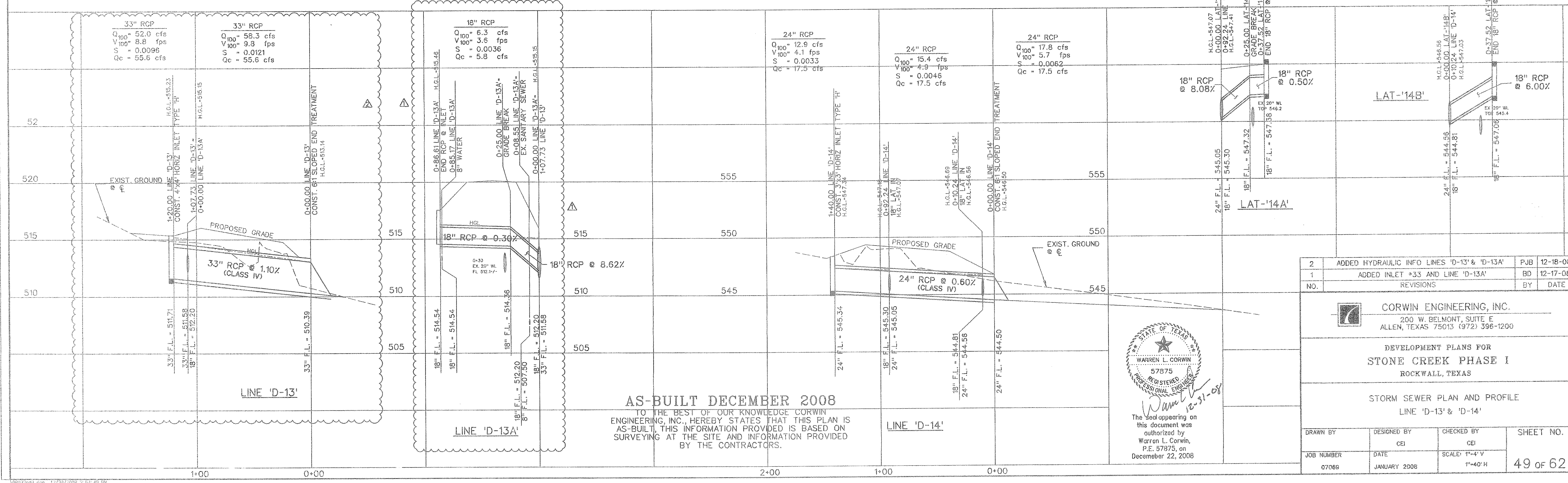
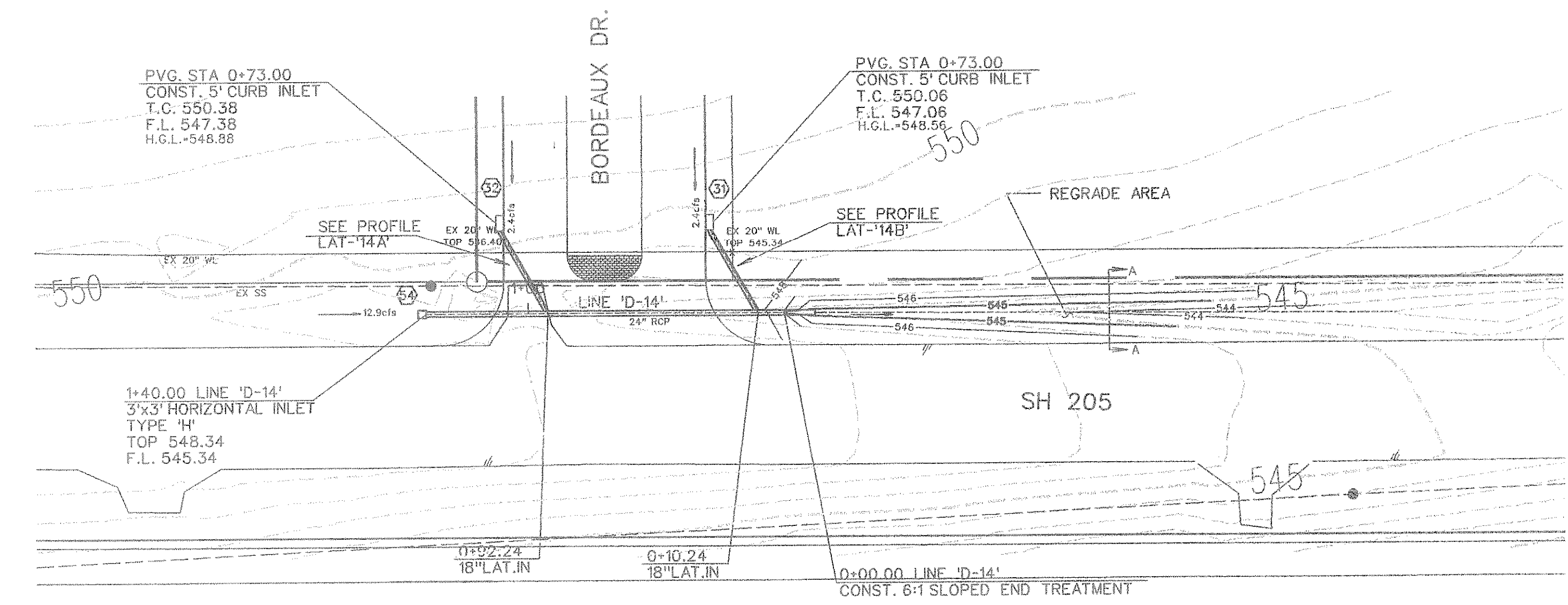
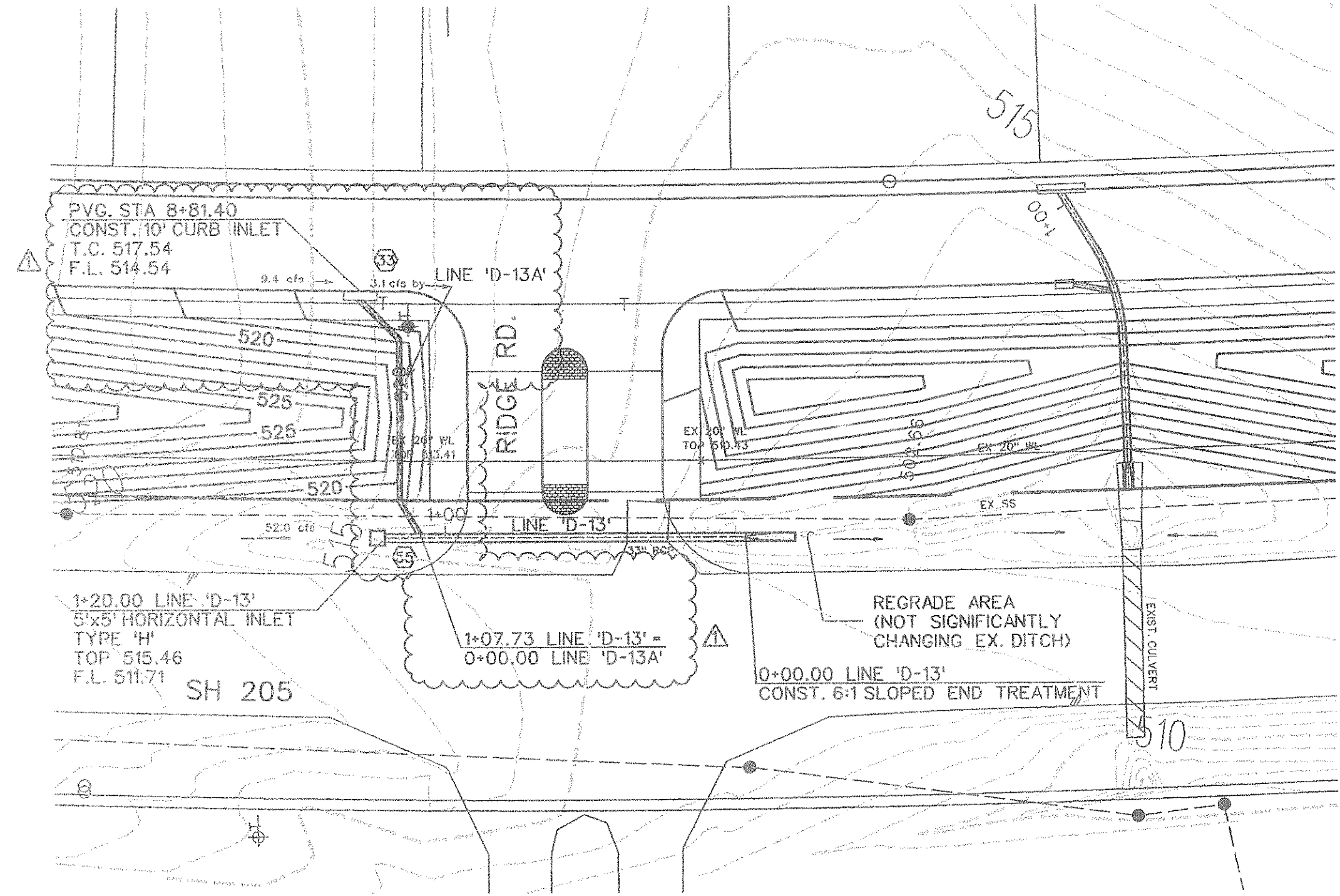
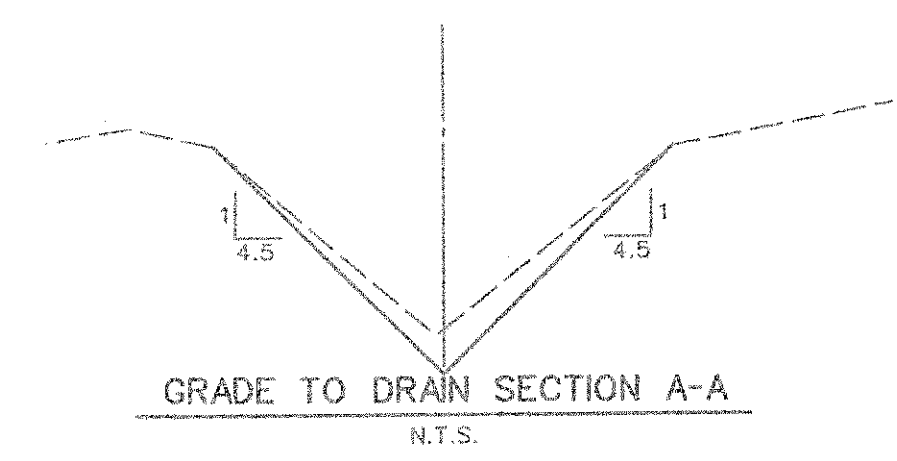
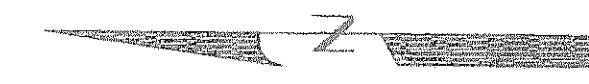
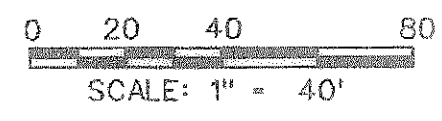
CORWIN ENGINEERING, INC.
 200 W. BELMONT, SUITE E
 ALLEN, TEXAS 75013 (972) 396-1200

DEVELOPMENT PLANS FOR
STONE CREEK PHASE I
 ROCKWALL, TEXAS

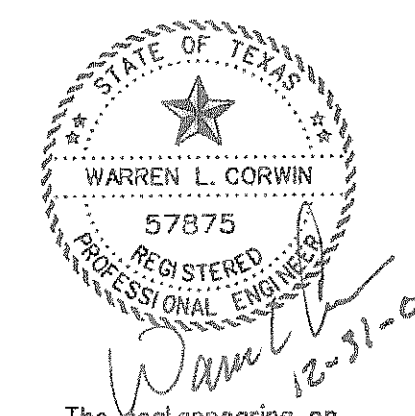
STORM SEWER PLAN AND PROFILE
 LINE 'D-10' & LINE 'D-11'

DRAWN BY	DESIGNED BY	CHECKED BY	SHEET NO.
JOB NUMBER	DATE	SCALE: 1"=4' V	48 OF 62
08033	JANUARY 2008	1"=40' H	

Q₁₀₀ = 17.7 cfs
 S = -0.50%
 V = 2.52 fps
 d = -1.25 ft



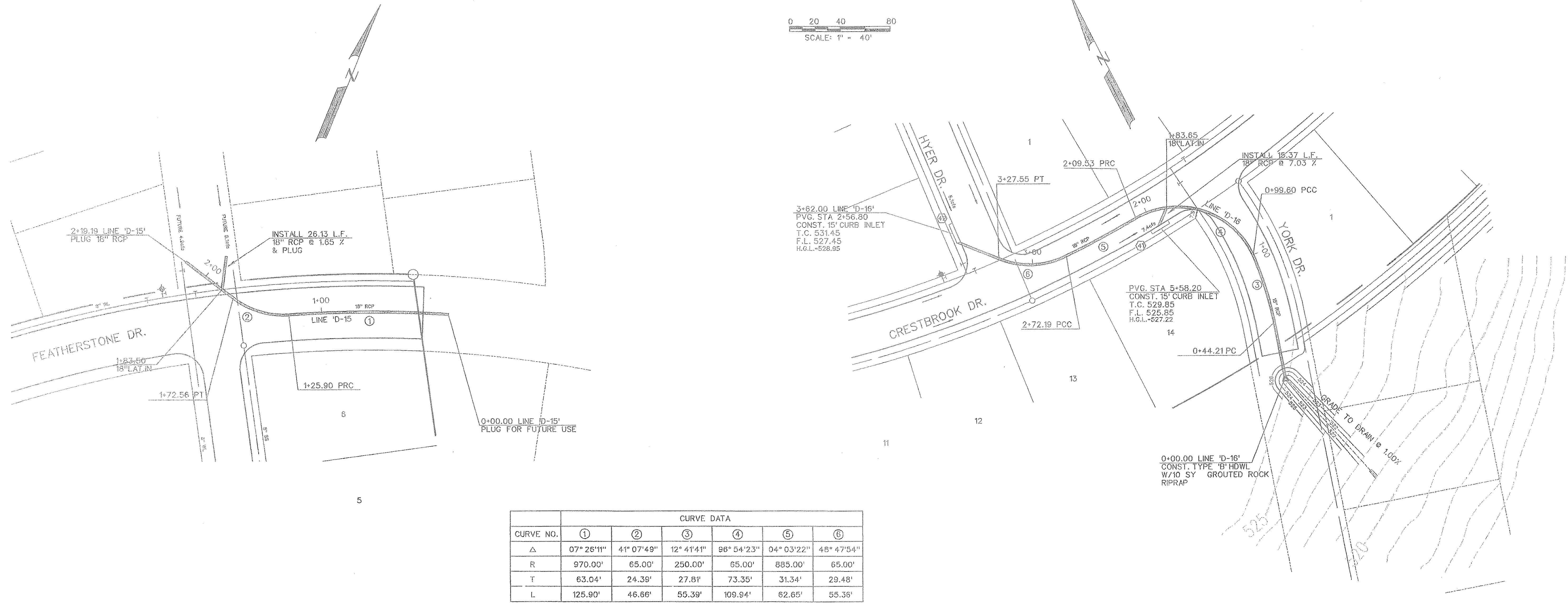
AS-BUILT DECEMBER 2008
 TO THE BEST OF OUR KNOWLEDGE CORWIN ENGINEERING, INC. HEREBY STATES THAT THIS PLAN IS AS-BUILT, THIS INFORMATION PROVIDED IS BASED ON SURVEYING AT THE SITE AND INFORMATION PROVIDED BY THE CONTRACTORS.



The seal appearing on this document was authorized by Warren L. Corwin, P.E. 57875, on December 22, 2008

2	ADDED HYDRAULIC INFO LINES 'D-13' & 'D-13A'	PJB	12-18-08
1	ADDED INLET #33 AND LINE 'D-13A'	BD	12-17-08
NO.	REVISIONS	BY	DATE
 CORWIN ENGINEERING, INC. 200 W. BELMONT, SUITE E ALLEN, TEXAS 75013 (972) 396-1200			
DEVELOPMENT PLANS FOR STONE CREEK PHASE I ROCKWALL, TEXAS			
STORM SEWER PLAN AND PROFILE LINE 'D-13' & 'D-14'			
DRAWN BY	DESIGNED BY	CHECKED BY	SHEET NO.
	CEI	CEI	
JOB NUMBER	DATE	SCALE: 1"=4' V 1"=40' H	49 OF 62
07069	JANUARY 2008		

0 20 40 80
SCALE: 1" = 40'



CURVE NO.	①	②	③	④	⑤	⑥
Δ	07° 26'11"	41° 07'49"	12° 41'41"	96° 54'23"	04° 03'22"	48° 47'54"
R	970.00'	65.00'	250.00'	65.00'	885.00'	65.00'
T	63.04'	24.38'	27.81'	73.35'	31.34'	29.48'
L	125.90'	46.66'	55.39'	109.94'	62.65'	55.36'

