

DRAINAGE AREA CALCULATIONS					
AREA	Time of Conc. (Min.)	Runoff Coeff. "C"	Intensity (in./hr.)	Area (Ac.)	"Q" ₁₀₀ (c.f.s.)
A1	15	0.5	9.0	29.3	131.9
A2	10	0.5	9.8	30.2	148.0

This record drawing is a completion of the sealed engineering drawing for this project, modified by addenda, change orders and information furnished by the contractor. The information shown on the record drawings that was provided by the contractor or others not associated with the design engineer cannot be verified for accuracy or completeness. This original sealed drawing is on file at the offices of Birkhoff, Hendricks & Conway, L.L.P.
 By RVC DATE 4/07/09

BIRKHOFF, HENDRICKS & CONWAY, L.L.P.
 CONSULTING ENGINEERS
 7502 Greenville Ave., Suite 220
 Dallas, Texas
 (214) 361-7900

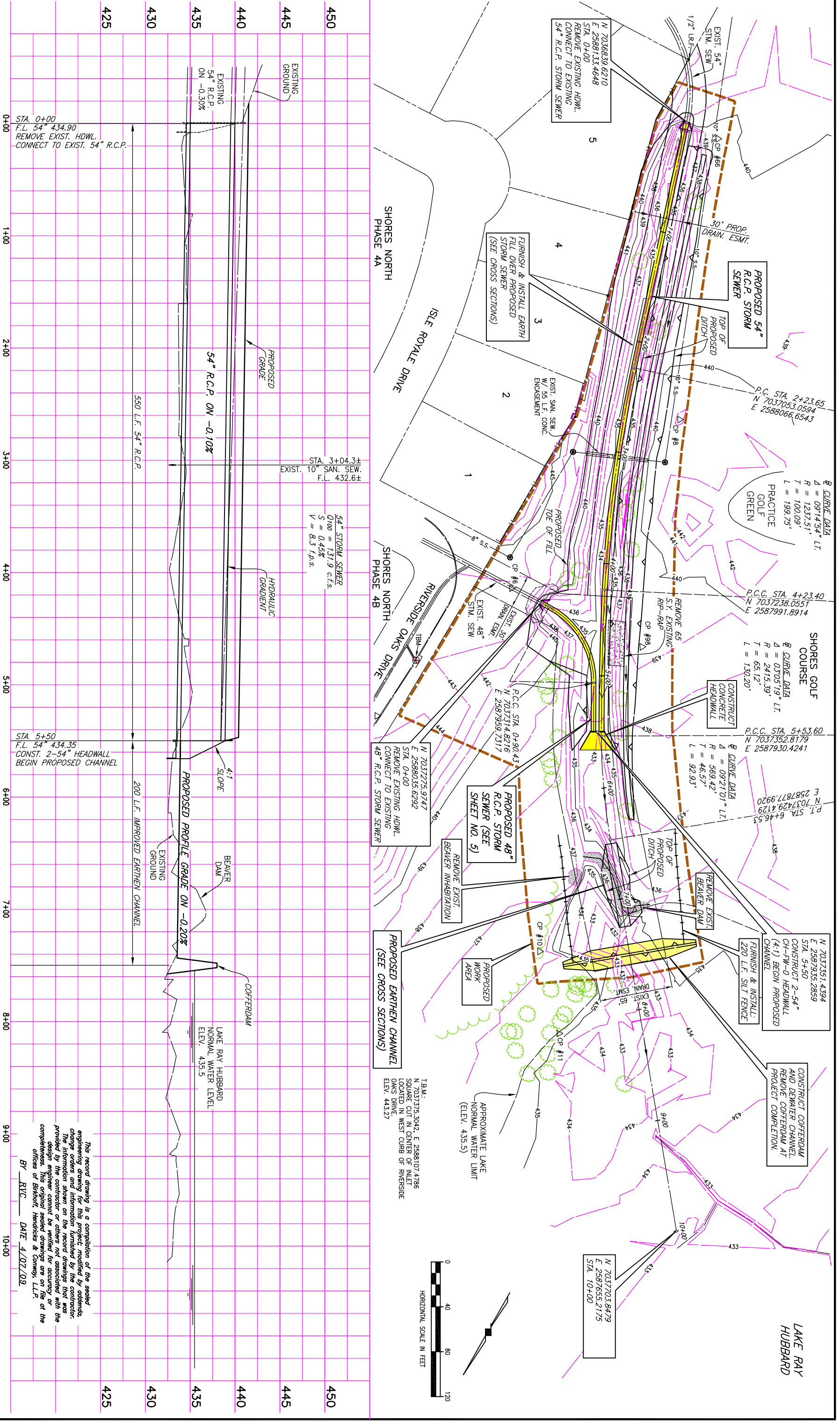
Ronald V. Conway
 37891
 State of Texas
 Professional Engineer

Ronald V. Conway
 1/21/08

CITY OF ROCKWALL, TEXAS
 SHORES NORTH DRAINAGE IMPROVEMENTS
 DRAINAGE AREA MAP

BHC
 PROJECT NO.
 2006-166
 JANUARY 2008

SHEET NO.
3



STA. 0+00
F.L. 54" 434.90
REMOVE EXIST. HDWL.
CONNECT TO EXIST. 54" R.C.P.

STA. 5+50
F.L. 54" 434.35
CONST. 2-54" HEADWALL
BEGIN PROPOSED CHANNEL

This record drawing is a completion of the sealed engineering drawing for this project modified by addenda, change orders and information furnished by the contractor. The information shown on the record drawings that was provided by the contractor or others not associated with the design engineer cannot be verified for accuracy or completeness. This original sealed drawings are on file at the office of Birkhoff, Hendricks & Conway, L.L.P.
BY RYC DATE 4/07/09

BIRKHOFF, HENDRICKS & CONWAY, L.L.P.
CONSULTING ENGINEERS
7502 Greenville Ave., Suite 220
Dallas, Texas
(214) 361-7900

RONALD V CONWAY
REGISTERED PROFESSIONAL ENGINEER
37891
1/21/08

CITY OF ROCKWALL, TEXAS
SHORES NORTH DRAINAGE IMPROVEMENTS
54" STORM SEWER PLAN-PROFILE

BHC PROJECT NO. 2006-186
SHEET NO. 4
JANUARY 2008

REVISED: 4/7/09 - WHAYS

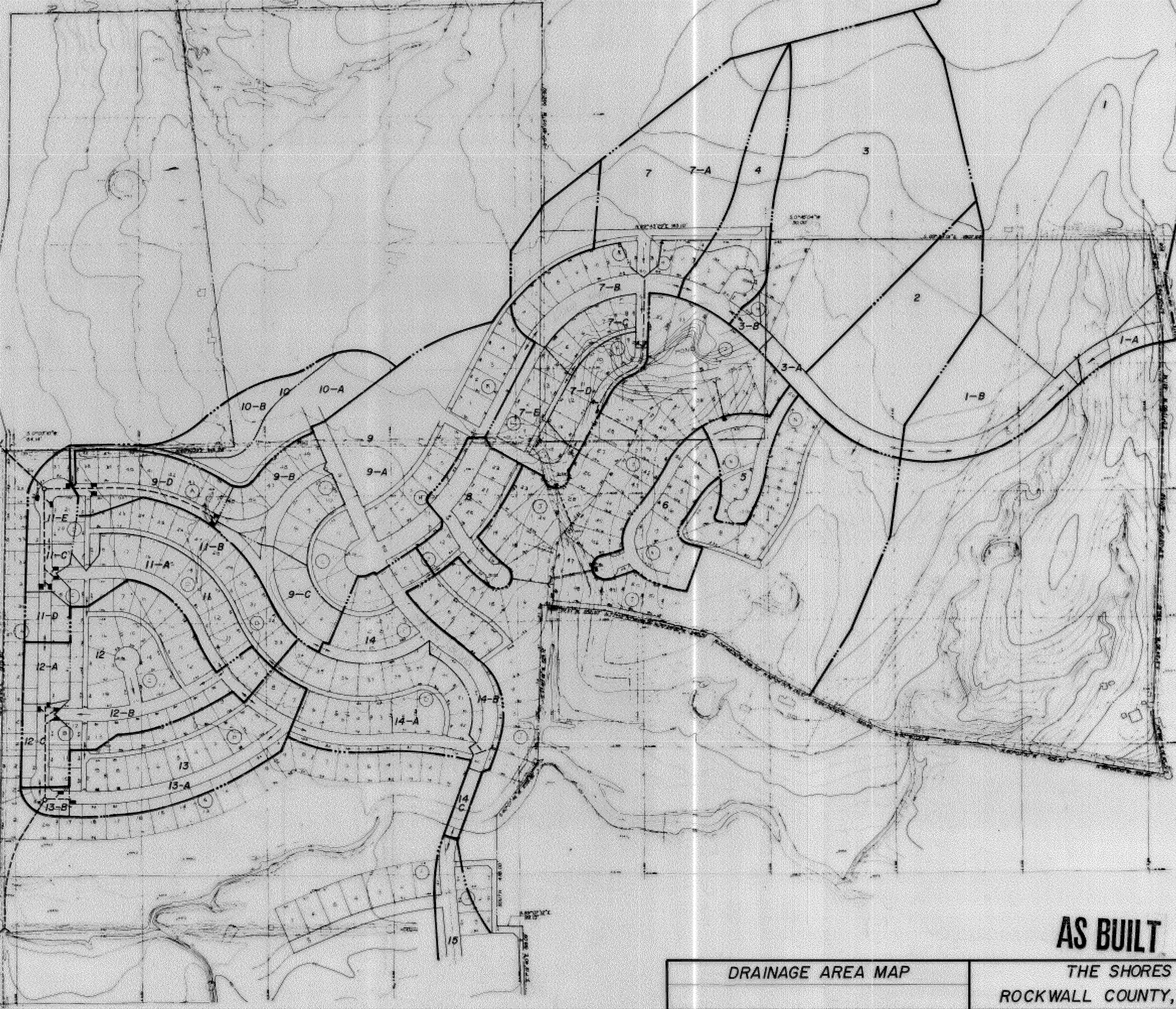
H:\Projects\Rockwall\2006186 Shores North Drainage\Sheets\2006186-pp1.dwg

PLOT SCALE: 1:80

PLOT STYLE: 11x17.ctb

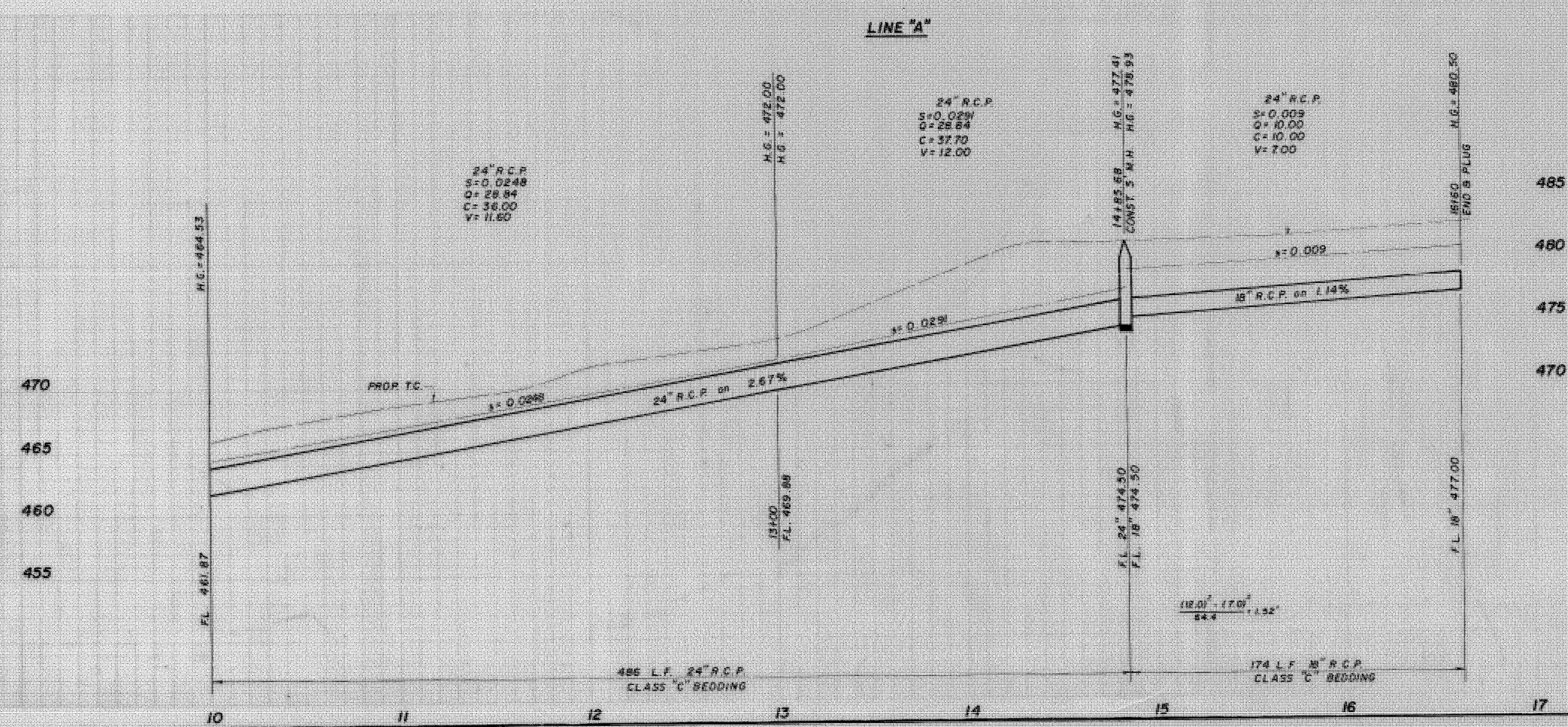
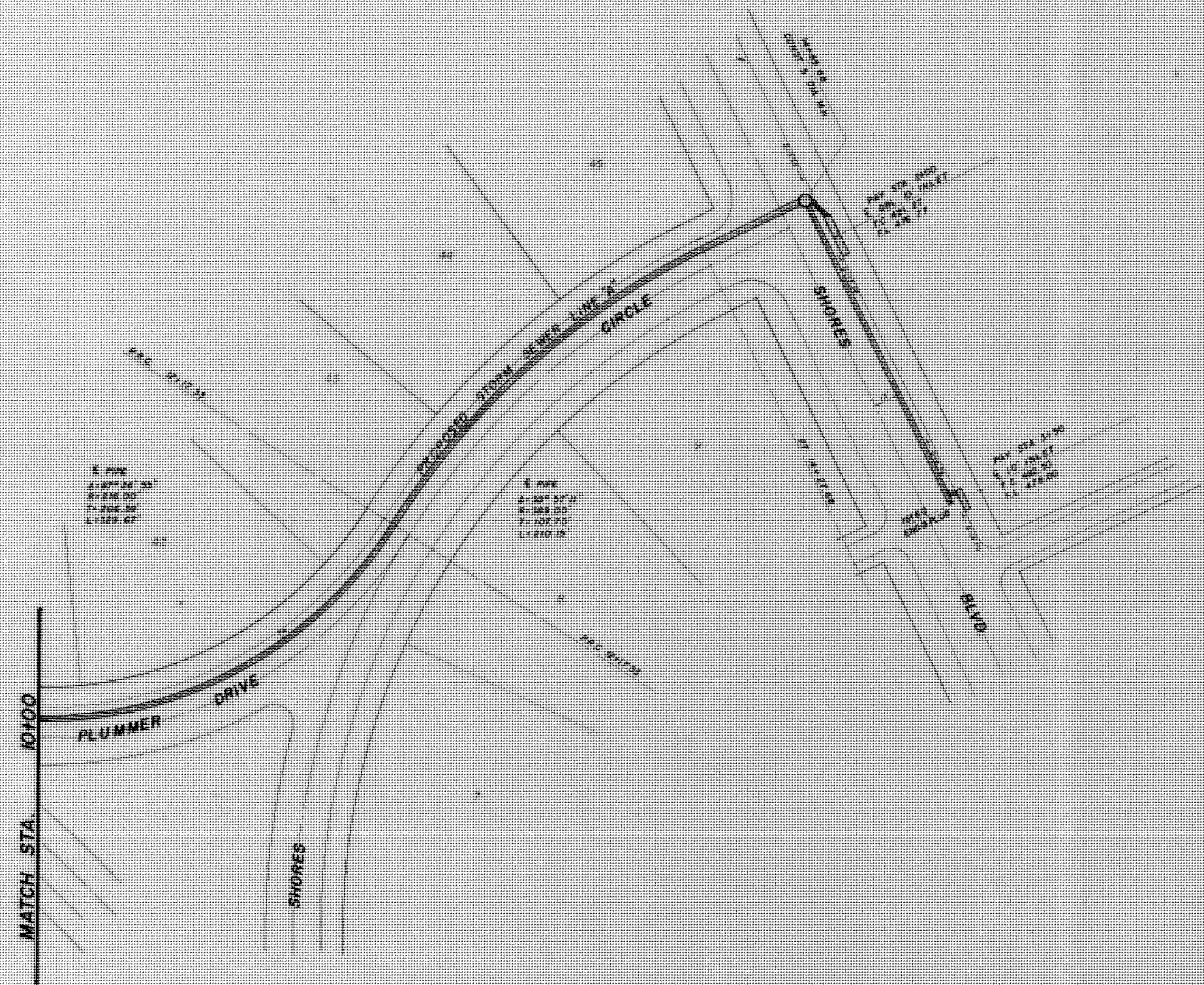
PLOTTED BY: WHAYS ON 4/7/2009

Area	Area	Top of	Bottom of	Volume	Volume	Volume	Volume	Volume	Volume
Code	(Ac)	Structure	(Feet)	(cu ft)	(cu ft)	(cu ft)	(cu ft)	(cu ft)	(cu ft)
1-A	1.25	10	7.2	2.75	7.75	21.25	21.25	21.25	21.25
1-B	2.25	10	7.2	2.75	21.25	21.25	21.25	21.25	21.25
2	7.17	10	7.2	23.2	23.2	23.2	23.2	23.2	23.2
2-A	1.25	10	7.2	4.17	27.87	61	61	61	61
2-B	5.92	10	7.2	19.03	19.03	19.03	19.03	19.03	19.03
3	18.10	10	7.2	58.50	58.50	58.50	58.50	58.50	58.50
4	3.78	10	7.2	13.24	13.24	13.24	13.24	13.24	13.24
5	7.51	10	7.2	27.08	27.08	27.08	27.08	27.08	27.08
5	1.20	10	7.2	10.36	10.36	10.36	10.36	10.36	10.36
7-D	7.24	10	7.2	25.89	25.89	17.60	17.60	17.60	17.60
7-C	3.27	10	7.2	10.32	10.32	34.73	34.73	34.73	34.73
7-D	1.25	10	7.2	4.50	4.50	20.00	20.00	20.00	20.00
7-E	2.87	10	7.2	10.36	10.36	13.86	13.86	13.86	13.86
8	2.48	10	7.2	8.91	8.91	8.91	8.91	8.91	8.91
9-A	8.98	10	7.2	28.64	28.64	28.64	28.64	28.64	28.64
9-B	3.77	10	7.2	13.61	13.61	4.25	4.25	4.25	4.25
9-C	2.43	10	7.2	8.59	8.59	20.00	20.00	20.00	20.00
9-D	2.85	10	7.2	10.32	10.32	26.00	26.00	26.00	26.00
10-A	2.48	10	7.2	8.91	8.91	8.91	8.91	8.91	8.91
10-B	7.89	10	7.2	28.64	28.64	17.42	17.42	17.42	17.42
11-A	4.05	10	7.2	14.57	14.57	14.57	14.57	14.57	14.57
11-B	3.56	10	7.2	12.82	12.82	12.82	12.82	12.82	12.82
11-C	0.89	10	7.2	3.20	3.20	10.36	10.36	10.36	10.36
11-D	0.89	10	7.2	3.20	3.20	11.57	11.57	11.57	11.57
11-E	1.17	10	7.2	4.17	4.17	4.17	4.17	4.17	4.17
12-A	2.42	10	7.2	8.52	8.52	20.00	20.00	20.00	20.00
12-B	1.47	10	7.2	5.28	5.28	25.36	25.36	25.36	25.36
13-A	2.71	10	7.2	9.27	9.27	15.22	15.22	15.22	15.22
13-B	0.25	10	7.2	0.86	0.86	0.86	0.86	0.86	0.86
14-A	1.25	10	7.2	4.50	4.50	10.36	10.36	10.36	10.36
14-B	1.20	10	7.2	4.17	4.17	17.22	17.22	17.22	17.22
14-C	0.56	10	7.2	2.02	2.02	12.74	12.74	12.74	12.74
15	4.17	10	7.2	14.57	14.57	20.00	20.00	20.00	20.00



AS BUILT
THE SHORES
ROCKWALL COUNTY, TEXAS

DRAINAGE AREA MAP				HAROLD L. EVANS CONSULTING ENGINEER	
DESIGN	DRAW	SCALE	DATE	SHEET NO.	TOTAL SHEETS
H. L. E.	Denny D.	1"=200'	10-17-77	13	13



"AS BUILT"

THE SHORES						
PROPOSED STORM SEWER						
HAROLD L. EVANS CONSULTING ENGINEER						
DESIGN	DRAWN	DATE	SCALE	NOTES	FILE	NO.
N.L.E.	Dwney D.	11-27-77	1"=40' H. 1"=6' V.			72-085

