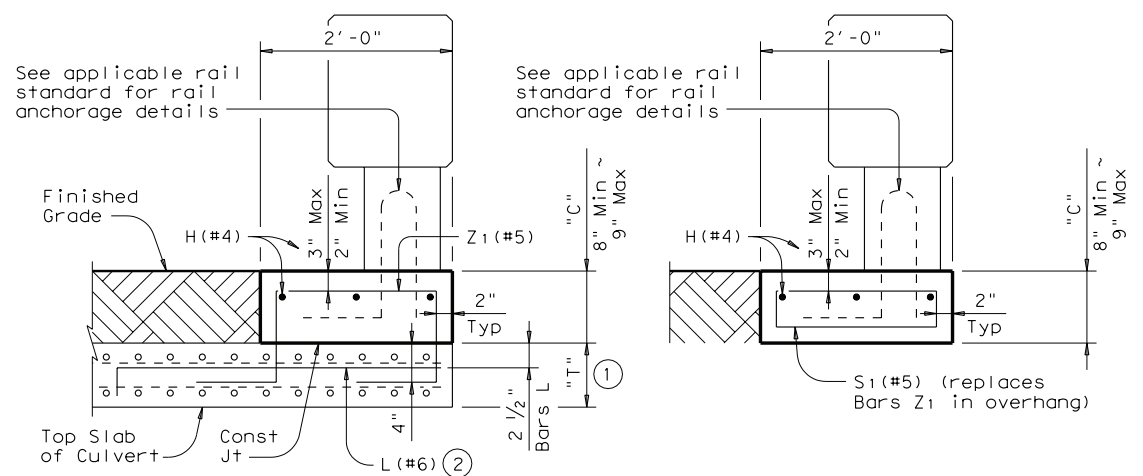


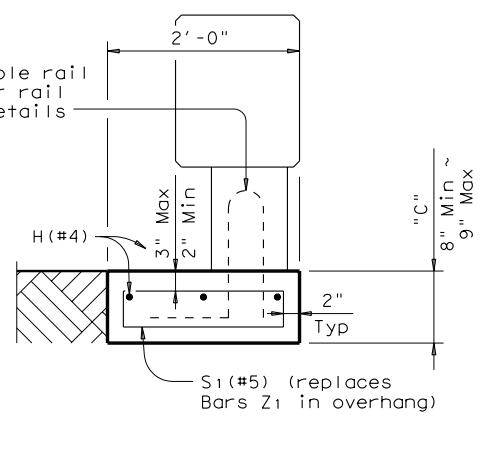
DISCLAIMER: The use of this standard is governed by the "Texas Engineering Practice Act". No warranty of any kind is made by TxDOT for any purpose whatsoever. TxDOT assumes no responsibility for the conversion of this standard to other formats or for incorrect results or damages resulting from its use.

LEVELS DISPLAYED	ACC:
1	



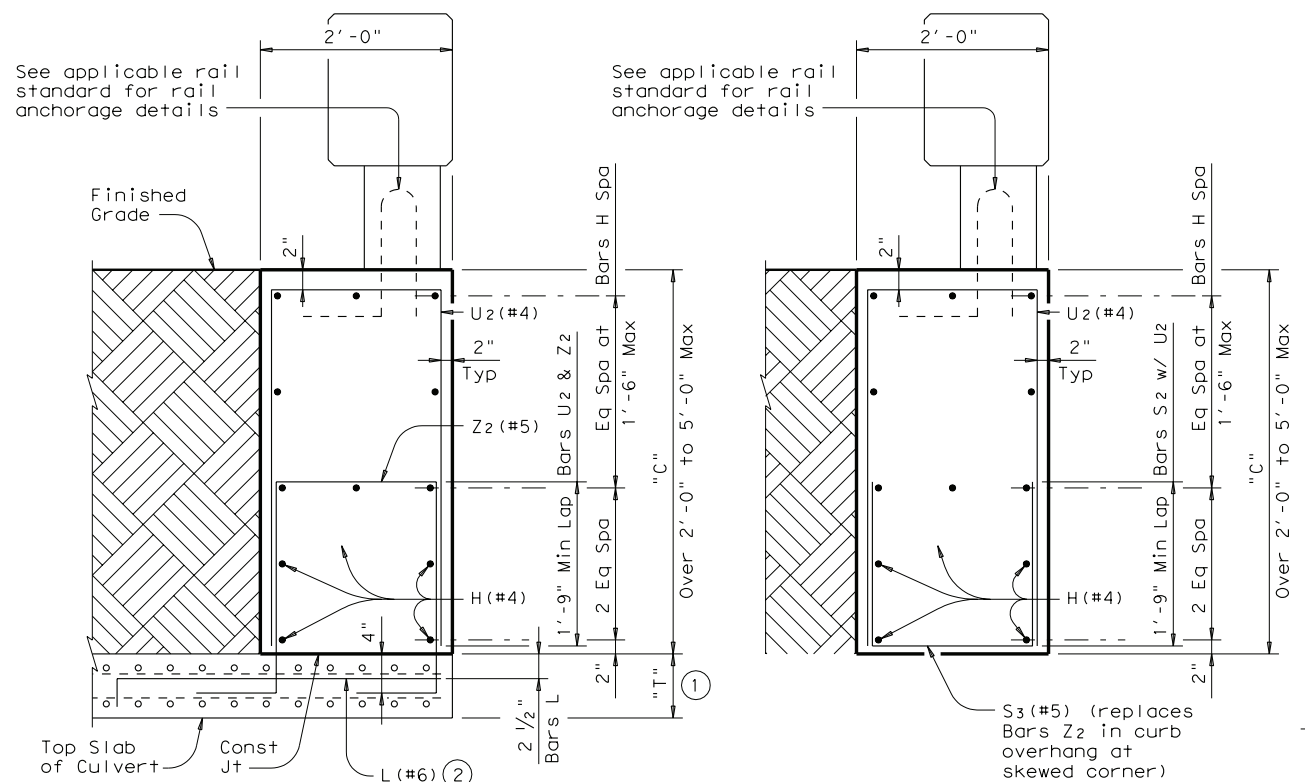
SECTION A-A
TYPE 1 CURB

Used for curbs from 8" to 9" (Showing "C" = 9")
Showing T223 Rail, other rails similar. (Bars L on T223 and C223 Rails are not used for this structure.)



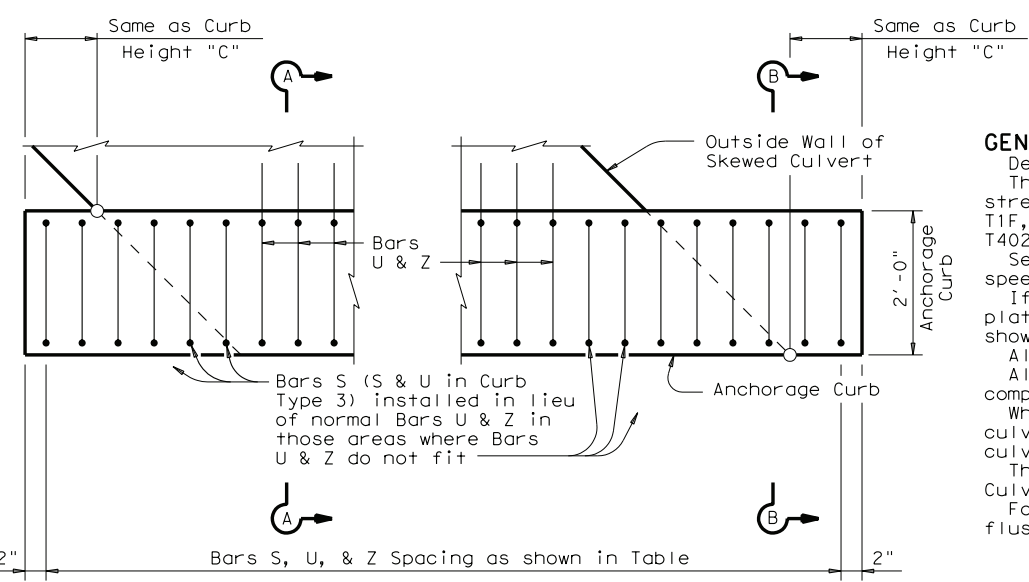
SECTION A-A
TYPE 2 CURB

Used for curbs over 9" to 2'-0" (Showing "C" = 2'-0")
Showing T223 Rail, other rails similar. (Bars L on T223 and C223 Rails are not used for this structure.)



SECTION A-A
TYPE 3 CURB

Used for curbs over 2'-0" to 5'-0" (Showing "C" = 4'-0")
Showing T223 Rail, other rails similar. (Bars L on T223 and C223 Rails are not used for this structure.)



TYPICAL CURB PLAN

Showing typical installation on skewed culvert.
Bar spacing shown is valid for all skews and rails except T101 (see T101 RAIL ANCHORAGE DETAILS).
(Bars L on T223 and C223 Rails are not used for this structure.)

TABLE OF REINFORCING SPACING

Curb Height "C"	Section Type	Bars S, U, & Z Spa
8" to 9"	1	12"
Over 9" to 2'-0"	2	9"
Over 2'-0" to 3'-0"	3	7"
Over 3'-0" to 5'-0"	3	5"

TABLE OF ESTIMATED QUANTITIES ④

Curb Height "C"	Section Type	Reinf Steel (Lb/LF)	Class "C" Concrete (CY/LF)
8"	1	21.2	0.049
9"	1	21.2	0.056
1'-0"	2	29.1	0.074
1'-6"	2	30.0	0.111
2'-0"	2	30.9	0.148
3'-0"	3	42.5	0.222
4'-0"	3	55.8	0.296
5'-0"	3	59.0	0.370

- ① "T" is equal to the culvert top slab thickness. For Precast Boxes with slabs less than 7", see SCP-MD Standard for additional details.
- ② Tilt Bars L hook as necessary to maintain cover.
- ③ Optional Bars L are to be used only for Precast Box Culverts with 3'-0" closure pours.
- ④ Quantities shown are for Contractor's information only. Quantities are per Linear Foot of curb length. The values for each section type in table can be interpolated for intermediate values of Curb Height, "C".

GENERAL NOTES:
Designed according to AASHTO LRFD Specifications.
The rail anchorage curb details have sufficient strength for use with the following rail types: T1F, T1W, T101, C1W, T221, C221, T223, C223, T401, T402, C402, T411, C411, T551, T552 and SSTR.
See appropriate rail standard for approved design speed restrictions, notes and details not shown.
If attaching the T101 rail, note that the anchor plates shown on this sheet replace the anchor plates shown on the T101 standard.
All reinforcing steel must be Grade 60.
All concrete must be Class "C" with a minimum compressive strength of 3,600 psi.
When using this anchorage curb, omit normal culvert curb reinforcing bars K and H shown on the culvert standard sheets.
This anchorage curb is considered part of the Box Culvert for payment.
For vehicle safety, the top of the curb must be flush with the finished grade.

SPECIAL NOTE:
These details are for use with curbs that are 8" to 5'-0" tall only. Curb heights that are less than or greater than those shown will require special design.

SHEET 1 OF 2

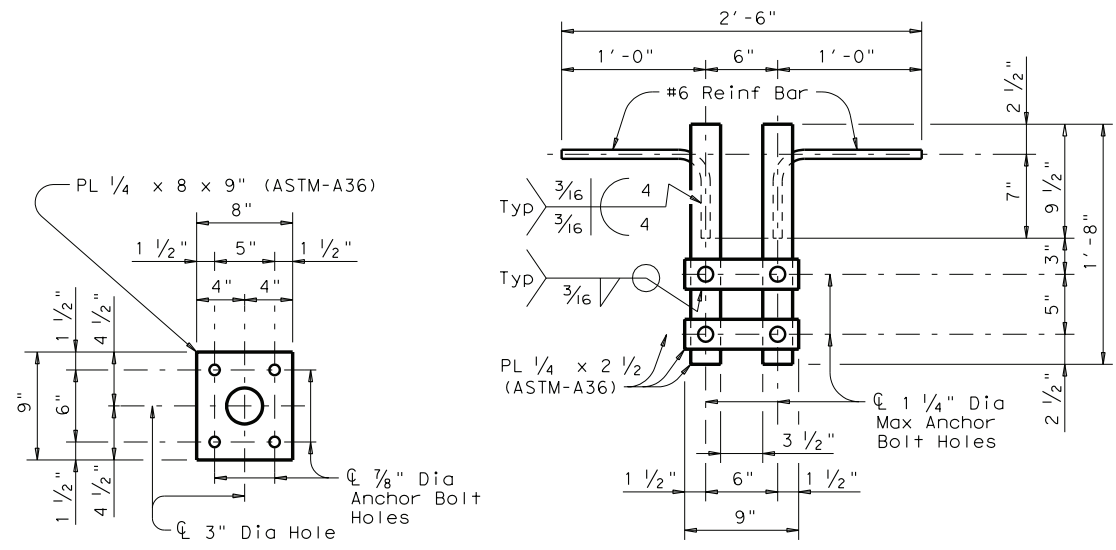
Texas Department of Transportation
Bridge Division

**RAIL ANCHORAGE CURB
BOX CULVERT
RAIL MOUNTING DETAILS
(CURBS 8" TO 5'-0" TALL ONLY)**

RAC

FILE: racste01.dgn	DN: GAF	CK: TxDOT	DW: TxDOT	CK: GAF
© TxDOT May 2005	DISTRICT	FEDERAL AID PROJECT		SHEET
REVISIONS				
04-09: Updated for new rails.	COUNTY	CONTROL	SECT	JOB HIGHWAY

DISCLAIMER: The use of this standard is governed by the "Texas Engineering Practice Act". No warranty of any kind is made by TxDOT for any purpose whatsoever. TxDOT assumes no responsibility for the conversion of this standard to other formats or for incorrect results or damages resulting from its use.

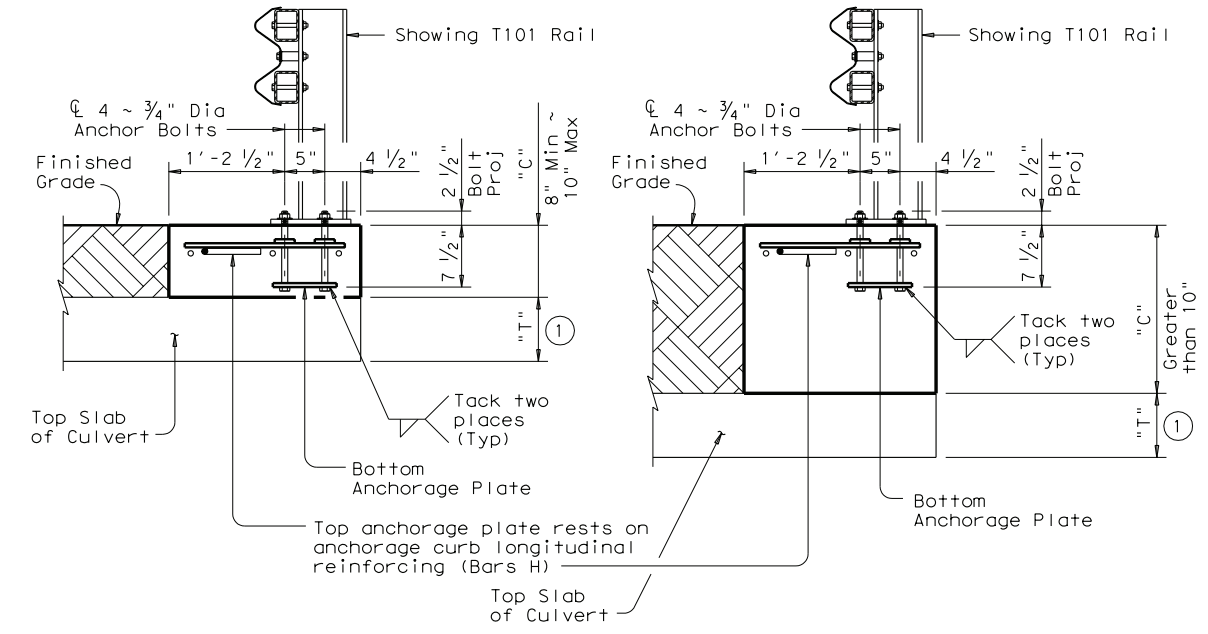


BOTTOM ANCHORAGE PLATE

TOP ANCHORAGE PLATE

Showing top plan view

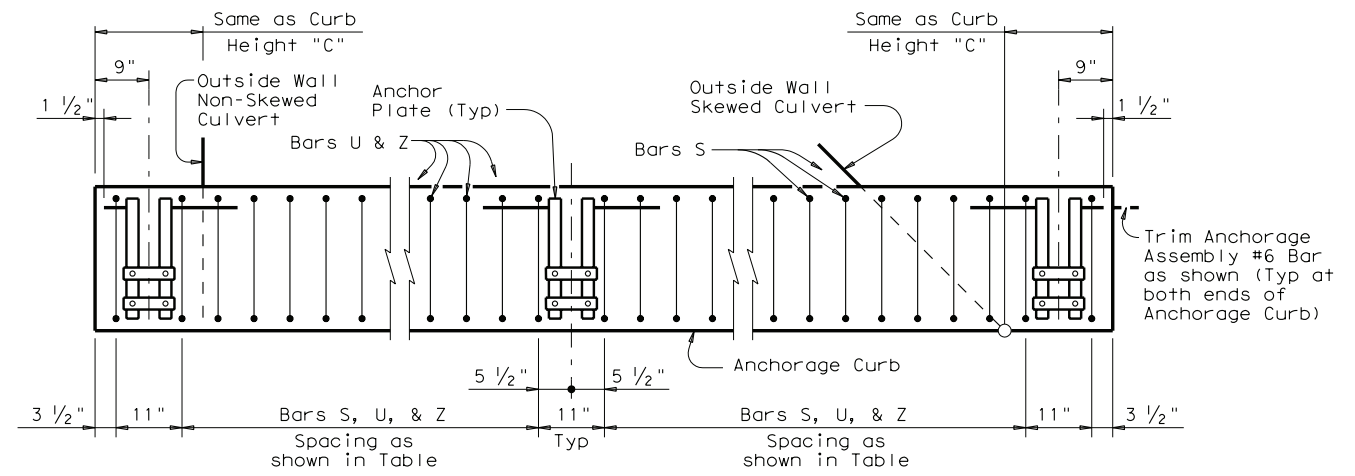
T101 RAIL ANCHOR PLATE DETAILS ⑥



TYPICAL SECTION THRU CURBS 10" OR LESS

TYPICAL SECTION THRU CURBS GREATER THAN 10"

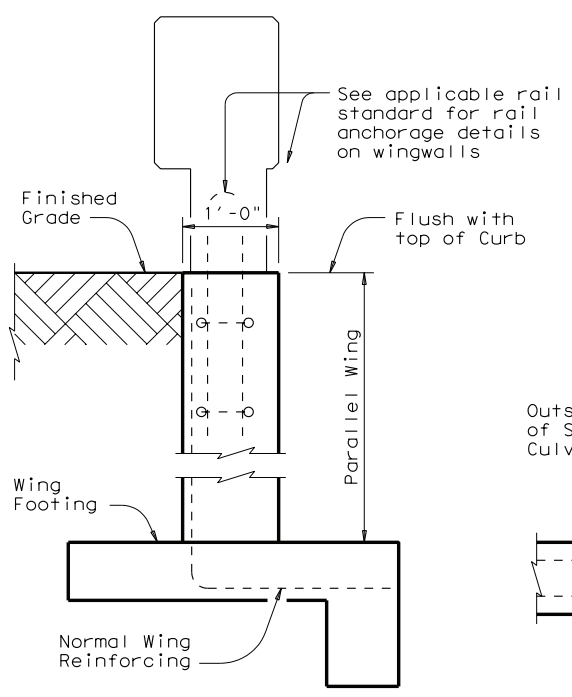
Reinforcing not shown for clarity



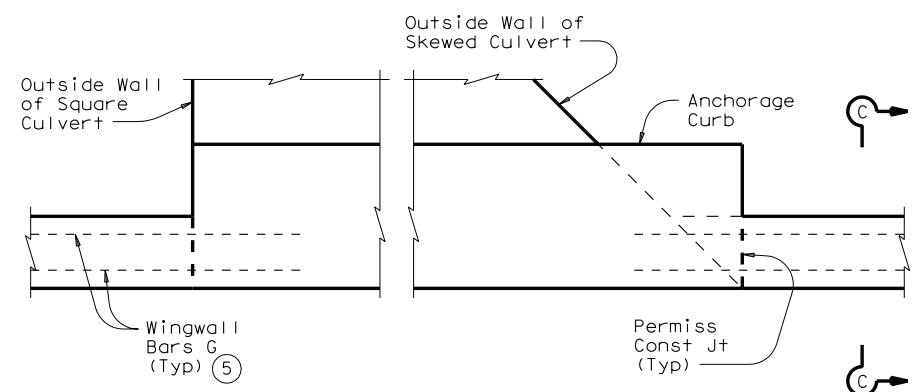
ANCHOR PLATE INSTALLATION PLAN

Also showing placement of bars S, U, and Z in Anchorage Curb. Bar spacing shown is valid for all skews.

T101 RAIL ANCHORAGE DETAILS



SECTION C-C



TYPICAL CURB PLAN

Curb reinforcing and footings not shown for clarity

INSTALLATION AT PARALLEL CULVERT WINGWALLS

See culvert wingwall standard for bars and details not shown.

**RAIL ANCHORAGE CURB
BOX CULVERT
RAIL MOUNTING DETAILS
(CURBS 8" TO 5'-0" TALL ONLY)**

RAC

FILE: racste01.dgn	DN: GAF	CK: TxDOT	DW: TxDOT	CK: GAF
© TxDOT May 2005	DISTRICT	FEDERAL AID PROJECT		SHEET
REVISIONS				
04-09: Updated for new rails.	COUNTY	CONTROL	SECT	JOB HIGHWAY

LEVELS DISPLAYED

1	ACC:
---	------