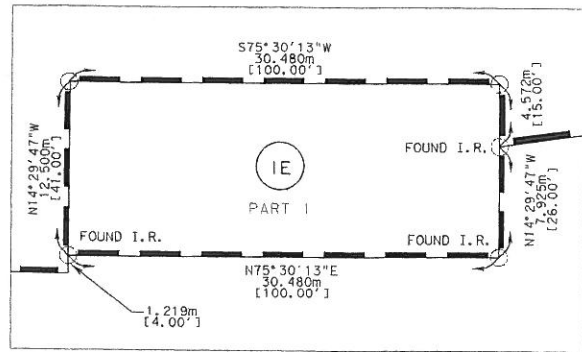


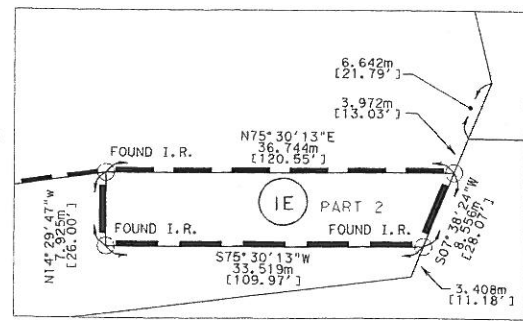
D:\BHP1\USR2\0184512\SH66\SH66.SHEET3.DGN

JOSIAH HART SURVEY ABSTRACT NUMBER 111



DETAILED 1E PART 1
N. T. S.

E. R. FOSTER SURVEY ABSTRACT NUMBER 81



DETAILED 1E PART 2
N. T. S.

BLUEBONNET SAVINGS BANK, FSB
DEED
VOL. PG.
2,776.88 sq. m
[29,890 S.F.]

REM. = 23,298.69 sq. m
[250,784 S.F.]

BLUEBONNET SAVINGS BANK, FSB
EASEMENT
VOL. PG.
PART 1 = 380.90 sq. m [4100 S.F.]
PART 2 = 278.43 sq. m [2997 S.F.]
TOTAL = 659.33 sq. m [7097 S.F.]

M. E. HARKINS SURVEY ABSTRACT NUMBER 101

BENJAMIN F. BOYDSTUN SURVEY ABSTRACT NUMBER 17

LAKE RAY HUBBARD

FEDERAL DEPOSIT INSURANCE CORPORATION
EASEMENT
VOL. PG.
638.25 sq. m
[6,870 S.F.]

BENJAMIN F. BOYDSTUN SURVEY ABSTRACT NUMBER 17

THOMAS S. SUDELA,
DAVID P. GRANGER, &
TEXAS HERITAGE SAVINGS BANK
EASEMENT
VOL. PG.
332.41 sq. m
[3,578 S.F.]

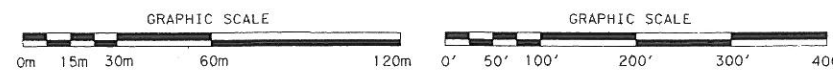
EASTERN PLACE ASSOCIATION
EASEMENT
VOL. PG.
281.87 sq. m
[3,034 S.F.]

LAKE RAY HUBBARD

WILLIAM G. DEWEESE SURVEY ABSTRACT NUMBER 70

JOSIAH HART SURVEY ABSTRACT NUMBER 111

CURVE NO.	RADIUS	ARC LENGTH	CHORD BEARING	CHORD DISTANCE
C1	1527.700m [5012.13']	270.111m [886.19']	N65°17'07"E	269.761m [885.04']
C2	1144.441m [3754.72']	240.344m [788.53']	N66°07'36"E	239.906m [787.09']
C3	1184.065m [3884.72']	28.069m [92.09']	S74°46'46"W	28.069m [92.09']
C4	1144.441m [3754.72']	45.735m [150.05']	N74°18'48"E	45.732m [150.04']



REVISED 8/04/98
REVISED 6/15/98

FEED NO.	STATE	FEDERAL AID PROJECT NO.	HIGHWAY NO.
6	TEXAS		SH 66
PLAN CORRECT NO.	COUNTY	FOUNDER NO.	SECTION NO.
18	ROCKWALL	0009	04
			SHEET NO.
			3

D:\BHP1\USR2\0184512\SH66\SH66.SHEET3.DGN