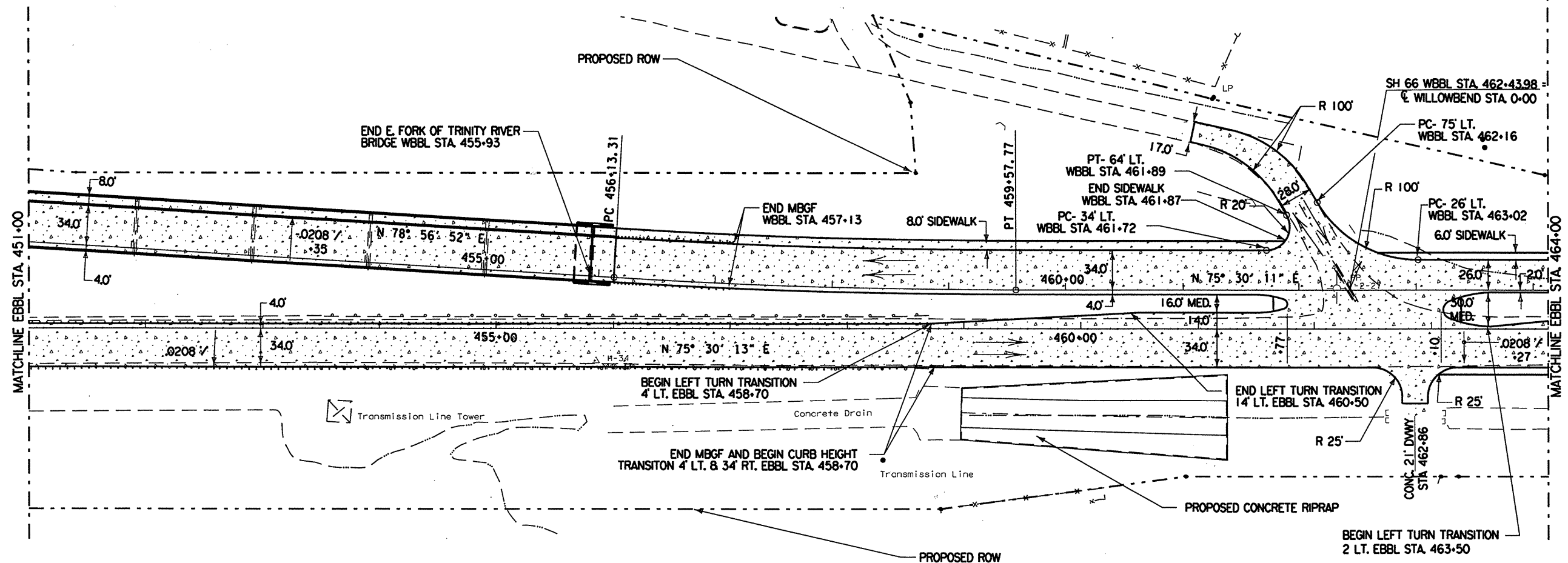


NOTE: SEE MISC PAVING DETAILS FOR MEDIAN NOSE & TURN BAYS.

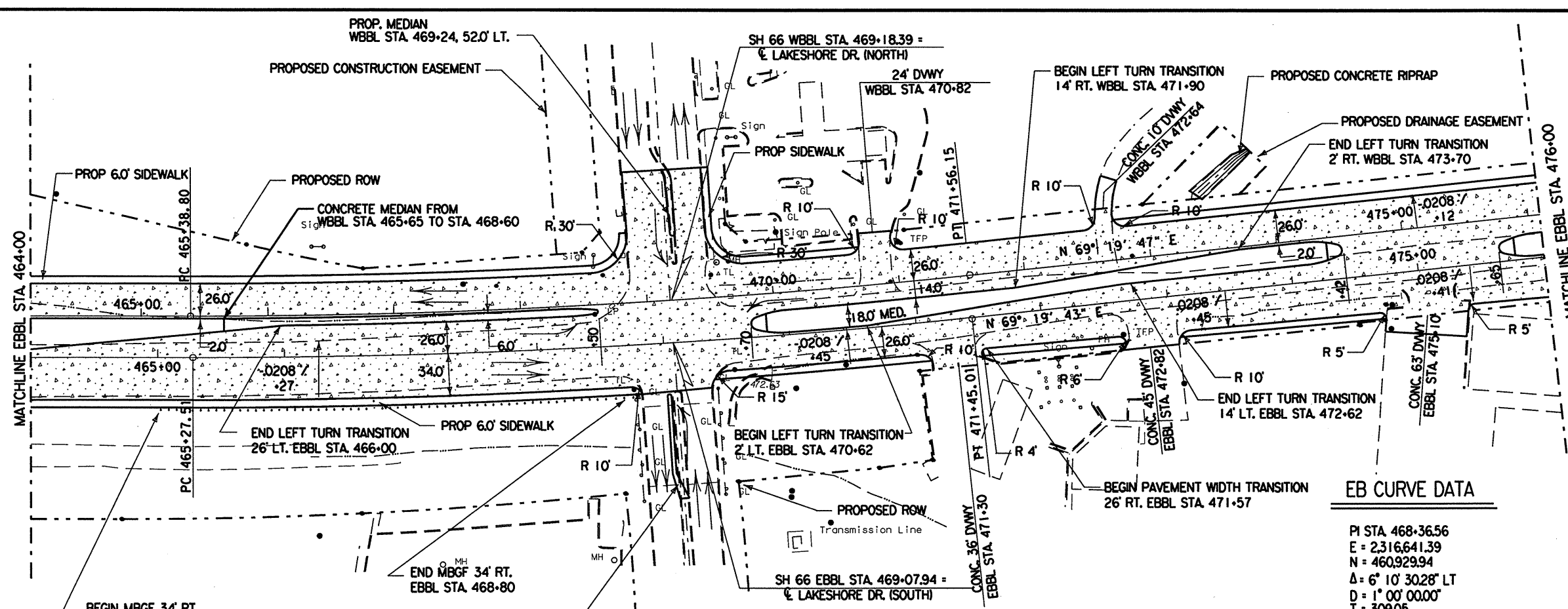


WB CURVE DATA

PI STA 457+85.59
 E = 2315602.70
 N = 460696.52
 $\Delta = 3^\circ 26' 40.65''$ LT
 D = 1" 00' 00.00"
 T = 172.28
 L = 344.46
 R = 5729.58

Minh Tran

STATE OF TEXAS
 MINH TRAN
 84840
 LICENSED PROFESSIONAL ENGINEER
 5/4/99



WB CURVE DATA

PI STA 468+47.78
 E = 2316631.17
 N = 460962.44
 $\Delta = 6^\circ 10' 24.42''$ LT
 D = 1" 00' 00.00"
 T = 308.97
 L = 617.35
 R = 5729.58

EB CURVE DATA

PI STA 468+36.56
 E = 2316641.39
 N = 460929.94
 $\Delta = 6^\circ 10' 30.28''$ LT
 D = 1" 00' 00.00"
 T = 309.05
 L = 617.51
 R = 5729.58

PROPOSED CONCRETE PAVEMENT

© 1999 Texas Department of Transportation

PAVING PLAN
 STA 451+00 TO STA. 476+00

SCALE: 1"=100' HORZ.
 SHEET 7 OF 8 SHEETS

FED. RD. DIV. NO.	FEDERAL AID PROJECT NO.	SHEET NO.
6	NH 99(367)	93
STATE	DIST.	COUNTY
TEXAS	18	ROCKWALL
CONT.	SECT.	JOB HIGHWAY NO.
0009	04	039 SH 66

Revised 6-28-99 DLP