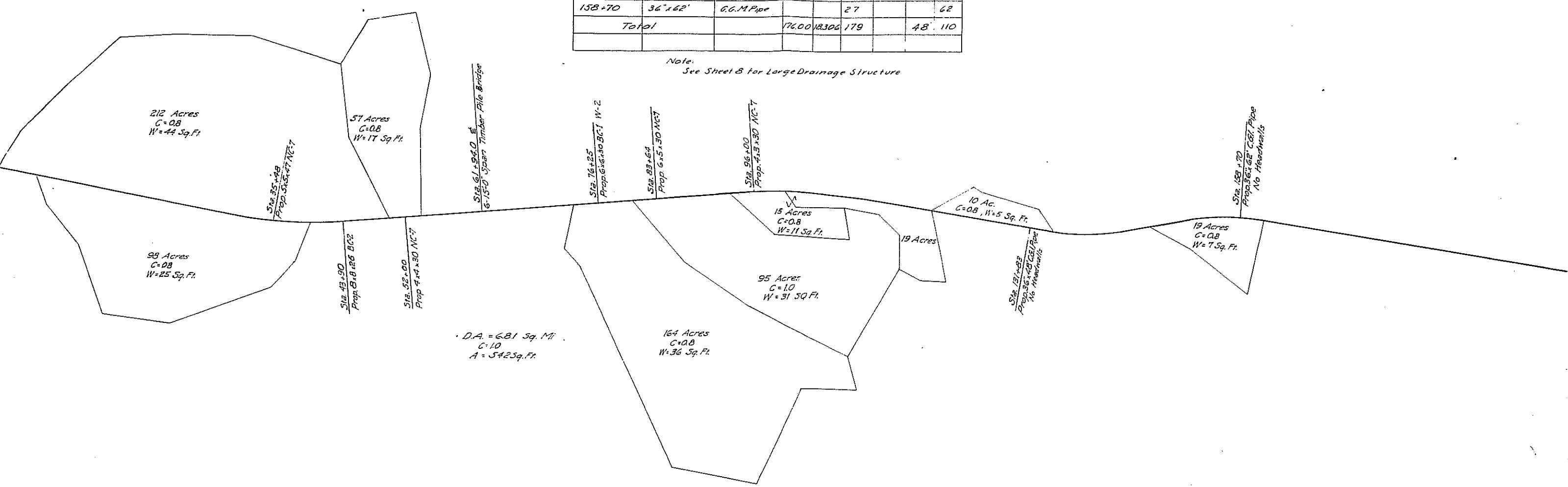




SUMMARY OF SMALL DRAINAGE STRUCTURES

Station	Size	Design	Class Conc. Cu.Yds	Reinf Steel Lbs	Uncl.Stn Exc. Cu.Yds	Con Chan.In Cu.Yds	18"CGM Pipe Lin Ft.	36"CGM Pipe Lin Ft.
35+48	5'x5'x47'	NC-7	32.73	3244	21			
43+90	8'x8'x26'	BC-2.W-2	49.04	5616	35			
52+00	4'x4'x30'	NC-1	16.31	1545	16			
76+25	6'x6'x30'	BC-1.W-2	34.77	4175	24			
83+64	6'x5'x30'	NC-7	29.84	2550	4			
96+00	4'x3'x30'	NC-7	13.31	1176	14			
127+60 Lt	18"x24"	CGM Pipe			7		24'	
127+65 Rt	18"x24"	CGM Pipe			7		24'	
131+82	36"x48"	CGM Pipe			24			48'
158+70	36"x62"	CGM Pipe			27			62'
Total			176.00	18306	179		48'	110

Note:  
See Sheet B for Large Drainage Structure



DRAINAGE AREAS

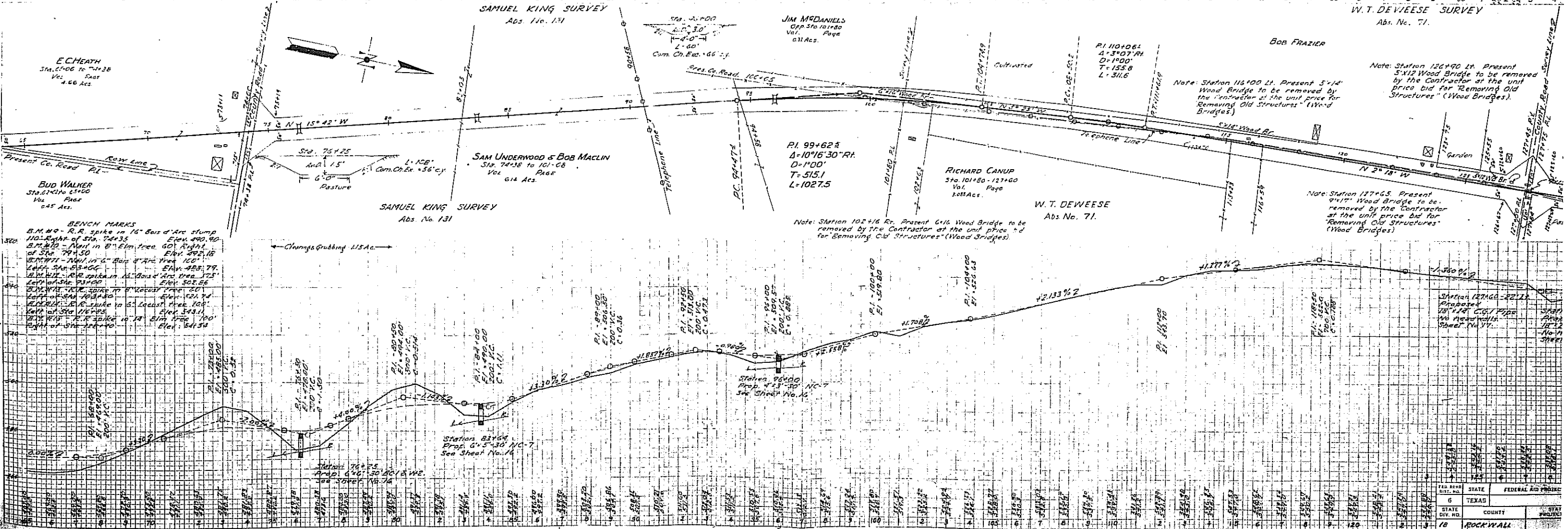
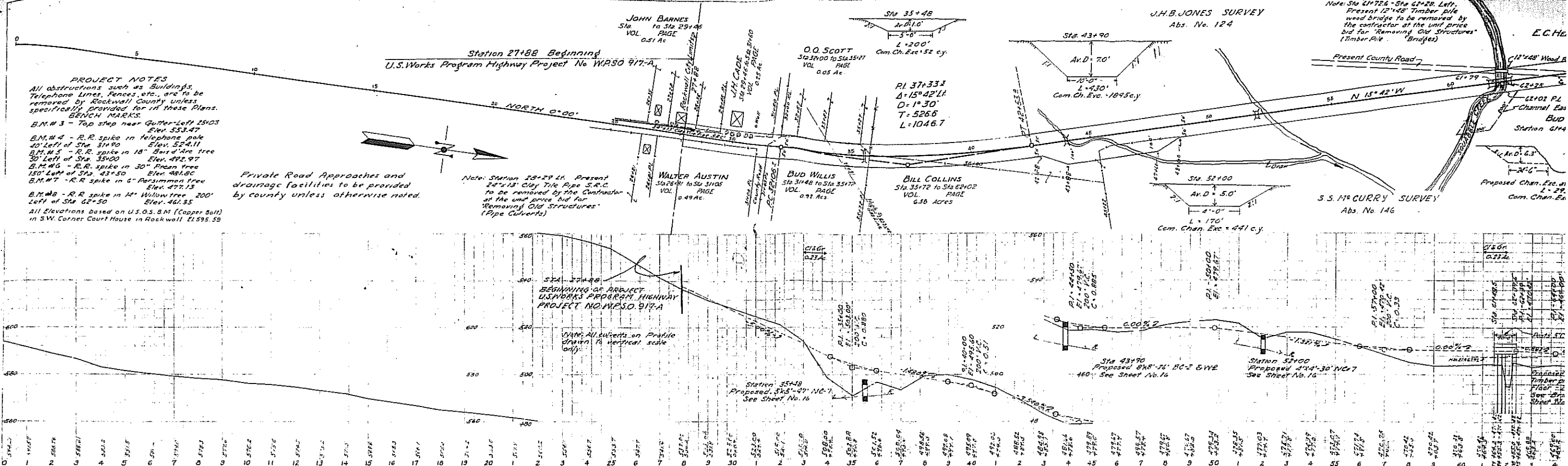
**PROJECT NOTES**  
 All obstructions such as Buildings, Telephone Lines, Fences, etc., are to be removed by Rockwall County unless specifically provided for in these Plans.  
**BENCH MARKS**  
 B.M.# 3 - Top step near Gutter-Left 25103 Elev. 533.47  
 B.M.# 4 - R.R. spike in telephone pole 40' Left of Sta. 31+90 Elev. 524.11  
 B.M.# 5 - R.R. spike in 18" Bar & Tree 30' Left of Sta. 35+00 Elev. 492.97  
 B.M.# 6 - R.R. spike in 30" Pecan tree 150' Left of Sta. 43+50 Elev. 481.80  
 B.M.# 7 - R.R. spike in 6" Persimmon tree Elev. 477.13  
 B.M.# 8 - R.R. spike in 14" Willow tree 200' Left of Sta. 62+50 Elev. 461.35  
 All Elevations based on U.S.G.S. B.M. (Cooper Bolt) in SW Corner Court House in Rockwall El. 595.39

Private Road Approaches and drainage facilities to be provided by county unless otherwise noted.

Station 27+88 Beginning  
 U.S. Works Program Highway Project No. WRSO 917-A

Note: Station 28+29 Lt. Present 24" x 13" Clay Tile Pipe S.A.C. to be removed by the Contractor at the unit price bid for "Removing Old Structures" (Pipe Culverts)

Note: Sta. 21+72.6 - Sta. 62+28. Left. Present 12" x 18" Timber pile wood bridge to be removed by the contractor at the unit price bid for "Removing Old Structures" (Timber Pile Bridges)



**BENCH MARKS**  
 B.M.# 9 - R.R. spike in 16" Bar & Arc Slump 110' Right of Sta. 74+35 Elev. 490.80  
 B.M.# 10 - Nail in 8" Elm tree 60' Right of Sta. 74+50 Elev. 522.18  
 B.M.# 11 - Nail in 6" Bar & Arc tree 100' Left of Sta. 83+00 Elev. 483.79  
 B.M.# 12 - R.R. spike in 12" Bar & Arc tree 175' Left of Sta. 93+00 Elev. 502.86  
 B.M.# 13 - R.R. spike in 8" Pecan tree 200' Left of Sta. 101+80 Elev. 481.74  
 B.M.# 14 - R.R. spike in 6" Locust tree 100' Left of Sta. 116+00 Elev. 543.11  
 B.M.# 15 - R.R. spike in 18" Elm tree 100' Right of Sta. 123+60 Elev. 541.54

FED. ROAD DIST. NO.	STATE	FEDERAL AID PROJECT
6	TEXAS	
STATE DIV. NO.	COUNTY	STATE PROJECT
18	ROCKWALL	

I. R. BAILEY SURVEY  
Abs. No. 30

BOB FRAZIER

PI. 139+13.2  
Δ = 20° 14' Lt.  
D = 2° 00'  
T = 511.2'  
L = 1011.6'

Note: Station 156+70 Left. Present 36" C.G.I. Pipe Culvert to be removed by the Contractor at the unit price bid for "Removing Old Structures" (Pipe Culverts)

JOHN OAR  
Station 151+00 to Sta 151+111  
Vol. Page  
1.18 Acres

JOSEPH STRICKLAND SURVEY  
Abs. No. 187

PI. 156+68.5  
Δ = 19° 36' Rt.  
D = 2° 00'  
T = 503.5'  
L = 996.7'

Mrs. A. W. HANCOCK  
Sta. 151+87.1 to Sta. 151+145  
PAGE  
VOL. 7.37 Acres

T. R. BAILEY SURVEY  
Abs. No. 30

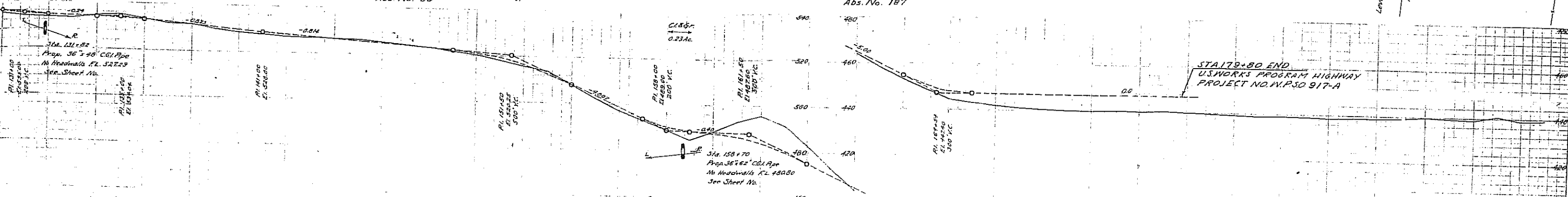
JOSEPH STRICKLAND SURVEY  
Abs. No. 187

Station 179+80 End  
U.S. Works Program Highway  
Project No. W.P.S.O. 917-A

Station 179+80 End  
U.S. Works Program Highway  
Project No. W.P.S.O. 917-A

Station 131+83  
not to be removed  
The Contractor  
at the unit price  
for "Removing  
Structures" (Pipe  
nets)

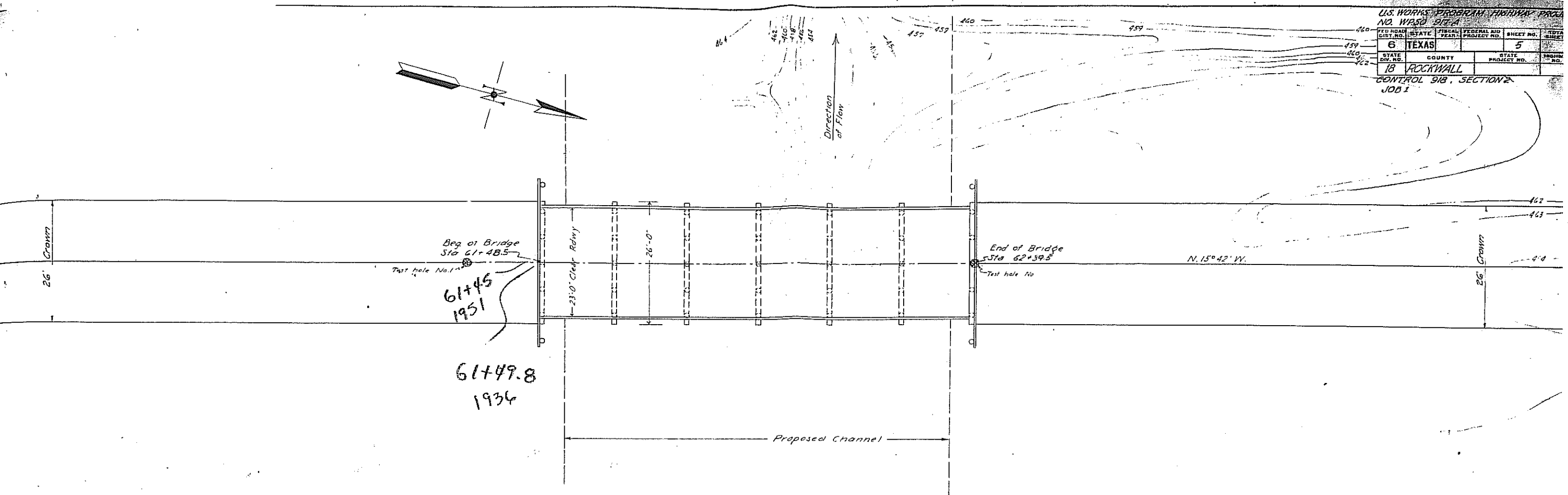
BOB FRAZIER  
Sta. 101+80 to Sta. 152+87.1  
Vol. Page  
9.22 Acres



**PROJECT NOTES**  
All obstructions such as Telephone Lines, Buildings, Fences, etc., are to be removed by the Contractor unless specifically provided in these Plans.

**BENCH MARKS**  
M. #16 - R.R. spike on N.E. Chimney corner 65' ft. of Sta. 141+85 Elev. 529.20  
M. #17 - R.R. spike in 12" Sycamore tree 125' ft. of Sta. 135+50 Elev. 494.63  
M. #18 - R.R. spike in 10" Dotted Arc stump 60' ft. of Sta. 163+21 Elev. 493.16  
M. #19 - R.R. spike in 3" Plum tree 75' Right Sta. 129+00 Elev. 452.55  
M. #20 - R.R. spike in 12" Locust tree 150' ft. of Sta. 184+00 Elev. 441.09

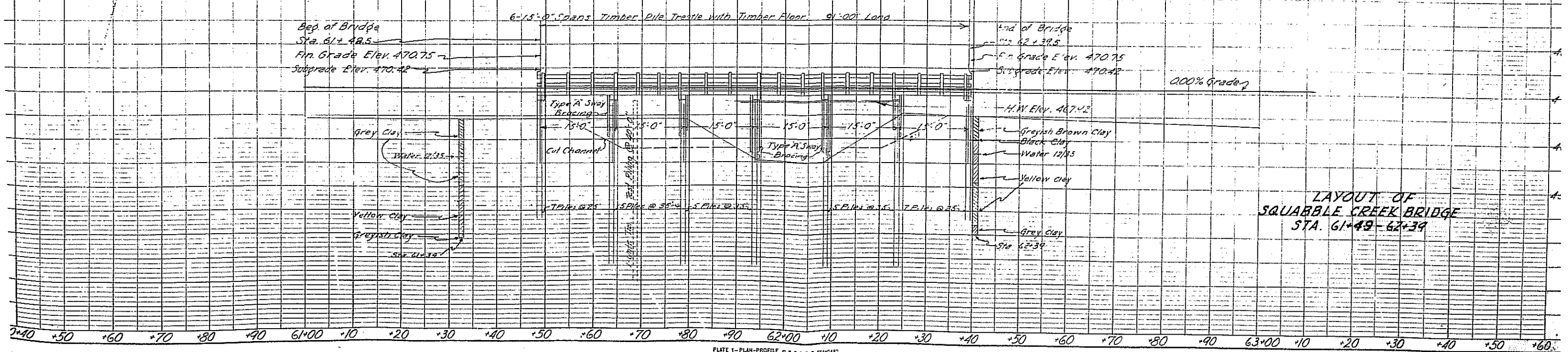
U.S. WORKS PROGRAM HIGHWAY			
PROJECT W.P.S.O. 917-A			
FED. ROAD DIST. NO.	STATE	FEDERAL AID PROJECT NO.	SHEET NO.
6	TEXAS		4
STATE DIV. NO.	COUNTY	STATE PROJECT NO.	HIGHWAY NO.
18	ROCKWALL		F



**ESTIMATED QUANTITIES.**

	To Timber 12" F.C. M.F.B.M.	To Timber 6" F.C. M.F.B.M.	To Timber Piling 6" F.C. Lin. Ft.	Untreated Tim. Test Filling Each
6 Spans Timber Pile Trestle - Timber Floor	23,114	1176	1225	1

D.A. = 681 Sq. Ft. C. 10  
 Waterway Regd. = 542 Sq. Ft.  
 Waterway Prev. = 589 Sq. Ft.



LAYOUT OF  
 SQUABBLE CREEK BRIDGE  
 STA. 61+48 - 62+39

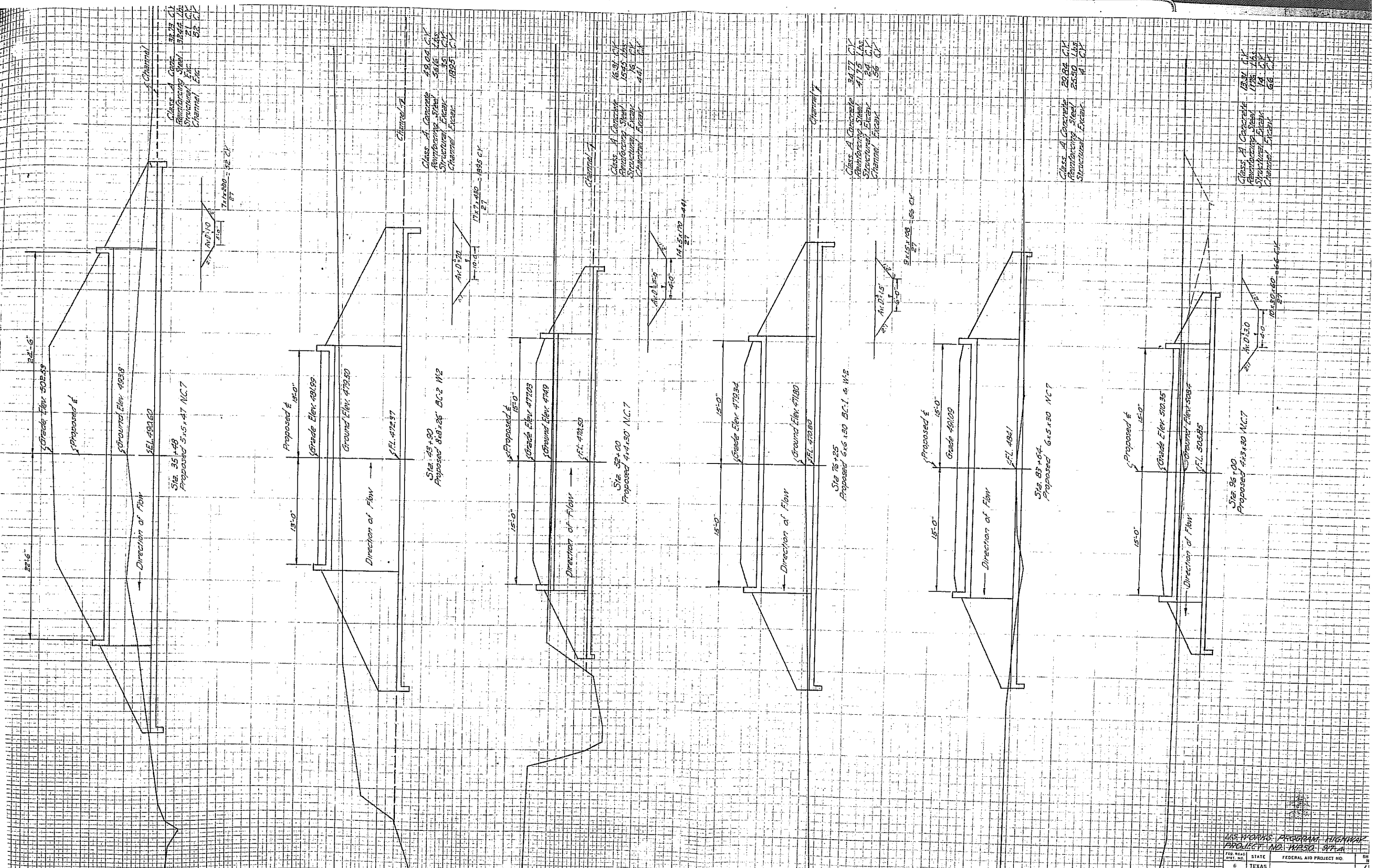
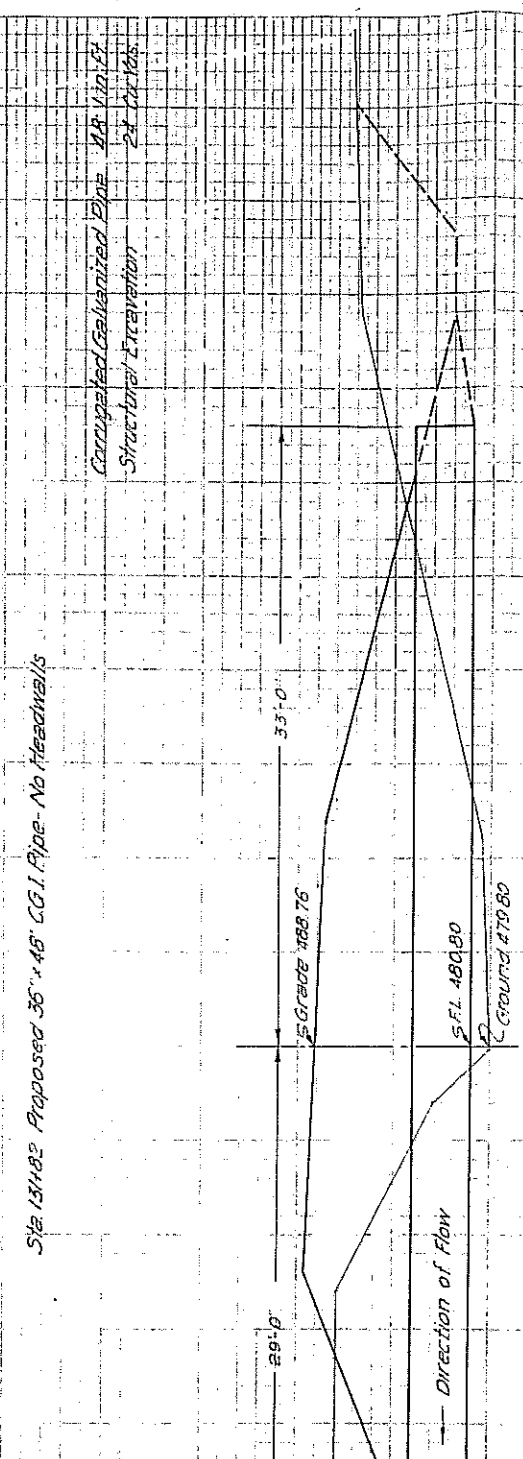
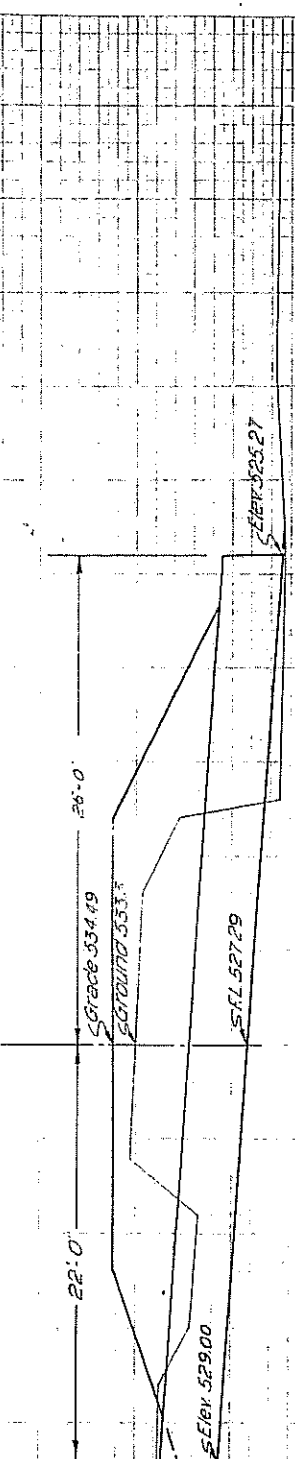
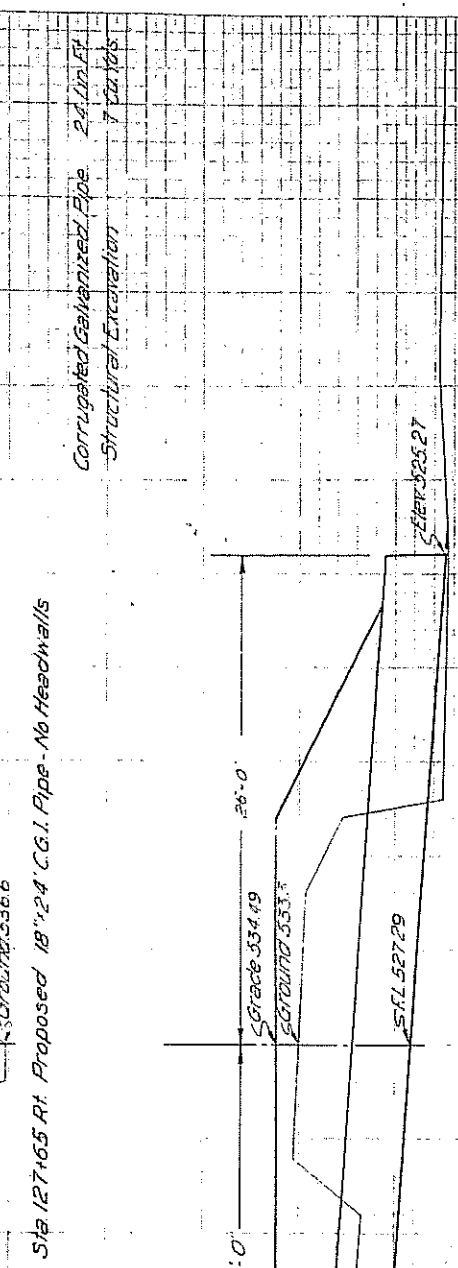
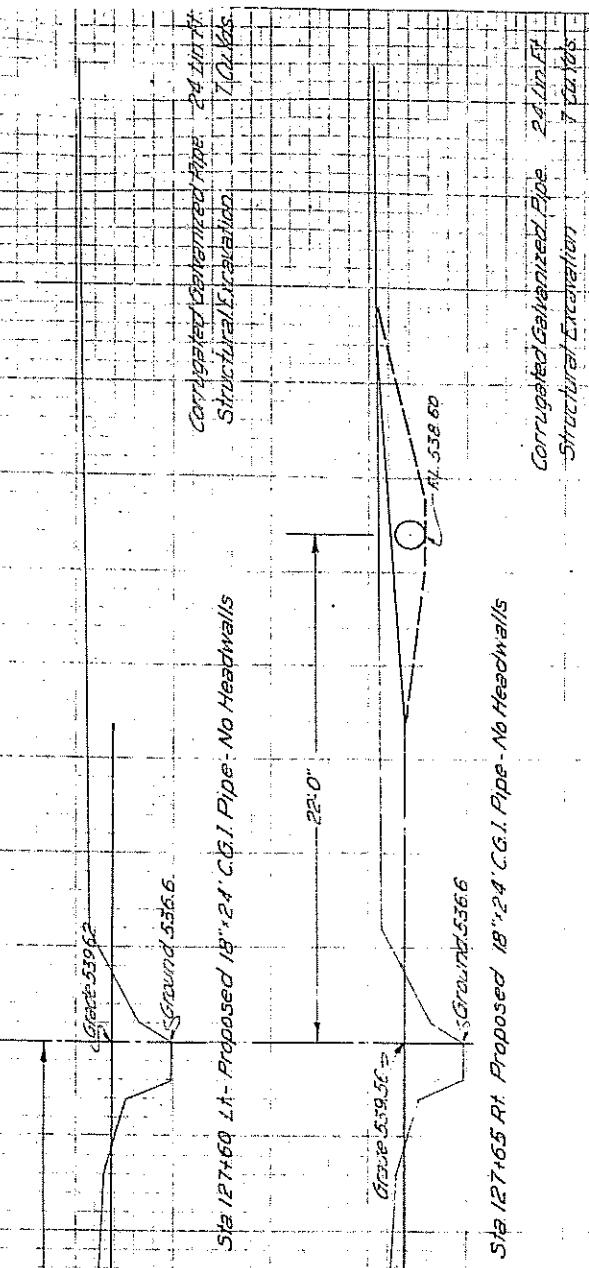


PLATE 2-CROSS SECTION D P. R. & L. STANDARD  
 KENTON & KENTON CO., NEW YORK

LAS VEGAS PROGRAM HIGHWAY  
 PROJECT NO. W-150-377-A

FED. ROAD DIST. NO.	STATE	FEDERAL AID PROJECT NO.	SM
6	TEXAS		1
STATE DIV. NO.	COUNTY	STATE PROJECT NO.	HIGHWAY NO.



U.S. PUBLIC WORKS PROGRAM ADMINISTRATION			
PROJECT W-0 W-150-0 BUT 1A			
FED. ROAD DIST. NO.	STATE	FEDERAL AID PROJECT NO.	SHEET NO.
0	TEXAS		14
STATE DIV. NO.	COUNTY	STATE PROJECT NO.	HIGHWAY NO.
18	ROCKWALL		F