

MATCH LINE STA 90+00.00

CSJ 0451-01-032 ENDS
CSJ 0451-01-044 BEGINS

CSJ 0451-01-044 ENDS
CSJ 0451-01-032 BEGINS

EXIST R.O.W.
(RR, STONE COMMON, -8IN)
39' CY

LINE NN
SEE SHT 12
FOR DETAILS

MH-NN1

CI-PP7

CI-PP6

CI-PP5

STATE HIGHWAY 205

LINE PP

24" X 712 LF

95+00
LINE NN
SEE SHT 12
FOR DETAILS

100+00

EXIST R.O.W.

LINE QQ
SEE SHT 54
FOR DETAILS

LINE NN
SEE SHT 12
FOR DETAILS

MATCH LINE STA 101+00.00

PLAN
SCALE: 1"=100'



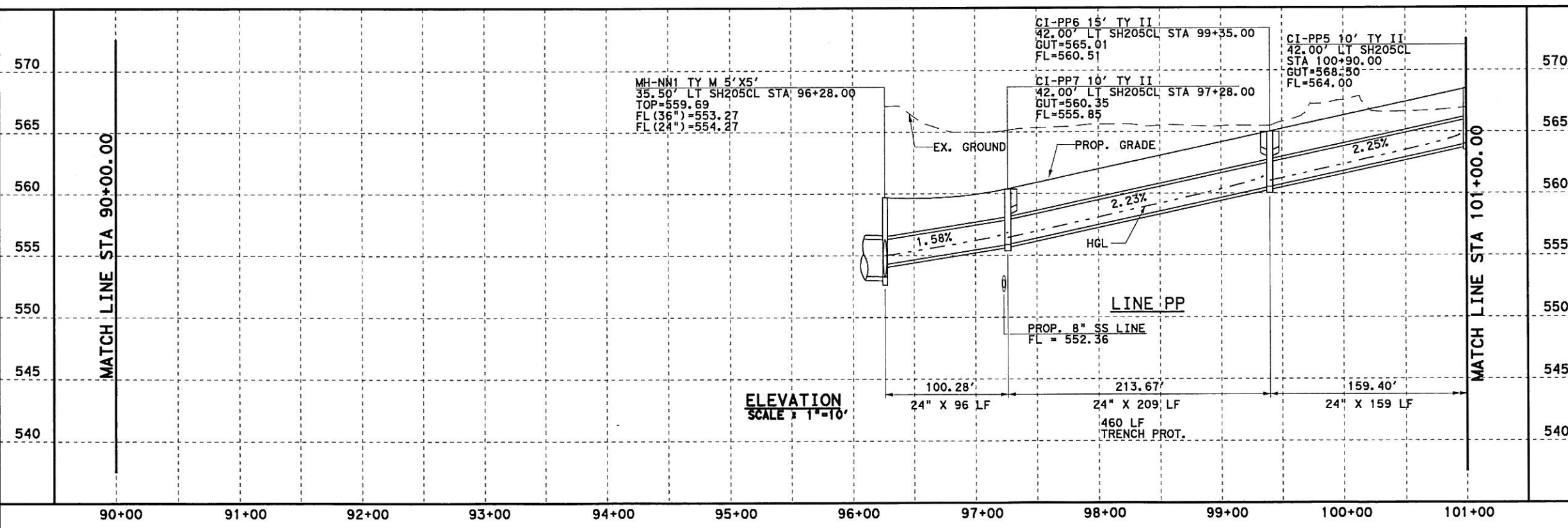
0 50 100
SCALE IN FEET
HORIZONTAL

0 5 10
SCALE IN FEET
VERTICAL

GENERAL NOTES

1. CURB INLETS STATION AND OFFSET ARE MEASURED TO THE MIDPOINT OF THE FACE OF MAIN INLET. GRATE INLETS STATION AND OFFSET ARE MEASURED TO THE CENTER OF THE INLET.
2. JUNCTION BOX STATION AND OFFSET ARE MEASURED TO THE CENTER OF THE JUNCTION BOX.
3. ALL PIPE ARE CLASS III UNLESS OTHERWISE NOTED.

DGN=01\JOBS\22451C-SH205.Dwg\image\2451cdp510.dgn, ON=CO-11, 13-623
3/25/2006 Plotted 25-MAR-2006 02:59

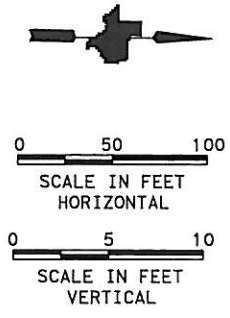
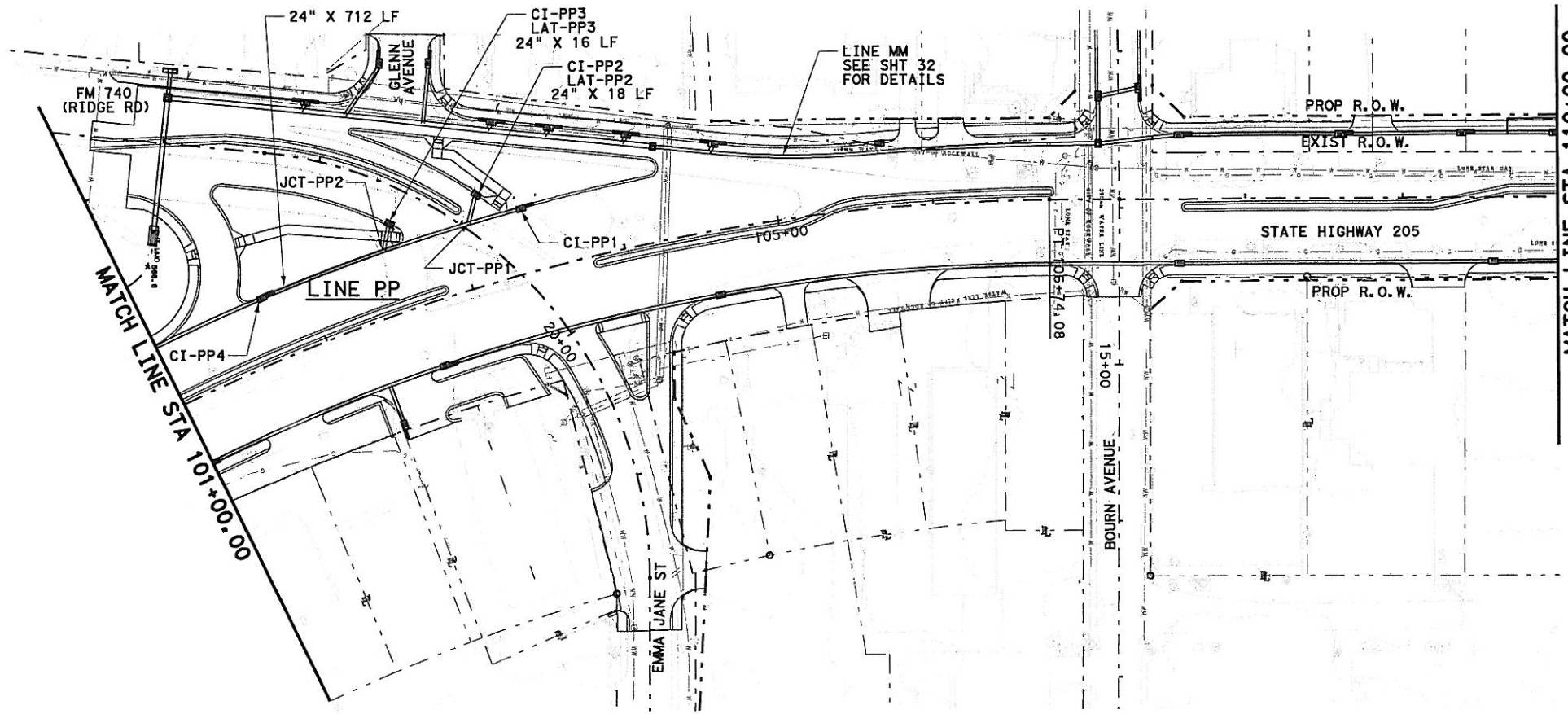


PB Parsons Brinckerhoff Quade & Douglas, Inc.
2777 Stemmons Freeway
Suite 1333
Dallas, TX 75207

Texas Department of Transportation
© 2006

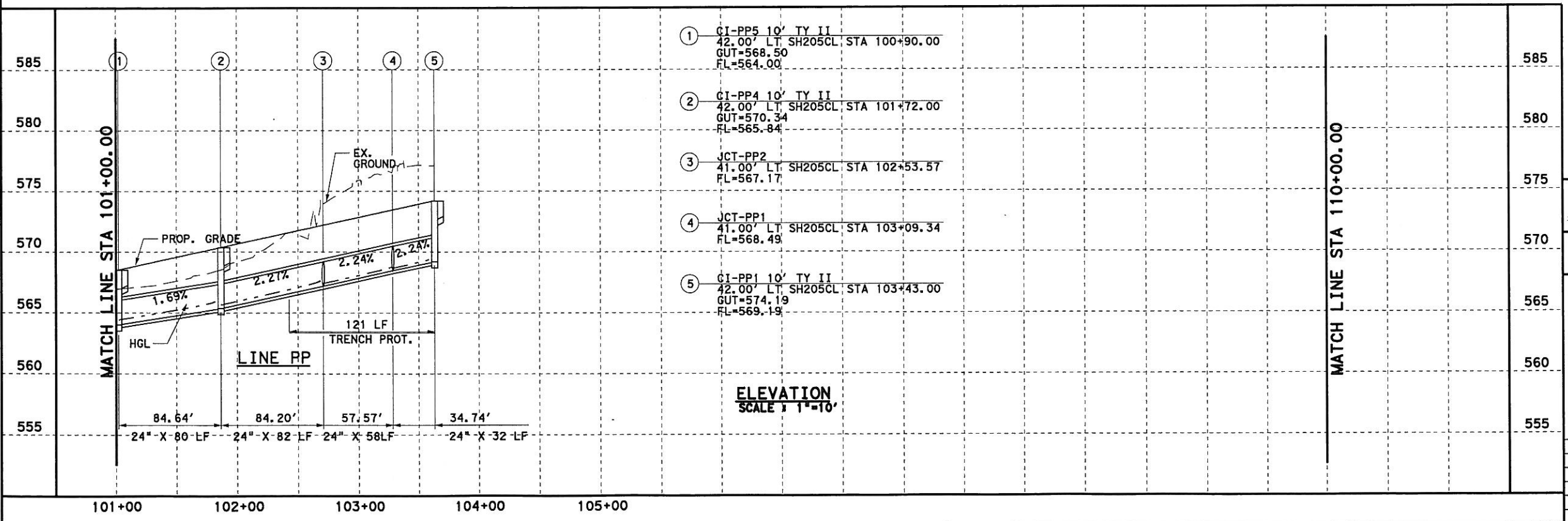
SH 205
SOUTHBOUND DRAINAGE
STORM SEWER PLAN & PROFILE
STA 90+00 TO 101+00
SHEET 30 OF 57

FED. RD. DIV. NO.	FEDERAL AID PROJECT NO.	HIGHWAY NO.
6	(SEE TITLE SHEET)	SH 205
STATE	DIST.	COUNTY
TEXAS	DALLAS	ROCKWALL
CONT.	SECT.	JOB
0451	01	032, ETC
SHEET NO. 430		



- GENERAL NOTES**
1. CURB INLETS STATION AND OFFSET ARE MEASURED TO THE MIDPOINT OF THE FACE OF MAIN INLET. GRATE INLETS STATION AND OFFSET ARE MEASURED TO THE CENTER OF THE INLET.
 2. JUNCTION BOX STATION AND OFFSET ARE MEASURED TO THE CENTER OF THE JUNCTION BOX.
 3. ALL PIPE ARE CLASS III UNLESS OTHERWISE NOTED.

PLAN
SCALE: 1"=100'



ELEVATION
SCALE: 1"=10'



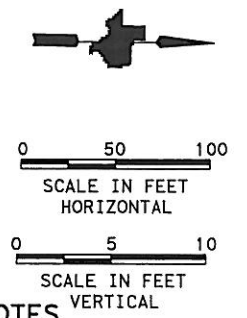
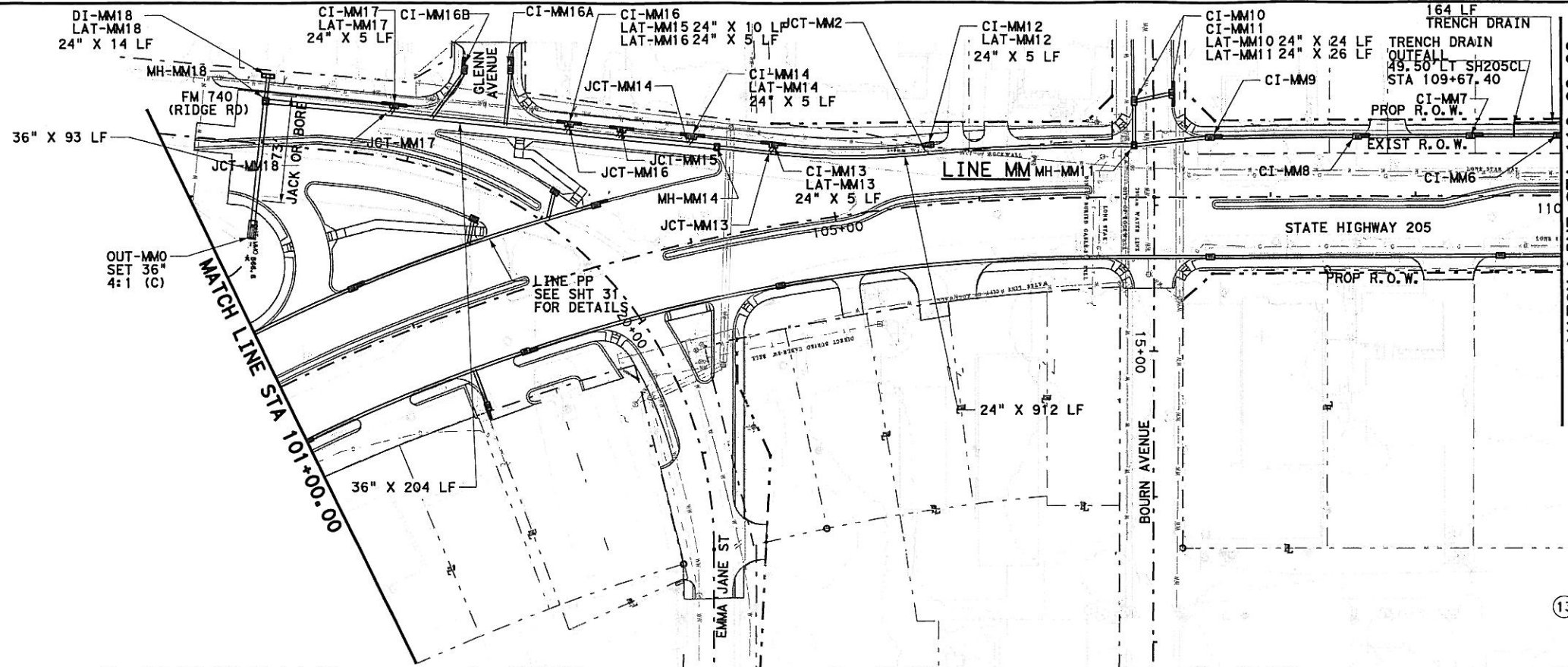
Parsons Brinckerhoff Quade & Douglas, Inc.
2777 Stemmons Freeway
Suite 1333
Dallas, TX 75207

Texas Department of Transportation
© 2006

SH 205
SOUTHBOUND DRAINAGE
STORM SEWER PLAN & PROFILE
STA 101+00 TO 110+00
SHEET 31 OF 57

FED. RD. DIV. NO.	FEDERAL AID PROJECT NO.	HIGHWAY NO.
6	(SEE TITLE SHEET)	SH 205
STATE	DIST.	COUNTY
TEXAS	DALLAS	ROCKWALL
CONT.	SECT.	JOB
0451	01	032, ETC
SHEET NO. 431		

DGN=C:\JOBS\22451C-SH205\Drawings\2451cdp511A.dgn, ON=10-11, 13-621
 3/25/2006 P:\p\ed 25-MAR-2006 02:59

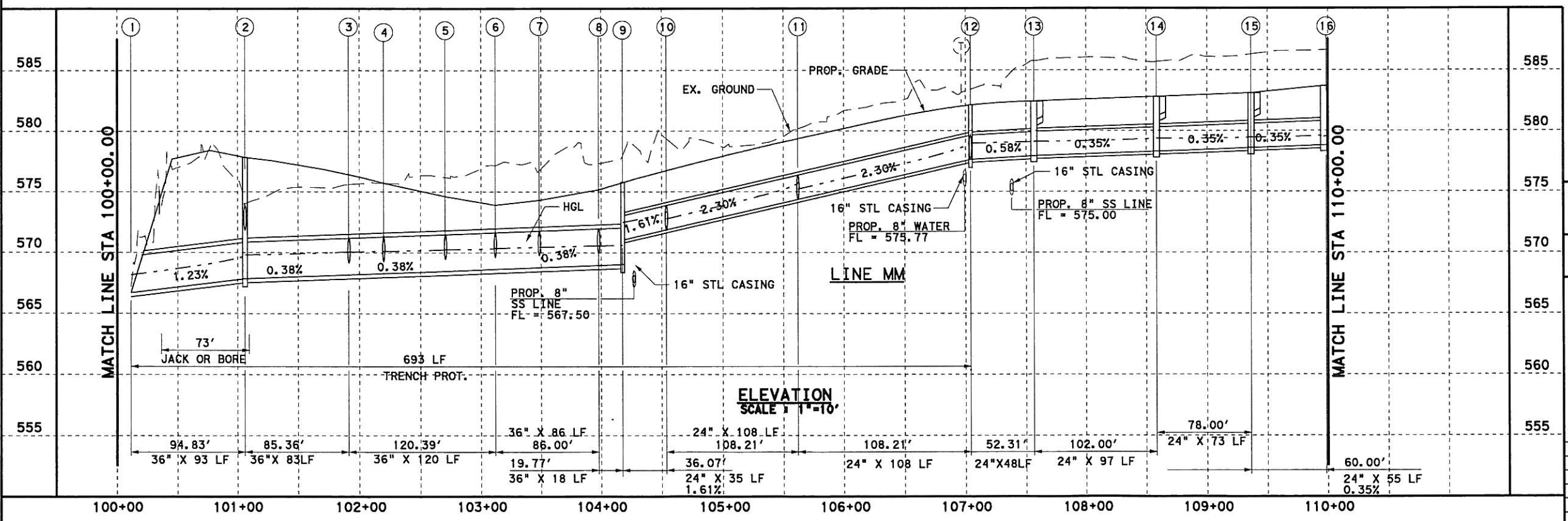


- GENERAL NOTES**
1. CURB INLETS STATION AND OFFSET ARE MEASURED TO THE MIDPOINT OF THE FACE OF MAIN INLET. GRATE INLETS STATION AND OFFSET ARE MEASURED TO THE CENTER OF THE INLET.
 2. JUNCTION BOX STATION AND OFFSET ARE MEASURED TO THE CENTER OF THE JUNCTION BOX.
 3. ALL PIPE ARE CLASS III UNLESS OTHERWISE NOTED.
 4. AT EACH TRENCH DRAIN OUTFALL LOCATION, PLACE INLINE CATCH BASIN WITH MIN. DEPTH OF 2.5' AND CONNECT 12" PVC PIPE TO THE NEAREST DRAINAGE STRUCTURE OR PIPE. BID PRICE FOR LF OF TRENCH DRAIN INCLUDES ALL ITEMS AND WORK FOR THE CONSTRUCTION OF THE ENTIRE TRENCH DRAIN SYSTEM.

- | | | | | |
|---|---|--|---|--|
| ① OUT-MMO SET 36" 4:1 (C)
100.15' LT SH205CL STA 101+24.68
FL=566.67 | ④ JCT-MM16B
130.95' LT SH205CL STA 103+35.82
FL36=568.27
FL24=569.27 | ⑦ JCT-MM15
82.15' LT SH205CL STA 103+67.90
FL36=568.76
FL24=569.76 | ⑩ JCT-MM13
50.25' LT SH205CL STA 104+63.20
FL=571.86 | ⑬ CI-MM9 10' TY II
42.00' LT SH205CL STA 107+58.00
GUT=582.42
FL=577.92 |
| ② MH-MM18 TY M 5'X5'
29.14' LT FM740 STA 16+99.95
TOP=577.84
FL=567.84 | ⑤ JCT-MM16A
110.50' LT SH205CL STA 103+00.30
FL36=568.47
FL24=569.47 | ⑧ JCT-MM14
66.26' LT SH205CL STA 104+12.04
FL36=568.95
FL24=569.95 | ⑪ JCT-MM12
35.50' LT SH205CL STA 105+66.75
FL24=574.35
FL24=574.35 | ⑭ CI-MM8 10' TY II
42.00' LT SH205CL STA 108+60.00
GUT=582.78
FL=578.28 |
| ③ JCT-MM17
29.65' LT FM740 STA 17+83.30
FL30=568.16
FL24=569.16 | ⑥ JCT-MM16
95.00' LT SH205CL STA 103+35.80
FL36=568.62
FL24=569.62 | ⑨ MH-MM14 TY M 5'X4'
60.30' LT SH205CL STA 104+30.00
TOP=575.78
FL=569.02 | ⑫ MH-MM11 TY M 5'X4'
35.50' LT SH205CL STA 107+06.00
TOP=582.12
FL24=577.62
FL24=577.62 | ⑮ CI-MM7 10' TY II
42.00' LT SH205CL STA 109+38.00
GUT=583.08
FL=578.58 |
| | | | | ⑯ CI-MM6 5' TY II
42.00' LT SH205CL STA 109+98.00
GUT=583.69
FL=578.79 |

- LEGENDS**
- (G) EX. GAS LINE CROSSING ELEVATION UNKNOWN
 - (T) EX. SW BELL CABLE CROSSING ELEVATION UNKNOWN

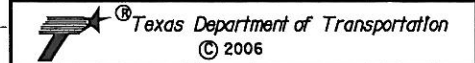
PLAN
SCALE 1"=100'



ELEVATION
SCALE 1"=10'



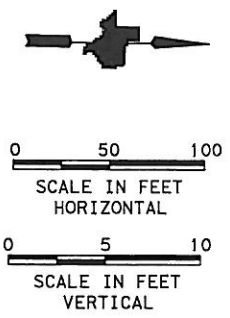
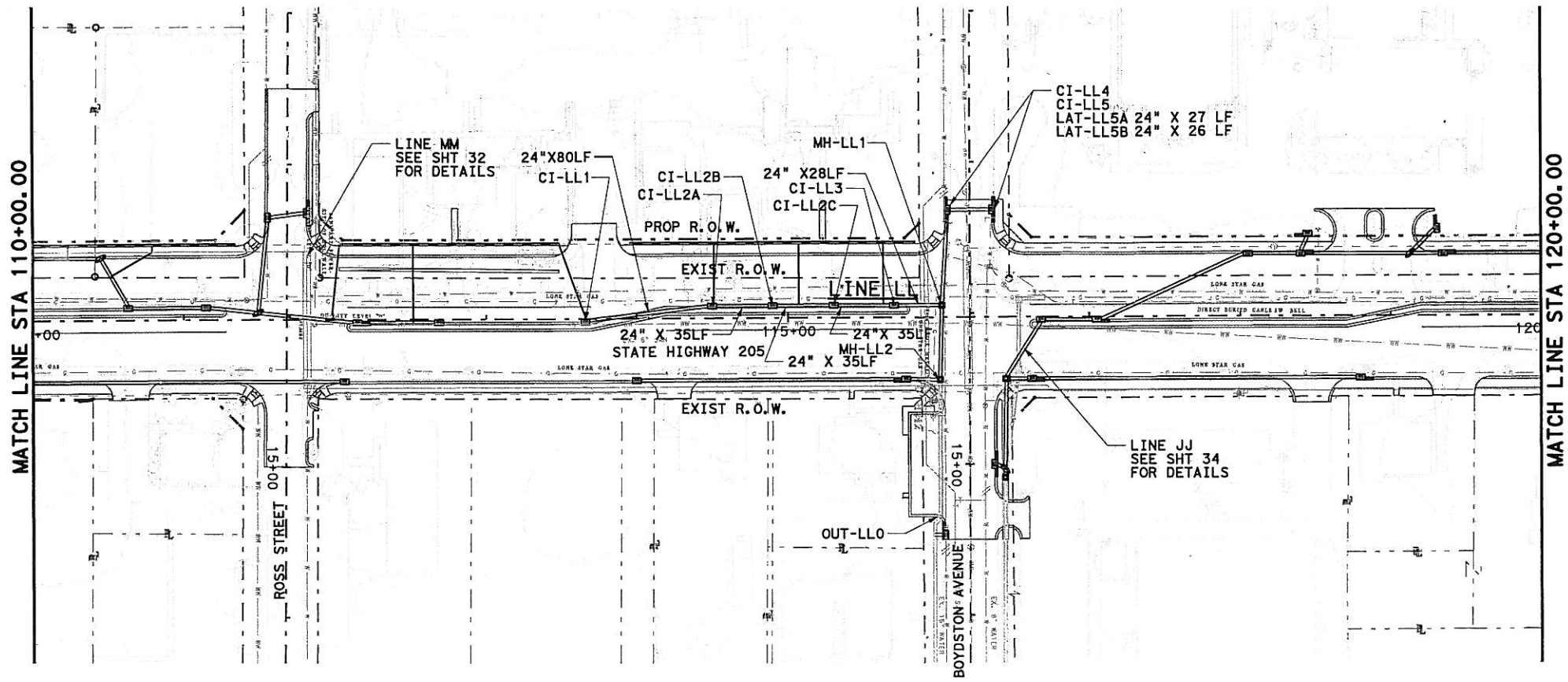
PB Parsons Brinckerhoff Quade & Douglas, Inc.
2777 Stemmons Freeway
Suite 1333
Dallas, TX 75207



SH 205
SOUTHBOUND DRAINAGE
STORM SEWER PLAN & PROFILE
STA 101+00 TO 110+00
SHEET 32 OF 57

FED. RD. DIV. NO.	FEDERAL AID PROJECT NO.	HIGHWAY NO.
6	(SEE TITLE SHEET)	SH 205
STATE	DIST.	COUNTY
TEXAS	DALLAS	ROCKWALL
CONT.	SECT.	JOB
0451	01	032, ETC
		SHEET NO.
		432

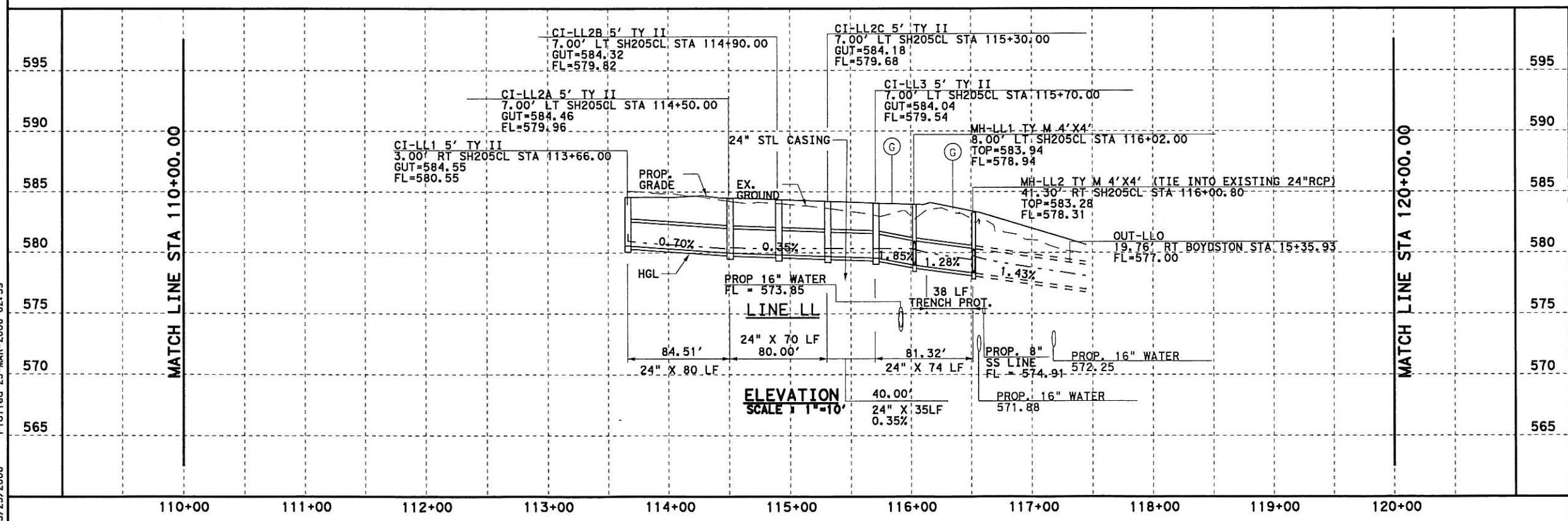
DGN=C:\JOBS\22451\IC-SH205\Drawings\2451\cdps11.dgn, ON=10-11, 13-621
3/25/2006 Plotted 25-MAR-2006 02:59



- GENERAL NOTES**
1. CURB INLETS STATION AND OFFSET ARE MEASURED TO THE MIDPOINT OF THE FACE OF MAIN INLET. GRATE INLETS STATION AND OFFSET ARE MEASURED TO THE CENTER OF THE INLET.
 2. JUNCTION BOX STATION AND OFFSET ARE MEASURED TO THE CENTER OF THE JUNCTION BOX.
 3. ALL PIPE ARE CLASS III UNLESS OTHERWISE NOTED.

- LEGENDS**
- (G) EX. GAS LINE CROSSING ELEVATION UNKNOWN
 - (T) EX. SW BELL CABLE CROSSING ELEVATION UNKNOWN

PLAN
SCALE 1"=100'



ELEVATION
SCALE 1"=10'



PB Parsons Brinckerhoff Quade & Douglas, Inc.
2777 Stemmons Freeway
Suite 1333
199 Dallas, TX 75207

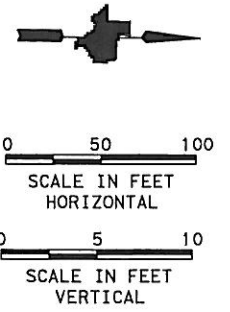
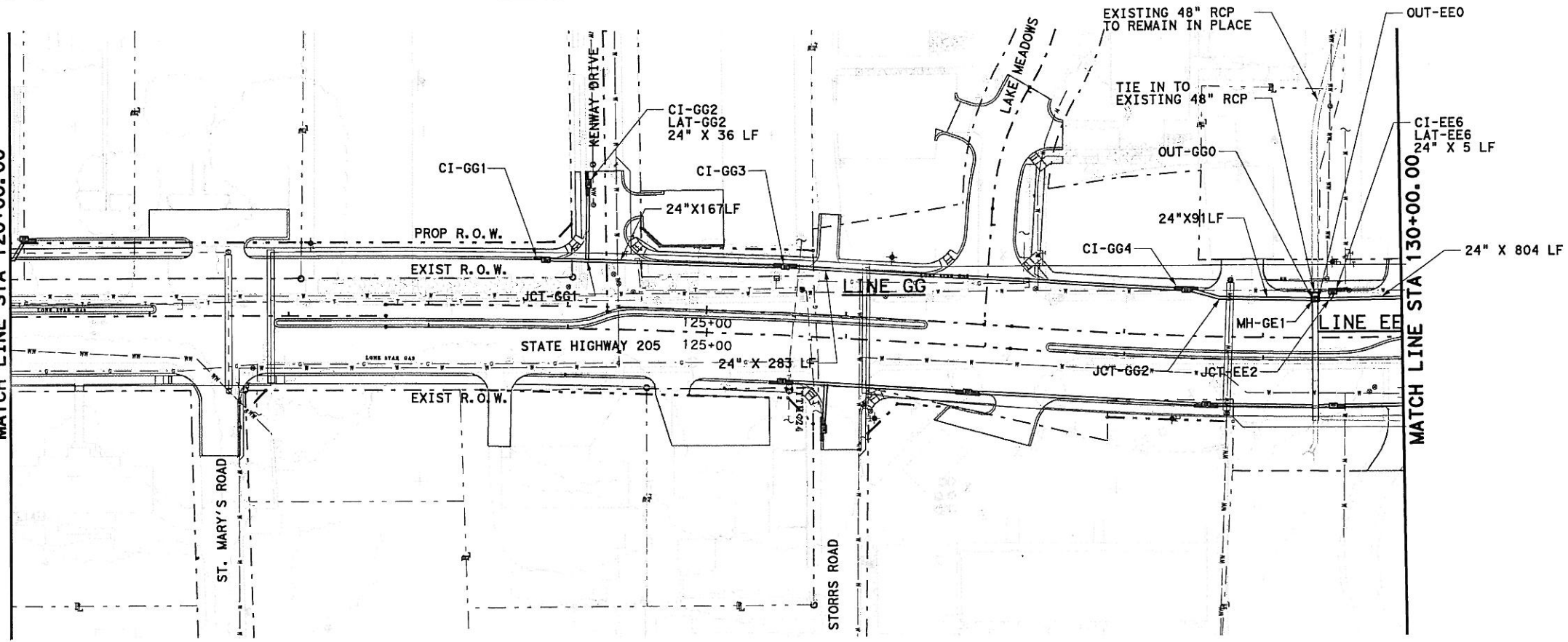


SH 205
SOUTHBOUND DRAINAGE
STORM SEWER PLAN & PROFILE
STA 110+00 TO 120+00
SHEET 33 OF 57

FED. RD. DIV. NO.	FEDERAL AID PROJECT NO.	HIGHWAY NO.
6	(SEE TITLE SHEET)	SH 205
STATE	DIST.	COUNTY
TEXAS	DALLAS	ROCKWALL
CONT.	SECT.	JOB
0451	01	032, ETC
		SHEET NO.
		433

DGN: G:\JOBS\22451C-SH205\Drawings\2451cdps12A.dgn, ON: 10-11, 13-621
 3/25/2006 Plotted 25-MAR-2006 02:59

MATCH LINE STA 120+00.00



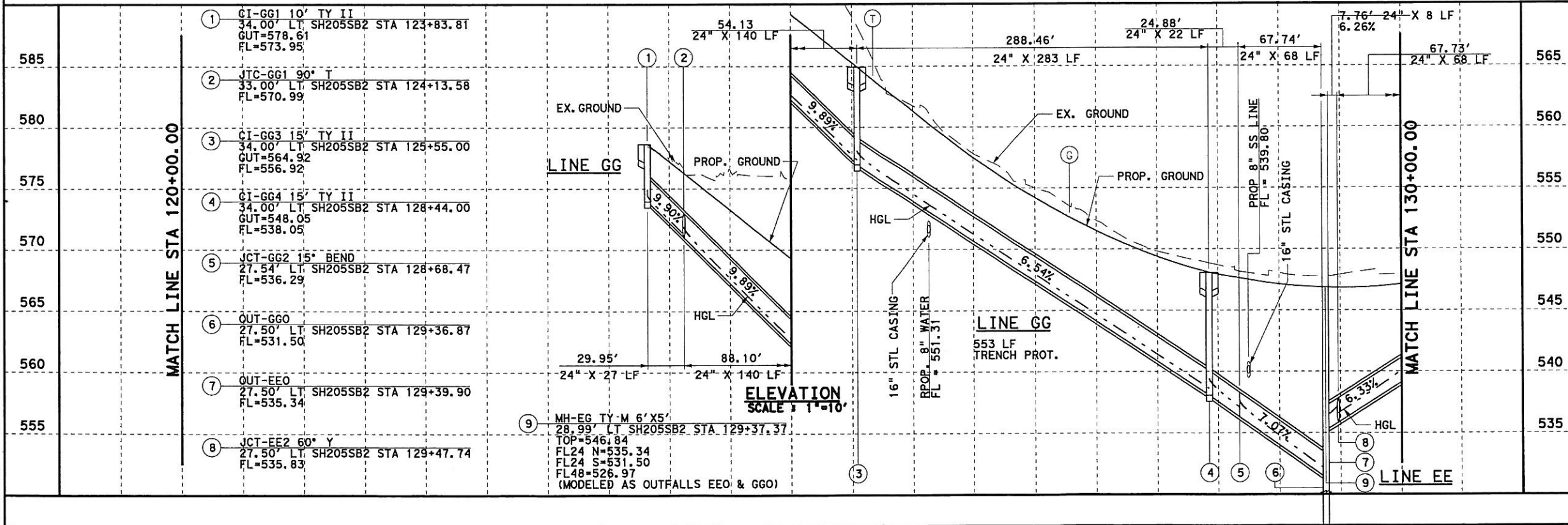
GENERAL NOTES

1. CURB INLETS STATION AND OFFSET ARE MEASURED TO THE MIDPOINT OF THE FACE OF MAIN INLET. GRATE INLETS STATION AND OFFSET ARE MEASURED TO THE CENTER OF THE INLET.
2. JUNCTION BOX STATION AND OFFSET ARE MEASURED TO THE CENTER OF THE JUNCTION BOX.
3. ALL PIPE ARE CLASS III UNLESS OTHERWISE NOTED.

LEGENDS

- (G) EX. GAS LINE CROSSING ELEVATION UNKNOWN
- (T) EX. SW BELL CABLE CROSSING ELEVATION UNKNOWN

PLAN
SCALE 1" = 100'



ELEVATION
SCALE 1" = 10'



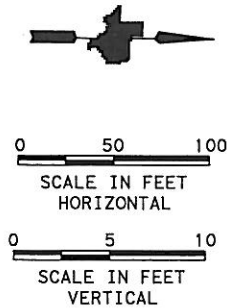
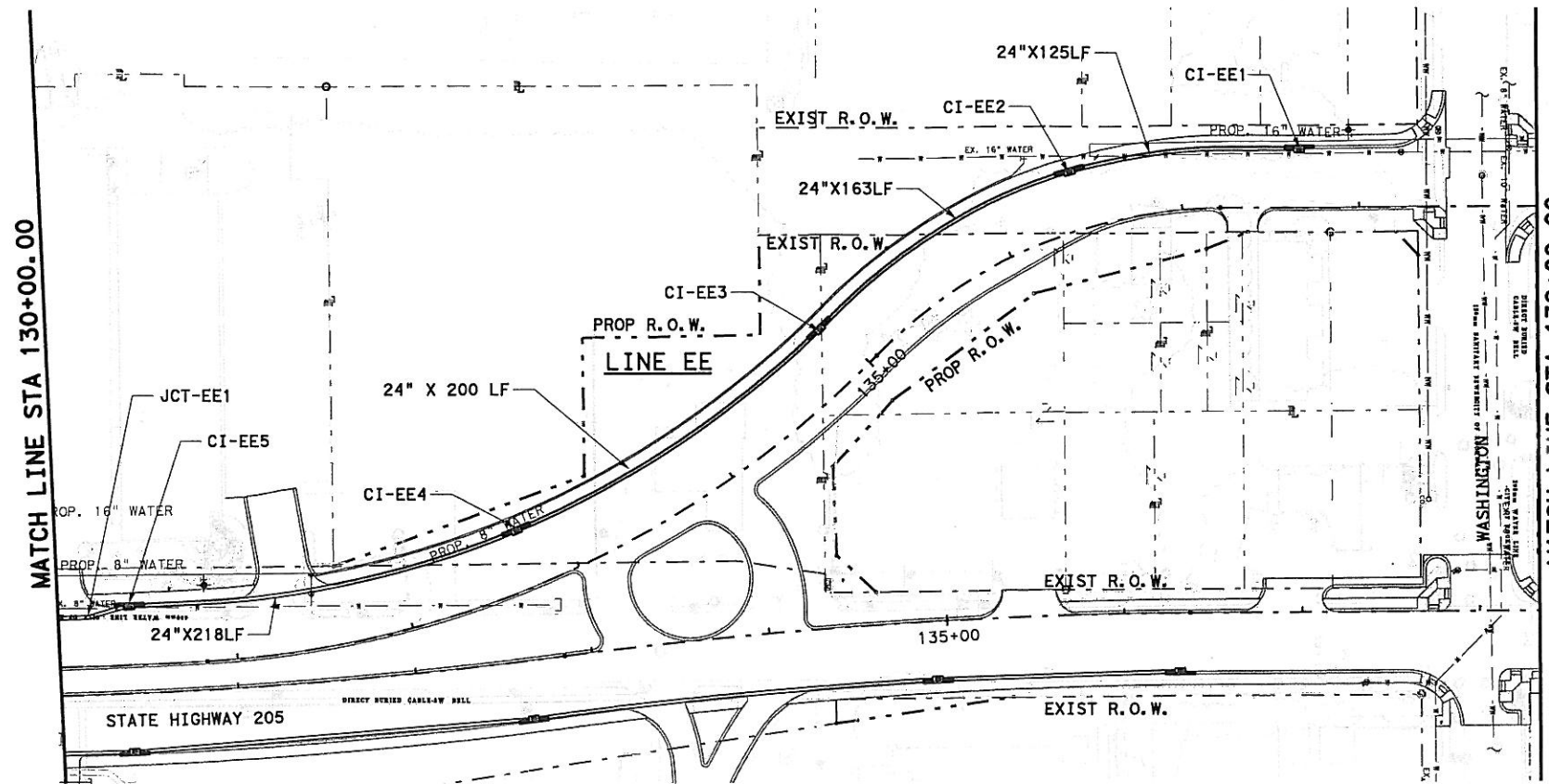
Parsons Brinckerhoff Quade & Douglas, Inc.
2777 Stemmons Freeway
Suite 1333
Dallas, TX 75207

Texas Department of Transportation
© 2006

SH 205
SOUTHBOUND DRAINAGE
STORM SEWER PLAN & PROFILE
STA 120+00 TO 130+00
SHEET 35 OF 57

FED. RD. DIV. NO.	FEDERAL AID PROJECT NO.	HIGHWAY NO.
6	(SEE TITLE SHEET)	SH 205
STATE	DIST.	COUNTY
TEXAS	DALLAS	ROCKWALL
CONT.	SECT.	JOB
0451	01	032, ETC
		SHEET NO.
		435

D:\N\0522451C-SH205\Drawings\2451\odps13.dgn, ON-10-11, 13-621
 3/25/2006 Plotted 25-MAR-2006 08:50



GENERAL NOTES

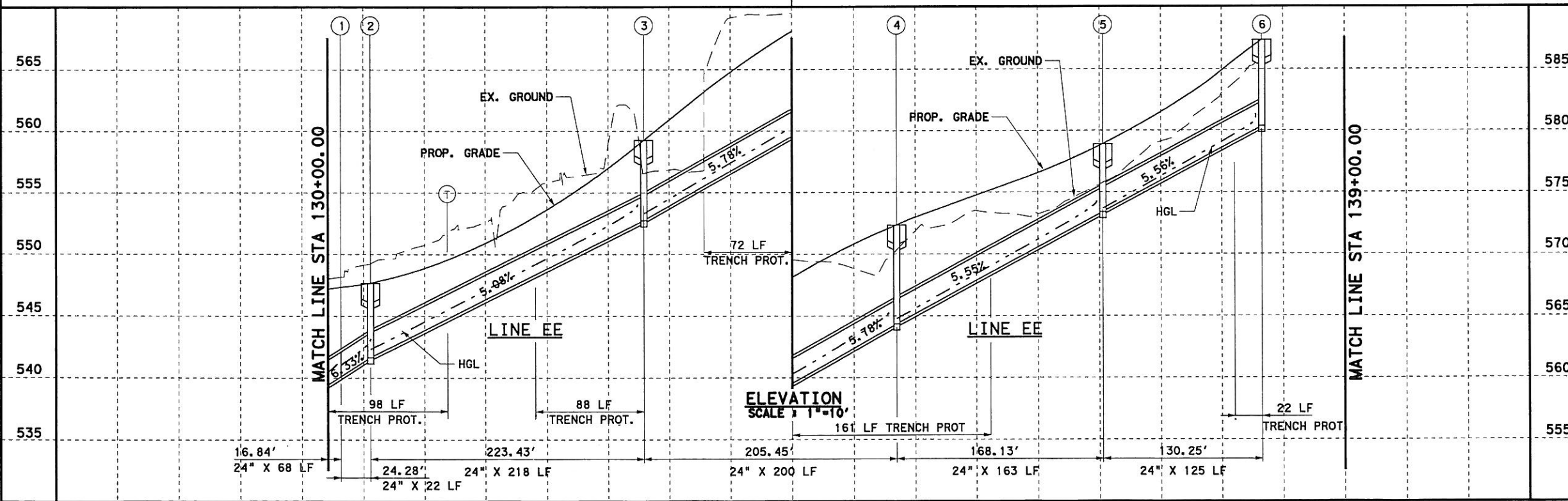
1. CURB INLETS STATION AND OFFSET ARE MEASURED TO THE MIDPOINT OF THE FACE OF MAIN INLET. GRATE INLETS STATION AND OFFSET ARE MEASURED TO THE CENTER OF THE INLET.
2. JUNCTION BOX STATION AND OFFSET ARE MEASURED TO THE CENTER OF THE JUNCTION BOX.
3. ALL PIPE ARE CLASS III UNLESS OTHERWISE NOTED.

LEGENDS

- ⊙ EX. GAS LINE CROSSING ELEVATION UNKNOWN
- ⊙ EX. SW BELL CABLE CROSSING ELEVATION UNKNOWN

- | | |
|---|---|
| ① JCT-EE1 15' BEND
27.65' LT SH205SB2 STA 130+16.13
FL=540.11 | ④ CI-EE3 15' TY II
34.00' LT SH205SB2 STA 134+93.00
GUT=572.33
FL=567.83 |
| ② CI-EE5 15' TY II
34.00' LT SH205SB2 STA 130+40.00
GUT=547.65
FL=541.65 | ⑤ CI-EE2 15' TY II
34.00' LT SH205SB2 STA 136+45.00
GUT=578.89
FL=574.39 |
| ③ CI-EE4 15' TY II
34.00' LT SH205SB2 STA 132+75.00
GUT=559.23
FL=554.73 | ⑥ CI-EE1 15' TY II
34.00' LT SH205SB2 STA 137+66.00
GUT=587.35
FL=582.85 |

PLAN
SCALE 1"=100'



ELEVATION
SCALE 1"=10'



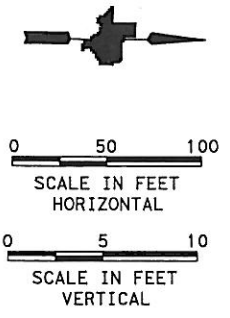
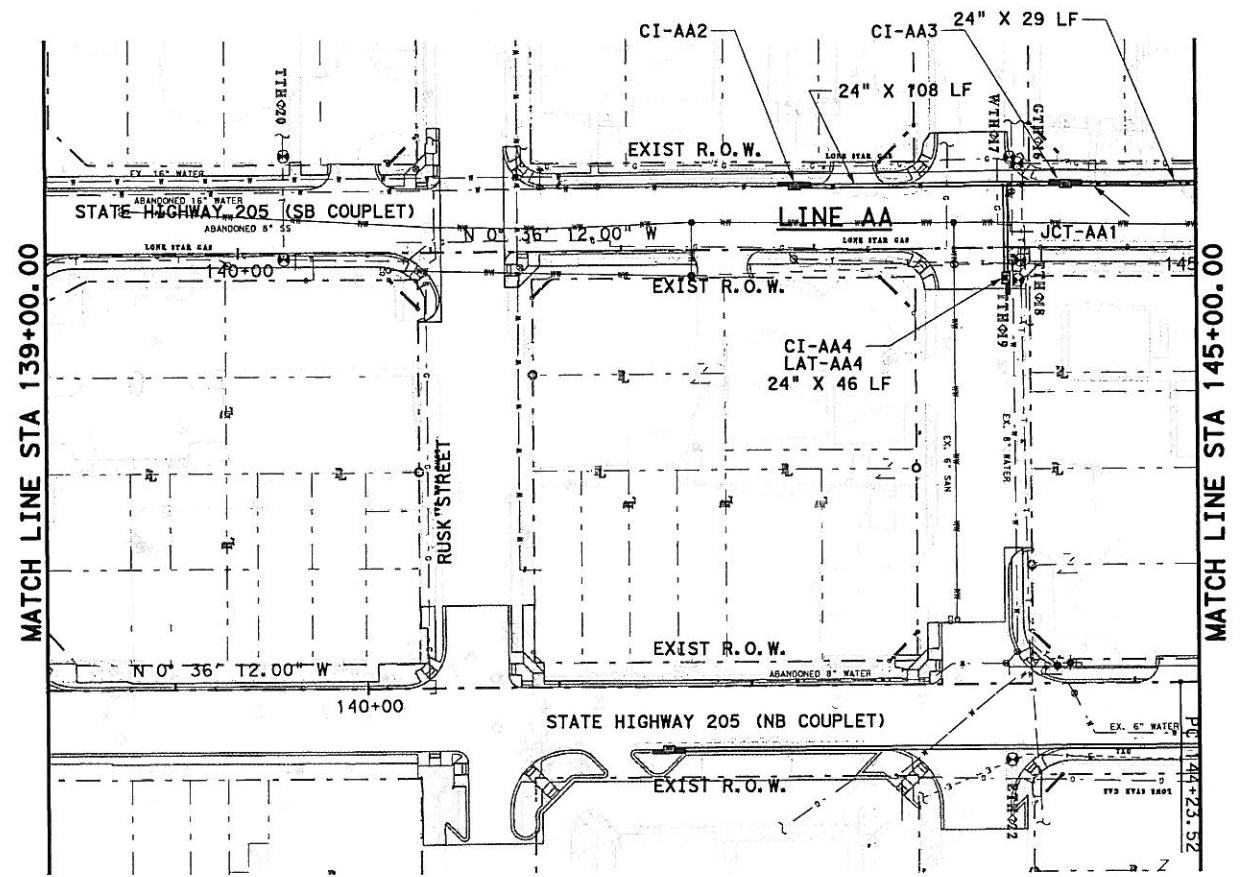
PB Parsons Brinckerhoff Quade & Douglas, Inc.
2777 Stemmons Freeway
Suite 1333
Dallas, TX 75207

Texas Department of Transportation
© 2006

SH 205
SOUTHBOUND DRAINAGE
SB COUPLET
STORM SEWER PLAN & PROFILE
STA 130+00 TO 139+00
SHEET 36 OF 57

FED. RD. DIV. NO.	FEDERAL AID PROJECT NO.	HIGHWAY NO.
6	(SEE TITLE SHEET)	SH 205
STATE	DIST.	COUNTY
TEXAS	DALLAS	ROCKWALL
CONT.	SECT.	JOB
0451	01	032, ETC
		SHEET NO.
		436

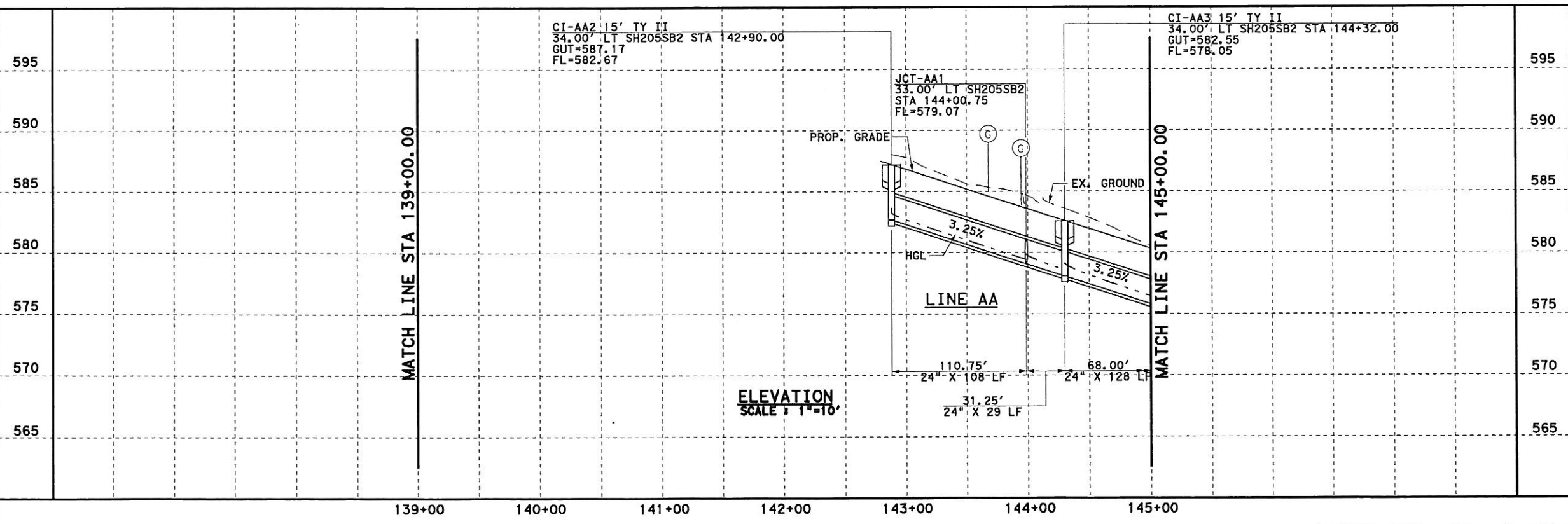
DGN:G:\JOBS\22451C-SH205\Drawings\2451cdps17.dgn, DN=10-11, 13-623
 3/25/2006 P:\dtd 25-MAR-2006 03:00



- GENERAL NOTES**
- CURB INLETS STATION AND OFFSET ARE MEASURED TO THE MIDPOINT OF THE FACE OF MAIN INLET. GRATE INLETS STATION AND OFFSET ARE MEASURED TO THE CENTER OF THE INLET.
 - JUNCTION BOX STATION AND OFFSET ARE MEASURED TO THE CENTER OF THE JUNCTION BOX.
 - ALL PIPE ARE CLASS III UNLESS OTHERWISE NOTED.

- LEGENDS**
- (G) EX. GAS LINE CROSSING ELEVATION UNKNOWN
 - (T) EX. SW BELL CABLE CROSSING ELEVATION UNKNOWN

PLAN
SCALE 1"=100'



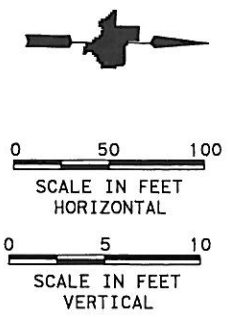
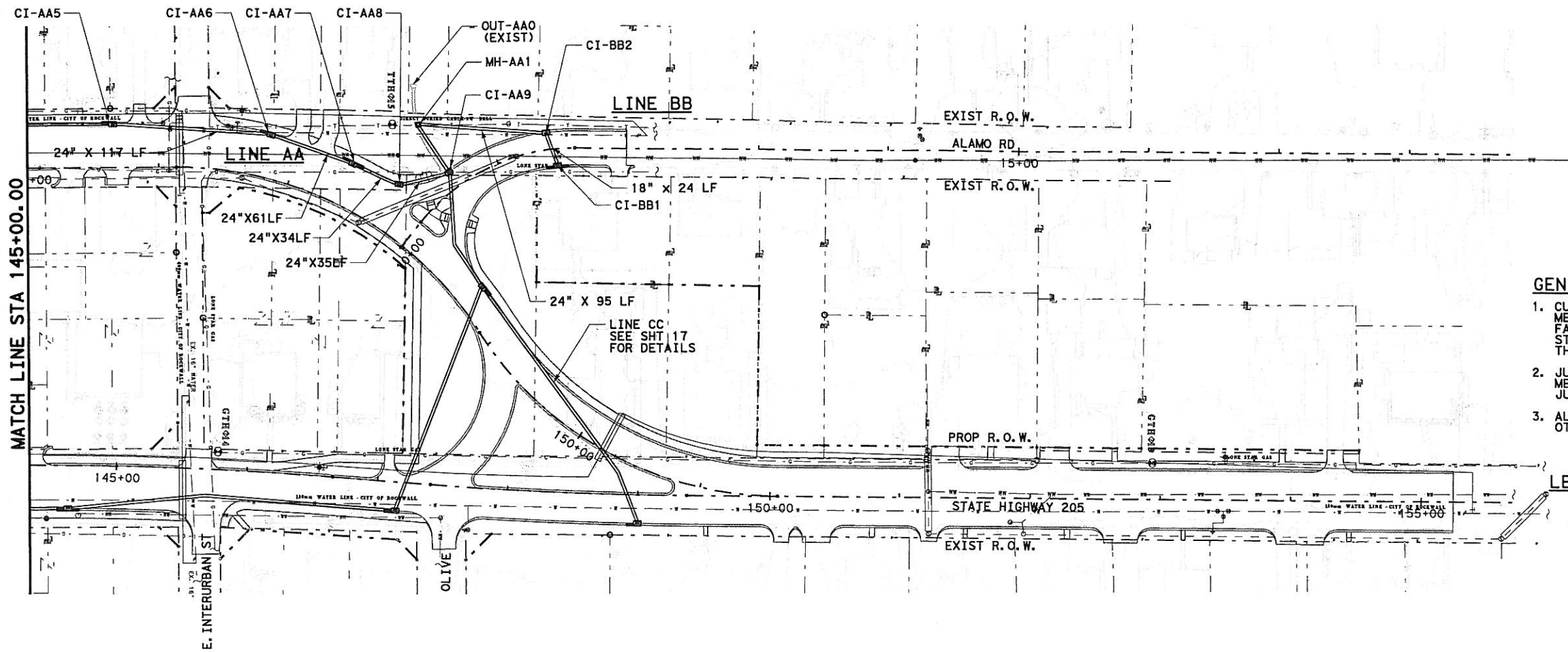
PB Parsons Brinckerhoff Quade & Douglas, Inc.
2777 Stemmons Freeway
Suite 1333
Dallas, TX 75207

Texas Department of Transportation
© 2006

SH 205
SOUTHBOUND DRAINAGE
SB COUPLER
STORM SEWER PLAN & PROFILE
STA 139+00 TO 145+00
SHEET 37 OF 57

FED. RD. DIV. NO.	FEDERAL AID PROJECT NO.	HIGHWAY NO.
6	(SEE TITLE SHEET)	SH 205
STATE	DIST.	COUNTY
TEXAS	DALLAS	ROCKWALL
CONT.	SECT.	JOB
0451	01	032, ETC
SHEET NO.		
437		

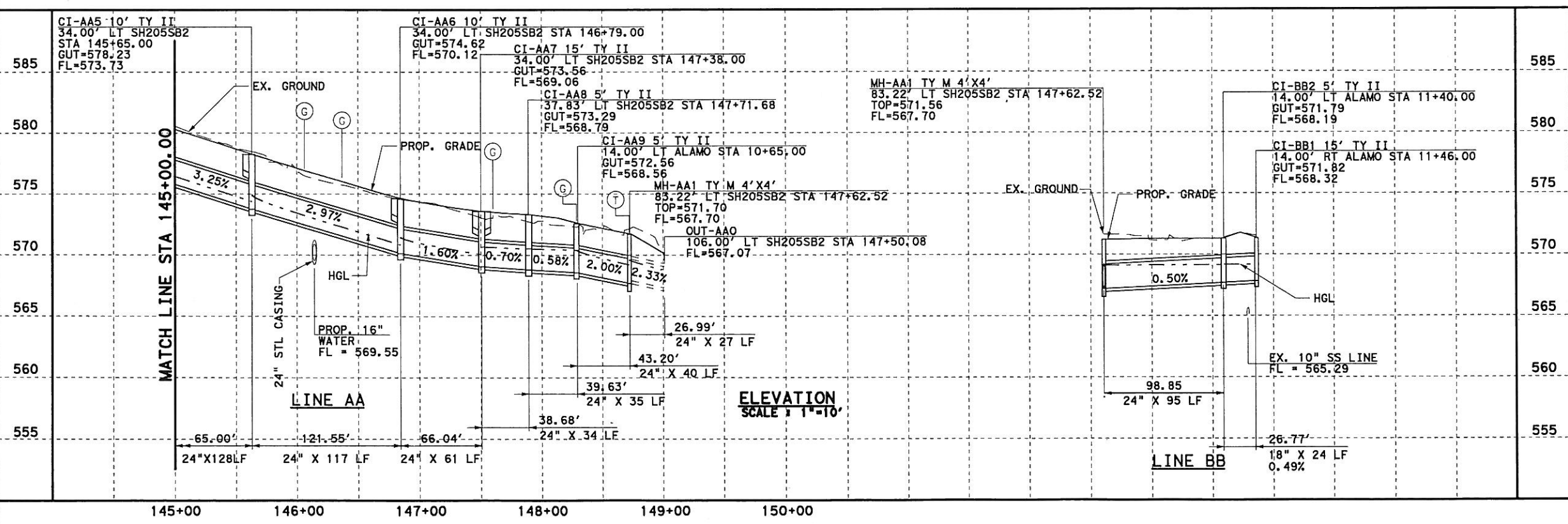
DGN: G:\JOBS\22451C-SH205\Drawings\2451cdps18.dgn, ON: 10-11, 13-621
 3/25/2006 Plotted 25-MAR-2006 03:00



- GENERAL NOTES**
1. CURB INLETS STATION AND OFFSET ARE MEASURED TO THE MIDPOINT OF THE FACE OF MAIN INLET. GRATE INLETS STATION AND OFFSET ARE MEASURED TO THE CENTER OF THE INLET.
 2. JUNCTION BOX STATION AND OFFSET ARE MEASURED TO THE CENTER OF THE JUNCTION BOX.
 3. ALL PIPE ARE CLASS III UNLESS OTHERWISE NOTED.

- LEGENDS**
- (G) EX. GAS LINE CROSSING ELEVATION UNKNOWN
 - (T) EX. SW BELL CABLE CROSSING ELEVATION UNKNOWN

PLAN
SCALE 1"=100'



ELEVATION
SCALE 1"=10'



PB Parsons Brinckerhoff Quade & Douglas, Inc.
2777 Stemmons Freeway
Suite 1333
Dallas, TX 75207



SH 205
SOUTHBOUND DRAINAGE
SB COUPLER
STORM SEWER PLAN & PROFILE
STA 145+00 TO END OF PROJECT

SHEET 38 OF 57

FED. RD. DIV. NO.	FEDERAL AID PROJECT NO.	HIGHWAY NO.
6	(SEE TITLE SHEET)	SH 205
STATE	DIST.	COUNTY
TEXAS	DALLAS	ROCKWALL
CONT.	SECT.	JOB
0451	01	032, ETC
SHEET NO.		
438		

DGN=C:\JOBS\22451C-SH205\Drawings\2451cdps19.dgn, ON=[0-1], 13-621
 3/25/2006 Plotted 25-MAR-2006 03:00