

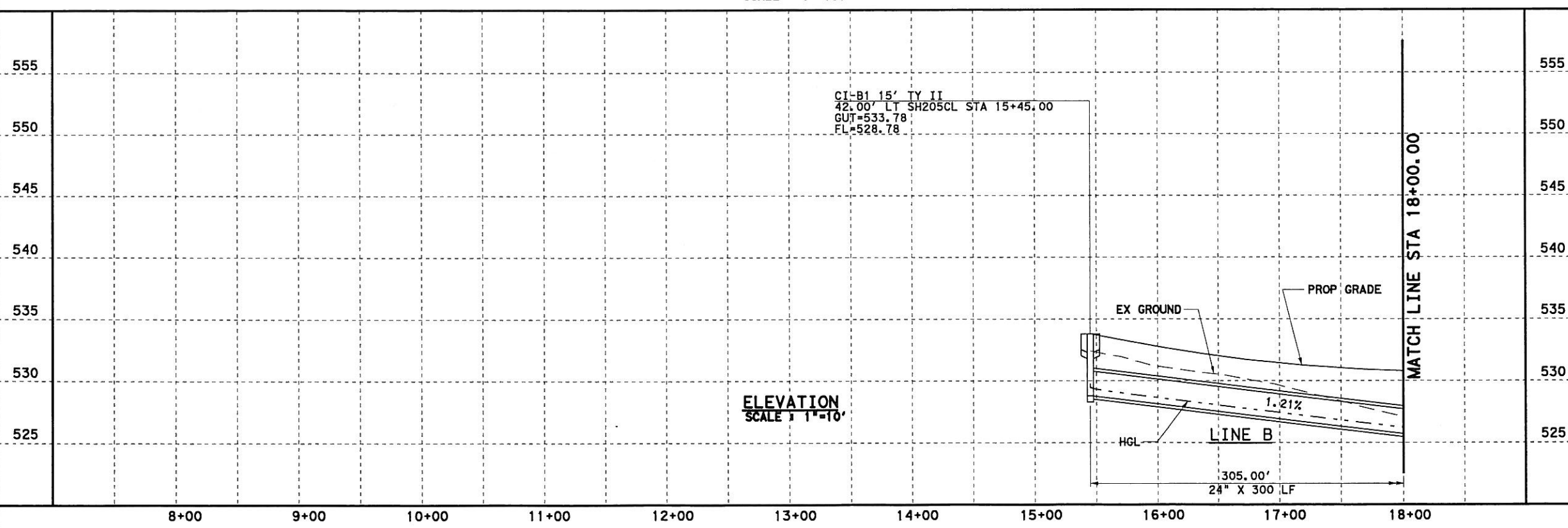
0 50 100
SCALE IN FEET
HORIZONTAL

0 5 10
SCALE IN FEET
VERTICAL

GENERAL NOTES

1. CURB INLETS STATION AND OFFSET ARE MEASURED TO THE MIDPOINT OF THE FACE OF MAIN INLET. GRATE INLETS STATION AND OFFSET ARE MEASURED TO THE CENTER OF THE INLET.
2. JUNCTION BOX STATION AND OFFSET ARE MEASURED TO THE CENTER OF THE JUNCTION BOX.
3. ALL PIPE ARE CLASS III UNLESS OTHERWISE NOTED.

PLAN
SCALE 1"=100'



ELEVATION
SCALE 1"=10'



PB Parsons Brinckerhoff Quade & Douglas, Inc.
2777 Stemmons Freeway
Suite 1333
192 Dallas, TX 75207

Texas Department of Transportation
© 2006

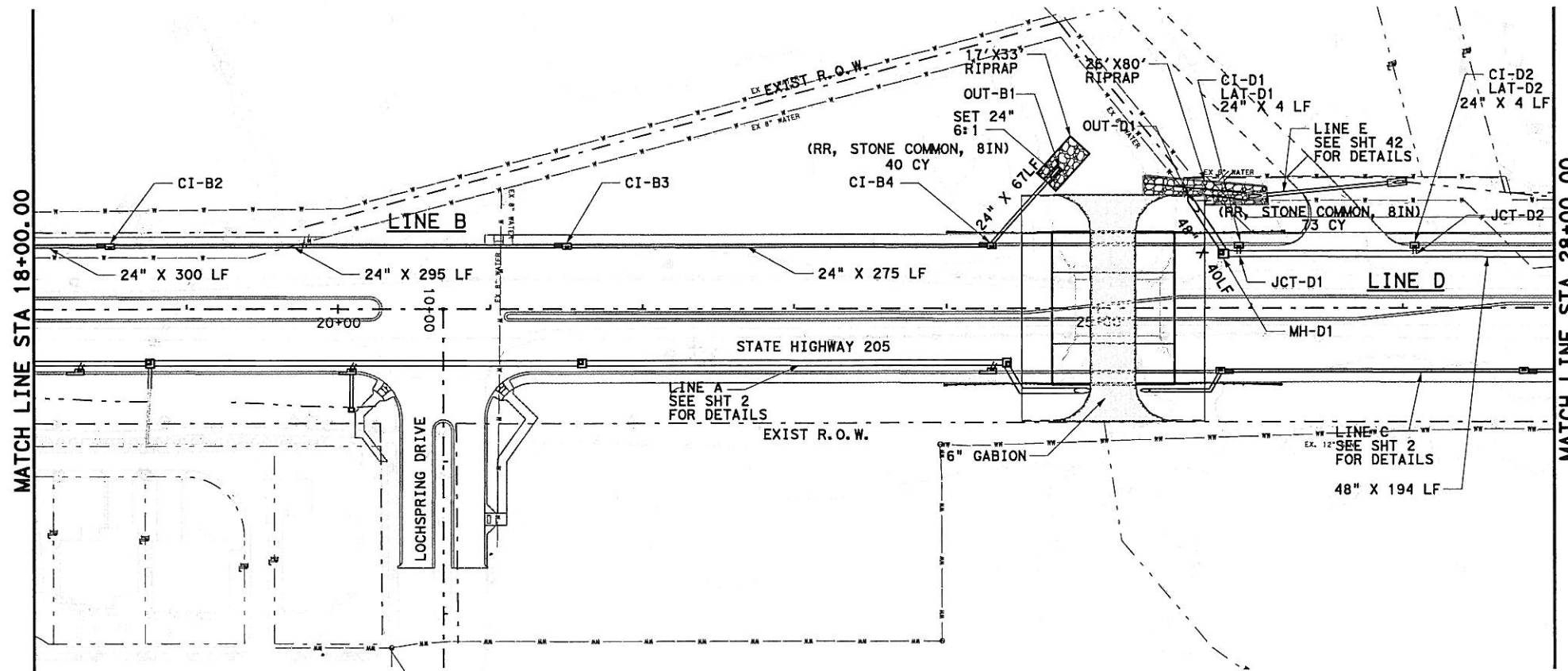
SH 205

SOUTHBOUND DRAINAGE
STORM SEWER PLAN & PROFILE
STA 8+00 TO 18+00

SHEET 18 OF 57

FED. RD. DIV. NO.	FEDERAL AID PROJECT NO.	HIGHWAY NO.
6	(SEE TITLE SHEET)	SH 205
STATE	DIST.	COUNTY
TEXAS	DALLAS	ROCKWALL
CONT.	SECT.	JOB
0451	01	032, ETC
		SHEET NO.
		418

DGN:G:\JOBS\22451C-SH205\Drawings\2451odps02.dgn, ON-[0-11, 13-62]
 3/25/2006 Plotted 25-MAR-2006 02:58



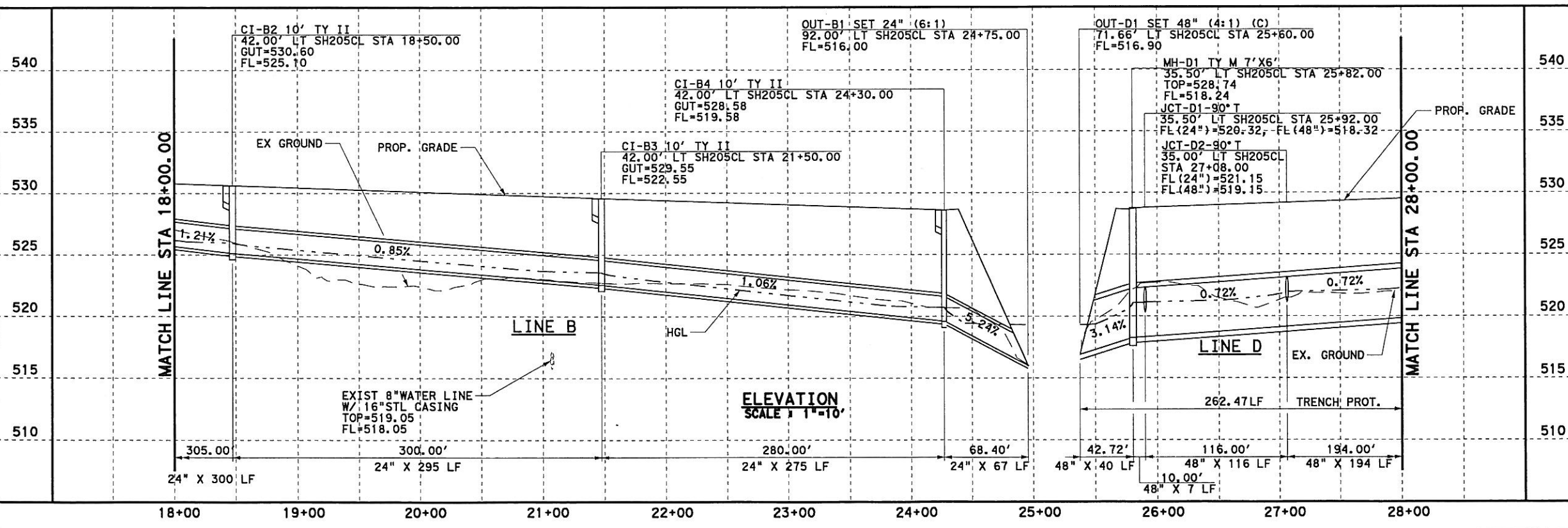
0 50 100
SCALE IN FEET
HORIZONTAL

0 5 10
SCALE IN FEET
VERTICAL

GENERAL NOTES

1. CURB INLETS STATION AND OFFSET ARE MEASURED TO THE MIDPOINT OF THE FACE OF MAIN INLET. GRATE INLETS STATION AND OFFSET ARE MEASURED TO THE CENTER OF THE INLET.
2. JUNCTION BOX STATION AND OFFSET ARE MEASURED TO THE CENTER OF THE JUNCTION BOX.
3. ALL PIPE ARE CLASS III UNLESS OTHERWISE NOTED.

PLAN
SCALE 1"=100'



ELEVATION
SCALE 1"=10'



PB Parsons Brinckerhoff Quade & Douglas, Inc.
2777 Stemmons Freeway
Suite 1333
Dallas, TX 75207

Texas Department of Transportation
© 2006

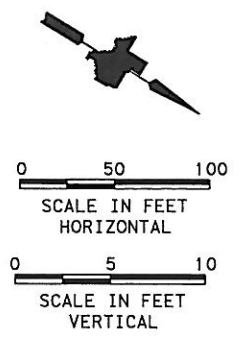
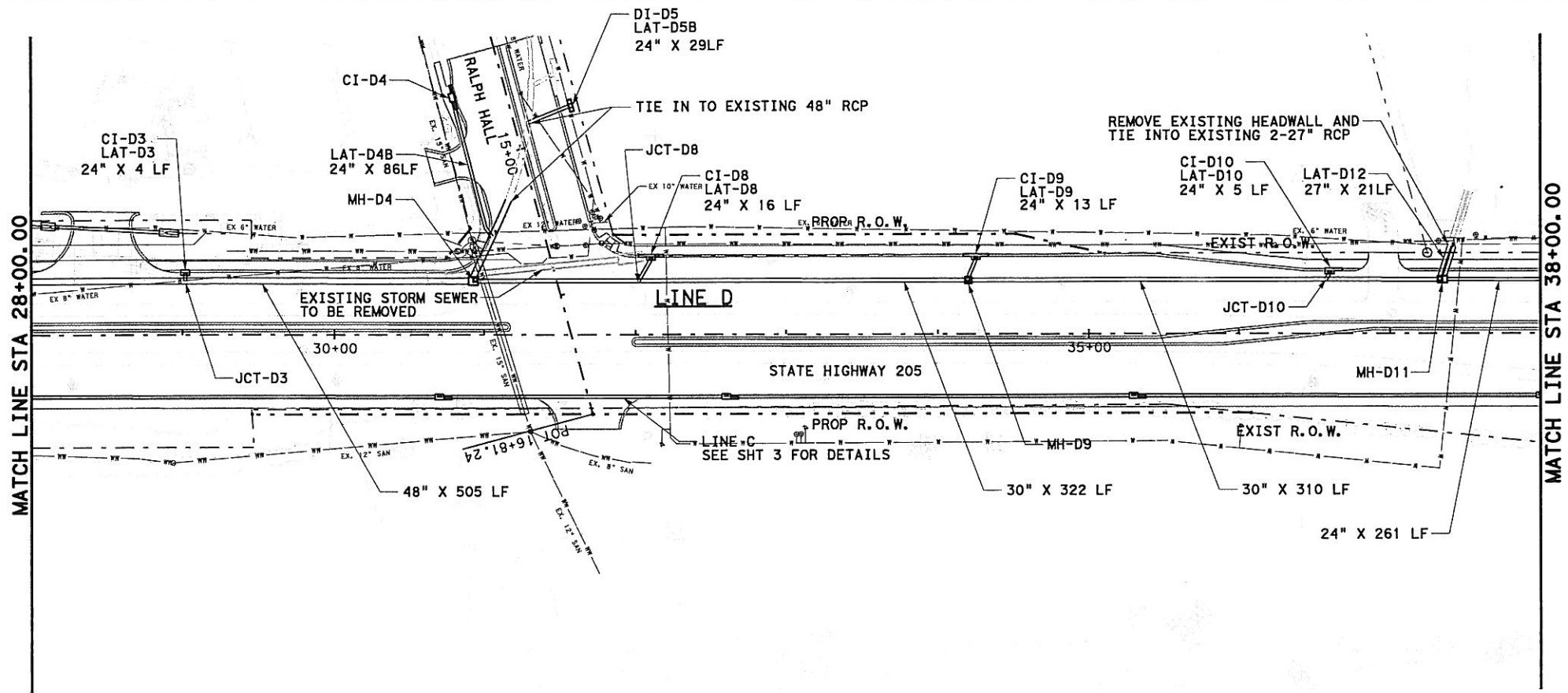
SH 205

SOUTHBOUND DRAINAGE
STORM SEWER PLAN & PROFILE
STA 18+00 TO 28+00

SHEET 19 OF 57

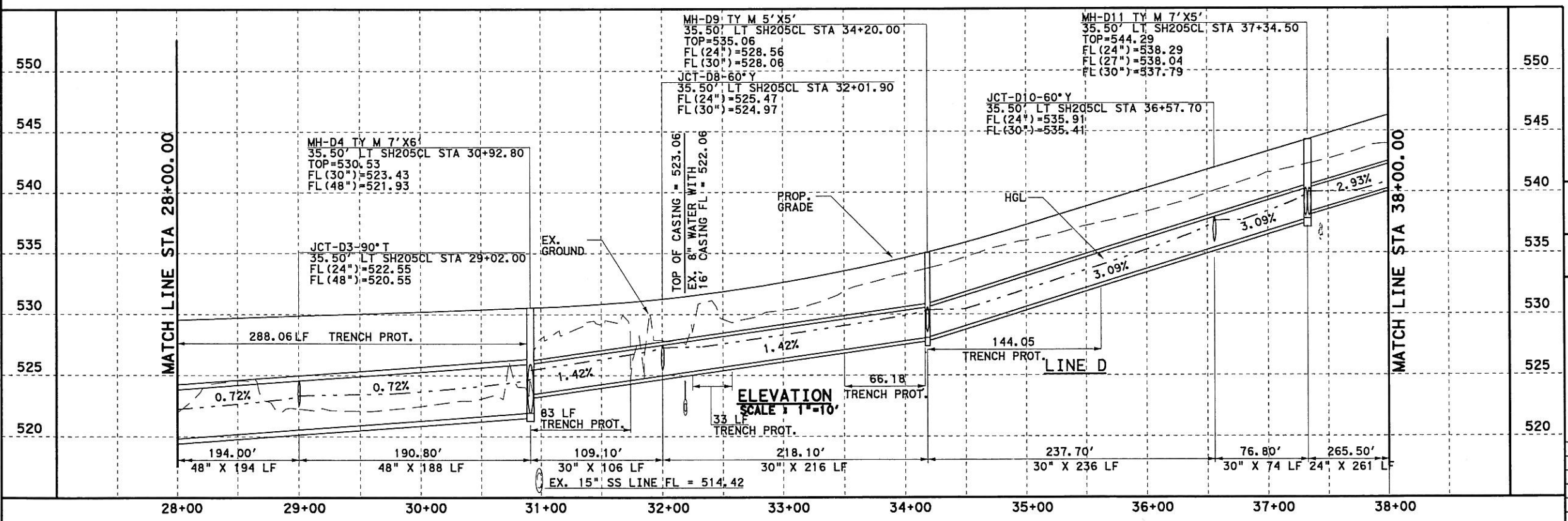
FED. RD. DIST. NO.	FEDERAL AID PROJECT NO.	HIGHWAY NO.
6	(SEE TITLE SHEET)	SH 205
STATE	DIST.	COUNTY
TEXAS	DALLAS	ROCKWALL
CONT.	SECT.	JOB
0451	01	032, ETC
		SHEET NO.
		419

DGN:G:\JOBS\2451C-SH205\Drainage\2451csp503.dgn, ON:10-11, 13-623
 3/25/2006 Plotted 25-MAR-2006 02:58

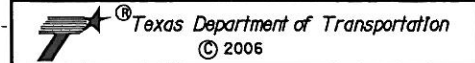


- GENERAL NOTES**
1. CURB INLETS STATION AND OFFSET ARE MEASURED TO THE MIDPOINT OF THE FACE OF MAIN INLET. GRATE INLETS STATION AND OFFSET ARE MEASURED TO THE CENTER OF THE INLET.
 2. JUNCTION BOX STATION AND OFFSET ARE MEASURED TO THE CENTER OF THE JUNCTION BOX.
 3. ALL PIPE ARE CLASS III UNLESS OTHERWISE NOTED.

PLAN
SCALE 1"=100'



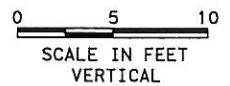
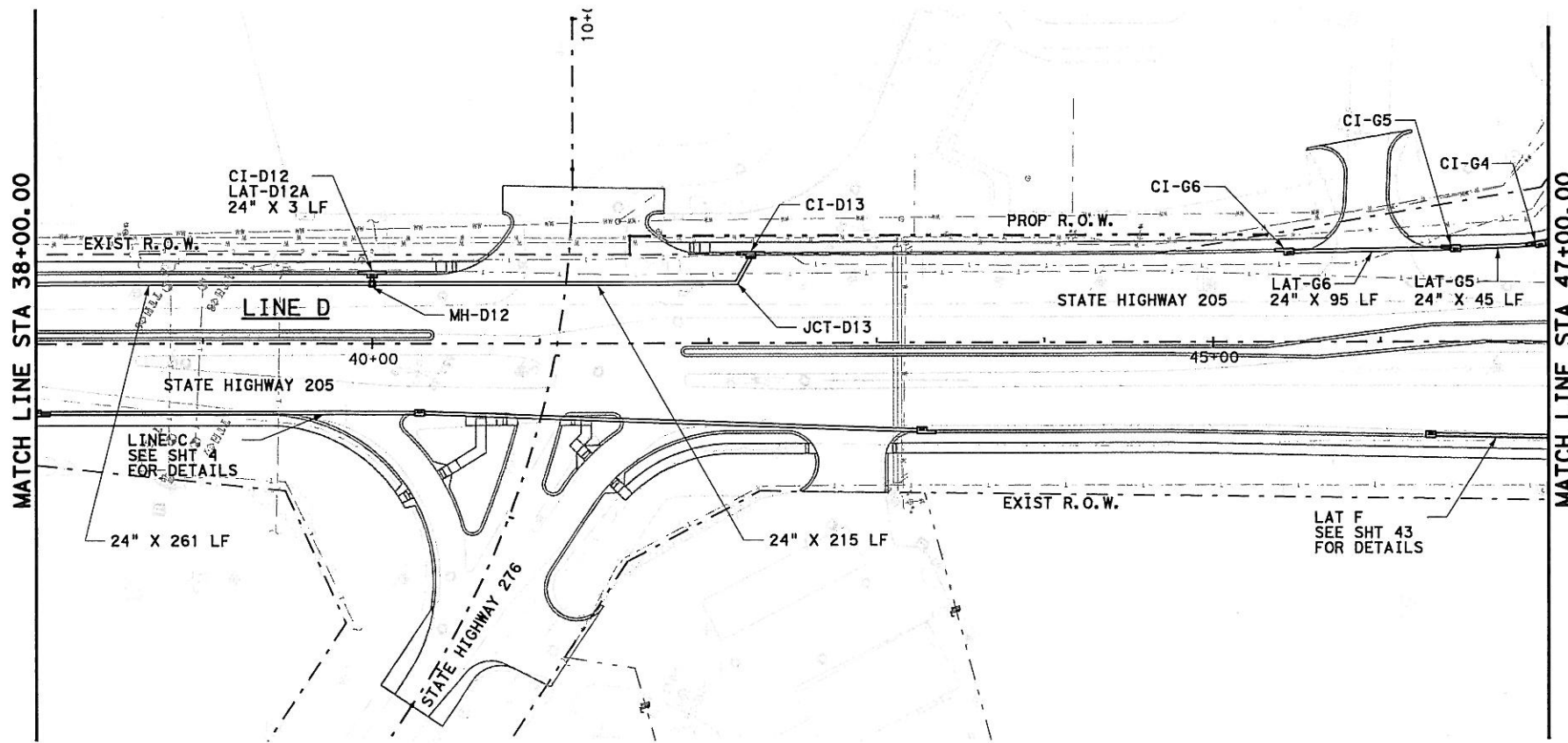
Parsons Brinckerhoff Quade & Douglas, Inc.
2777 Stemmons Freeway
Suite 1333
Dallas, TX 75207



SH 205
SOUTHBOUND DRAINAGE
STORM SEWER PLAN & PROFILE
STA 28+00 TO 38+00
SHEET 20 OF 57

FED. RD. DIV. NO.	FEDERAL AID PROJECT NO.	HIGHWAY NO.
6	(SEE TITLE SHEET)	SH 205
STATE	DIST.	COUNTY
TEXAS	DALLAS	ROCKWALL
CONT.	SECT.	JOB
0451	01	032, ETC
		SHEET NO.
		420

DGN: G:\JOBS\22451C-SH205\Drawings\2451cdps04.dgn, ON: 10-11, 13-621
 3/25/2006 Plotted 25-MAR-2006 02:58



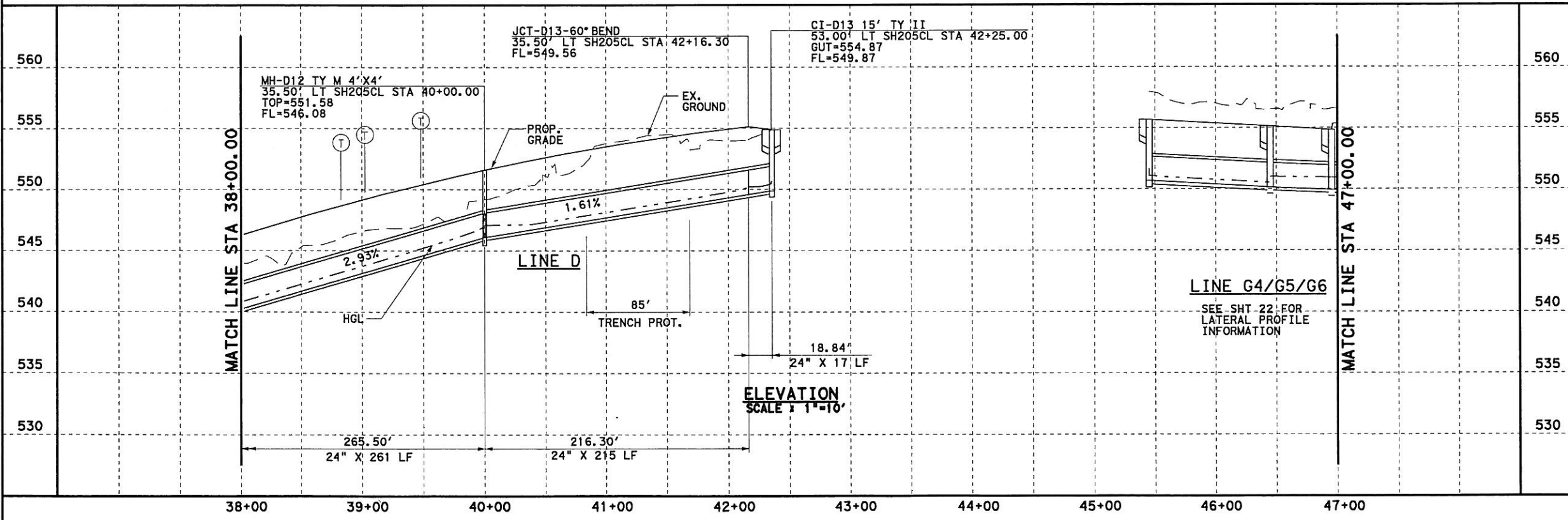
GENERAL NOTES

1. CURB INLETS STATION AND OFFSET ARE MEASURED TO THE MIDPOINT OF THE FACE OF MAIN INLET. GRATE INLETS STATION AND OFFSET ARE MEASURED TO THE CENTER OF THE INLET.
2. JUNCTION BOX STATION AND OFFSET ARE MEASURED TO THE CENTER OF THE JUNCTION BOX.
3. ALL PIPE ARE CLASS III UNLESS OTHERWISE NOTED.

LEGENDS

- EX. GAS LINE CROSSING
ELEVATION UNKNOWN
- EX. SW BELL CABLE CROSSING
ELEVATION UNKNOWN

PLAN
SCALE 1"=100'



ELEVATION
SCALE 1"=10'



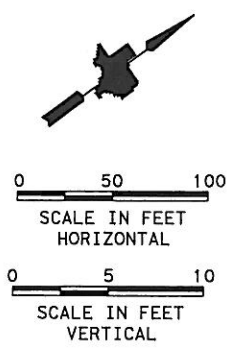
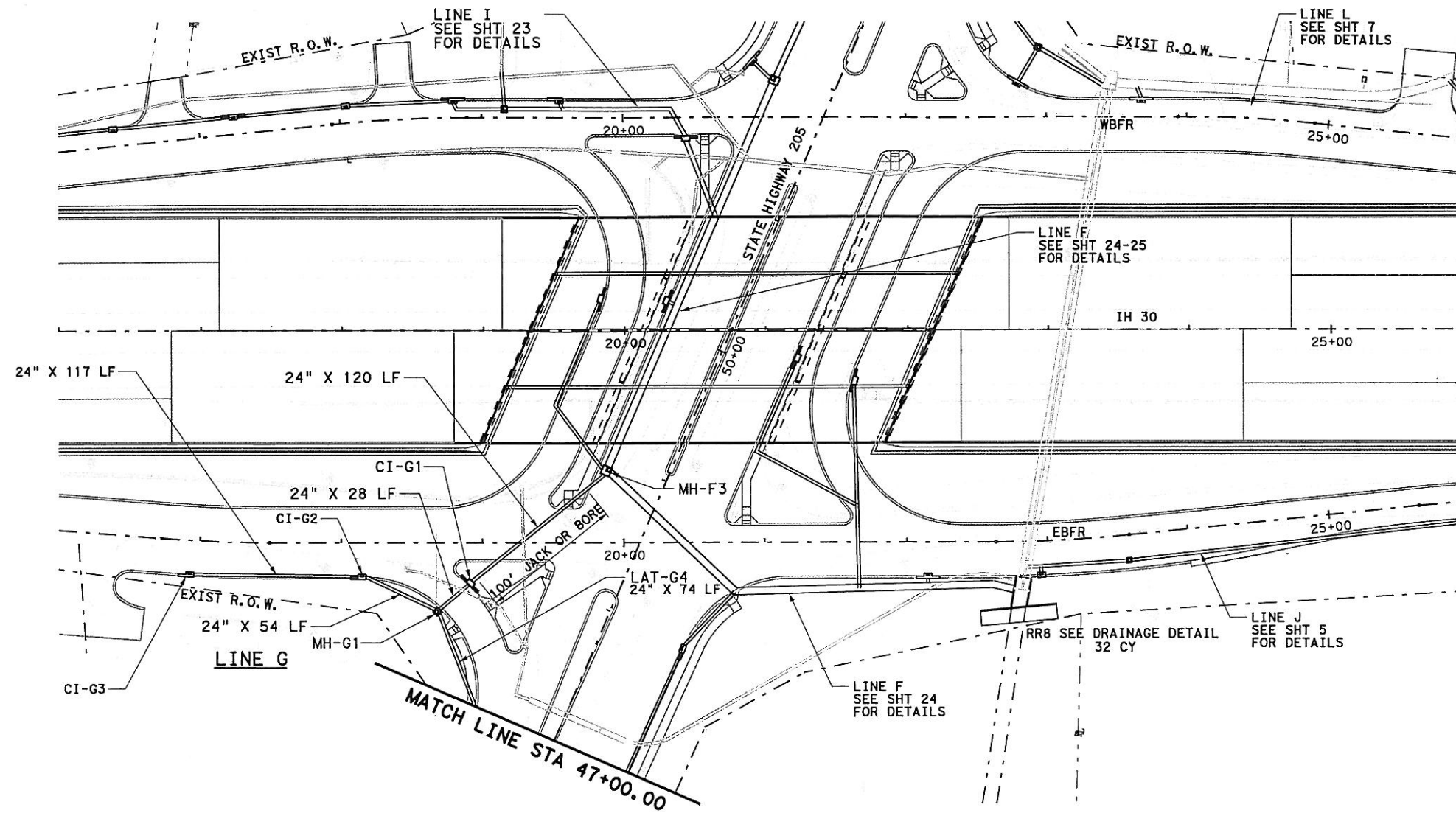
PB Parsons Brinckerhoff Quade & Douglas, Inc.
2777 Stemmons Freeway
Suite 1333
Dallas, TX 75207



SH 205
SOUTHBOUND DRAINAGE
STORM SEWER PLAN & PROFILE
STA 38+00 TO 47+00
SHEET 21 OF 57

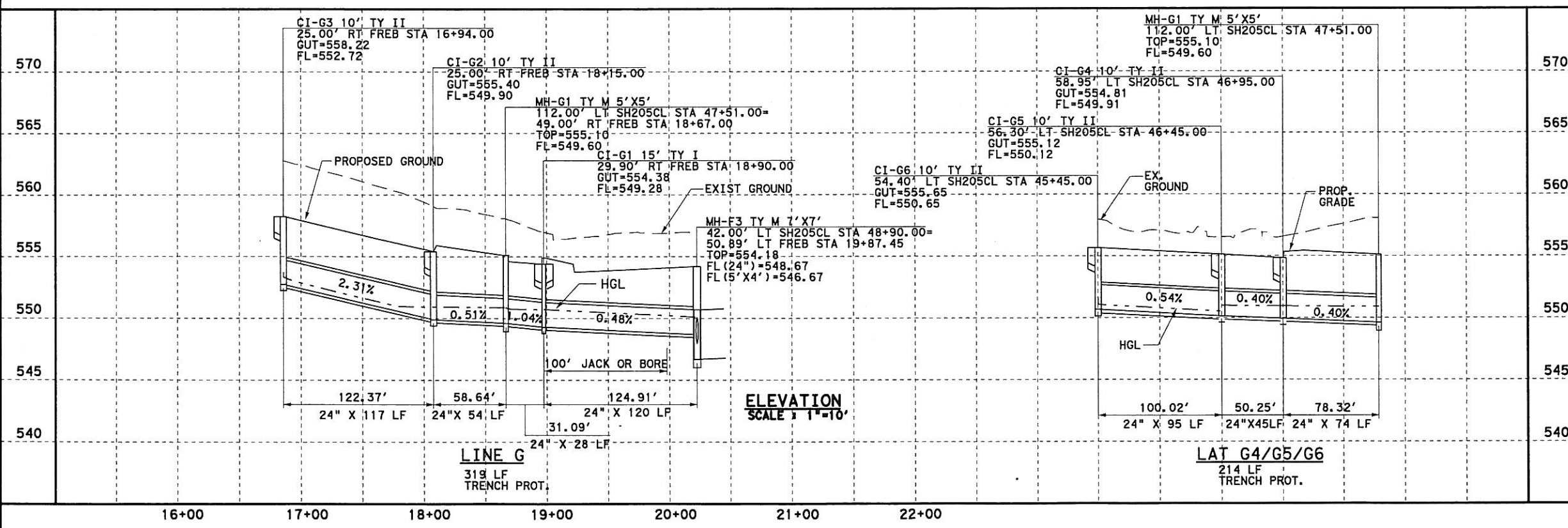
FED. RD. DIV. NO.	FEDERAL AID PROJECT NO.	HIGHWAY NO.
6	(SEE TITLE SHEET)	SH 205
STATE	DIST.	COUNTY
TEXAS	DALLAS	ROCKWALL
CONT.	SECT.	JOB
0451	01	032, ETC
SHEET NO.		
421		

DGN=C:\JOBS\22451\IC-SH205\Drawings\2451\edps05.dgn, ON=C0-11, 13-621
 3/25/2006 Plotted 25-MAR-2006 02:58



- GENERAL NOTES**
1. CURB INLETS STATION AND OFFSET ARE MEASURED TO THE MIDPOINT OF THE FACE OF MAIN INLET. GRATE INLETS STATION AND OFFSET ARE MEASURED TO THE CENTER OF THE INLET.
 2. JUNCTION BOX STATION AND OFFSET ARE MEASURED TO THE CENTER OF THE JUNCTION BOX.
 3. ALL PIPE ARE CLASS III UNLESS OTHERWISE NOTED.

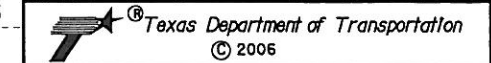
PLAN
SCALE 1"=100'



ELEVATION
SCALE 1"=10'



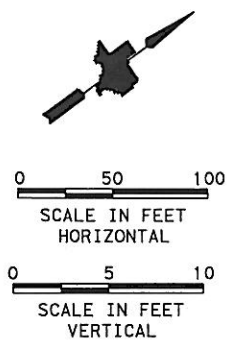
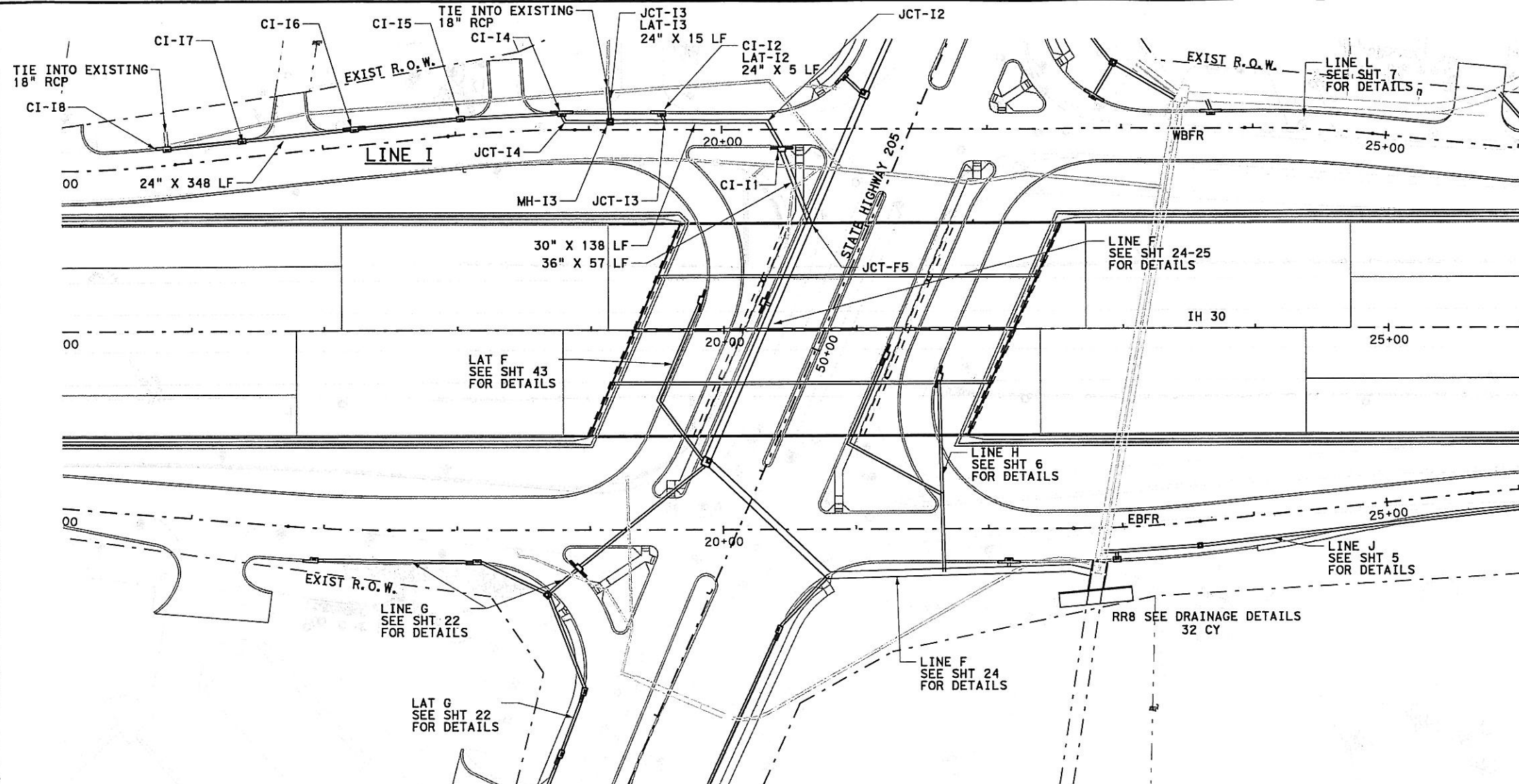
PB Parsons Brinckerhoff Quade & Douglas, Inc.
2777 Stemmons Freeway
Suite 1333
Dallas, TX 75207



SH 205
SOUTHBOUND DRAINAGE
STORM SEWER PLAN & PROFILE
I-30 EBFR STA 16+00 TO 26+00
SHEET 22 OF 57

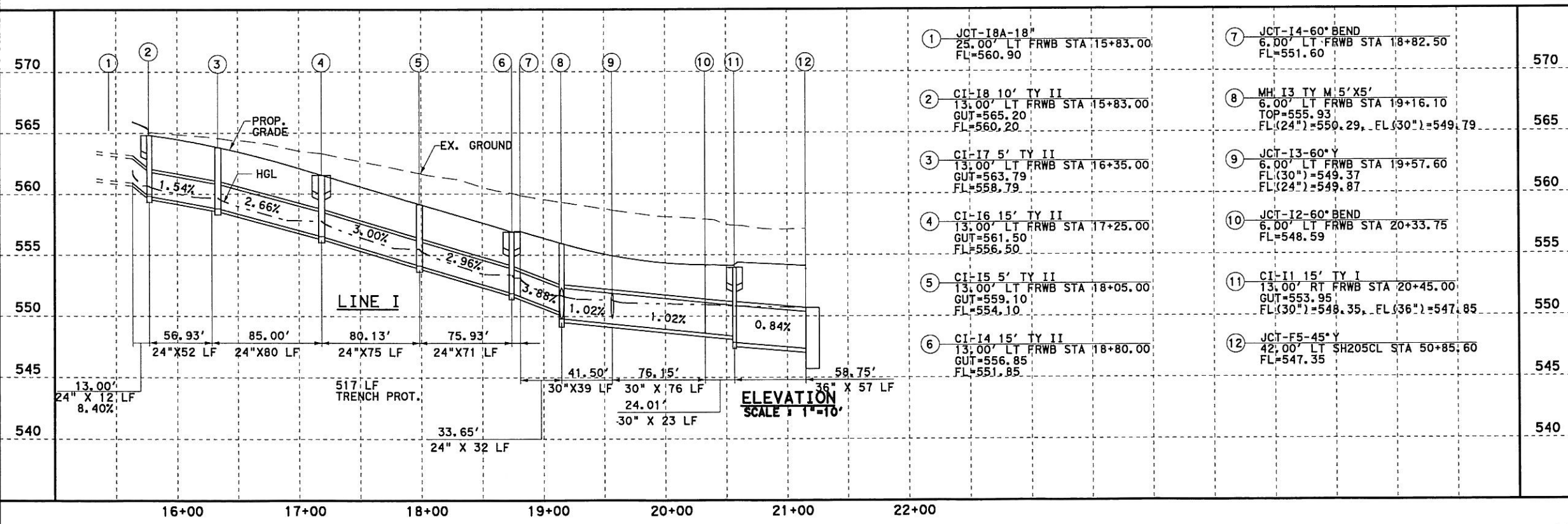
FED. RD. DIV. NO.	FEDERAL AID PROJECT NO.	HIGHWAY NO.
6	(SEE TITLE SHEET)	SH 205
STATE	DIST.	COUNTY
TEXAS	DALLAS	ROCKWALL
CONT.	SECT.	JOB
0451	01	032, ETC
		SHEET NO.
		422

DGN=C:\JOBS\22451C-SH205\Drawings\2451cdps06a.dgn, ON=10-621
 3/25/2006 Plotted 25-MAR-2006 02:58



- GENERAL NOTES**
1. CURB INLETS STATION AND OFFSET ARE MEASURED TO THE MIDPOINT OF THE FACE OF MAIN INLET. GRATE INLETS STATION AND OFFSET ARE MEASURED TO THE CENTER OF THE INLET.
 2. JUNCTION BOX STATION AND OFFSET ARE MEASURED TO THE CENTER OF THE JUNCTION BOX.
 3. ALL PIPE ARE CLASS III UNLESS OTHERWISE NOTED.

PLAN
SCALE: 1"=100'



ELEVATION
SCALE: 1"=10'



PB Parsons Brinckerhoff Quade & Douglas, Inc.
2777 Stemmons Freeway
Suite 1333
Dallas, TX 75207

Texas Department of Transportation
© 2006

SH 205

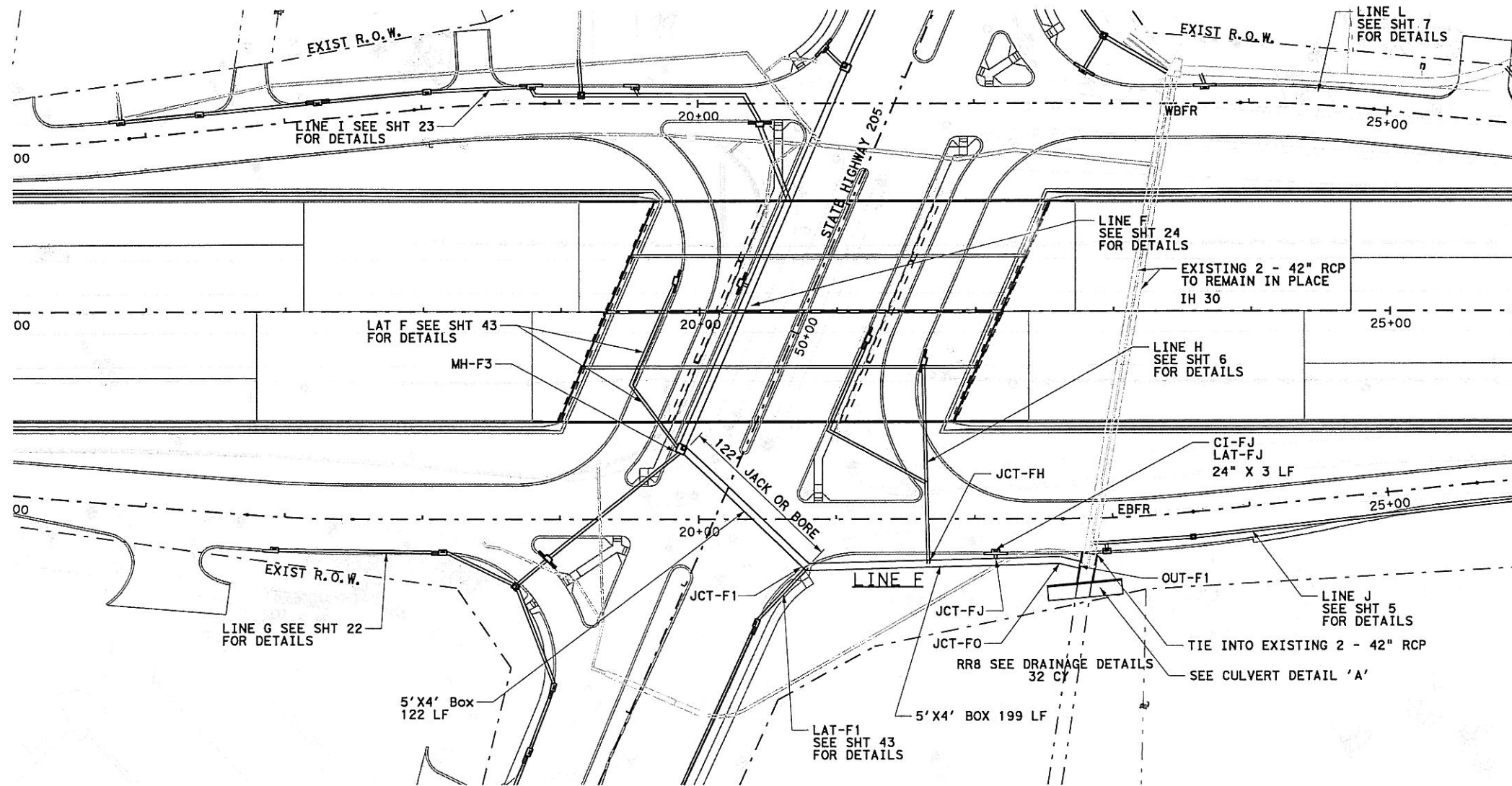
SOUTHBOUND DRAINAGE

STORM SEWER PLAN & PROFILE
I-30 EBFR STA 16+00 TO 26+00

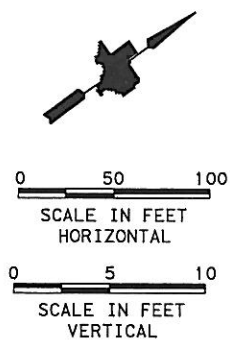
SHEET 23 OF 57

FED. RD. DIV. NO.	FEDERAL AID PROJECT NO.	HIGHWAY NO.
6	(SEE TITLE SHEET)	SH 205
STATE	DIST.	COUNTY
TEXAS	DALLAS	ROCKWALL
CONT.	SECT.	JOB
0451	01	032, ETC
SHEET NO.		
423		

DGN: g:\JOBS\22451C-SH205-Dr\Inage\2451cdps06B.dgn, ON: 10-623
 3/25/2006 Plotted 25-MAR-2006 02:58

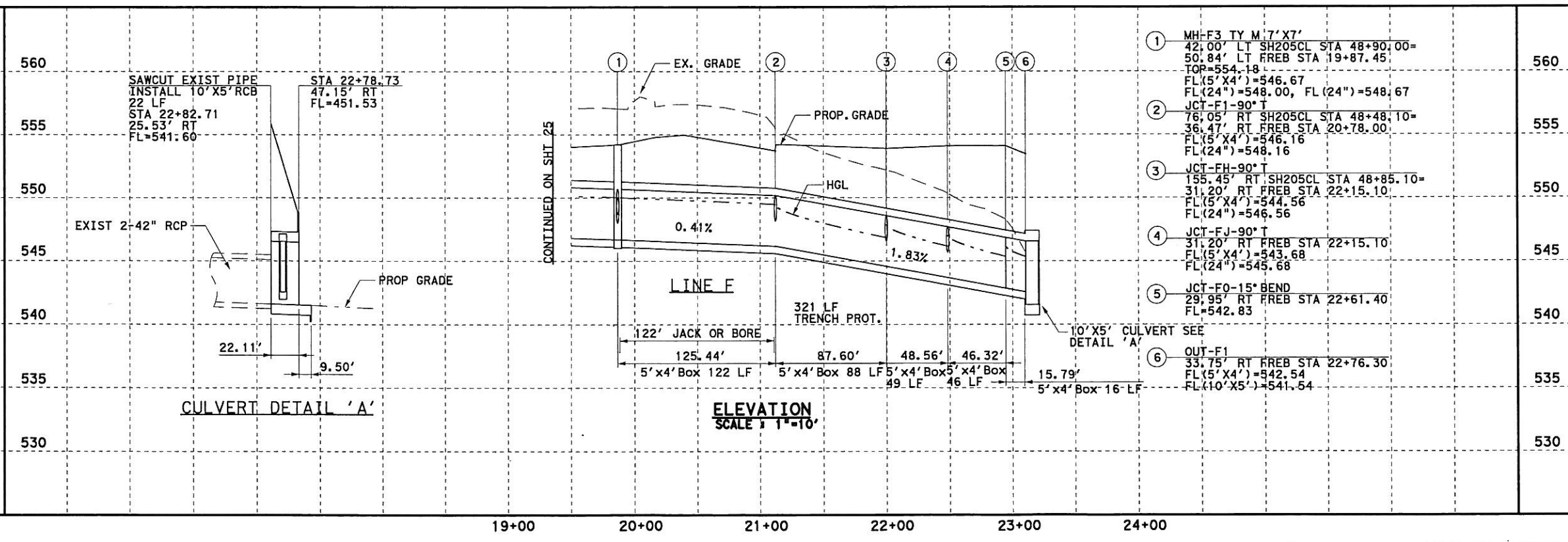


PLAN
SCALE 1"=100'



GENERAL NOTES

1. CURB INLETS STATION AND OFFSET ARE MEASURED TO THE MIDPOINT OF THE FACE OF MAIN INLET. GRATE INLETS STATION AND OFFSET ARE MEASURED TO THE CENTER OF THE INLET.
2. JUNCTION BOX STATION AND OFFSET ARE MEASURED TO THE CENTER OF THE JUNCTION BOX.
3. ALL PIPE ARE CLASS III UNLESS OTHERWISE NOTED.



ELEVATION
SCALE 1"=10'

SAWCUT EXIST PIPE
INSTALL 10'X5'RCB
22 LF
STA 22+82.71
25.53' RT
FL=541.60

STA 22+78.73
47.15' RT
FL=451.53

EXIST 2-42" RCP

PROP GRADE

CULVERT DETAIL 'A'

CONTINUED ON SHT 25

- ① MH-F3 TY M 7'X7'
42.00' LT SH205CL STA 48+90.00=
50.84' LT FREQ STA 19+87.45'
TOP=554.18
FL(5'X4')=546.67
FL(24")=548.00, FL(24")=548.67
- ② JCT-F1-90° T
76.05' RT SH205CL STA 48+48.10=
36.47' RT FREQ STA 20+78.00'
FL(5'X4')=546.16
FL(24")=548.16
- ③ JCT-FH-90° T
155.45' RT SH205CL STA 48+85.10=
31.20' RT FREQ STA 22+15.10'
FL(5'X4')=544.56
FL(24")=546.56
- ④ JCT-FJ-90° T
31.20' RT FREQ STA 22+15.10'
FL(5'X4')=543.68
FL(24")=545.68
- ⑤ JCT-FO-15° BEND
29.95' RT FREQ STA 22+61.40
FL=542.83
- ⑥ OUT-F1
33.75' RT FREQ STA 22+76.30'
FL(5'X4')=542.54
FL(10'X5')=541.54



PB Parsons Brinckerhoff Quade & Douglas, Inc.
2777 Stemmons Freeway
Suite 1333
Dallas, TX 75207

Texas Department of Transportation
© 2006

SH 205

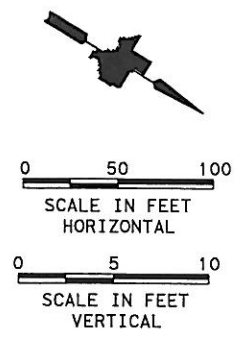
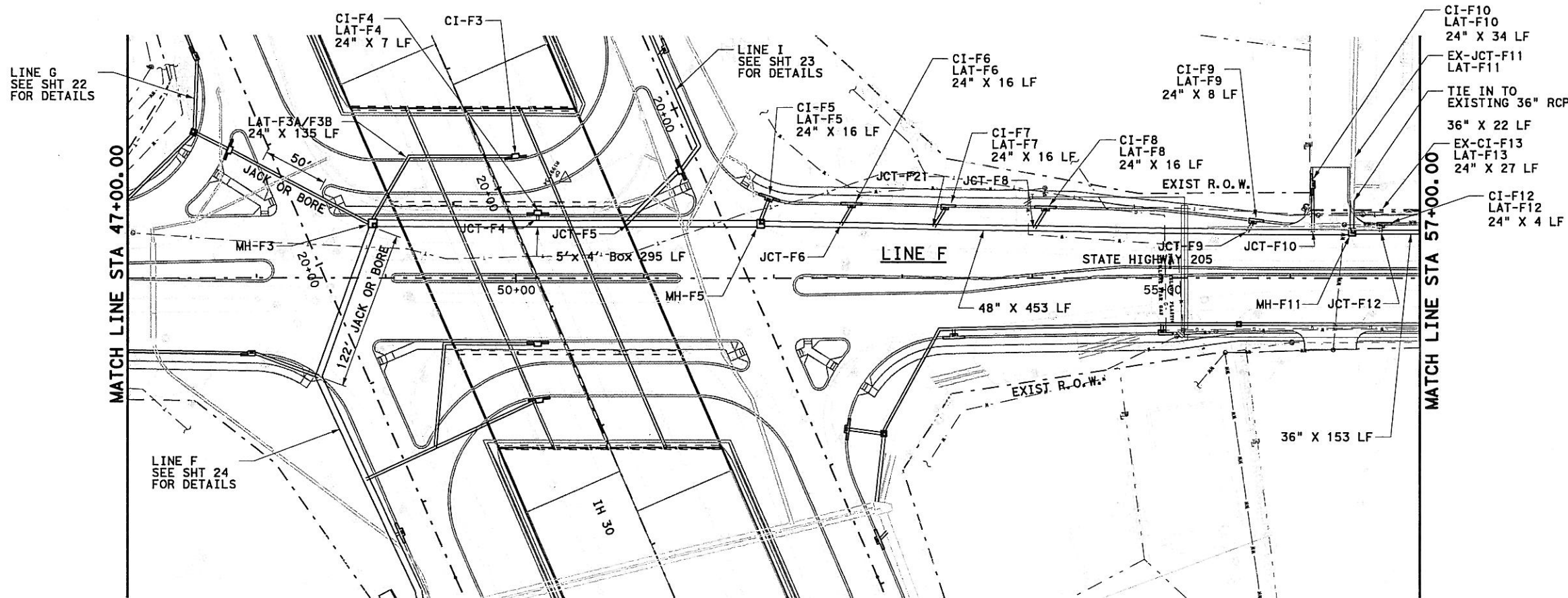
SOUTHBOUND DRAINAGE

STORM SEWER PLAN & PROFILE
I-30 EBFR STA 16+00 TO 26+00

SHEET 24 OF 57

FED. RD. DIV. NO.	FEDERAL AID PROJECT NO.	HIGHWAY NO.
6	(SEE TITLE SHEET)	SH 205
STATE	DIST.	COUNTY
TEXAS	DALLAS	ROCKWALL
CONT.	SECT.	JOB
0451	01	032, ETC
		SHEET NO.
		424

DGN:G:\JOBS\22451C-SH205\Drawings\2451cads06c.dgn, ON=10-821
 3/25/2006 Plot: 25-MAR-2006 02:59

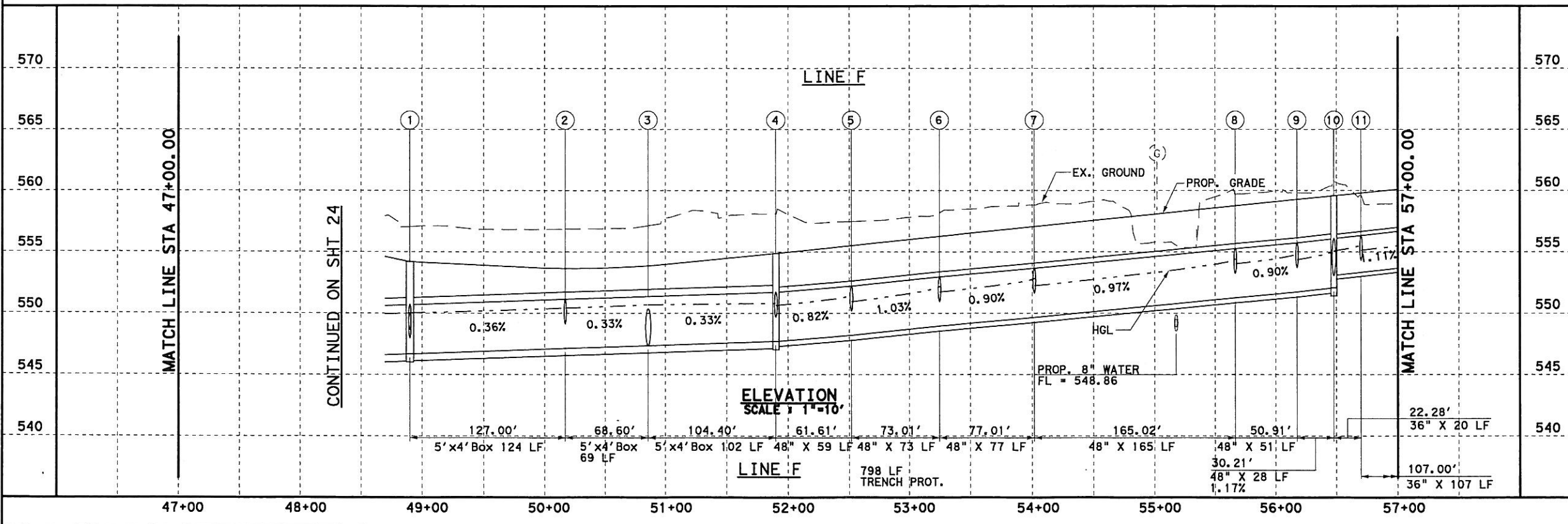


- GENERAL NOTES**
1. CURB INLETS STATION AND OFFSET ARE MEASURED TO THE MIDPOINT OF THE FACE OF MAIN INLET. GRATE INLETS STATION AND OFFSET ARE MEASURED TO THE CENTER OF THE INLET.
 2. JUNCTION BOX STATION AND OFFSET ARE MEASURED TO THE CENTER OF THE JUNCTION BOX.
 3. ALL PIPE ARE CLASS III UNLESS OTHERWISE NOTED.

- LEGENDS**
- (G) EX. GAS LINE CROSSING ELEVATION UNKNOWN
 - (T) EX. SW BELL CABLE CROSSING ELEVATION UNKNOWN

- | | | | |
|--|--|--|---|
| ① MH-F3 TY M 7'X7'
42.00' LT SH205CL STA 48+90.00
TOP=554.18
FL (5'X4')=546.67 | ④ MH-F5 TY M 7'X6'
42.00' LT SH205CL STA 51+90.00
TOP=554.85
FL (5'X4')=547.69
FL (24")=549.69 | ⑦ JCT-F8-60°Y
38.20' LT SH205CL STA 54+01.60
FL (48")=549.65
FL (24")=551.65 | ⑩ MH F11 TY M 6'X6'
35.50' LT SH205CL STA 56+47.72
TOP=559.56
FL (48")=552.06
FL (36")=553.06 |
| ② JCT-F4 90° T
42.00' LT SH205CL STA 50+17.00
FL (5'X4')=547.12
FL (24")=549.12 | ⑤ JCT-F6-60°Y
41.00' LT SH205CL STA 52+51.60
FL (48")=548.20
FL (24")=550.20 | ⑧ JCT-F9-90°T
35.50' LT SH205CL STA 55+66.60
FL (48")=551.25
FL (24")=553.25 | ⑪ JCT-F12-90°T
35.50' LT SH205CL STA 56+70.00
FL (36")=553.31
FL (24")=554.31 |
| ③ JCT-F5-45°Y
42.00' LT SH205CL STA 50+85.60
FL (5'X4')=547.35
FL (36")=547.35 | ⑥ JCT-F21-60°Y
39.50' LT SH205CL STA 53+24.60
FL (48")=548.95
FL (24")=550.95 | ⑨ JCT-F10-90°T
35.50' LT SH205CL STA 56+17.51
FL (48")=551.71
FL (24")=553.71 | |

PLAN
SCALE 1"=100'



ELEVATION
SCALE 1"=10'

LINE F
798 LF TRENCH PROT.



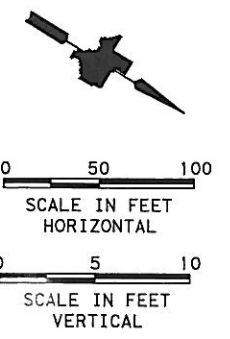
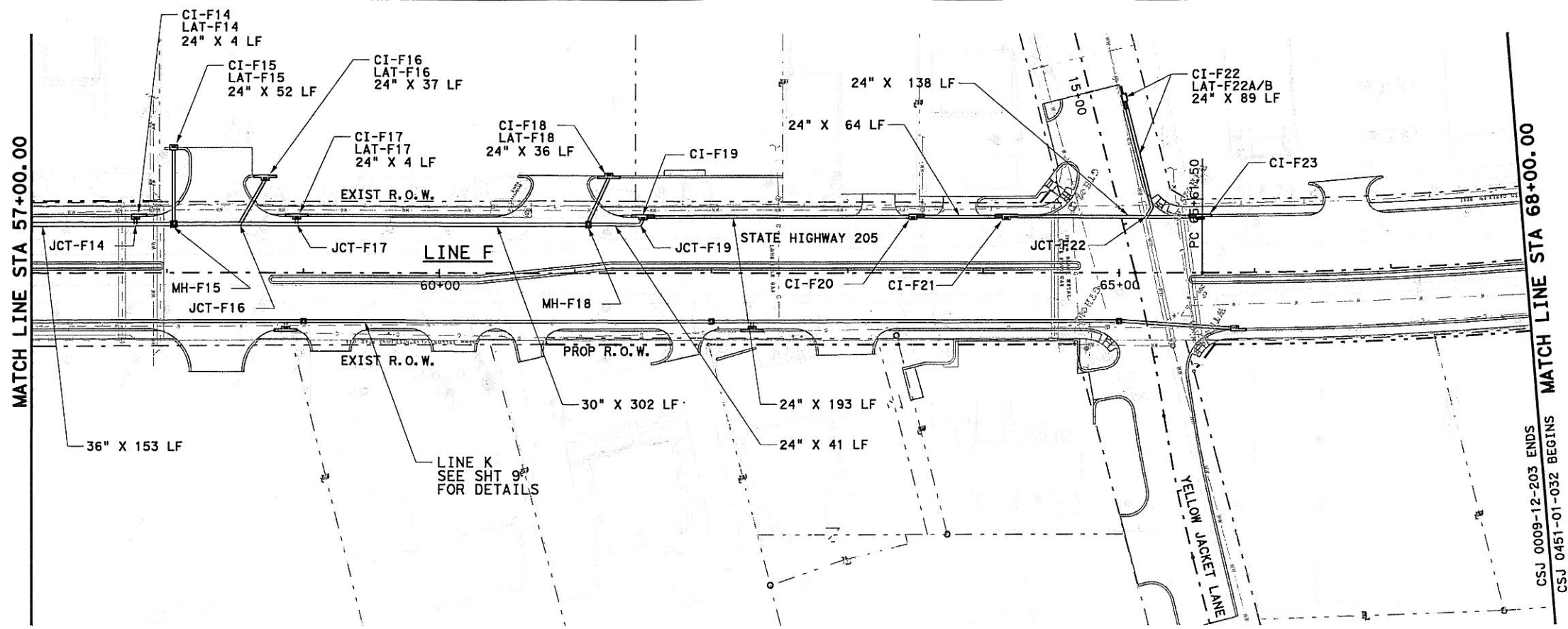
Parsons Brinckerhoff Quade & Douglas, Inc.
2777 Stemmons Freeway
Suite 1333
Dallas, TX 75207

Texas Department of Transportation
© 2006

SH 205
SOUTHBOUND DRAINAGE
STORM SEWER PLAN & PROFILE
STA 47+00 TO 57+00
SHEET 25 OF 57

FED. RD. DIV. NO.	FEDERAL AID PROJECT NO.	HIGHWAY NO.
6	(SEE TITLE SHEET)	SH 205
STATE	DIST.	COUNTY
TEXAS	DALLAS	ROCKWALL
CONT.	SECT.	JOB
0451	01	032, ETC
		SHEET NO.
		425

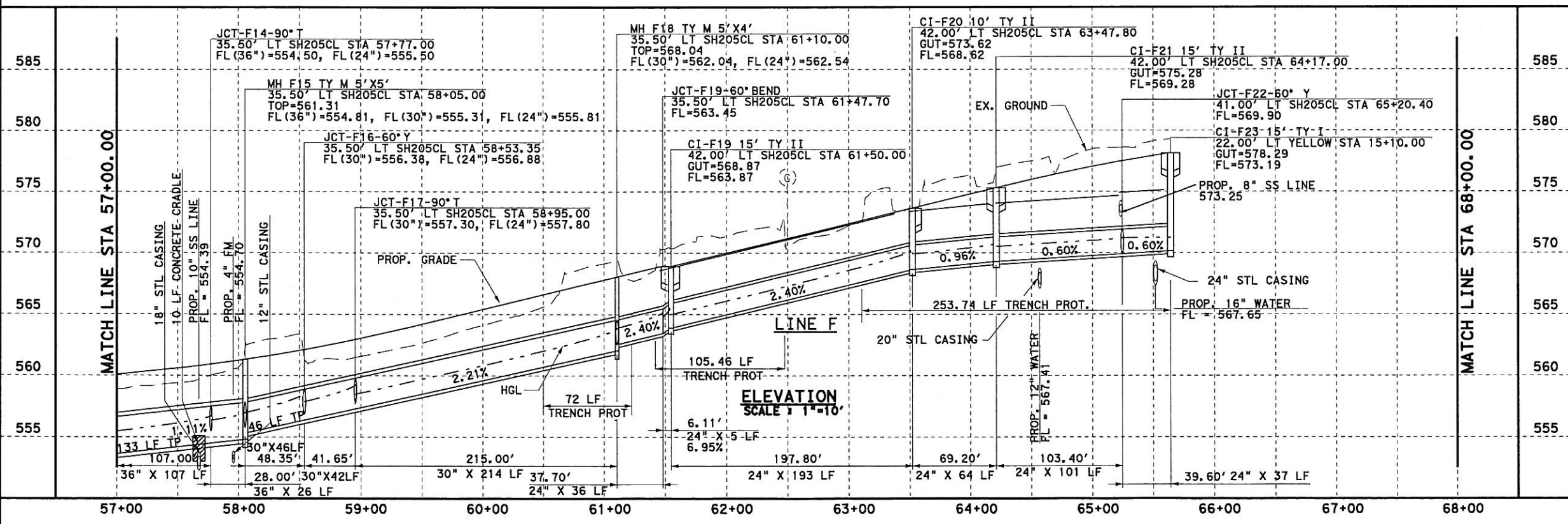
DGN#G:\JOBS\22451C-SH205\Drawings\2451cdp506.dgn, ON=CO-11, 13-621
 3/25/2006 Plotted 25-MAR-2006 02:59



- GENERAL NOTES**
- CURB INLETS STATION AND OFFSET ARE MEASURED TO THE MIDPOINT OF THE FACE OF MAIN INLET. GRATE INLETS STATION AND OFFSET ARE MEASURED TO THE CENTER OF THE INLET.
 - JUNCTION BOX STATION AND OFFSET ARE MEASURED TO THE CENTER OF THE JUNCTION BOX.
 - ALL PIPE ARE CLASS III UNLESS OTHERWISE NOTED.

- LEGENDS**
- (G) EX. GAS LINE CROSSING ELEVATION UNKNOWN
 - (T) EX. SW BELL CABLE CROSSING ELEVATION UNKNOWN

PLAN
SCALE 1"=100'



ELEVATION
SCALE 1"=10'



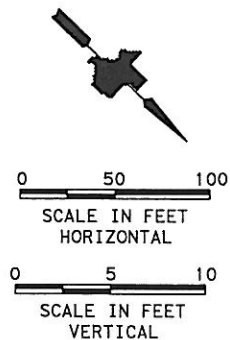
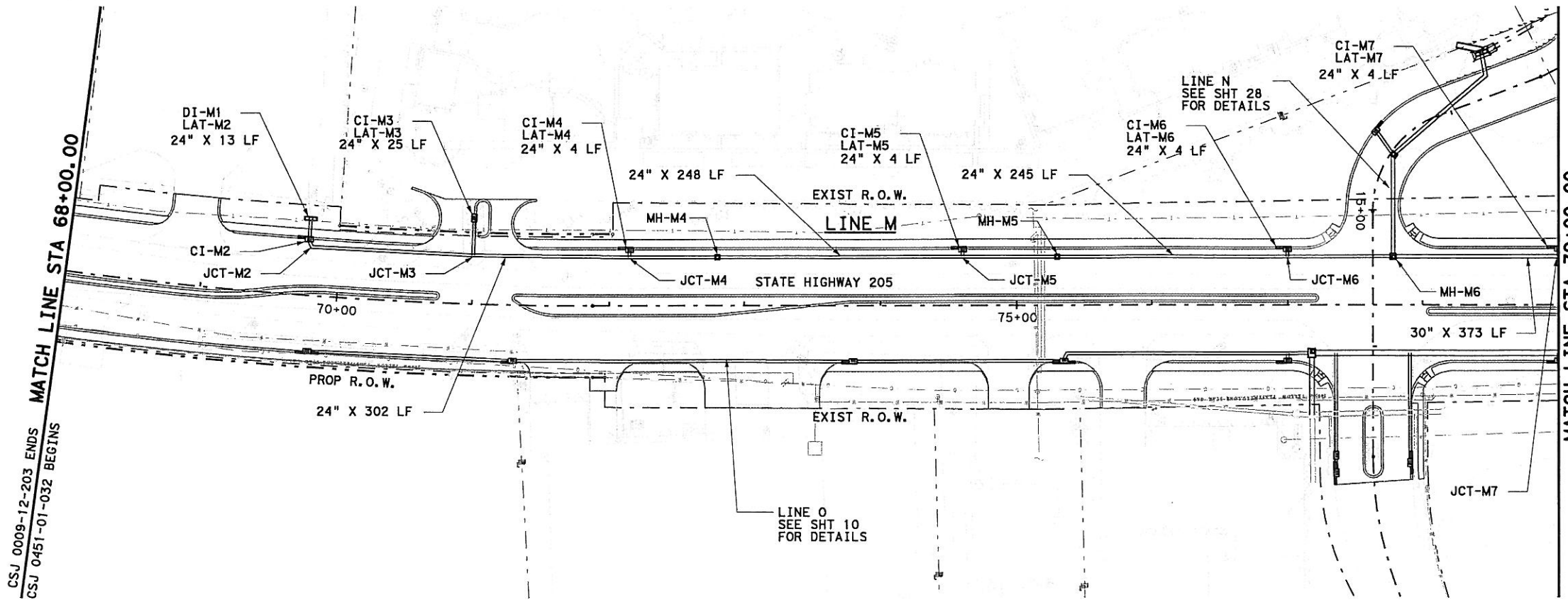
PB Parsons Brinckerhoff Quade & Douglas, Inc.
2777 Stemmons Freeway
Suite 1333
Dallas, TX 75207



SH 205
SOUTHBOUND DRAINAGE
STORM SEWER PLAN & PROFILE
STA 57+00 TO 68+00
SHEET 26 OF 57

FED. RD. DIV. NO.	FEDERAL AID PROJECT NO.	HIGHWAY NO.
6	(SEE TITLE SHEET)	SH 205
STATE	DIST.	COUNTY
TEXAS	DALLAS	ROCKWALL
CONT.	SECT.	JOB
0451	01	032, ETC
		SHEET NO.
		426

DGN: G:\JOBS\22451C-SH205\Drawings\2451\odp507.dgn, ON: 10-11, 13-623
 3/25/2006 Plotted 25-MAR-2006 02:59



- GENERAL NOTES**
- CURB INLETS STATION AND OFFSET ARE MEASURED TO THE MIDPOINT OF THE FACE OF MAIN INLET. GRATE INLETS STATION AND OFFSET ARE MEASURED TO THE CENTER OF THE INLET.
 - JUNCTION BOX STATION AND OFFSET ARE MEASURED TO THE CENTER OF THE JUNCTION BOX.
 - ALL PIPE ARE CLASS III UNLESS OTHERWISE NOTED.

- LEGENDS**
- (G) EX. GAS LINE CROSSING ELEVATION UNKNOWN
 - (T) EX. SW BELL CABLE CROSSING ELEVATION UNKNOWN

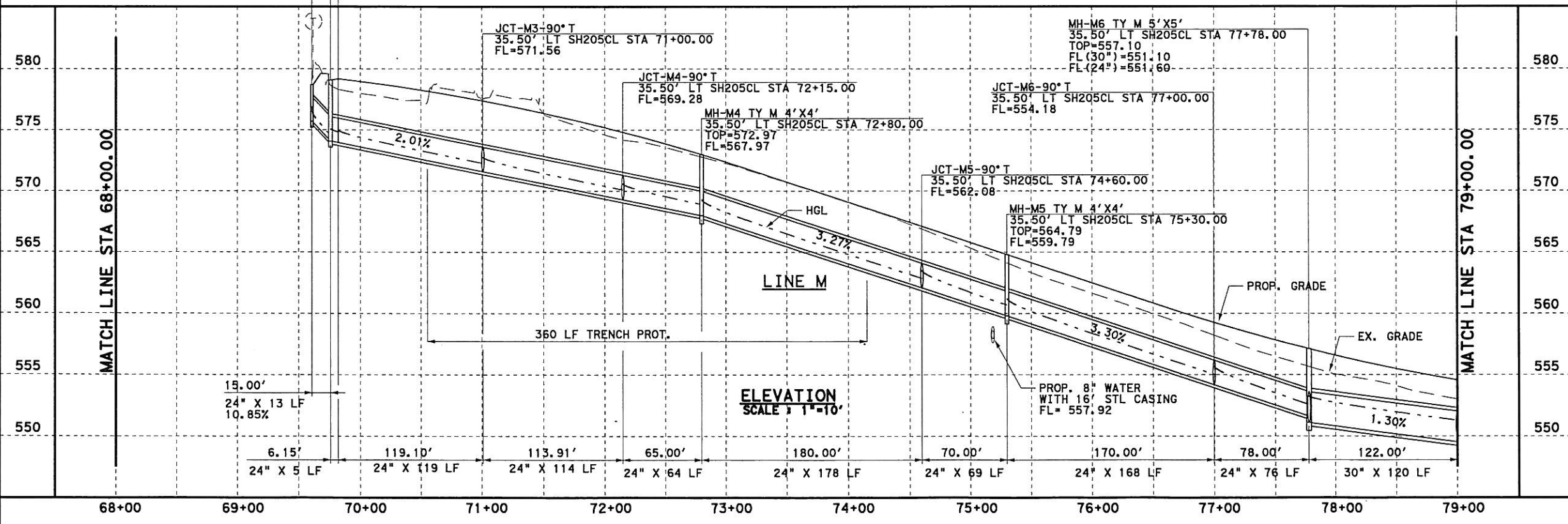
JCT-M2-60° BEND
 35.50' LT SH205CL STA 69+79.40
 FL=573.95

CI-M2 10' TY II
 42.00' LT SH205CL STA 69+77.00
 GUT=579.07
 FL=574.07

DI-M1 TY C 1-GRATE
 56.00' LT SH205CL STA 69+77.00
 TOP=578.70
 FL=575.70

JCT-M7-90° T
 35.50' LT SH205CL STA 79+00.00
 FL=549.52

PLAN
 SCALE 1"=100'



ELEVATION
 SCALE 1"=10'



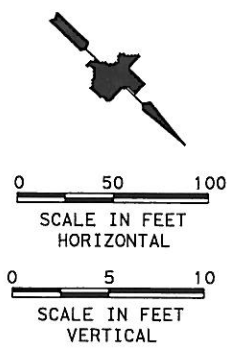
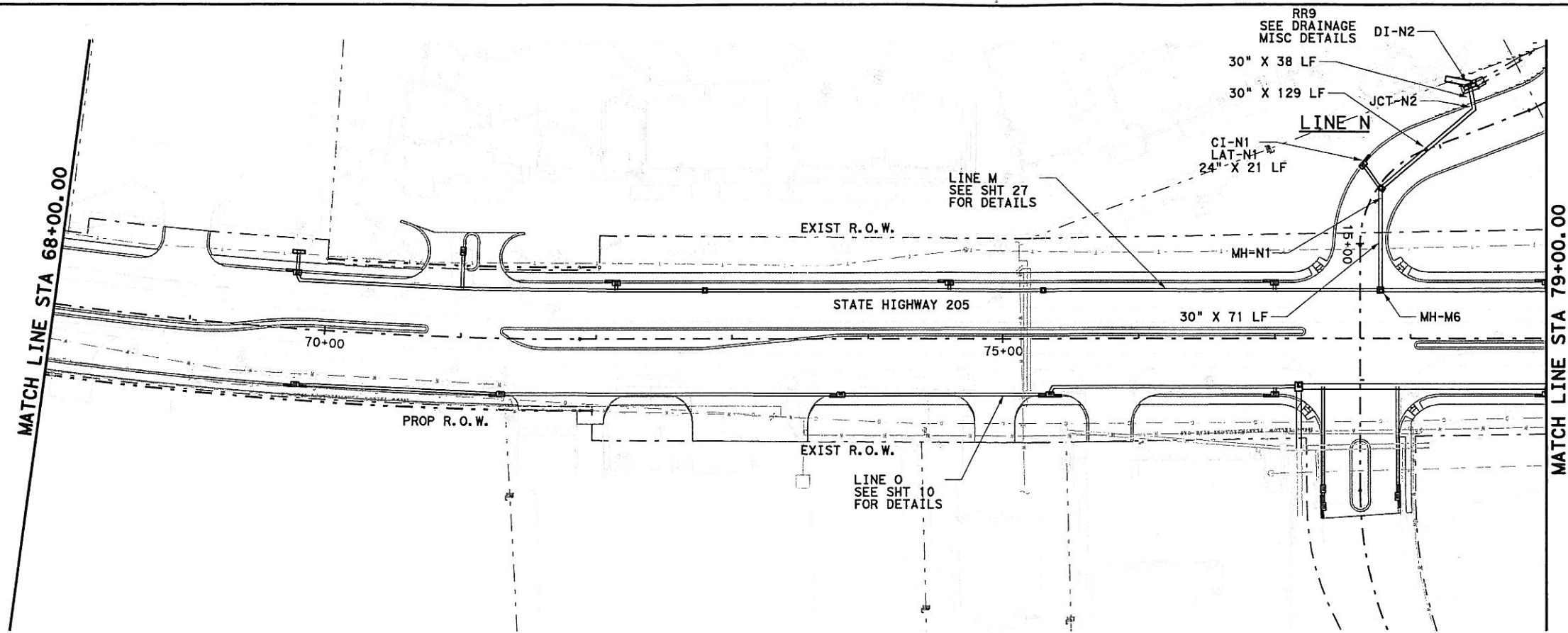
Parsons Brinckerhoff Quade & Douglas, Inc.
 2777 Stemmons Freeway
 Suite 1333
 Dallas, TX 75207

Texas Department of Transportation
 © 2006

SH 205
SOUTHBOUND DRAINAGE
 STORM SEWER PLAN & PROFILE
 STA 68+00 TO 79+00
 SHEET 27 OF 57

FED. RD. DIV. NO.	FEDERAL AID PROJECT NO.	HIGHWAY NO.
6	(SEE TITLE SHEET)	SH 205
STATE	DIST.	COUNTY
TEXAS	DALLAS	ROCKWALL
CONT.	SECT.	JOB
0451	01	032, ETC
		SHEET NO.
		427

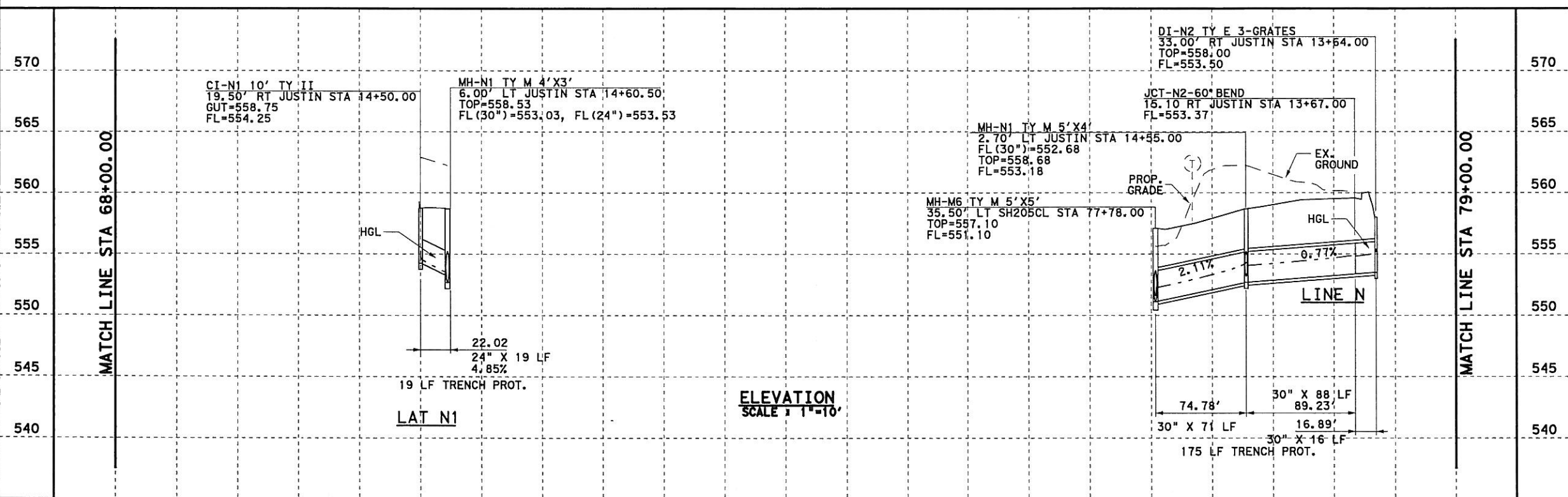
DGN:G:\JOBS\22451C-SH205\Drawings\2451c\sp508.dgn, ON=10-11, 13-623
 3/25/2006 Plotted 25-MAR-2006 02:59



- GENERAL NOTES**
1. CURB INLETS STATION AND OFFSET ARE MEASURED TO THE MIDPOINT OF THE FACE OF MAIN INLET. GRATE INLETS STATION AND OFFSET ARE MEASURED TO THE CENTER OF THE INLET.
 2. JUNCTION BOX STATION AND OFFSET ARE MEASURED TO THE CENTER OF THE JUNCTION BOX.
 3. ALL PIPE ARE CLASS III UNLESS OTHERWISE NOTED.

- LEGENDS**
- (G) EX. GAS LINE CROSSING ELEVATION UNKNOWN
 - (T) EX. SW BELL CABLE CROSSING ELEVATION UNKNOWN

PLAN
SCALE 1"=100'



ELEVATION
SCALE 1"=10'



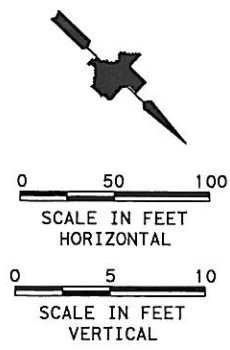
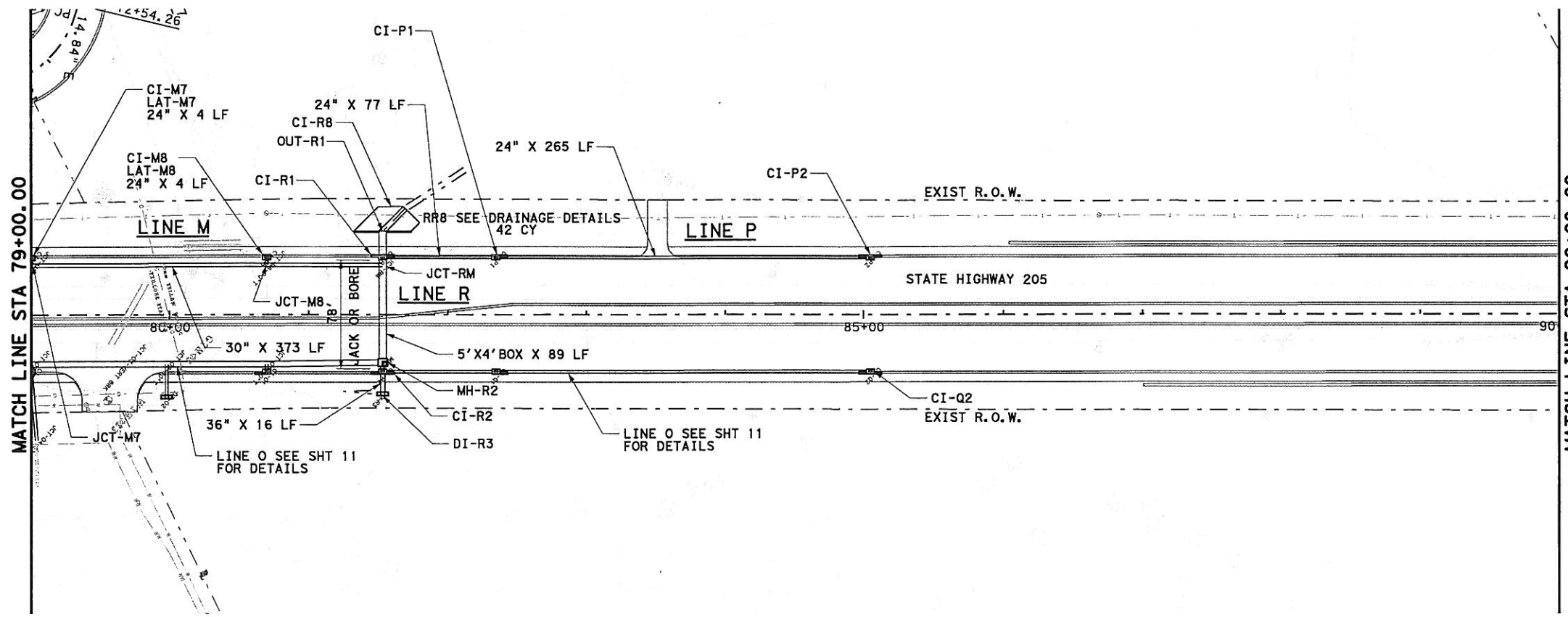
PB Parsons Brinckerhoff Quade & Douglas, Inc.
2777 Stemmons Freeway
Suite 1333
Dallas, TX 75207

Texas Department of Transportation
© 2006

SH 205
SOUTHBOUND DRAINAGE
STORM SEWER PLAN & PROFILE
STA 68+00 TO 79+00
SHEET 28 OF 57

FED. RD. DIV. NO.	FEDERAL AID PROJECT NO.	HIGHWAY NO.
6	(SEE TITLE SHEET)	SH 205
STATE	DIST.	COUNTY
TEXAS	DALLAS	ROCKWALL
CONT.	SECT.	JOB
0451	01	032, ETC
SHEET NO.		
428		

DGN=G:\JOBS\22451C-SH205\Drawings\2451cdp508A.dgn, ON=10-11, 13-62J
 3/25/2006 Plotted 25-MAR-2006 02:59



GENERAL NOTES

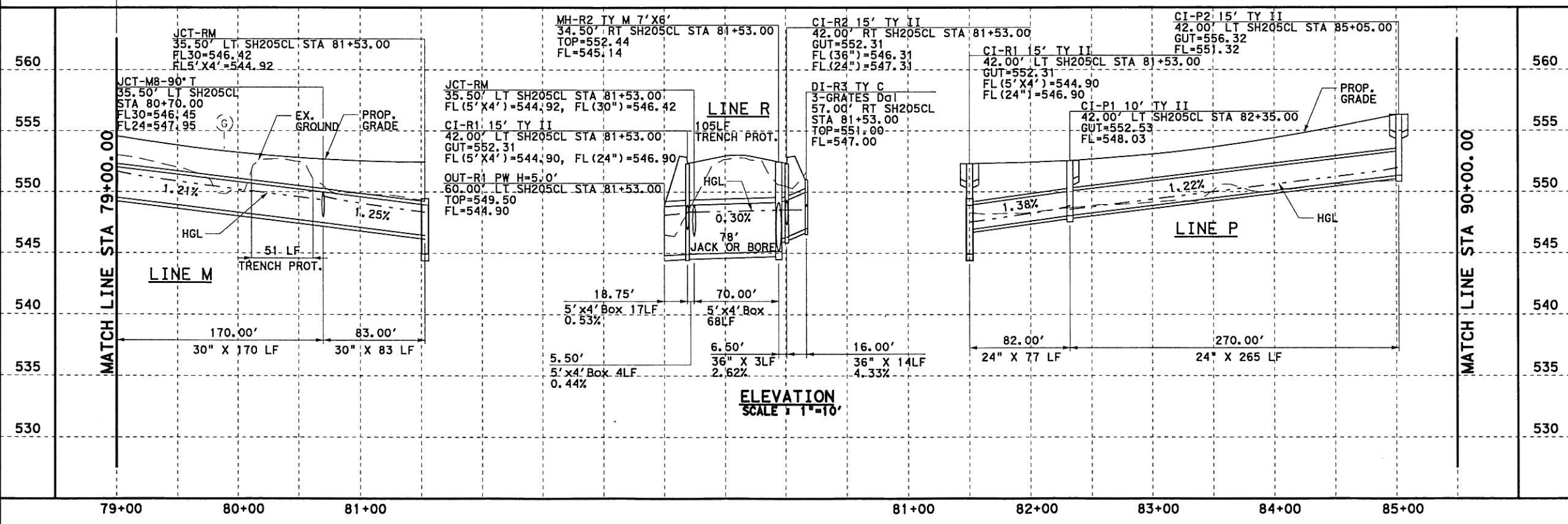
1. CURB INLETS STATION AND OFFSET ARE MEASURED TO THE MIDPOINT OF THE FACE OF MAIN INLET. GRATE INLETS STATION AND OFFSET ARE MEASURED TO THE CENTER OF THE INLET.
2. JUNCTION BOX STATION AND OFFSET ARE MEASURED TO THE CENTER OF THE JUNCTION BOX.
3. ALL PIPE ARE CLASS III UNLESS OTHERWISE NOTED.

LEGENDS

- (G) EX. GAS LINE CROSSING ELEVATION UNKNOWN
- (T) EX. SW BELL CABLE CROSSING ELEVATION UNKNOWN

JCT-M7-90° T
35.50' LT SH205CL STA 79+00.00
FL=549.52

PLAN
SCALE 1"=100'



ELEVATION
SCALE 1"=10'



Parsons Brinckerhoff Quade & Douglas, Inc.
2777 Stemmons Freeway
Suite 1333
Dallas, TX 75207



SH 205

SOUTHBOUND DRAINAGE

STORM SEWER PLAN & PROFILE
STA 79+00 TO 90+00

SHEET 29 OF 57

FED. RD. DIV. NO.	FEDERAL AID PROJECT NO.	HIGHWAY NO.
6	(SEE TITLE SHEET)	SH 205
STATE	DIST.	COUNTY
TEXAS	DALLAS	ROCKWALL
CONT.	SECT.	JOB
0451	01	032, ETC
SHEET NO.		
429		

DSN: G:\JOBS\22451C-SH205\Drawings\2451cdp509.dgn, DN=CO-11, 13-623
 3/25/2006 P:\ottd 25-MAR-2006 02:59