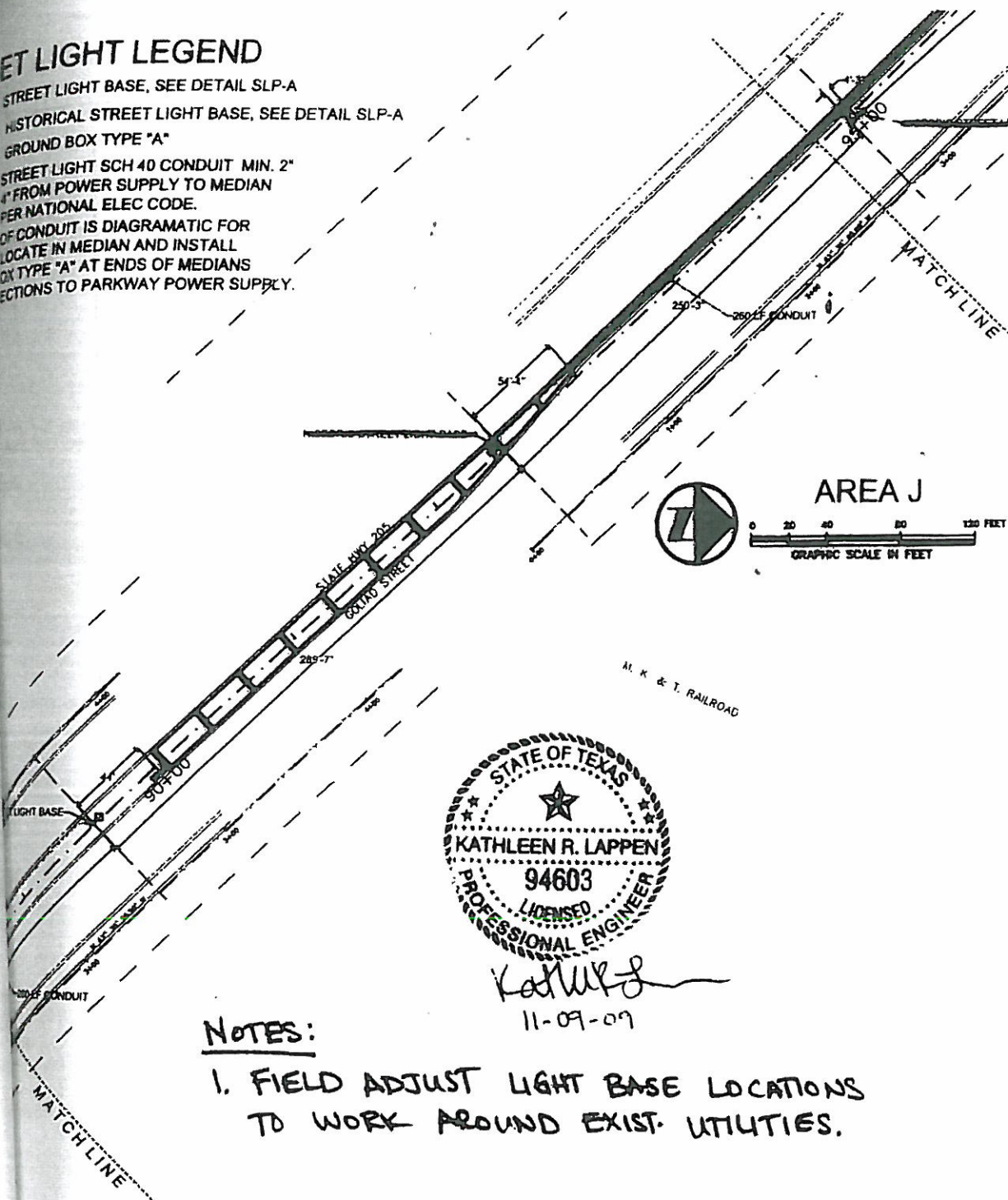


SHEET LIGHT LEGEND

- STREET LIGHT BASE, SEE DETAIL SLP-A
- HISTORICAL STREET LIGHT BASE, SEE DETAIL SLP-A
- GROUND BOX TYPE "A"
- STREET LIGHT SCH 40 CONDUIT MIN. 2" FROM POWER SUPPLY TO MEDIAN PER NATIONAL ELEC CODE.
- OF CONDUIT IS DIAGRAMATIC FOR LOCATE IN MEDIAN AND INSTALL BOX TYPE "A" AT ENDS OF MEDIANS CONNECTIONS TO PARKWAY POWER SUPPLY.



Kathleen R. Lappen
11-09-09

NOTES:
1. FIELD ADJUST LIGHT BASE LOCATIONS TO WORK AROUND EXIST. UTILITIES.

DESIGNER
MR. PATRICK HAGE
LANDSCAPE ARCHITECT
STATE DEPT. OF TRANSPORTATION
1 P.O. BOX 3087
DALLAS, TEXAS 75221
(214) 320-6205 PHONE
(214) 320-6815 FAX

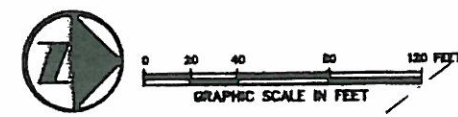
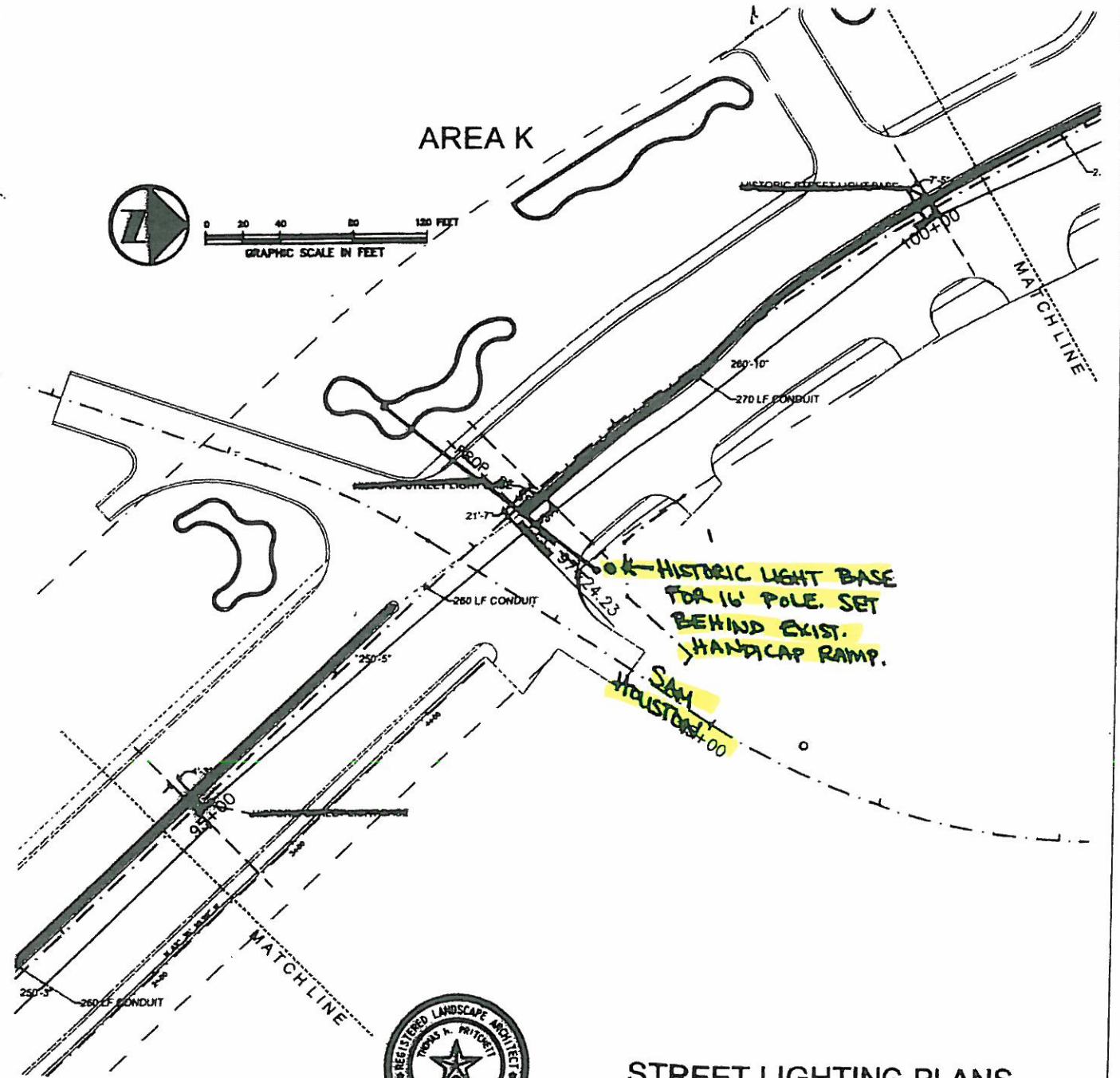
STATE D.O.T.
MR. PATRICK HAGE
LANDSCAPE ARCHITECT
STATE DEPT. OF TRANSPORTATION
1 P.O. BOX 3087
DALLAS, TEXAS 75221
(214) 320-6205 PHONE
(214) 320-6815 FAX

CITY OF ROCKWALL
MR. GREG WINGS
DIRECTOR OF PARKS AND RECREATION
CITY OF ROCKWALL
108 E. WASHINGTON STREET
ROCKWALL, TEXAS 75087
(972) 771-7781 PHONE
(972) 771-7728 FAX



THE SEAL APPEARING ON THIS DOCUMENT WAS AUTHORIZED BY T. H. PRITCHETT, R.L.A. NO. 2113 ON 03/22/2005

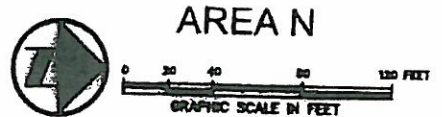
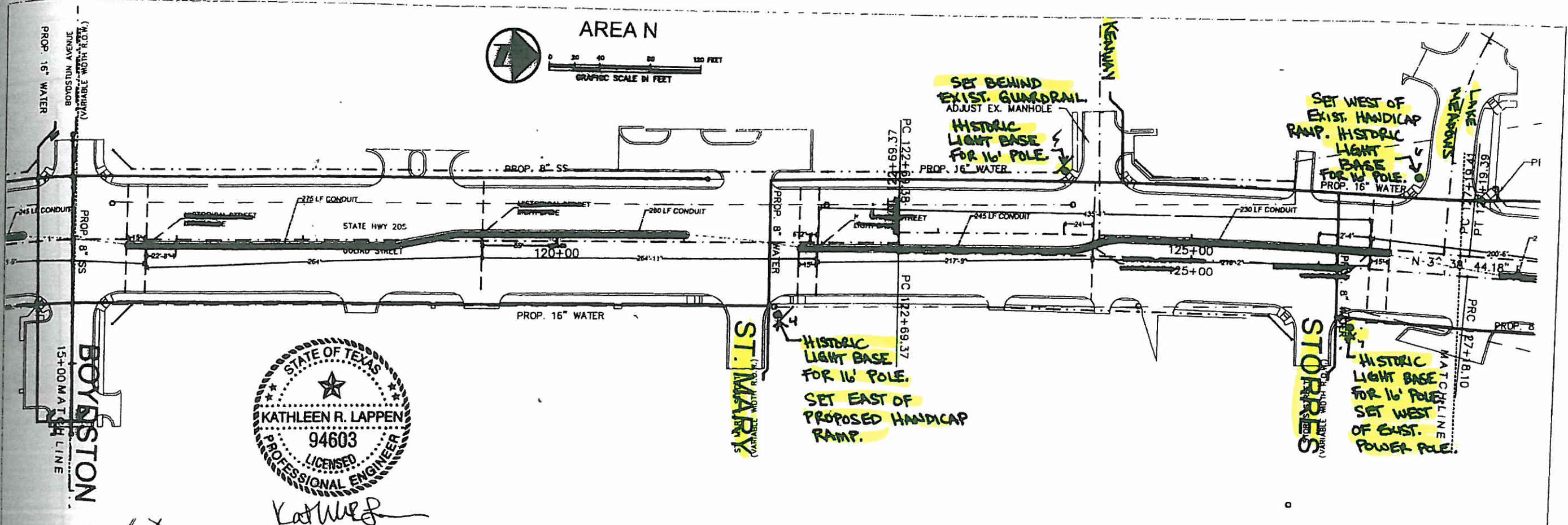
LANDSCAPE ARCHITECT
T.H. PRITCHETT ASSOCIATES
LANDSCAPE ARCHITECTURAL DESIGN
3017 WESTMINSTER DRIVE
FARMERS BRANCH, TEXAS 75234
(972) 404-1230 FAX
(972) 404-7373 PHONE



HISTORIC LIGHT BASE FOR 16' POLE. SET BEHIND EXIST. HANDICAP RAMP.
SAM HOUSTON 100

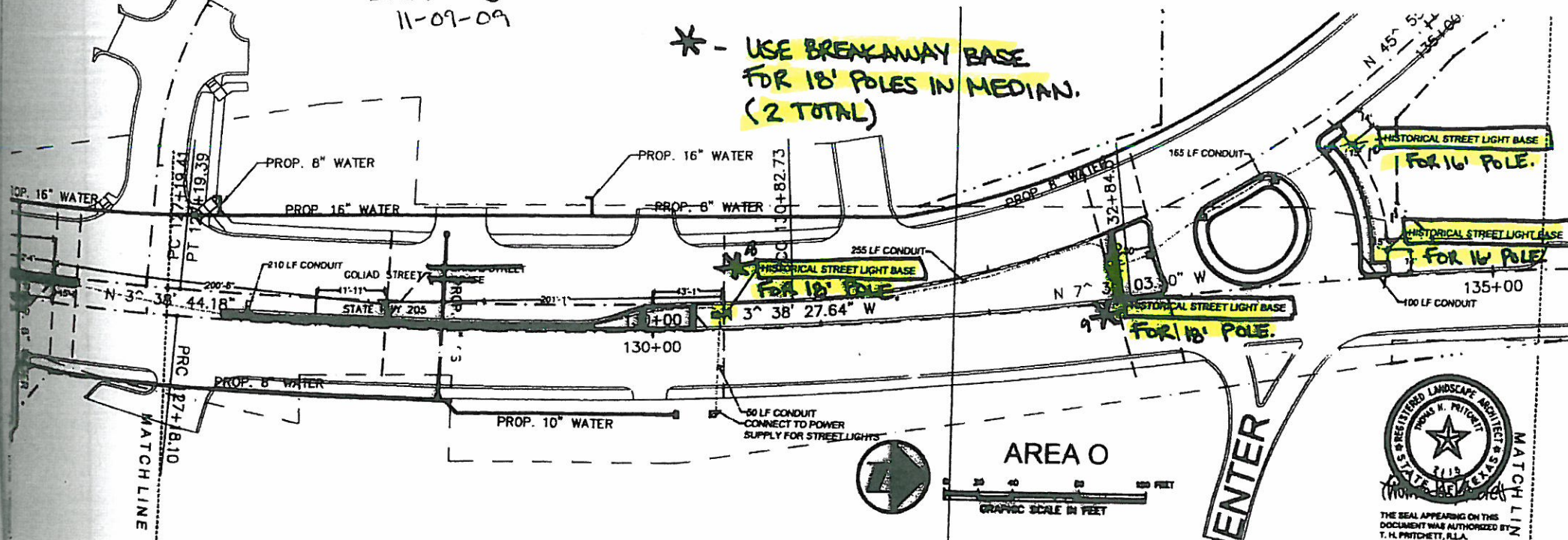
STREET LIGHTING PLANS

FED. RD. DIV. NO.	PROJECT NO.		SHEET NO.
6	(See Title Sheet)		842A
STATE	STATE DIST. NO.	COUNTY	
TEXAS	18	ROCKWALL	
CONTROL	SECTION	JOB	HIGHWAY NO.
0451	01	032	SH 205



Kathleen R. Lappen
11-09-09

* - USE BREAKAWAY BASE FOR 18' POLES IN MEDIAN. (2 TOTAL)



- ### STREET LIGHT LEGEND
- STREET LIGHT BASE, SEE DETAIL SLP-A
 - ◆ HISTORICAL STREET LIGHT BASE, SEE DETAIL SLP-A
 - GROUND BOX TYPE "A"
 - STREET LIGHT SCH 40 CONDUIT MIN. 2" 4" FROM POWER SUPPLY TO MEDIAN PER NATIONAL ELEC CODE.
- LOCATION OF CONDUIT IS DIAGRAMATIC FOR CLARITY, LOCATE IN MEDIAN AND INSTALL GROUND BOX TYPE "A" AT ENDS OF MEDIANS AND CONNECTIONS TO PARKWAY POWER SUPPLY.

STREET LIGHTING PLANS

FED. RD. DIV. NO.	PROJECT NO.	SHEET NO.	
6	(See Title Sheet)	844A	
STATE	STATE DIST. NO.	COUNTY	
TEXAS	18	ROCKWALL	
CTRL	SECTION	JOB	HIGHWAY NO.
0451	01	032	SH 205

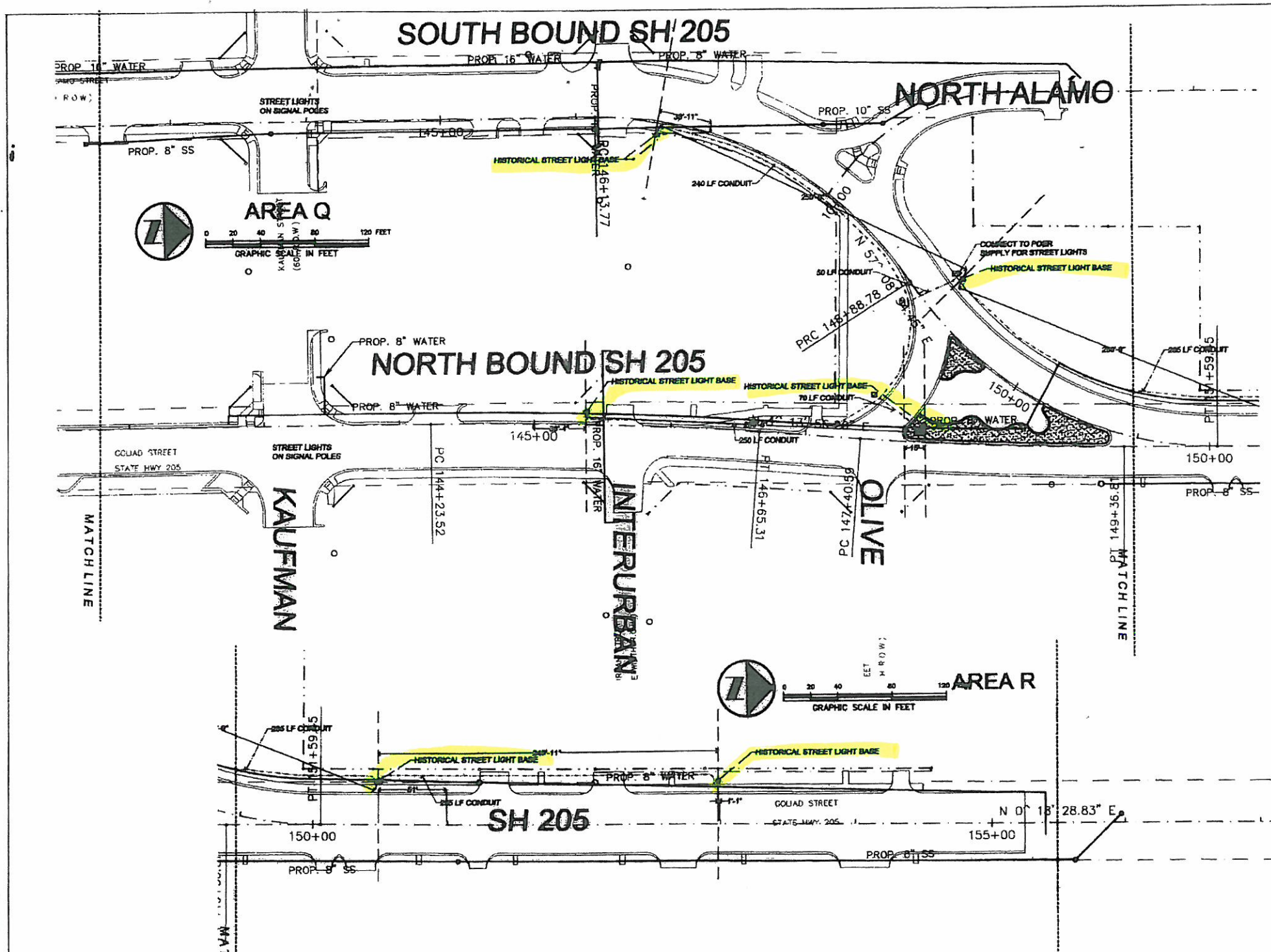
IRRIGATION DESIGNER
JOHN WOODFIELD
801 BURNSIDE TRAIL
RICHARDSON, TEXAS 75081
(972) 238-1400 PHONE
(972) 238-1400 FAX

SEE NOTES, PAGE 1.

STATE D.O.T.
MR. FRANK HANDE
LANDSCAPE ARCHITECT
STATE DEPT. OF TRANSPORTATION
1F.O.BOX 5907
DALLAS, TEXAS 75221
(214) 320-8305 PHONE
(214) 320-8815 FAX

CITY OF ROCKWALL
MR. BRAD GROSS
DIRECTOR OF PARKS AND RECREATION
CITY OF ROCKWALL
108 E. WASHINGTON STREET
ROCKWALL, TEXAS 75087
(972) 771-7761 FAX
(972) 771-7728 FAX

LANDSCAPE ARCHITECT
T.H. PRITCHETT ASSOCIATES
LANDSCAPE ARCHITECTURAL DESIGN
3017 WESTMINSTER DRIVE
FARMERS BRANCH, TEXAS 75234
(972) 494-1230 FAX
(972) 494-7373 PHONE



STREET LIGHT LEGEND

- STREET LIGHT BASE, SEE DETAIL SLP-A
- HISTORICAL STREET LIGHT BASE, SEE DETAIL SLP-A
- GROUND BOX TYPE "A"
- STREET LIGHT SCH 40 CONDUIT MIN. 2" 4" FROM POWER SUPPLY TO MEDIAN PER NATIONAL ELEC CODE.

LOCATION OF CONDUIT IS DIAGRAMATIC FOR CLARITY, LOCATE IN MEDIAN AND INSTALL GROUND BOX TYPE "A" AT ENDS OF MEDIANS AND CONNECTIONS TO PARKWAY POWER SUPPLY.

ANY FUTURE INSTALLATION FOR ILLUMINATION SYSTEMS WILL BE DONE TO THE NATIONAL ELECTRICAL CODE AND TxDOT RESERVES THE RIGHT TO REVIEW AND INSPECT THESE INSTALLATIONS.

IRRIGATION DESIGNER
 JOHN WINGFIELD
 801 MORNINGSIDE TRAIL
 RICHARDSON, TEXAS 75081
 (972) 238-1498 PHONE
 (972) 238-1499 FAX

CIVIL ENGINEER
 CHUCK TODD
 ENGINEERING DEPARTMENT
 385 S. GOLIAD
 CITY OF ROCKWALL, TEXAS 75081
 (972) 771-7746 PHONE
 (972) 771-7748 FAX

STATE D.O.T.
 MR. PATRICK HAGE
 LANDSCAPE ARCHITECT
 STATE DEPT. OF TRANSPORTATION
 1P.O. BOX 3067
 DALLAS, TEXAS 75221
 (214) 320-6205 PHONE
 (214) 320-6615 FAX

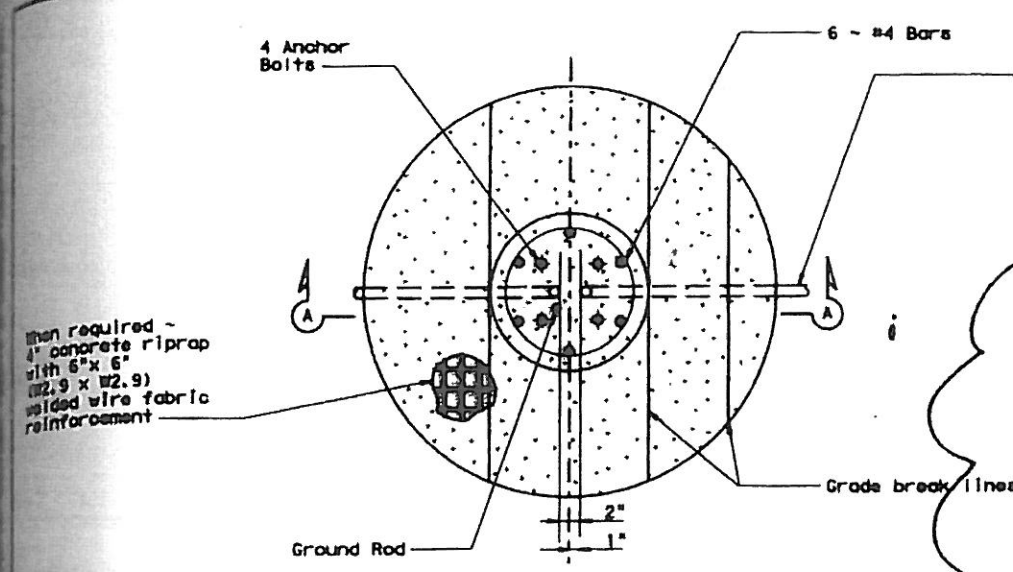
CITY OF ROCKWALL
 MR. BRAD GRIGGS
 DIRECTOR OF PARKS AND RECREATION
 CITY OF ROCKWALL
 108 E. WASHINGTON STREET
 ROCKWALL, TEXAS 75087
 (972) 771-7781 PHONE
 (972) 771-7728 FAX

LANDSCAPE ARCHITECT
 T.H. PRITCHETT ASSOCIATES
 LANDSCAPE ARCHITECTURAL DESIGN
 3017 WESTMINSTER DRIVE
 FARMERS BRANCH, TEXAS 75234
 (972) 484-1230 FAX
 (972) 484-7373 PHONE

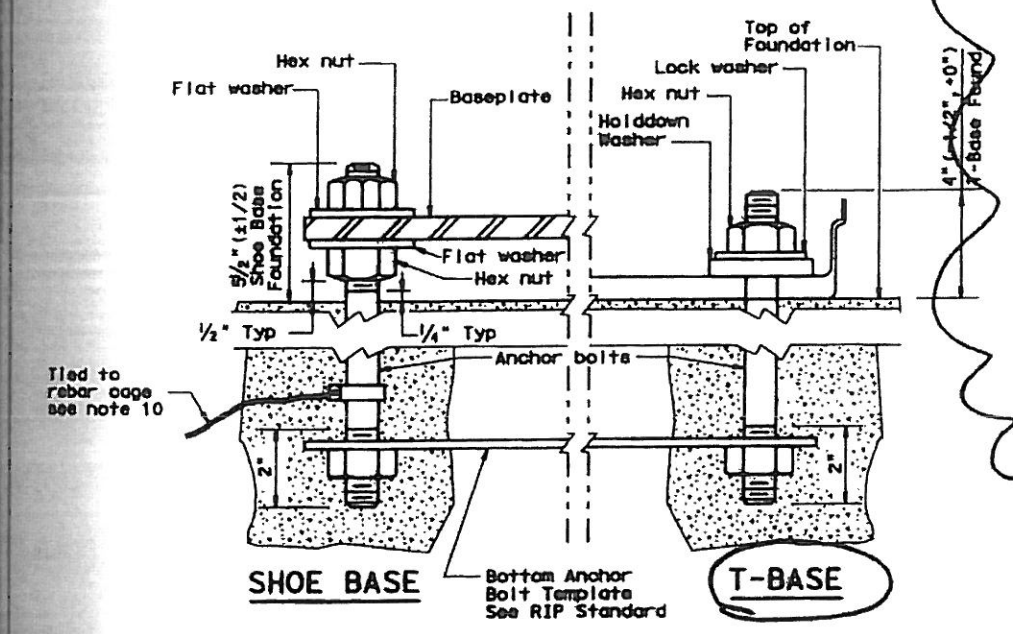


STREET LIGHTING PLANS

FED. RD. DIV. NO.	PROJECT NO.	SHEET NO.	
6	(See Title Sheet)	846	
STATE	STATE DIST. NO.	COUNTY	
TEXAS	18	ROCKWALL	
CONTROL	SECTION	JOB	HIGHWAY NO.
0451	01	032	SH 205



FOUNDATION DETAIL

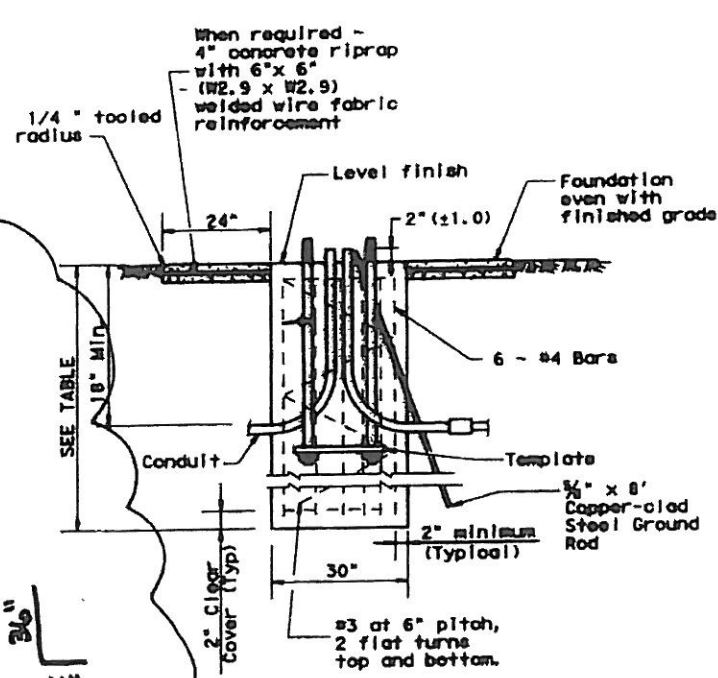


ANCHOR BOLT DETAIL

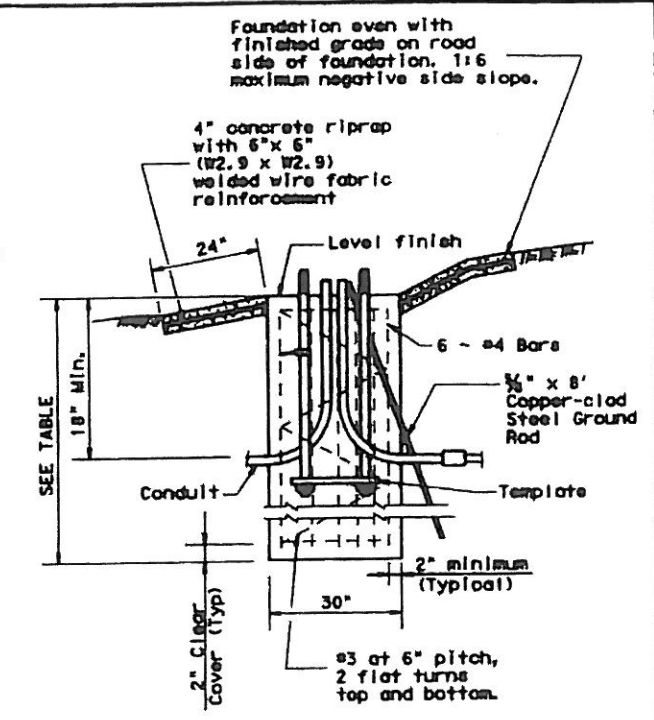
Conduit (See lighting layout for conduit size. Match duct cable size if used. See ED standard sheets.)

FOR BREAKAWAY BASE:

- Change length and have 4" bend
- Use bolt pattern supplied by manufacturer.



SECTION A-A
SHOWING CONSTANT GRADE



SECTION A-A
SHOWING SLOPED GRADE

PAY QUANTITY OF RIPRAP PER FOUNDATION
(Install only when shown on the plans)

Foundation Diameter	RIPRAP DIAMETER	RIPRAP (CONC) (CL B)
30 in.	78 in.	0.35 CY

RECOMMENDED FOUNDATION LENGTHS
(See note 1)

MOUNTING HEIGHT	TEXAS CONE PENETROMETER N Blows/ft		
	10	15	40
<20 ft.	6'	6'	6'
>20 ft. to 30 ft.	8'	6'	6'
>30 ft. to 40 ft.	8'	8'	6'
>40 ft. to 50 ft.	10'	8'	6'

ANCHOR BOLTS

POLE MOUNTING HEIGHT	BOLT CIRCLE		ANCHOR BOLT SIZE
	Shoe Base	T-Base	
<40 ft.	13 in.	14 in.	1 in. x 30 in.
40-50 ft.	15 in.	17 1/2 in.	1 1/2 in. x 30 in.

1 in. x 36 in. x 4 in.

BREAKAWAY POLE PLACEMENT (See note 6)

Roadway Functional Classification	** Pole offset (distance to transformer base, tolerance + 6 in. - 0 in.)
Freeway Mainlanes (roadway with full control of access)	15 ft. (minimum and typical) from lane edge
All curbed, 45 mph or less design speed	2.5 ft. minimum (15 ft. desirable) from curb face
All others	10 ft. minimum (15 ft. desirable) from lane edge

* or as close to ROW line as is practical
 ** provides 2/5 of the luminaire mounting height behind the pole for "falling area" to prevent encroachment on the other travel lanes. See design guidelines.

1. "Recommended Foundation Lengths" table is for information purposes only. Foundation lengths shall be as shown on the plans, or as directed by the Engineer. Foundations will be paid for under Item 416, "Drilled Shaft Foundations," unless otherwise shown on the plans.
2. Erect roadway illumination assembly poles plumb and true. Form and level the top 6" of the foundation so the pole will be plumb. Use leveling nuts to plumb shoe base poles. Do not use shims or leveling nuts under transformer bases. Do not grout between baseplate and the foundation.
3. Ensure Class 2A and 2B fit for anchor bolts and nuts. Tap and chase nuts after galvanizing. Anchor bolt body with rolled threads need not be full size.
4. Use appropriate class of concrete as specified in Items 416 and 432.
5. Place riprap around the foundation when called for elsewhere in the plans. Riprap will be paid for under Item 432.
6. Locate breakaway roadway illumination assemblies as shown in the placement table, unless otherwise dimensioned on the plans. Protect non-breakaway illumination assemblies from vehicular impact (i.e. 2 ft. behind guard rail or mounted on traffic barrier), or located outside the clear zone, except that 2.5 ft. from curb face is minimum desired for light poles on city streets, 45 mph or less, see design guidelines for further information.
7. Use 8 hold down washers on transformer base poles as recommended by the manufacturer and supplied with base.
8. Install a minimum of 2 conduits in each foundation. See lighting layout sheets for locations of foundations with more than 2 conduits. Cap unused conduits in foundations on both ends.
9. Conduit location in foundations is critical for breakaway devices. Place conduits 2 in. apart on centerline as shown.
10. Band anchor bolt to rebar cage with #6 bars stranded copper conductor. Use listed mechanical connectors rated for embedment in concrete.
11. Use rip rap on T-base foundations that are located on a sloped grades.

Texas Department of Transportation
 Traffic Operations Division
ROADWAY ILLUMINATION DETAILS
 (RDWY ILLUM FOUNDATIONS)
RID (FND) - 07

© TxDOT January 2007	DATE	BY	CHKD	APP'D
REVISIONS	DATE	BY	CHKD	APP'D
1				
2				