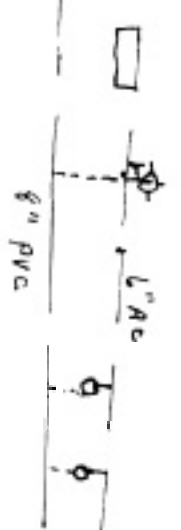


Proposed 2" service + Fire Hyd Relocation



1-12 X 8 Reducer  
1-12" Valve  
2-8" 45°

EX. FIRE HYD

EX. 6" AC WATER

ALL PARKWAY  
15+00

INSTALL:  
1 - 8" 45° BEND  
1 - 8" VALVE  
CONNECT TO EX. 8" WATER  
CUT AND PLUG EX. 8" WATER  
VERIFY EX. LOCATION

PROP. R. O. W.

N 31° 03' 59.75" W

STATE HIGHWAY 205

PROP. R. O. W.

EX. 8" WATER  
TO REMAIN

EXIST. R. O. W.

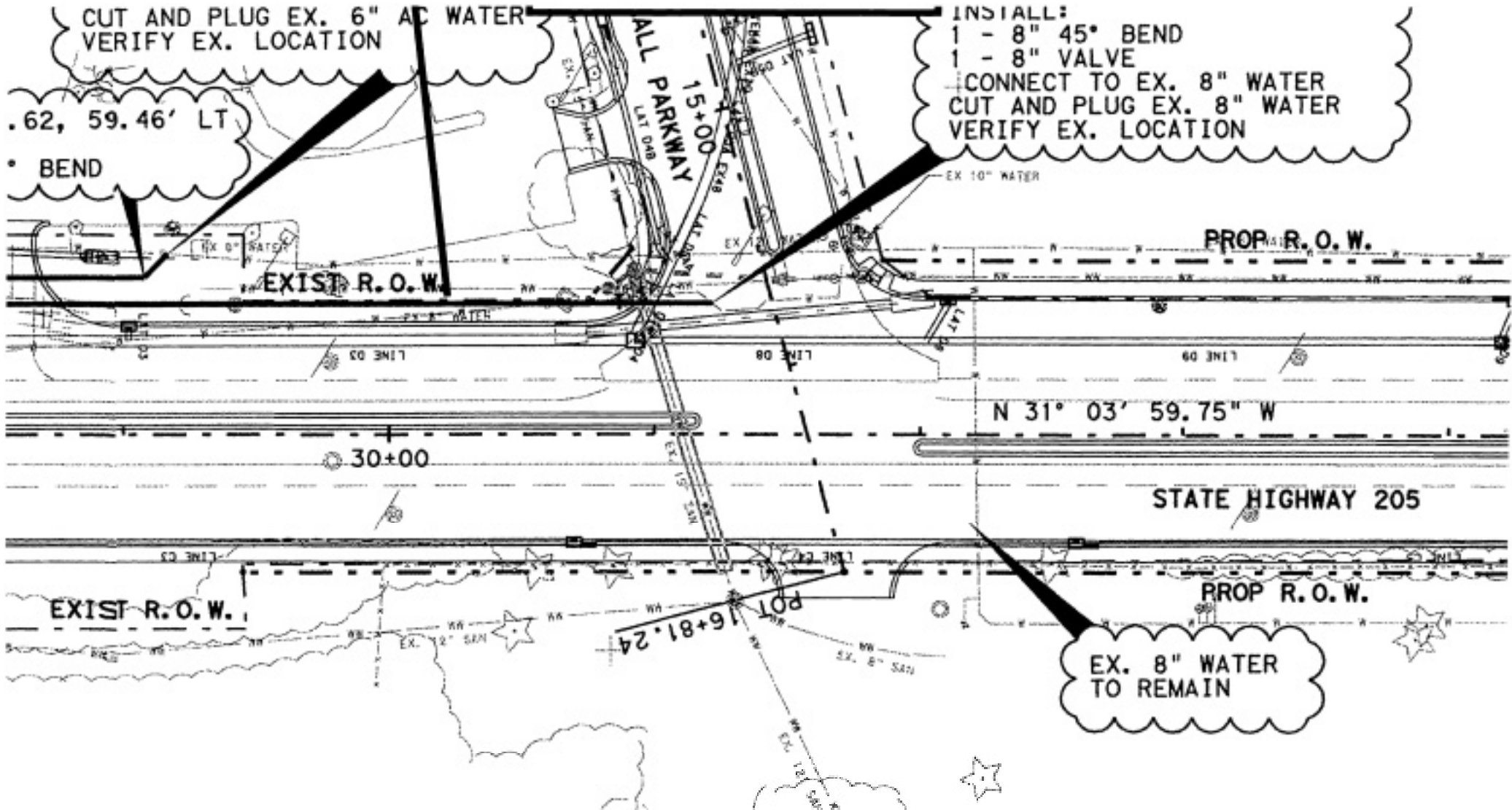


AS BUILT

CUT AND PLUG EX. 6" AC WATER  
VERIFY EX. LOCATION

INSTALL:  
1 - 8" 45° BEND  
1 - 8" VALVE  
CONNECT TO EX. 8" WATER  
CUT AND PLUG EX. 8" WATER  
VERIFY EX. LOCATION

.62, 59.46' LT  
° BEND



EXIST R.O.W.

PROP R.O.W.

N 31° 03' 59.75" W

STATE HIGHWAY 205

EXIST R.O.W.

PROP R.O.W.

EX. 8" WATER  
TO REMAIN