

D:\NSC\JOBS\22451C-SH205\U11\1\A\2451\wp01.dgn, ON=10-11, 13-621
 3/22/2006 Plotted 22-MAR-2006 15:18

3-22-06

 RICHARD T. GRICE
 37520
 REGISTERED PROFESSIONAL ENGINEER
Richard T. Grice

Parsons Brinckerhoff Quade & Douglas, Inc.
 2777 Stemmons Freeway
 Suite 1333
 198 Dallas, TX 75207

Texas Department of Transportation
 © 2006

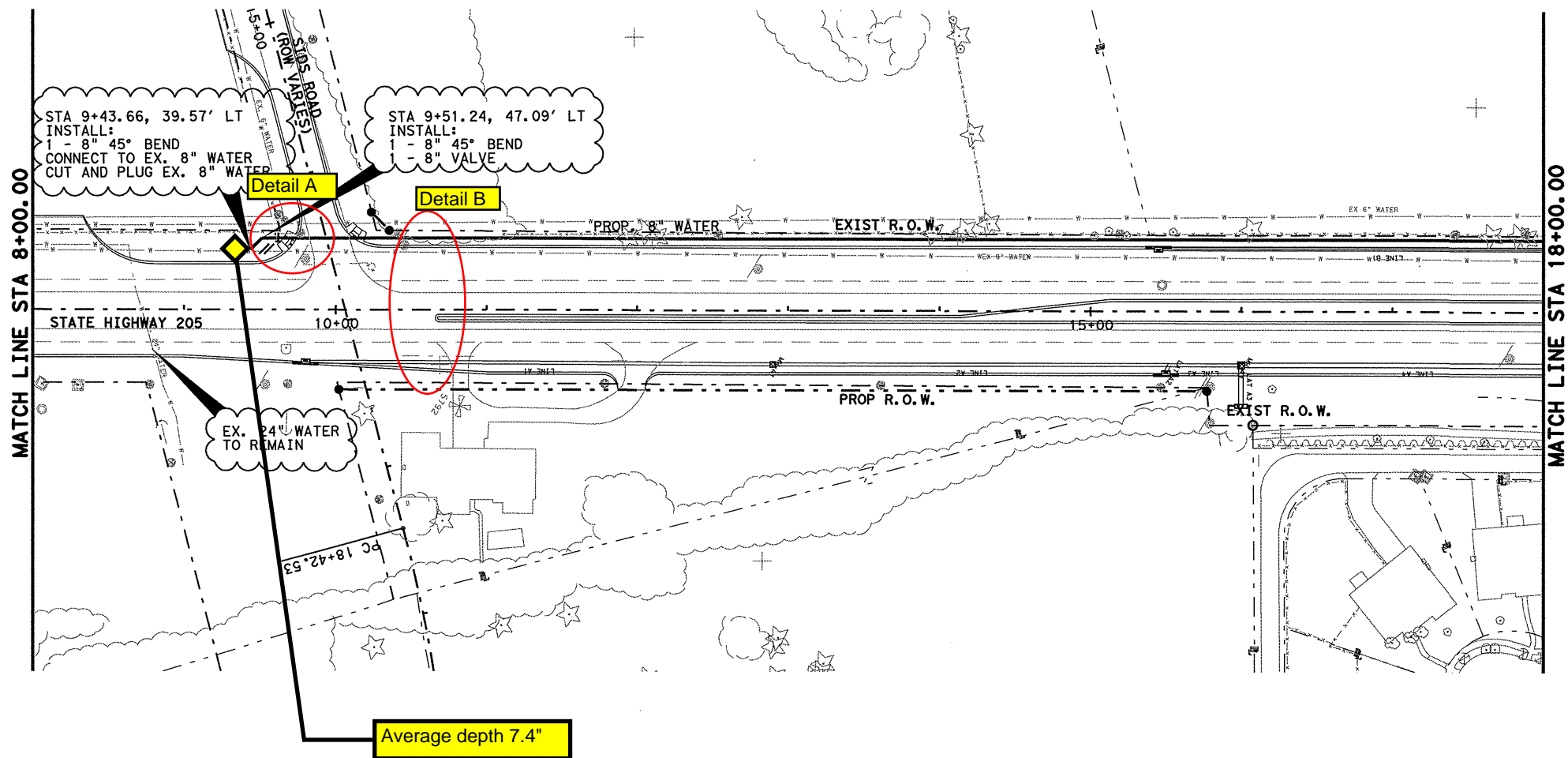
SH 205

 WATER LINE

 PLAN & PROFILE
 STA 0+00 TO 8+00

 SHEET 1 OF 19

FED. PROJ. NO. 6		FEDERAL AID PROJECT NO. (SEE TITLE SHEET)		HIGHWAY NO. SH 205	
STATE TEXAS	DIST. DALLAS	COUNTY ROCKWALL	SHEET NO. 510		
CONT. 0451	SECT. 01	JOB 032, ETC			



STA 9+43.66, 39.57' LT
 INSTALL:
 1 - 8" 45° BEND
 CONNECT TO EX. 8" WATER
 CUT AND PLUG EX. 8" WATER

STA 9+51.24, 47.09' LT
 INSTALL:
 1 - 8" 45° BEND
 1 - 8" VALVE

Detail A

Detail B

EX. 24" WATER
 TO REMAIN

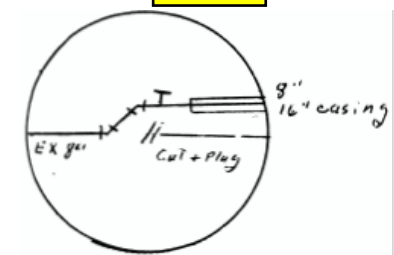
Average depth 7.4"



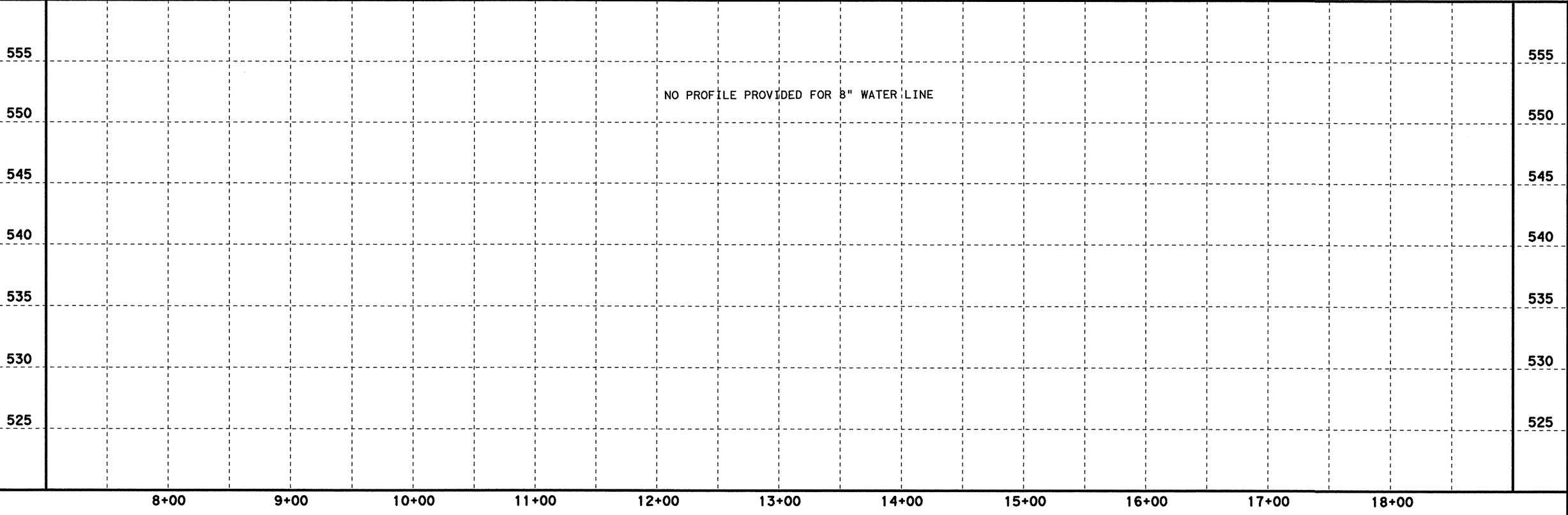
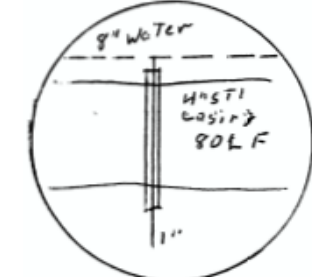
0 50 100
 SCALE IN FEET
 HORIZONTAL

0 5 10
 SCALE IN FEET
 VERTICAL

Detail A



Detail B



3-22-06

Parsons Brinckerhoff Quade & Douglas, Inc.
 2777 Stemmons Freeway
 Suite 1333
 Dallas, TX 75207

Texas Department of Transportation
 © 2006

SH 205

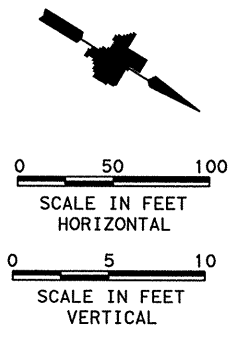
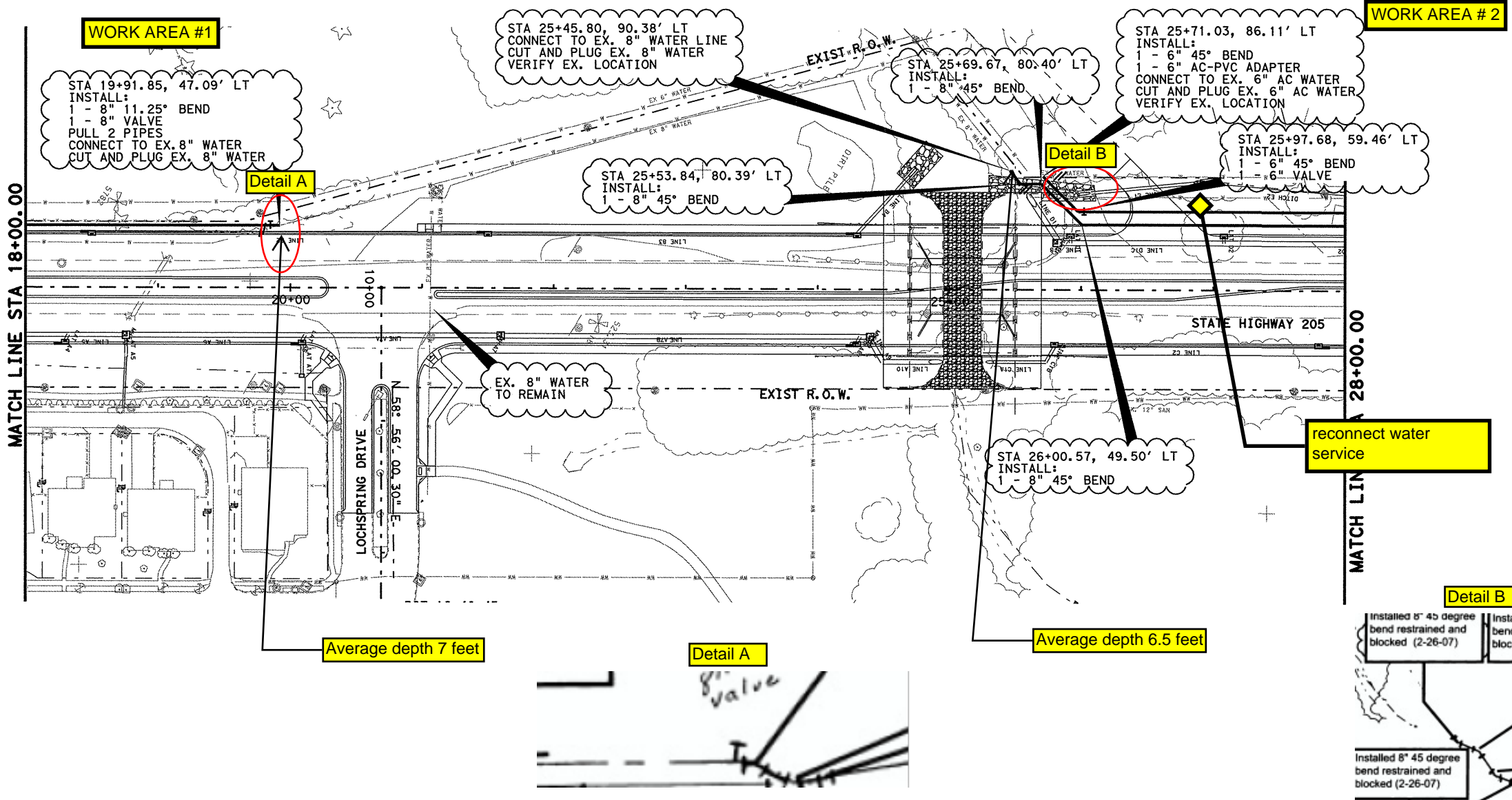
WATER LINE

PLAN & PROFILE
 STA 8+00 TO 18+00

SHEET 2 OF 19

FED. RD. DIV. NO.	FEDERAL AID PROJECT NO.	HIGHWAY NO.
6	(SEE TITLE SHEET)	SH 205
STATE	DIST.	COUNTY
TEXAS	DALLAS	ROCKWALL
CONT.	SECT.	JOB
0451	01	032, ETC
		SHEET NO.
		511

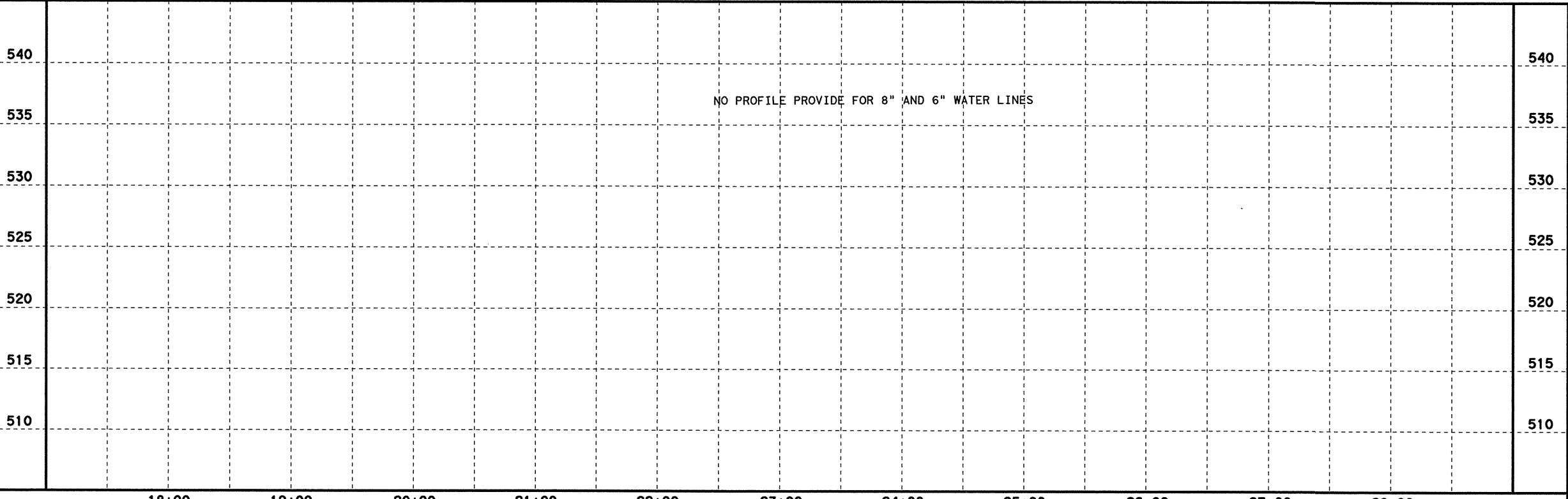
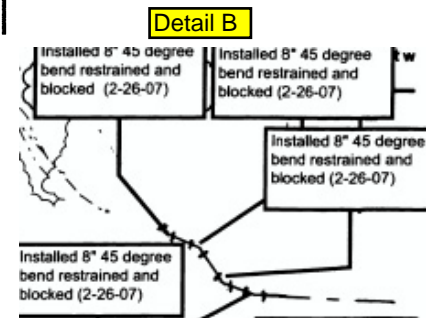
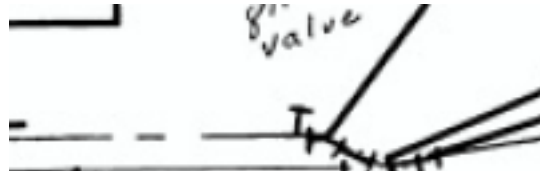
D:\CS\JOBS\22451C-SH205\J11\1\A\2451\wp02.dgn, ON=10-11, 13-62J
 3/22/2006 Plotter 22-MAR-2006 15:18



Average depth 7 feet

Average depth 6.5 feet

reconnect water service



3-22-06

Richard T. Grice

PB Parsons Brinckerhoff Quade & Douglas, Inc.
2777 Stemmons Freeway
Suite 1333
192 Dallas, TX 75207

T Texas Department of Transportation
© 2006

SH 205

WATER LINE

PLAN & PROFILE
STA 18+00 TO 28+00

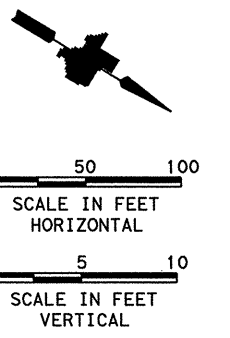
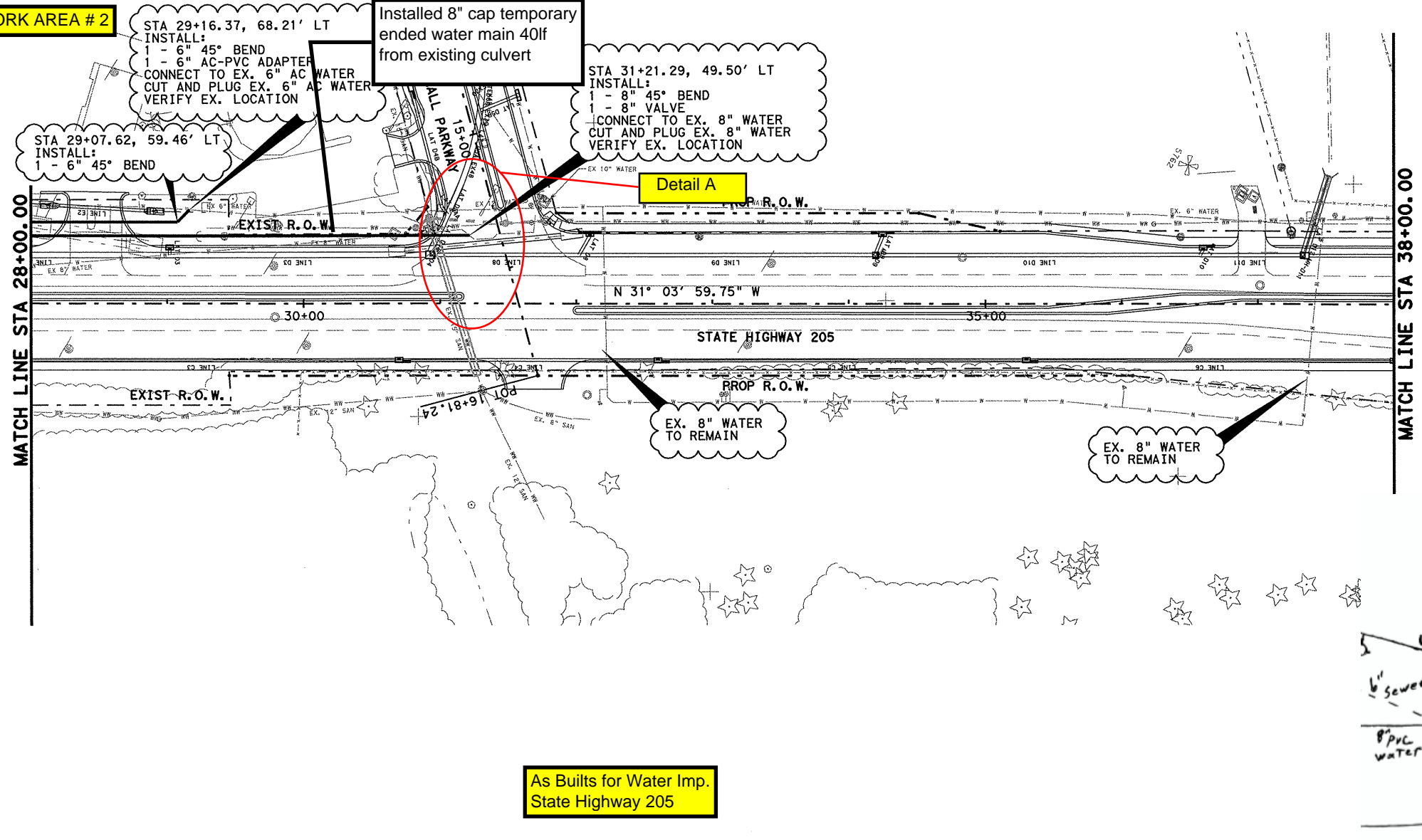
SHEET 3 OF 19

FED. RD. DIV. NO.	FEDERAL AID PROJECT NO.	HIGHWAY NO.
6	(SEE TITLE SHEET)	SH 205
STATE	DIST.	COUNTY
TEXAS	DALLAS	ROCKWALL
CONT.	SECT.	JOB
0451	01	032, ETC

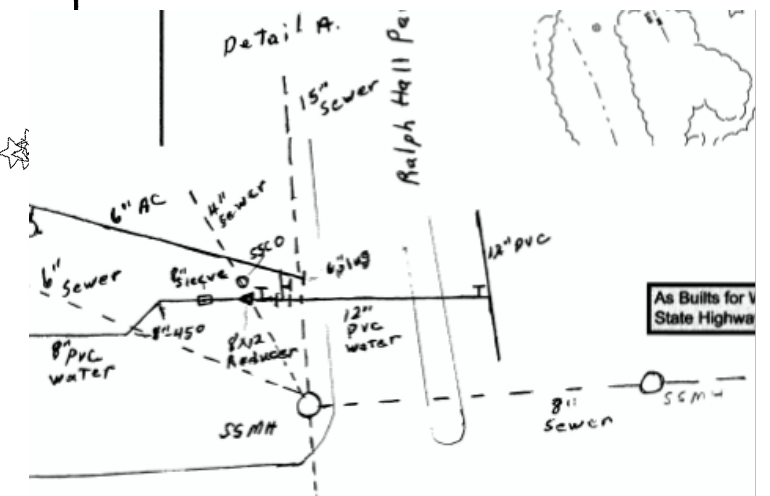
SHEET NO. 512

D:\C:\JOBS\22451C-SH205\UP\11\11\2451.dwg, ON=CO-11, 13-621
 3/22/2006 Plotted 22-MAR-2006 15:19

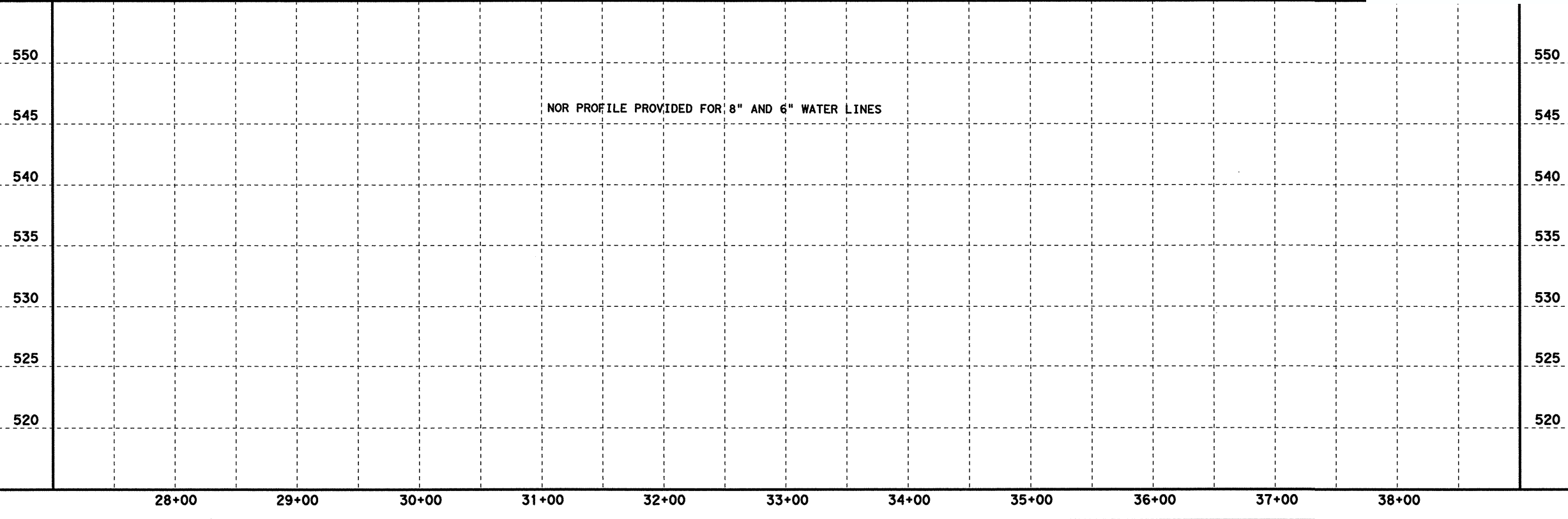
WORK AREA # 2



Detail A



**As Built for Water Imp.
State Highway 205**



3-22-00

 RICHARD T. GRICE
 37520
 REGISTERED PROFESSIONAL ENGINEER
Richard T. Grice

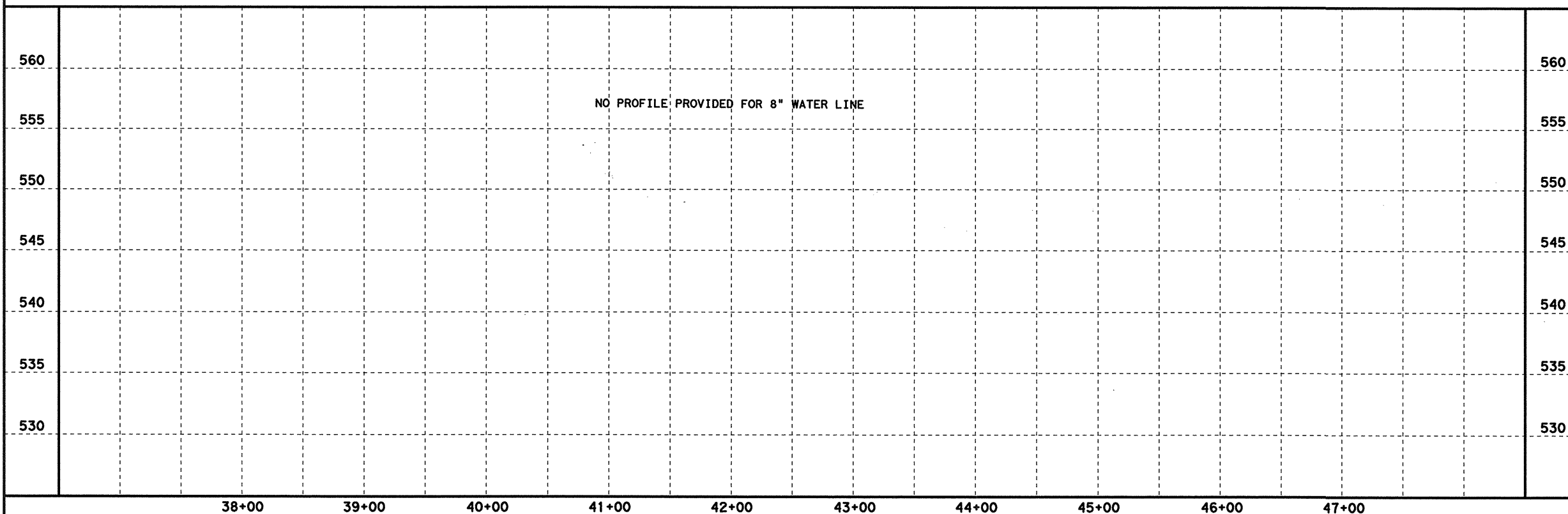
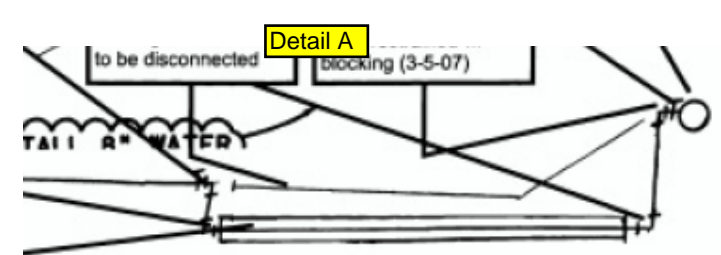
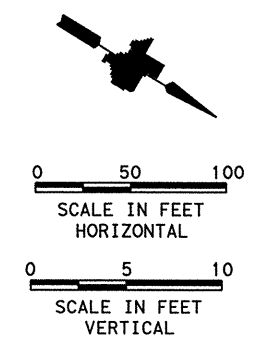
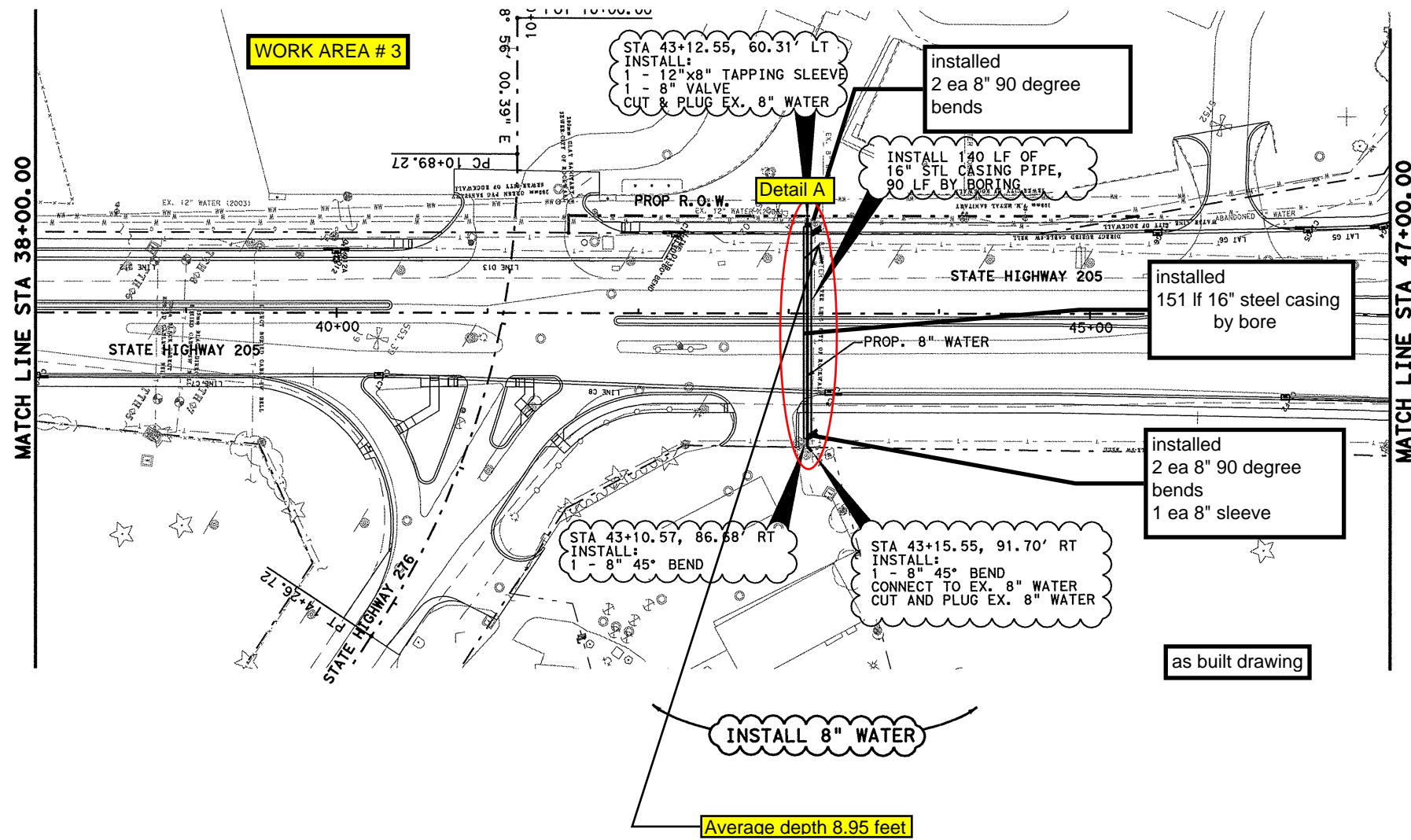
Parsons Brinckerhoff Quade & Douglas, Inc.
 2777 Stemmons Freeway
 Suite 1333
 192 Dallas, TX 75207

Texas Department of Transportation
 © 2006

SH 205
WATER LINE
 PLAN & PROFILE
 STA 28+00 TO 38+00
 SHEET 4 OF 19

FED. RD. DIV. NO.	FEDERAL AID PROJECT NO.	HIGHWAY NO.
6	(SEE TITLE SHEET)	SH 205
STATE	DIST.	COUNTY
TEXAS	DALLAS	ROCKWALL
CONT.	SECT.	JOB
0451	01	032, ETC
		SHEET NO.
		513

DGN=01\JOBS\22451C-SH205\UFI111\2451owp04.dgn, ON=10-11, 13-621
 3/22/2006 Plotted 22-MAR-2006 15:45



3-22-06

STATE OF TEXAS
 RICHARD T. GRICE
 37520
 REGISTERED PROFESSIONAL ENGINEER

Richard T. Grice

PB Parsons Brinckerhoff Quade & Douglas, Inc.
 2777 Stemmons Freeway
 Suite 1333
 Dallas, TX 75207

Texas Department of Transportation
 © 2006

SH 205

WATER LINE

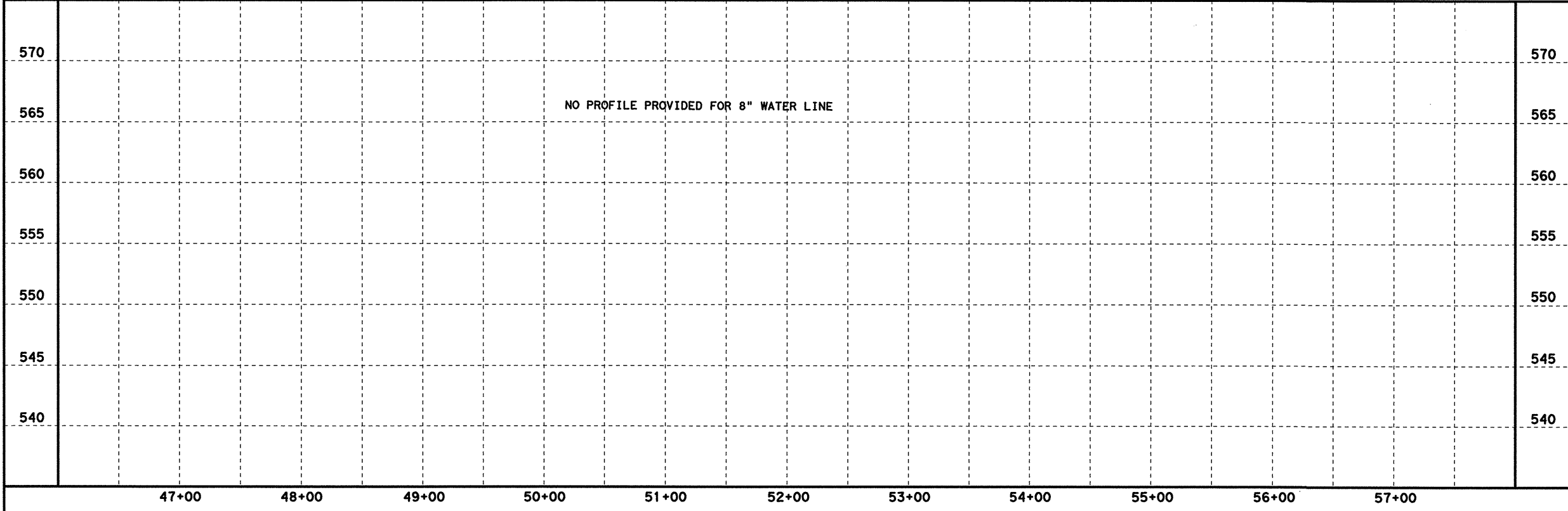
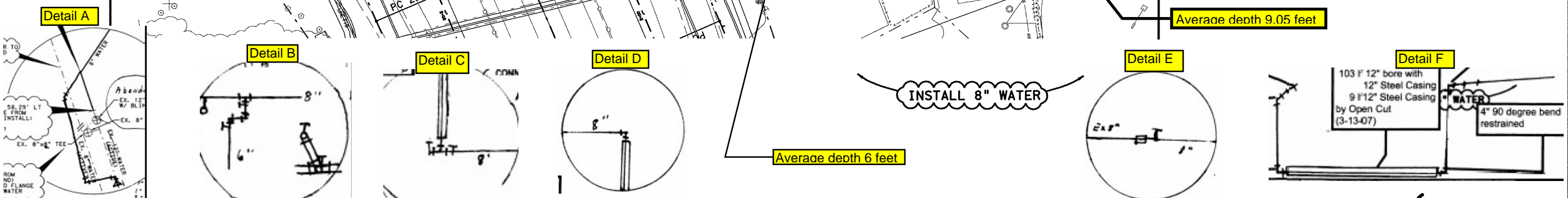
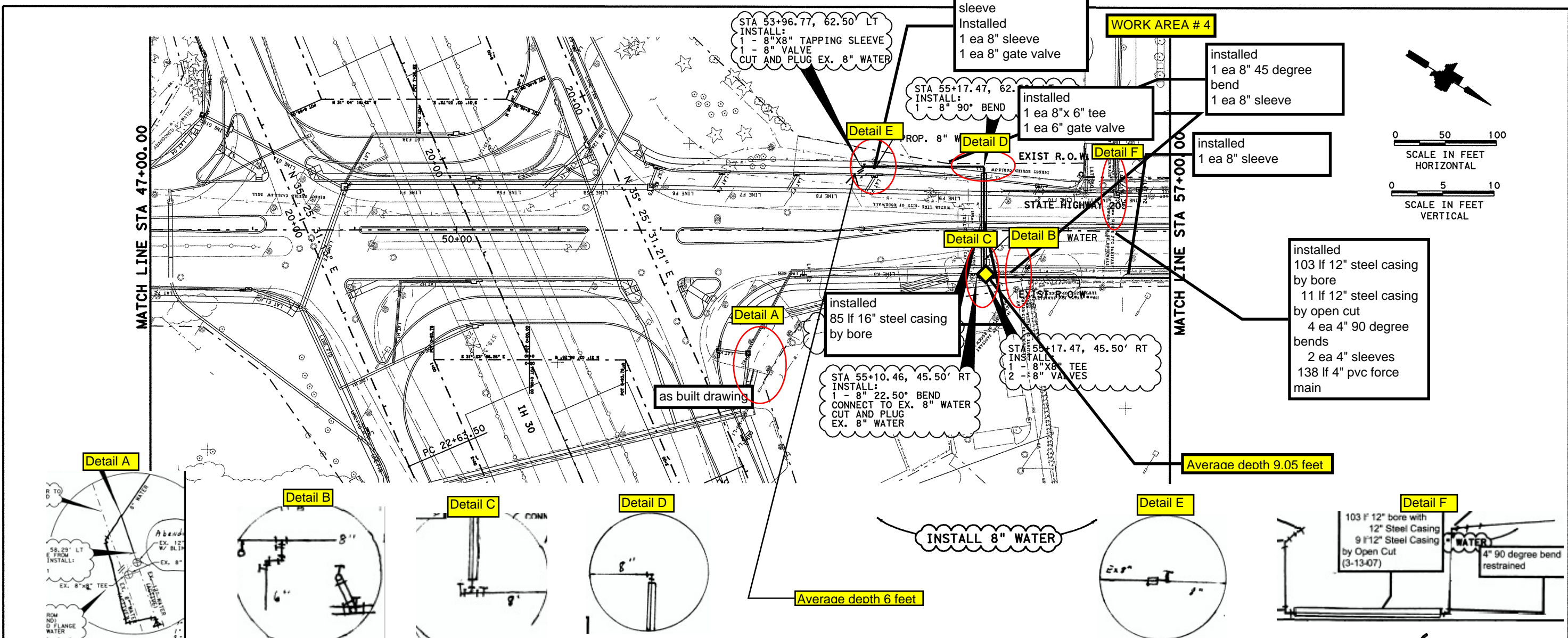
PLAN & PROFILE
 STA 38+00 TO 47+00

SHEET 5 OF 19

FED. RD. DIV. NO.	FEDERAL AID PROJECT NO.	HIGHWAY NO.
6	(SEE TITLE SHEET)	SH 205
STATE	DIST.	COUNTY
TEXAS	DALLAS	ROCKWALL
CONT.	SECT.	JOB
0451	01	032, ETC

SHEET NO. 514

D:\G:\JOBS\22-451\0-SH205\UPL\11\A\2451\wp05.dgn, ON=10-11, 13-623
 3/22/2006 Plotted



3-22-06

STATE OF TEXAS
 RICHARD T. GRICE
 37520
 REGISTERED PROFESSIONAL ENGINEER

Richard T. Grice

PB Parsons Brinckerhoff Quade & Douglas, Inc.
 2777 Stemmons Freeway
 Suite 1333
 198 Dallas, TX 75207

Texas Department of Transportation
 © 2006

SH 205

WATER LINE

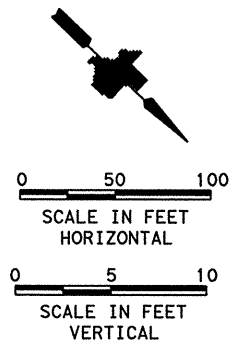
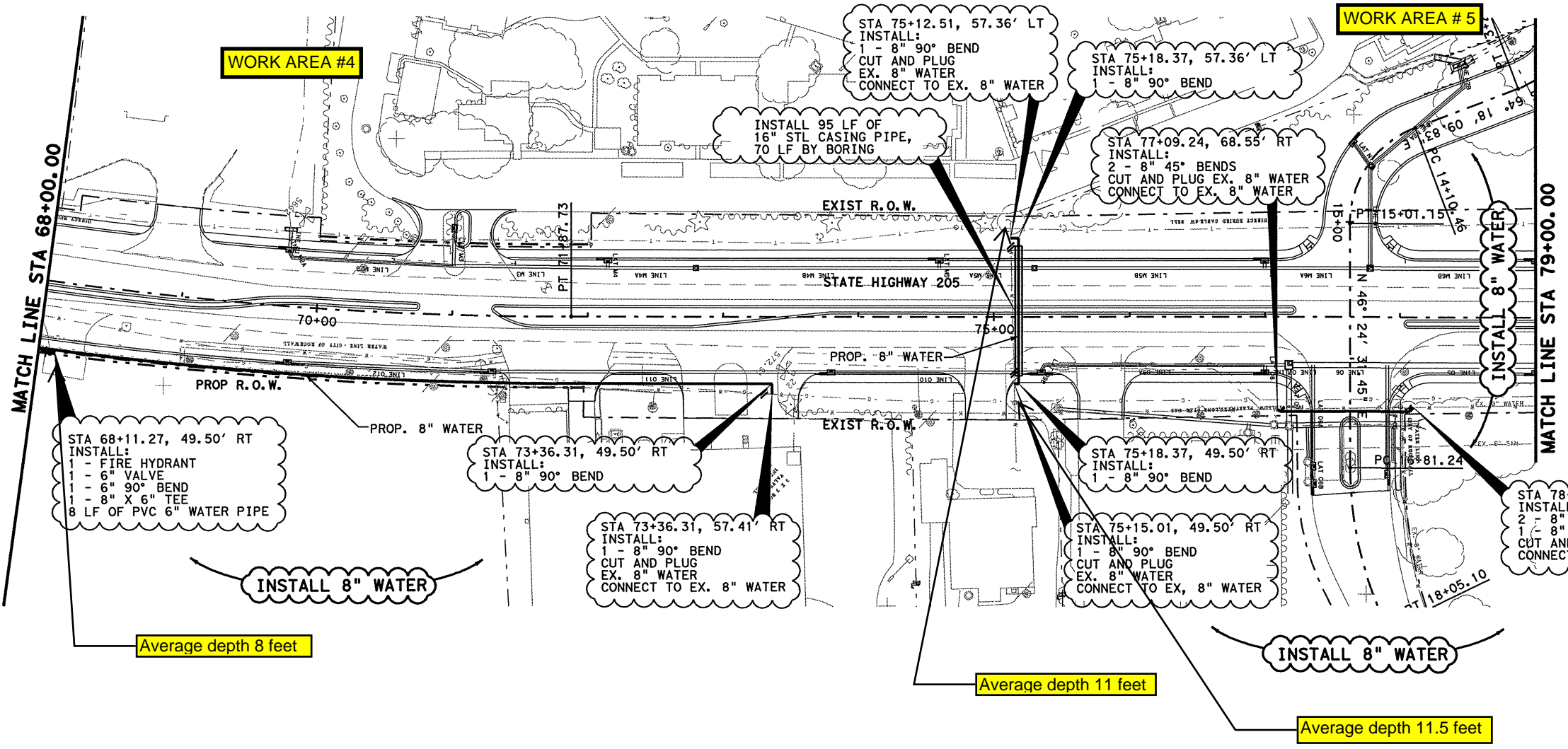
PLAN & PROFILE
 STA 47+00 TO 57+00

SHEET 6 OF 19

FED. RD. DIV. NO.	FEDERAL AID PROJECT NO.	HIGHWAY NO.
6	(SEE TITLE SHEET)	SH 205
STATE	DIST.	COUNTY
TEXAS	DALLAS	ROCKWALL
CONT.	SECT.	JOB
0451	01	032, ETC

SHEET NO. 515

D:\G:\JOBS\22451C-SH205\UT\11\TX\2451\wp06.dgn, ON=CO-11, 13-621
 3/22/2006 Plotted 22-MAR-2006 15:18



Average depth 8 feet

Average depth 11 feet

Average depth 11.5 feet

585	NO PROFILE PROVIDED FOR 8" WATER LINE										585	
580											580	
575											575	
570											570	
565											565	
560											560	
555											555	
	68+00	69+00	70+00	71+00	72+00	73+00	74+00	75+00	76+00	77+00	78+00	79+00

3-24-06

Richard T. Grice

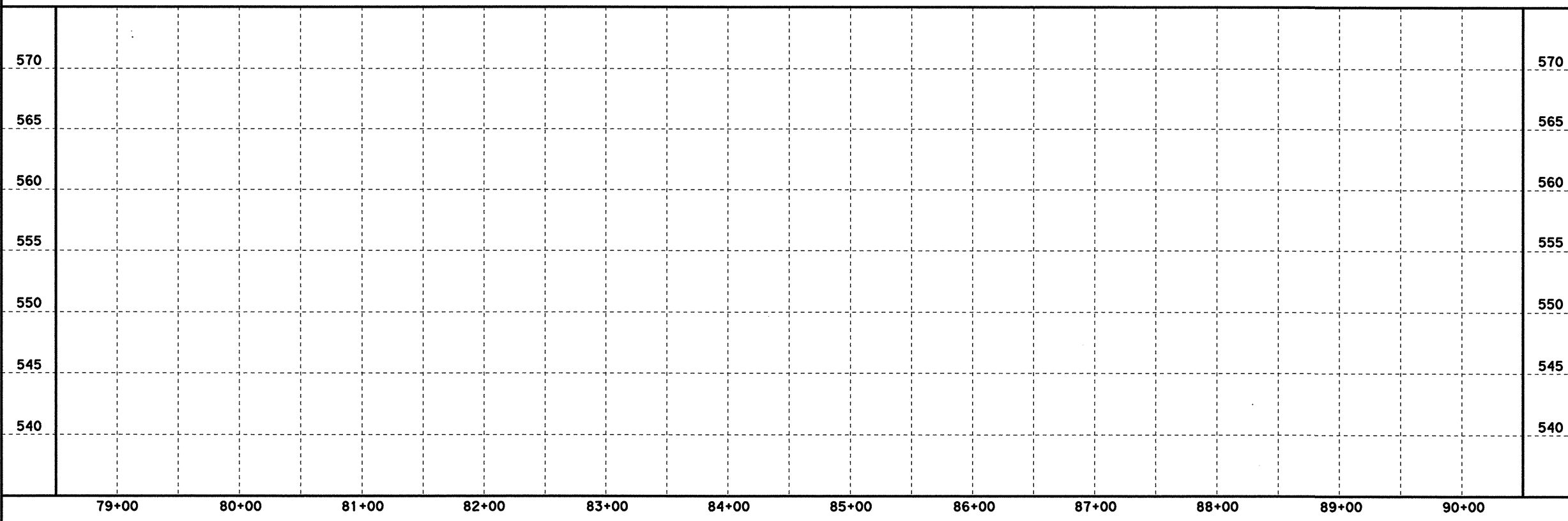
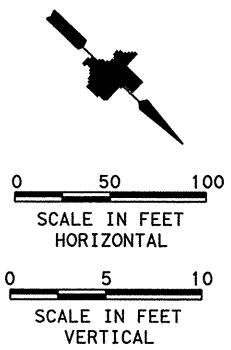
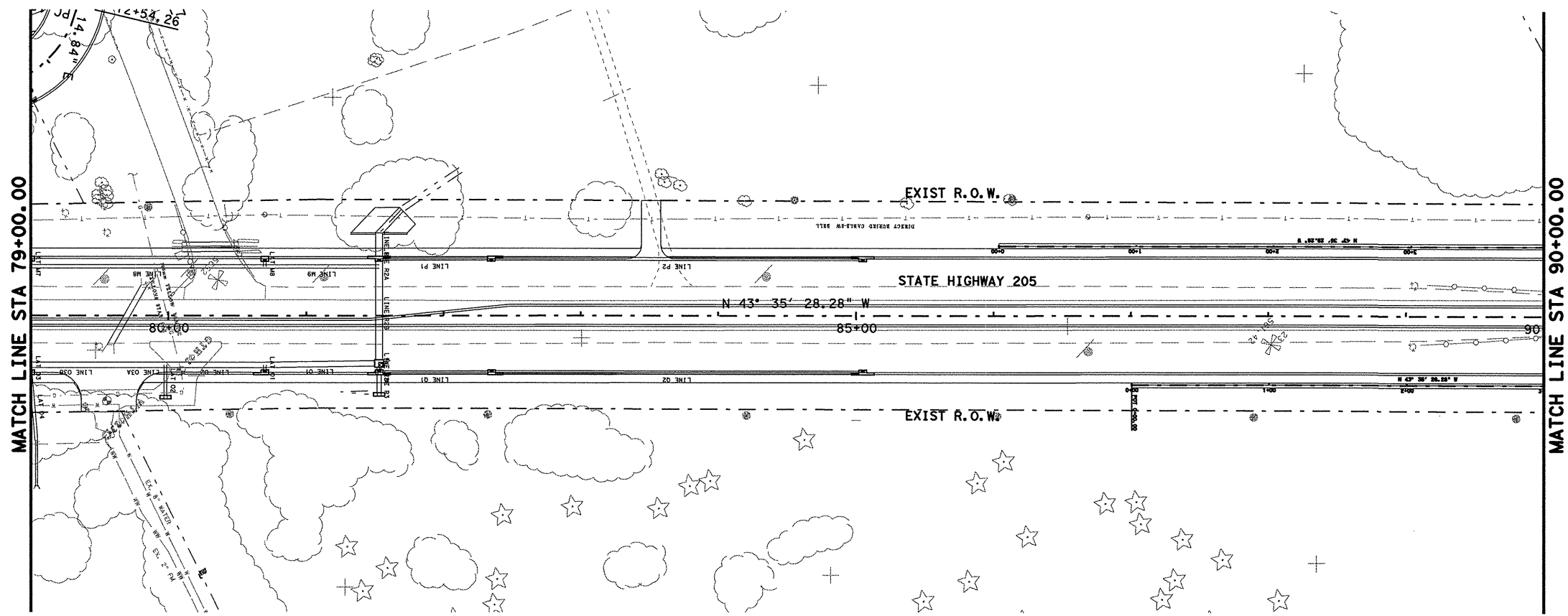
PB Parsons Brinckerhoff Quade & Douglas, Inc.
2777 Stemmons Freeway
Suite 1333
Dallas, TX 75207

Texas Department of Transportation
© 2006

SH 205
WATER LINE
PLAN & PROFILE
STA 68+00 TO 79+00
SHEET 8 OF 19

FED. RD. DIV. NO.	FEDERAL AID PROJECT NO.	HIGHWAY NO.
6	(SEE TITLE SHEET)	SH 205
STATE	DIST.	COUNTY
TEXAS	DALLAS	ROCKWALL
CONT.	SECT.	JOB
0451	01	032, ETC
		SHEET NO.
		517

DGN-G:\JOBS\22451C-SH205-UT\11\1\2451\omp08.dgn, ON=10-11, 13-621
 3/24/2006 Plotted 24-MAR-2006 13:15



3-22-06

STATE OF TEXAS
 RICHARD T. GRICE
 37520
 REGISTERED PROFESSIONAL ENGINEER

Richard T. Grice

PB Parsons Brinckerhoff Quade & Douglas, Inc.
 2777 Stemmons Freeway
 Suite 1333
 Dallas, TX 75207

T Texas Department of Transportation
 © 2006

SH 205

WATER LINE

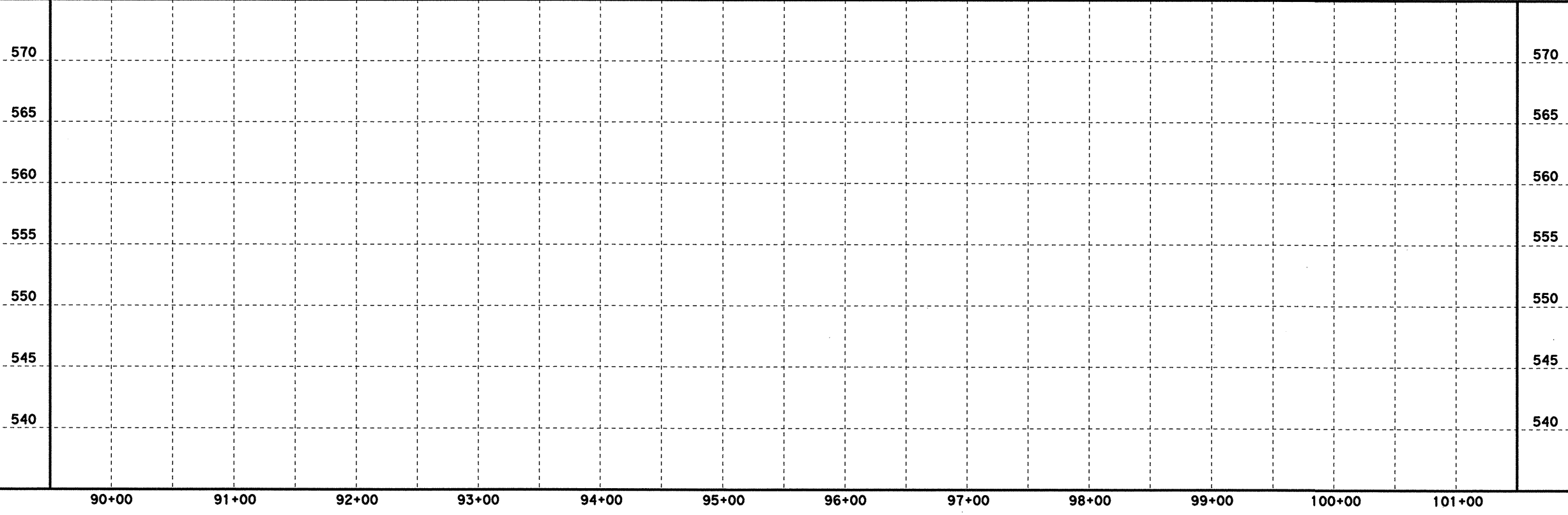
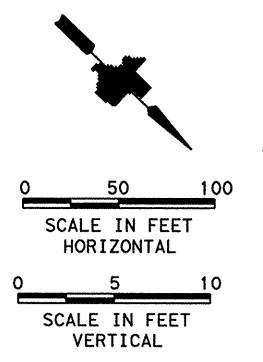
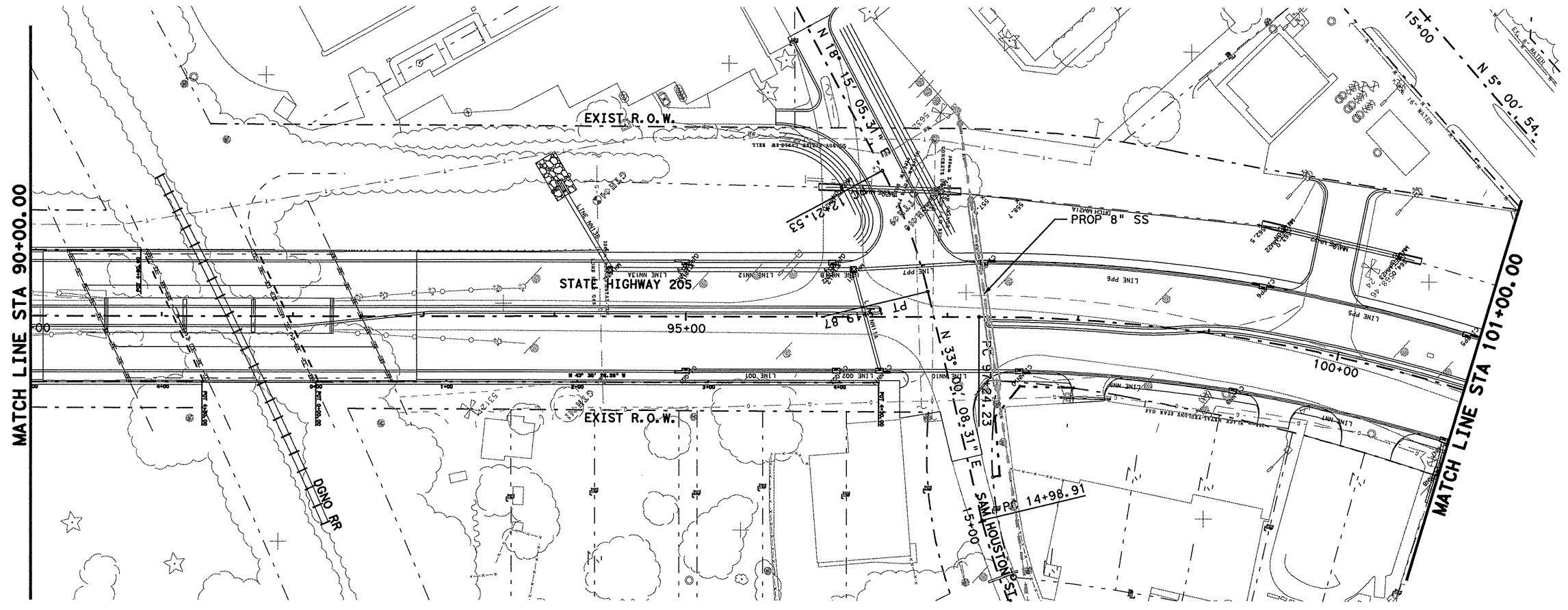
PLAN & PROFILE
 STA 79+00 TO 90+00

SHEET 9 OF 19

FED. RD. DIV. NO.	FEDERAL AID PROJECT NO.	HIGHWAY NO.
6	(SEE TITLE SHEET)	SH 205
STATE	DIST.	COUNTY
TEXAS	DALLAS	ROCKWALL
CONT.	SECT.	JOB
0451	01	032, ETC

SHEET NO.
518

DGN=C:\JOBS\22451C-SH205\J111\1\2451cwp09.dgn, ON=10-11, 13-62J
 3/22/2006 Plotted 22-MAR-2006 15:18



3-22-06

STATE OF TEXAS
 RICHARD T. GRICE
 37520
 REGISTERED PROFESSIONAL ENGINEER

Richard T. Grice

Parsons Brinckerhoff Quade & Douglas, Inc.
 2777 Stemmons Freeway
 Suite 1333
 Dallas, TX 75207

Texas Department of Transportation
 © 2006

SH 205

WATER LINE

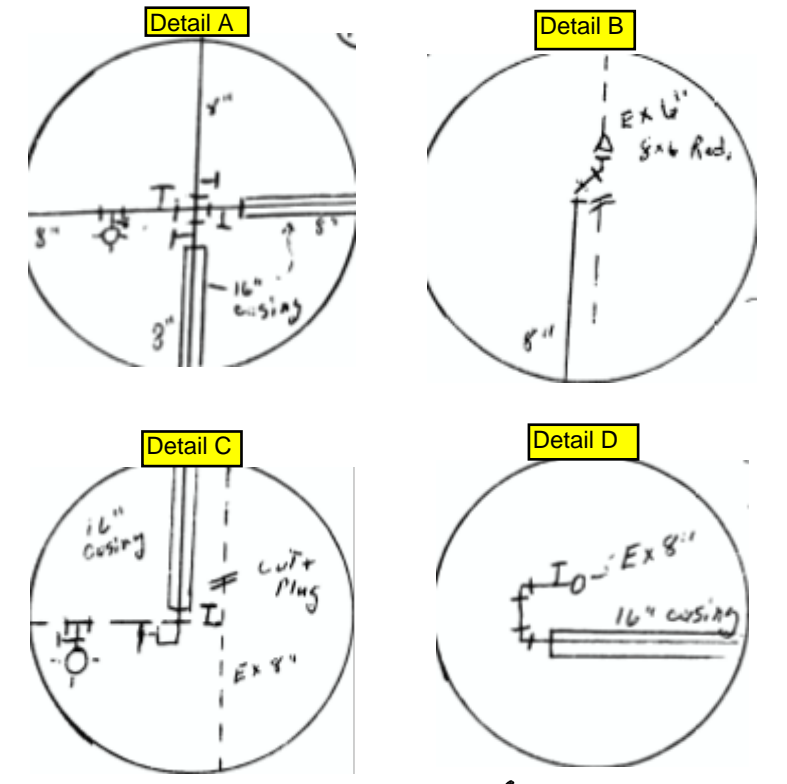
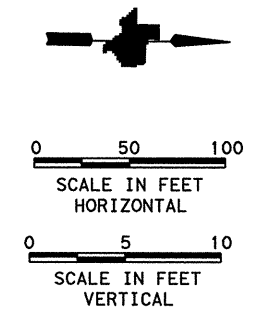
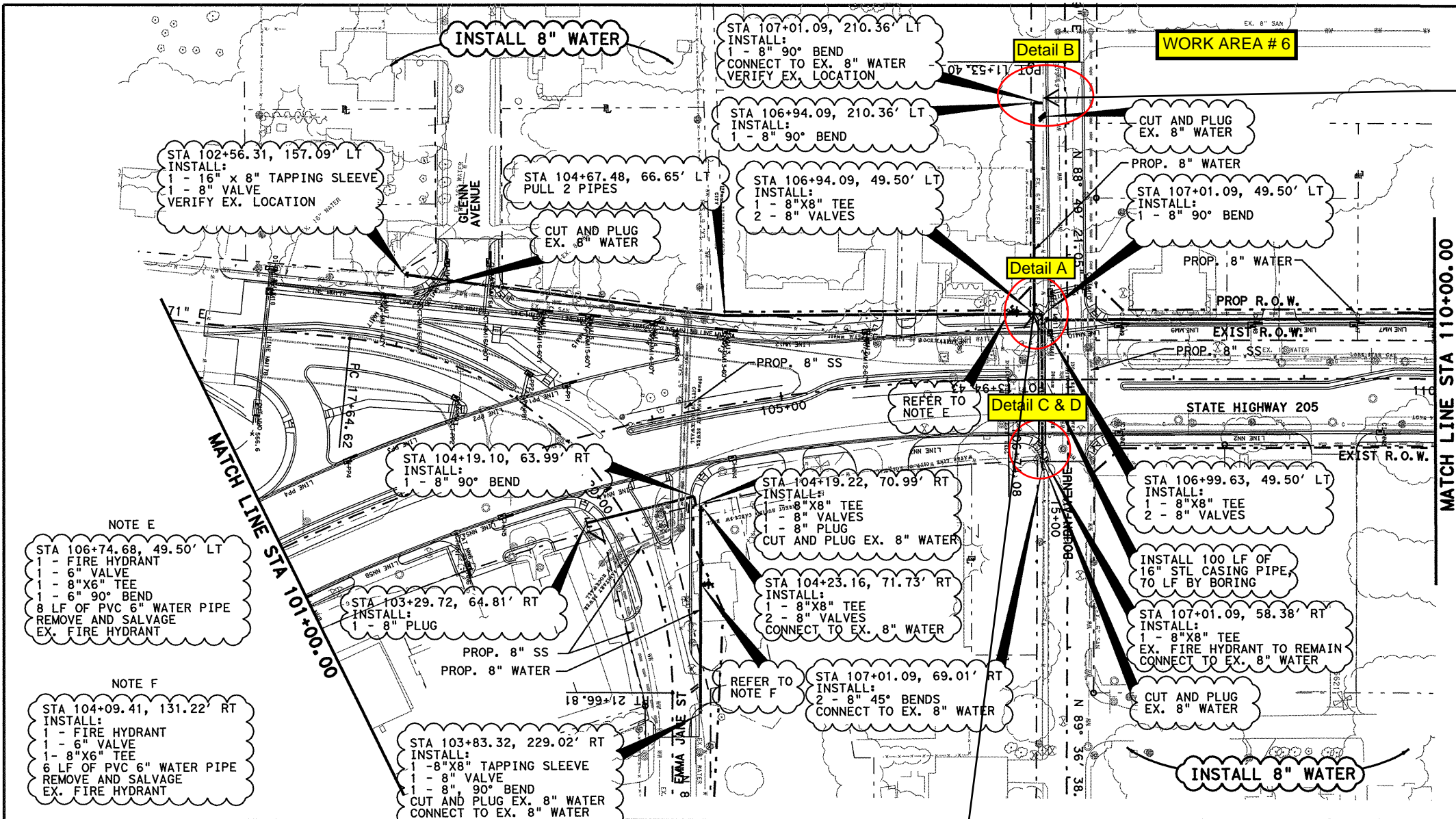
PLAN & PROFILE
 STA 90+00 TO 101+00

SHEET 10 OF 19

FED. RD. DIV. NO.	FEDERAL AID PROJECT NO.	HIGHWAY NO.
6	(SEE TITLE SHEET)	SH 205
STATE	DIST.	COUNTY
TEXAS	DALLAS	ROCKWALL
CONT.	SECT.	JOB
0451	01	032, ETC

519

DON:G:\JOBS\22451C-SH205\UFI\FY\2451wp10.dgn, ON=10-11, 13-621
 3/22/2006 Plotted 22-MAR-2006 15:18



NOTE E
 STA 106+74.68, 49.50' LT
 INSTALL:
 1 - FIRE HYDRANT
 1 - 6" VALVE
 1 - 8"X6" TEE
 1 - 6" 90° BEND
 8 LF OF PVC 6" WATER PIPE
 REMOVE AND SALVAGE
 EX. FIRE HYDRANT

NOTE F
 STA 104+09.41, 131.22' RT
 INSTALL:
 1 - FIRE HYDRANT
 1 - 6" VALVE
 1 - 8"X6" TEE
 6 LF OF PVC 6" WATER PIPE
 REMOVE AND SALVAGE
 EX. FIRE HYDRANT

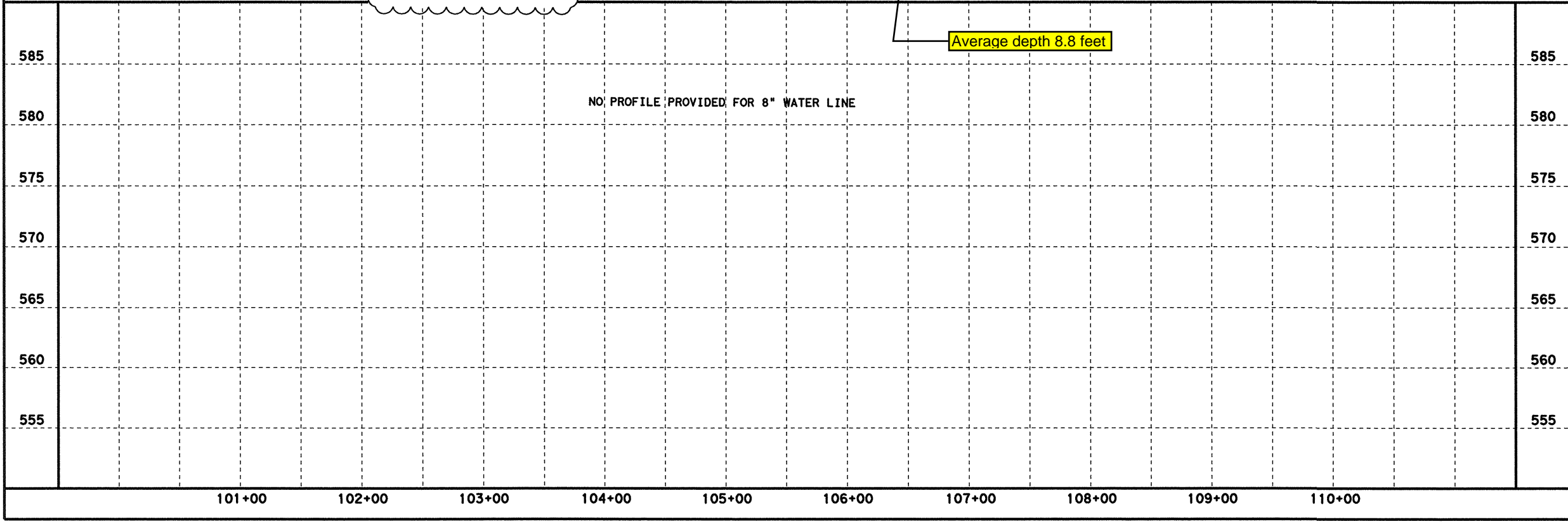
STA 103+83.32, 229.02' RT
 INSTALL:
 1 - 8"X8" TAPPING SLEEVE
 1 - 8" VALVE
 1 - 8" 90° BEND
 CUT AND PLUG EX. 8" WATER
 CONNECT TO EX. 8" WATER

STA 107+01.09, 69.01' RT
 INSTALL:
 2 - 8" 45° BENDS
 CONNECT TO EX. 8" WATER

STA 107+01.09, 58.38' RT
 INSTALL:
 1 - 8"X8" TEE
 EX. FIRE HYDRANT TO REMAIN
 CONNECT TO EX. 8" WATER

Average depth 8.8 feet

NO PROFILE PROVIDED FOR 8" WATER LINE



3-24-06

Richard T. Grice
 REGISTERED PROFESSIONAL ENGINEER

Parsons Brinckerhoff Quade & Douglas, Inc.
 2777 Stemmons Freeway
 Suite 1333
 Dallas, TX 75207

Texas Department of Transportation
 © 2006

SH 205

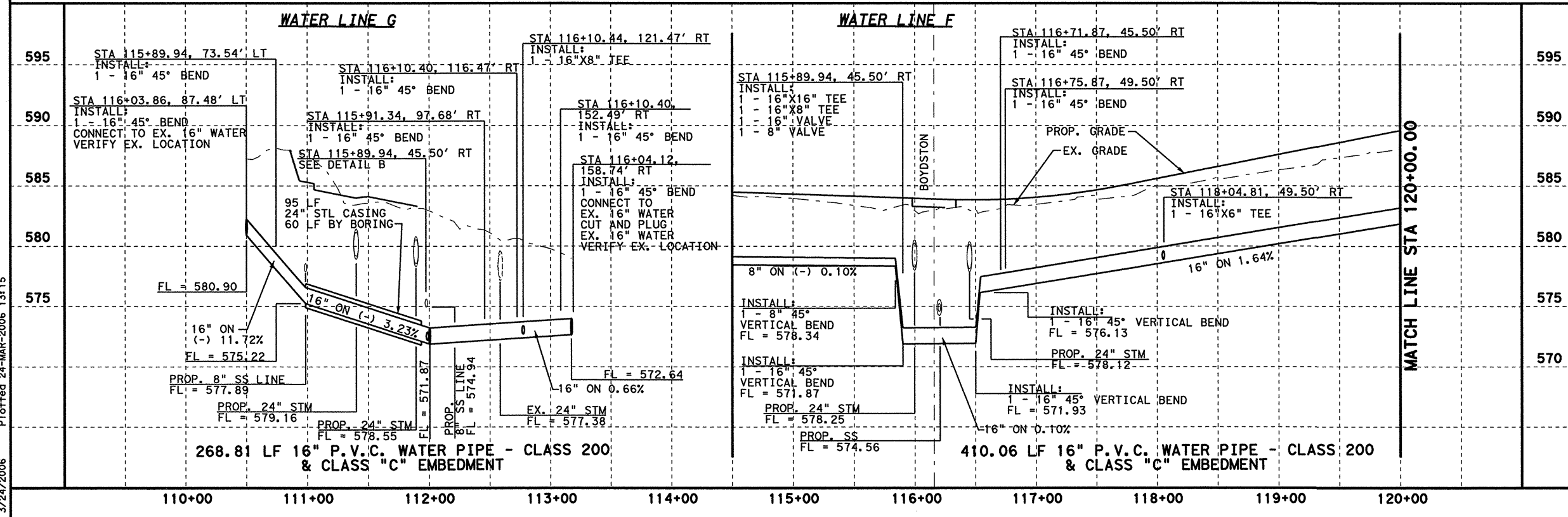
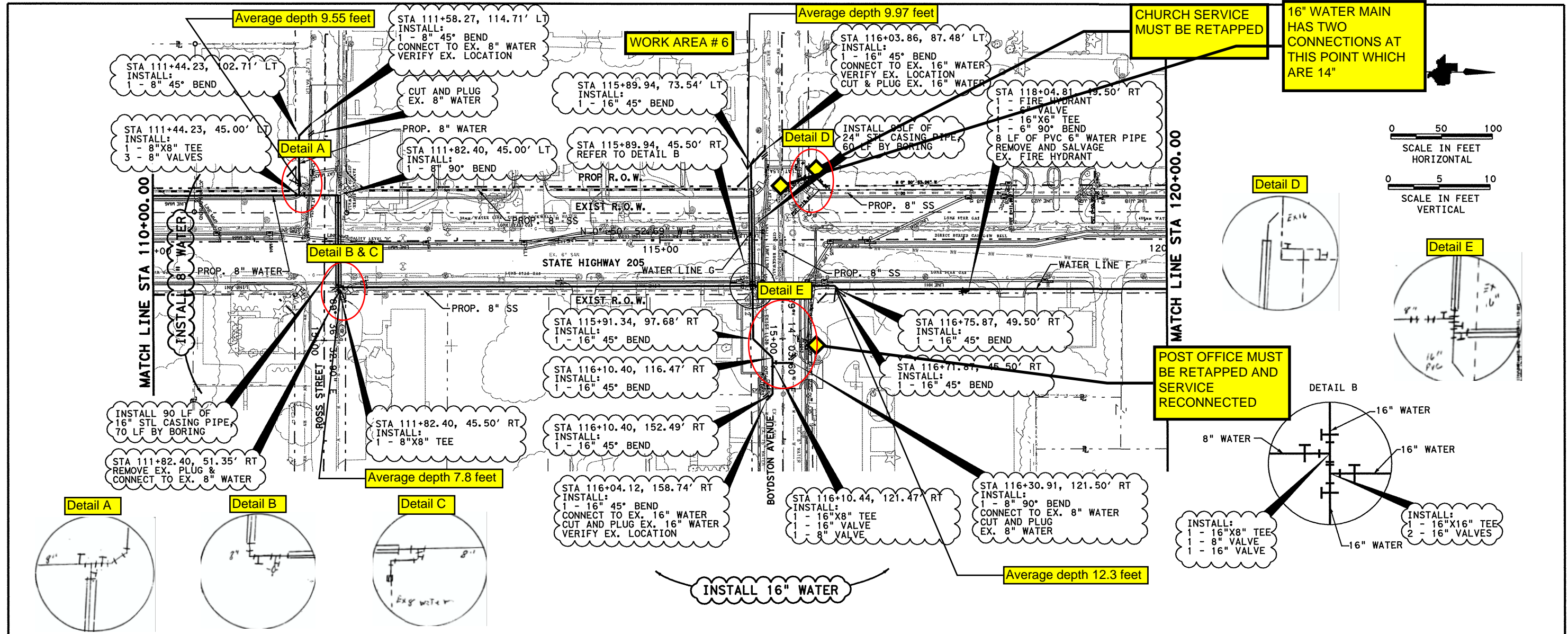
WATER LINE

PLAN & PROFILE
 STA 101+00 TO 110+00

SHEET 11 OF 19

FED. AID PROJ. NO.	6	FEDERAL AID PROJECT NO.	(SEE TITLE SHEET)	HIGHWAY NO.	SH 205
STATE	TEXAS	DIST.	DALLAS	COUNTY	ROCKWALL
CONT.	0451	SECT.	01	JOB	520
					032, ETC

DGN:G:\JOBS\22451C-SH205\U11\Hy2451.dwg, ON=10-11, 13-621
 3/24/2006 Plotted 24-Mar-2006 13:15



Professional Engineer Seal: 3-24-06, STATE OF TEXAS, RICHARD T. GRICE, 37520, PROFESSIONAL ENGINEER.

Parsons Brinckerhoff Quade & Douglas, Inc.
2777 Stemmons Freeway, Suite 1333, Dallas, TX 75207

Texas Department of Transportation
© 2006

SH 205

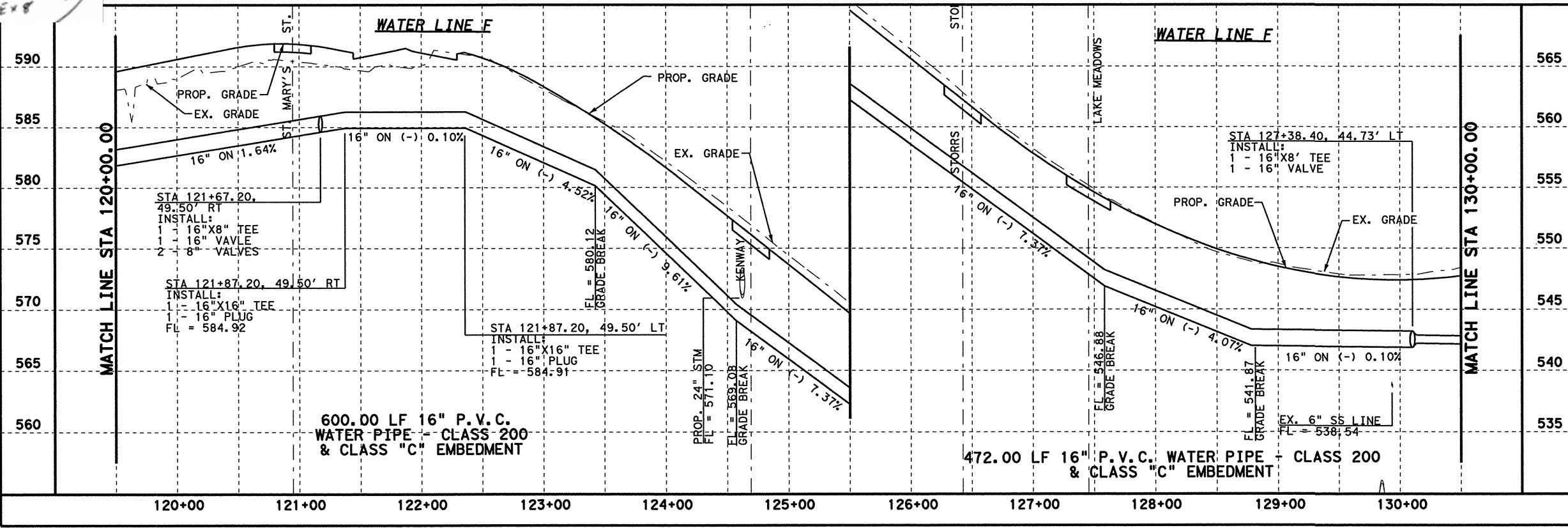
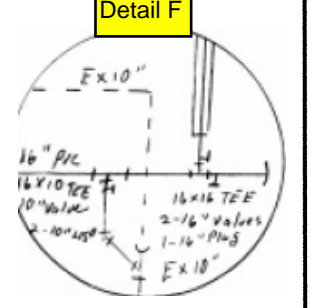
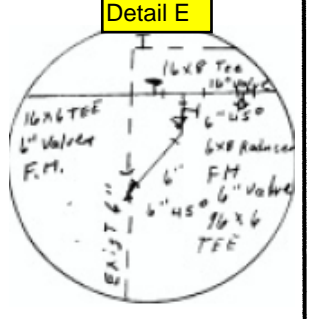
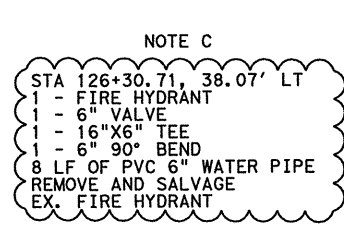
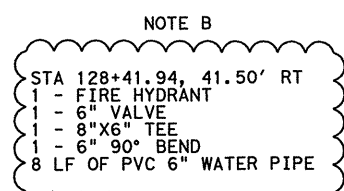
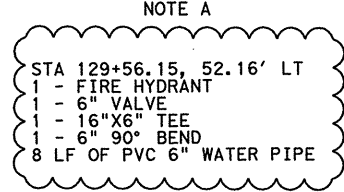
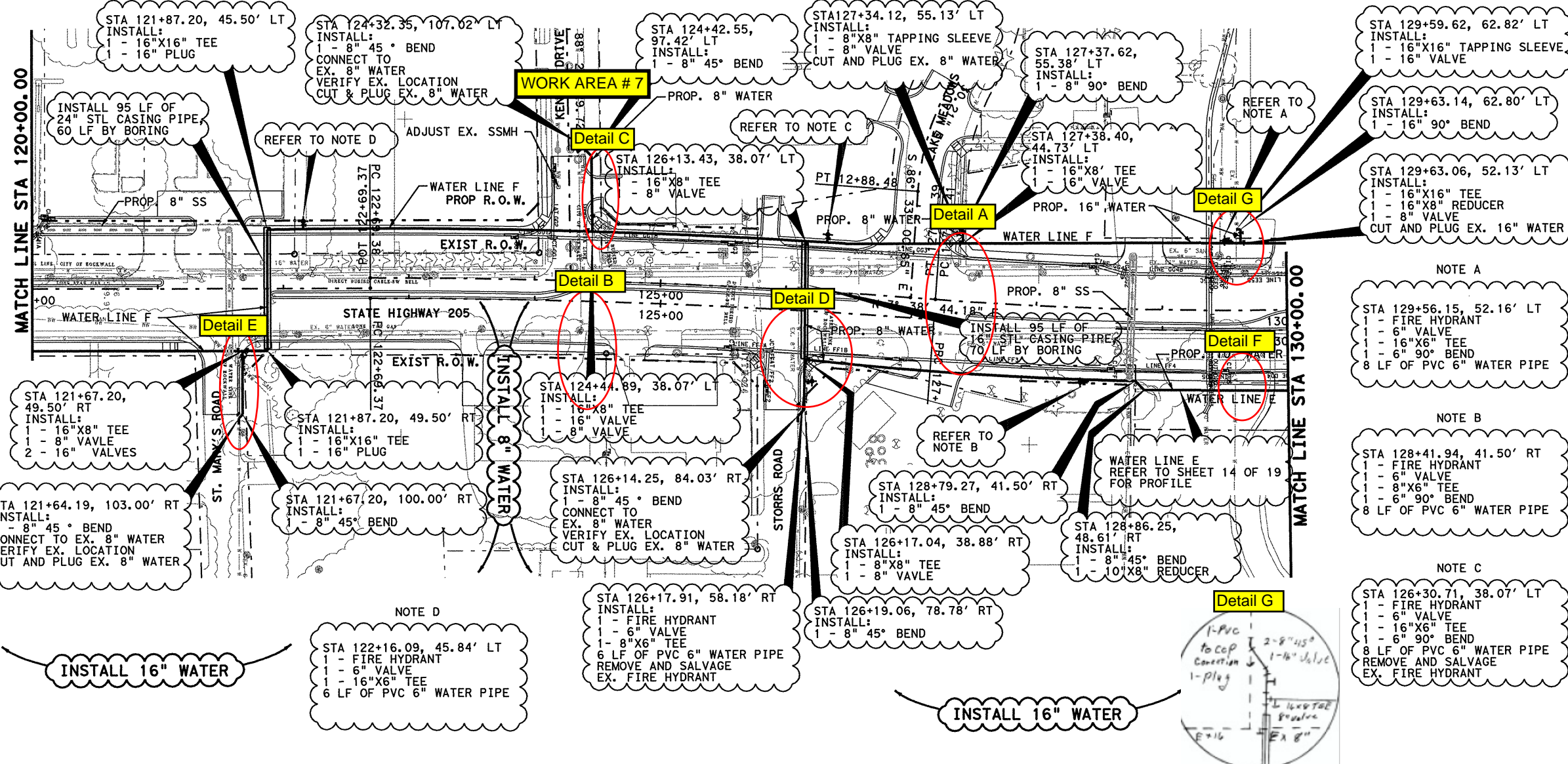
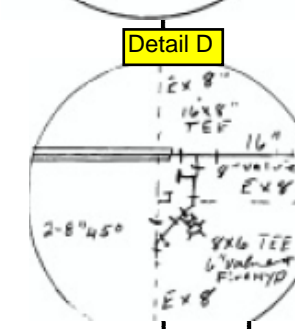
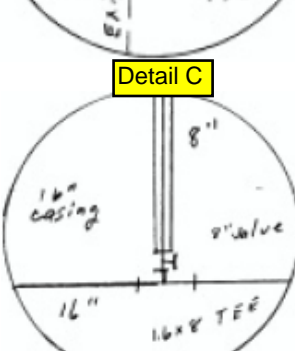
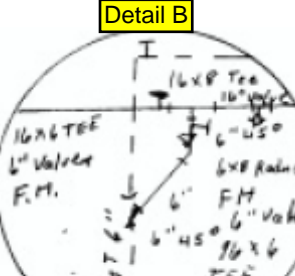
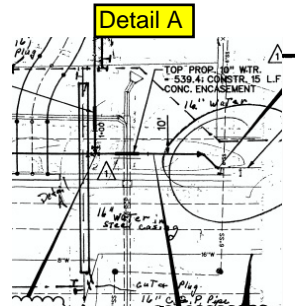
WATER LINE

PLAN & PROFILE
STA 110+00 TO 120+00

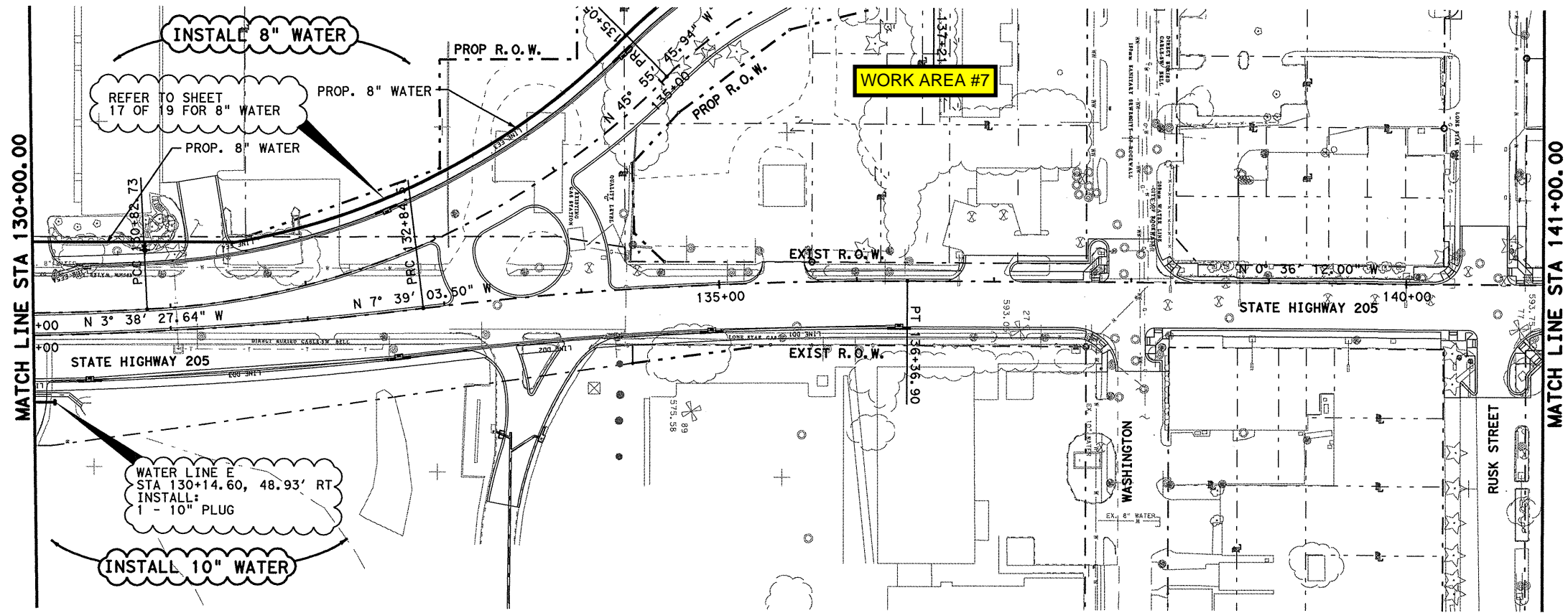
SHEET 12 OF 19

FED. RD. DIV. NO.	FEDERAL AID PROJECT NO.	HIGHWAY NO.
6	(SEE TITLE SHEET)	SH 205
STATE	DIST.	COUNTY
TEXAS	DALLAS	ROCKWALL
CONT.	SECT.	JOB
0451	01	032, ETC
		SHEET NO.
		521

DGN:G:\JOBS\22451C-SH205\U11\TX\2451comp12.dgn, ON=10-11, 13-623
 3/24/2006



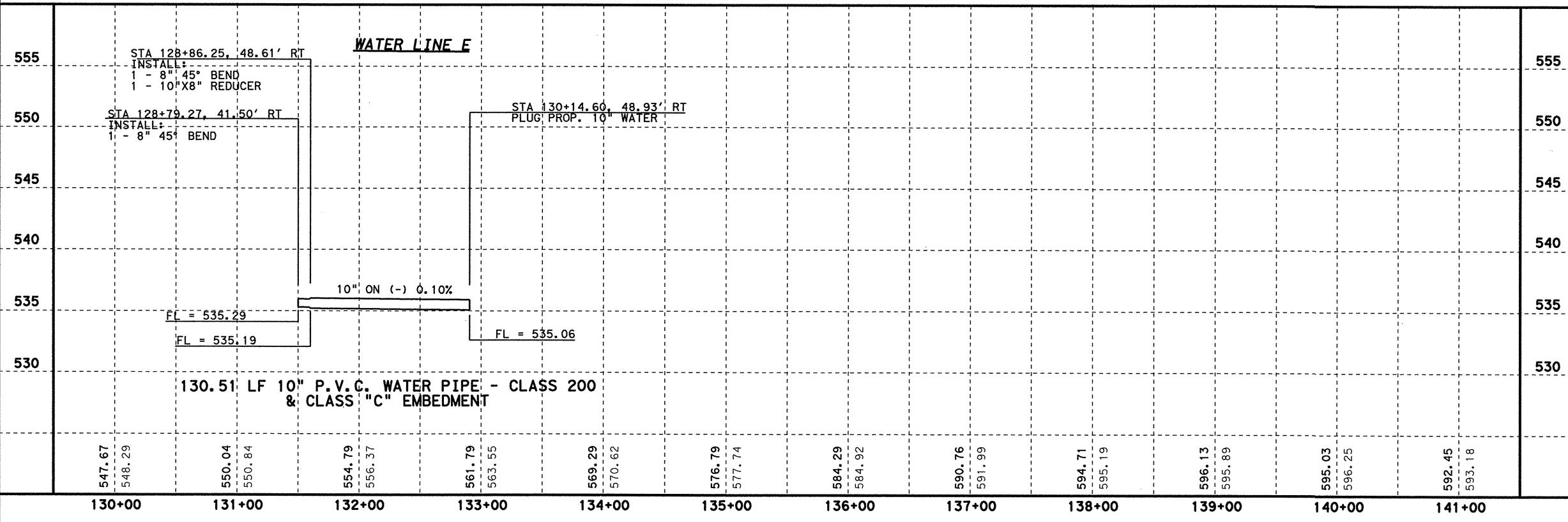
DGN=GS:\JOBS\22451C-SH205\UHF11\FY\2451\wp13.dgn, ON=10-11, 13-623
 3/24/2006 Plotted 24-MAR-2006 13:15



0 50 100
SCALE IN FEET
HORIZONTAL

0 5 10
SCALE IN FEET
VERTICAL

DGN=6:\JOBS\22451C-SH205\UHT\11\Y2451\wp14.dgn, ON=10-11, 13-623
 3/22/2006 Plotted 22-MAR-2006 15:19



3-22-06

Richard T. Grice

PB Parsons Brinckerhoff Quade & Douglas, Inc.
 2777 Stemmons Freeway
 Suite 1333
 192 Dallas, TX 75207

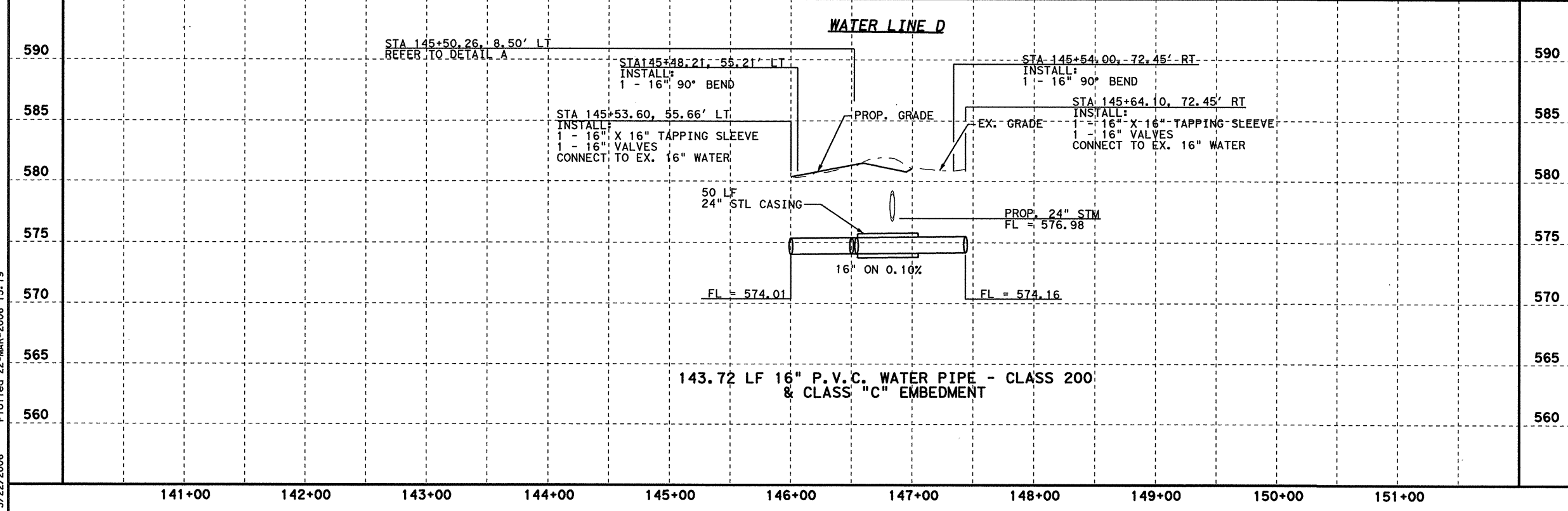
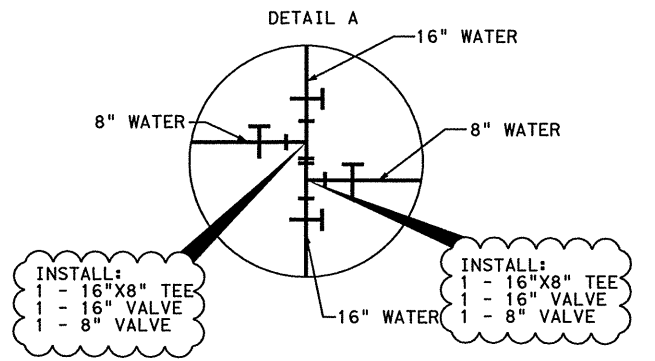
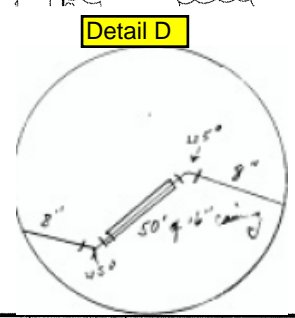
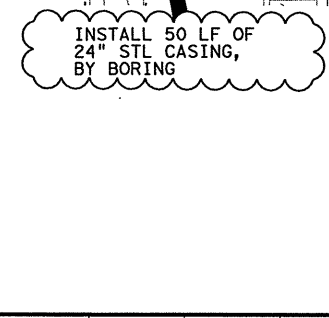
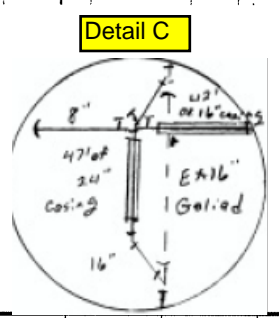
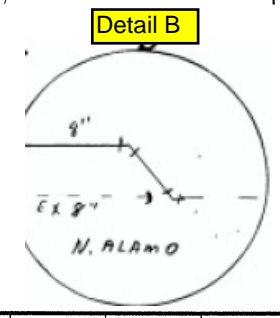
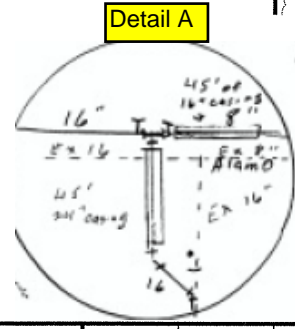
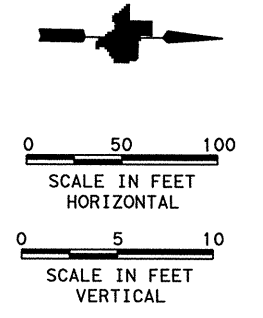
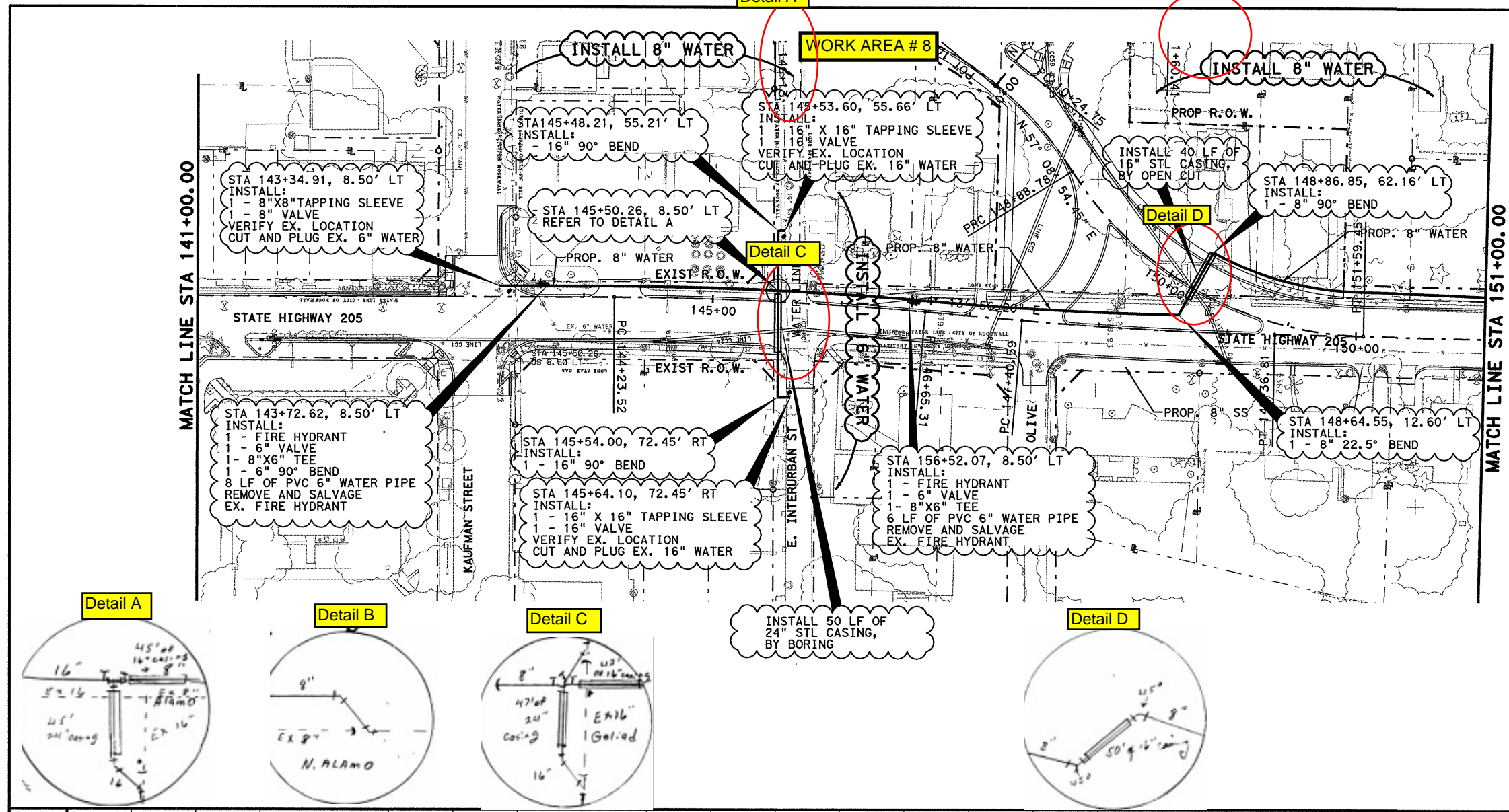
Texas Department of Transportation
 © 2006

SH 205

WATER LINE
 NB COUPLET
 PLAN & PROFILE
 STA 130+00 TO 141+00

SHEET 14 OF 19

FED. RD. DIV. NO.	FEDERAL AID PROJECT NO.	HIGHWAY NO.
6	(SEE TITLE SHEET)	SH 205
STATE	DIST.	COUNTY
TEXAS	DALLAS	ROCKWALL
CONT.	SECT.	JOB
0451	01	032, ETC
		SHEET NO.
		523



3-22-06

Richard T. Grice
REGISTERED PROFESSIONAL ENGINEER

Parsons Brinckerhoff Quade & Douglas, Inc.
2777 Stemmons Freeway
Suite 1333
189 Dallas, TX 75207

Texas Department of Transportation
© 2006

SH 205

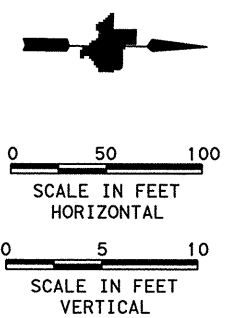
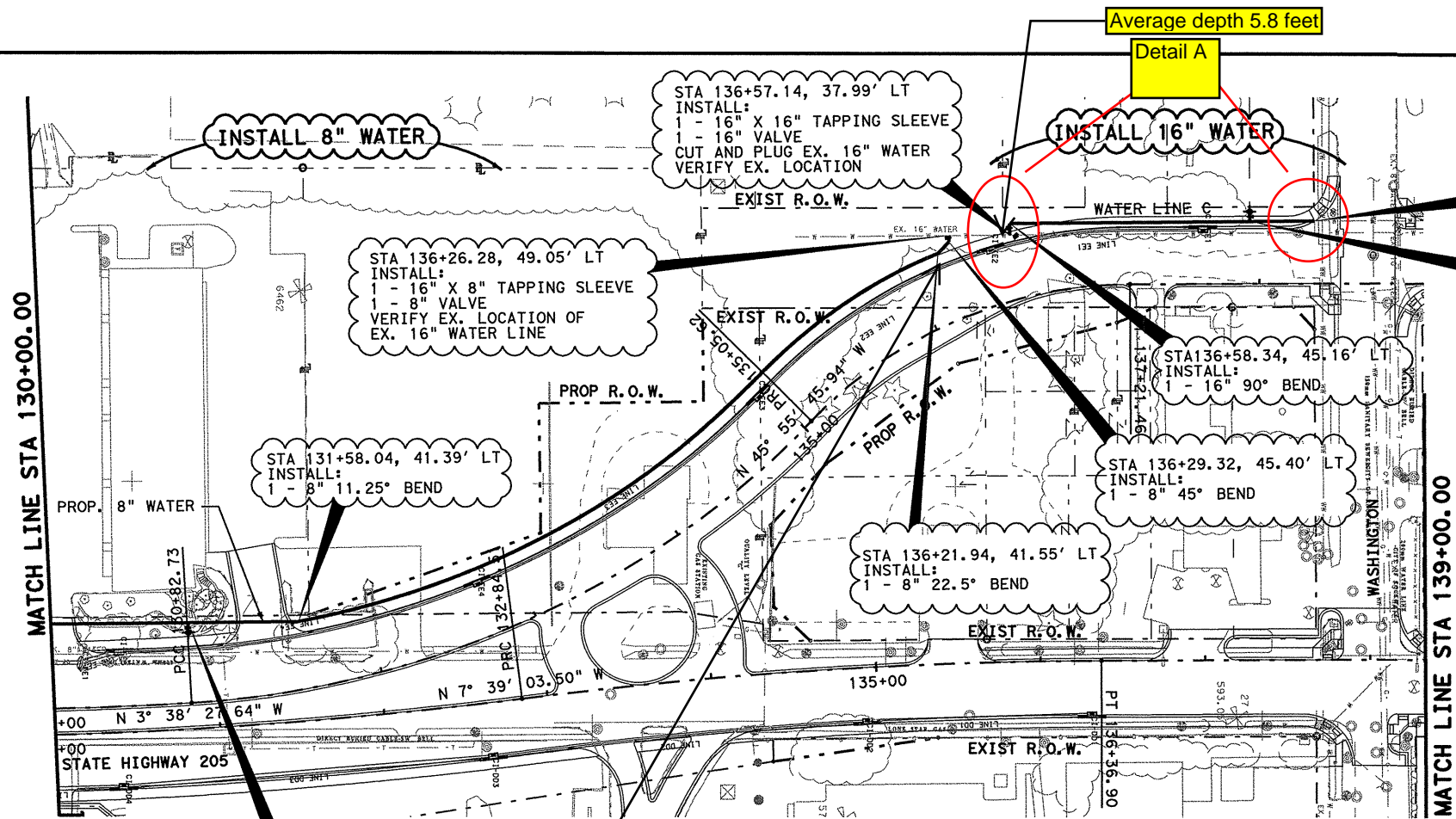
WATER LINE
NB COUPLET
PLAN & PROFILE
STA 141+00 TO 151+00

SHEET 15 OF 19

FED. RD. DIV. NO.	FEDERAL AID PROJECT NO.	HIGHWAY NO.
6	(SEE TITLE SHEET)	SH 205
STATE	DIST.	COUNTY
TEXAS	DALLAS	ROCKWALL
CONT.	SECT.	JOB
0451	01	032, ETC

524

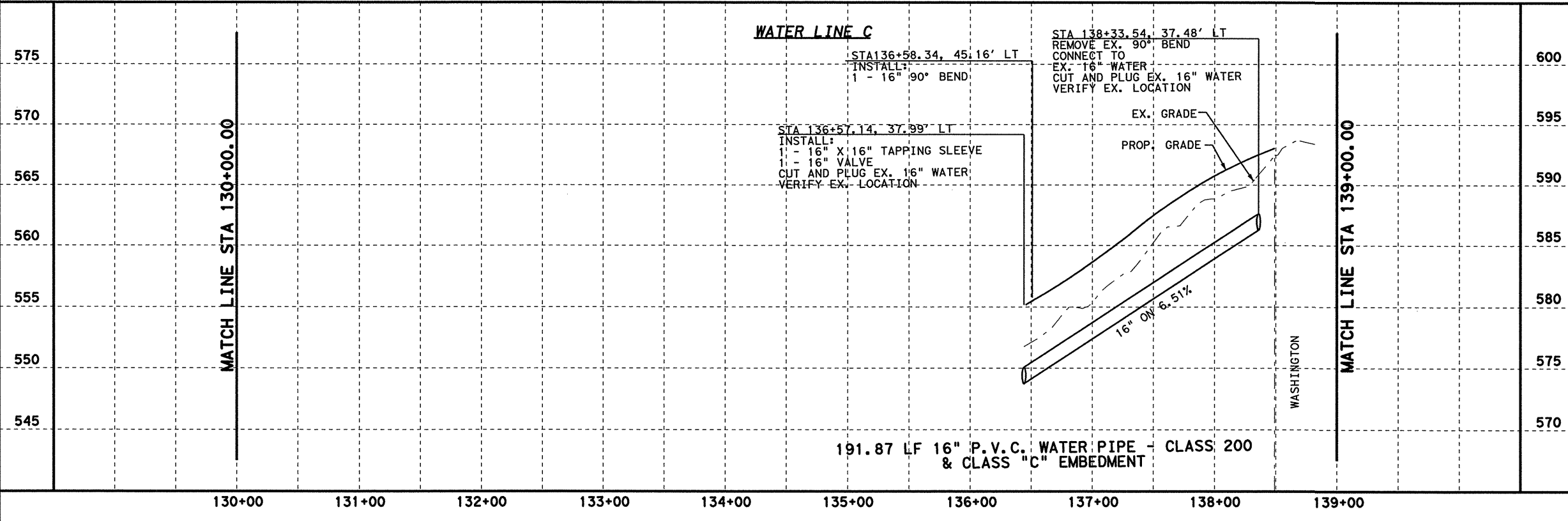
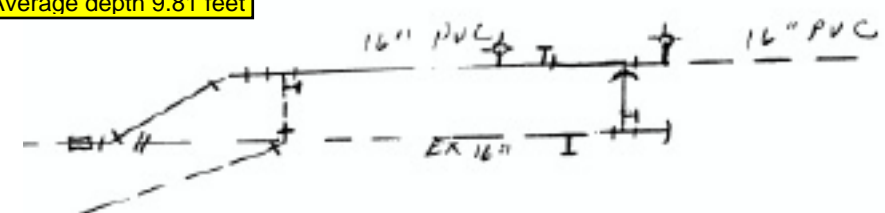
DGN: G:\JOBS\22451C-SH205\U111\Y2451\wp15.dgn, ON: 10-11, 13-621
 3/22/2006 Plotted 22-MAR-2006 15:19



STA 130+83.60, 48.93' LT
INSTALL:
1 - FIRE HYDRANT
1 - 6" VALVE
1 - 8" X 6" TEE
6 LF OF PVC 6" WATER PIPE
REMOVE AND SALVAGE EX. FIRE HYDRANT

Average depth 9.81 feet

Detail A



3-22-06

Richard T. Grice
REGISTERED PROFESSIONAL ENGINEER
37520

Parsons Brinckerhoff Quade & Douglas, Inc.
2777 Stemmons Freeway
Suite 1333
192 Dallas, TX 75207

Texas Department of Transportation
© 2006

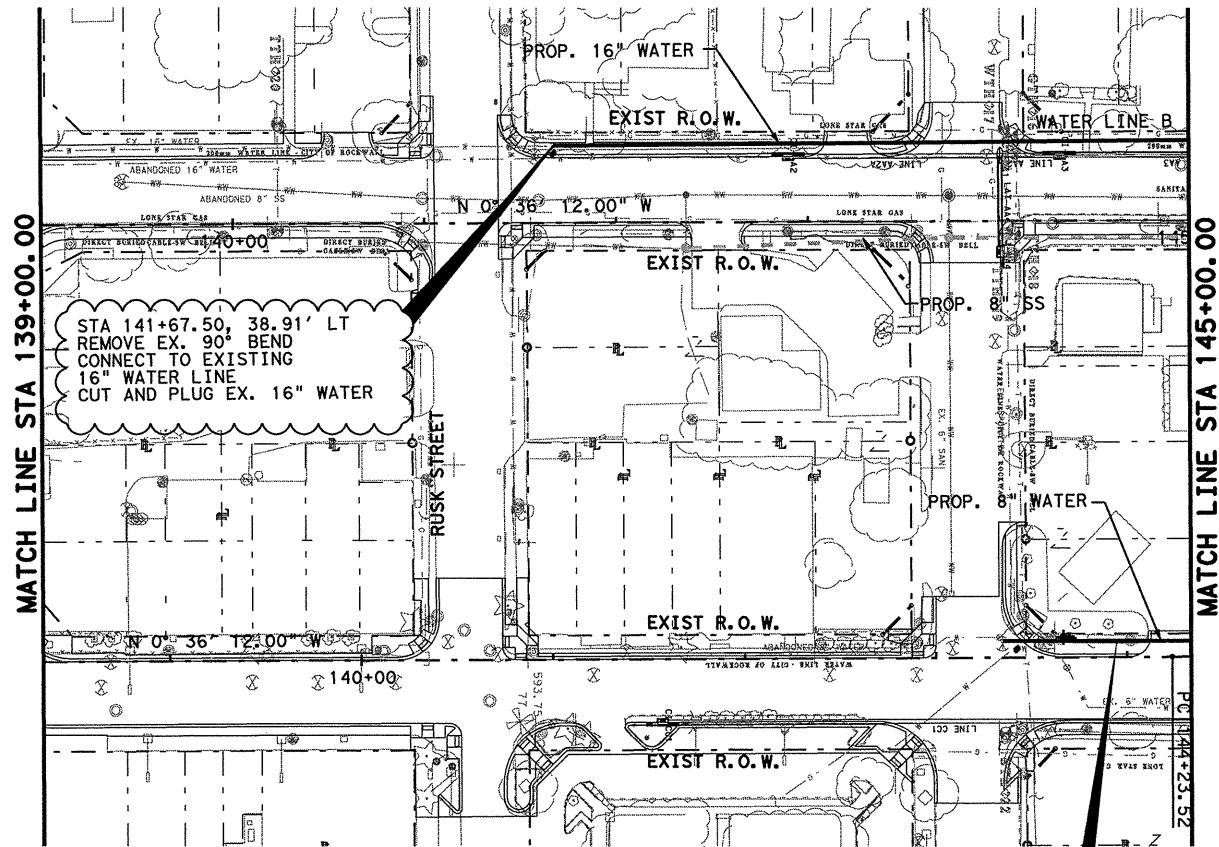
SH 205

WATER LINE
SB COUPLER
PLAN & PROFILE
STA 130+00 TO 139+00

SHEET 17 OF 19

FED. RD. DIV. NO.	FEDERAL AID PROJECT NO.	HIGHWAY NO.
6	(SEE TITLE SHEET)	SH 205
STATE	DIST.	COUNTY
TEXAS	DALLAS	ROCKWALL
CONT.	SECT.	JOB
0451	01	032, ETC
		SHEET NO.
		526

DGN=61 JOBS\224510-SH205\H111\X2451\wp17.dgn, ON=EO-11, 13-62J
 3/22/2006 Plotted 22-MAR-2006 15:19

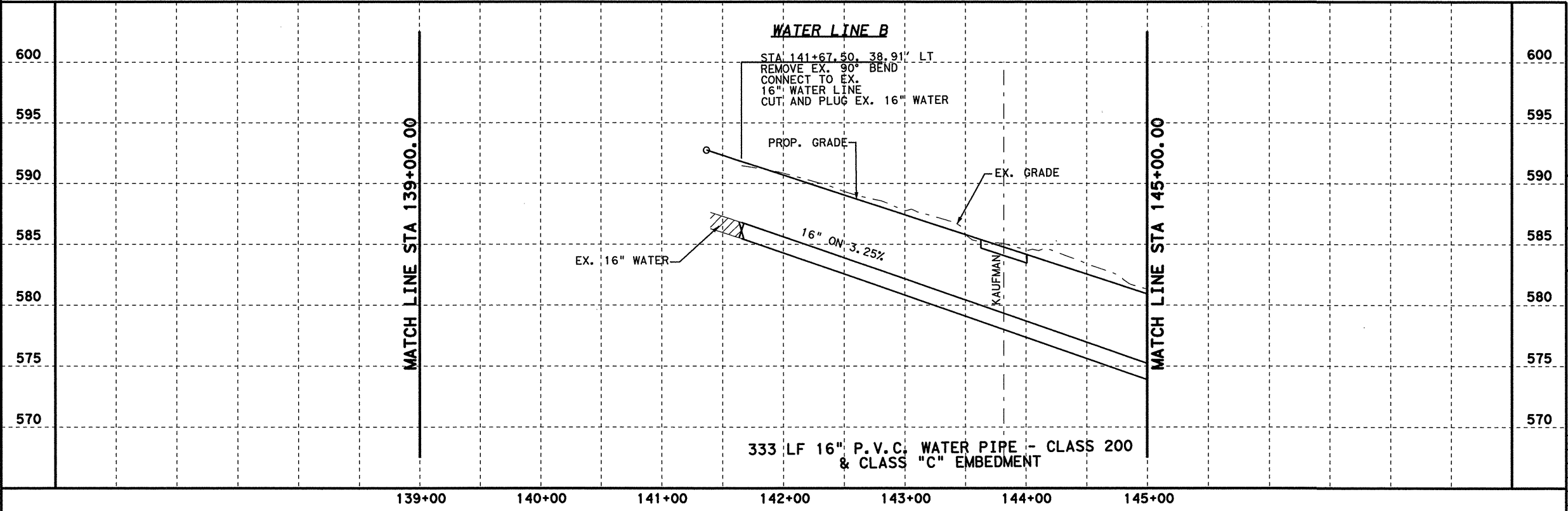


0 50 100
SCALE IN FEET
HORIZONTAL

0 5 10
SCALE IN FEET
VERTICAL

REFER TO SHEET
15 OF 19 FOR 8" WATER

DGN=C:\JOBS\22451C-SH205\U111\FY\2451\wp18.dgn, ON=LO-11, 13-621
 3/22/2006 Plotted 22-MAR-2006 15:19



3-22-06

STATE OF TEXAS
★
RICHARD T. GRICE
37520
REGISTERED PROFESSIONAL ENGINEER

Richard T. Grice

PB Parsons Brinckerhoff Quade & Douglas, Inc.
2777 Stemmons Freeway
Suite 1333
192 Dallas, TX 75207

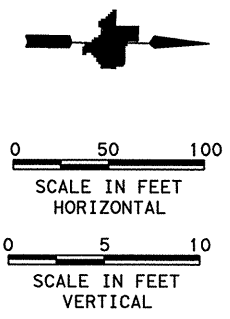
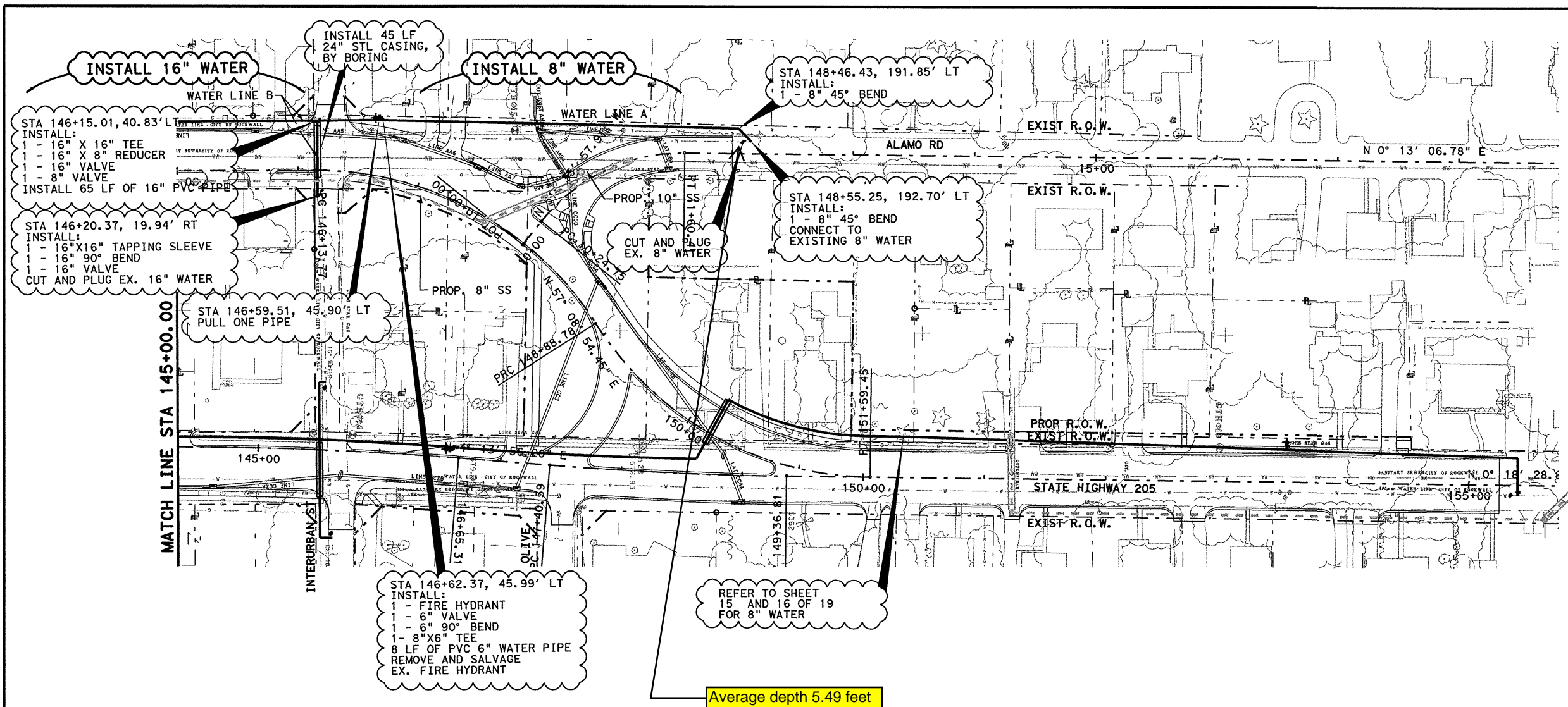
T Texas Department of Transportation
© 2006

SH 205

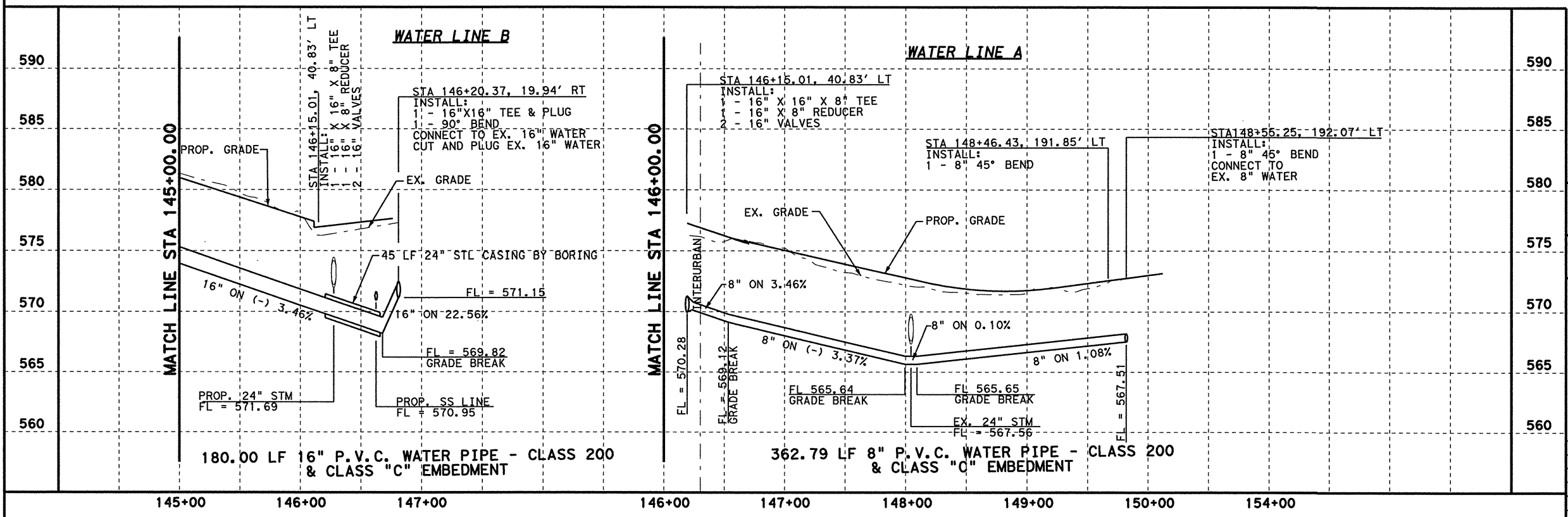
WATER LINE
SB COUPLER
PLAN & PROFILE
STA 139+00 TO 145+00

SHEET 18 OF 19

FED. AID DIST. NO.	FEDERAL AID PROJECT NO.	HIGHWAY NO.
6	(SEE TITLE SHEET)	SH 205
STATE	DIST.	COUNTY
TEXAS	DALLAS	ROCKWALL
CONT.	SECT.	JOB
0451	01	032, ETC



Average depth 5.49 feet



3-22-06

Richard T. Grice

Parsons Brinckerhoff Quade & Douglas, Inc.
 2777 Stemmons Freeway
 Suite 1333
 192 Dallas, TX 75207

Texas Department of Transportation
 © 2006

SH 205

WATER LINE
 SB COUPLET
 PLAN & PROFILE
 STA 145+00 TO END OF PROJECT

SHEET 19 OF 19

FED. RD. DIV. NO.	FEDERAL AID PROJECT NO.	HIGHWAY NO.
6	(SEE TITLE SHEET)	SH 205
STATE	DIST.	COUNTY
TEXAS	DALLAS	ROCKWALL
CONT.	SECT.	JOB
0451	01	032, ETC

DGN=6: \JOBS\22451C-SH205\UT\11\X\2451\cwp19.dgn, ON=LO-11, 13-62J
 3/22/2006 Plotted 22-MAR-2006 15:19