

FED. ROAD DIST. NO.	STATE	FEDERAL AID PROJECT NO.	SHEET NO.
6	TEXAS		1
STATE DIST. NO.	COUNTY	STATE CONTROL NO.	HIGHWAY NO.
18	ROCKWALL	451-1	S.H.205

4

STATE OF TEXAS
 STATE DEPARTMENT OF HIGHWAYS
 AND PUBLIC TRANSPORTATION

PLAN OF PROPOSED
 RIGHT OF WAY PROJECT

S. H. 205

ACCOUNT NO. 451-1

ROCKWALL COUNTY

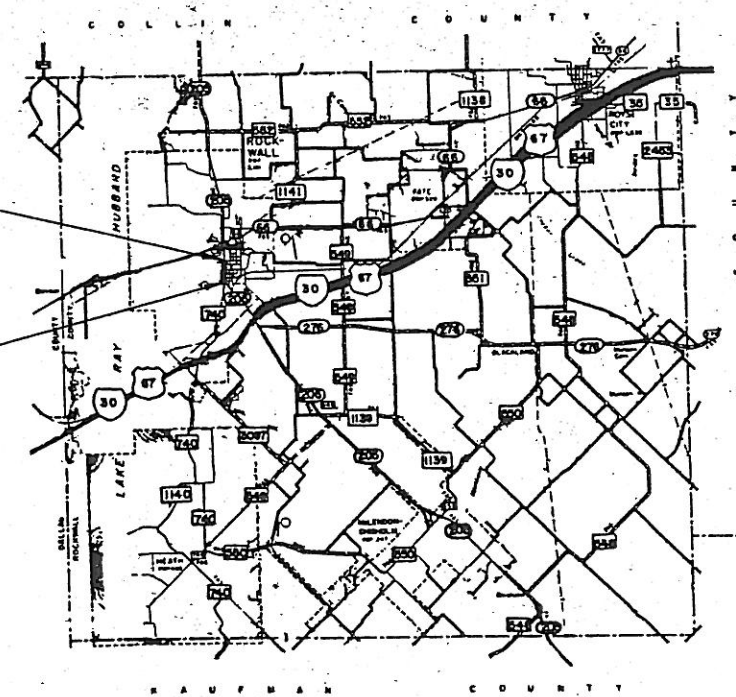
FROM: BOWEN STREET IN THE CITY OF ROCKWALL
 TO: WASHINGTON STREET

SCALE: 1" = 100'
 NET LENGTH OF PROJECT = 3,066.80 FT. = 0.581 MI.

EQUATION: STA. 536+01 BACK
 STA. 536+30.4 AHEAD

END PROJECT
 STATION 566+56
 END ACCOUNT C.451-1

BEGIN PROJECT
 STATION 535+59.80
 BEGIN ACCOUNT C. 451-1



MAP REPRODUCED
 12 APRIL 1982

NOTE: THIS R.O.W. MAP
 CONSTRUCTED FROM
 DEEDS FILED IN THE
 ROCKWALL CO. COURTHOUSE

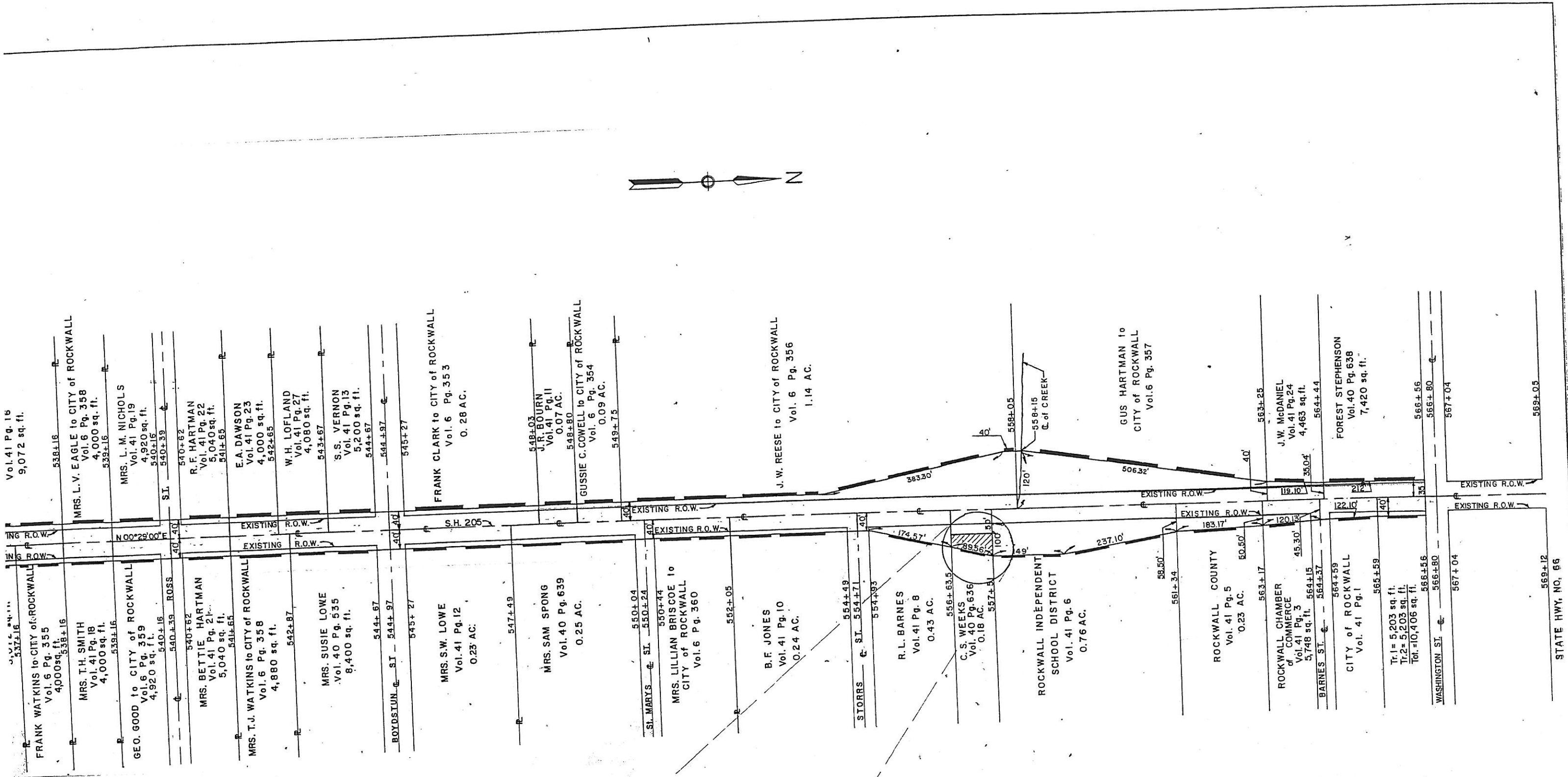
- CONVENTIONAL SIGNS
- STATE OR NATIONAL LINE
 - CITY OR VILLAGE LINE
 - COUNTY LINE
 - BASE OR SURVEY LINE
 - RIGHT OF WAY LINE
 - RIGHT OF WAY MARKING
 - FENCE LINE
 - RAILROAD
 - TRAVELLED WAY
 - CULVERT OR BRIDGE
 - POWER LINE

CORRECT: _____
 SIGNED _____
 T
 R.O.W. ENGINEER

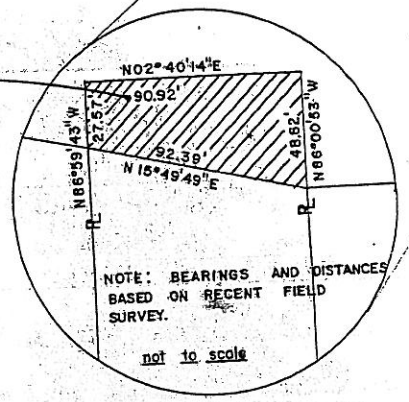
APPROVED: _____
 SIGNED _____
 DISTRICT ENGINEER

DEPARTMENT OF TRANSPORTATION
 FEDERAL HIGHWAY ADMINISTRATION

APPROVED: _____



STATE OF TEXAS
TO
PEOPLES REALTORS, INC.
QUITCLAIM
V. 195 P.580



NOTE: BEARINGS AND DISTANCES
BASED ON RECENT FIELD
SURVEY.

not to scale

DETAIL

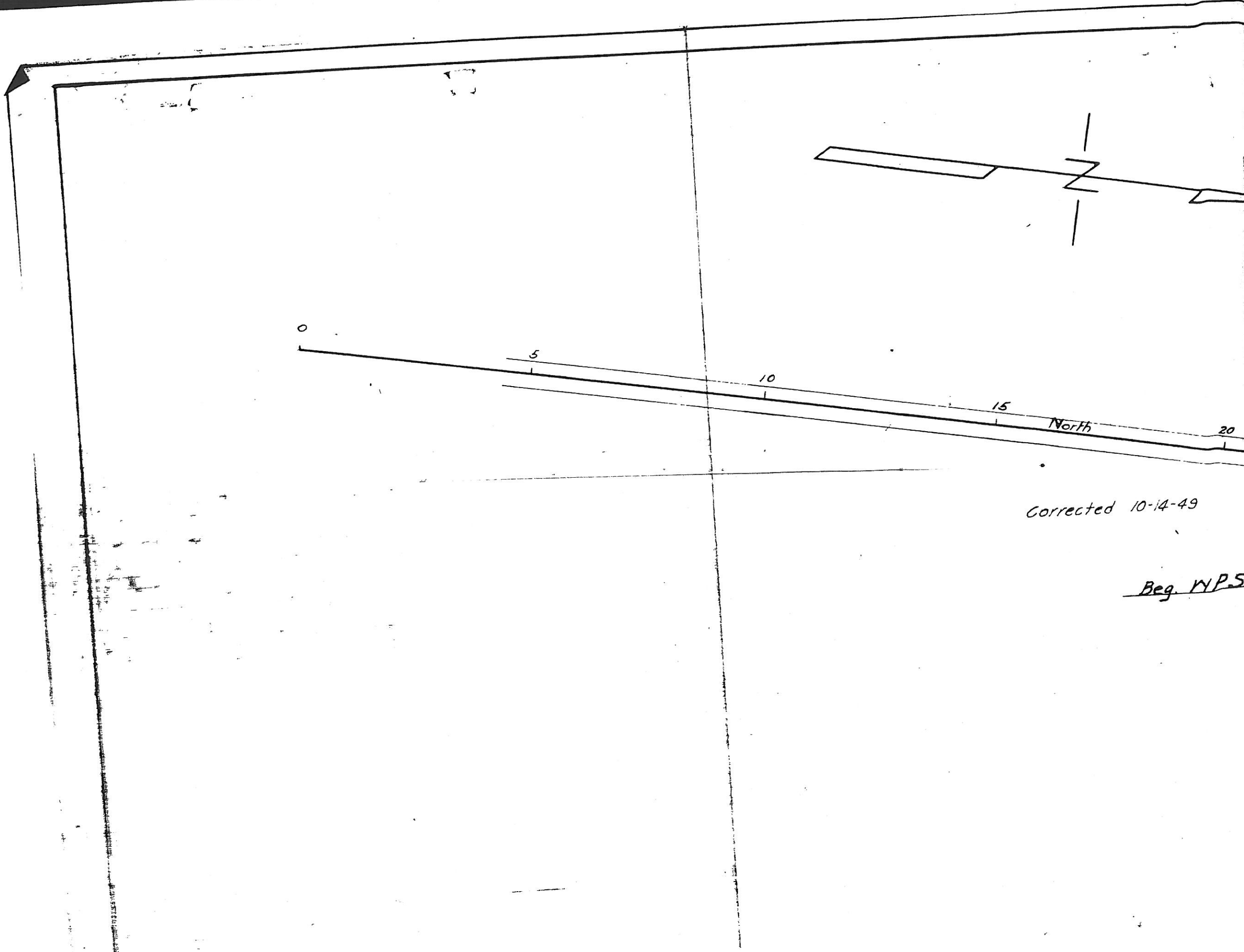
SCALE: 1" = 100'

NOTE: THIS R.O.W. MAP
CONSTRUCTED FROM
DEEDS FILED IN THE
ROCKWALL CO. COURTHOUSE

REV. MAY 4, 1984

FED. RD. DIV. NO.	STATE	FEDERAL PROJECT NO.	SHEET NO.
6	TEXAS		2

4 1/2



Corrected 10-14-49

Reg. W.P.S.

Change Scale

1" = 200'
1" = 400'

C-451-4-3
O. O. Scott, Easement
Sta 33+00 to Sta 35+69 Lt.
0.309 Acres
Vol. 45 Page 183

P.I. 37+33³
Δ = 15°42' Lt.
D = 1°30'
T = 526.6'
L = 1046.7'

C-451-4-3
James F. Collins, Easements

Tract	Acres	Station
#1	0.265	35+69 to 38+00 Lt.
#2	0.172	43+89 Lt.
#3	0.172	52+00 Lt.
#4	0.086	51+75 to 53+00 Rt.
#5	0.275	62+07.5 Lt.

Total Ac. = 0.970
Vol. 45 Page 224

C-451-4-3
E.C. Heath Est. Easement
Sta. 62+07.5 Lt.
0.275 Acres
Vol. 45 Page 516

J. H. B. JONES SUR. AB. NO. 124,

C-451-4-3
H. D. Bedd
Sta 76+
0.057
Vol. 45 Page

Mrs. Ida A. Heath
Sta. 64+00 to 74+19
Vol. 32 Page 525-6
2.6 Acres

Mrs. Sallie Walker
Sta. 62+02 to 64+00
Vol. 32 Page 530-1
Deed 0.45 Acres
Easement 0.23
Vol. 32 Page 536-7

W. S. Collins
Sta. 35+72 to 62+02
Vol. 32 Page 523-4-5
Deed 6.58 Acres
Easement 0.23 Acres
Vol. 32 Page 536

S. S. McCURRY SUR. AB. NO. 146

917A
Street
Sta. 24+04.9
Δ = 1°03' R
Sta. 27+88
John Barnes
Vol. 32 Page 518-19
0.16 Acres
Sta. 27+88
J. H. Cade
Vol. 32 Page 520-21
0.20 Acres
O. O. Scott
Vol. 32 Page 521-2
0.05 Acres
Rockwall City Limits
Sta. 26+81 to Sta. 31+00
W. D. Austin
Vol. 32 Page 519-20
0.49 Acres
H. C. Willis Et. Al.
Vol. 32 Page 522-23
0.92 Acres
C-451-4-3
H. C. Willis, Easement
Sta. 35+69 Rt.
0.037 Acres
Vol. 45 Page 376

Present County Road

County Road

Survey Line

SAMUEL KING SUR. AB. NO. 131

W.T. DEWEESE SUR. AB. NO. 71

T.R. BAILEY SUR. AB. NO. 30

4-3
field, Easement
Lt.
res
167

J. S. McDaniel

R.A. Frazier

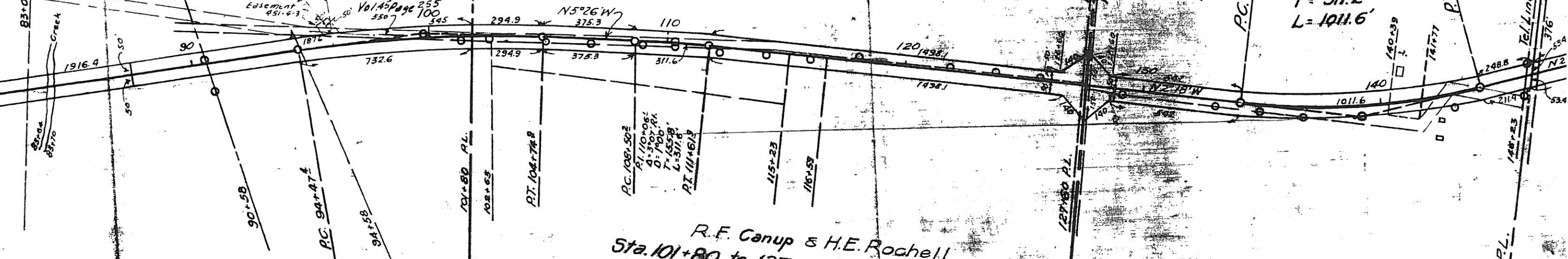
96+35-Sta 101+80
Vol. 32 Page 527-8
0.32 Acres

by Road



Unn. B. Peddie, Easement
Sta. 96+00 Lt.
0.057 Acres
Vol. 45 Page 255

P.I. 139+13.2
 $\Delta = 20^{\circ}14' Lt.$
 $D = 2^{\circ}00'$
 $T = 511.2'$
 $L = 1011.6'$



Underwood & Bob Maclin
Sta. 74+19 to 101+80
Vol. 32 Page 526-7
6.14 Acres

P.I. 99+62.5
 $\Delta = 10^{\circ}16'30" Rt.$
 $D = 1^{\circ}00'$
 $T = 515.1'$
 $L = 1027.5'$

R.F. Canup & H.E. Rochell
Sta. 101+80 to 127+60
Vol. 32 Page 531-2-3
3.08 Acres

R.A. Frazier
Sta. 101+80 to 146+43.7
Vol. 32 Page 528-9-530
7.74 Acres

County Road

C-451-4-3
 W. P. Hickman, Easement
 Sta. 158+00 to Sta. 159+00 Lt
 Vol. 45 Page 322
 0.069 Acres

John Orr
 Sta. 156+68.5 to 169+11
 Vol. 32 Page 533-4
 1.14 Acres
 W. P. Hickman
 Deed - Extra R/W
 158+00 to 165+00
 Vol. 43 - Page 277
 0.20911 Ac. Present County Road

P.I. 156+68.5
 $\Delta = 19^{\circ}56' \text{ Rt.}$
 $D = 2^{\circ}00'$
 $T = 503.5'$
 $L = 996.7'$

Easement - J.W. Reese
 Sta. 188+50 to Sta. 189+95 Lt. & Sta. 188+50
 Rt. to Sta. 190+50 Rt. 0.872 Acres
 Vol. 45 Page 406

Mrs. A.W. Hancock Et. Al.
 Sta. 146+43.7 to 189+95
 Vol. 32 Page 534-5
 8.85 Acres
 A.W. Hancock Estate
 Deed - Extra R/W
 159+00 to 166+00
 Vol. 43 - Page 377
 0.2855 Ac.
 JOSEPH STRICKLAND SUR. AB. NO. 187

ROCKWALL COUNTY
 COLLIN COUNTY

ROCKWALL COUNTY
 RIGHT OF WAY
 ROCKWALL COUNTY
 FROM ROCKWALL N.C.E.
 TEXAS HIGHWAY DEPT.
 S.J. TREADAWAY
 TERRELL TEXAS
 SCALE: AS SHOWN

WPSO 917A - Control

W & W FORD SURVEY
Abs. No. 80

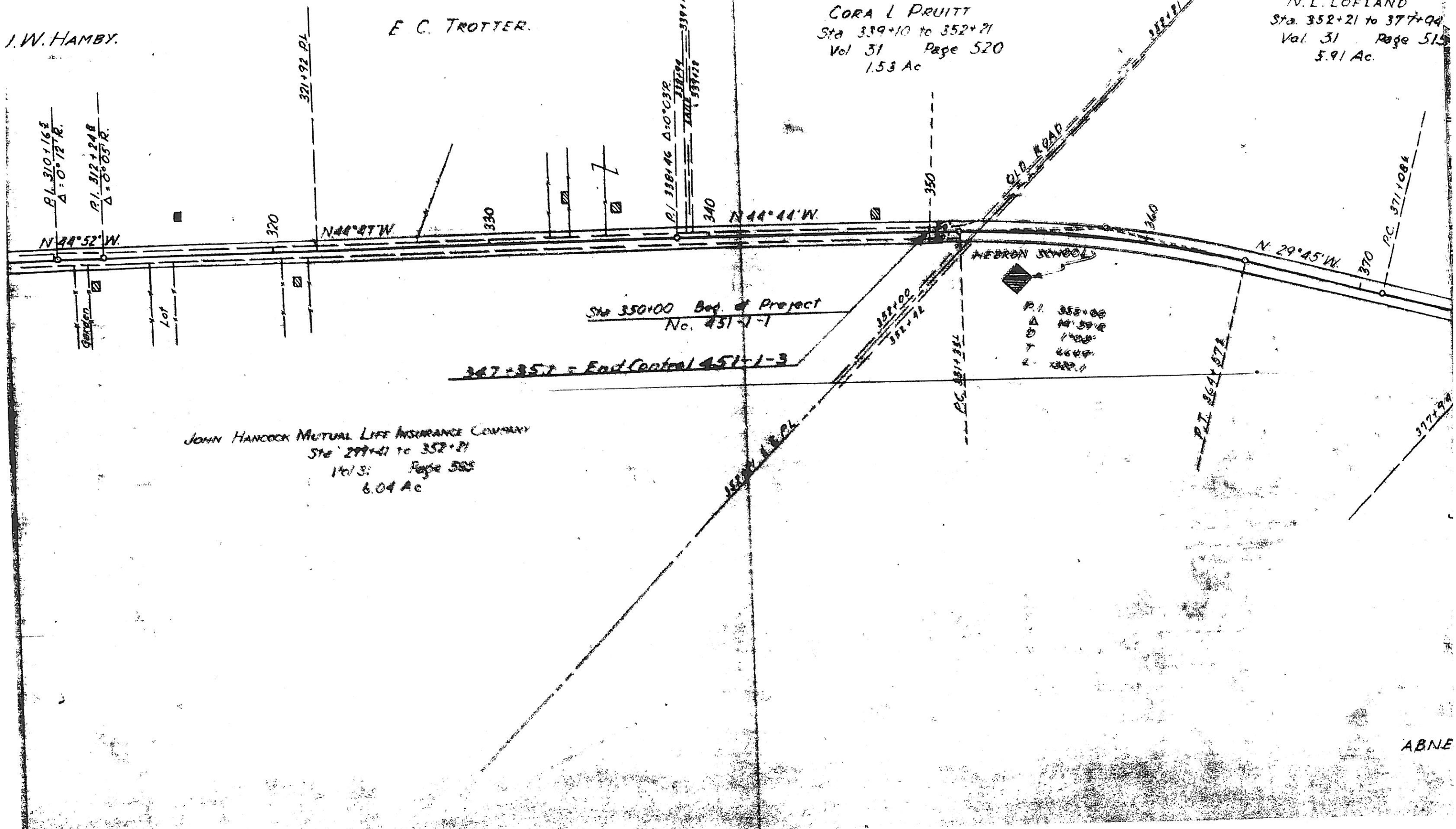
E. C. TROTTER.

CORA L PRUITT
Sta 339+10 to 352+71
Vol 31 Page 520
1.53 Ac

ABNER JOHNSON SU
Abs. No. 123

N. L. LOFLAND
Sta. 352+21 to 377+94
Vol. 31 Page 515
5.91 Ac.

J. W. HAMBY.



P.L. 310+16 1/2
Δ = 0° 12' R.
P.L. 312+24 1/2
Δ = 0° 05' R.
N 44° 52' W.

321+92 P.L.
320
N 44° 44' W

P.L. 338+146 Δ = 0° 03' R.
340
339+10 P.L.
339+10

N 44° 44' W

OLD ROAD

352+21 P.L.

N 29° 45' W

P.C. 371+1084
370

Sta 350+00 Beg. of Project
No. 451-1-1

347+35.7 = End Control 451-1-3

NEBRON SCHOOL

P.I.	352+00
Δ	14° 59' R
Y	1408'
X	664'
Z	1320'

JOHN HANCOCK MUTUAL LIFE INSURANCE COMPANY
Sta 299+41 to 352+21
Vol 31 Page 325
6.04 Ac

352+00 P.L.

P.C. 351+354

P.T. 364+072

377+94

ABNE

JOHN B. JOHNSON SURVEY
Abs. No. 128

P.I. 383+67
Δ 12° 32' L
D 0° 30'
T 1258.4'
L 2506.9'

M. D. BOSTICK
Sta 395+96 to 409+00
Vol. 31 Page 505
1.55 Ac.
Release: Vol. 32-Page 369

WM. H. BARNES SURVEY
Abs. No. 26

A. L. MOODY
Sta 409+00 to 438+72
Vol. 31 Page 517
6.91 Ac.

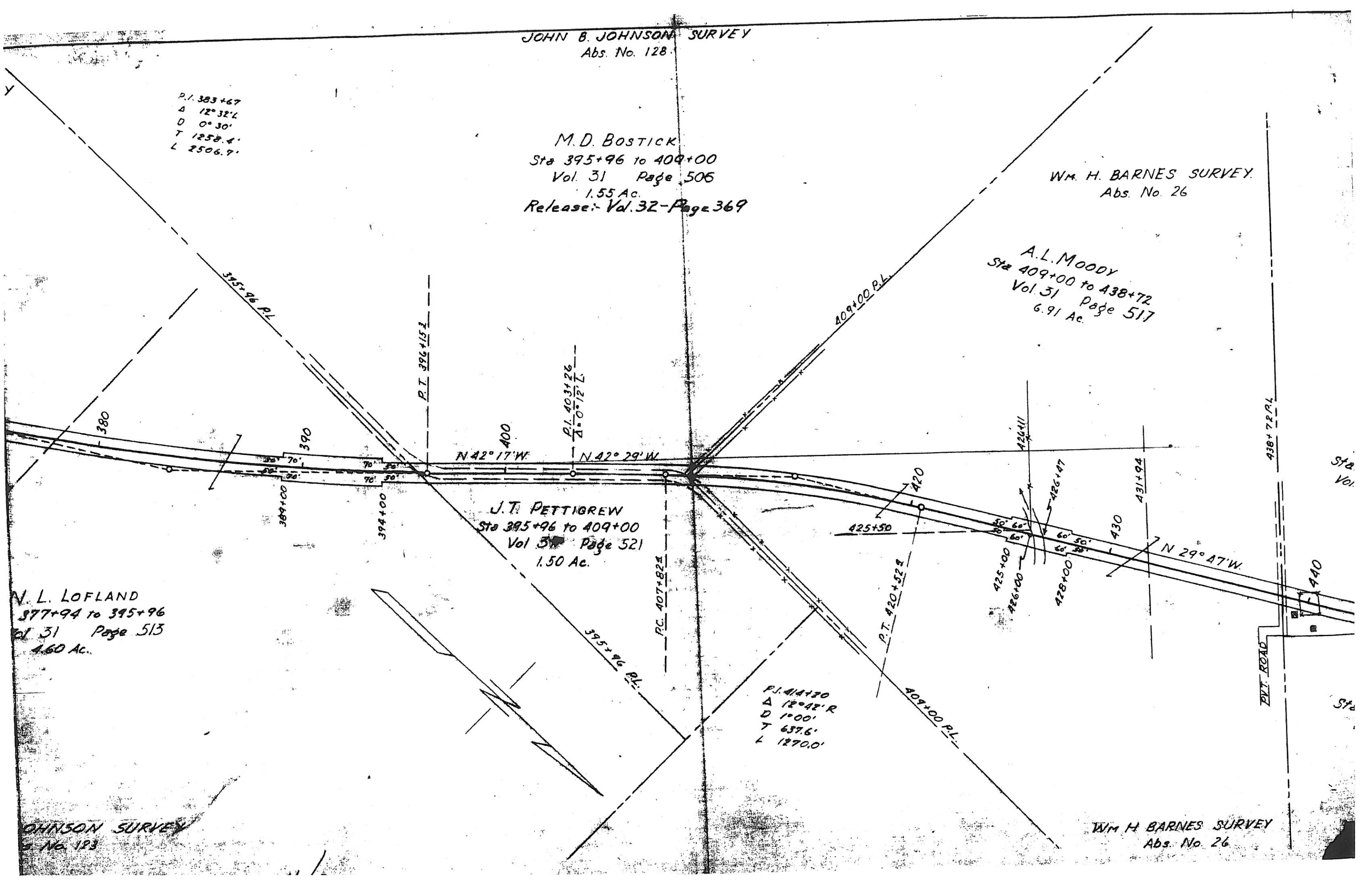
N. L. LOFLAND
Sta 377+94 to 395+96
Vol. 31 Page 513
1.60 Ac.

J. T. PETTIGREW
Sta 395+96 to 409+00
Vol. 31 Page 521
1.50 Ac.

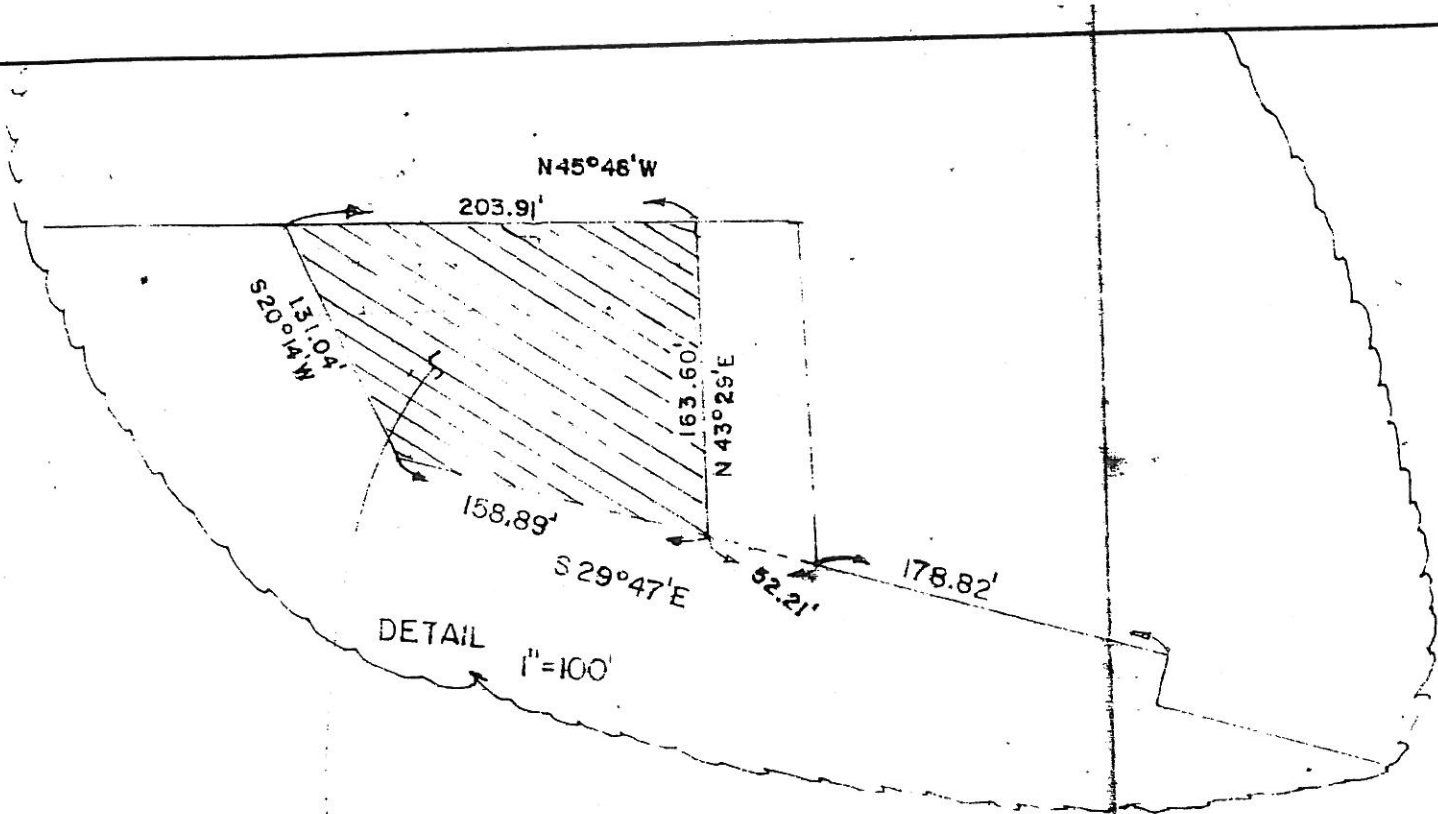
P.I. 414+70
Δ 12° 42' R
D 1° 00'
T 637.6'
L 1270.0'

WM. H. BARNES SURVEY
Abs. No. 26

JOHNSON SURVEY
Abs. No. 128



KANSAS CITY LIFE INS. CO.
 BORROW PIT
 EASEMENT 31-580
 3.69 Acs.



BURNELL J. T. LEWIS
 Abs. No. 255
 No. 43

JOHN D McFARLAND SURVEY
 Abs. No 145

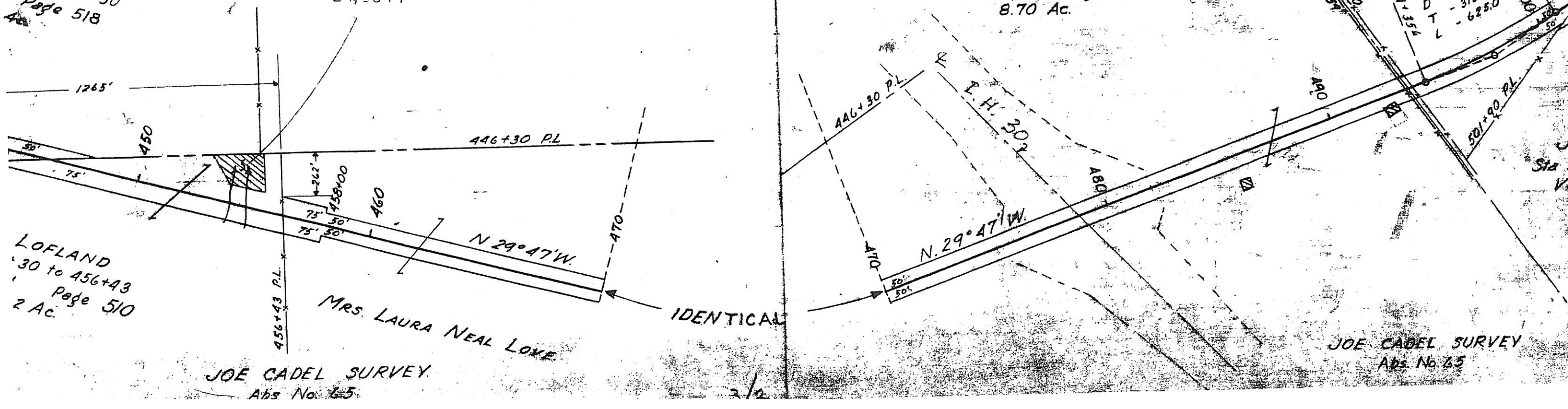
STATE OF TEXAS
 QUITCLAIM
 TO
 HALDEMAN, INC.
 V. 260 P. 816
 24,654±

MOODY
 72 to 446+30
 page 518

MRS. LAURA NEAL LOVE
 Sta 456+43 to 493+54
 Vol. 31 Page 316
 8.70 Ac.

MRS. MILDRED FONDREN
 Sta 493+54 to 501+90
 Vol. 31 Page 519
 2.09 Ac.

PI. 497+492
 Δ D - 12° 30' L
 T - 2° 00' L
 L - 313.8'
 L - 625.0'



LOFLAND
 30 to 456+43
 page 510
 2 Ac.

JOE CADEL SURVEY
 Abs. No. 65

JOE CADEL SURVEY
 Abs. No. 65

KANSAS CITY LIFE INSURANCE Co.
Sta 520+64 to 529+15
Vol. 31 Page 581
4.27 Ac.

A.J. CANUP
533+40 to 535+60
Vol. 31 Page 509
0.05 Ac.

QUITCLAIM DEED
STATE OF TEXAS
TO
OWNER OF FEE
VOL. 143 PG. 414
3.6873 Ac.
C.R.R.M.P. 739 + 4 Poles

J.A. CANUP
529+15 to 535+60
Vol. 31 Page 582
1.48 Ac.

N.L. LOFLAND
Sta. 507+87 to 519+60
Vol. 31 Page 512
4.04 Ac.

Sta. 505+102 - Beg of Project
U.S. W.P. & C.P. No. W.P.G.S. 836

LOFLAND
+90 to 507+87
31 Page 511
06 Ac.

BURNELL J. T. LEWIS SURVEY
Abs. No. 255

IDENTICAL
ROCKWALL CITY LIMITS

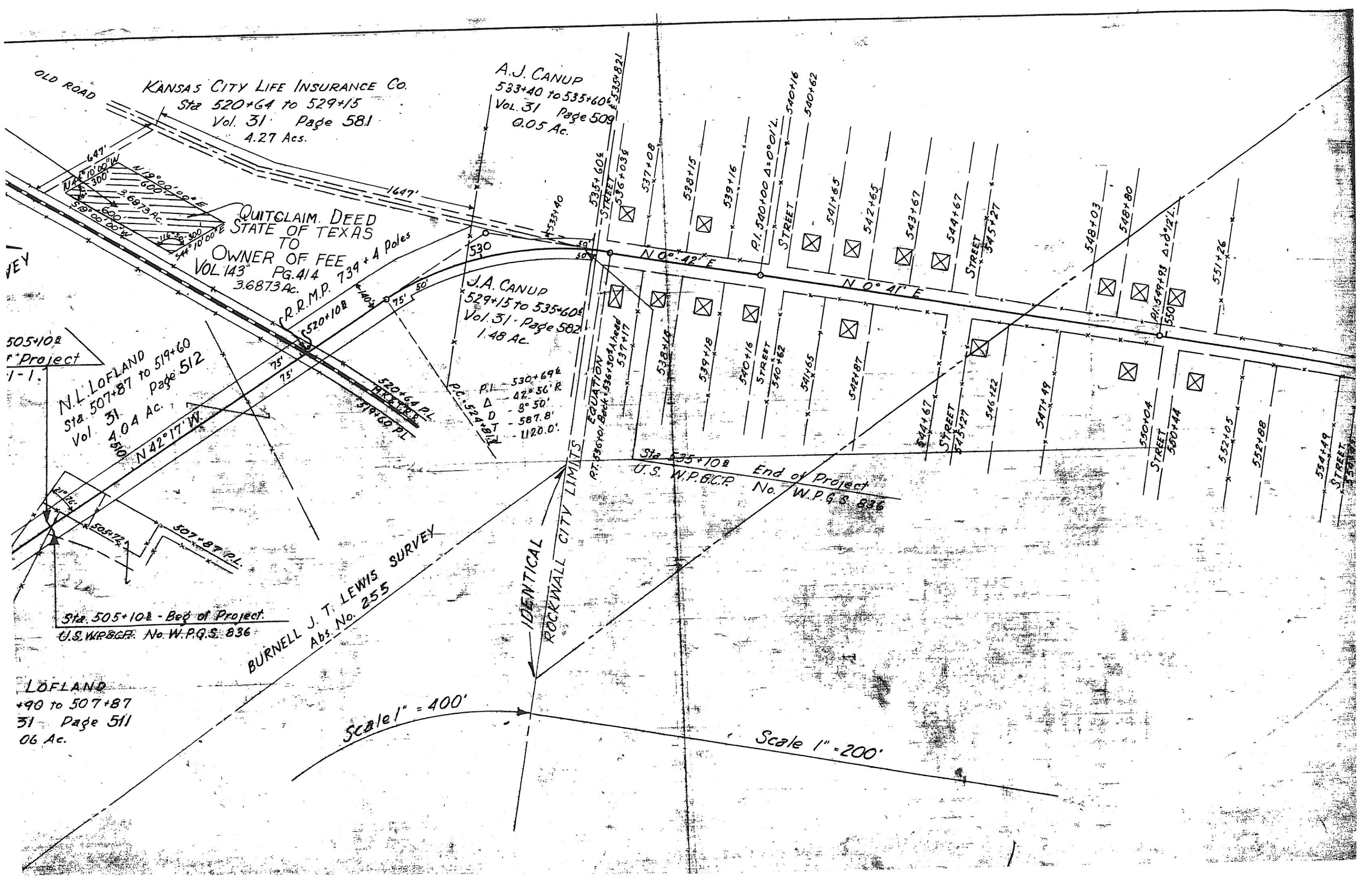
Scale 1" = 400'

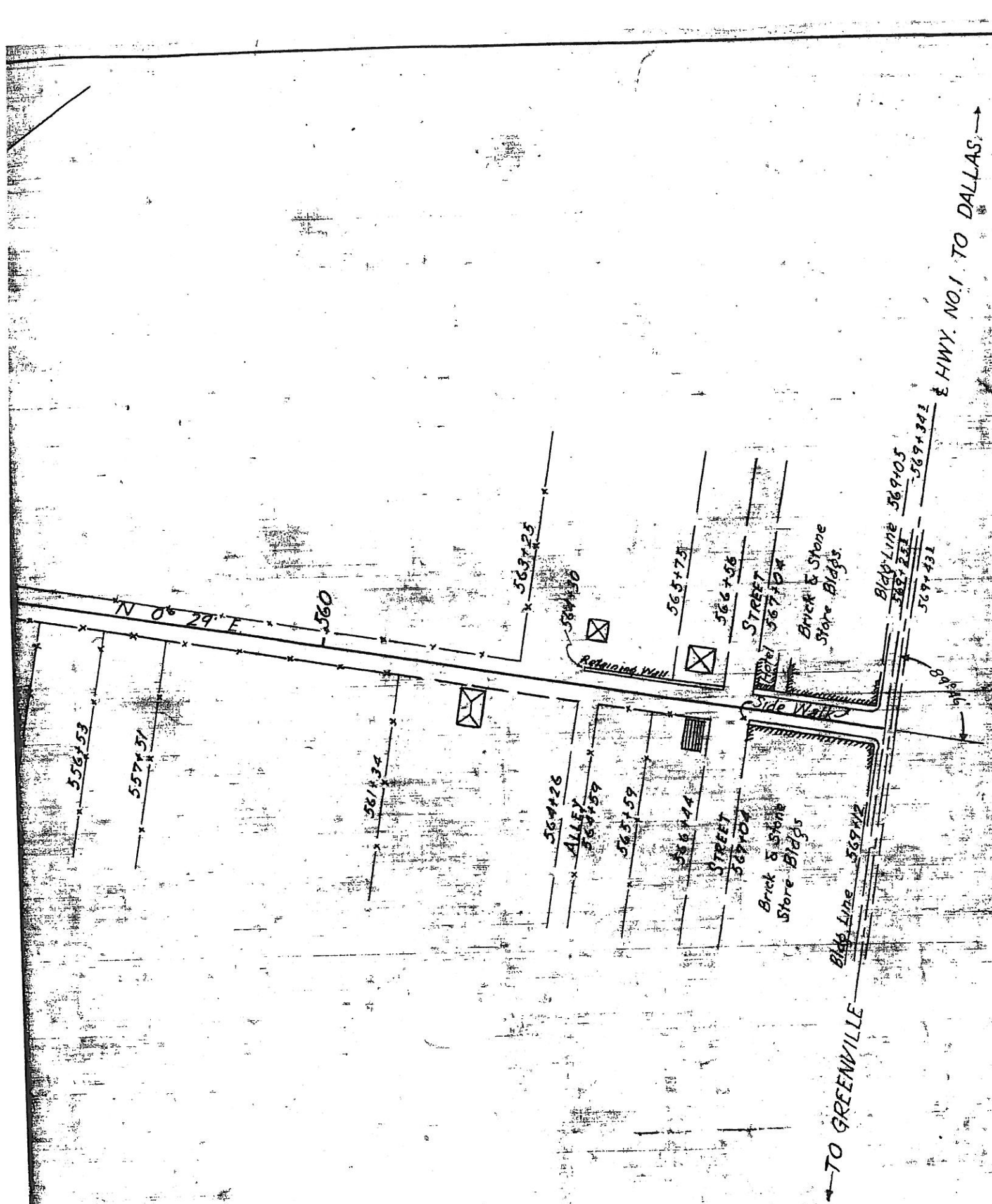
Scale 1" = 200'

Sta 535+102 End of Project
U.S. W.P. & C.P. No. W.P.G.S. 836

EQUATION
P.T. 536+01 Back 536+304 Head 537+17

P.C. 524+181
P.L. 530+694
Δ D 42° 56' R
8° 50'
587.8'
1120.0'





**ROCKWALL COUNTY
RIGHT OF WAY MAP
HIGHWAY NO 205**

FROM APPROX. 3.5 MI. E. OF ROCKWALL TO ROCKWALL
TEXAS HIGHWAY DEPARTMENT
S. J. TREADAWAY RESIDENT ENGR.
TERRELL, TEX.

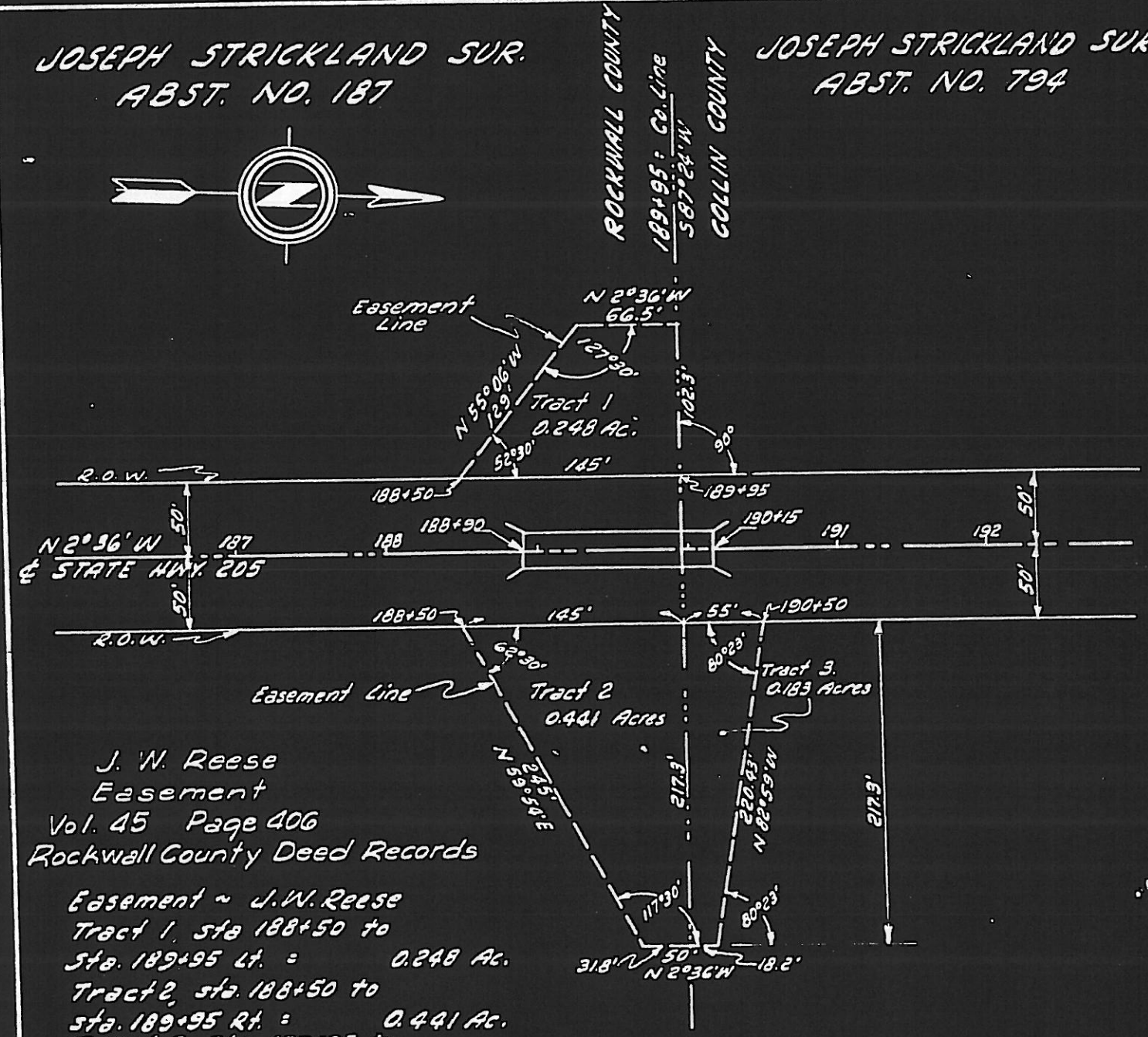
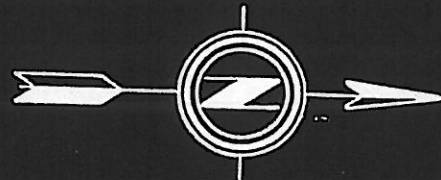
SCALE AS SHOWN
Control 451-1-1

DECEMBER-1935.
W.P.G.S. 836
Control 451-1-2

Rev. June 20, 1936
Revised January 1936

JOSEPH STRICKLAND SUR.
ABST. NO. 187

JOSEPH STRICKLAND SUR.
ABST. NO. 794



J. W. Reese
Easement
Vol. 45 Page 406
Rockwall County Deed Records

Easement ~ J.W. Reese
Tract 1, sta. 188+50 to
sta. 189+95 Lt. = 0.248 Ac.
Tract 2, sta. 188+50 to
sta. 189+95 Rt. = 0.441 Ac.
Tract 3, sta. 189+95 to
sta. 190+50 Rt. = 0.183 Ac.
Total = 0.872 Acres

TEXAS HIGHWAY DEPT.
STATE HWY. 205
CONTROL 451-344
COLLIN & ROCKWALL COUNTIES
SKETCH SHOWING EASEMENT
REQUIRED ACROSS J.W.
REESE PROPERTY AT CAMP
CREEK RELIEF BRIDGE
Prepared in office of Res. Engr.
Rockwall, Texas, July 1949; Scale 1"=100'