

STATE OF TEXAS STATE HIGHWAY DEPARTMENT

7

PLANS OF PROPOSED RIGHT OF WAY PROJECT

F.M. HIGHWAY 740

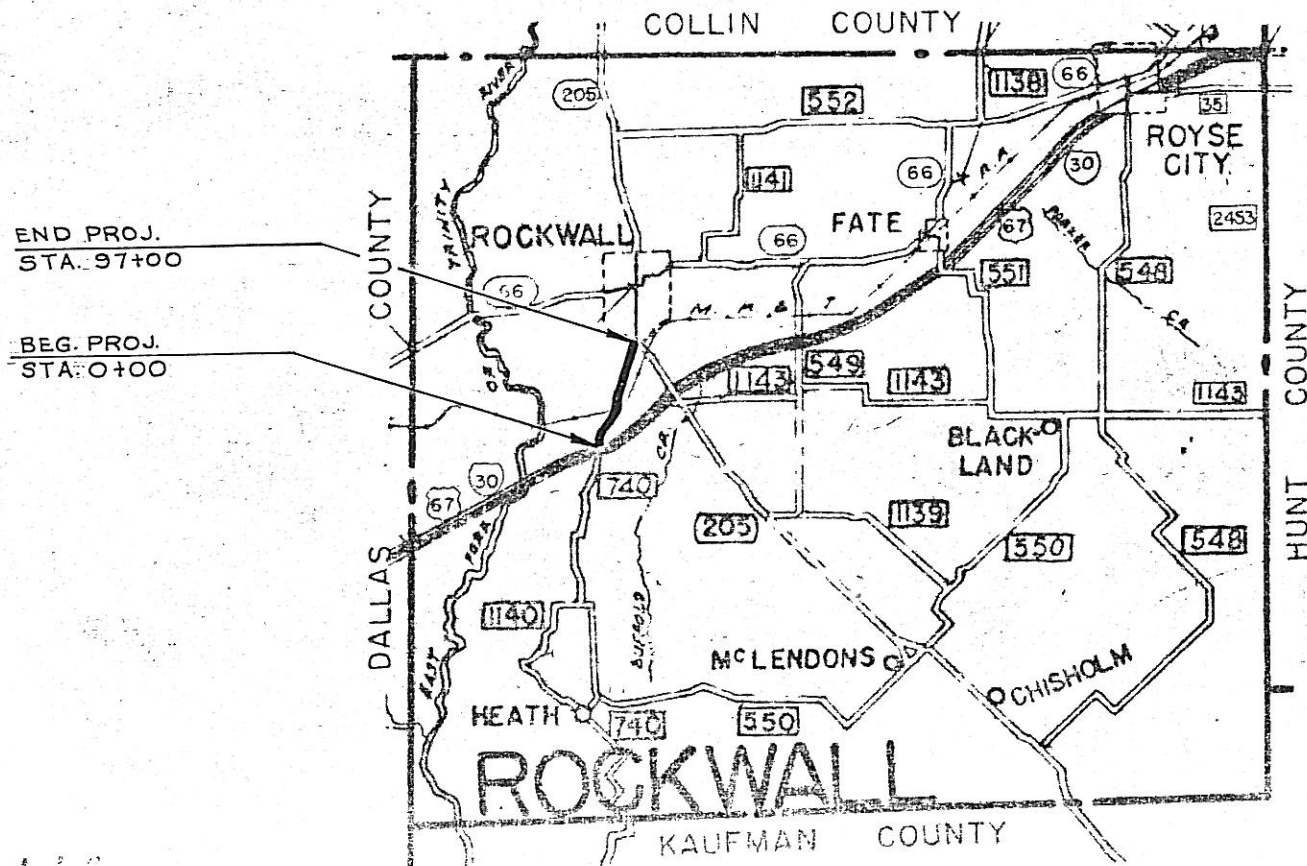
PROJECT NO.

ROCKWALL COUNTY

FROM I.H.30 TO S.H. 205

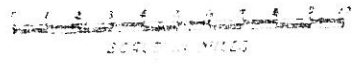
LENGTH 9700 FT. = 1.837 MI.

SCALE 1" = 100'



CONVENTIONAL SYMBOLS

PROPERTY LINE	---
RIGHT OF WAY LINE	---
RIGHT OF WAY MARKERS	---
...	---



STATE HIGHWAY DEPARTMENT

CONNECTED 9-18-1964

APPROVED [Signature]

DESIGNING ENGINEER [Signature]

9-18-1964

B. L. ReBerry

DEPARTMENT OF COMMERCE
BUREAU OF PUBLIC ROADS

APPROVED [Signature]

DATE []

P.I. = Sta. 3708.05
Δ = 19°24' Rt.
D = 5°00'
T = 195.88'
L = 388.00'

P.I. = 1147.41
Δ = 13°18' Rt.
D = 2°00'
T = 334.00
L = 665.00

Curve Data Existing Pymt.
Δ = 13°18' Rt.
D = 2°00'
T = 111.33'
L = 954.93'

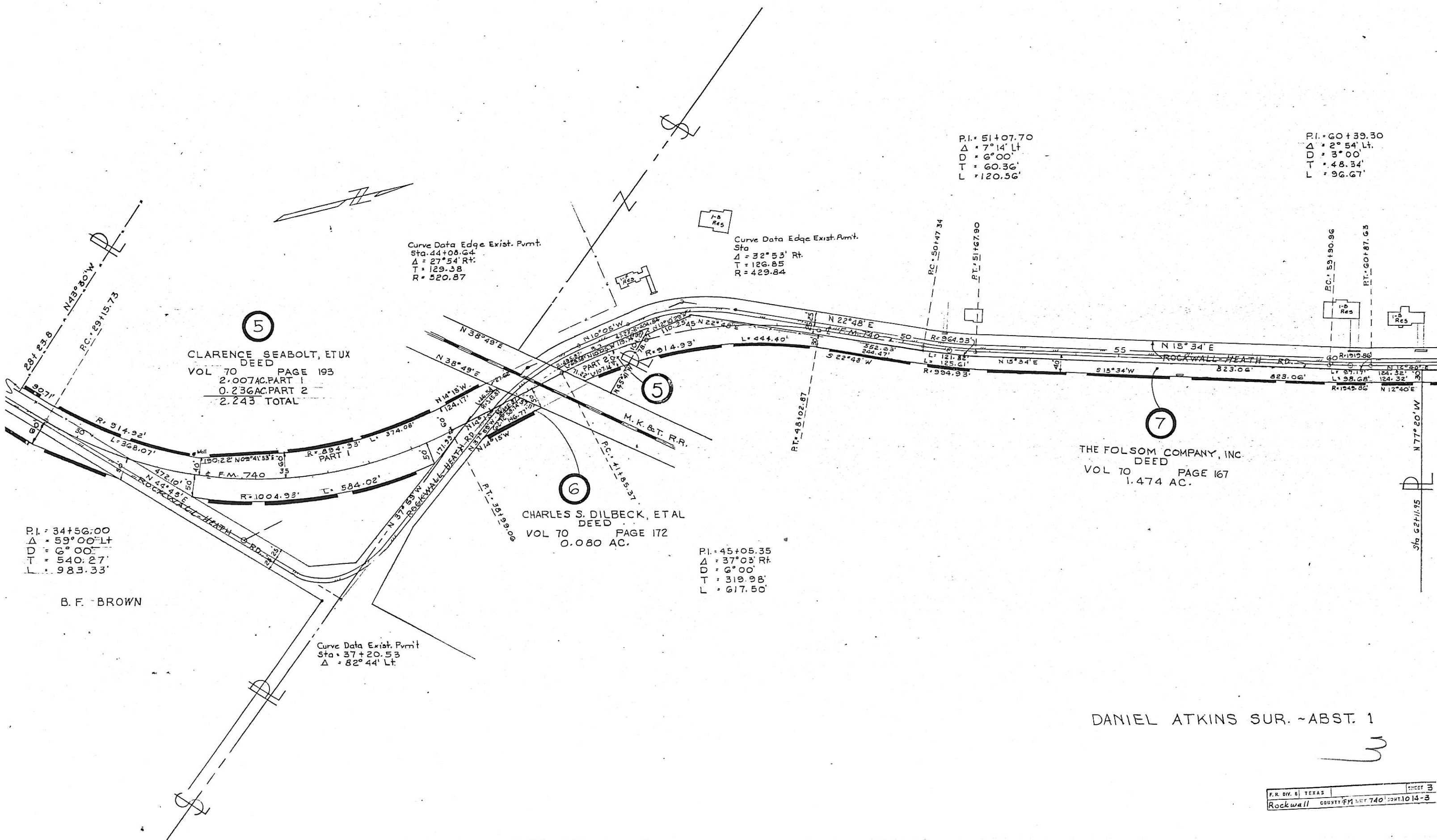
JAMES W. REESE, JR.
DEED
VOL. 70 PAGE 164
0.229 AC.

J. W. CROUCH, JR.
DEED
VOL. 70 PAGE 174
0.303 AC.

G. B. MANN et ux ELIZABETH GAINES MANN
DEED
VOL. 70 PAGE 233
2.521 AC. Total
1.708 AC. In Road
0.813 AC. Net

BEN F. BROWN et al
DEED
VOL. 70 PAGE 480
0.785 AC.
EUGENE C. BROWN
DEED
VOL. 70 PAGE 483

2



5
 CLARENCE SEABOLT, ETUX
 DEED
 VOL 70 PAGE 193
 2.007 AC. PART 1
 0.236 AC. PART 2
 2.243 TOTAL

6
 CHARLES S. DILBECK, ETAL
 DEED
 VOL 70 PAGE 172
 0.080 AC.

7
 THE FOLSOM COMPANY, INC.
 DEED
 VOL 70 PAGE 167
 1.474 AC.

P.I. = 34+56.00
 $\Delta = 59^{\circ}00' Lt$
 $D = 6^{\circ}00'$
 $T = 540.27'$
 $L = 983.33'$

B. F. BROWN

Curve Data Exist. Pmnt
 Sta. 37+20.53
 $\Delta = 82^{\circ}44' Lt$

Curve Data Edge Exist. Pmnt
 Sta. 44+08.64
 $\Delta = 27^{\circ}54' Rt$
 $T = 129.38$
 $R = 520.87$

Curve Data Edge Exist. Pmnt
 Sta.
 $\Delta = 32^{\circ}53' Rt$
 $T = 126.85$
 $R = 429.84$

P.I. = 51+07.70
 $\Delta = 7^{\circ}14' Lt$
 $D = 6^{\circ}00'$
 $T = 60.36'$
 $L = 120.56'$

P.I. = 60+39.30
 $\Delta = 2^{\circ}54' Lt$
 $D = 3^{\circ}00'$
 $T = 48.34'$
 $L = 96.67'$

P.I. = 45+05.35
 $\Delta = 37^{\circ}03' Rt$
 $D = 6^{\circ}00'$
 $T = 319.98'$
 $L = 617.50'$

DANIEL ATKINS SUR. - ABST. 1

3

P.I. = 60 + 39.30
Δ = 2° 54' Lt.
D = 3° 00'
T = 48.34'
L = 96.67'

P.I. = 80 + 93.12
Δ = 6° 25' Lt.
D = 3° 00'
T = 107.05'
L = 213.89'

