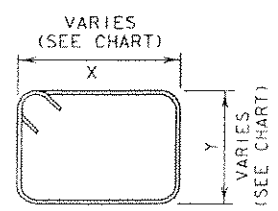


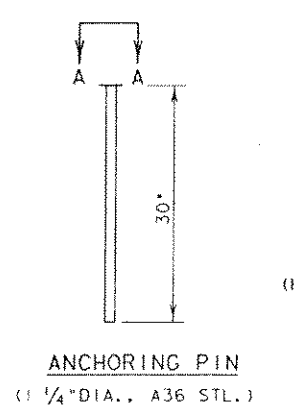
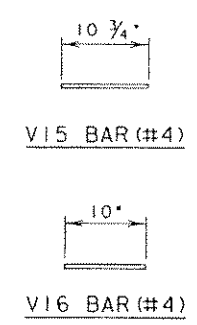
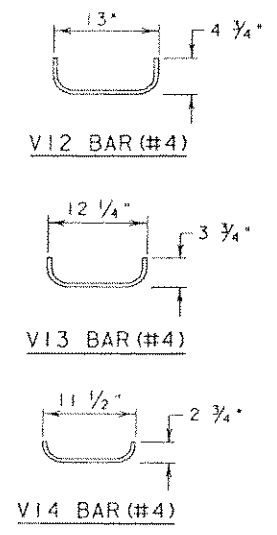
- GENERAL NOTES**
- TYPE 2 BARRIER SHALL BE USED AS AN END TREATMENT FOR TYPE 1 BARRIER WHEN APPROPRIATE.
 - THE ANCHORAGE PINS ARE ALL THE SAME LENGTH AND ARE INTENDED TO BE DRIVEN FLUSH WITH THE TOP OF THE BARRIER SURFACE.
 - THE BENDS IN THE H3 AND H1 BARS ARE SLIGHT, NO FORMAL BEND IS NECESSARY.
 - TYPE 2 BARRIER MUST BE LIFTED FROM REAR FIRST TO PREVENT CRACKING OF SLOPED SECTION.
 - SEE SHEET 1 OF 2 FOR ADDITIONAL INFORMATION.

NOTE: ANCHORING PIPES NOT SHOWN IN ELEVATION.



V 3-11 BARS (#4)

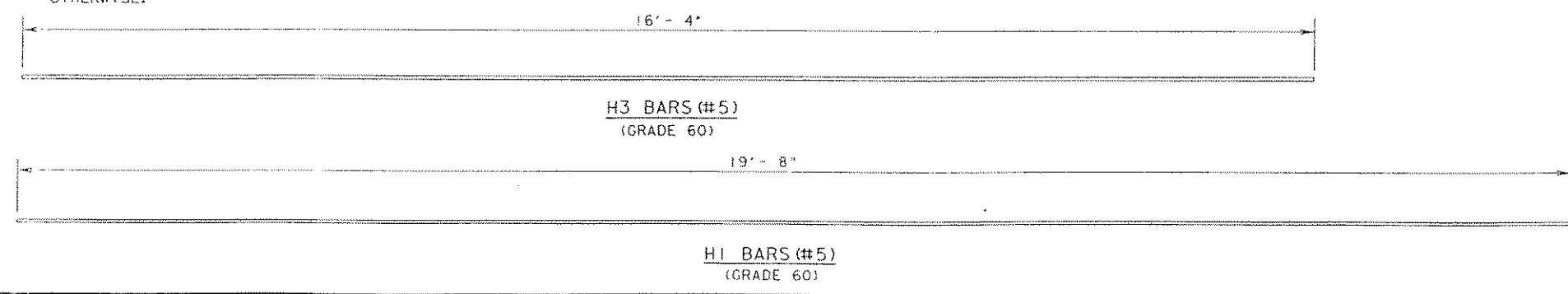
BAR (#4)	X (IN.)	Y (IN.)
V3 BAR	20 1/4	14 1/2
V4 BAR	19 1/2	13 1/2
V5 BAR	18 1/2	12 1/4
V6 BAR	17 1/2	11 1/4
V7 BAR	17	10 1/4
V8 BAR	16 1/4	9
V9 BAR	15 1/2	8
V10 BAR	14 1/2	7
V11 BAR	13 3/4	6



FOR CONTRACTORS INFORMATION ONLY

(TYPE 2)		
APPROX. QUANTITIES 20 FT. SECTION		
CONCRETE	CY	1.65
REINFORCING STEEL	LBS	240
TOTAL BARRIER WT.	LBS	7000

NOTE: ALL BENDING OF SHEAR REBAR IS AT A 2" RADIUS, UNLESS SPECIFIED OTHERWISE.



TEXAS DEPARTMENT OF TRANSPORTATION

LOW PROFILE CONCRETE BARRIER (PORTABLE AND PRECAST)

LPCB(2)-92

SHEET 2 OF 2

MODIFICATIONS	FED. NO. DIV. NO.	STATE	FEDERAL AID PROJECT NO.	SHEET NO.
	6	TEXAS	STP 96(030)MM	83
	STATE DIST. NO.	COUNTY	CONTRACT	SECTION
	18	ROCKWALL	1044	03 04

HIGHWAY DESIGN DIVISION 10-207