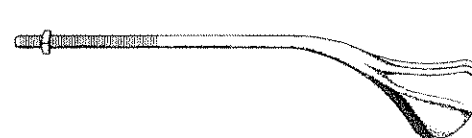
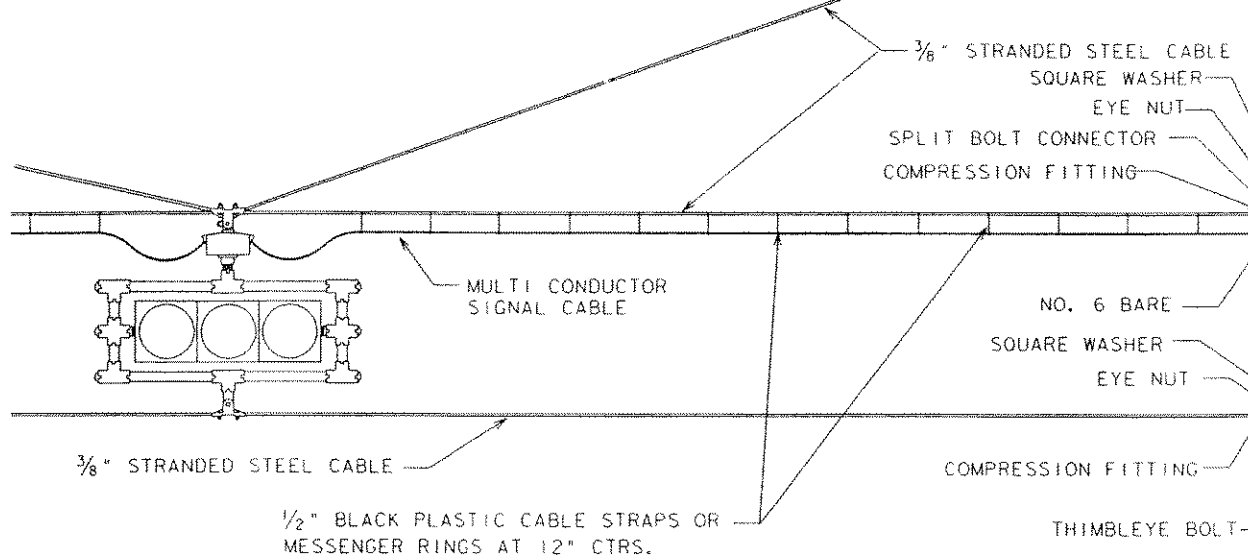


**COMPRESSION FITTING**

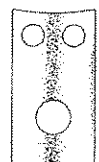
SOURCES:  
RELIABLE ELECTRIC NO. 5264  
FARGO NO. OR EQUAL

**LUMINAIRE ARM**  
SOURCES:  
CROUSE HINDS NO. 106-R82  
JOSLYN NO. J75100B OR EQUAL



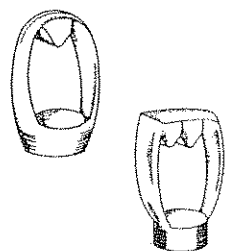
**THIMBLEYE BOLT (Angle Type)**

SOURCES:  
JOSLYN NO. J80 SERIES  
MCGRAW EDISON DG4F OR EQUAL



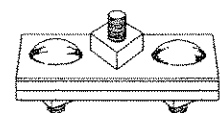
**LIFT PLATE**

SOURCES:  
JOSLYN J7886  
MCGRAW EDISON DG4M-2 OR EQUAL



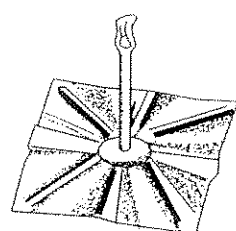
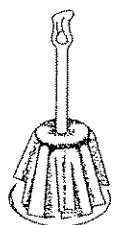
**EYE NUTS (Twineye & tripeye)**

SOURCES:  
JOSLYN NO. J12593  
MCGRAW EDISON DG1SE OR EQUAL



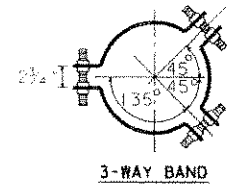
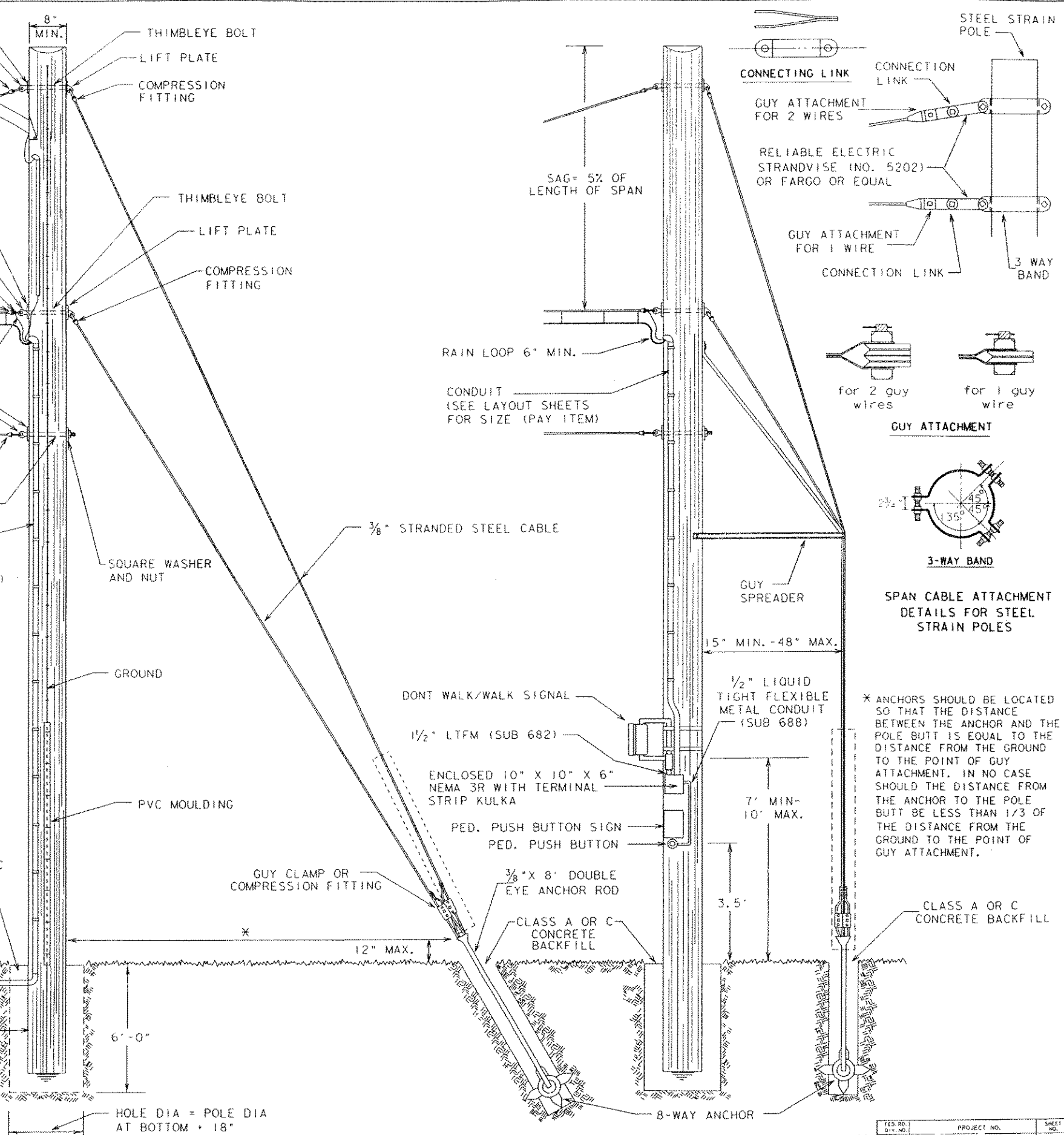
**GUY CLAMP (3-Bolt)**

6" HEAVY GUY CLAMP WITH 3-5/8" BOLTS OR RELIABLE ELECTRIC STRANDVISE WITH FLEXIBLE BAIL (NO. 5264) OR FARGO STRANDVISE OR EQUAL



**8-WAY ANCHOR**

SOURCES:  
8-WAY ANCHOR - JOSLYN NO. J8200-11T) OR  
6-WAY ANCHOR - MCGRAW EDISON DA6E1 OR EQUAL



**SPAN CABLE ATTACHMENT DETAILS FOR STEEL STRAIN POLES**

\* ANCHORS SHOULD BE LOCATED SO THAT THE DISTANCE BETWEEN THE ANCHOR AND THE POLE BUTT IS EQUAL TO THE DISTANCE FROM THE GROUND TO THE POINT OF GUY ATTACHMENT. IN NO CASE SHOULD THE DISTANCE FROM THE ANCHOR TO THE POLE BUTT BE LESS THAN 1/3 OF THE DISTANCE FROM THE GROUND TO THE POINT OF GUY ATTACHMENT.

**CONSTRUCTION DETAILS FOR SPAN WIRE MOUNTED SIGNALS**

FED. NO. 6	PROJECT NO. STP 96 (830)MM	SHEET NO. 61
STATE TEXAS	COUNTY ROCKWALL	
CONTRACT NO. 1014	SECTION 03	JOB NO. 041
		HIGHWAY NO. FM 740