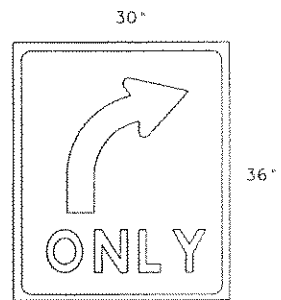
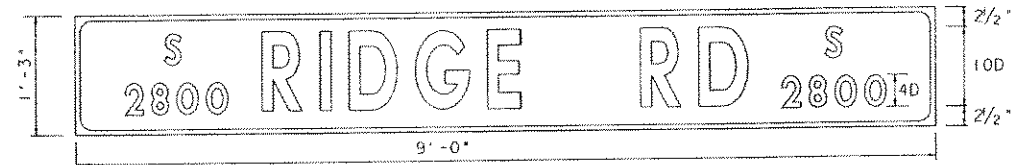


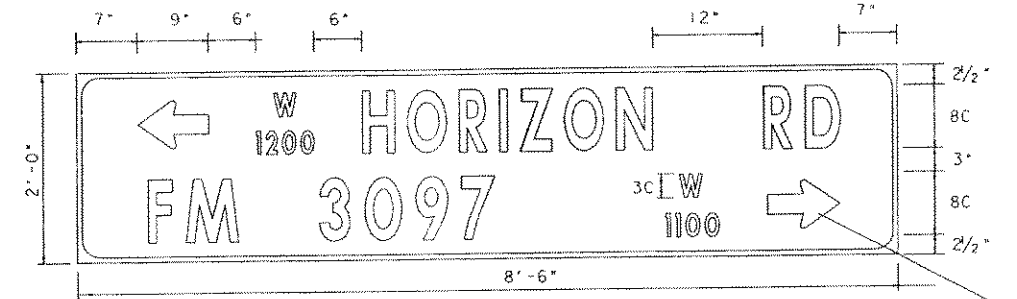
R10-12
SIGN #1, 2, 3, 4



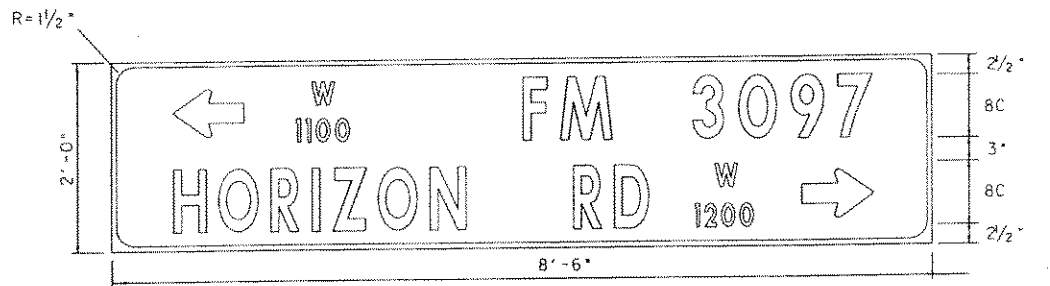
R3-5R
SIGN #5



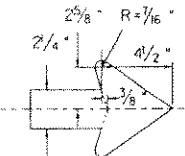
SIGN #6.8



SIGN #9



SIGN #7



LEGEND

- LETTERS- WHITE
- BORDER- WHITE
- BACKGROUND- GREEN REFLECTIVE

GENERAL NOTES:

ALPHABETS AND LATERAL SPACING BETWEEN LETTERS AND NUMERALS SHALL CONFORM WITH THE FEDERAL HIGHWAY ADMINISTRATION'S "MANUAL ON UNIFORM TRAFFIC CONTROL DEVICES FOR STREETS AND HIGHWAYS" LATEST EDITION AND ANY APPROVED CHANGES THERETO. LATERAL SPACING OF TEXT SHALL BE SUCH AS TO PROVIDE A BALANCED APPEARANCE. SIGN BACKGROUNDS SHALL BE OF FLAT SURFACE REFLECTIVE SHEETING CONFORMING WITH THE SPECIFICATIONS (TYPE C). THE SIGN BLANKS SHALL BE ONE PIECE SHEET ALUMINUM ALLOY 0.080 INCHES THICK CONFORMING WITH THE ITEM "ALUMINUM SIGNS (TYPE A)".



The seal appearing on this document was authorized by Gordon L. Alderman, P.E. 70286, on 4-30, 1996.

SIGN DETAILS
FM 740 AND FM 3097

FED. RD. DIV. NO.	FEDERAL AID PROJECT NO.	SHEET NO.
6	STP 9618301MM	52
STATE	STATE DIST. NAME	COUNTY
TEXAS	DALLAS	ROCKWALL
CONTROL	SECTION	JOB HIGHWAY NO.
1014	03	041 FM 740