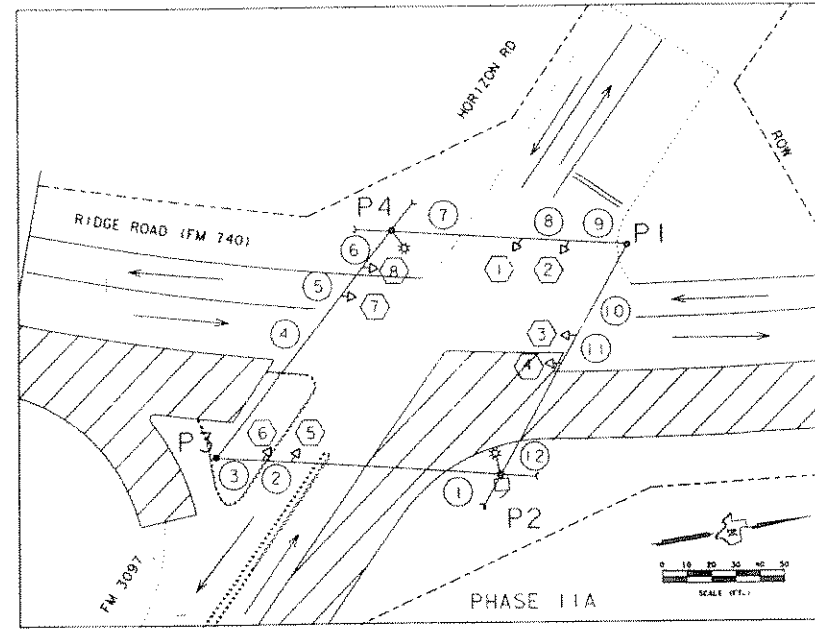


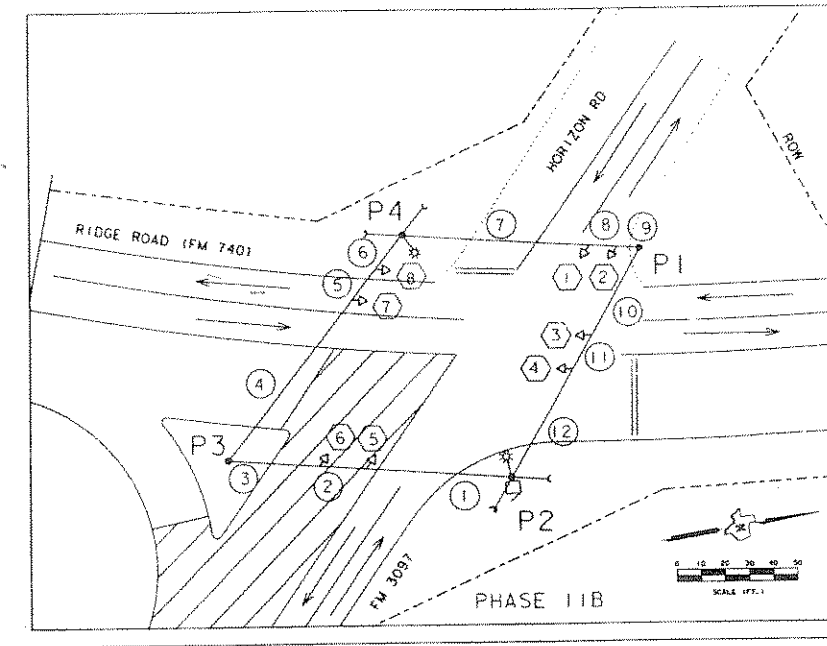
RUN AND LENGTH

①	②	③	④	⑤	⑥	⑦	⑧	⑨	⑩	⑪	⑫
61'	20'	38'	70'	16'	34'	55'	20'	24'	60'	16'	34'
119'			120'			99'			110'		



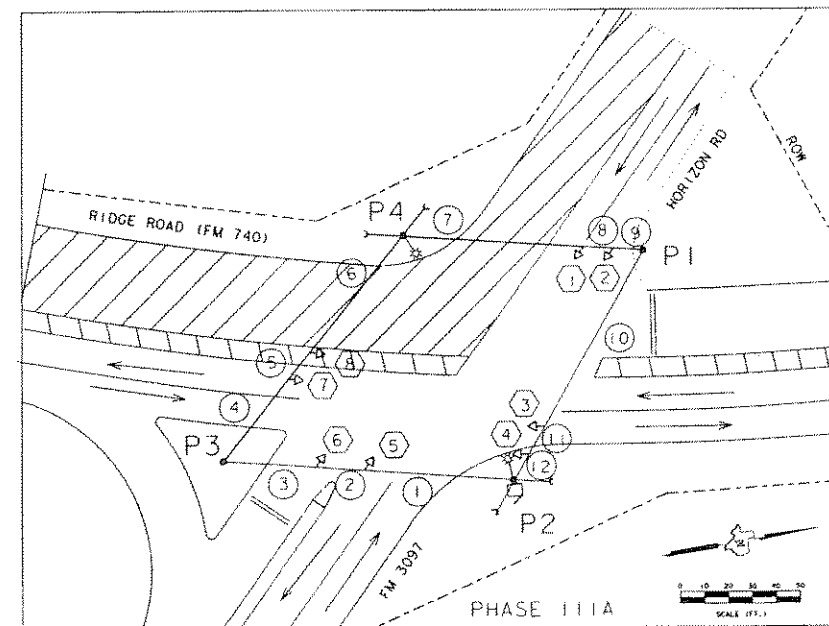
RUN AND LENGTH

①	②	③	④	⑤	⑥	⑦	⑧	⑨	⑩	⑪	⑫
88'	12'	19'	86'	16'	18'	55'	20'	24'	43'	14'	53'
119'			120'			99'			110'		



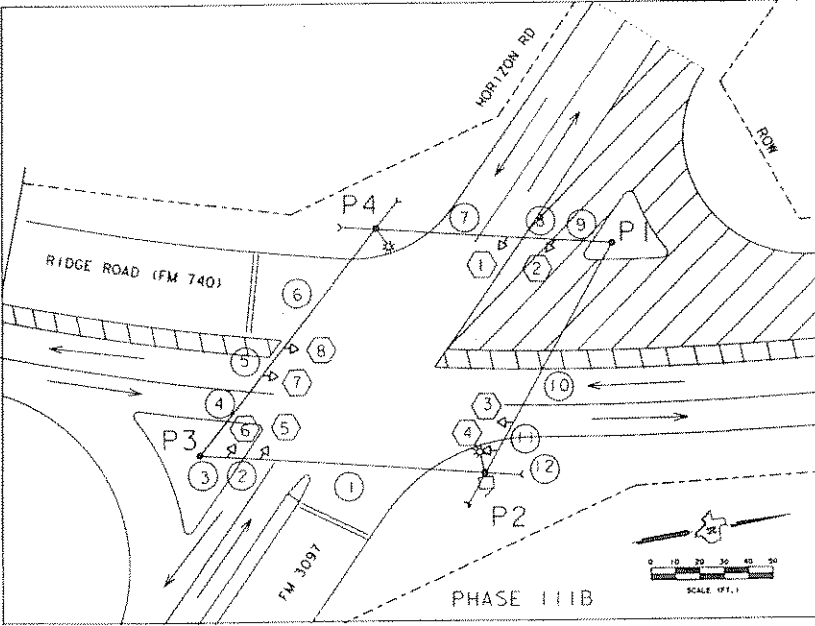
RUN AND LENGTH

①	②	③	④	⑤	⑥	⑦	⑧	⑨	⑩	⑪	⑫
61'	20'	38'	86'	16'	18'	55'	20'	24'	43'	14'	53'
119'			120'			99'			110'		



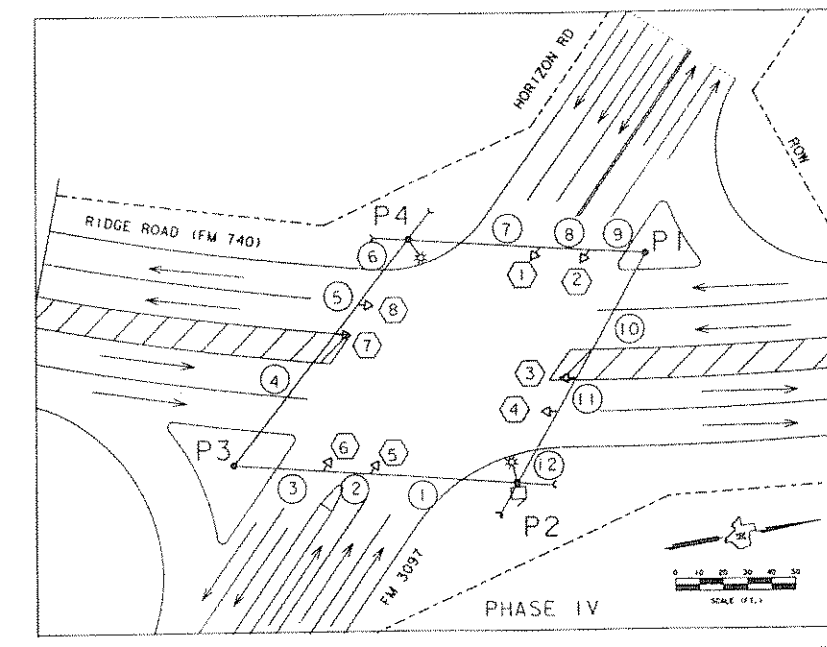
RUN AND LENGTH

①	②	③	④	⑤	⑥	⑦	⑧	⑨	⑩	⑪	⑫
61'	20'	38'	43'	14'	63'	74'	12'	13'	84'	13'	13'
119'			120'			99'			110'		



RUN AND LENGTH

①	②	③	④	⑤	⑥	⑦	⑧	⑨	⑩	⑪	⑫
93'	14'	12'	43'	14'	63'	55'	20'	24'	84'	13'	13'
119'			120'			99'			110'		



RUN AND LENGTH

①	②	③	④	⑤	⑥	⑦	⑧	⑨	⑩	⑪	⑫
61'	20'	38'	70'	16'	34'	55'	20'	24'	60'	16'	34'
119'			120'			99'			110'		



The seal appearing on this document was authorized by Gordon L. Alderman, P.E. 70286, on 6-12, 1996
Gordon L. Alderman

CONSTRUCTION PHASING SIGNAL HEAD PLACEMENT

FED. RD. DIV. NO.	FEDERAL AID PROJECT NO.	SHEET NO.
6	STP 96(830)MM	49
STATE	COUNTY	
TEXAS	ROCKWALL	
CONTROL SECTION	JOB	HIGHWAY NO.
1014	03	041 FM 740