

CONDUIT

CONDUIT TYPE	TOTAL LENGTH
1/2" RM	14'
2" PVC	33'
2" RM	4'
3" RM	22'

LUMINAIRE

POLE	TYPE	LUMINAIRE
P1	STRAIN	
P2	WOOD	1
P3	STRAIN	
P4	WOOD	1
TOTAL		2

CONDUIT RUNS

RUN NUMBER	CONDUIT TYPE	NO. 6 BARE	NO. 6 XHHW	NO. 8 XHHW	NO. 12 XHHW	7 CNDR CABLE	DET. CABLE	LENGTH OF RUN
1	OH					2		61'
2	OH					2		20'
3	OH					1		38'
4	OH					1		70'
5	OH					1		16'
6	OH					1		34'
7	OH		3					55'
8	OH		3			1		20'
9	OH		3			1		24'
10	OH		3			1		60'
11	OH		3			2		16'
12	OH		3			2		34'
13	2" RM	1	2	6				4'
14*	3" RM			6		4		22'
15	2" PVC	1	2	6				33'
16	1/2" RM	1		3				7'
17	1/2" RM	1		3				7'

* CONDUIT TO BE ATTACHED TO THE BOTTOM OF THE CONTROLLER CABINET

CABLE TERMINATION CHART

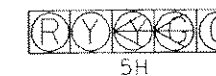
CNDR. COLOR	CABLE 1 FROM SPAN P1-P2 TO CNTRL. 7 CNDR.	CABLE 2 FROM SPAN P2-P3 TO CNTRL. 7 CNDR.	CABLE 3 FROM SPAN P3-P4 TO CNTRL. 7 CNDR.	CABLE 4 FROM SPAN P4-P1 TO CNTRL. 7 CNDR.
BLACK	SH 3 → Y	SH 5 → Y	SH 7 → Y	SH 1 → Y
WHITE	SIGNAL COMMON	SIGNAL COMMON	SIGNAL COMMON	SIGNAL COMMON
RED	SH 3, 4 R	SH 5, 6 R	SH 7, 8 R	SH 1, 2 R
GREEN	SH 3, 4 G	SH 5, 6 G	SH 7, 8 G	SH 1, 2 G
ORANGE	SH 3, 4 Y	SH 5, 6 Y	SH 7, 8 Y	SH 1, 2 Y
BLUE	SH 3 → G	SH 5 → G	SH 7 → G	SH 1 → G
WHITE/BLACK	SPARE	SPARE	SPARE	SPARE

CNDR/CABLE SUMMARY

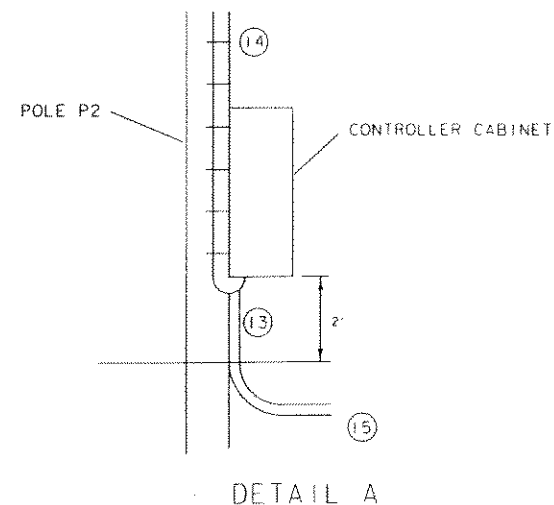
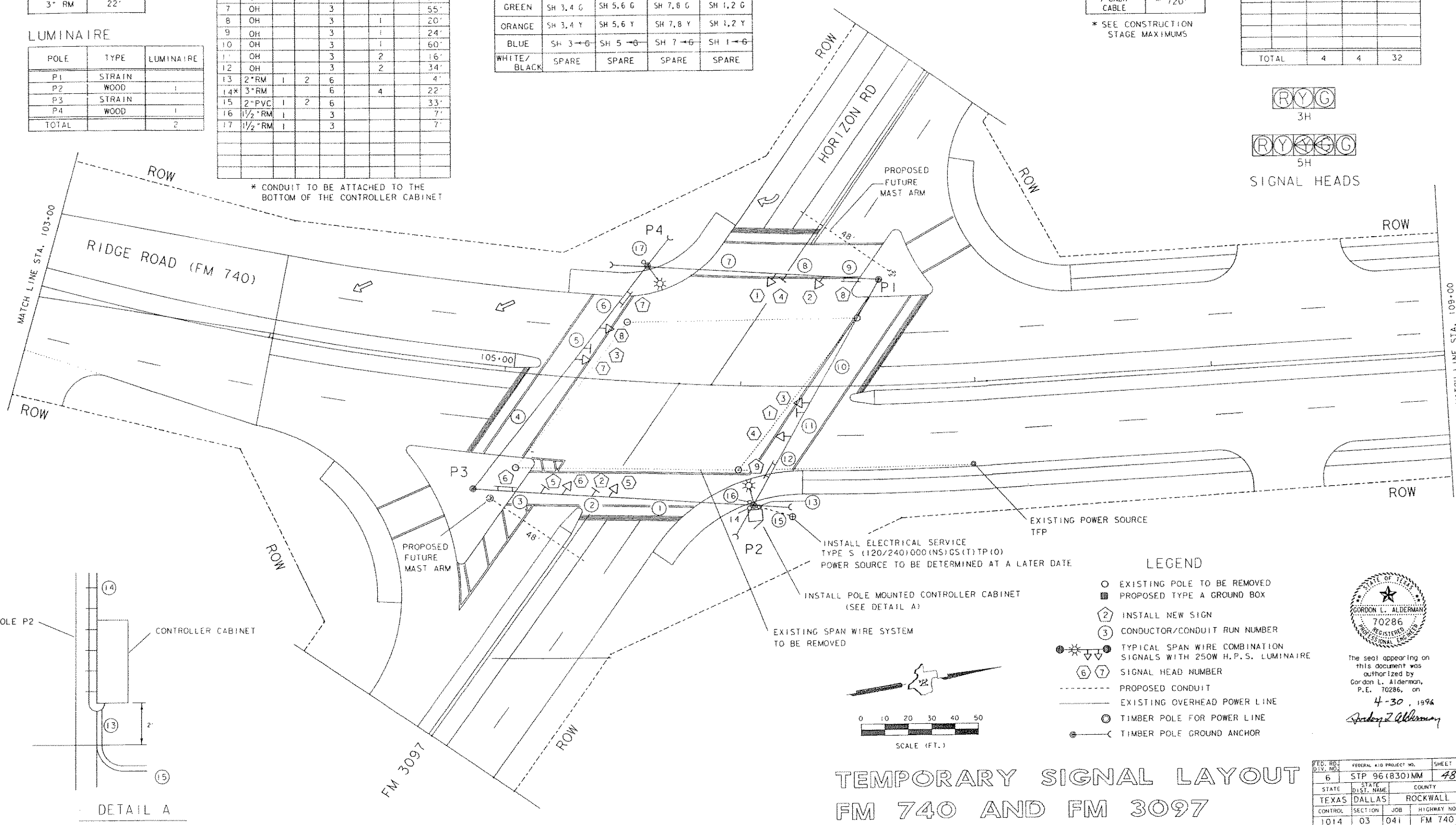
CONDUCTOR TYPE	TOTAL LENGTH (LF)
NO. 6 XHHW	74'
NO. 6 BARE	37'
NO. 8 XHHW	1023'
7 CNDR CABLE	* 720'

* SEE CONSTRUCTION STAGE MAXIMUMS

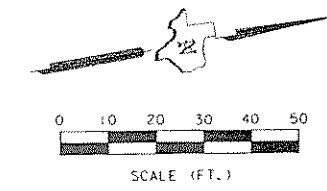
HEAD NO.	TYRE	BACK PLATE		12" VEH SECTION
		3 SEC	5 SEC	
1	5H		1	5
2	3H	1		3
3	5H		1	5
4	3H	1		3
5	5H		1	5
6	3H	1		3
7	5H		1	5
8	3H	1		3
TOTAL		4	4	32



SIGNAL HEADS



- LEGEND
- EXISTING POLE TO BE REMOVED
 - PROPOSED TYPE A GROUND BOX
 - ② INSTALL NEW SIGN
 - ③ CONDUCTOR/CONDUIT RUN NUMBER
 - ⊙ TYPICAL SPAN WIRE COMBINATION SIGNALS WITH 250W H.P.S. LUMINAIRE
 - ⑥ ⑦ SIGNAL HEAD NUMBER
 - PROPOSED CONDUIT
 - EXISTING OVERHEAD POWER LINE
 - ⊙ TIMBER POLE FOR POWER LINE
 - ⊙ TIMBER POLE GROUND ANCHOR



STATE OF TEXAS
 GORDON L. ALDERMAN
 70286
 REGISTERED PROFESSIONAL ENGINEER
 The seal appearing on this document was authorized by Gordon L. Alderman, P.E. 70286, on 4-30, 1996
Gordon L. Alderman

TEMPORARY SIGNAL LAYOUT
 FM 740 AND FM 3097

FED. RD. DIST. NO.	FEDERAL AID PROJECT NO.	SHEET NO.
6	STP 96(830)NM	48
STATE	DIST. NAME	COUNTY
TEXAS	DALLAS	ROCKWALL
CONTROL SECTION	JOB	HIGHWAY NO.
1014	03 041	FM 740