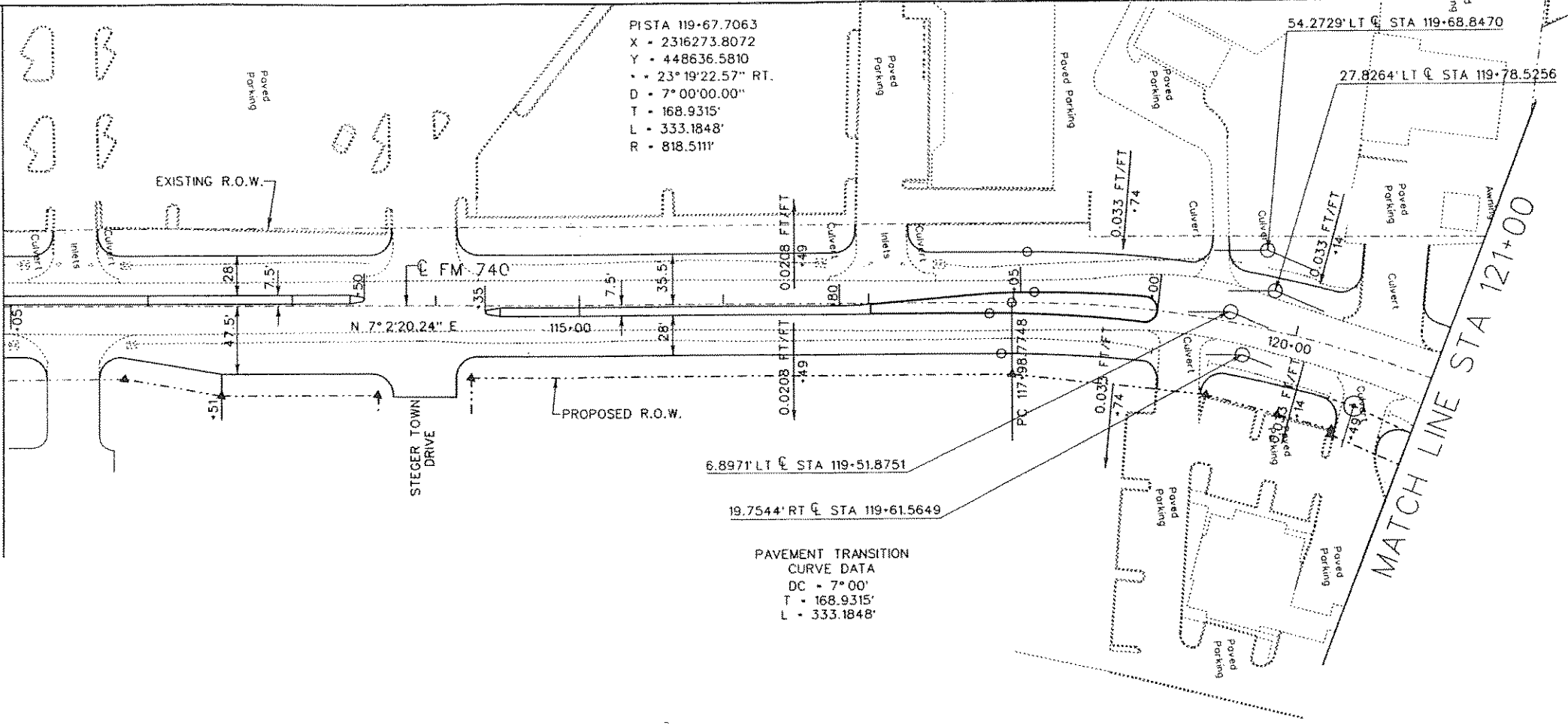




MATCH LINE STA 111+00

MATCH LINE STA 121+00

PISTA 119-67.7063
 X = 2316273.8072
 Y = 448636.5810
 • • 23° 19' 22.57" RT.
 D = 7° 00' 00.00"
 T = 168.9315'
 L = 333.1848'
 R = 818.5111'



6.8971' LT @ STA 119-51.8751
 19.7544' RT @ STA 119-61.5649

PAVEMENT TRANSITION
 CURVE DATA
 DC = 7° 00'
 T = 168.9315'
 L = 333.1848'

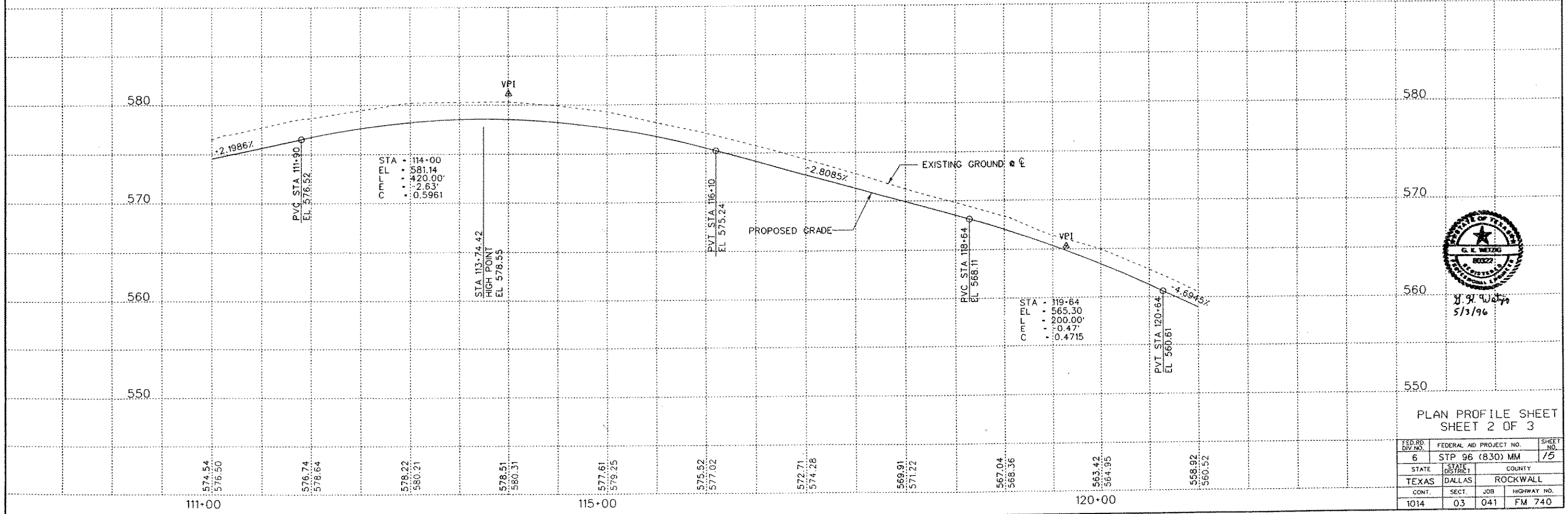
BENCH MARK
 "D" CUT S. DRIVEWAY HDWL,
 LAKESIDE NATIONAL BANK,
 EAST SIDE OF FM 740
 ELEV = 567.16

ALL DRIVEWAY RADII ARE 15'
 UNLESS OTHERWISE NOTED.

SCALE: 1"=50' HORIZONTAL
 1"=5' VERTICAL

--- R.O.W. MARKER TYPE II

REMOVALS	
DRAINAGE	1, 20, 21, 22, 47
DESIGN FILES	2, 3, 9, 11, 13, 25, 42, 8, 61
DESIGN FILES	20
DESIGN FILES	1, 2, 6, 20, 33, 34



G. E. Metzger
 5/13/96

PLAN PROFILE SHEET
 SHEET 2 OF 3

FED. RD. DIV. NO.	FEDERAL AID PROJECT NO.	SHEET NO.
6	STP 96 (830) MM	15
STATE	COUNTY	
TEXAS	ROCKWALL	
CONT.	SECT.	JOB
1014	03	041
		HIGHWAY NO.
		FM 740

\$\$\$DATE\$\$\$

EXT 441