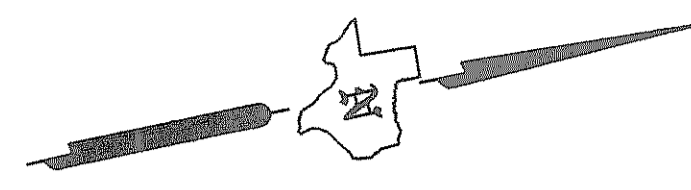


### DANIEL ATKINS SURVEY A-1

### B. J. T. LEWIS SURVEY A-255



39  
M. L. TURBEVILLE  
DEED  
VOL. PG.  
776 S.F.  
REM. 21,614 S.F.

40  
RICHARD CULLINS &  
JOANN CULLINS  
DEED  
VOL. PG.  
1557 S.F.  
REM. 31,157 S.F.

41  
B. A. KLUTTS  
DEED  
VOL. PG.  
1296 S.F.  
REM. 30,024 S.F.

44  
V. M. WALLACE  
E. B. LOFLAND  
DEED  
VOL. PG.  
316 S.F.  
REM. 10,184 S.F.

45A  
JEFFREY SCOTT  
PETTIGREW  
AND SPOUSE,  
PAMELA J.  
PETTIGREW  
DEED  
VOL. PG.  
679 S.F.  
REM. 9775 S.F.

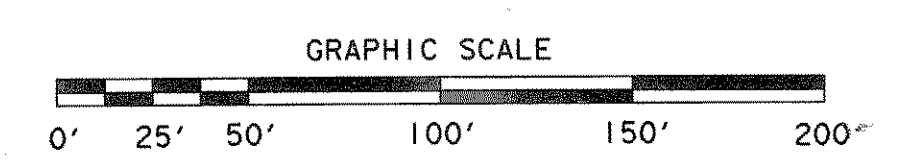
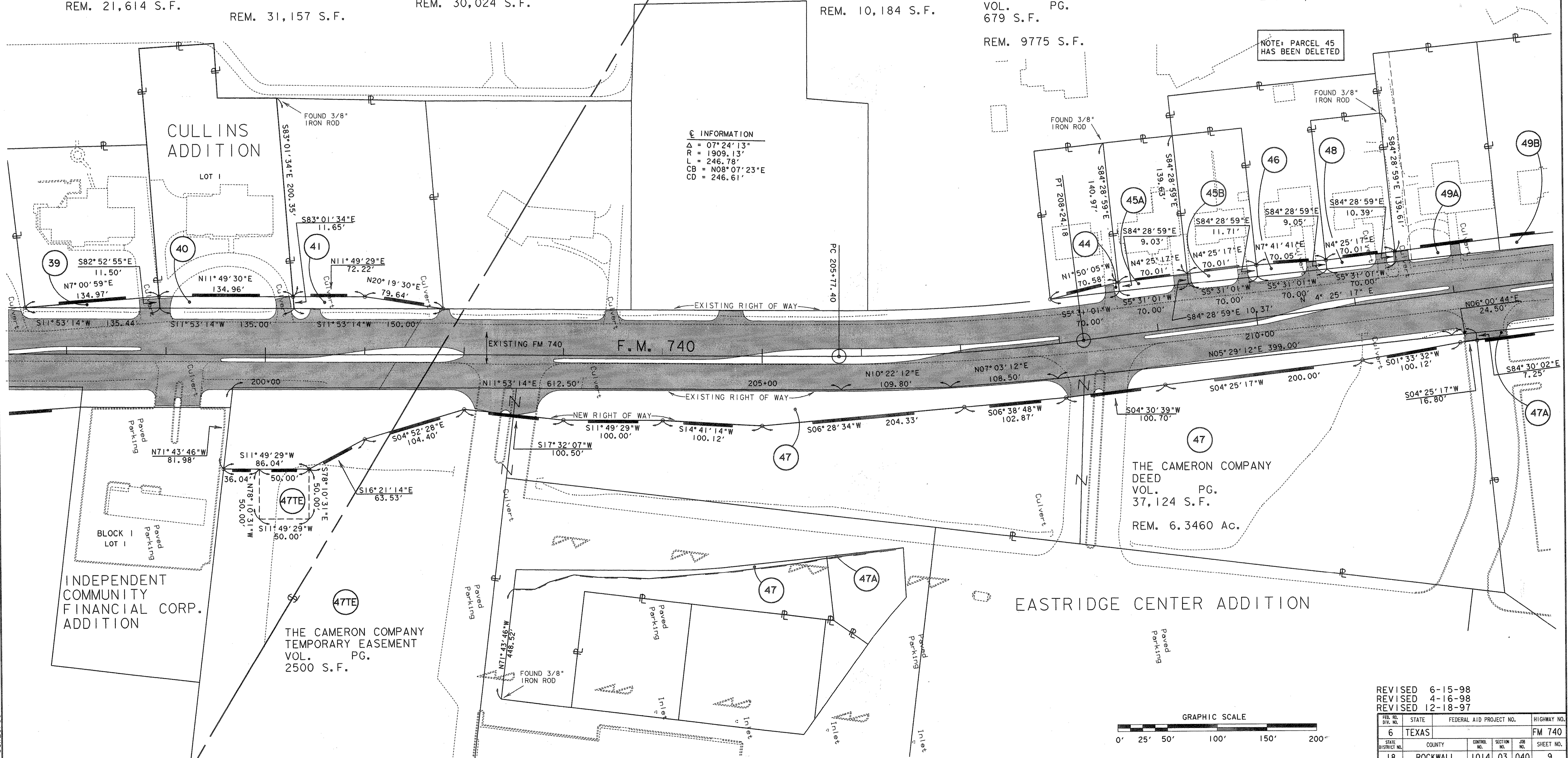
45B  
TOM H. WALKER  
AND WIFE,  
SUE ANN WALKER  
DEED  
VOL. PG.  
773 S.F.  
REM. 9681 S.F.

46  
OTIS DAVENPORT  
DEED  
VOL. PG.  
726 S.F.  
REM. 18,092 S.F.

48  
BILLY COLLINS  
DEED  
VOL. PG.  
680 S.F.  
REM. 9820 S.F.

⊕ INFORMATION  
Δ = 07°24'13"  
R = 1909.13'  
L = 246.78'  
CB = N08°07'23"E  
CD = 246.61'

NOTE: PARCEL 45  
HAS BEEN DELETED



REVISED	6-15-98		
REVISED	4-16-98		
REVISED	12-18-97		
FED. DIST. NO.	STATE	FEDERAL AID PROJECT NO.	HIGHWAY NO.
18	TEXAS		FM 740
DISTRICT NO.	COUNTY	CONTROL NO.	SECTION NO.
	ROCKWALL	1014	03 040
			SHEET NO.
			9