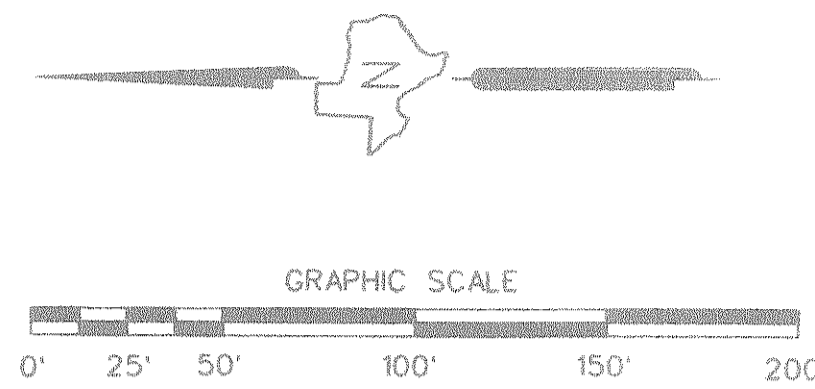


45
 JOHN L. JONES, TRUSTEE
 DEED
 INSTR. NO. 2009-00414654
 200 S.F. (0.0046 ACRE)
 REM = 11,243 S.F.
 (0.2581 ACRE)

46
 JOHN L. JONES, TRUSTEE
 DEED
 INSTR. NO. 2009-00414655
 PART 1 - 199 S.F. (0.0045 AC.)
 PART 2 - 112 S.F. (0.0025 AC.)
 REM = 13,126 S.F. (0.3013 AC.)

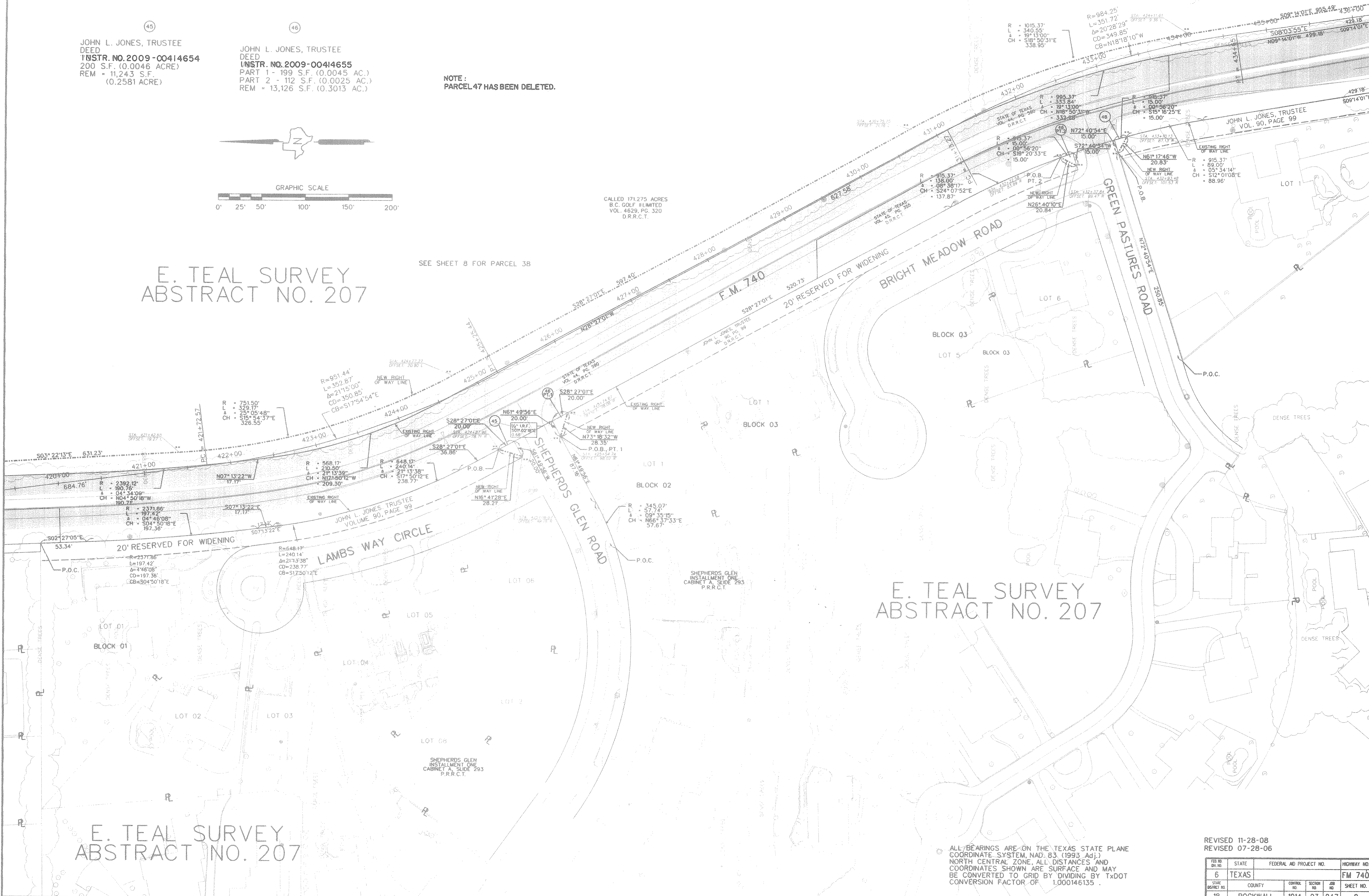
NOTE:
 PARCEL 47 HAS BEEN DELETED.



CALLED 171.275 ACRES
 B.C. GOLF LIMITED
 VOL. 4629, PG. 320
 D.R.R.C.T.

E. TEAL SURVEY
 ABSTRACT NO. 207

SEE SHEET 8 FOR PARCEL 38



E. TEAL SURVEY
 ABSTRACT NO. 207

E. TEAL SURVEY
 ABSTRACT NO. 207

ALL BEARINGS ARE ON THE TEXAS STATE PLANE
 COORDINATE SYSTEM, NAD 83 (1993 Adj.)
 NORTH CENTRAL ZONE, ALL DISTANCES AND
 COORDINATES SHOWN ARE SURFACE AND MAY
 BE CONVERTED TO GRID BY DIVIDING BY TxDOT
 CONVERSION FACTOR OF 1.000146135.

REVISED 11-28-08
 REVISED 07-28-08

FED. RD. DIST. NO.	STATE	FEDERAL AID PROJECT NO.	HIGHWAY NO.
6	TEXAS		FM 740
STATE DISTRICT NO.	COUNTY	CONTRACT NO.	SECTION NO.
18	ROCKWALL	1014	03 047
			208 01
			SHEET NO.
			9