

E. TEAL SURVEY ABSTRACT NO. 207

CHANDLERS LANDING COMMUNITY
ASSOCIATION, INC.
VOL. 112, PG. 546

NOTE:
PARCEL 25 HAS BEEN DELETED.

23
VIBHA PATEL AND SATISH PATEL
DEED
INSTR. NO. 2009-00420981
49 S.F. (0.0011 ACRE)
REM = 27,400 S.F.
(0.6290 ACRE)

24
CHANDLERS LANDING COMMUNITY
ASSOCIATION, INC.
DEED
INSTR. NO. 2008-00409404
5,162 S.F. (0.1185 ACRE)

25
GEORGE R. ROWLAND &
JULIA ROLAND
DEED
INSTR. NO. 2009-00420104
14,408 S.F. (0.3308 ACRE)
REM = 413,404 S.F.
(9.4904 ACRES)

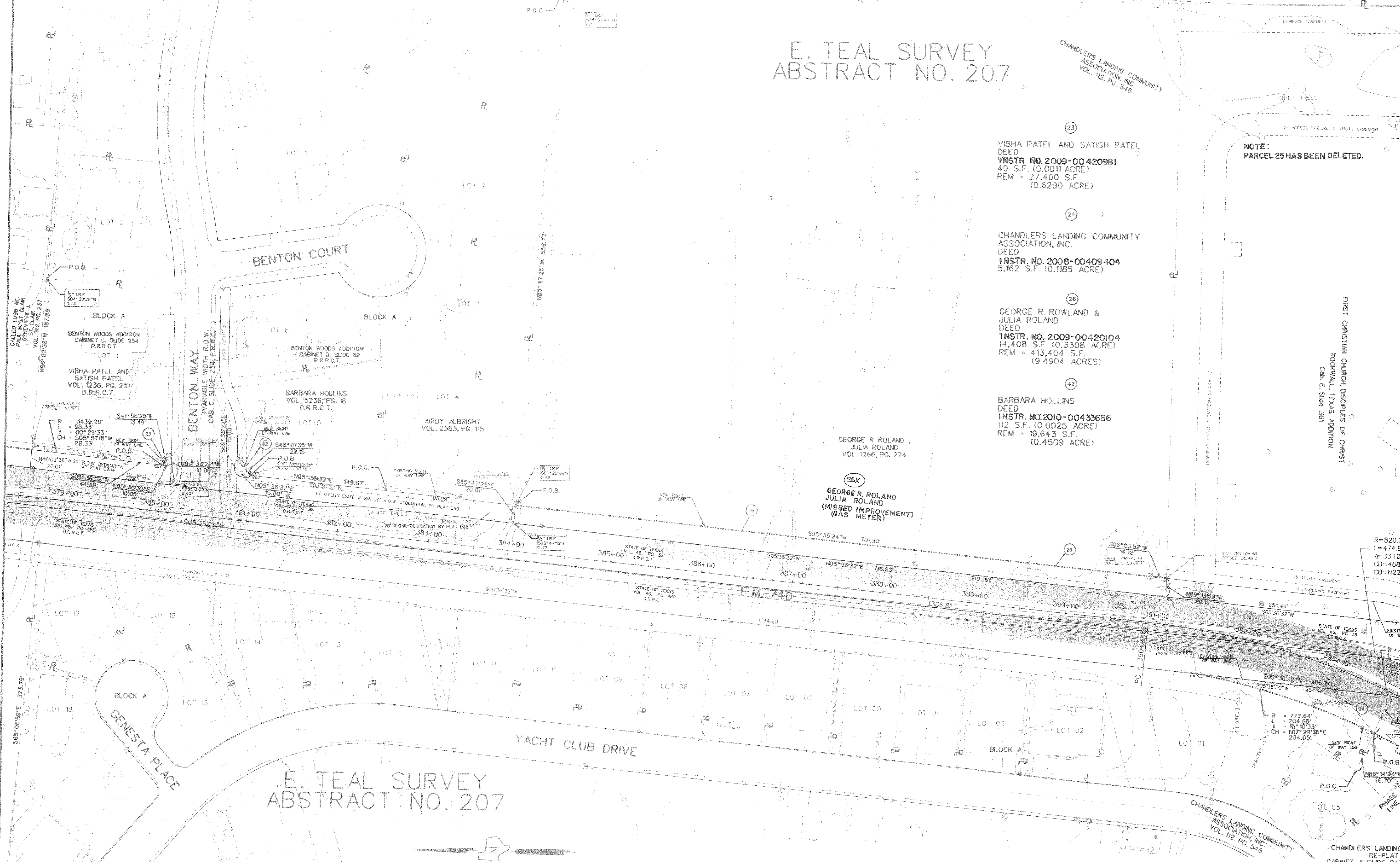
26
BARBARA HOLLINS
DEED
INSTR. NO. 2010-00433686
112 S.F. (0.0025 ACRE)
REM = 19,643 S.F.
(0.4509 ACRE)

GEORGE R. ROLAND,
JULIA ROLAND
VOL. 1266, PG. 274

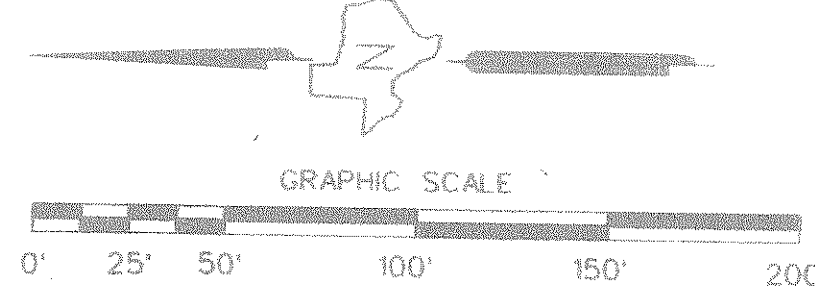
26X
GEORGE R. ROLAND
JULIA ROLAND
(MISSED IMPROVEMENT)
(GAS METER)

FIRST CHRISTIAN CHURCH, DISCIPLES OF CHRIST
ROCKWALL, TEXAS ADDITION
Cob. E. Slide 361

R=820.21'
L=474.97'
Δ=33°10'44"
CD=468.36'
CB=N22°10'47"E



E. TEAL SURVEY ABSTRACT NO. 207



ALL BEARINGS ARE ON THE TEXAS STATE PLANE
COORDINATE SYSTEM, NAD 83 (1993 ADJ.)
MURKIN ZONAL ZONE. ALL DISTANCES AND
COORDINATES SHOWN ARE SURFACE AND MAY
BE CONVERTED TO GRID BY DIVIDING BY TxDOT
CONVERSION FACTOR OF 1.000146135.

REVISED 11-28-08
REVISED 07-28-06 REVISED 10-02-09 26X.

FED. DIST. DISTRICT NO.	STATE	FEDERAL AID PROJECT NO.	HIGHWAY NO.
6	TEXAS		FM 740
STATE DISTRICT NO.	COUNTY	CONTR. NO.	SECTION NO.
1B	ROCKWALL	1014	03 047
JOB NO.	SHEET NO.		
	6		