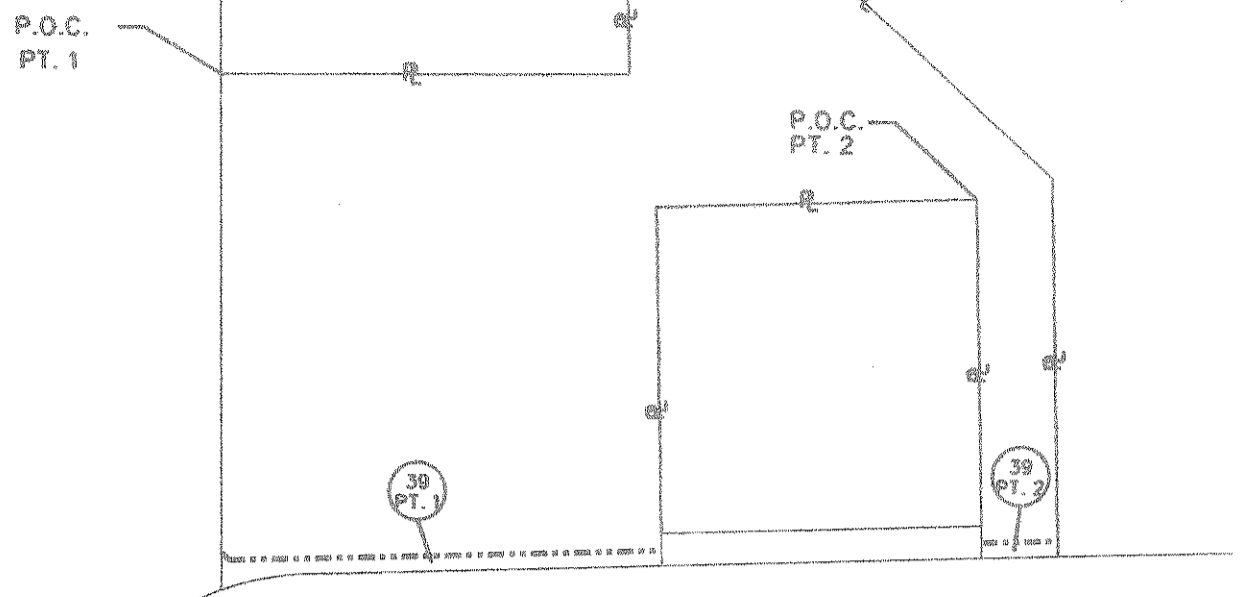


# E. TEAL SURVEY ABSTRACT NO. 207

LOWELL DOUGLASS HALL  
AND JUSTIN KIMBELL HALL  
DEED  
INSTR. NO. 2009-00415674  
PART 1 - 3,057 S.F. (0.0701 AC.)  
PART 2 - 495 S.F. (0.0113 AC.)  
REM = 137,054 S.F. (3.1463 AC.)



SEE SHEET 8 FOR PARCEL 38  
CALLED 171.275 ACRES  
BC GOLF II LIMITED  
VOL. 4629, PG. 320  
D.R.R.C.T.

CALLLED 171.275 ACRES  
BC GOLF II LIMITED  
VOL. 4629, PG. 320  
D.R.R.C.T.

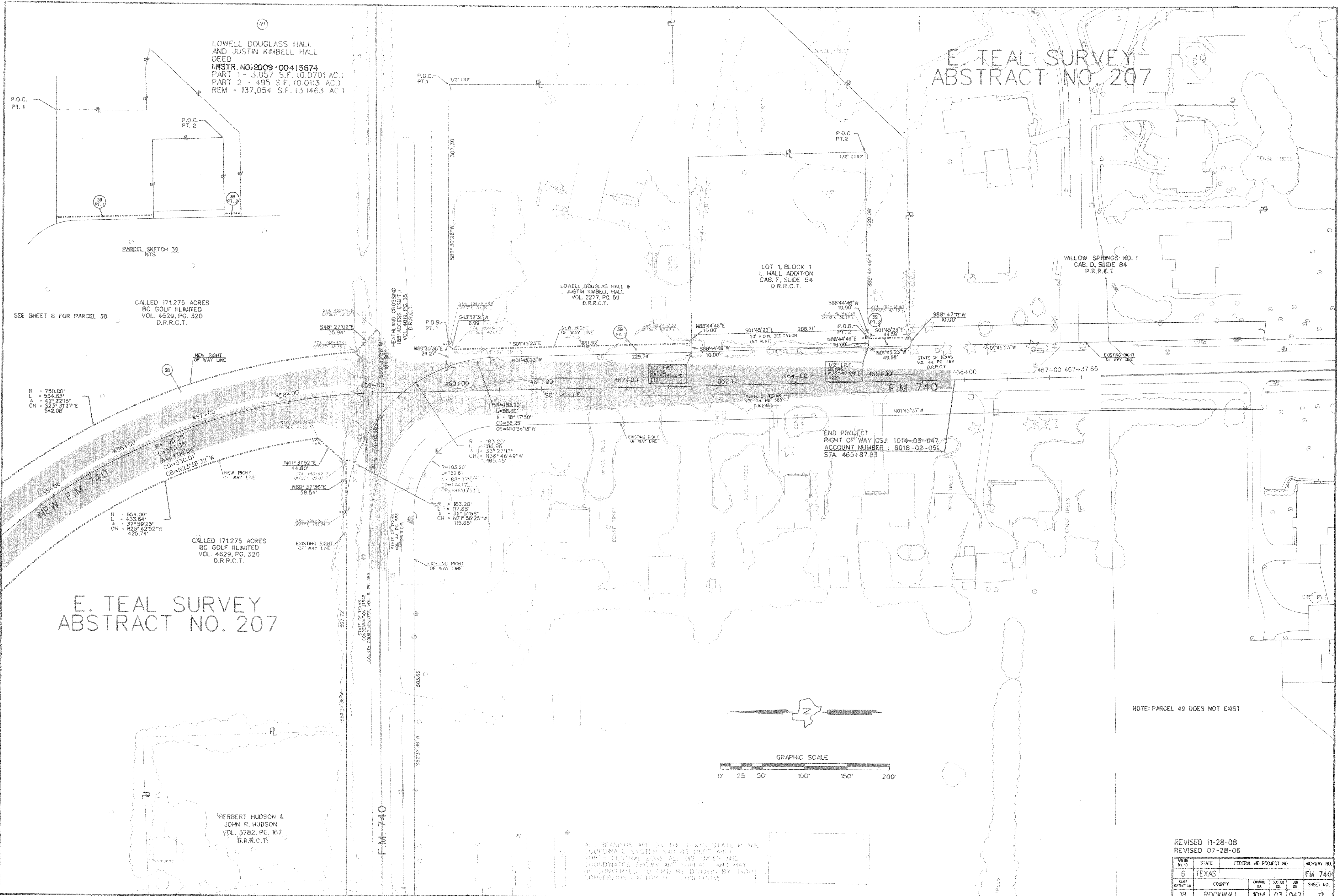
HERBERT HUDSON &  
JOHN R. HUDSON  
VOL. 3782, PG. 167  
D.R.R.C.T.

LOWELL DOUGLASS HALL &  
JUSTIN KIMBELL HALL  
VOL. 2277, PG. 59  
D.R.R.C.T.

LOT 1, BLOCK 1  
L. HALL ADDITION  
CAB. F. SLIDE 54  
D.R.R.C.T.

WILLOW SPRINGS NO. 1  
CAB. D. SLIDE 84  
P.R.R.C.T.

END PROJECT  
RIGHT OF WAY CSJ: 1014-03-047  
ACCOUNT NUMBER: 8018-02-051  
STA. 465+87.85



NOTE: PARCEL 49 DOES NOT EXIST

REVISED 11-28-08  
REVISED 07-28-06

ALL BEARINGS ARE ON THE TEXAS STATE PLANE  
COORDINATE SYSTEM, NAD 83 (1993) WITH  
NORTH CENTRAL ZONE, ALL DISTANCES AND  
COORDINATES SHOWN ARE SURFACE AND MAY  
BE CONVERTED TO GRID BY DIVIDING BY TXD  
CONVERSION FACTOR OF 1.00044655

FED. RD. DIST. NO.	STATE	FEDERAL AID PROJECT NO.	HIGHWAY NO.	
6	TEXAS		FM 740	
STATE ABSTRACT NO.	COUNTY	CONTRACT NO.	SECTION NO.	SHEET NO.
18	ROCKWALL	1014	03 047	12