

TEXAS HIGHWAY DEPARTMENT ROCKWALL COUNTY F.M. HIGHWAY NO. 3097

PLANS OF PROPOSED RIGHT OF WAY PROJECT
PROJECT NO.

FROM : F.M. 740, 0.4 MILE SOUTH OF I.H. 30, SOUTHEAST

TO : F.M. 549

NET LENGTH OF PROJECT = 13,517.23 FT. = 2.560 MI.

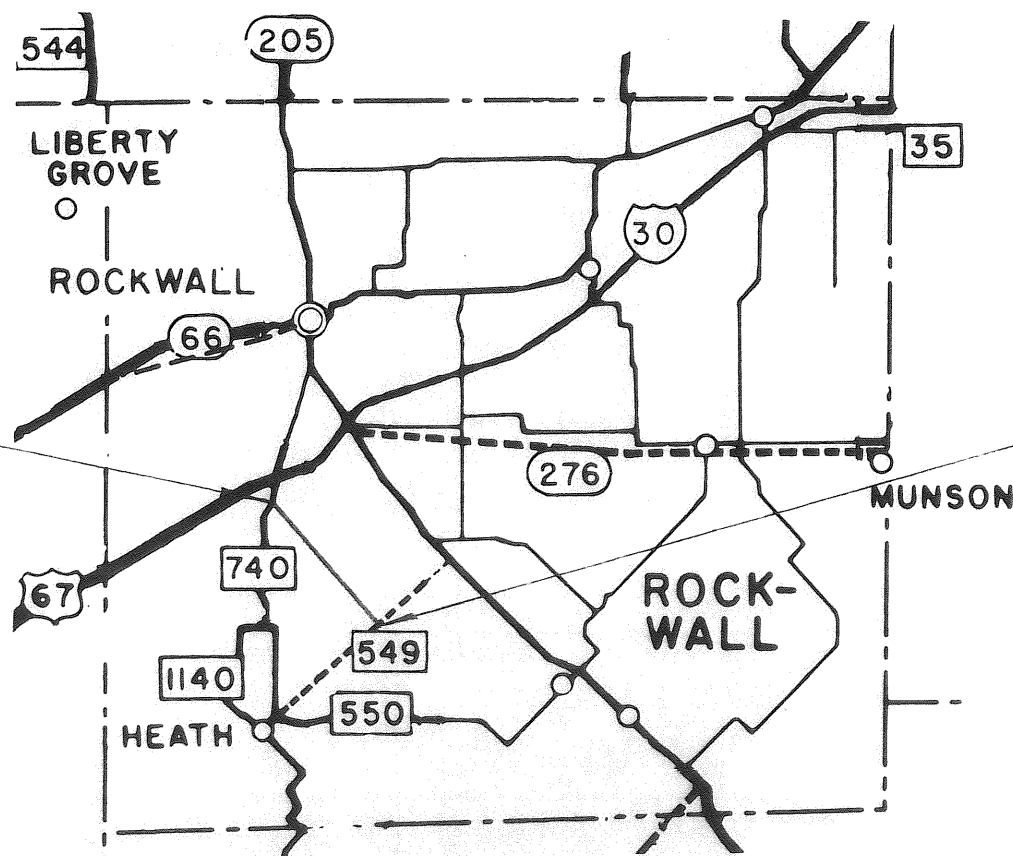
SCALE: 1" = 100'

FED. RD. DIV. NO.	STATE	PROJECT NO.			SHEET NO.
6	TEXAS	A 3148-1-1			1
STATE DIST. NO.	COUNTY	CONT.	SECT.	JOB	HIGHWAY NO.
18	ROCKWALL	3148	1		FM3097

BEGIN RIGHT OF WAY PROJECT
STATION 0+00
PROJECT NO.

END RIGHT OF WAY PROJECT
STATION 135+17.23
PROJECT NO.

- CONVENTIONAL SIGNS**
- STATE OR NATIONAL LINE
 - CITY OR VILLAGE LINE
 - COUNTY LINE
 - BASE OR SURVEY LINE ○
 - RIGHT OF WAY LINE ○
 - RIGHT OF WAY MARKERS ●
 - FENCE LINE xx
 - RAILROAD
 - TRAVELLED WAY
 - CULVERT OR BRIDGE //
 - POWER LINE ○○
 - TELEGRAPH OR TELEPHONE ○○



CORRECT: Oct. 10, 1968

John V. Blain
SENIOR RESIDENT ENGINEER

RECOMMENDED FOR APPROVAL: 4-9-69

John V. Keller
DISTRICT ENGINEER

APPROVED: _____

JAMES SMITH SURVEY ABSTRACT NO. 200

1

O.L. Steger
80 Acres
Vol. 85 Page 42
Lt. Sta (FM 740 153+32) - Lt. FM 3097 12+94
Deed
0.675 Acres

1

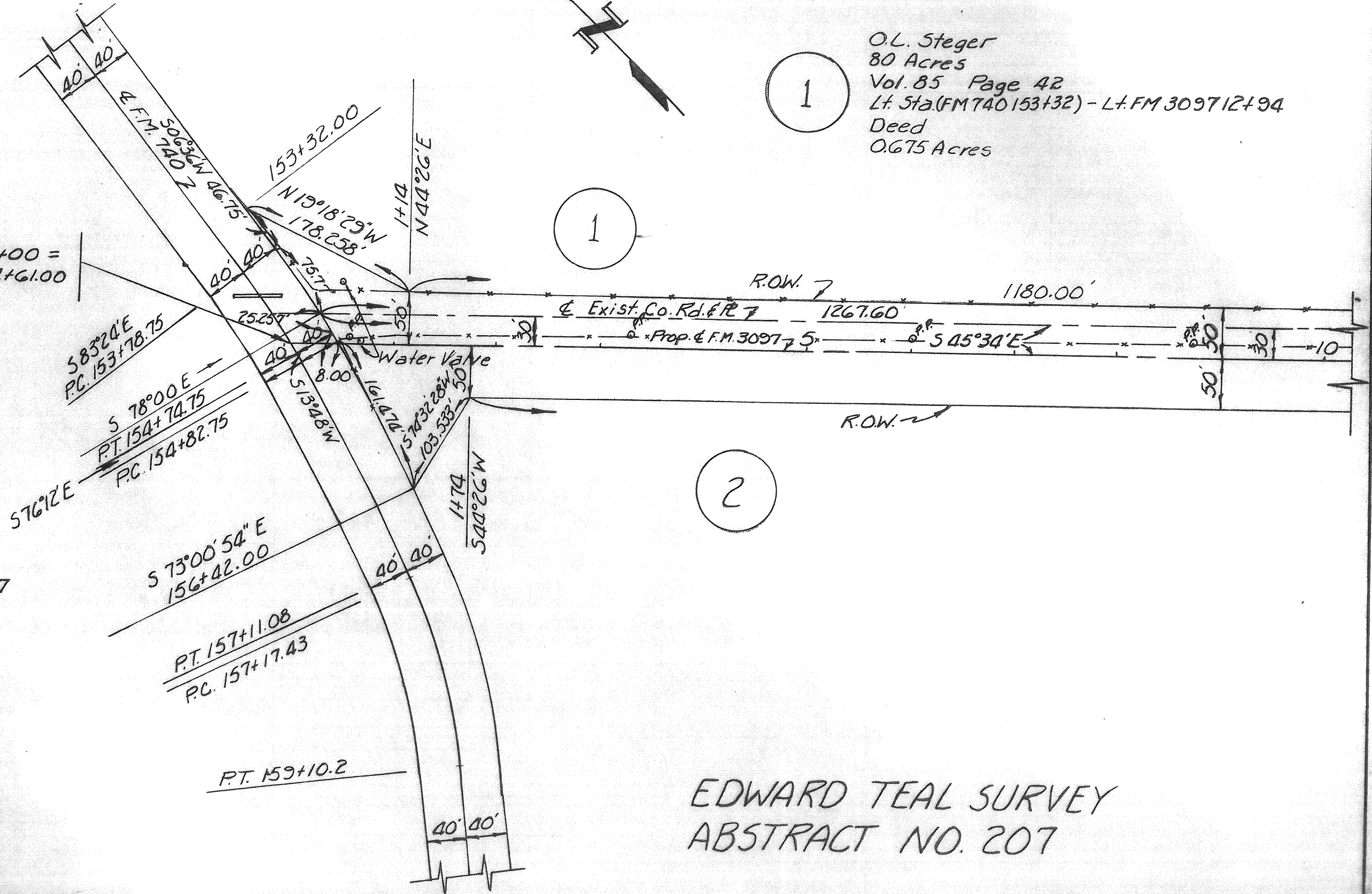
2

F.M. 3097 Sta. 0+00 =
F.M. 740 Sta. 154+61.00

P.I. Sta. 154+26.84
Δ = 7°12' Rt.
D = 7°30'
T = 48.09
L = 96.00
R = 763.944

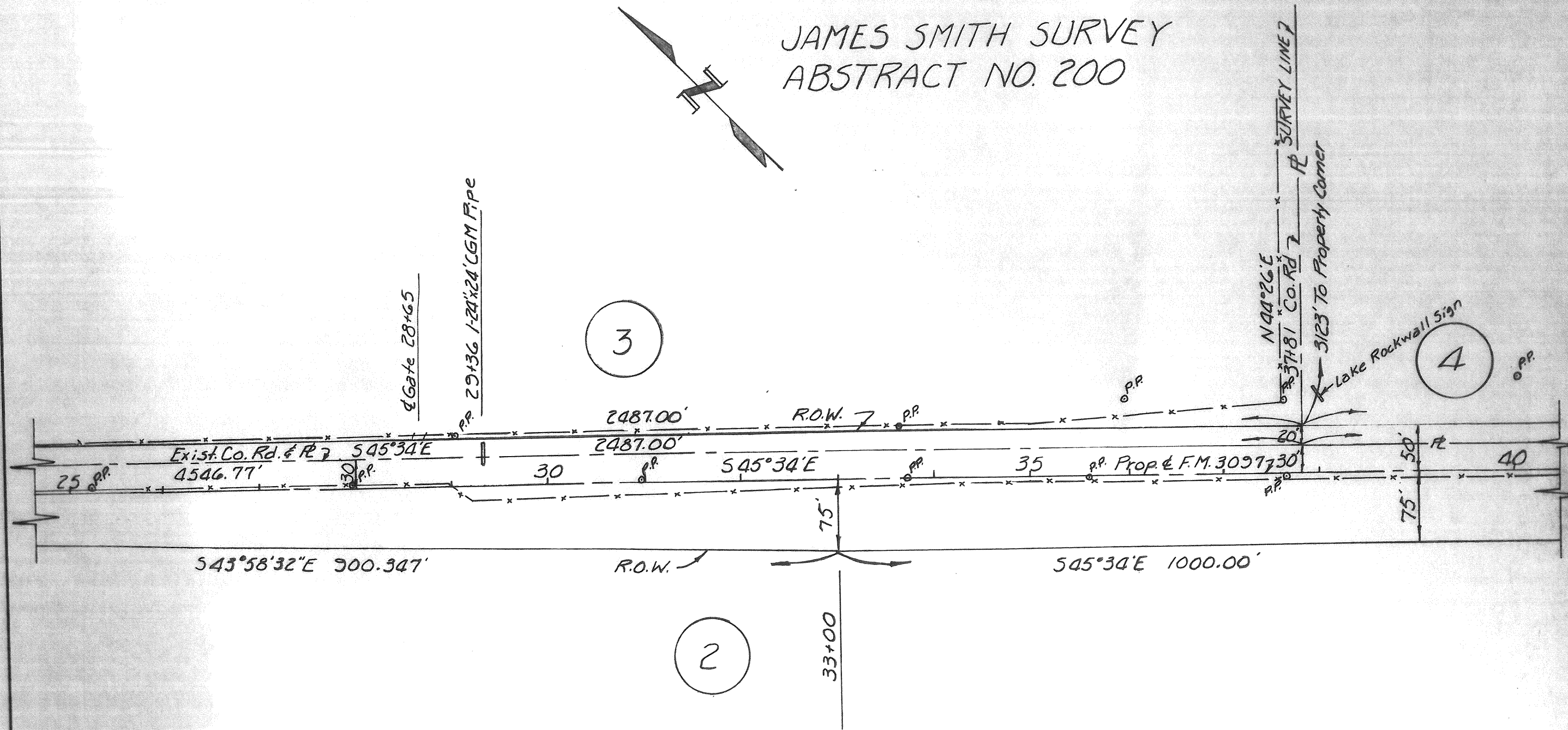
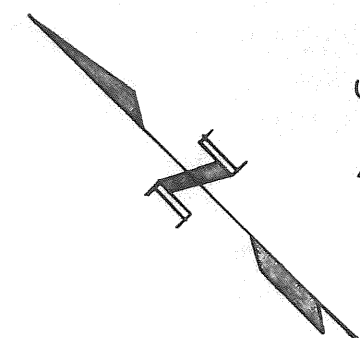
P.I. Sta. 155+96.97
Δ = 4°34' Rt.
D = 2°00'
T = 114.22
L = 228.33
R = 2864.789

P.I. Sta. 158+14.81
Δ = 19°16' Rt.
D = 10°00'
T = 97.38
L = 192.67
R = 572.958



EDWARD TEAL SURVEY ABSTRACT NO. 207

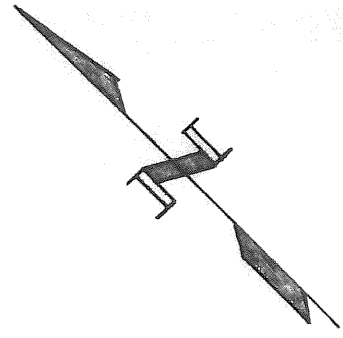
JAMES SMITH SURVEY
ABSTRACT NO. 200



EDWARD TEAL SURVEY
ABSTRACT NO. 207

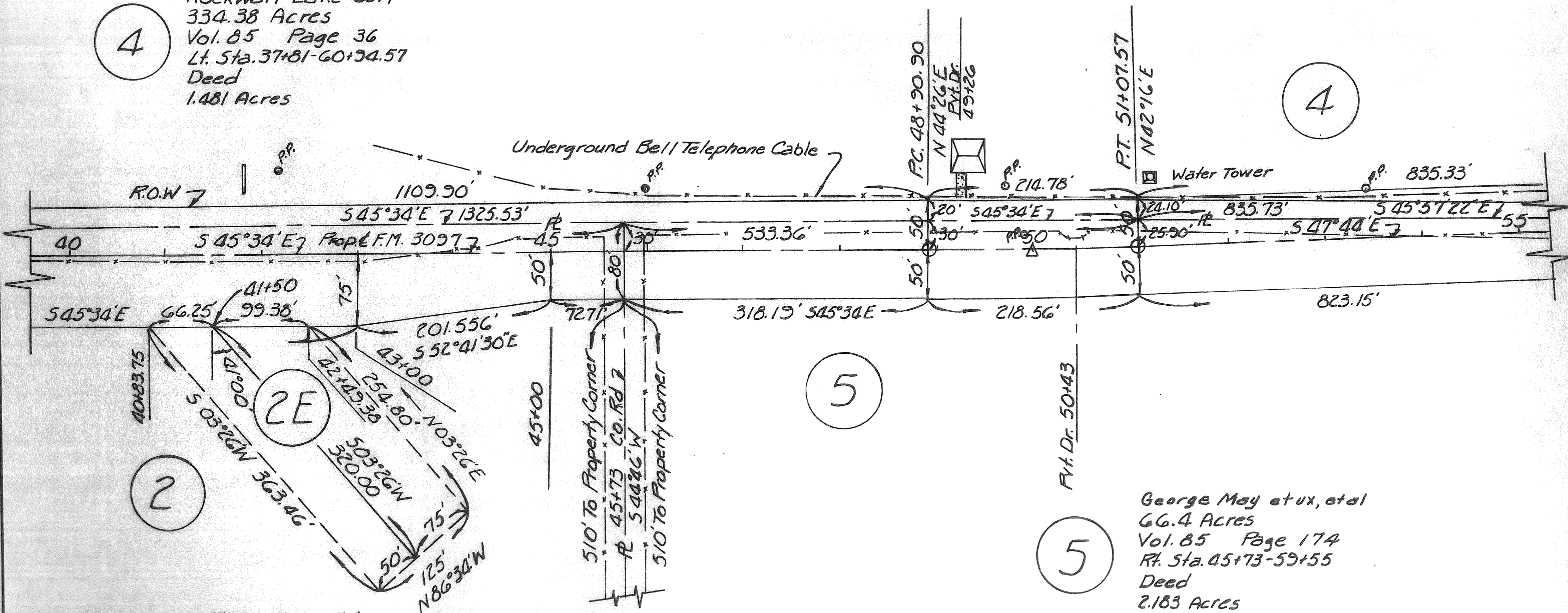
G. WELLS SURVEY ABSTRACT NO. 219

P.I. Sta. 49+99.25
 $\Delta = 2^{\circ}10' Lt.$
 $D = 1^{\circ}00'$
 $T = 108.35$
 $L = 216.67$
 $R = 5729.578$



4
 Rockwall Lake Corp.
 334.38 Acres
 Vol. 85 Page 36
 Lt. Sta. 37+81-60+94.57
 Deed
 1.481 Acres

4



2

5

5

George May et ux, et al
 66.4 Acres
 Vol. 85 Page 174
 Rt. Sta. 45+73-59+55
 Deed
 2.183 Acres

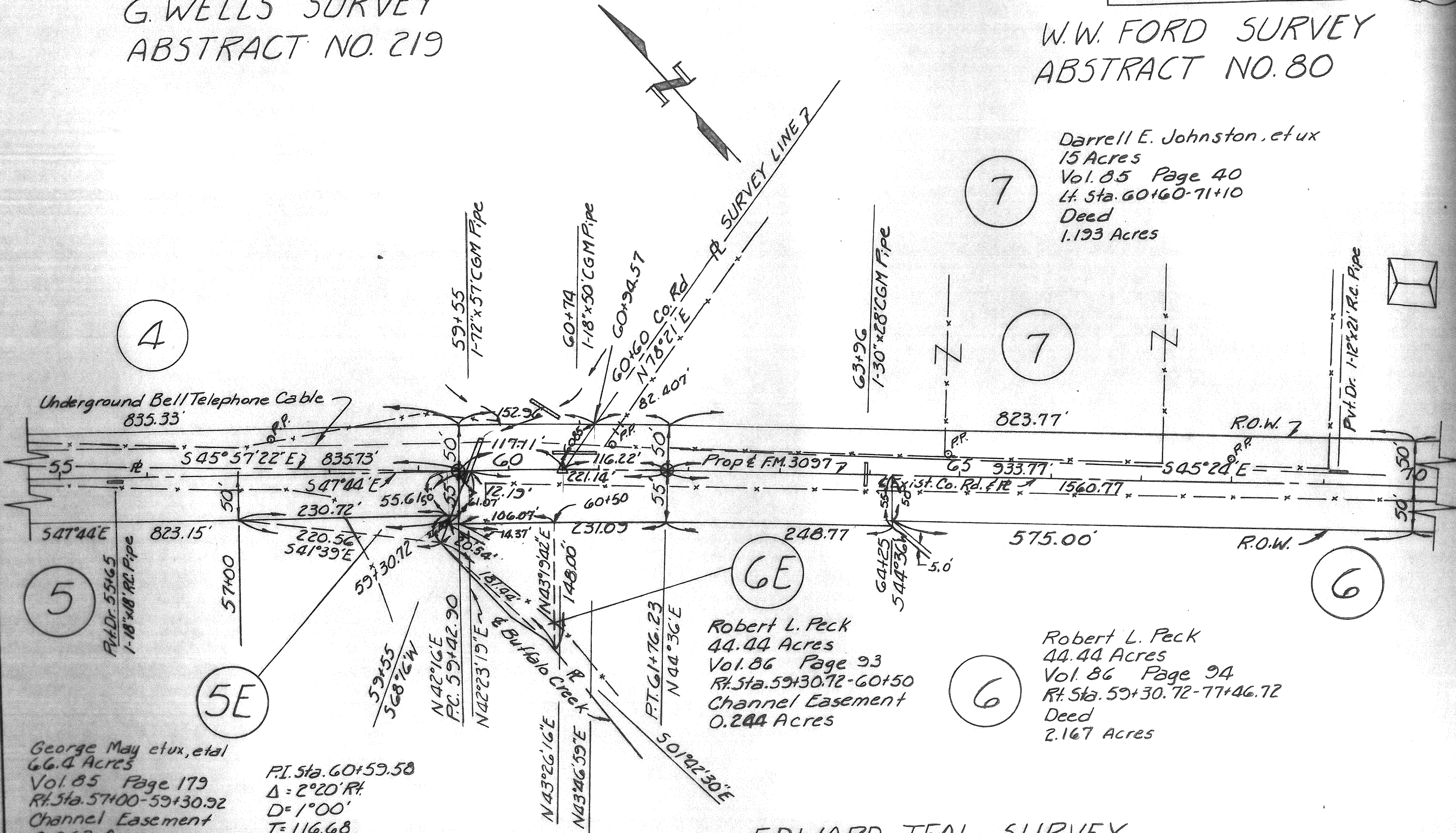
2E
 Kirby Albright
 37.29 Acre Tract
 Vol. 86 Page 97
 Rt. Sta. 40+83.75-42+49.38
 Channel Easement
 0.887 Acres

EDWARD TEAL SURVEY ABSTRACT NO. 207

G. WELLS SURVEY
 ABSTRACT NO. 219

W. W. FORD SURVEY
 ABSTRACT NO. 80

Darrell E. Johnston, et ux
 15 Acres
 Vol. 85 Page 40
 Lt. Sta. 60+60-71+10
 Deed
 1.193 Acres



George May et ux, et al
 66.4 Acres
 Vol. 85 Page 179
 Rt. Sta. 57+00-59+30.92
 Channel Easement
 0.062 Acres

P.I. Sta. 60+59.58
 $\Delta = 2^{\circ}20'$ R.
 $D = 1^{\circ}00'$
 $T = 116.68$
 $L = 233.33$
 $R = 5729.578$

Robert L. Peck
 44.44 Acres
 Vol. 86 Page 93
 Rt. Sta. 59+30.72-60+50
 Channel Easement
 0.244 Acres

Robert L. Peck
 44.44 Acres
 Vol. 86 Page 94
 Rt. Sta. 59+30.72-77+46.72
 Deed
 2.167 Acres

EDWARD TEAL SURVEY
 ABSTRACT NO. 207

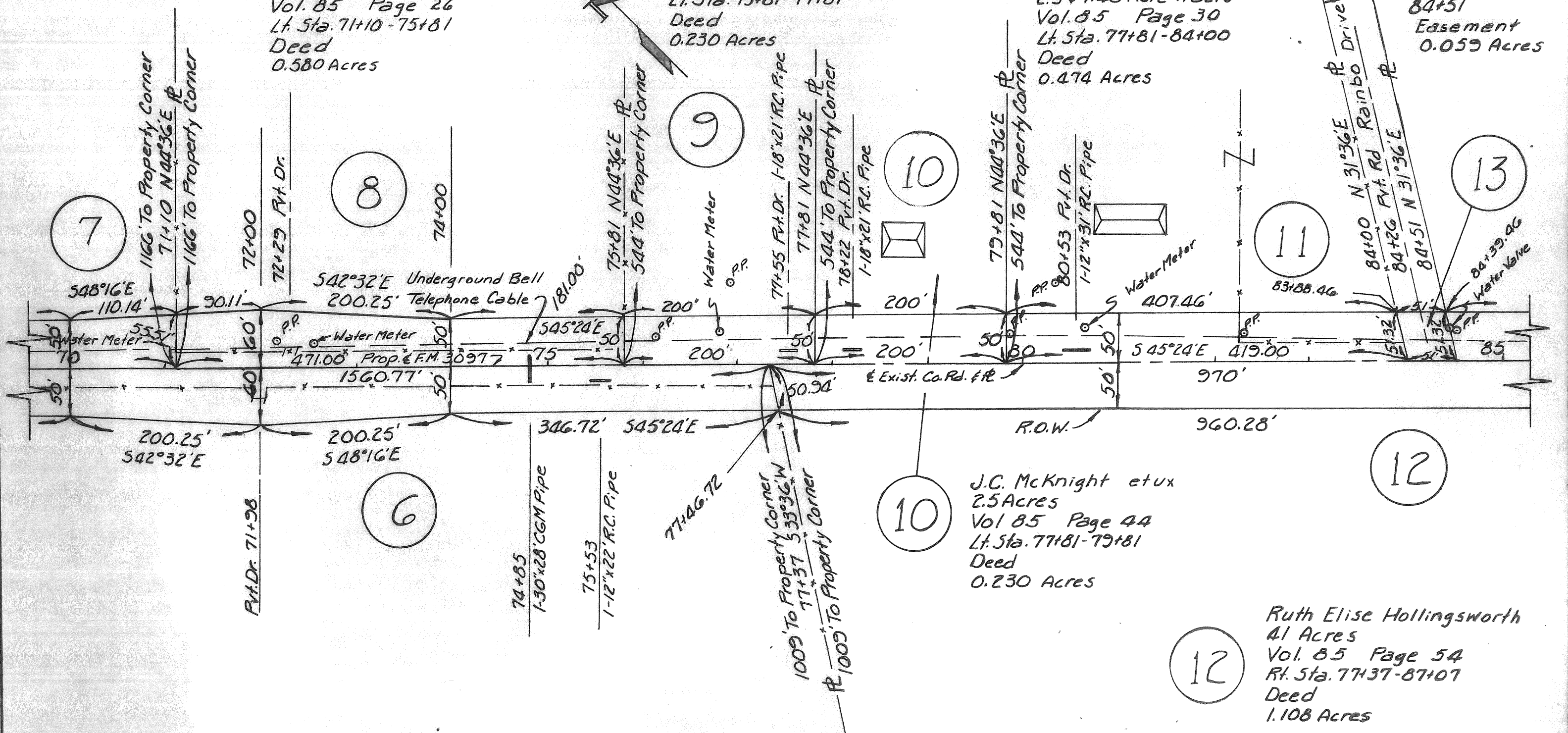
W.W. FORD SURVEY ABSTRACT NO. 80

8
 I. L. Wilson, et ux
 15 Acres
 Vol. 85 Page 26
 Lt. Sta. 71+10 - 75+81
 Deed
 0.580 Acres

9
 Curtis Hopkins, Sr. et ux
 2.4 Acres
 Vol. 85 Page 34
 Lt. Sta. 75+81 - 77+81
 Deed
 0.230 Acres

11
 William H. Hartin et ux
 2.5 & 1.48 Acre Tracts
 Vol. 85 Page 30
 Lt. Sta. 77+81 - 84+00
 Deed
 0.474 Acres

County of Rockwall
 70.06 Acres (Orig.)
 Vol. 85 Page 32
 Lt. Sta. 83+88.46 -
 84+51
 Easement
 0.059 Acres

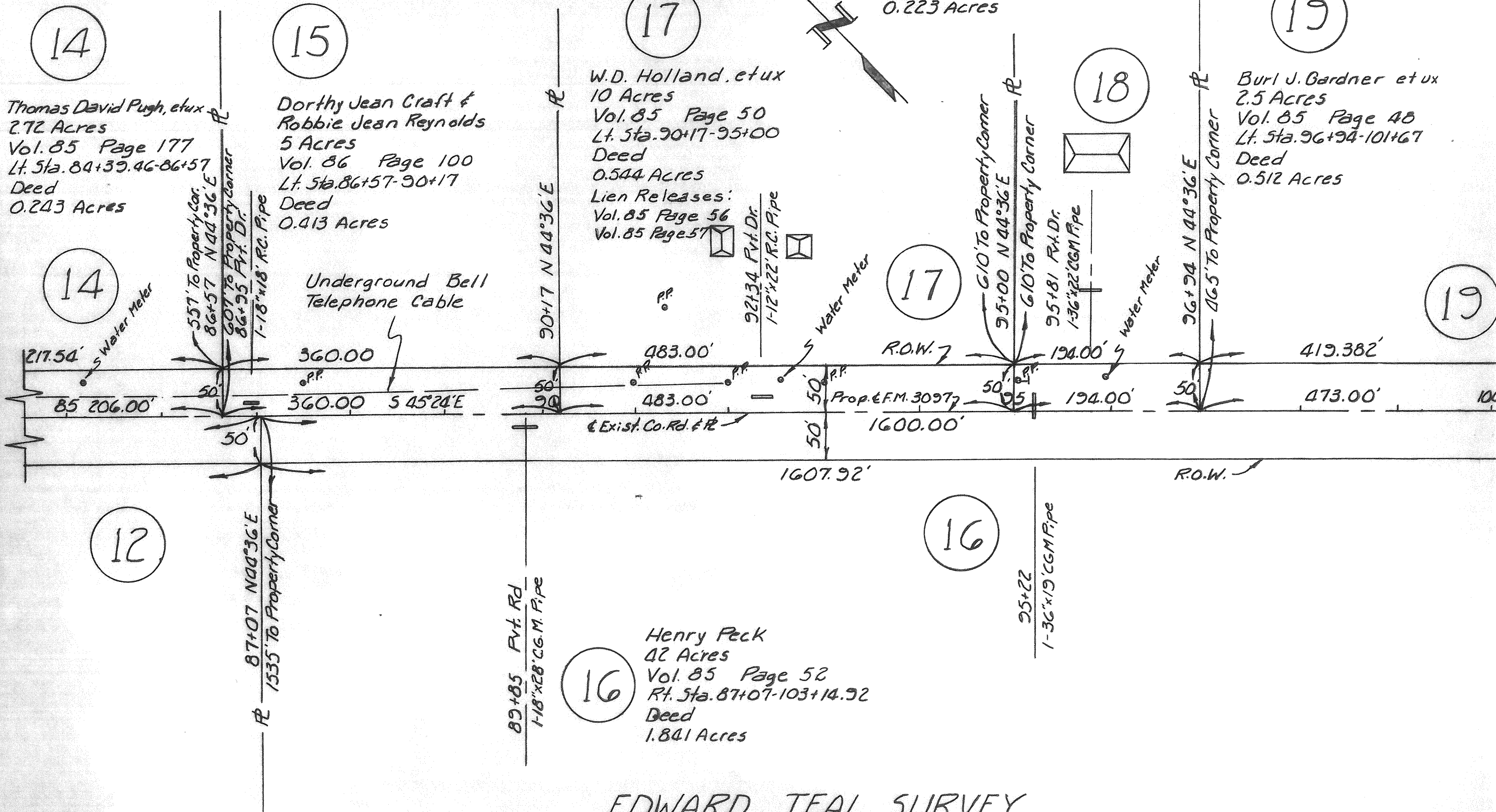


10
 J.C. McKnight et ux
 2.5 Acres
 Vol. 85 Page 44
 Lt. Sta. 77+81 - 79+81
 Deed
 0.230 Acres

12
 Ruth Elise Hollingsworth
 41 Acres
 Vol. 85 Page 54
 Rt. Sta. 77+37 - 87+07
 Deed
 1.108 Acres

EDWARD TEAL SURVEY ABSTRACT NO. 207

W.W. FORD SURVEY
ABSTRACT NO. 80



16
Henry Peck
42 Acres
Vol. 85 Page 52
Pt. Sta. 87+07-103+14.92
Deed
1.841 Acres

17
W.D. Holland, et ux
10 Acres
Vol. 85 Page 50
Lt. Sta. 90+17-95+00
Deed
0.544 Acres
Lien Releases:
Vol. 85 Page 56
Vol. 85 Page 57

18
Burl J. Gardner et ux
2.5 Acres
Vol. 85 Page 46
Lt. Sta. 95+00-96+94
Deed
0.223 Acres

19
Burl J. Gardner et ux
2.5 Acres
Vol. 85 Page 48
Lt. Sta. 96+94-101+67
Deed
0.512 Acres

EDWARD TEAL SURVEY
ABSTRACT NO. 207

W.W. FORD SURVEY
 ABSTRACT NO. 80

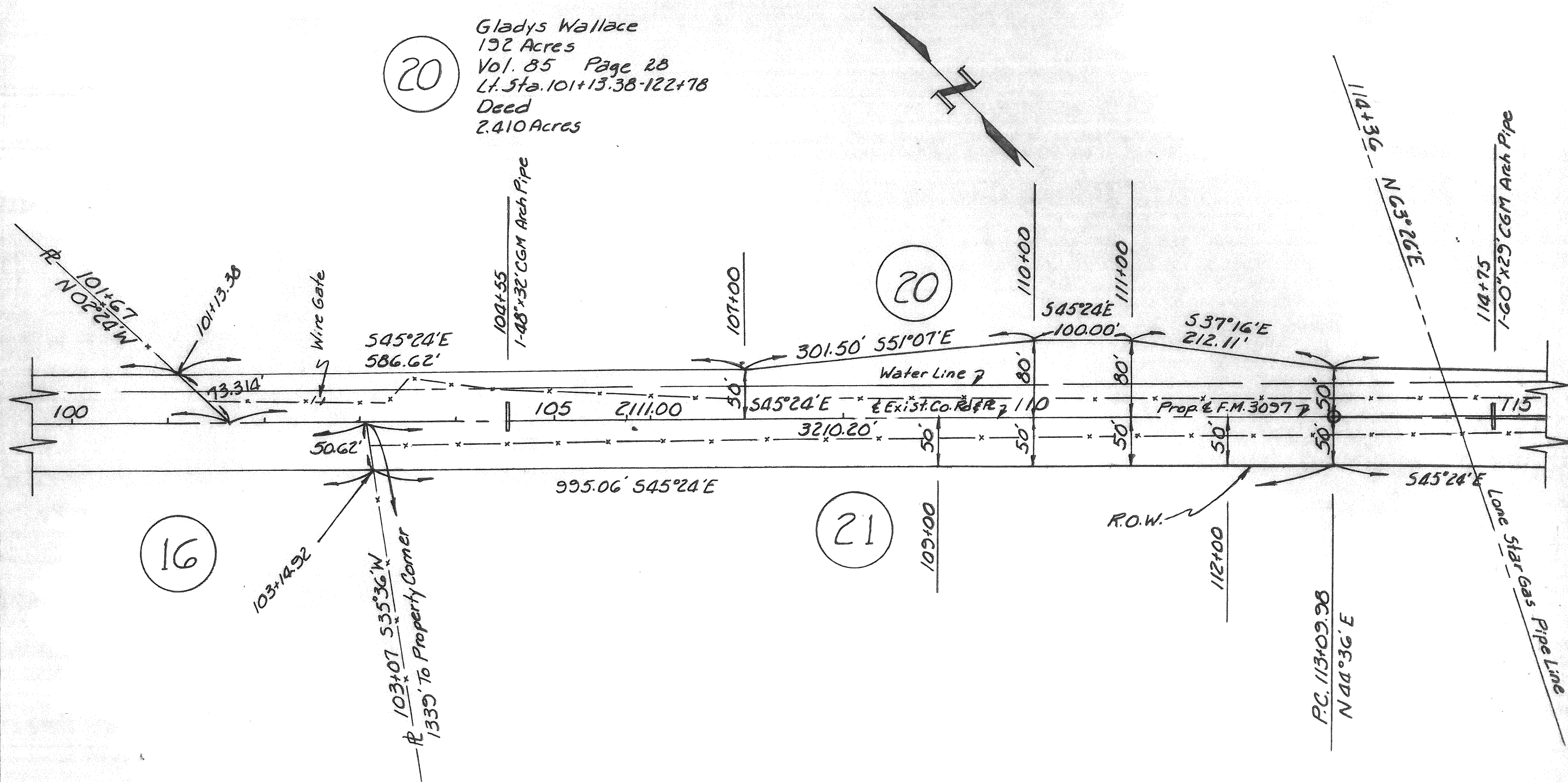
20

Gladys Wallace
 192 Acres
 Vol. 85 Page 28
 Lt. Sta. 101+13.38-122+78
 Deed
 2.410 Acres

20

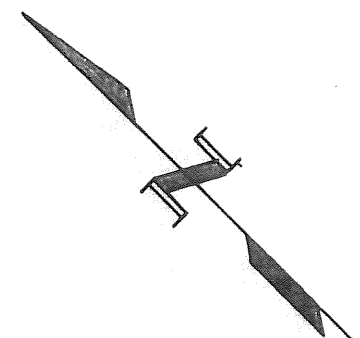
21

16



EDWARD TEAL SURVEY
 ABSTRACT NO. 207

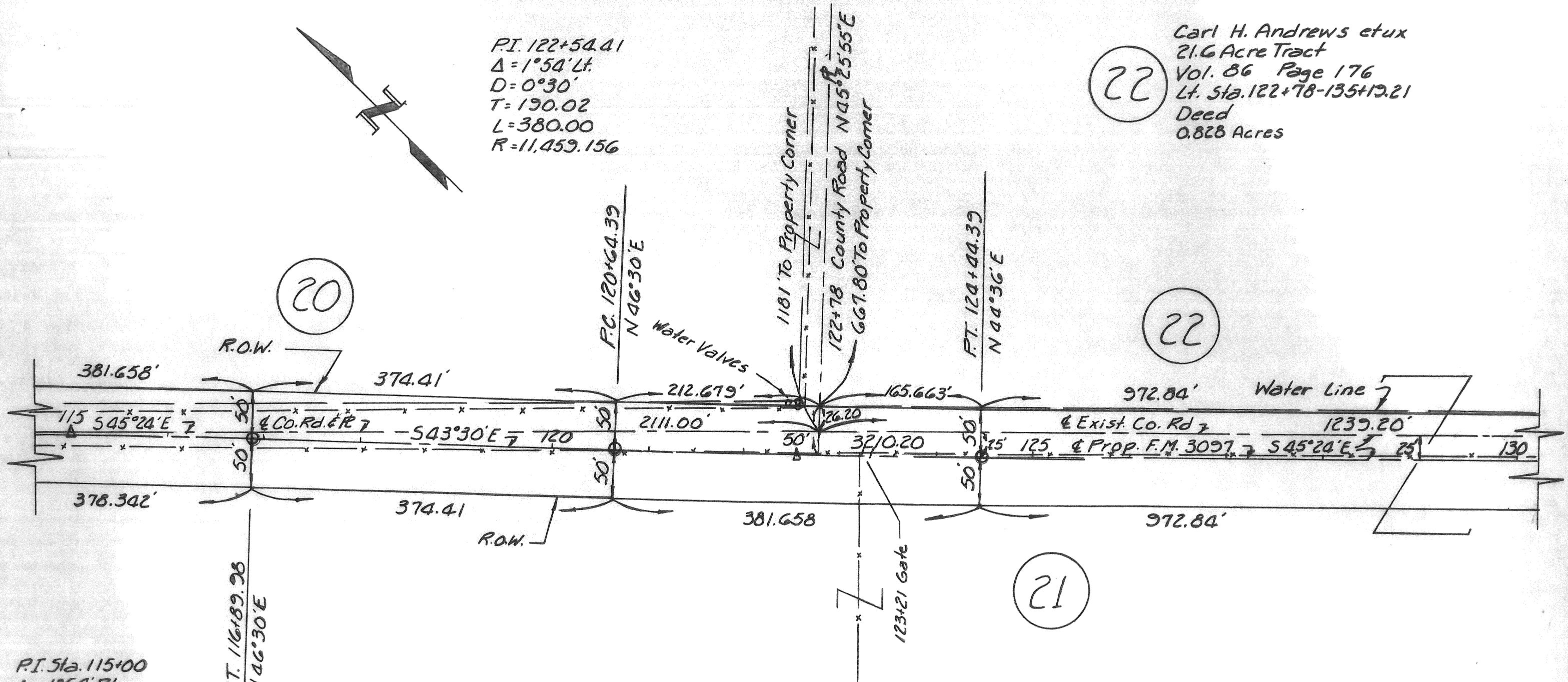
W.W. FORD SURVEY ABSTRACT NO. 80



P.I. 122+54.41
 $\Delta = 1^{\circ}54' Lt.$
 $D = 0^{\circ}30'$
 $T = 130.02$
 $L = 380.00$
 $R = 11,459.156$

22

Carl H. Andrews et ux
 21.6 Acre Tract
 Vol. 86 Page 176
 Lt. Sta. 122+78-135+19.21
 Deed
 0.828 Acres



P.I. Sta. 115+00
 $\Delta = 1^{\circ}54' Rt.$
 $D = 0^{\circ}30'$
 $T = 130.02$
 $L = 380.00'$
 $R = 11,459.156$

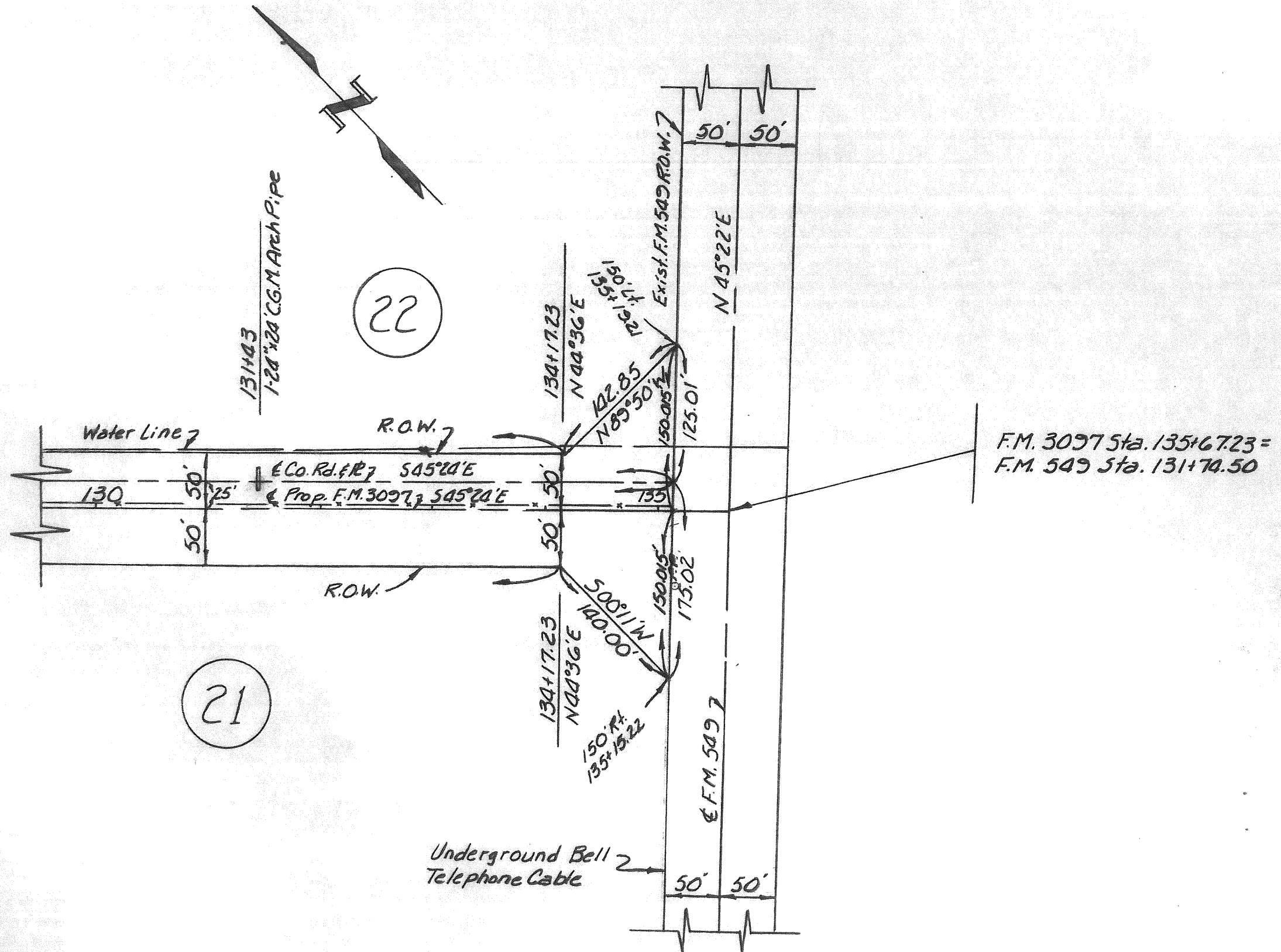
21

Carl H. Andrews et ux
 96.2 Acre Tract
 Vol. 86 Page 174
 Rt. Sta. 103+07-135+17.23
 Deed
 4.735 Acres

21

EDWARD TEAL SURVEY ABSTRACT NO. 207

W. W. FORD SURVEY
ABSTRACT NO. 80



EDWARD TEAL SURVEY
ABSTRACT NO. 207