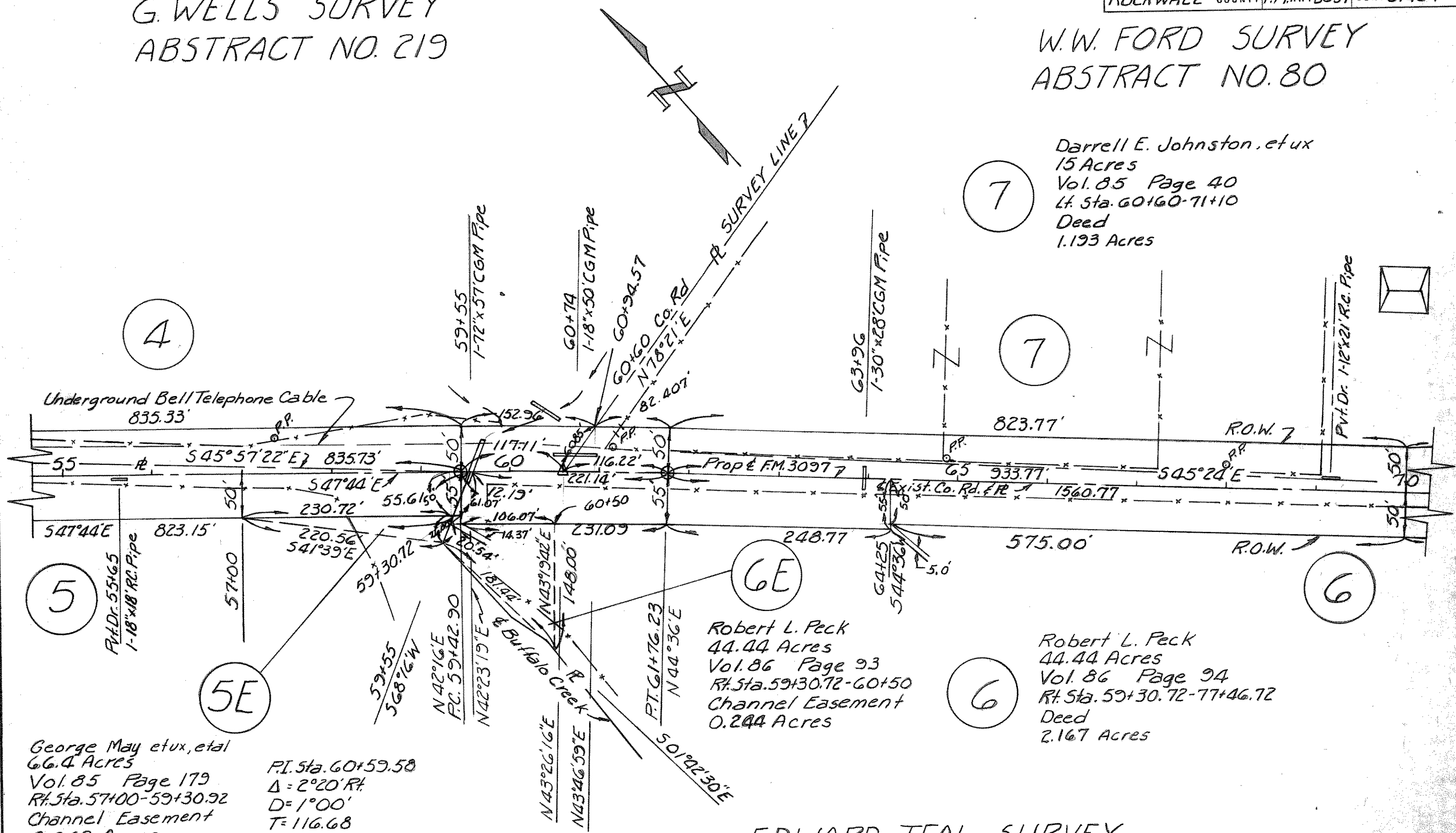


G. WELLS SURVEY  
 ABSTRACT NO. 219

W.W. FORD SURVEY  
 ABSTRACT NO. 80

Darrell E. Johnston, et ux  
 15 Acres  
 Vol. 85 Page 40  
 Lt. Sta. 60+60-71+10  
 Deed  
 1.193 Acres



George May et ux, et al  
 66.4 Acres  
 Vol. 85 Page 179  
 Rt. Sta. 57+00-59+30.92  
 Channel Easement  
 0.062 Acres

PI. Sta. 60+59.58  
 $\Delta = 2^{\circ}20' R$   
 $D = 1^{\circ}00'$   
 $T = 116.68$   
 $L = 233.33$   
 $R = 5723.578$

Robert L. Peck  
 44.44 Acres  
 Vol. 86 Page 93  
 Rt. Sta. 59+30.72-60+50  
 Channel Easement  
 0.244 Acres

Robert L. Peck  
 44.44 Acres  
 Vol. 86 Page 94  
 Rt. Sta. 59+30.72-77+46.72  
 Deed  
 2.167 Acres

EDWARD TEAL SURVEY  
 ABSTRACT NO. 207