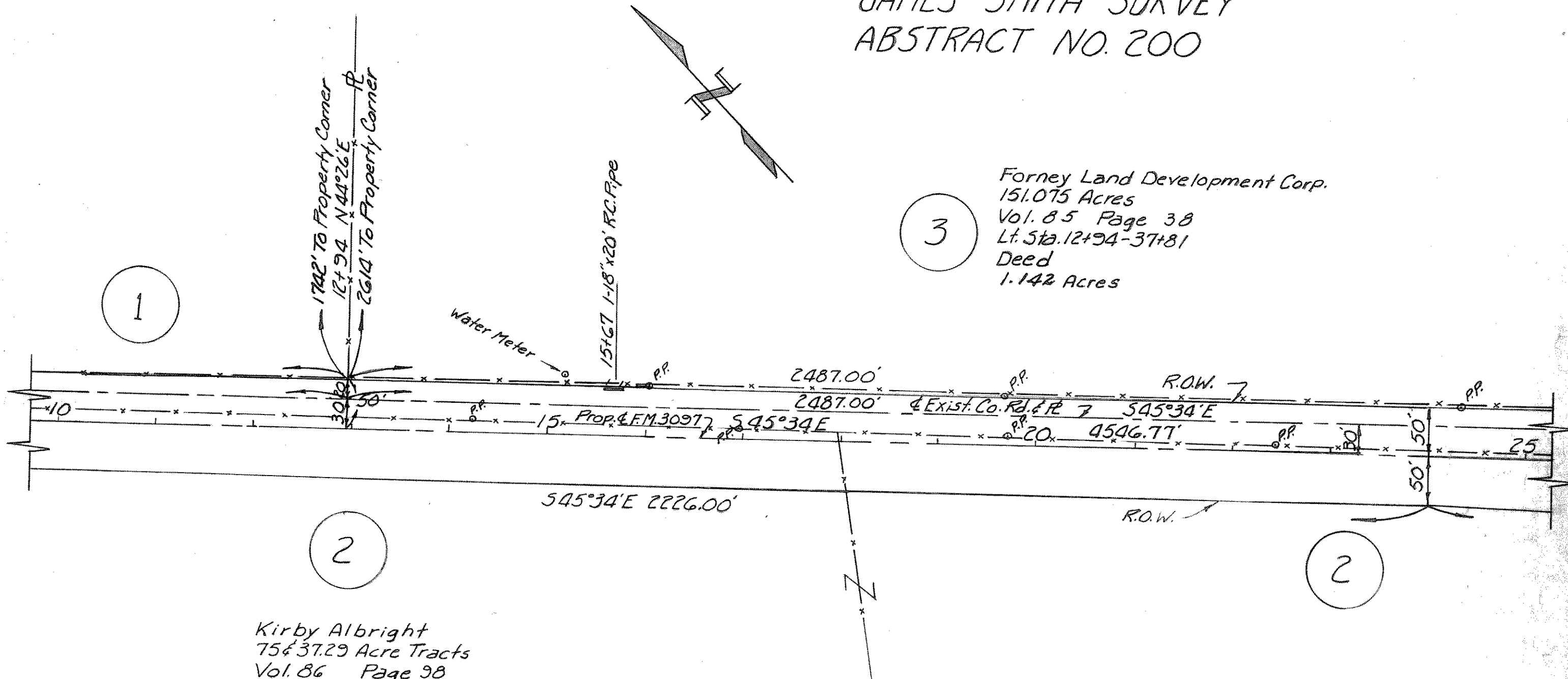


JAMES SMITH SURVEY
 ABSTRACT NO. 200



Kirby Albright
 75 & 37.29 Acre Tracts
 Vol. 86 Page 98
 Rt. Sta. (FM 740 ~ 156+42) - Rt Sta 45+73
 Deed
 3.298 Acres
 Lien Release
 Vol. 86 Page 90

EDWARD TEAL SURVEY
 ABSTRACT NO. 207