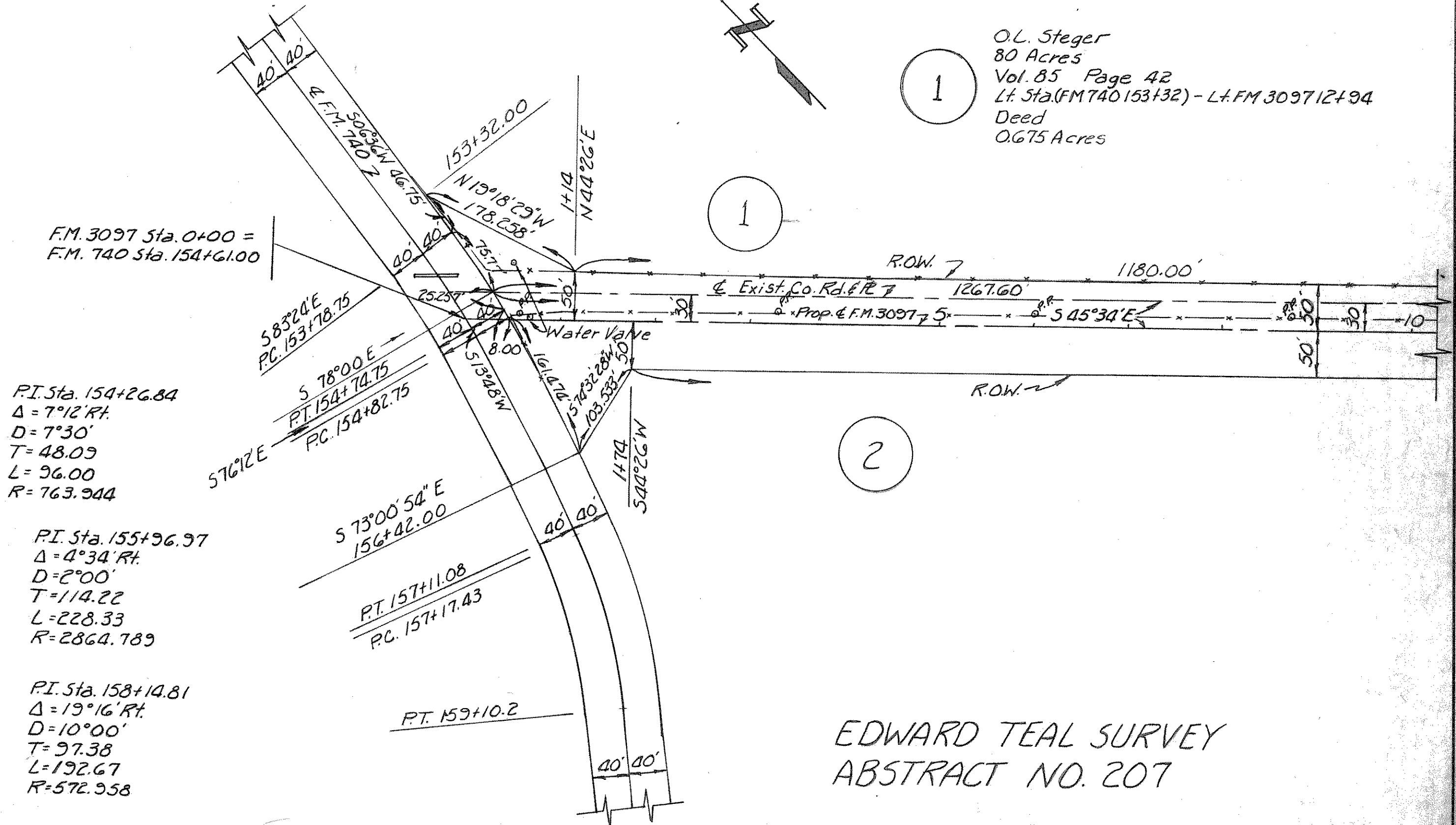


JAMES SMITH SURVEY ABSTRACT NO. 200

1
 O.L. Steger
 80 Acres
 Vol. 85 Page 42
 Lt. Sta. (FM 740 153+32) - Lt. FM 3097 12+94
 Deed
 0.675 Acres



F.M. 3097 Sta. 0+00 =
 F.M. 740 Sta. 154+61.00

PI. Sta. 154+26.84
 $\Delta = 7^{\circ}12' \text{ Rt.}$
 $D = 7^{\circ}30'$
 $T = 48.09$
 $L = 96.00$
 $R = 763.944$

PI. Sta. 155+96.97
 $\Delta = 4^{\circ}34' \text{ Rt.}$
 $D = 2^{\circ}00'$
 $T = 114.22$
 $L = 228.33$
 $R = 2864.789$

PI. Sta. 158+14.81
 $\Delta = 19^{\circ}16' \text{ Rt.}$
 $D = 10^{\circ}00'$
 $T = 97.38$
 $L = 192.67$
 $R = 572.958$

EDWARD TEAL SURVEY ABSTRACT NO. 207