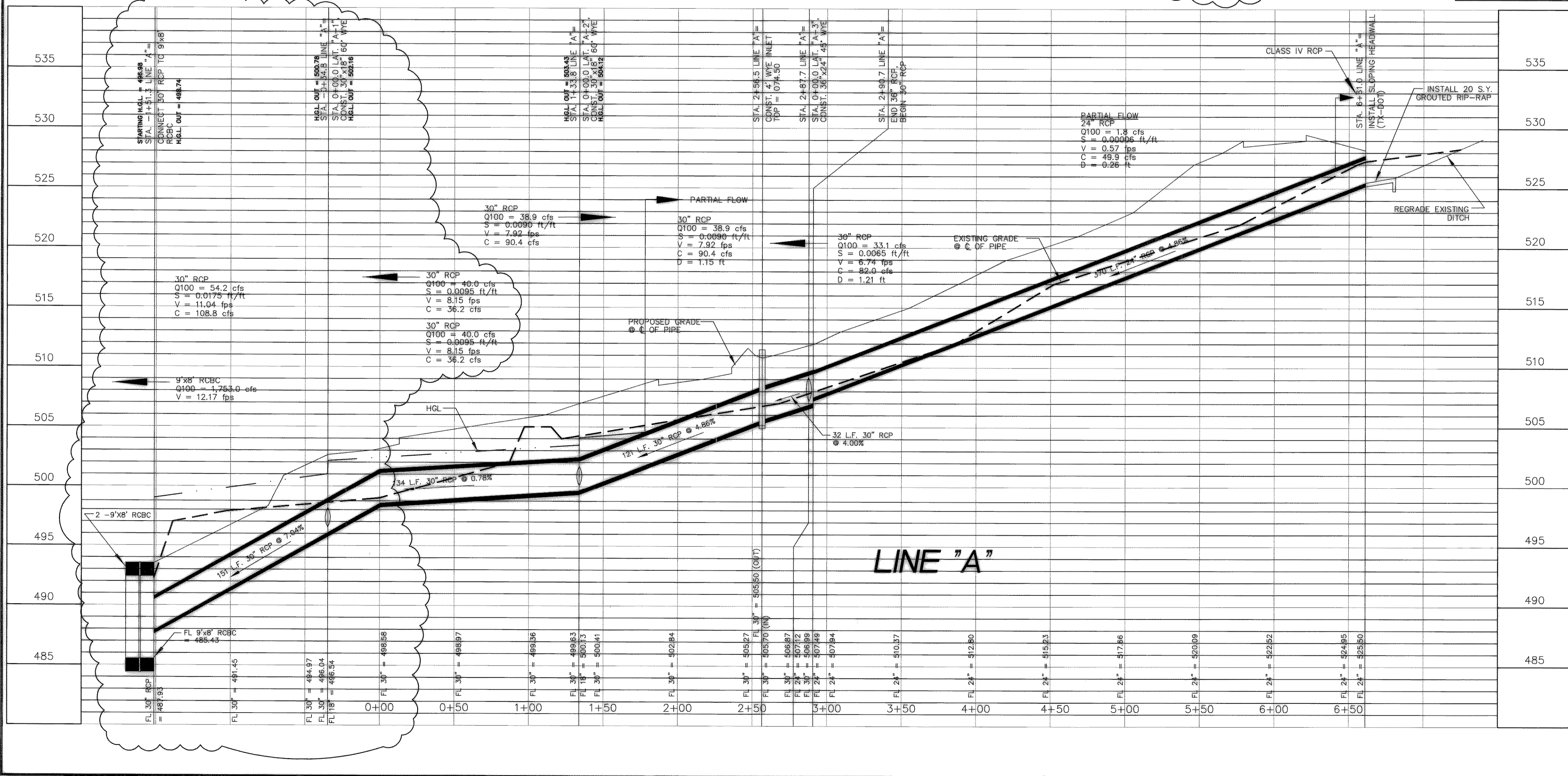
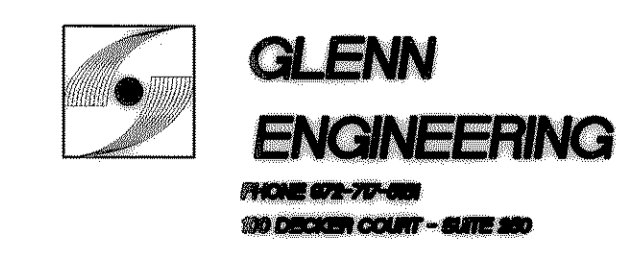


NOTE:
FOR COVER DEPTHS LESS THAN 2', USE CLASS IV RCP

BENCH MARK:
#1
CITY OF ROCKWALL MONUMENT ROAD, 84 NAIL W/SHINER IN POWER POLE, LOCATED IN THE SOUTHWEST QUADRANT OF THE INTERSECTION OF S.H. 205 AND F.M. 552 AND DALTON ROAD APPROXIMATELY 20' SOUTH OF THE CENTERLINE OF DALTON ROAD, AND 133.5' WEST OF THE CENTERLINE OF S.H. 205. ELEVATION = 542.34



STORM SEWER PROFILES
SCALE: H=1" = 40', V=1" = 5'



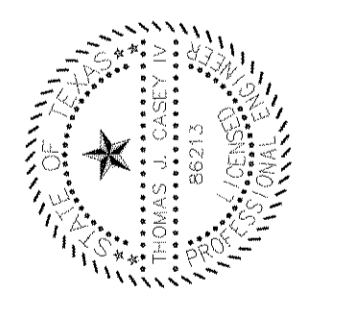
DATE: NOV. 9, 2001
DRAWN BY: TUC
CHECKED: RAH
COM NO: 144101044
REVISED: FEBRUARY 21, 2002

ROCKWALL MIDDLE SCHOOL #4

ROCKWALL INDEPENDENT SCHOOL DISTRICT

ROCKWALL, TEXAS

FINAL PLANS FOR BIDDING AND CONSTRUCTION



SHW Group Inc.
Architects + Engineers

SHEET NUMBER: C
OF: 2.25
SET NUMBER