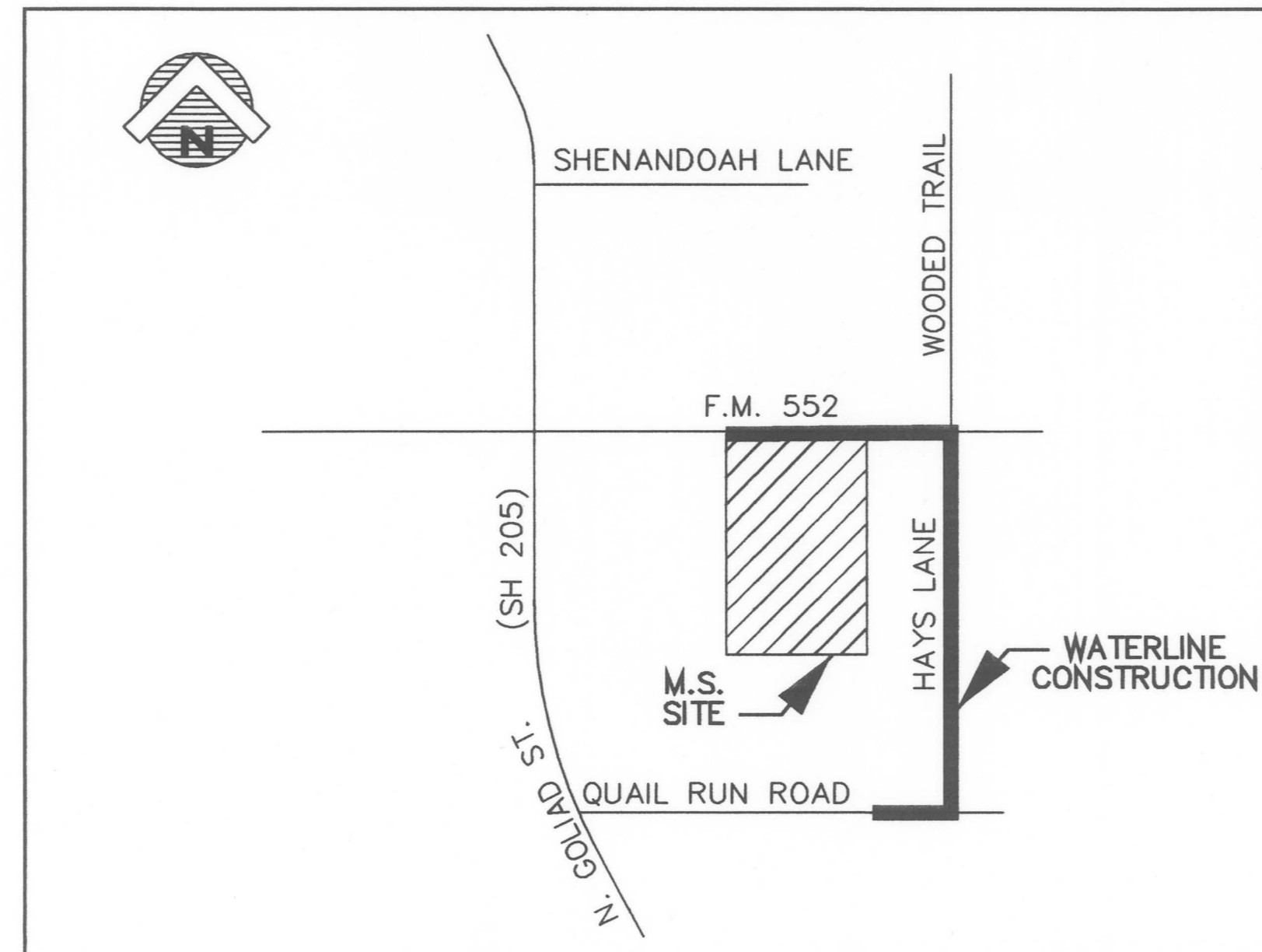


# ENGINEERING PLANS FOR

# 16" & 20" WATER LINE CONSTRUCTION

## ROCKWALL, TEXAS

### LOCATION MAP



**VICINITY MAP**  
NOT TO SCALE

### INDEX OF DRAWINGS

#### GENERAL

G1.01 COVER SHEET

#### CIVIL

- C2.01 QUANTITIES & NOTES SHEET
- C2.02 PLAN & PROFILE LN "A"  
STA 0+00 TO STA. 13+00
- C2.03 PLAN & PROFILE LN "A"  
STA 13+00 TO STA. 26+00
- C2.04 PLAN & PROFILE LN "A"  
STA 26+00 TO STA. 39+00
- C2.05 PLAN & PROFILE LN "A"  
STA 39+00 TO STA. 52+34
- C2.06 PLAN & PROFILE LN "B"  
STA 0+00 TO STA. 4+92
- C2.07 PLAN & PROFILE LN "C"  
STA 0+00 TO STA. 13+25
- C2.08 WATER DETAILS
- C2.09 WATER DETAILS
- C2.10 WATER DETAILS

DATE: SEPTEMBER 12, 2002  
DRAWN BY: TUC  
CHECKED: RAH  
COM NO: 144101044  
REVISED:

**16" & 20" WATER LINE CONSTRUCTION**  
**ROCKWALL INDEPENDENT SCHOOL DISTRICT**  
**ROCKWALL, TEXAS**

FINAL PLANS FOR BIDDING  
AND CONSTRUCTION



OWNER

**ROCKWALL INDEPENDENT SCHOOL DISTRICT**  
801 EAST WASHINGTON STREET  
ROCKWALL, TEXAS 75087  
(972) 771-0605

ARCHITECT

**SHW GROUP, INC.**  
4000 McEWEN ROAD NORTH  
DALLAS, TEXAS 75244  
(972) 701-0700

ENGINEER

**CIVIL ENGINEER**  
**GLENN ENGINEERING**  
100 DECKER COURT, SUITE 250  
IRVING, TEXAS 75062  
(972) 717-5151



PHONE 972-717-5151 FAX 972-719-4229  
100 DECKER COURT - SUITE 250 IRVING, TEXAS 75062

SHEET NUMBER **G**  
OF **1.01**  
SET NUMBER