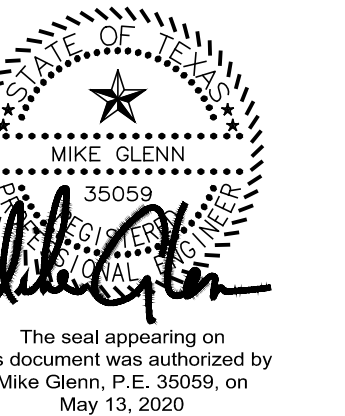




8 - RFI #40	RAH	CMG	2020.05.13
7 - RFI #79 - PC 20 - REV	RAH	CMG	2020.03.13
6 - RFI #116 AND #117	RAH	CMG	2020.01.13
5 - RFI #20 AND #21	RAH	CMG	2019.07.23
4 - RFI #16	RAH	CMG	2019.07.12
3 - CITY COMMENTS	RAH	CMG	2019.04.30
2 - ASI #1 - CITY COMMENTS	RAH	CMG	2019.04.02

Revision	By	Appd	YYYY.MM.DD
100%CD - For Bidding and Construction	RAH	CMG	2019.03.01
Issued	By	Appd	YYYY.MM.DD

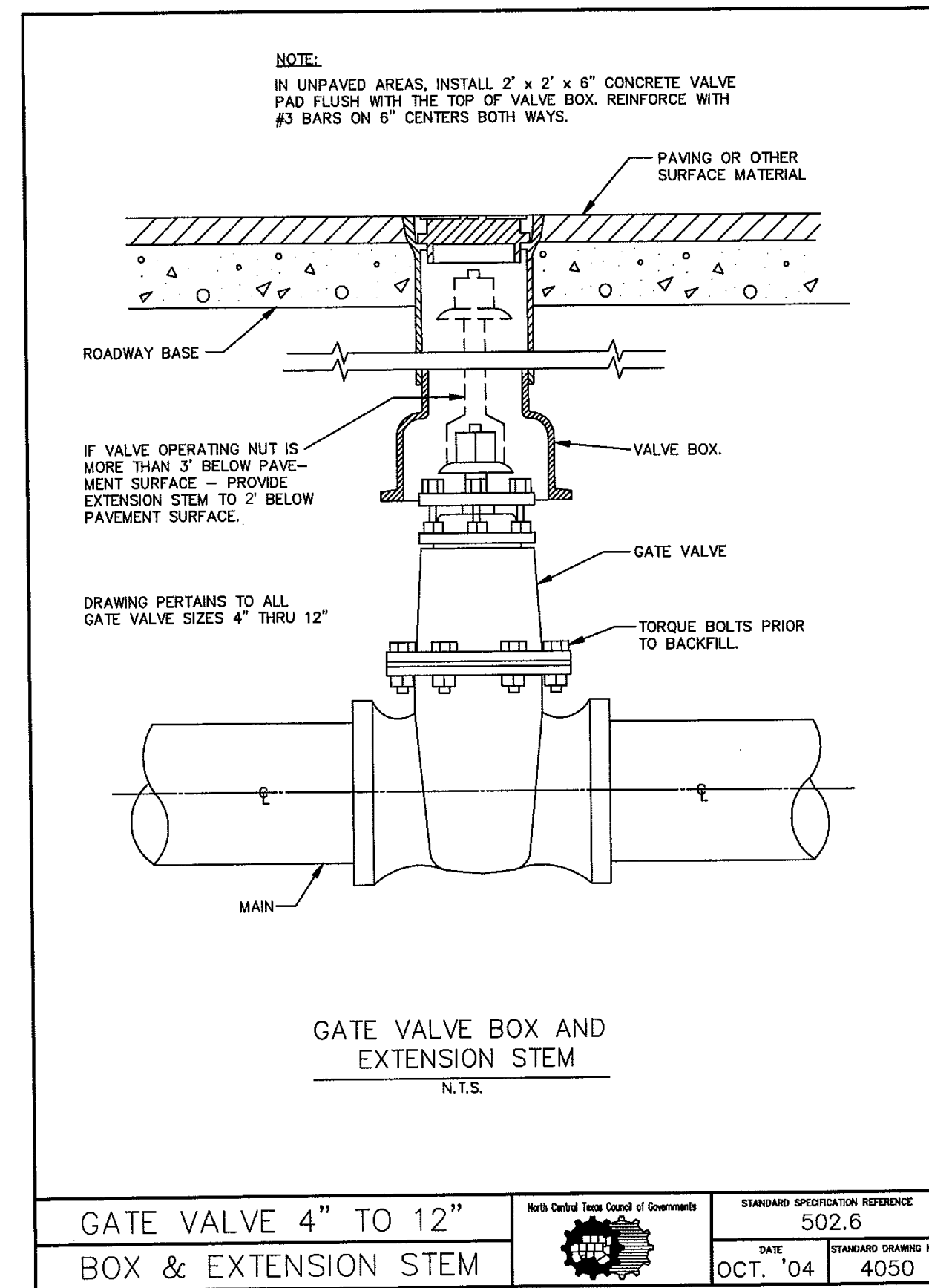


RECORD DRAWING
THIS IS TO CERTIFY THAT CHANGES AND
CORRECTIONS HAVE BEEN MADE TO
CONFORM TO THE CONTRACTOR'S RECORD
OF THIS PROJECT.

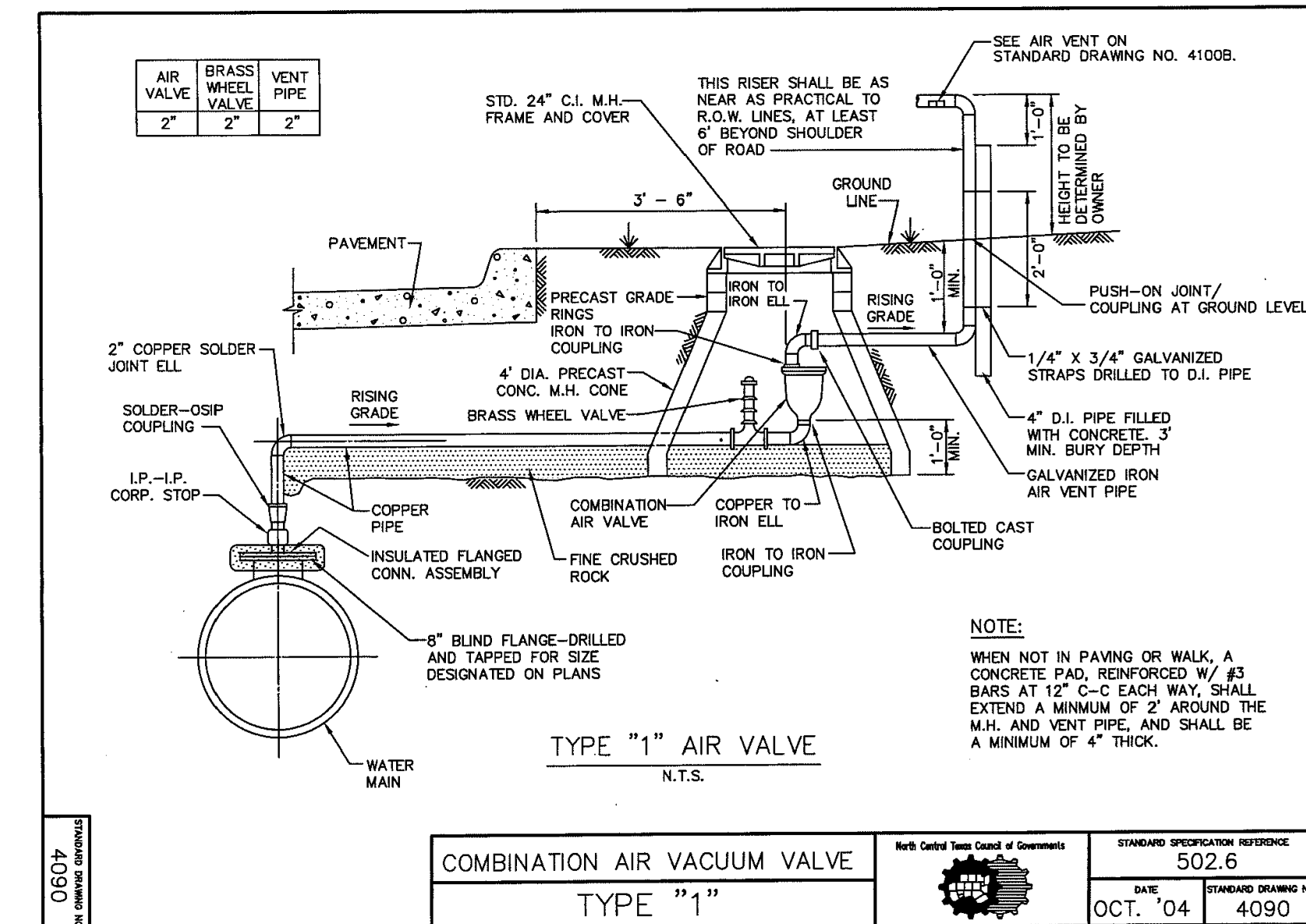
SIGN: *Cheryl Armitage*

DATE: 06/01/2020

Glenn Engineering Corporation

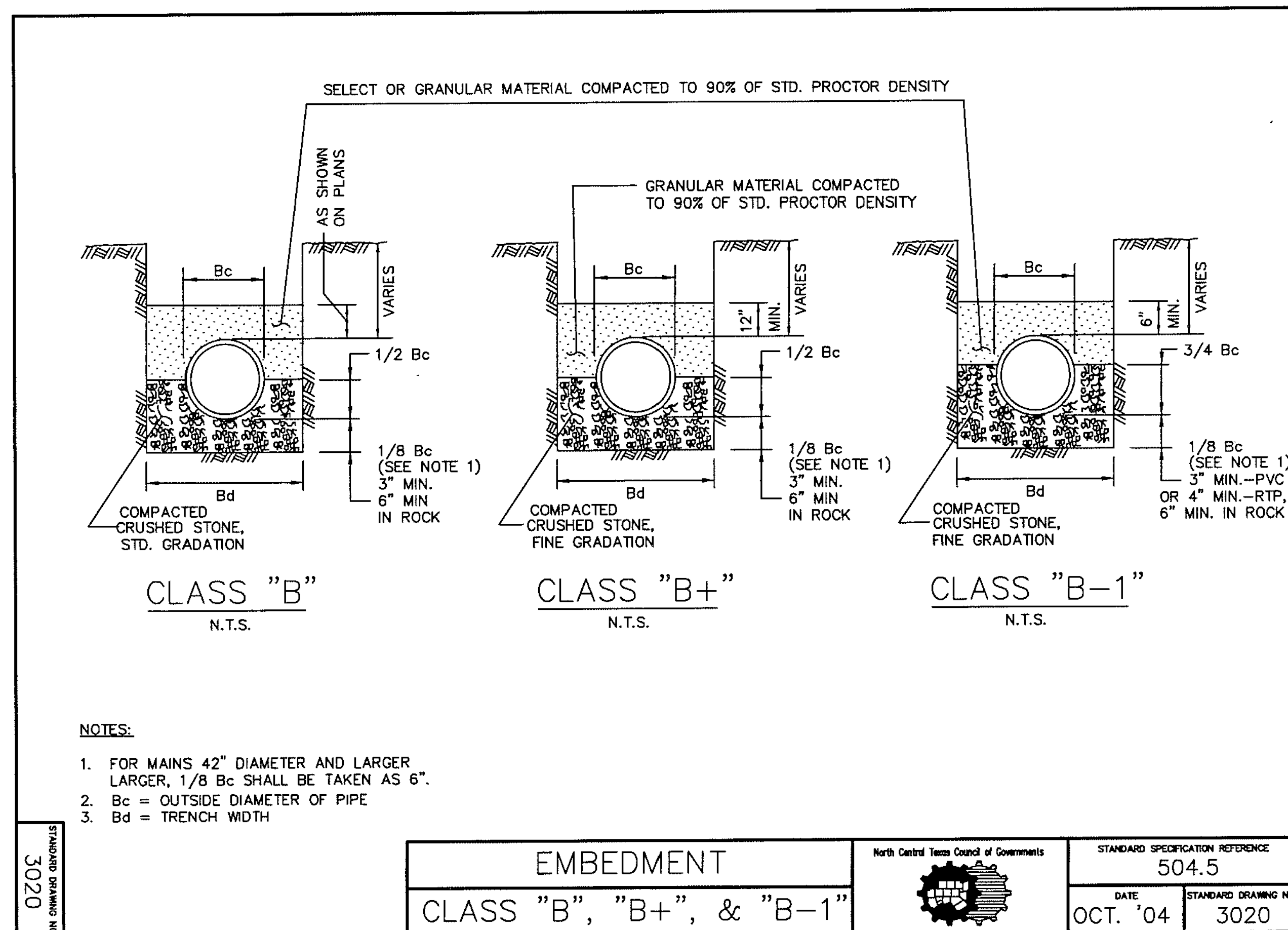


GATE VALVE 4" TO 12" BOX & EXTENSION STEM	North Central Texas Council of Governments	STANDARD SPECIFICATION REFERENCE 502.6
		DATE: OCT. '04 STANDARD DRAWING NO. 4050



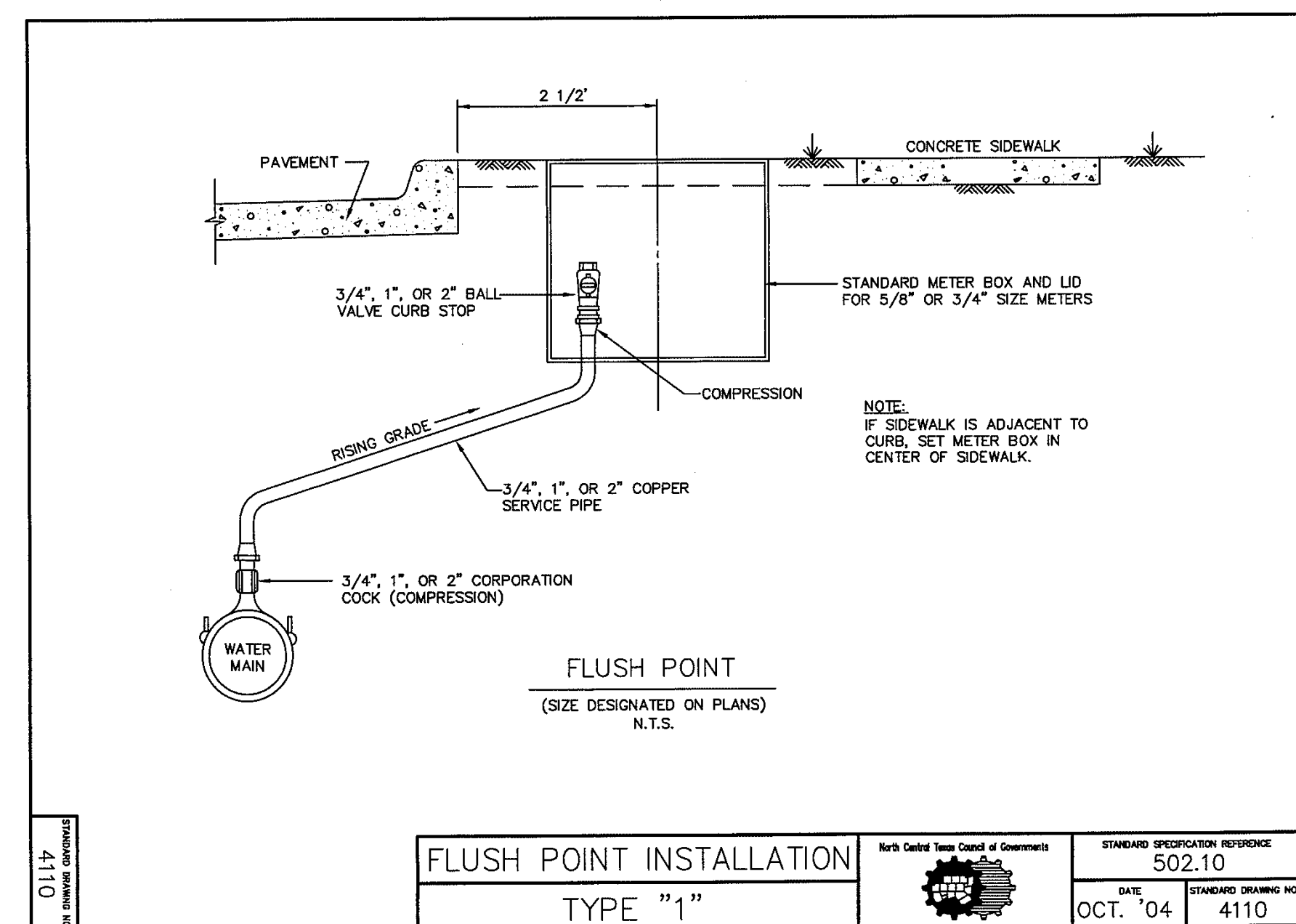
COMBINATION AIR VACUUM VALVE TYPE "1"	North Central Texas Council of Governments	STANDARD SPECIFICATION REFERENCE 502.6
		DATE: OCT. '04 STANDARD DRAWING NO. 4090

- *MODIFICATIONS
1. USE SDR-9, NO COPPER
2. ONE (1) INCH PIPE, USE CC THREAD
3. GREATER THAN ONE (1) INCH PIPE, USE IRON PIPE THREAD



EMBEDMENT CLASS "B", "B+", & "B-1"	North Central Texas Council of Governments	STANDARD SPECIFICATION REFERENCE 504.5
		DATE: OCT. '04 STANDARD DRAWING NO. 3020

- *MODIFICATIONS
1. NO GRANULAR MATERIAL ABOVE ROCK OR STONE REPLACEMENT
2. CLASS "B" EMBEDMENT TO BE USED FOR RCP STORM SEWER PIPE
3. CLASS "B" AND "B-1" - SELECT NON-GRANULAR MATERIAL TO BE COMPACTED TO 95% STANDARD PROCTOR. SELECT NON-GRANULAR MATERIAL ABOVE EMBEDMENT
4. CLASS "B+" - NON-GRANULAR MATERIAL TO BE COMPACTED TO 95% STANDARD PROCTOR



FLUSH POINT INSTALLATION TYPE "1"	North Central Texas Council of Governments	STANDARD SPECIFICATION REFERENCE 502.10
		DATE: OCT. '04 STANDARD DRAWING NO. 4110

- *MODIFICATIONS
1. SERVICE PIPE TO BE SDR 9, NO COPPER

NCTCOG DETAILS HAVE BEEN MODIFIED BY THE CITY OF ROCKWALL. SEE NOTES DESIGNATED *MODIFICATIONS FOR THOSE REVISED.