



8 - RH #40	RAH	CMG	2020.05.13
7 - RH #79 - FC 20 - REV	RAH	CMG	2020.03.13
6 - RH #116 AND #117	RAH	CMG	2020.01.13
5 - RH #20 AND #21	RAH	CMG	2019.07.23
4 - RH #16	RAH	CMG	2019.07.12
3 - CITY COMMENTS	RAH	CMG	2019.04.30
2 - ASI #1 - CITY COMMENTS	RAH	CMG	2019.04.02
Revision	By	Appd	YYYY.MM.DD

100% RCD - For Bidding and Construction	RAH	CMG	2019.03.01
Issued	By	Appd	YYYY.MM.DD



The seal appearing on this document was authorized by Mike Glenn, P.E. 35059, on May 13, 2020

Rockwall ISD

Elementary School #15

2911 Greenway Drive  
Rockwall, TX 75087

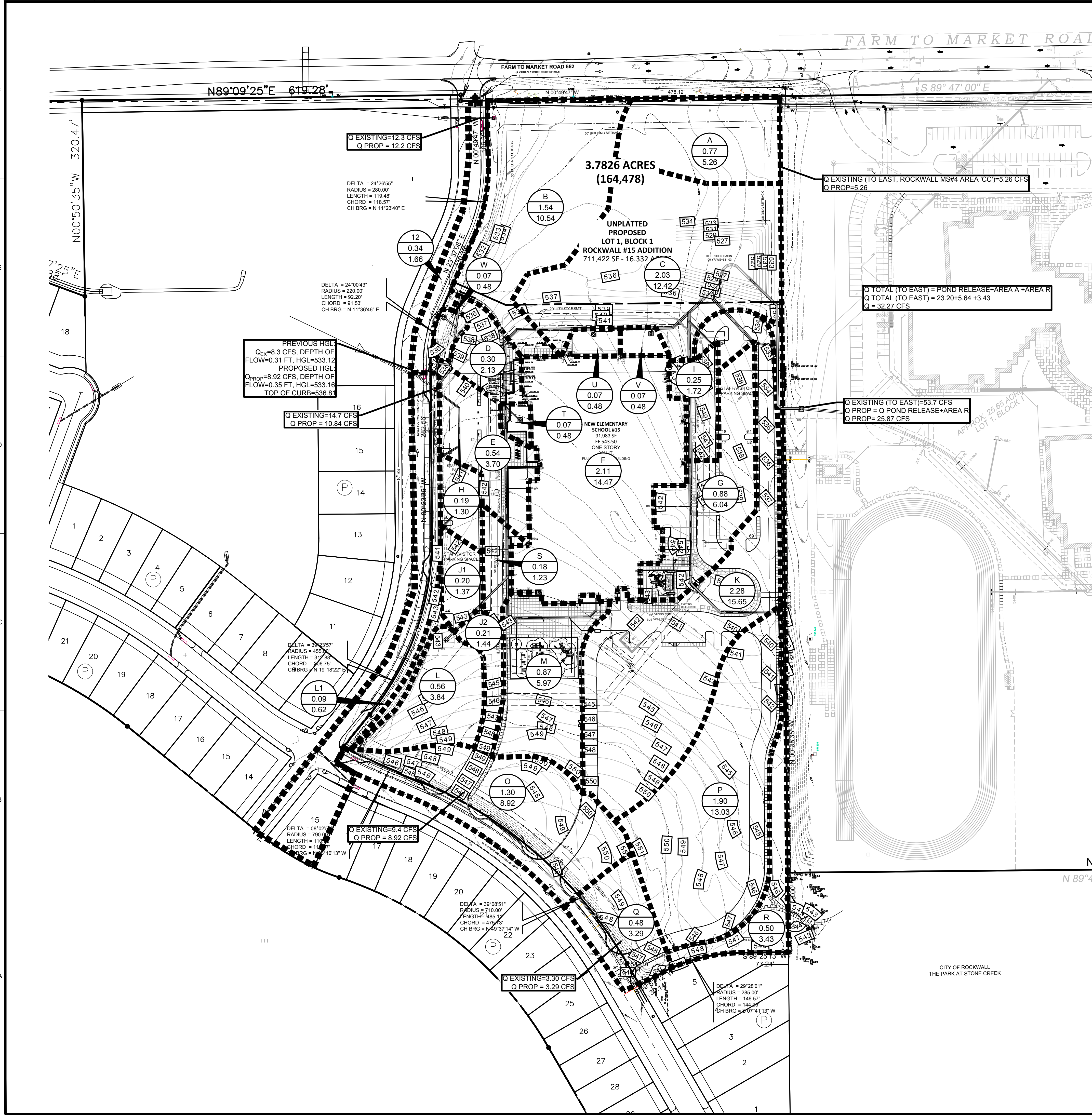
Title **PROPOSED DRAINAGE AREA MAP**

Project No. 214000654 Scale AS SHOWN

Revision Drawing No.

**8** **C**  
**04.10**

AREA NO.	DRAINAGE AREA (Acres)	TIME OF CONCENTRATION (min.)	RUNOFF COEFFICIENT	INTENSITY (in./hr.) (100)	DESIGN FLOW (Q100)	COMMENTS
A	0.77	10	0.70	9.80	5.26	SURFACE TO EAST
B	1.54	10	0.70	9.80	10.54	TO EX AREA INLET @ NW CORNER
C	2.03	10	0.70	9.80	13.93	TO DETENTION POND
D	0.31	10	0.70	9.80	2.13	CI TO EX GREENWAY CULVERT
E	0.54	10	0.70	9.80	3.70	CI TO EX GREENWAY CULVERT
F	2.11	10	0.70	9.80	14.47	ROOF DRAINS TO DETENTION
G	0.88	10	0.70	9.80	6.04	CI TO DETENTION POND
H	0.19	10	0.70	9.80	1.30	CI TO EX GREENWAY CULVERT
I	0.25	10	0.70	9.80	1.72	CI TO DETENTION POND
J1	0.20	10	0.70	9.80	1.37	CI TO EX GREENWAY CULVERT
J2	0.21	10	0.70	9.80	1.44	CI TO DETENTION POND
K	2.28	10	0.70	9.80	15.64	CI TO DETENTION POND
L	0.56	10	0.70	9.80	3.84	AREA INLET TO DETENTION
L1	0.09	10	0.70	9.80	0.62	TO GREENWAY CULVERT
M	0.87	10	0.70	9.80	5.97	AREA INLET TO DETENTION
O	1.30	10	0.70	9.80	8.92	SURFACE TO MOUNTCASTLE
P	1.90	10	0.70	9.80	13.03	CI TO DETENTION POND
Q	0.48	10	0.70	9.80	3.29	SURFACE TO MOUNTCASTLE
R	0.50	10	0.70	9.80	3.43	SURFACE TO EAST
S	0.18	10	0.70	9.80	1.23	CI TO EX GREENWAY CULVERT
T	0.07	10	0.70	9.80	0.48	AREA INLET TO DETENTION
U	0.07	10	0.70	9.80	0.48	AREA INLET TO DETENTION
V	0.07	10	0.70	9.80	0.48	AREA INLET TO DETENTION
W	0.07	10	0.70	9.80	0.48	AREA INLET TO GREENWAY CULV
SUM OF ALL AREAS	17.46				SUM OF ALL AREAS	119.79



Q TOTAL (TO EAST) = POND RELEASE + AREA A + AREA R  
Q TOTAL (TO EAST) = 23.20 + 5.64 + 3.43  
Q = 32.27 CFS

Q EXISTING (TO EAST) = 53.7 CFS  
Q PROP = Q POND RELEASE + AREA R  
Q PROP = 25.87 CFS

PREVIOUS HGL  
Q<sub>EX</sub> = 8.3 CFS, DEPTH OF FLOW = 0.31 FT, HGL = 533.12  
PROPOSED HGL  
Q<sub>PROP</sub> = 8.92 CFS, DEPTH OF FLOW = 0.35 FT, HGL = 533.16  
TOP OF CURB = 536.8'

Q EXISTING = 14.7 CFS  
Q PROP = 10.84 CFS

Q EXISTING = 9.4 CFS  
Q PROP = 8.92 CFS

Q EXISTING = 3.30 CFS  
Q PROP = 3.29 CFS

RECORD DRAWING  
THIS IS TO CERTIFY THAT CHANGES AND CORRECTIONS HAVE BEEN MADE TO CONFORM TO THE CONTRACTOR'S RECORD OF THIS PROJECT.  
SIGN: *Cheryl Ann...*  
DATE: 06/01/2020  
Glenn Engineering Corporation

	DRAINAGE DIVIDE (NEW)
	DRAINAGE AREA (NEW)
	NUMBER OF ACRES (NEW)
	DESIGN FLOW (NEW)
	MAJOR CONTOUR (NEW)
	MINOR CONTOUR (NEW)
	MAJOR CONTOUR (EXISTING)
	MINOR CONTOUR (EXISTING)
	STORM SEWER (NEW)
	STORM SEWER (EXISTING)
	AREA DRAIN (NEW)
	CURB INLET (EXISTING)
	RETAINING WALL (NEW)

TOTAL DISTURBED ACRES  
DISTURBED ACRES: 4.72

Plotted: Jun 1, 2020, 1:53 PM by user: john  
 R:\ROCKWALL\STONE CREEK ELEM\BIBB\SET\STONE CREEK ELEM ENG - RECORD SET.dwg