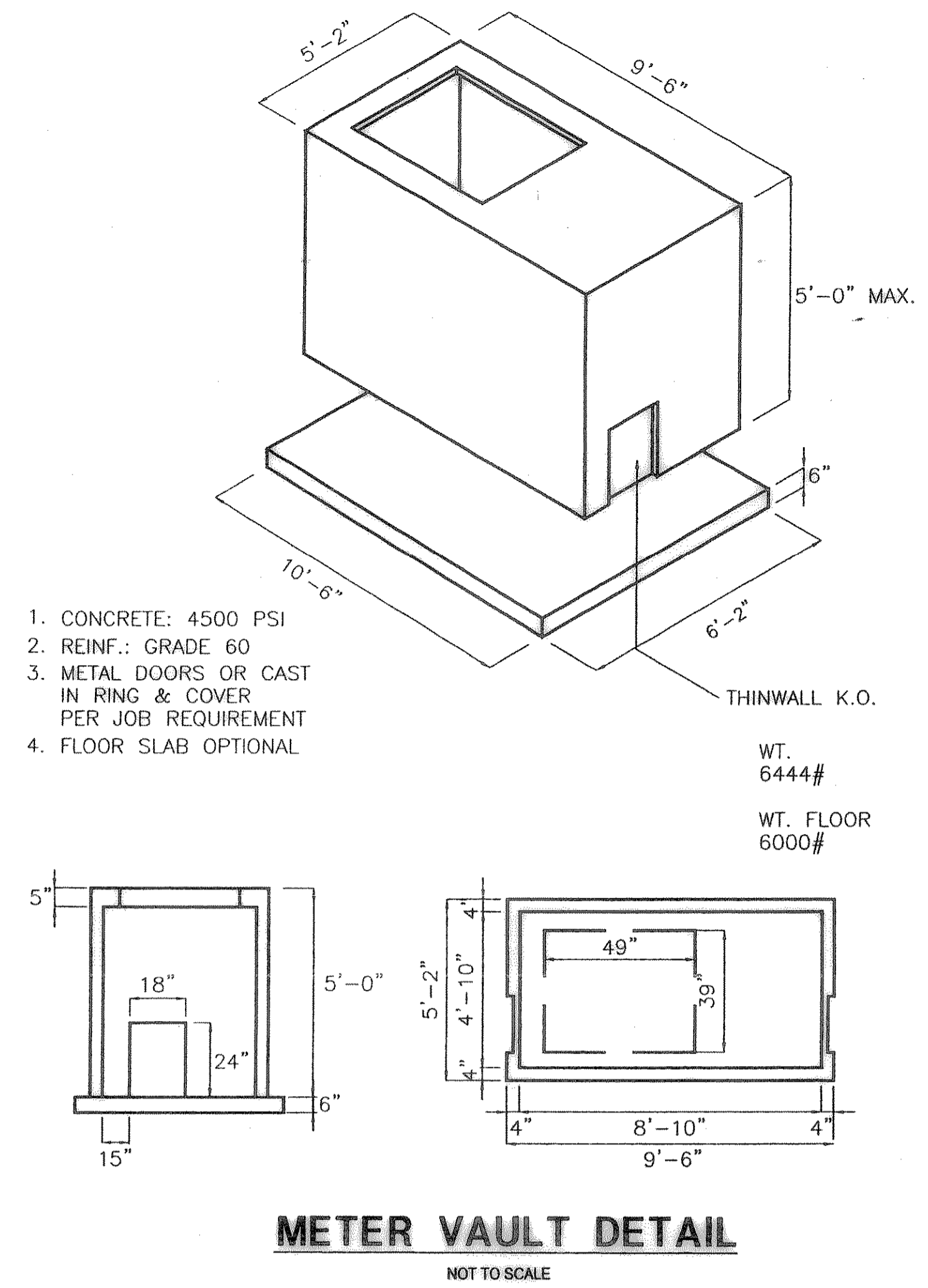
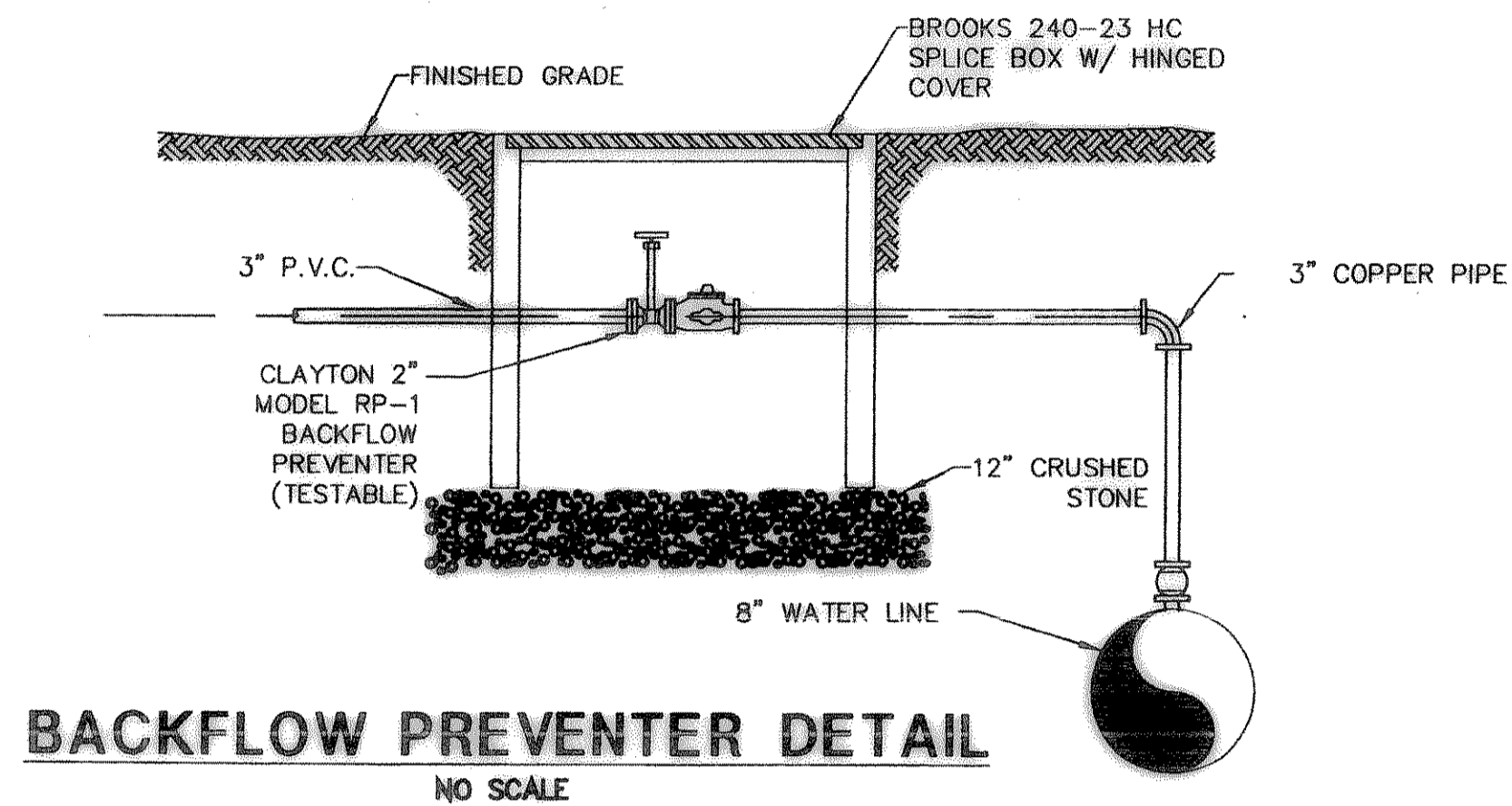


- METER VAULT & BYPASS SPECIFICATIONS
1. NOTIFY THE CONSTRUCTION INSPECTION DEPARTMENT (542-2675) PRIOR TO CONSTRUCTION OF VAULT OR BY-PASS ASSEMBLY.
  2. THE METER VAULT CAN BE EITHER POURED IN PLACE OR PREFABRICATED. IF THE VAULT IS POURED IN PLACE, CONCRETE SHALL BE AT LEAST 6-INCHES THICK AND BE 3000 PSI REINFORCED WITH #4 STEEL BARS ON 12-INCH CENTERS EACH WAY. PREFABRICATED VAULTS SHALL BE AT LEAST 4-INCHES THICK AND 4500 PSI CONCRETE #4 STEEL BARS ON 8-INCH CENTERS.
  3. THE VAULT SHALL NOT BE LOCATED IN ANY DRIVE OR PARKING AREAS AND MUST BE LOCATED IN A UTILITY EASEMENT.
  4. A DRAWING WITH THE EXACT MEASUREMENTS OF THE VAULT SHALL BE GIVEN FOR THE METER AND BY-PASS ASSEMBLY.
  5. THE VAULT LID SHALL BE A BILCO LID, TYPE Q-4 SINGLE LEAF DESIGN. ANGLE FRAME IS 1/4-INCH STEEL WITH STRAP ANCHORS BOLTED TO THE EXTERIOR. THE LEAF IS 1/4-INCH STEEL DIAMOND PATTERN PLATE, PIVOTING ON TORSION BARS FOR EASY OPERATION. THE MINIMUM LIVE LOAD CAPACITY IS 150 LBS. PER SQUARE FOOT. THE SIZE OF THE LID IS 3-FEET BY 3-FEET.
  6. THE LID SHALL BE PAINTED WITH 43-38 TNEMEC DIFFUSED ALUMINUM PAINT OR APPROVED EQUAL.
  7. CONTRACTOR MUST PROVIDE A 2-INCH TEST TAP LOCATED AT LEAST TWO PIPE DIAMETERS DOWNSTREAM OF METER. THE TAP MUST BE MADE USING AN APPROVED SERVICE SADDLE.
  8. THE STRAINER METER AND FLEXIBLE COUPLING SHALL NOT BE SET UNTIL METER VAULT AND TAPS ARE INSPECTED BY THE CITY OF MCKINNEY CONSTRUCTION INSPECTION DEPARTMENT.
  9. THE GATE VALVES ARE REQUIRED TO BE MUELLER A-2370-6 FLANGED RESILIENT SEAT GATE VALVES.
  10. THE BOTTOM OF THE METER VAULT MUST BE 6-INCHES THICK CONCRETE WITH #4 REBAR ON 12-INCH CENTERS AND HAVE A 4-INCH FILL SAND CUSHION UNDERNEATH. A SUMP 4-INCHES DEEP AND 12-INCHES IN DIAMETER SHALL BE INSTALLED TO ONE SIDE OF THE CENTER OF THE BOTTOM SLAB. IF PRECAST VAULT IS USED WHERE SIDES JOIN THE BOTTOM, A LAYER RAMMEK SHALL BE USED TO SEAL THE JOINT.
  11. CONTRACTOR SHALL HAVE A CHOICE OF EITHER HAVING A LINK SEAL WALL SLEEVE MODEL WS-8-32-S-6 FOR A 4-INCH PIPE, WS-1038-S-6 FOR WS-12-37-S-6 FOR 8-INCH PIPE CAST IN THE VAULT FOR HAVE THE VAULT WALL CORED BEFORE INSTALLATION OF VAULT AND PIPING IN EITHER CASE. A LINK SEAL, MODEL NO. LS-400-C MUST BE USED TO SEAL THE ANNULAR SPACE BETWEEN THE PIPE AND WALL OPENING. BREAKING OF THE WALL WITH A JACKHAMMER IS NOT PERMITTED.
  12. THERE SHALL BE A CONCRETE SUPPORT UNDER EACH VALVE.
  13. DEPTH OF VAULT SHALL BE A MINIMUM OF 4-1/2 FEET.



1. CONCRETE: 4500 PSI
2. REINF.: GRADE 60
3. METAL DOORS OR CAST IN RING & COVER PER JOB REQUIREMENT
4. FLOOR SLAB OPTIONAL

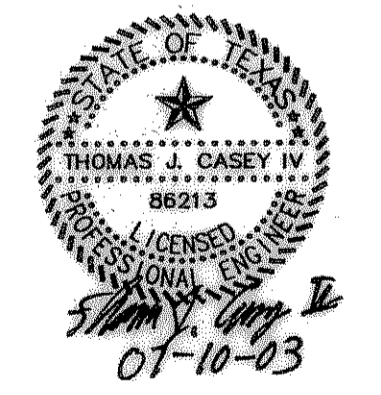
WT. 6444#  
WT. FLOOR 6000#

UTILITY DETAILS  
AS SHOWN

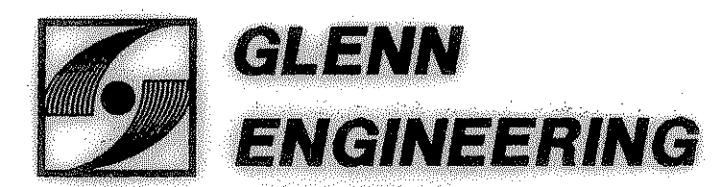
DATE: May 8, 2003  
DRAWN BY: TJC  
CHECKED: TJC  
CADD NO: 14-102110  
REVISED: May 23, 2003

**SPRINGER ELEMENTARY SCHOOL  
ROCKWALL INDEPENDENT SCHOOL DISTRICT  
ROCKWALL, TEXAS**

FINAL PLANS FOR BIDDING  
AND CONSTRUCTION



These Drawings have been modified to conform to the Construction Records.  
Glenn Engineering Corporation  
By: *[Signature]* Date: 11-15-04



PHONE 972-777-9351 FAX 972-777-2078  
100 DECKER COURT - SUITE 910 IRVING, TEXAS 75038



SHEET NUMBER C  
2.26

OF SET NUMBER

© 2003 SHW Group, Inc.