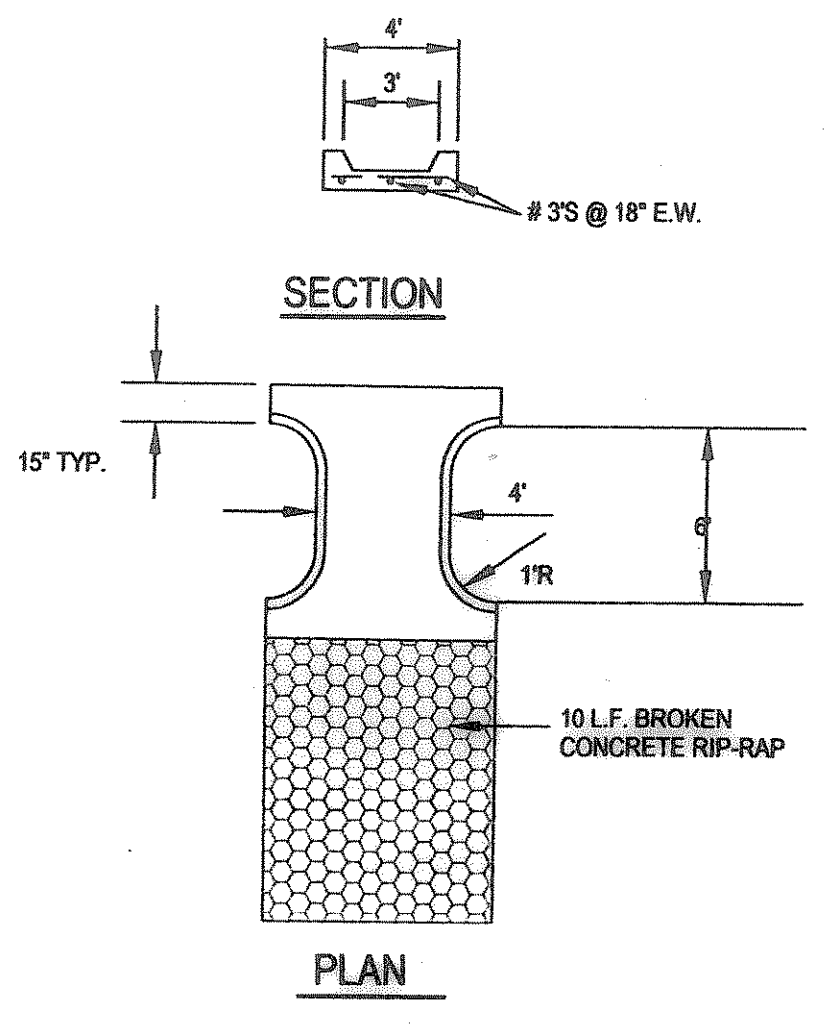
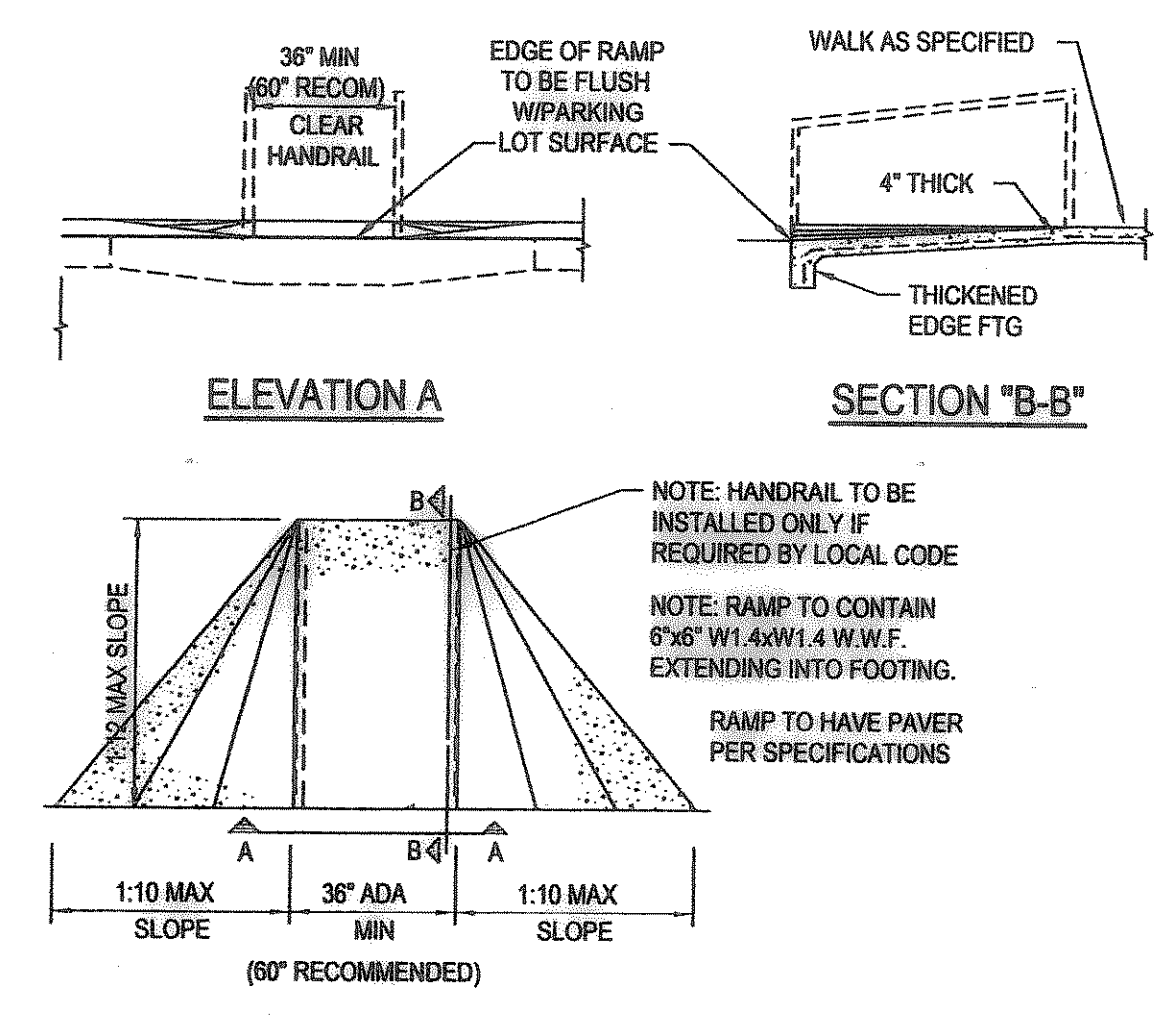


ACCESSIBLE PARKING STALL DETAILS
NOT TO SCALE

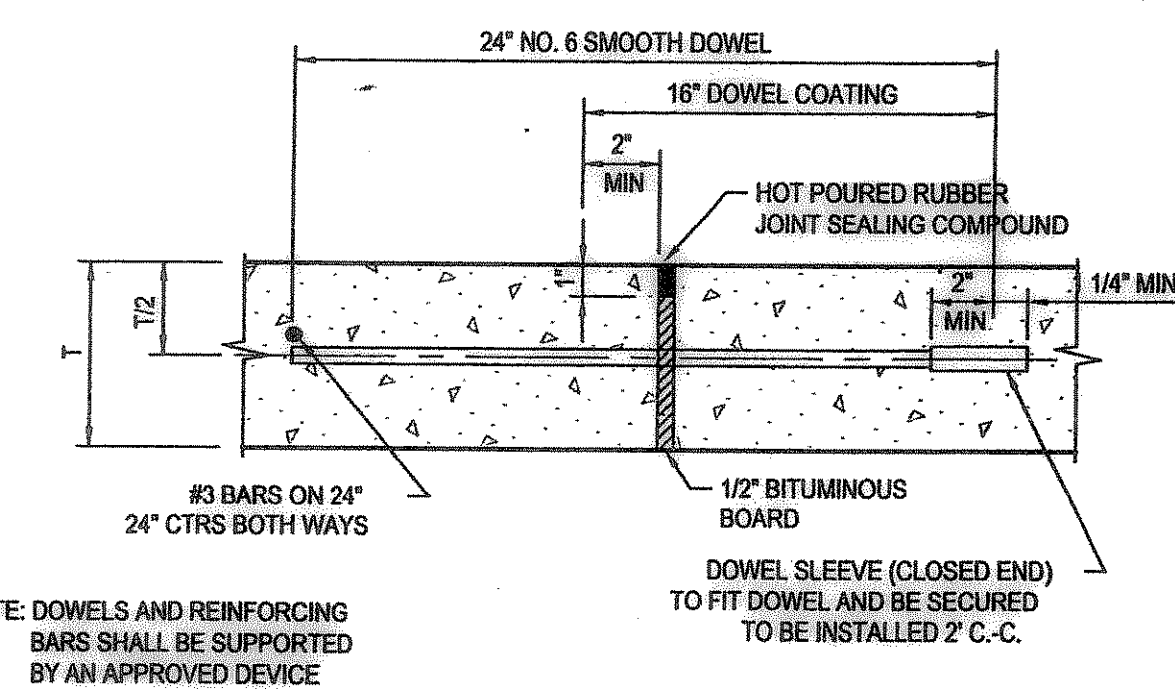


FLUME DETAIL
NOT TO SCALE

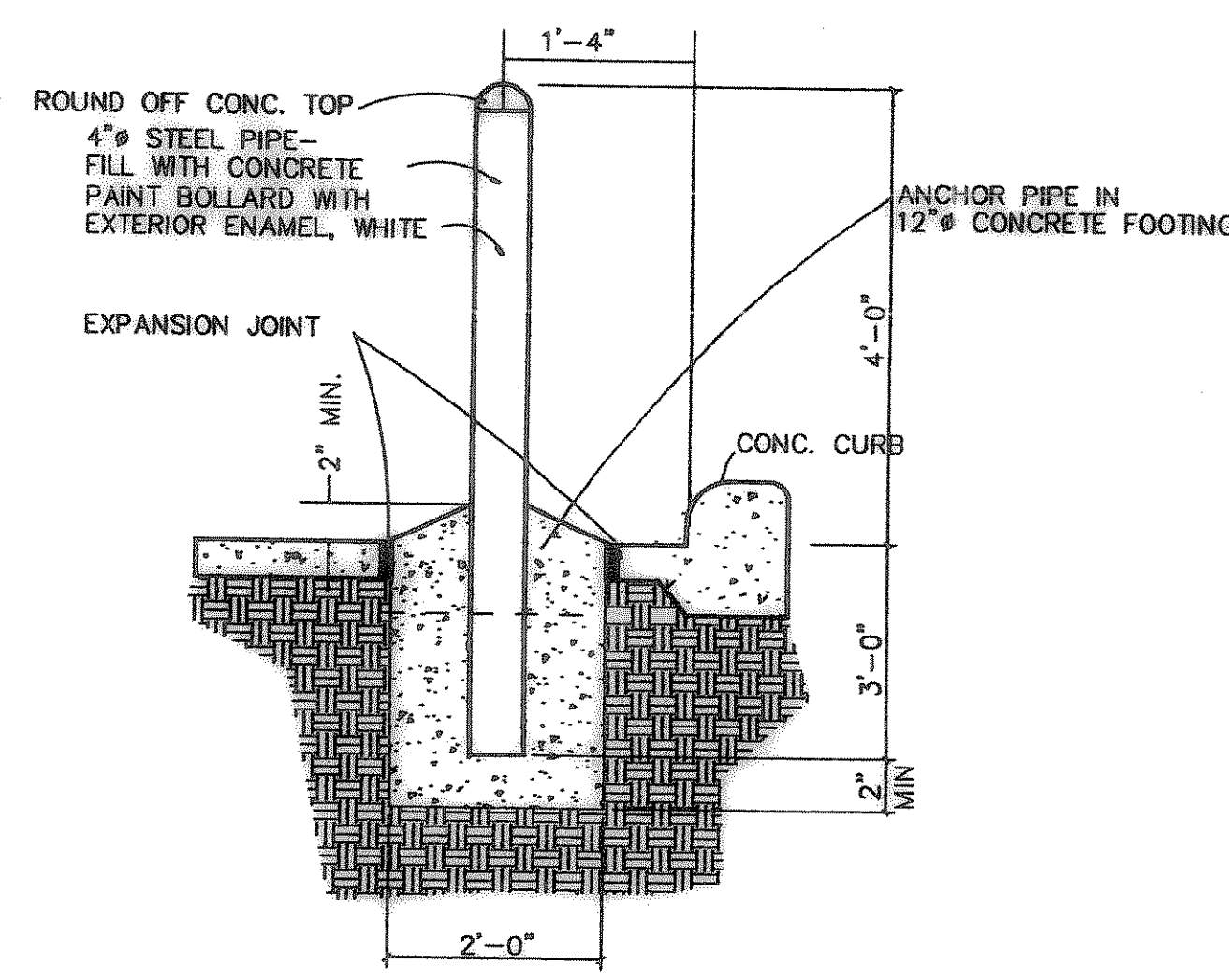


CONCRETE RAMP-INTERNAL
SCALE: 1/4"=1'-0"

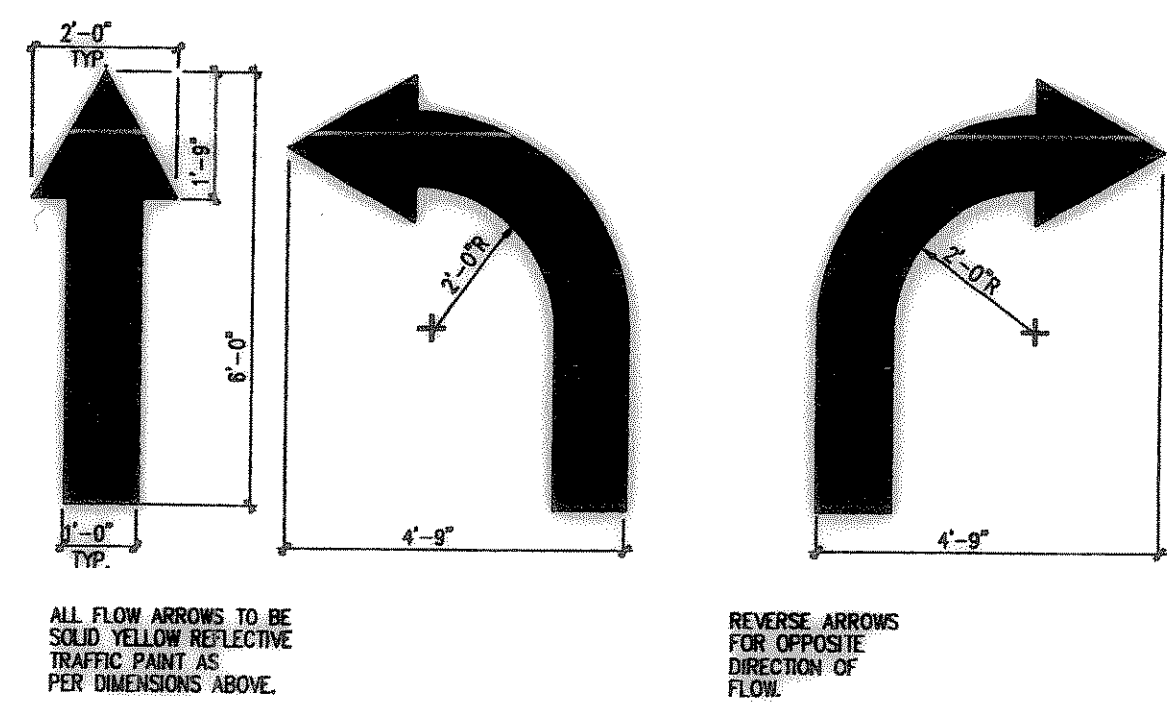
PAVING NOTES
THE INITIAL SOIL TEST AND REPORT PREPARED BY FUGRO-SOUTH, INC. REPORT NO. 0703-1081 AND ANY AND ALL SUBSEQUENT REPORTS PREPARED FOR THIS PROJECT BY FUGRO-McCELLAND OR BY OTHER FIRM, AGENCY OR ENTITY, EVEN THOUGH NO SPECIFIC REFERENCE TO ANY SUCH REPORTS ARE CONTAINED IN THE PLANS AND/OR SPECIFICATIONS FOR THIS PROJECT, ARE MADE A PART OF THIS SITE PLAN. A COPY CAN BE OBTAINED THROUGH THE ARCHITECT OR ENGINEER.



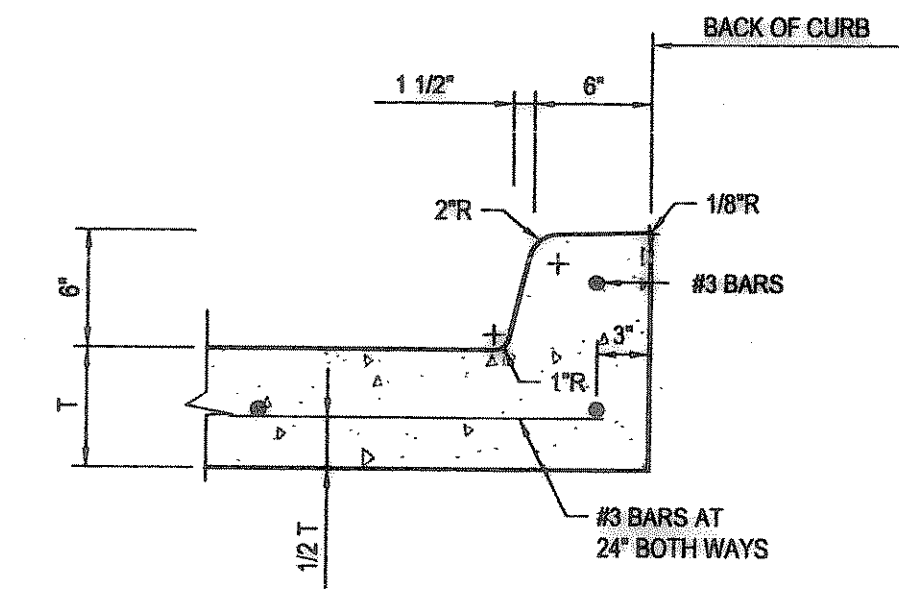
EXPANSION JOINT DETAIL
NTS MAXIMUM SPACING = 150 FEET



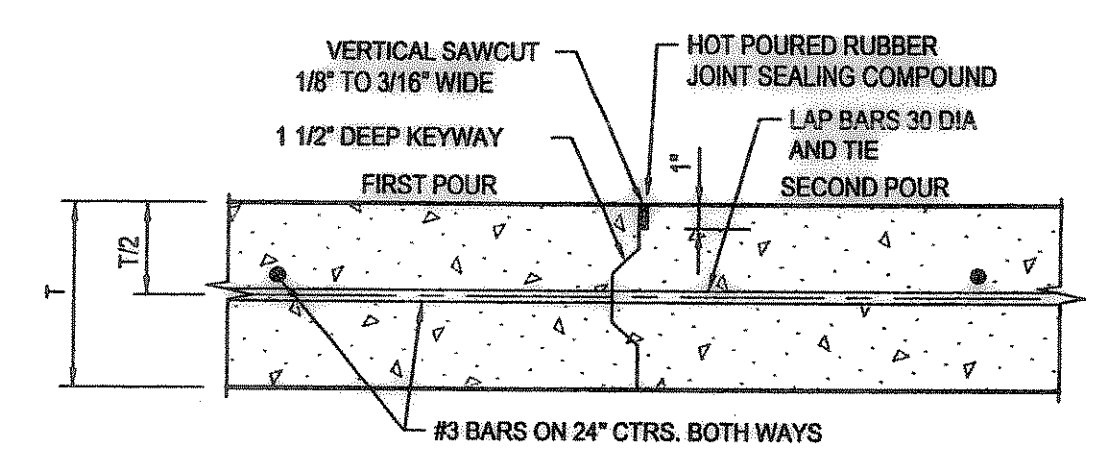
STEEL PIPE BOLLARD DETAIL
NOT TO SCALE



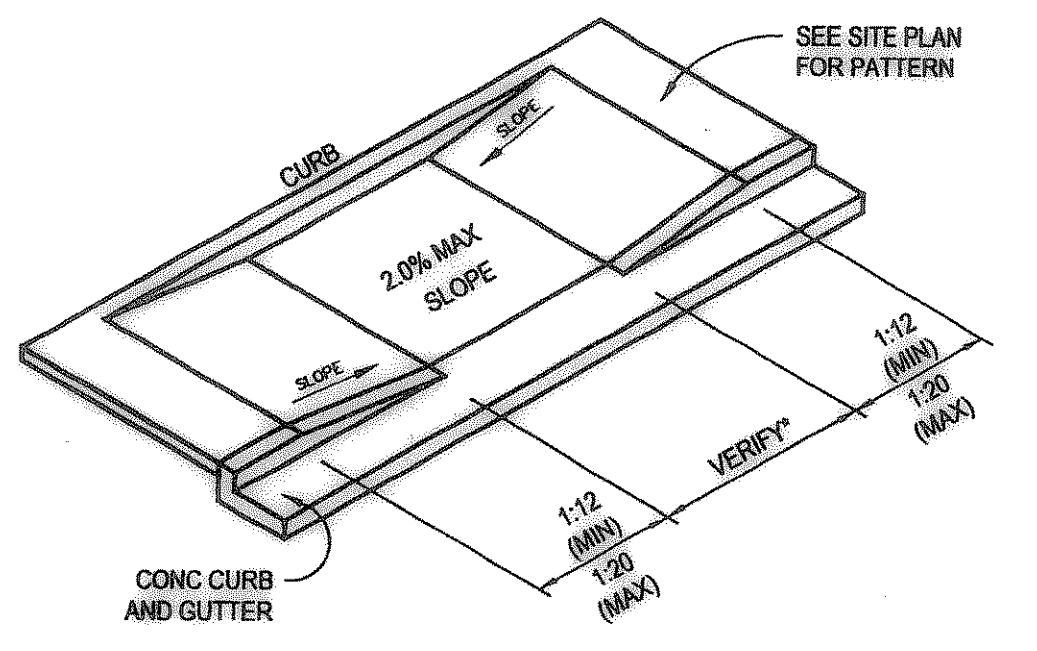
PAINTED TRAFFIC ARROWS
NOT TO SCALE



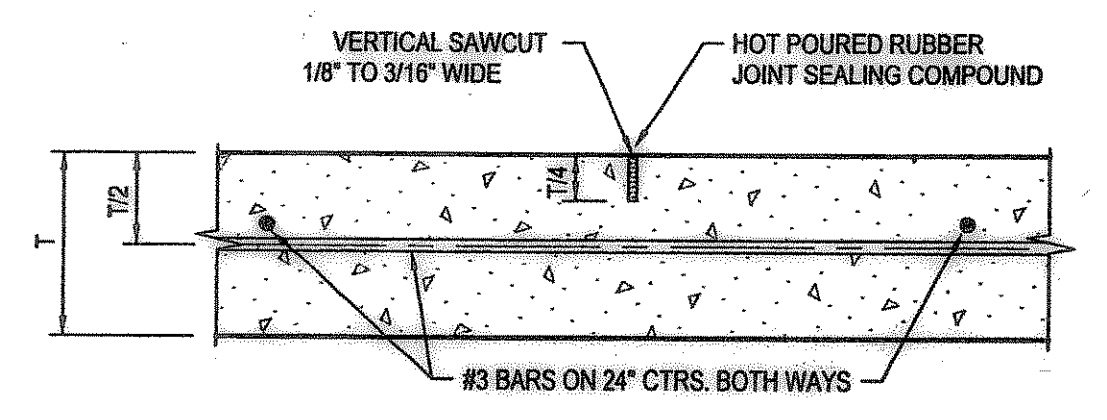
INTEGRAL CURB & GUTTER
NTS



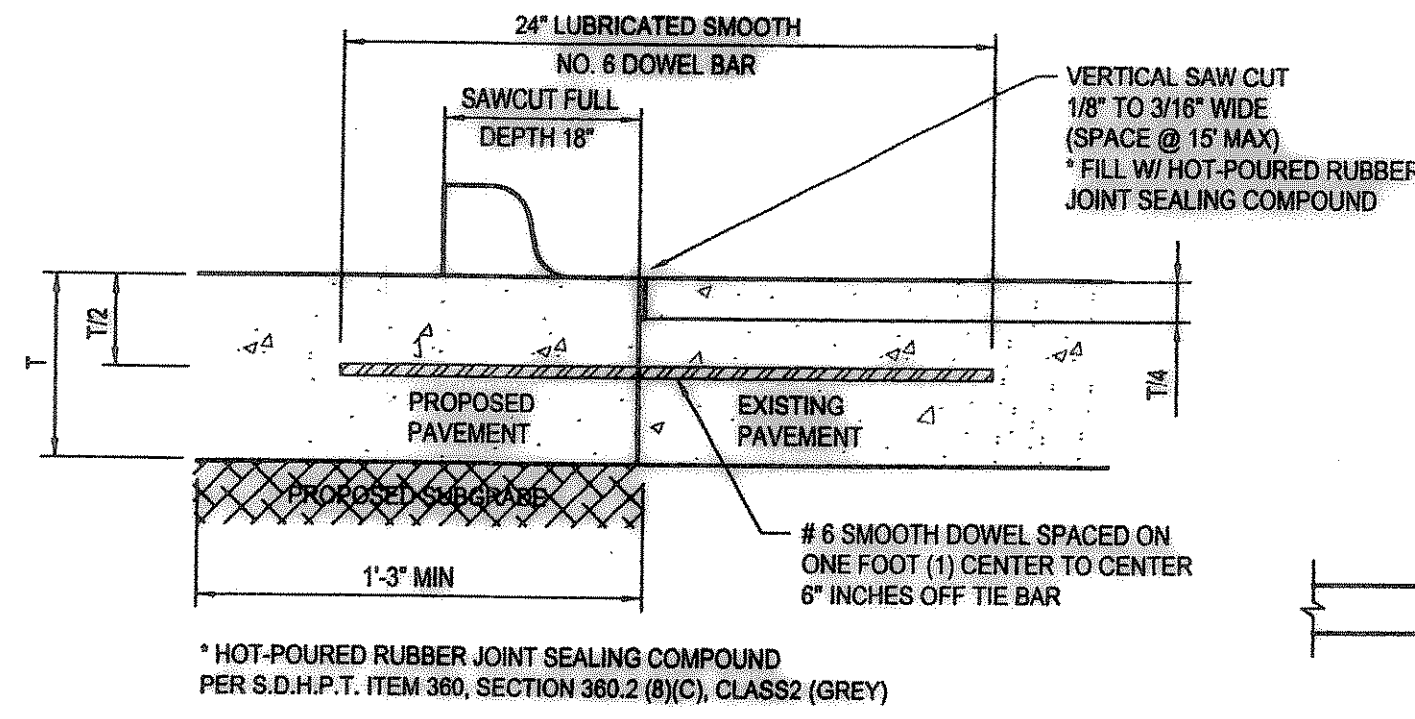
CONSTRUCTION JOINT DETAIL (L)
NTS



HANDICAP RAMP DETAIL
NTS



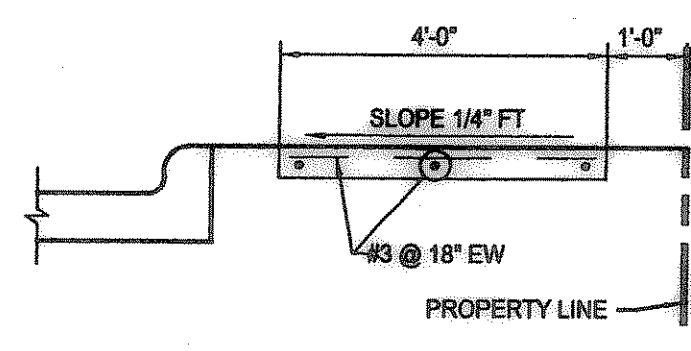
SAWED DUMMY JOINT DETAIL (T)
NTS MAXIMUM SPACING = 15 FEET



TO BE USED WHERE PROPOSED CONCRETE PAVEMENT MEETS EXISTING CONCRETE PAVEMENT

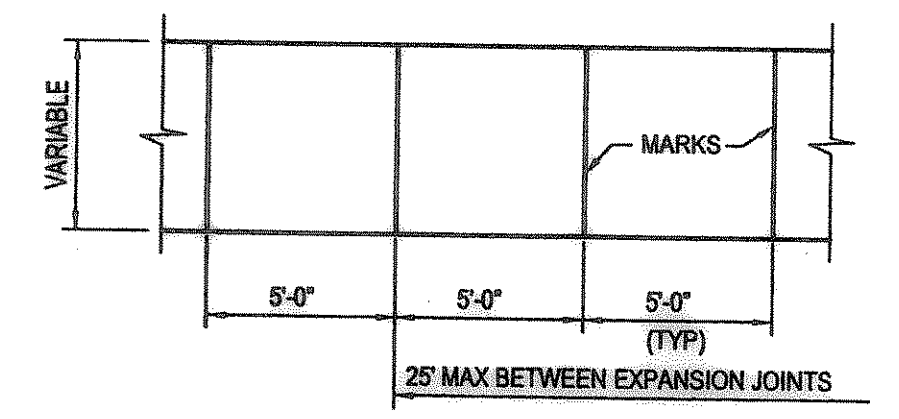
- NOTES:
- NO. 5 SMOOTH DOWEL BAR MAY BE USED IN 5", 6" AND 7" PAVEMENT THICKNESS.
 - LONGITUDINAL BUTT CONSTRUCTION MAY BE UTILIZED IN PLACE OF LONGITUDINAL HINGED (KEYWAY) JOINT AT CONTRACTOR'S OPTION.
 - DOWEL BARS SHALL BE DRILLED INTO PAVEMENT HORIZONTALLY BY USE OF A MECHANICAL RIG. DRILLING BY HAND IS NOT APPLICABLE. PUSHING DOWEL BARS INTO GREEN CONCRETE IS NOT ACCEPTABLE.

LONGITUDINAL BUTT DETAIL
NTS



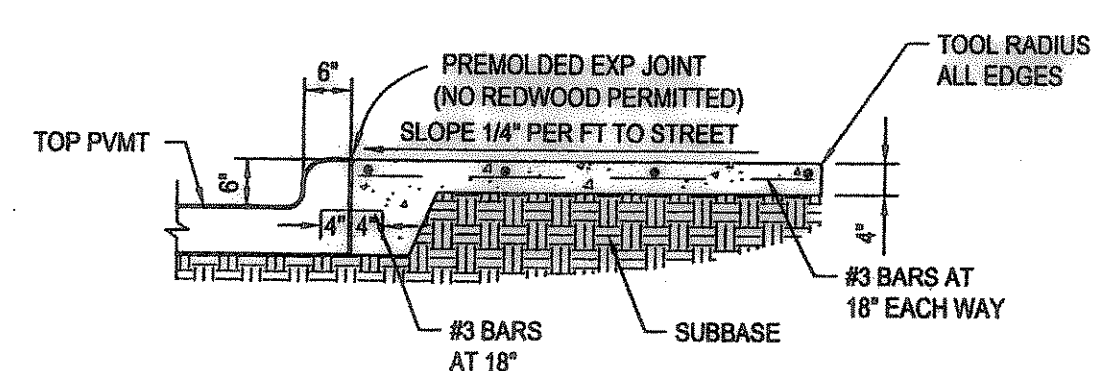
WALK/BUILDING/CURB INTERFACE
NTS

NOTE: NO SAND WILL BE PERMITTED UNDER PAVEMENT.



SIDEWALK PLAN
NTS

- NOTES:
- AT MARKINGS THE CONCRETE SHALL BE A TOOLED JOINT 3/4" DEEP, FOLLOWED BY GROOVING TOOL. STRENGTH SHALL BE 3000 p.s.i. WITH #3 BARS @ 24" O.C.
 - SIDEWALKS ADJACENT TO BUILDING TO BE PLACED ON LIME TREATED SUBGRADE THE SAME AS PAVING ALL OTHER SIDEWALKS TO BE PLACED OVER 2" COMPACTED SAND. (P1 < 15)



INTERIOR SIDEWALK TYPICAL SECTION
NTS

PRIVATE PAVING DETAILS

These Drawings have been modified to conform to the Construction Records.
Glenn Engineering Corporation
By *[Signature]* Date: 10-15-04

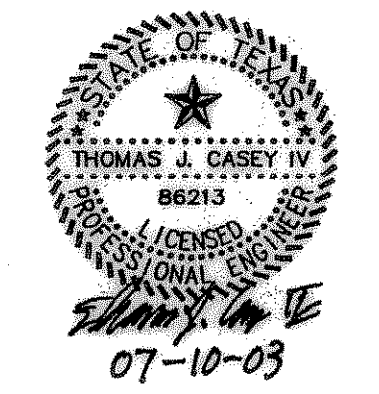


PHONE 972-717-9811 FAX 972-717-2176
105 DECKER COURT - SUITE 800 IRVING, TEXAS 75062

DATE: MAY 8, 2003
DRAWN BY: TJC
CHECKED BY: TJC
COM NO: 144102110
REVISED: MAY 23, 2003

**SPRINGER ELEMENTARY SCHOOL
ROCKWALL INDEPENDENT SCHOOL DISTRICT
ROCKWALL, TEXAS**

FINAL PLANS FOR BIDDING AND CONSTRUCTION



SHEET NUMBER: C
OF: 2.19
SET NUMBER