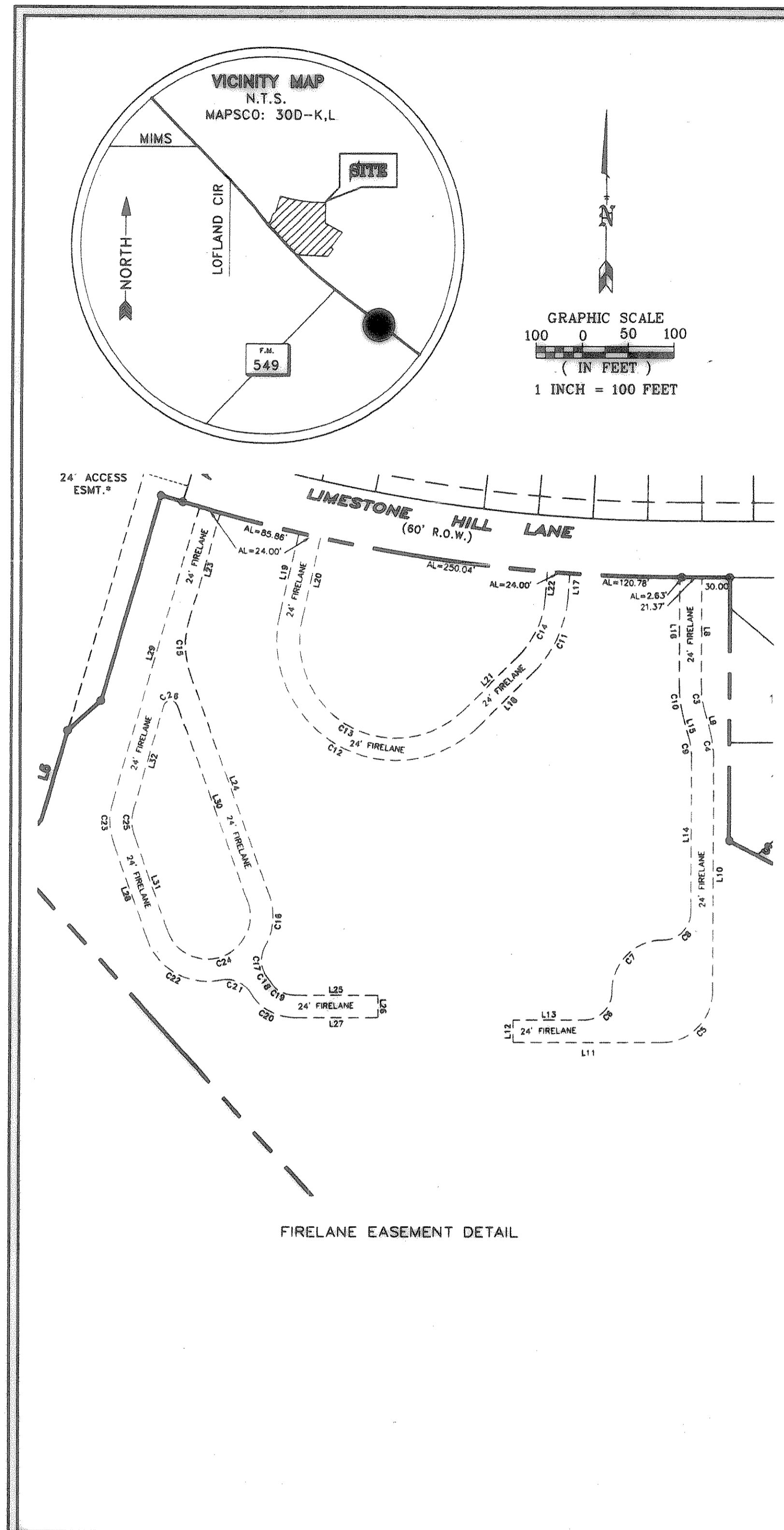


**SPRINGER ELEMENTARY SCHOOL  
 ROCKWALL INDEPENDENT SCHOOL DISTRICT  
 ROCKWALL, TEXAS**

FINAL PLANS FOR BIDDING  
 AND CONSTRUCTION



SHEET NUMBER: C  
 OF 32: 2.4  
 SET NUMBER



NUMBER	DIRECTION	DISTANCE
L1	S73°38'30"E	25.00
L2	N89°57'57"E	51.37
L3	S52°19'55"E	40.00
L4	S37°40'05"W	125.00
L5	N38°30'30"E	54.24
L6	N18°21'30"E	100.20
L7	N47°43'00"E	48.12
L8	S00°02'03"E	116.43
L9	S19°02'03"E	26.26
L10	S00°00'00"E	250.89
L11	S90°00'00"W	152.01
L12	N00°00'00"W	24.00
L13	N90°00'00"E	77.00
L14	N00°00'00"W	165.90
L15	N15°02'03"W	26.26
L16	N00°02'03"W	116.43
L17	S03°59'09"W	26.80
L18	S45°39'15"W	82.55
L19	N12°33'09"E	89.28
L20	S12°33'09"W	89.30
L21	N45°39'15"E	82.55
L22	N03°59'09"E	26.81
L23	S18°21'30"W	117.96
L24	S20°00'00"E	240.85
L25	N80°00'00"E	89.39
L26	S00°26'34"E	24.00
L27	S90°00'00"W	90.18
L28	N20°00'00"W	107.20
L29	N18°21'30"E	329.84
L30	S20°00'00"E	224.23
L31	N20°00'00"W	107.20
L32	N18°21'30"E	114.41
L33	S47°42'35"W	79.06
L34	N34°00'08"W	80.33
L35	S80°23'41"E	21.42
L36	S09°36'19"W	15.00
L37	S80°23'41"E	12.86
L38	N05°00'00"E	38.23
L39	S85°00'00"E	37.93
L40	S20°00'00"E	13.79
L41	S70°00'00"W	15.00
L42	N20°00'00"W	9.06
L43	S55°00'00"E	41.86
L44	S05°00'00"W	47.89
L45	N34°00'08"W	84.81
L46	S90°00'00"E	22.83
L47	N80°00'00"E	177.05
L48	S00°39'15"W	77.02
L49	S21°50'45"E	104.09
L50	S00°00'00"E	192.92
L51	S44°53'41"W	212.42
L52	S90°00'00"W	25.49
L53	S00°00'00"E	10.00
L54	S90°00'00"W	15.00
L55	N00°00'00"W	10.00
L56	S90°00'00"W	213.50
L57	N44°20'45"W	16.90
L58	S47°42'35"W	114.76
L59	N47°42'35"E	114.23
L60	N44°20'45"W	16.82
L61	S70°00'00"W	34.91
L62	S70°00'00"W	10.00
L63	N20°00'00"W	15.00
L64	N70°00'00"E	10.00
L65	N20°00'00"W	200.19
L66	N01°18'09"E	92.33
L67	N12°33'09"E	215.25
L68	S12°33'09"W	153.64
L69	S77°28'51"E	10.00
L70	S12°33'09"W	15.00
L71	N77°28'51"W	10.00
L72	S12°33'09"W	45.14
L73	S01°18'09"W	20.90
L74	S88°41'51"E	105.00
L75	N01°18'09"W	15.00
L76	N88°41'51"W	105.00
L77	S01°18'09"W	52.13
L78	S20°00'00"E	112.06
L79	N70°00'00"E	30.00
L80	S20°00'00"E	15.00
L81	S70°00'00"W	30.00
L82	S20°00'00"E	116.88
L83	S44°20'45"E	37.19
L84	N80°00'00"E	25.76
L85	N00°00'00"W	15.00
L86	N90°00'00"E	15.00
L87	S00°00'00"E	15.00
L88	N90°00'00"E	137.94
L89	N00°00'00"W	15.00
L90	N90°00'00"E	15.00
L91	S00°00'00"E	15.00
L92	N90°00'00"E	47.73
L93	N44°53'41"E	199.99
L94	N00°00'00"W	25.82

L95	S90°00'00"W	10.00
L96	N00°00'00"W	15.00
L97	N90°00'00"E	10.00
L98	N00°00'00"W	140.46
L99	S68°09'15"W	9.05
L100	N21°50'45"W	15.00
L101	N89°09'15"E	10.00
L102	N21°50'45"W	91.54
L103	N00°39'15"E	8.40
L104	N89°20'45"W	101.00
L105	N00°39'15"E	15.00
L106	S89°20'45"E	101.00
L107	N00°39'15"E	56.58

CURVE	DELTA	RADIUS	LENGTH	CHORD	CD
C1	18°48'14"	1875.95	549.31	547.34	S81°37'56"E
C2	00°13'50"	11509.16	2316	46.32	S07°32'03"E
C3	15°00'00"	100.00	26.18	26.11	S07°32'03"E
C4	15°02'05"	100.00	26.24	26.16	N07°31'02"W
C5	90°01'23"	55.00	86.42	77.80	S45°00'42"W
C6	90°40'27"	30.00	47.48	42.88	N44°38'47"E
C7	91°20'53"	55.00	87.69	78.69	N45°00'00"E
C8	90°40'27"	30.00	47.48	42.88	N45°20'13"E
C9	15°02'05"	76.00	19.94	19.88	N07°31'02"W
C10	15°00'00"	124.00	32.46	32.37	N07°32'03"W
C11	41°40'06"	124.00	90.16	88.20	S24°49'12"W
C12	148°53'54"	129.00	330.74	247.31	N80°53'48"W
C13	148°53'54"	105.00	269.21	201.30	S80°53'48"E
C14	41°40'06"	100.00	72.73	71.13	N24°49'12"E
C15	36°21'30"	100.00	63.46	62.40	S01°49'15"E
C16	48°00'39"	70.00	58.66	56.96	S04°00'20"W
C17	65°09'55"	30.00	34.12	32.31	S04°34'18"E
C18	8°08'51"	34.00	5.76	5.76	S34°05'51"E
C19	58°57'34"	30.00	30.87	29.53	S80°31'13"E
C20	58°57'34"	54.00	55.57	53.15	N80°31'13"W
C21	71°16'46"	30.00	37.32	34.96	N86°40'49"W
C22	82°19'12"	70.00	100.57	92.14	N81°09'36"W
C23	36°21'30"	74.00	46.96	46.17	N01°49'15"W
C24	180°00'00"	46.00	144.51	92.00	S70°00'00"W
C25	36°21'30"	50.00	31.73	31.20	N01°49'15"W
C26	143°38'30"	8.00	20.06	15.20	N88°10'45"E
C27	10°43'44"	157.50	28.49	28.45	S89°38'18"E
C28	21°59'09"	157.50	60.44	60.07	S05°59'35"E
C29	39°00'08"	142.50	97.00	95.14	S14°30'04"E

FINAL PLAT  
**HICKORY RIDGE PHASE FIVE**  
 BEING 12.359 ACRE TRACT OUT OF  
 HICKORY RIDGE PHASE FOUR  
 AND OUT OF THE  
 A. JOHNSON SURVEY, ABSTRACT NO. 125  
 AND OUT OF THE  
 J.R. JOHNSON SURVEY, ABSTRACT NO. 128  
 ROCKWALL COUNTY, TEXAS  
 STREET ADDRESS: STATE HIGHWAY NO. 205

APRIL 15, 2003  
 SURVEYOR:  
 ANALYTICAL SURVEYS, INC.  
 707 EASY STREET, GARLAND TEXAS 75042  
 (972) 272-6287 FAX (972) 272-8407

OWNER:  
 ROCKWALL INDEPENDENT SCHOOL DISTRICT  
 STATE HIGHWAY NO. 205  
 ROCKWALL, TEXAS, 75087  
 TELEPHONE NO. (972)  
 FAX NO. (972)

DATE: 04-15-03  
 JOB NO. R-430  
 DRAWN BY: TAM

**FOR INFORMATION ONLY**