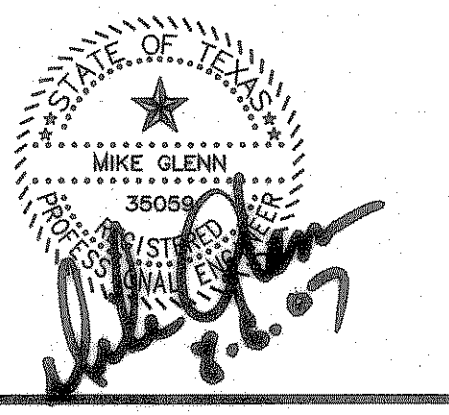


Consultants:  
 CIVIL:  
 GLENN ENGINEERING CORP  
 STRUCTURAL:  
 SHW GROUP, LLP  
 MEP:  
 ESTES MCLURE AND ASSOCIATES.  
 FOOD SERVICE:  
 H. G. RICE Inc.  
 LANDSCAPING:  
 GRUBBS RAMSEY

**FINAL PLANS  
 FOR BIDDING AND CONSTRUCTION**



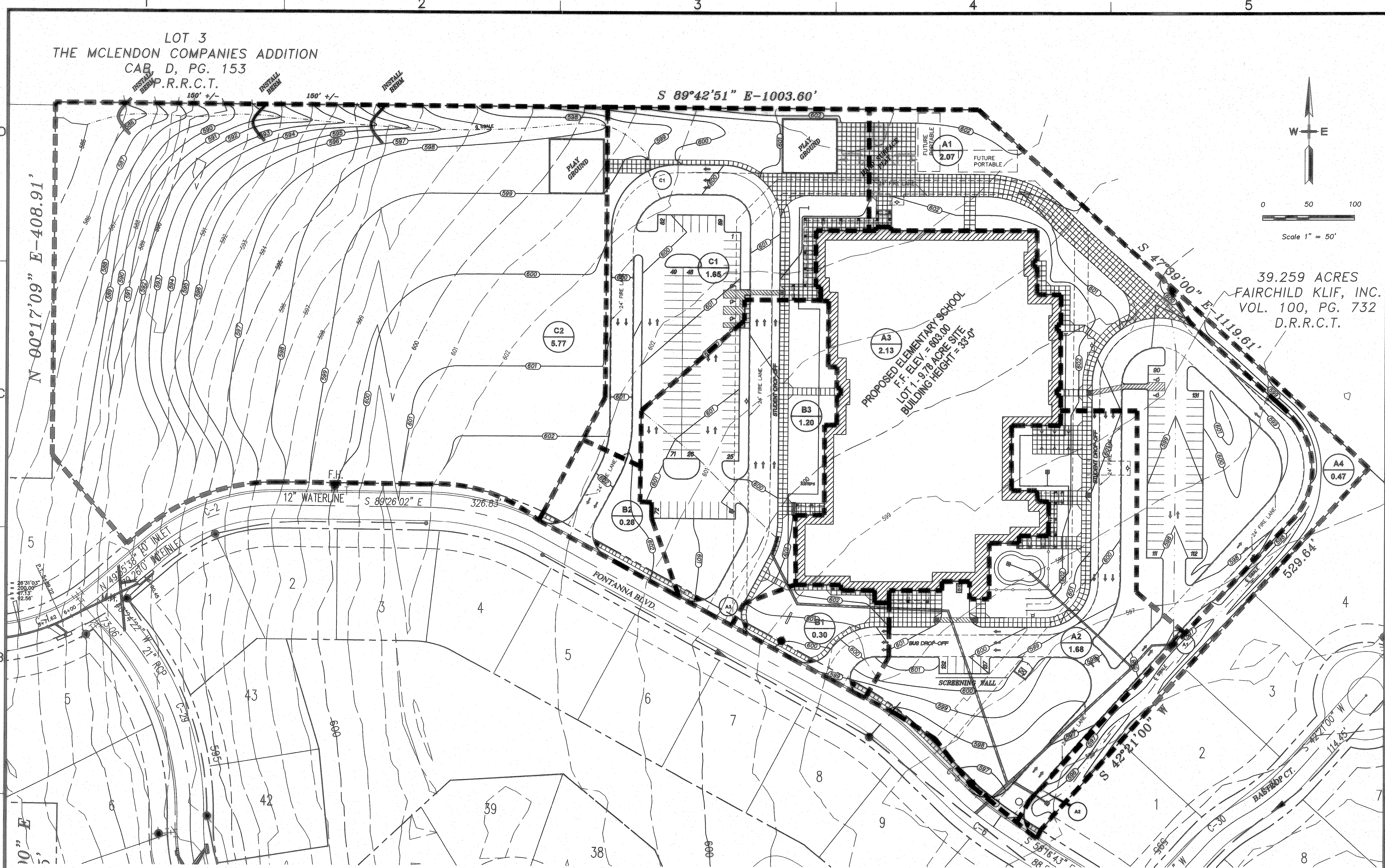
**Rockwall Independent  
 School District**

**ROCKWALL  
 ELEMENTARY  
 SCHOOL #12  
 ROCKWALL, TEXAS**

Project Number: 1441.05.020  
 Drawing Date: 7/18/2006  
 Drawn by: R.HOWMAN  
 Checked by: RAH  
 Scale: AS SHOWN  
 ACAD File: FONTANNA-ENG-6\_CITYcomments.d  
 © 2006 SHW Group, LLP

Revisions:  
 1 06/01/2006 CITY COMMENTS  
 2 08/15/2006 CITY COMMENTS  
 3 10/23/2006 WATER REVISIONS

Sheet Title:  
**DRAINAGE  
 AREA  
 MAP**



INLET DESIGN CALCULATIONS		PROJECT NAME		ELEMENTARY SCHOOL, ROCKWALL #12,		BY		RAH								
LINE NAME		N/A		DATE		04/19/06										
No.	Inlet Location	AREA RUNOFF						SELECTED INLET								
		Design Storm Frequency (yrs.)	Time of Conc. (min.)	Intensity I (in./hr.)	Runoff Coeff. "C"	Area (ac.)	"Q" (c.f.s.)	Carry-Over From Upstream Inlet (c.f.s.)	Total Gutter Flow (c.f.s.)	Gutter Capacity (c.f.s.)	Gutter Slope (ft./100ft.)	Crown Type	Length "L" (Feet)	Inlet Capacity (c.f.s.)	Type	Carry-Over To Downstream Inlet (c.f.s.)
A1	STA. 2+80 LINE "A"	100	10	9.8	0.70	2.07	14.20	0	N/A	LOW	POINT	N/A	20'	20.0	C.I.	0
A2	STA. 0+14 LINE "A-1"	100	10	9.8	0.70	1.68	11.52	0	N/A	LOW	POINT	N/A	20'	20.0	C.I.	0
B3	STA. 4+33 LINE "B"	100	10	9.8	0.70	1.20	8.23	0	N/A	LOW	POINT	N/A	15'	20.0	C.I.	0
C1	SIDEWALK FLUME	100	10	9.8	0.70	1.65	11.32	0	N/A	LOW	POINT	N/A	4'	15.0	S.F.	0

AREA NO.	DRAINAGE AREA "A" (ACRES)	TIME OF CONCENTRATION (IN MINUTES)	RUNOFF COEFFICIENT "C"	INTENSITY "I" (IN./HR.)	DESIGN FLOW "Q" (C.F.S.)	REMARKS
A1	2.07	10	0.70	9.8	14.20	20' CURB INLET - STA. 2+80 - LINE "A"
A2	1.68	10	0.70	9.8	11.52	20' CURB INLET - STA. 0+14 - LINE "A"
A3	2.13	10	0.70	9.8	14.61	ROOF DRAIN SYSTEM - LINE "A"
A4	0.47	10	0.70	9.8	3.22	2'x2' AREA DRAIN
B1	0.30	10	0.70	9.8	2.06	TO FONTANNA BLVD.
B2	0.28	10	0.70	9.8	1.92	TO FONTANNA BLVD.
B3	1.20	10	0.70	9.8	8.23	15' CURB INLET - STA. 4+33 LINE "B"
C1	1.65	10	0.35	9.8	11.32	SIDEWALK FLUME TO PARK
C2	5.77	10	0.70	9.8	39.58	PARK AREA

**RECORD DRAWING**  
 This is to certify that changes and corrections have been made to conform to the contractor's record of this project.  
 Signed: *J. Glenn* 8/2/07  
 Date: 8/2/07  
 Glenn Engineering Corporation

**DRAINAGE AREA MAP**  
 SCALE: 1" = 50'

**GLENN ENGINEERING**  
 PHONE 972-77-5611 FAX 972-77-5176  
 105 DECKER COURT - SUITE 910 IRVING, TEXAS 75062

**CG 1.05**

User: Cherylin Armijo  
 Aug 06, 2007 3:17pm  
 C:\Robert\p\c-DRIVE\ROCKWALL\BID SET\FONTANNA-ENG-6\_CITYcomments.dwg